



F.C.C. STARKE CENTER
SANTA FE COMMUNITY COLLEGE
ENDOWMENT CORPORATION
CRAB SALLEY & ASSOCIATES INC. AIA
MCCOY, HANCOCK, JONES & BROWN
BEST CONSTRUCTION CO. INC. AIA

BRADFORD COUNTY

CALL

1. Bradford County Courthouse, contributing.
2. 209 West Call Street, Starke (Bradford County), Florida.
3. Paul L. Weaver.
4. 1985.
5. Bradford County Board of Historical Trustees.
6. South, main facade.
7. Photo no. 1 of 43.

BRADFORD COUNTY BANK

WILLIAMS
JEWELRY

WILLIAMS
JEWELRY

WILLIAMS
JEWELRY

KENDALL TELEPHONE
SALES & SERVICE, INC.

CLOSED



1. Bradford County Bank Building, contributing.
2. 100 East Call Street, Starke (Bradford County), Florida.
3. Paul L. Weaver.
4. 1985.
5. Bradford County Board of Historical Trustees.
6. North, main facade.
7. Photo no. 2 of 43.



NO PARKING
ANY TIME

1. Von Kirn Residence - Magnolia Hotel, contributing.
2. 137 North Walnut Street, Starke (Bradford County), Florida.
3. Paul L. Weaver.
4. 1985.
5. Bradford County Board of Historical Trustees.
6. East and north facades.
7. Photo no. 3 of 43.



TERWILLEGAR MOTORS

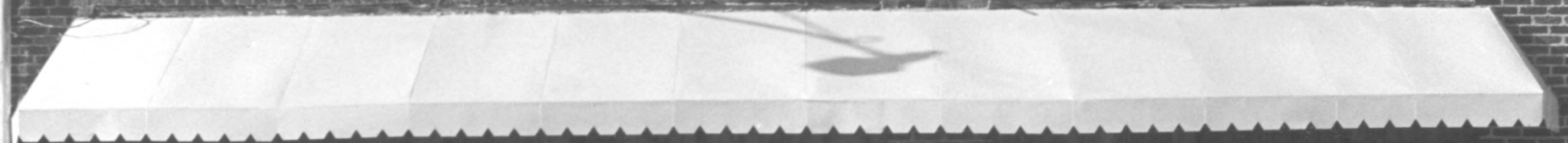
OLLAR

82

1. Terwillegar Motors, contributing.
2. 210 West Call Street, Starke (Bradford County), Florida.
3. Paul L. Weaver.
4. 1985.
5. Bradford County Board of Historical Trustees.
6. East and north facades.
7. Photo no. 4 of 43.

The **OFFICE SHOP**

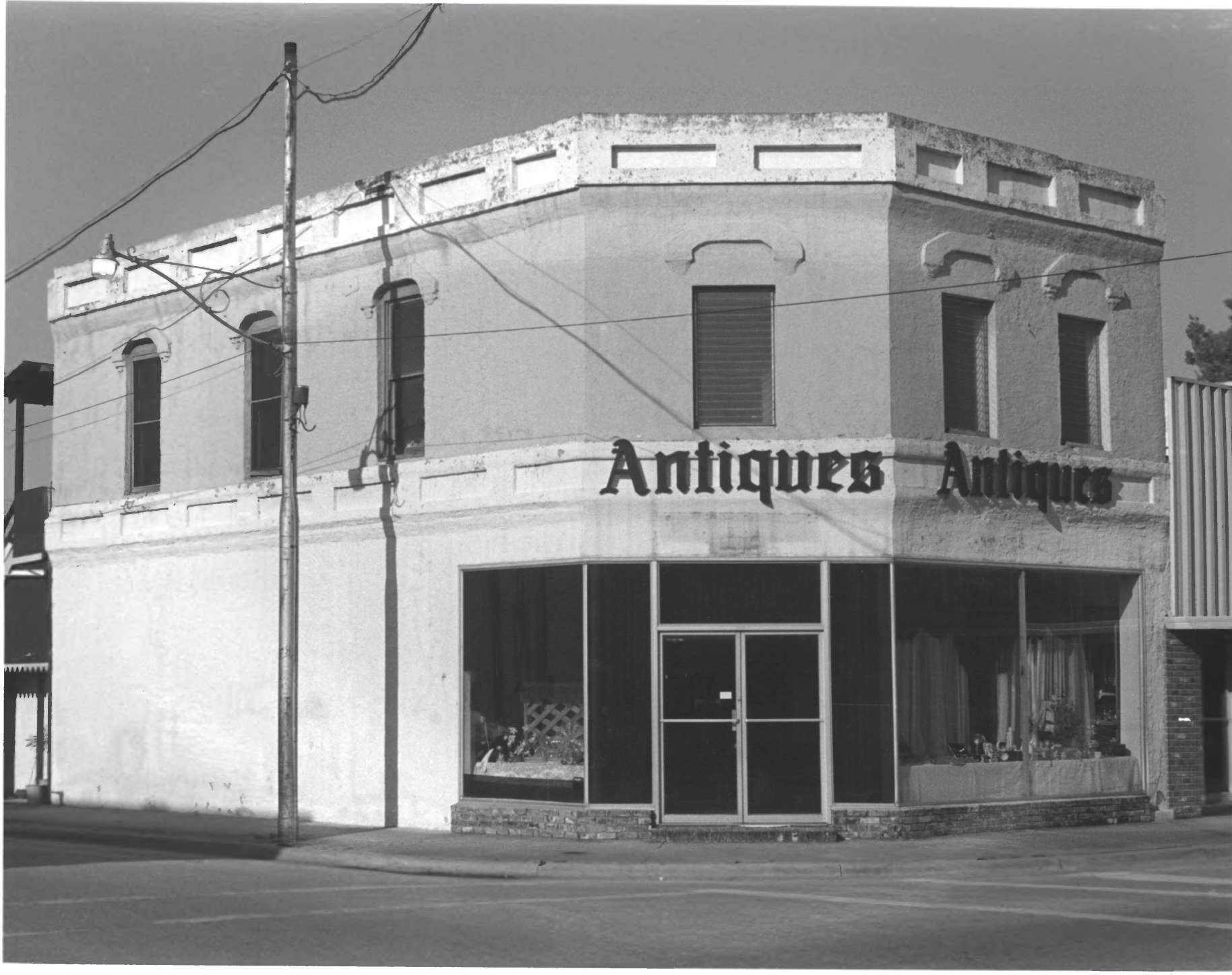
**BRADFORD
PRINTERS**



1. Gaskins Brick Block, contributing.
2. 110 West Call Street, Starke (Bradford County), Florida.
3. Paul L. Weaver.
4. 1985.
5. Bradford County Board of Historical Trustees.
6. North facade.
7. Photo no. 5 of 43.

Antiques

Antiques



1. Gaskins Brick Block, contributing.
2. 100 West Call Street, Starke (Bradford County), Florida.
3. Paul L. Weaver.
4. 1985.
5. Bradford County Board of Historical Trustees.
6. North and east facades.
7. Photo no. 6 of 43.



MONTGOMERY
WARD

City
BARBER SHOP

OPEN

1. 120-126 East Call Street, contributing.
2. 120-126 East Call Street, Starke (Bradford County), Florida.
3. Paul L. Weaver.
4. 1985.
5. Bradford County Board of Historical Trustees.
6. North facade.
7. Photo no. 7 of 43.

BAKERY

MONTGOMERY
WARD

NO
LEFT
TURN
ANYTIME



1. Original Mitchell's Drug Store, contributing.
2. 134-138 East Call Street, Starke (Bradford County), Florida.
3. Paul L. Weaver.
4. 1985.
5. Bradford County Board of Historical Trustees.
6. North and west facades.
7. Photo no. 8 of 43.



1. Richard & Pace General Store, contributing.
2. 212 East Call Street, Starke (Bradford County), Florida.
3. Paul L. Weaver.
4. 1985.
5. Bradford County Board of Historical Trustees.
6. North and east facades.
7. Photo no. 9 of 43.



Sunshine
ELECTRICAL & PLUMBING
SUPPLY CO., INC.
214 482-1111

1. Kruse Grocery Store.
2. 304-310 East Call Street, Starke (Bradford County), Florida.
3. Paul L. Weaver.
4. 1985.
5. Bradford County Board of Historical Trustees.
6. North facade.
7. Photo no. 10 of 43.



1. Old Post Office Building, contributing.
2. 127 East Call Street, Starke (Bradford County), Florida.
3. Paul L. Weaver.
4. 1985.
5. Bradford County Board of Historical Trustees.
6. South, main facade.
7. Photo no. 11 of 43.



1. Stump's Department Store Building - Armory, contributing.
2. 139 East Call Street, Starke (Bradford County), Florida.
3. Paul L. Weaver.
4. 1985.
5. Bradford County Board of Historical Trustees.
6. South, main facade.
7. Photo no. 12 of 43.



1888

M.G. McMILLAN
LAND SURVEYS
200

HUNSON E
CALL ST

1. Original Bradford County Bank Building, contributing.
2. 200 East Call Street, Starke (Bradford County), Florida.
3. Paul L. Weaver.
4. 1985.
5. Bradford County Board of Historical Trustees.
6. North and west facades.
7. Photo no. 13 of 43.



1. Jones-Rosenberg Building, contributing.
2. 207 East Call Street, Starke (Bradford County), Florida.
3. Paul L. Weaver.
4. 1985.
5. Bradford County Board of Historical Trustees.
6. South and west facades.
7. Photo no. 14 of 43.



1. 213-215 East Call Street, contributing.
2. 213-215 East Call Street, Starke (Bradford County), Florida.
3. Paul L. Weaver.
4. 1985.
5. Bradford County Board of Historical Trustees.
6. South facade.
7. Photo no. 15 of 43.

A

C

M

E

HARDWARE

PLUMBING & PIPE

PAINT



SEWING MACHINES
and
CLEANERS
PAIRS

OPEN

NEW DRS
7:30 - 6:00
LEAF RAKES \$1.99

ELECTRICAL

SCISSORS
SHARPENED



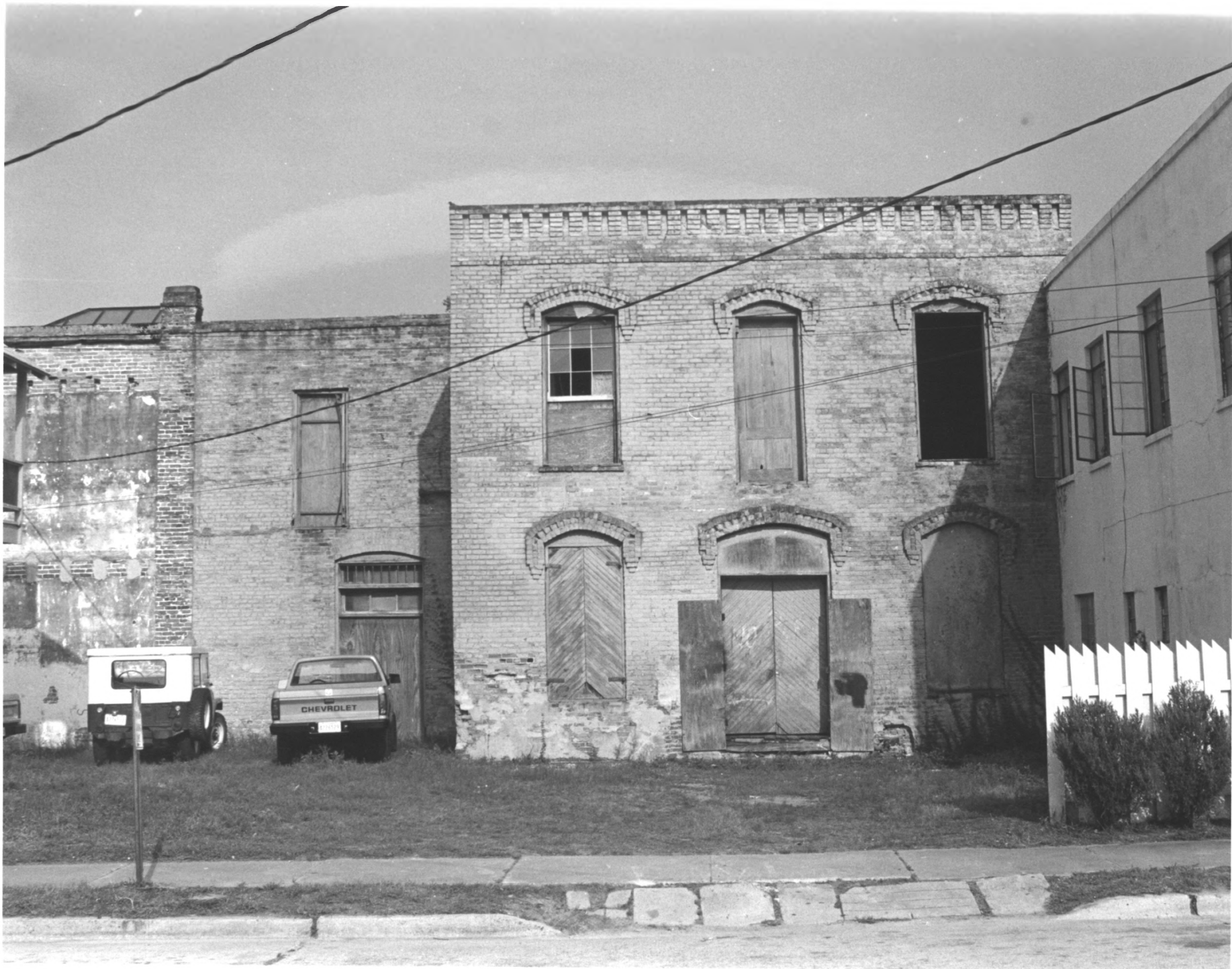
1. Acme Hardware, contributing.
2. 301 East Call Street, Starke (Bradford County), Florida.
3. Paul L. Weaver.
4. 1985.
5. Bradford County Board of Historical Trustees.
6. North facade.
7. Photo no. 16 of 43.



1. Hoover Brothers Building, contributing.
2. 311 East Call Street, Starke (Bradford County), Florida.
3. Paul L. Weaver.
4. 1985.
5. Bradford County Board of Historical Trustees.
6. South and east facades.
7. Photo no. 17 of 43.



1. Richard & Pace General Store, Warehouse, contributing.
2. 212 East Call Street, Starke (Bradford County), Florida.
3. Paul L. Weaver.
4. 1985.
5. Bradford County Board of Historical Trustees.
6. East facade.
7. Photo no. 18 of 43.



1. Richard & Pace Warehouse (original portion), contributing.
2. 212 East Call Street, Starke (Bradford County), Florida.
3. Paul L. Weaver.
4. 1985.
5. Bradford County Board of Historical Trustees.
6. West facade.
7. Photo no. 19 of 43.