

The National Register Legal Federal Signature and Date of Listing for the Waialua Fire Station can be found in the Cover documentation for the Fire Stations of Oahu in Honolulu, HAWAII.

UNITED STATES DEPARTMENT OF THE INTERIOR
NATIONAL PARK SERVICE

**NATIONAL REGISTER OF HISTORIC PLACES
INVENTORY -- NOMINATION FORM**

FOR NPS USE ONLY
RECEIVED
DATE ENTERED

SEP 10 1980
DEC 2

CONTINUATION SHEET

ITEM NUMBER 7

PAGE 5

doors which slide to the side. Also, a ladder truck station built in 1930, is located to the right of the station and is connected to the station by a single-story stucco wall with a round arched entry and tile roof.

Located at 620 South Street, the Kakaako Station encompasses a portion of the property described in 1979 by the Tax Map Key: 2-1-31:18, which is approximately 6/7 of an acre, and delineated by the dark line on the enclosed Kakaako plat map.

UTM: Z4 E618040 N2356425

6. The Waialua Fire Station was designed by A. W. Heen in 1932. It differs from the other stations as it has a more horizontal thrust in its massing. The right half of the building is devoted to housing the fire engines and is distinguished by a shingled, double pitched, lateral running gable roof with overhanging eaves and exposed rafters, and a pair of doorways for the engines. The doorways were originally elliptical arched, but have been modified in a manner similar to the Makiki Station with overhead sliding doors.

The left side of the building has office space on the first floor and sleeping quarters on the second. Its stucco facade is three bays wide and is capped by a front facing gable with a round louver. The roof is double pitched, with overhanging eaves. Each bay has one rectangular window on the first and second stories, except for the bay closest to the fire engine section which has an outset entry on the first floor. All windows are jalousie. A flat roofed tower with round arched louvers on each side is to the rear of this section to the right of center. The interior of this station remains in good condition and features an open truss ceiling in the engine section and a brass pole and iron balcony in the center of the intersection between the dormitory and engine sections.

Although built in 1932, this building is included in the nomination as it is the last station to perpetuate the Spanish Mission style of the earlier stations and is the only surviving rural fire station of the pre-World War II period. As such, the building is an integral part of this thematic nomination.

UNITED STATES DEPARTMENT OF THE INTERIOR
NATIONAL PARK SERVICE

**NATIONAL REGISTER OF HISTORIC PLACES
INVENTORY -- NOMINATION FORM**

FOR NPS USE ONLY

RECEIVED

DATE ENTERED

CONTINUATION SHEET

ITEM NUMBER 7 PAGE 6

Located at 66-420 Haleiwa Road, the Waialua Station encompasses the front half of the property described in 1979 by the Tax Map Key: 6-6-13:3, which is approximately 1/6 of an acre, and delineated by the dark line on the enclosed Waialua plat map.

UTM: Z4 E591660 N2387710

7. Central Fire Station is a two-story reinforced concrete building which is rendered in the moderne style. Designed by Dickey and Young, this station was built in 1934, replacing the earlier Romanesque Revival blue stone station of 1897. Since the construction of the 1897 building, the Central Fire Station has served as the headquarters for the Honolulu Fire Department.

The building is five bays wide and dominated by the three middle bays with their one-and-one-half story Art Deco aluminum doorways which were constructed by the California Artistic Metal and Wire Company of San Francisco. Above the modestly designed doors are aluminum panels with linear designs with an octagon in the middle containing the letter HFD. Above each panel is a set of four windows. The end bays each contain a first story window and a set of three second story windows. All second story windows are jalousies, and the first floor windows are tinted plate glass. A decorative belt course bands the top of this flat roofed building. This banding employs the octagonal HFD motif of the door panels. An abbreviated tower of approximately thirty feet rises from the roof at the rear of the right bay. This tower has a pair of long rectangular louvers running its height, a decorative belt course repeating that of the building, and an inset top with three rectangular louvers on each side and a copper double pitched hipped roof. In 1949, a one-story hollow tile addition was erected at the rear to provide additional office space. The Ewa (northwest) side of the building features a balcony with geometric deco decoration. Behind the balcony is a set of three window with rectangular pillars between them.

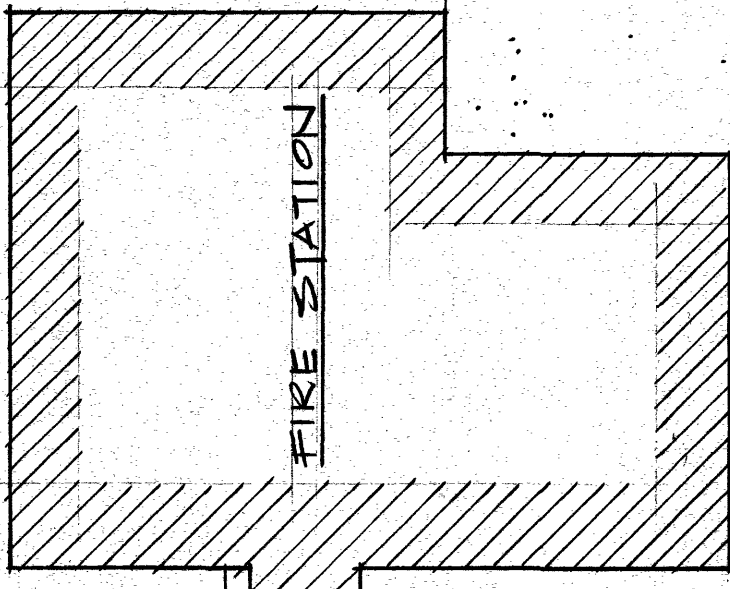
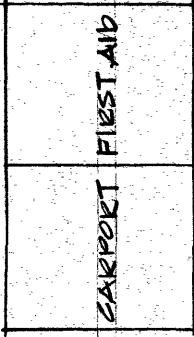
Although not fifty years old, this building is included in this thematic group as the station has strong associations with the history of the fire department, having been erected and serving as the fire department's headquarters. Designed by architect, C. W. Dickey, and engineer,

200° 54' → 150.0'

200° 54' → 100.0'

110° 54' ← 150.0'

203° 54' → 100.0'



CONC. DRIVEWAY →

PLOT PLAN

SC. 1/2" = 1'-0"

T.M.K. 6-6-13:3

WAIALUA FIRE STATION

