



"Mount Helena"

Edward M. Reining - Photographer

PAC 74-104.96 N

NEGS: MONTANA HISTORICAL SOCIETY

MOUNT HELENA HISTORIC DISTRICT

HELENA

LEWIS & CLARK CO

MONTANA



"Indian camp, about 1874, Mt Helena in the distance."

MOUNT HELENA HISTORIC DISTRICT
CITY OF HELENA
LEWIS & CLARK COUNTY
MONTANA

Helena file
"Mt Helena"

NEGS: MONTANA
HISTORICAL
SOCIETY



'View from slope of Mt. Helena.' [no date]

Howard Cox, Helena, MT. Photographer

MOUNT HELENA HISTORIC DISTRICT

CITY OF HELENA

LEWIS & CLARK CO

MONTANA

Negs. Helena file

"Mt Helena"

Montana Historical

Society



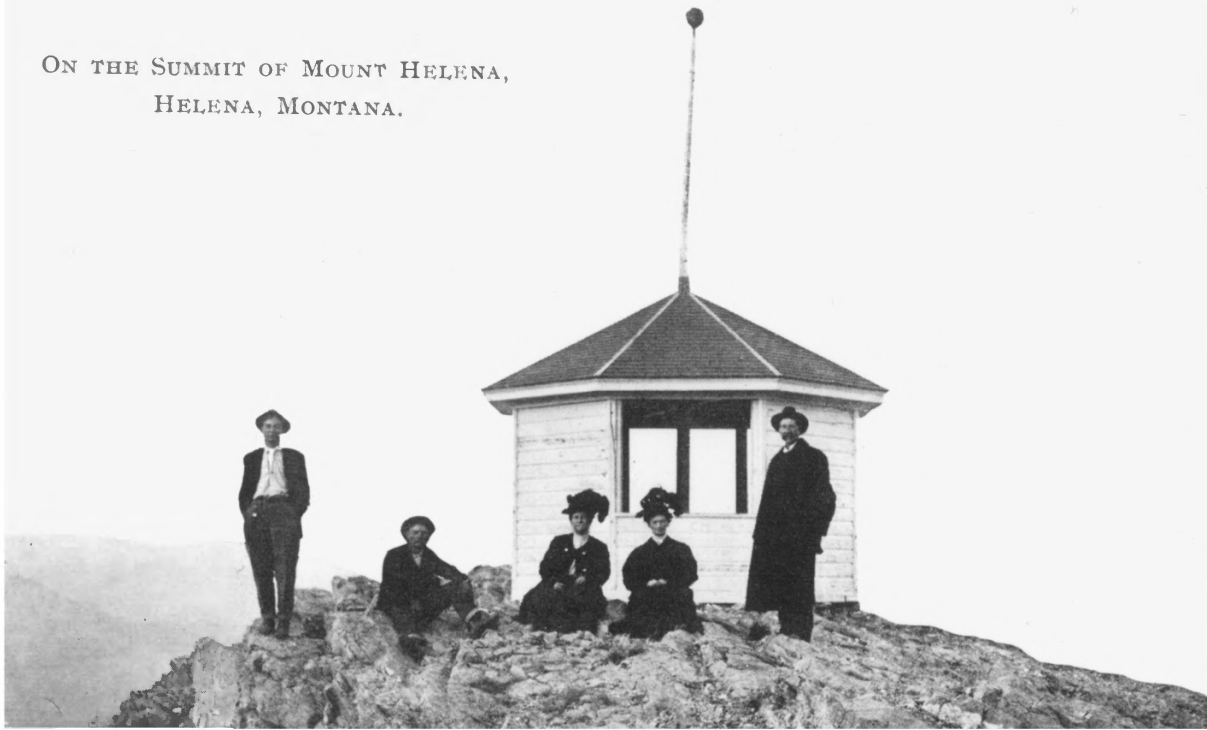
Russell Aubrey Shaw & children, 1913, Faith & Lillian,
top of Mt Helena.

negs: Helena file
"Mt Helena"

Montana Historical
Society

MOUNT HELENA HISTORIC DISTRICT
CITY OF HELENA
LEWIS & CLARK CO
MONTANA

ON THE SUMMIT OF MOUNT HELENA,
HELENA, MONTANA.



"Billy Hartwig, Mr Jewett, Mrs Jewett."
[unclear]

MOUNT HELENA HISTORIC DISTRICT
CITY OF HELENA
LEWIS & CLARK COUNTY
MONTANA

NEGS: Helena file
"Mt Helena"
Montana Historical
Society



MOONT HELENA HISTORIC DIST.

HELENA MONTANA

LEWIS &
CLARK CO.

ELLEN SIEVERT

OCT. 1995

NEG S.H.P.D.

DEVIL'S KITCHEN CAVE :

1906 TRAIL SITE # 1



MOUNT HELENA HISTORIC DISTRICT

HELENA MONTANA LEWIS & CLARK CO

MARY GREENE

9/27/95

NEG. S.H.P.O.

FROM NORTH



MOUNT HELENA HISTORIC DISTRICT

HELENA MONTANA LEWIS & CLARK CO

9/27/95

NEZ. SHPO

FROM SOUTHWEST



MOUNT HELENA HISTORIC DISTRICT

HELENA MONTANA LEWIS & CLARK CO

MARY GREENE

9/27/95

NEG. - S.H.P.O.

EAST TO CITY



MOUNT HELENA HISTORIC DISTRICT

HELENA MONTANA LEWIS & CLARK CO

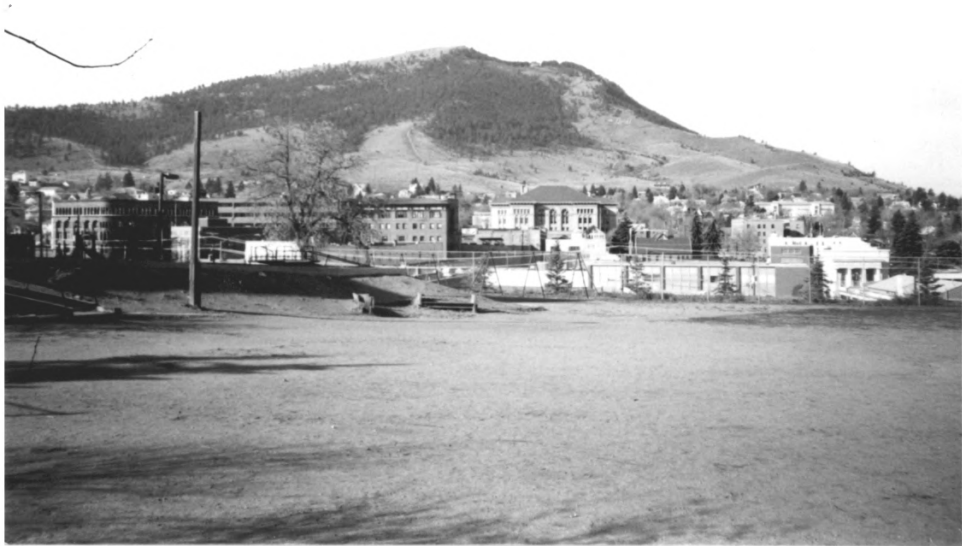
MARY GREENE

9/27/95

NEG. - S.H.P.O.

SITE NO. 27

FROM SOUTH



MOUNT HELENA HISTORIC DISTRICT

HELENA MONTANA LEWIS & CLARK CO

MARY GREENE

9/27/95

NEG. SH.P.O.

FROM EAST