



Springfield Downtown Historic District
Amendment

Springfield, Vermont

Credit: Gina Campoli

Date: April 1986

Negative filed at the Vermont

Division for Historic Preservation

Description: The Brookline Apartment
House (#59), view looking southeast.

Photograph 1

JUL 30 1986

86-A-52



86-7-52

Springfield Downtown Historic District
Amendment

Springfield, Vermont

Credit: Gina Campoli

Date: April 1986

Negative filed at the Vermont

Division for Historic Preservation

Description: The Brookline Apartment
House (#59), view looking northeast.

Photograph 2

JUL 30 1986



86-752

Springfield Downtown Historic District
Amendment

Springfield, Vermont

Credit: Gina Campoli

Date: April 1986

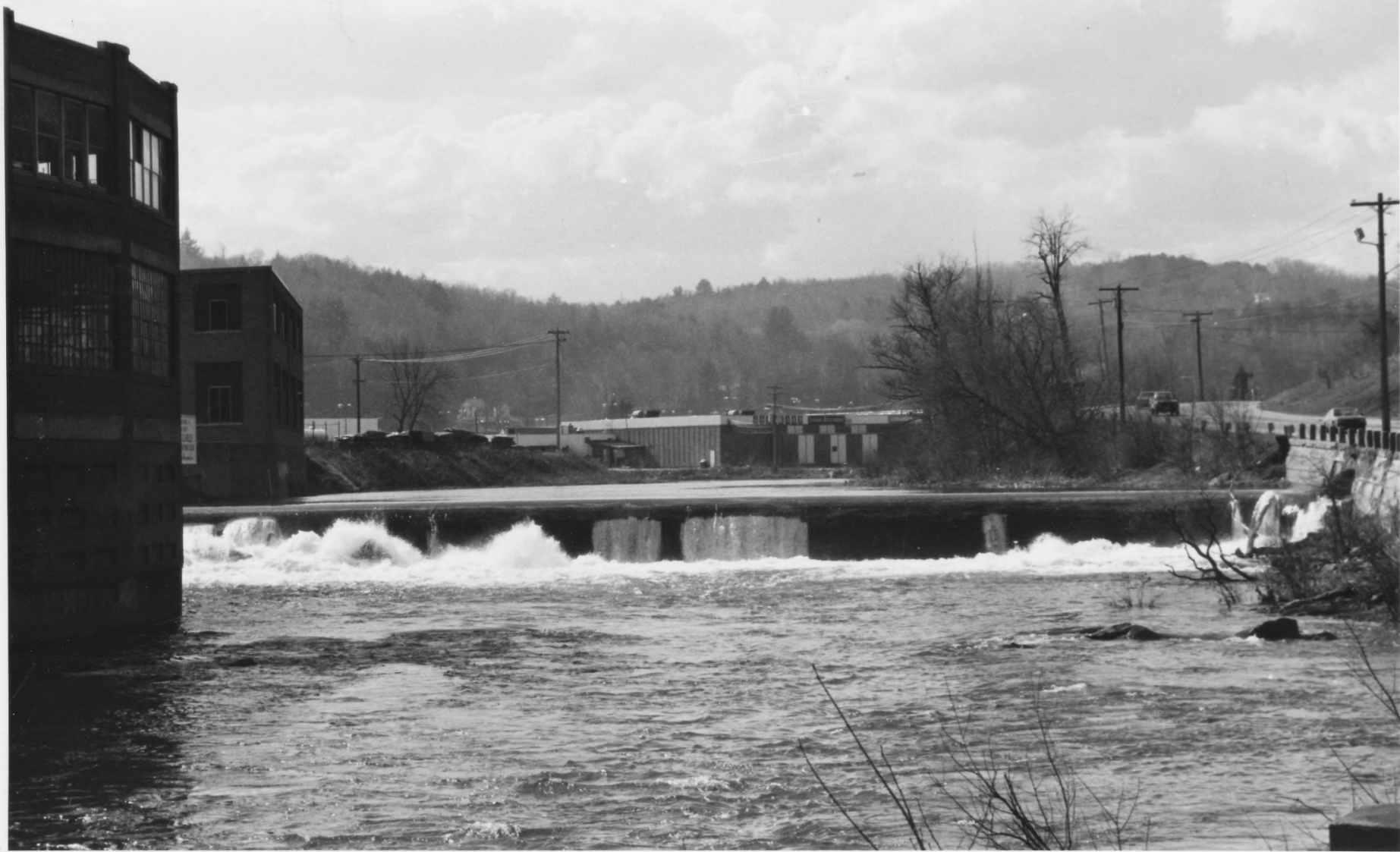
Negative filed at the Vermont

Division for Historic Preservation

Description: The Brookline Apartment
House (#59), view looking northwest.

Photograph 3

JUL 30 1986



86A-52

Springfield Downtown Historic District
Amendment
Springfield, Vermont
Credit: Gina Campoli
Date: April 1986
Negative filed at the Vermont
Division for Historic Preservation
Description: The Fellows Dam (#60),
looking north.

Photograph 4



Springfield Downtown Historic District
Amendment

Springfield, Vermont

Credit: Gina Campoli

Date: April 1986

Negative filed at the Vermont

Division for Historic Preservation

Description: The Gilman Dam (#61) in
background, view looking north.

Photograph 5

JUL 30 1986

86A-52



86-A-52

Springfield Downtown Historic District
Amendment

Springfield, Vermont

Credit: Gina Campoli

Date: April 1986

Negative filed at the Vermont

Division for Historic Preservation

Description: The Comtu Falls Dam (#62)
in foreground, view looking north.

Photograph 6

JUL 30 1986

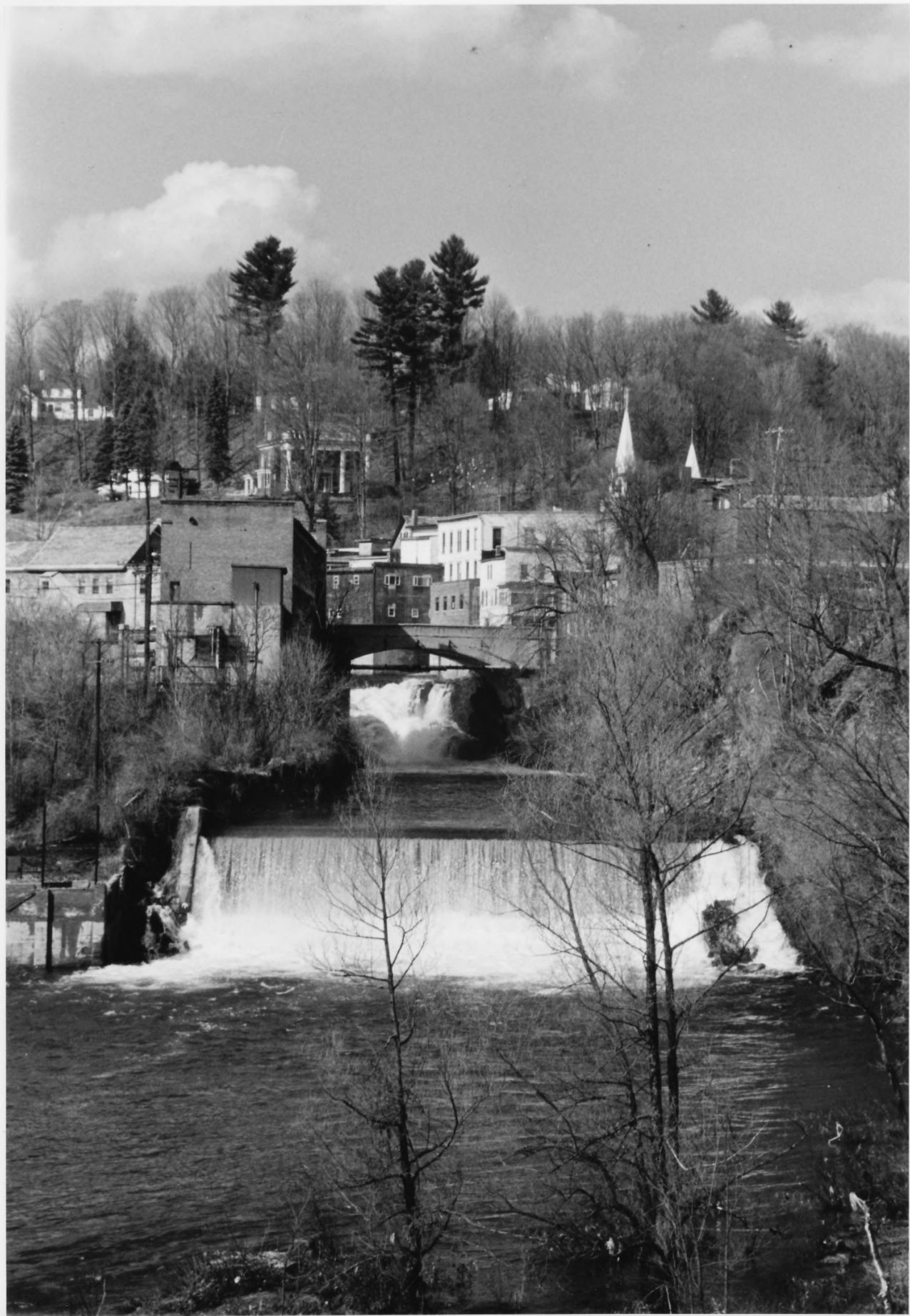


86-A-52

Springfield Downtown Historic District
Amendment
Springfield, Vermont
Credit: Gina Campoli
Date: April 1986
Negative filed at the Vermont
Division for Historic Preservation
Description: Park Street Bridge (#63),
view looking northeast.

Photograph 7

JUL 30 1986



86-7-57

Springfield Downtown Historic District
Amendment

Springfield, Vermont

Credit: Gina Campoli

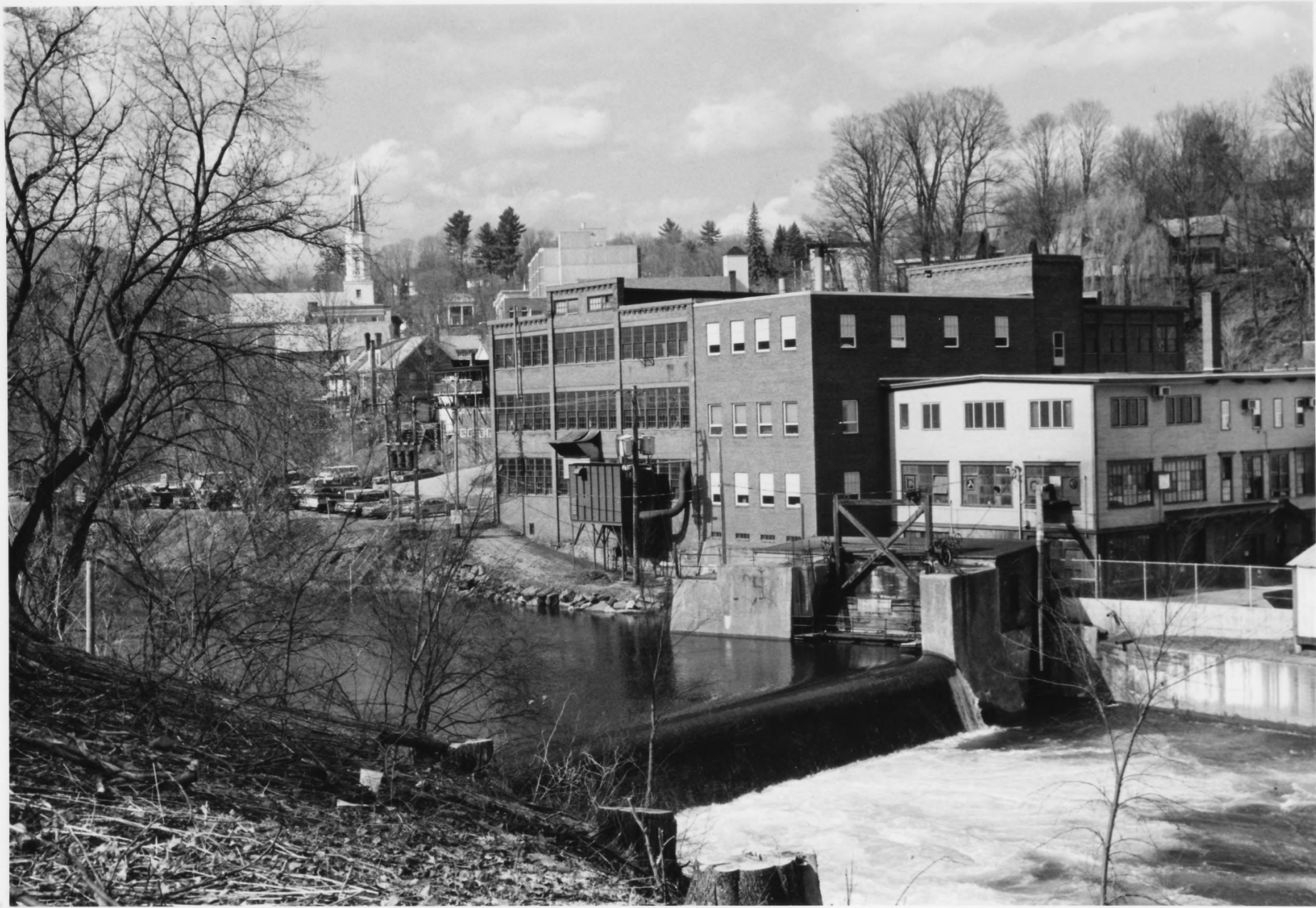
Date: April 1986

Negative filed at the Vermont

Division for Historic Preservation

Description: Park Street Bridge (#63)
in background, Slack Dam (#64) in
foreground, view looking north.

Photograph 8



Springfield Downtown Historic District
Amendment

Springfield, Vermont

Credit: Gina Campoli

Date: April 1986

Negative filed at the Vermont

Division for Historic Preservation

Description: Lovejoy Dam (#65), view
looking northeast.

Photograph 9

JUL 30 1986

86-A52