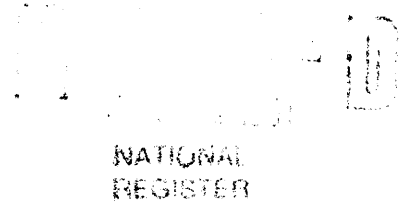


United States Department of the Interior National Park Service

National Register of Historic Places Registration Form



This form is for use in nominating or requesting determinations of eligibility for individual properties or districts. See instructions in Guidelines for Completing National Register Forms (National Register Bulletin 16).

1. Name of Property

historic name Timmerman-Burd Building other names/site number

2. Location

street & number 118 S. Main city, town Mount Pleasant state Iowa code IA county Henry code 087 zip code 52641

3. Classification

Table with 3 columns: Ownership of Property, Category of Property, and Number of Resources within Property. Includes checkboxes for private/public ownership and building/site/structure/object categories.

Name of related multiple property listing: Architectural & Historical Resources of Mount Pleasant, IA Number of contributing resources previously listed in the National Register 0

4. State/Federal Agency Certification

As the designated authority under the National Historic Preservation Act of 1966, as amended, I hereby certify that this nomination request for determination of eligibility meets the documentation standards for registering properties in the National Register of Historic Places and meets the procedural and professional requirements set forth in 36 CFR Part 60.

In my opinion, the property meets does not meet the National Register criteria. See continuation sheet.

5. National Park Service Certification

I, hereby, certify that this property is: entered in the National Register. determined eligible for the National Register. determined not eligible for the National Register.

Entered in the National Register stamp, Signature of the Keeper, Date of Action

6. Function or Use

Historic Functions (enter categories from instructions)

COMMERCE/specialty

Current Functions (enter categories from instructions)

COMMERCE/specialty

7. Description

Architectural Classification

(enter categories from instructions)

Late Victorian

Italianate

Materials (enter categories from instructions)

foundation Limestone

walls Brick

roof Asphalt

other Metal cornice

Describe present and historic physical appearance.

This two story brick building (1883), measuring approximately 20'x70' (with a rear addition of 20'x80'), is located on the east side of the Square, near the middle of the block. The narrow end of the rectangular building faces the Square, and the flat roof slopes to the rear. The facade features four tall slender segmental arched windows on the second floor. These are topped by brick patterned hoodmolds with keystones. A bracketed metal cornice caps the building. The street level is not symmetrical, as a door on the left provides access to the stairway to the second floor. Original display windows were quite tall, allowing as much light as possible to enter the interior. A recent restoration effort has revealed alterations made c.1910-20 at street level. These included: installation of new recessed display windows, with glazed tile below the glass; a patterned tile floor in the recessed entry with name panel; and, prism glass transoms across the storefront. These early 20th century elements are being preserved. Historic photographs are available showing both the original 1883 and the c.1915 facades. The addition to the rear elevation is not intrusive.

On the interior, few major alterations have been made. On the first floor a dropped ceiling was installed, but the original beaded wood ceiling remains intact above. No permanent walls have been added in the shop area. A staircase leading to a basement sales level has been closed, but it appears to have dated from the early 20th century remodeling. On the second floor, which was originally used for offices and a shoe repair shop, there are now two apartments. The original hallway runs from front to back at the second floor level.

8. Statement of Significance

Certifying official has considered the significance of this property in relation to other properties:

nationally statewide locally

Applicable National Register Criteria A B C D

Criteria Considerations (Exceptions) A B C D E F G

Areas of Significance (enter categories from instructions)

Period of Significance

Significant Dates

ARCHITECTURE

1883

1883

Cultural Affiliation

N.A.

Significant Person

N.A.

Architect/Builder

Unknown

State significance of property, and justify criteria, criteria considerations, and areas and periods of significance noted above.

This two story brick building is significant under Criterion C as a good example of a Type III building, a late Italianate commercial design from the 1880s. It is representative of many which once surrounded the Mount Pleasant Square.

This single storefront building is a rather conservative example of how the design elements of the Italianate style were often applied to simple brick rectangles in the late 19th century. The bracketed metal cornice with dentils was mass produced and could be ordered through catalogs. Windows are two over two double hung with segmental arched tops. Instead of elaborate cast concrete or metal hoodmolds, simple brick patterned hoods are used on this building, but keystones are added in the center of each for a "touch of class". Cast iron pilasters flanked the display windows originally. This building retains a high level of integrity, and today it is one of the most impressive on the east side of the Square. Originally however, it would have been among the simplest, plainest, buildings in the block.

The Italianate style was commonly used for commercial buildings in Mount Pleasant throughout the 1880s and '90s. Most of the brick buildings were two stories, and many were double or triple storefronts. Mass produced decorative elements were often added to the facades. While window treatment varied from very simple brick patterning to heavy cast hoodmolds, the hallmark of these buildings was a bracketed metal cornice with identification pediment, often extremely elaborate with finials, and of a size which visually threatened to topple the structure. None of these elaborate cornices survive in their entirety.

Historically, this building has always housed a shoe store. An 1883 fire destroyed an earlier building on this lot. Henry Timmerman decided to rebuild immediately, and his shoe store was open by January 1884. After working for Timmerman for many years, Burd bought the business and was responsible for the c.1910-20 remodeling. The earliest Sanborn map (1886) shows this as "Boots & Shoes" and it is listed as such on all the following maps. The tradition continues today.

See continuation sheet

9. Major Bibliographical References

Historic photographs of the building c. 1890 and c. 1915.
Historic photograph of the east side of the square.
Mt. Pleasant Journal, 31 Jan 1884

See continuation sheet

Previous documentation on file (NPS):

- preliminary determination of individual listing (36 CFR 67) has been requested
- previously listed in the National Register
- previously determined eligible by the National Register
- designated a National Historic Landmark
- recorded by Historic American Buildings Survey # _____
- recorded by Historic American Engineering Record # _____

Primary location of additional data:

- State historic preservation office
- Other State agency
- Federal agency
- Local government
- University
- Other

Specify repository: _____

10. Geographical Data

Acreage of property Less than one acre

UTM References:

A

1	5
---	---

6	2	1	7	8	0
---	---	---	---	---	---

4	5	3	5	7	6	0
---	---	---	---	---	---	---

Zone Easting Northing

C

--	--

--	--	--	--	--	--

--	--	--	--	--	--	--

B

--	--

--	--	--	--	--	--

--	--	--	--	--	--	--

Zone Easting Northing

D

--	--

--	--	--	--	--	--

--	--	--	--	--	--	--

See continuation sheet

Verbal Boundary Description

S 18' Lot 3, and N 2½' Lot 4, Blk 10, Original Town, City of Mount Pleasant.

See continuation sheet

Boundary Justification

This is the area historically associated with this resource.

See continuation sheet

11. Form Prepared By

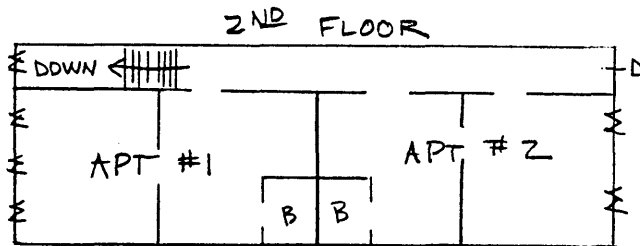
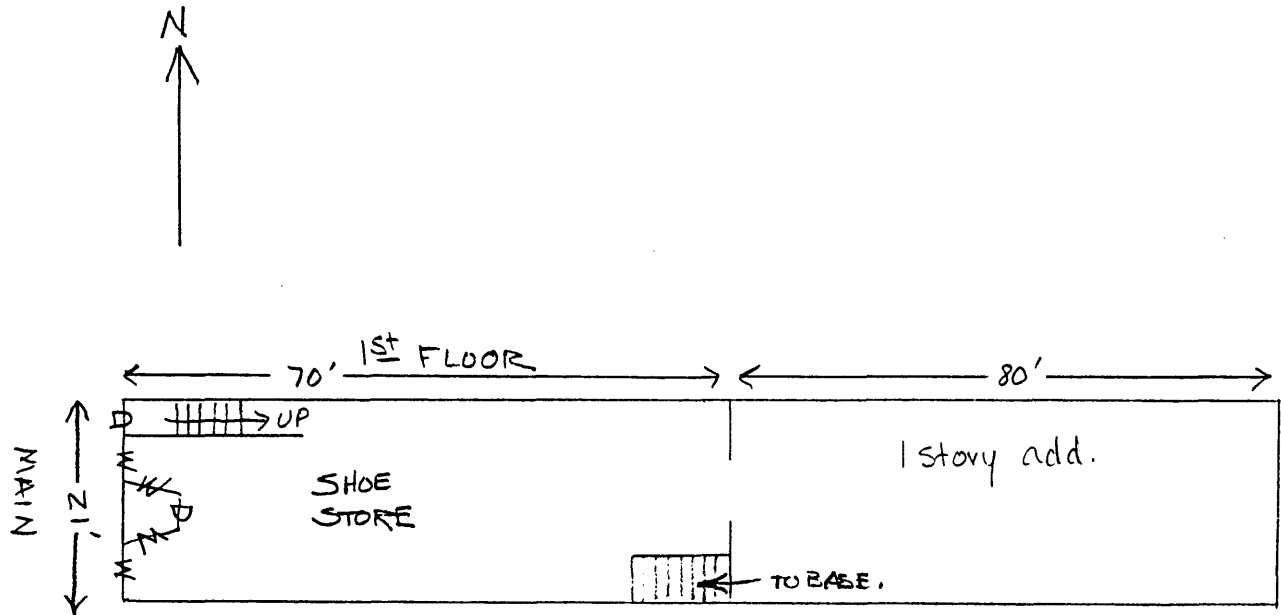
name/title	<u>Molly Myers Naumann, Consultant</u>	date	<u>(515) 682-2743</u>
organization	<u>City of Mount Pleasant</u>	date	<u>May 1991</u>
street & number	<u>City Hall, 202 W. Monroe</u>	telephone	<u>(319) 385-1470</u>
city or town	<u>Mount Pleasant</u>	state	<u>IA</u> zip code <u>52641</u>

United States Department of the Interior
National Park Service

National Register of Historic Places
Continuation Sheet

Section number 7 Page 2

CFN-259-1116

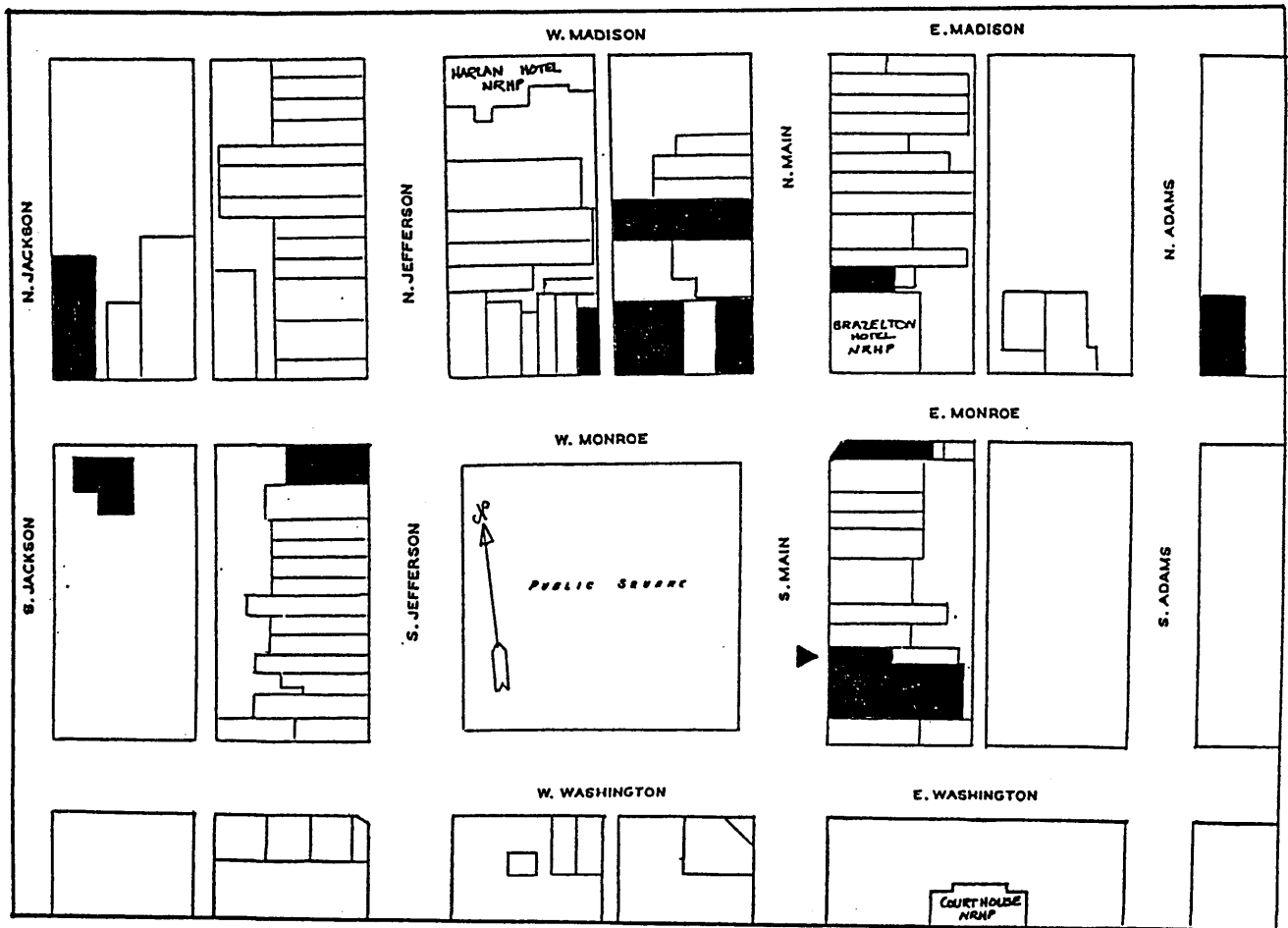


United States Department of the Interior
National Park Service

National Register of Historic Places
Continuation Sheet

Section number 7 Page 3

CFN-259-1116



MOUNT PLEASANT PUBLIC SQUARE

Shaded buildings are those being nominated.

▶ indicates specific building being nominated.

United States Department of the Interior
National Park Service

National Register of Historic Places
Continuation Sheet

Section number Photo Page 1

CFN-259-1116

