



1. TASH RANCH
  2. BEAVERHEAD COUNTY, MONTANA
  3. CHRISTINE BROWN
  4. 5-26-05
  5. MT SHPO
  6. View looking southwest at TASH RANCH  
from southbound I-15.
  7. (Roll 1, # 35)
- NR Photo # 1



1. TASH RANCH
2. BEAVERHEAD COUNTY, MONTANA
3. CHRISTINE BROWN
4. 5-26-05
5. MT SHPO
6. View looking north at south elevation of blacksmith shop.
7. (Roll 1, #1)  
NR Photo #2



1. TASH RANCH
  2. BEAVERHEAD COUNTY, MONTANA.
  3. CHRISTINE BROWN
  4. 5-26-05
  5. MT SHPO
  6. View looking southwest at east and north elevations of the blacksmith shop.
  7. (Roll 1, # 3)
- NR Photos #3



1. TASH RANCH
2. BEAVERHEAD COUNTY, MONTANA
3. CHRISTINE BROWN
4. 5-26-05
5. MT SHPO
6. View looking southwest at east elevation of blacksmith shop.
7. (Roll 1, #4)

NR Photo #4





1. TASH RANCH
2. BEAVERHEAD COUNTY, MONTANA
3. CHRISTINE BROWN
4. 5-26-05
5. MT SHPO
6. View looking northwest at cattle shed
7. (Roll 1, # 7)

NR Photo # 5)



TASH  
RANCH

1. TASH RANCH
2. BEAVERHEAD COUNTY, MONTANA.
3. CHRISTINE BROWN
4. 5-26-05
5. MT SHPO
6. View looking west at east elevation of Tash barn.
7. (Roll 1, #13)

NR Photo #6



ASH  
MANCH

1. TASH RANCH
2. BEAVERHEAD COUNTY, MONTANA
3. CHRISTINE BROWN
4. 5-26-2005
5. MT SHPO
6. View looking southwest at north shed addition to barn.
7. Roll # 1, # 20  
NR Photo # 7



1. TASH RANCH
2. BEAVERHEAD COUNTY, MONTANA.
3. CHRISTINE BROWN
4. 5-26-05
5. MT SHPO
6. View looking northwest at south  
Shed roof addition to Tash barn.
7. Roll 1, # 14  
NR Photo # 8





1. TASH RANCH

2. BEAVERHEAD COUNTY, MONTANA

3. CHRISTINE BROWN

4. 5-26-05

5. MT SHPO

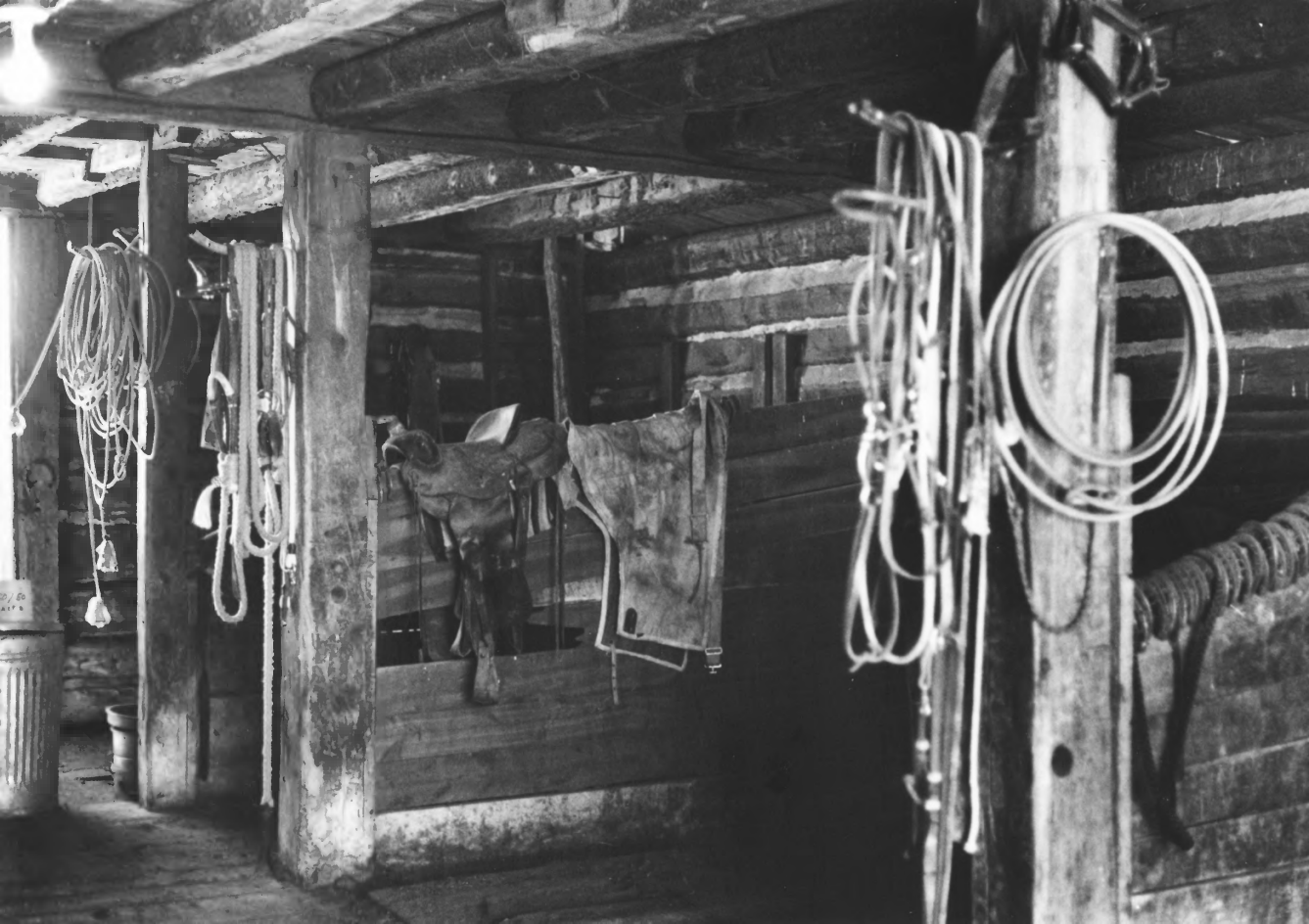
6. View looking east at west elevation  
of barn.

→ (Roll 1, #19)

NR Photo #9



1. TASH RANCH
2. BEAVERHEAD COUNTY, MONTANA
3. CHRISTINE BROWN
4. 5-26-05
5. MT SHPO
6. Interior view of barn, looking east  
at horse stalls
7. (Roll 2, #13)  
NR Photo #10



1. TASH RANCH
2. BEAVERHEAD COUNTY, MONTANA.
3. CHRISTINE BROWN
4. 5-26-05
5. MT SHPO
6. View looking southeast at interior stalls of Tash barn.
7. (Roll 2, # 2)

NR Photo # 11



1. TASH RANCH
2. BEAVERHEAD COUNTY, MONTANA
3. CHRISTINE BROWN
4. 5-26-05
5. MT SHPO
6. View of inscriptions on east door jamb inside main barn.
7. (Roll 1, # 32)

NR Photo # 12





1. TASH RANCH
  2. BEAVERHEAD COUNTY, MONTANA
  3. CHRISTINE BROWN
  4. 5-26-05
  5. MT SHPO
  6. View of "piece sur piece" log construction on north barn wall.
  7. (Rd 2, # 6)
- NR Photo #13



1. TASH RANCH
2. BEAVERHEAD COUNTY, MONTANA.
3. CHRISTINE BROWN
4. 5-26-05.
5. MT SHPO
6. View looking northeast at timber cross beam in Tash barn hay loft.
7. (Roll 2, # 7)

NR Photo # 14



1. TASH RANCH
  2. BEAVERHEAD COUNTY, MONTANA
  3. CHRISTINE BROWN
  4. 5-26-05
  5. MT SHPO
  6. View looking southwest at north and east elevations of Springhouse.
  7. (Roll 1, # 8)
- NR Photo #15



1. TASH RANCH
2. BEAVERHEAD COUNTY, MONTANA
3. CHRISTINE BROWN
4. 5-26-05
5. MT SHPO
6. View looking northwest at south and east elevations of springhouse.
7. (Roll 1, #10)

NR Photo #16

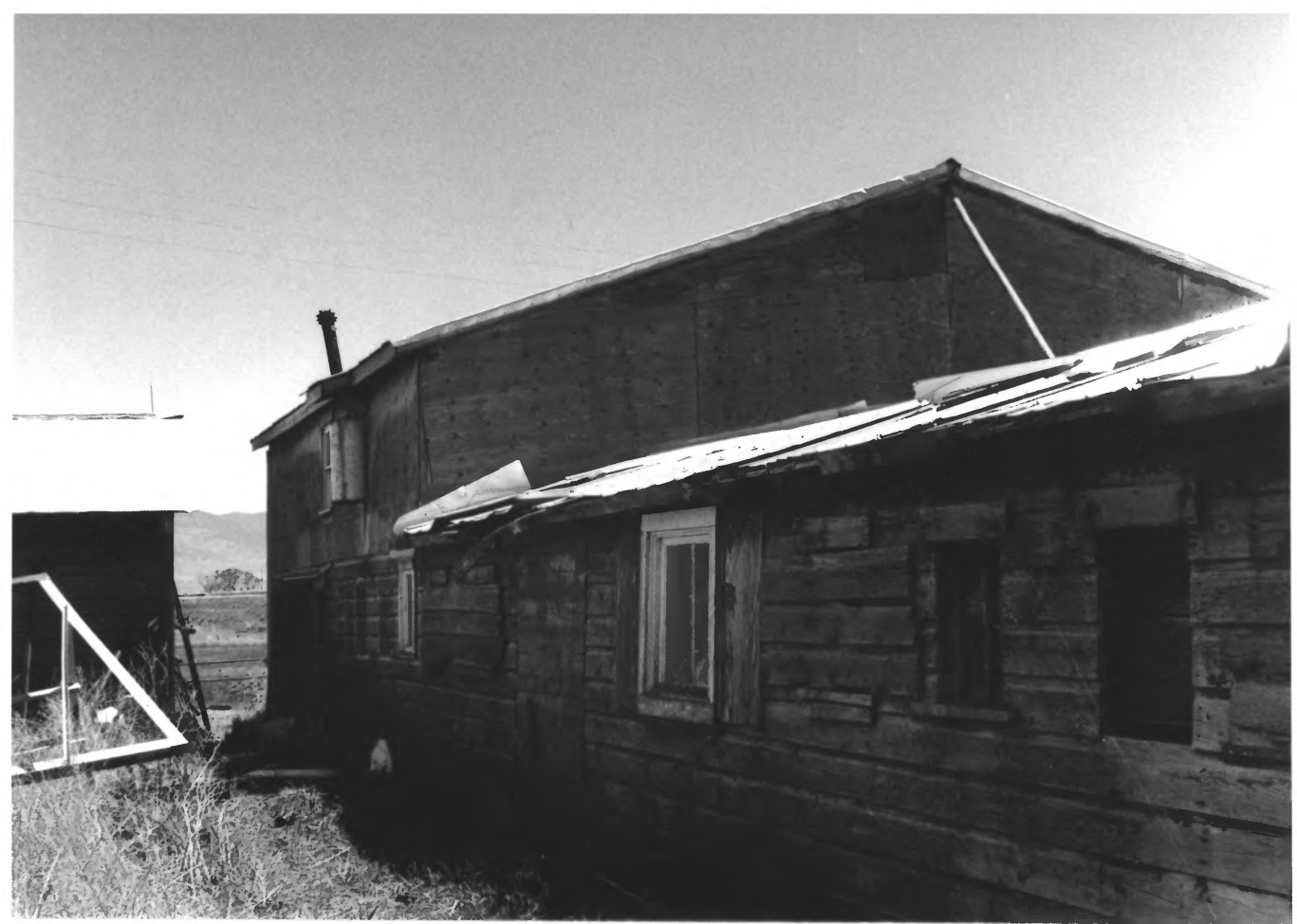




1. TASH RANCH
2. BEAVERHEAD COUNTY, MONTANA
3. CHRISTINE BROWN
4. 5-26-05
5. MT SHPO
6. View looking northwest at south and west elevations of dairy barn.
7. (Roll #1, #16)  
NR Photo #17

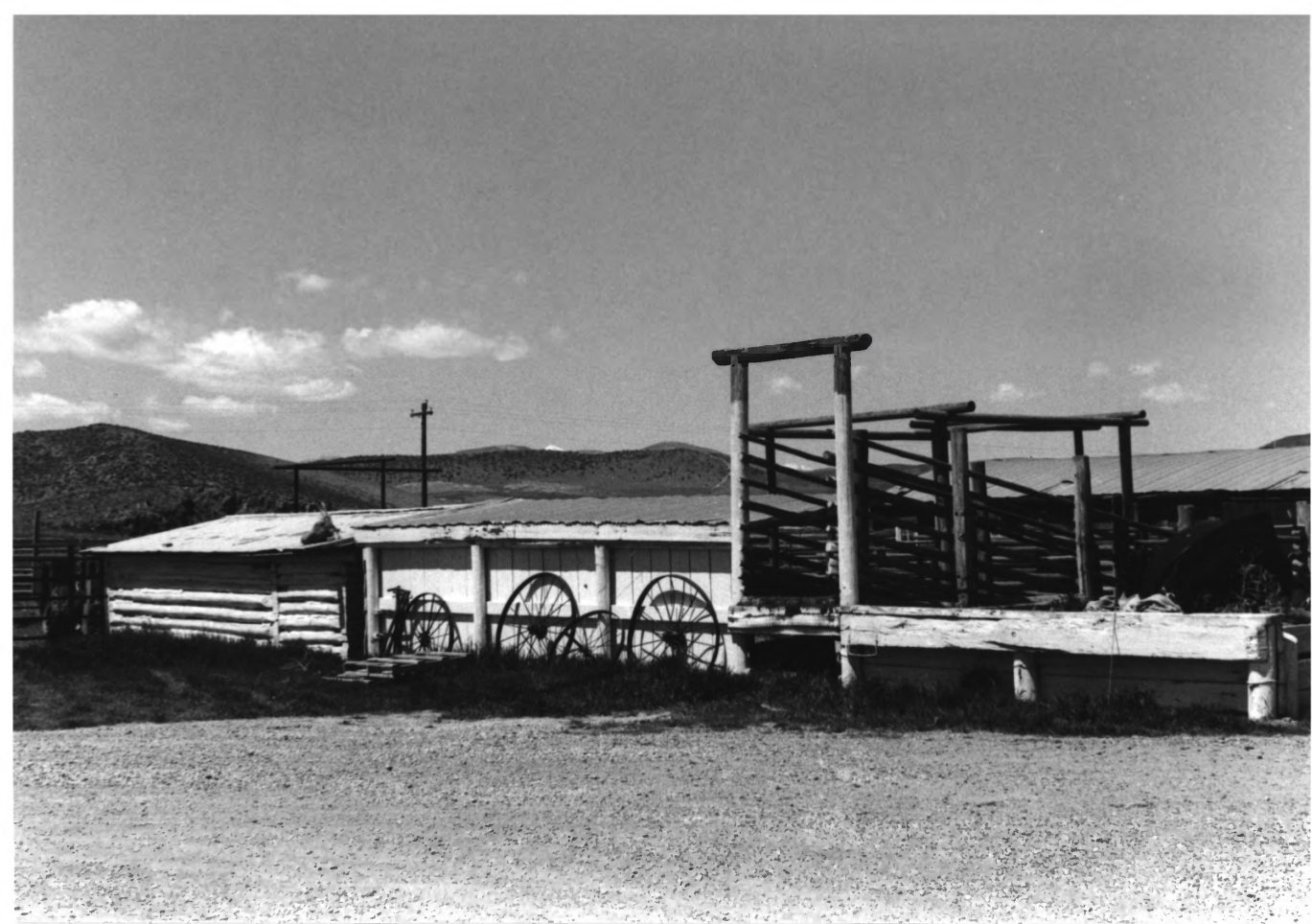


1. TASH RANCH
2. BEAVERHEAD COUNTY, MONTANA
3. CHRISTINE BROWN
4. 5-26-05
5. MT SHPO
6. View looking northwest at south elevation of dairy barn
7. (Roll 1, # 17 )  
NR Photo # 18



1. TASH RANCH
2. BEAVERHEAD COUNTY, MONTANA
3. CHRISTINE BROWN
4. 5-26-05
5. MT SHPO
6. View looking east at north elevation of dairy barn.
7. (Roll 1, # 18)

NR Photo # 19



1. TASH RANCH
  2. BEAVERHEAD COUNTY, MONTANA
  3. CHRISTINE BROWN
  4. 5-26-2005
  5. MT SHPO
  6. View: looking west-northwest at log cattle shed (left), shed (middle), and cattle chute (right).
  - 7 (Roll # 1, # 22)
- NR Photo #20





1. TISH RANCH
2. BEAVERHEAD COUNTY, MONTANA
3. CHRISTINE BROWN
4. 5-26-2005
5. MT SHPO
6. View looking southwest at north elevation  
of <sup>log</sup> Cattle Shed. (H)
7. (Roll # 1, # 23)  
NR Photo # 21



1. TASH RANCH
2. BEAVERHEAD COUNTY, MONTANA
3. CHRISTINE BROWN
4. 5-26-2005
5. MT SHPO
6. View looking west-northwest at south elevation of log cattle shed.
7. (Roll # 1, # 24)

NR Photo #22



1. TASH RANCH
  2. BEAVERHEAD COUNTY, MONTANA
  3. CHRISTINE BROWN
  4. 5-26-2005
  5. MT SHPO
  6. View looking southwest at oil house (left)  
and outhouse (right)
  7. (Roll 1, #25)
- NIR Photo #23



1. TASH RANCH
  2. BEAVERHEAD COUNTY, MONTANA
  3. CHRISTINE BROWN
  4. 5-26-2005
  5. MT SHPO
  6. View northwest of oil house and tanks
  7. (Roll # 1, #26)
- NR Photo #24





1. TASH RANCH
2. BEAVERHEAD COUNTY, MONTANA
3. CHRISTINE BROWN
4. 5-26-2005
5. MT SHPO
6. View southwest of bunkhouse
7. (Roll 1, #28)

NR Photo #25



1. TASH RANCH
2. BEAVERHEAD COUNTY, MONTANA
3. CHRISTINE BROWN
4. 5-26-05
5. MT SHPO
6. View looking northwest at east and south elevations of bunkhouse.
7. (Roll 1, #29)

NR Photo #26



1. TASH RANCH
2. BEAVERHEAD COUNTY, MONTANA
3. CHRISTINE BROWN
4. 5-26-05
5. View of corner notching on bunkhouse,  
southeast corner
6. MT SHPO
7. (Roll 1, #30)  
NR Photo #27



1. TASH RANCH
2. BEAVERHEAD COUNTY, MONTANA
3. CHRISTINE BROWN
4. 5-26-05
5. MT SAPO
6. View looking northeast at south elevation of farmhouse.
7. (Roll 1, # 31)

NR Photo # 28





1. TASH RANCH
2. BEAVERHEAD COUNTY, MONTANA
3. CHRISTINE BROWN
4. 5-26-05
5. MT SHPO
6. View looking northwest at cattle pasture, from blacksmith shop.
7. (Roll 1, #6)

NR Photo #29