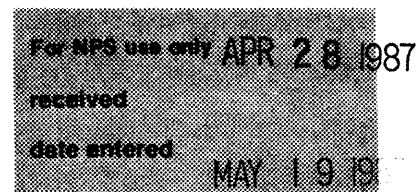


**United States Department of the Interior
National Park Service**

**National Register of Historic Places
Inventory—Nomination Form**



Continuation sheet

Item number

8

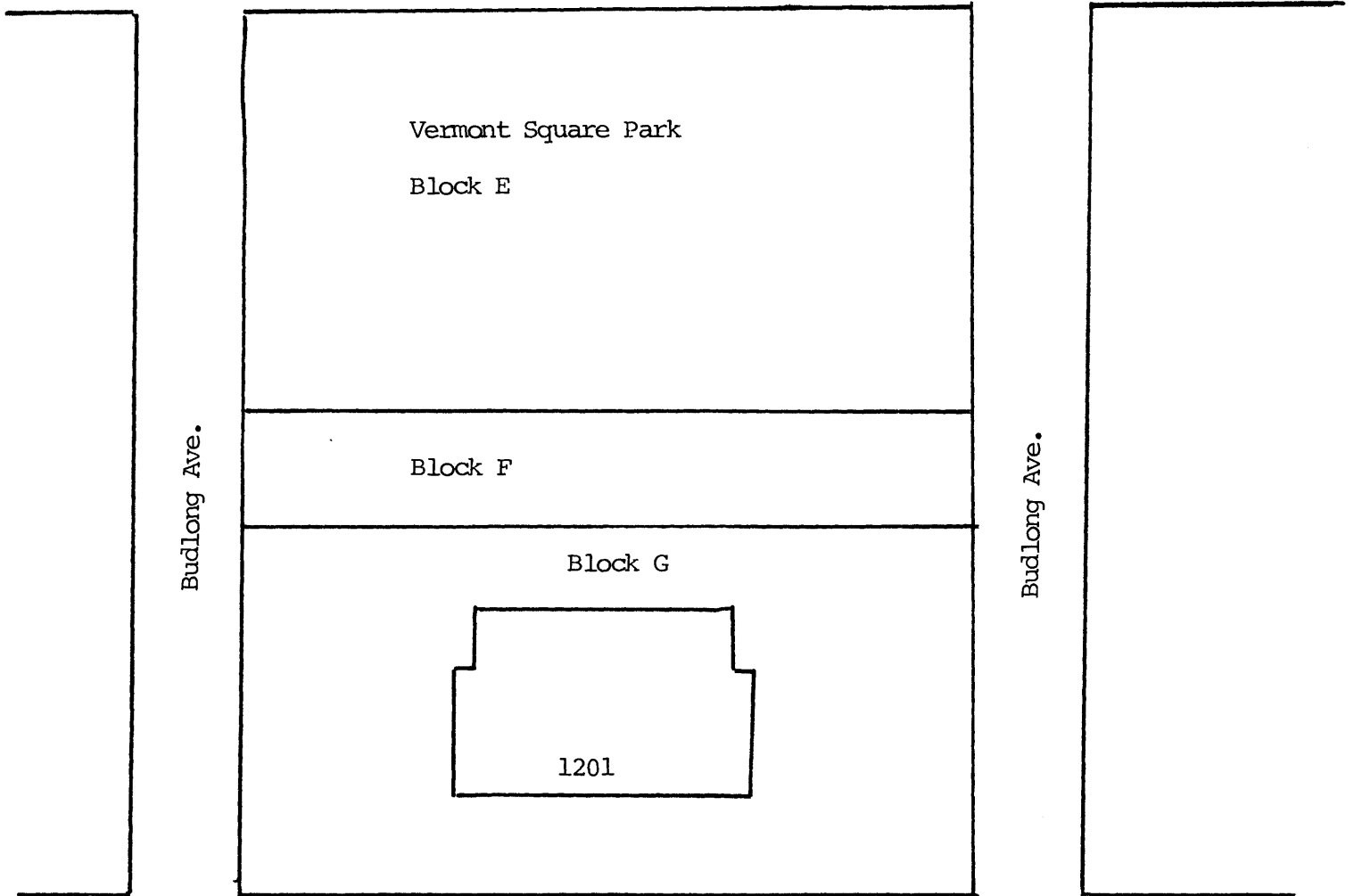
Page

1

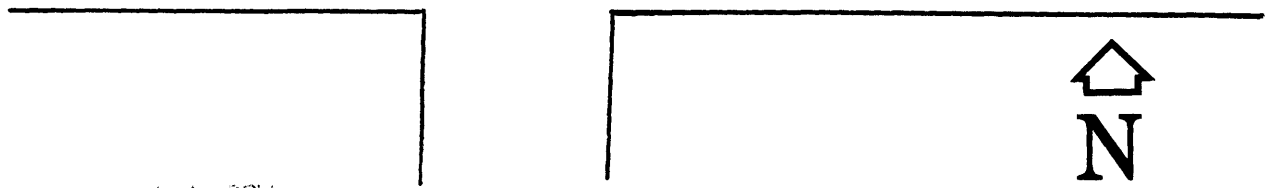
1. VERMONT SQUARE BRANCH
1201 W. 48th St.

The Vermont Square Branch Library was the first branch building ever constructed by the Library Board. It is the oldest of 3 surviving Carnegie Grant buildings in Los Angeles between 1911 and 1916. This building marks the beginning of the largest branch library system in the country. The style of the building represents an unusual combination of Italian Renaissance and Prairie School architecture, reflecting both the Mediterranean and Revival trend inspired by California's Mediterranean climate, and the influence of midwestern contemporary architecture due to the large influx of midwesterners in southern California around the turn of the century.

BRANCH LIBRARIES, LOS ANGELES, CA
#1 Vermont Square Branch, 1201 W.
48th St.
1 inch=60 feet



W. 48th St.



AUG 1 1967