



150

United States Department of the Interior
National Park Service

National Register of Historic Places Registration Form

This form is for use in nominating or requesting determinations for individual properties and districts. See instructions in National Register Bulletin, *How to Complete the National Register of Historic Places Registration Form*. If any item does not apply to the property being documented, enter "N/A" for "not applicable." For functions, architectural classification, materials, and areas of significance, enter only categories and subcategories from the instructions. **Place additional certification comments, entries, and narrative items on continuation sheets if needed (NPS Form 10-900a).**

1. Name of Property

historic name Oakley High School Stadium

other names/site number Irwin Stadium; Irwin Field; KHRI# 109-51

2. Location

street & number 118 West 7th Street not for publication

city or town Oakley vicinity

state Kansas code KS county Logan Code 109 zip code 67748

3. State/Federal Agency Certification

As the designated authority under the National Historic Preservation Act, as amended,

I hereby certify that this x nomination request for determination of eligibility meets the documentation standards for registering properties in the National Register of Historic Places and meets the procedural and professional requirements set forth in 36 CFR Part 60.

In my opinion, the property x meets does not meet the National Register Criteria. I recommend that this property be considered significant at the following level(s) of significance:

 national statewide x local

Patrick Zelmer
Signature of certifying official

2-11-13
Date

DSHPO
Title

State or Federal agency/bureau or Tribal Government

In my opinion, the property meets does not meet the National Register criteria.

Signature of commenting official

Date

Title State or Federal agency/bureau or Tribal Government

4. National Park Service Certification

I, hereby, certify that this property is:

entered in the National Register determined eligible for the National Register

 determined not eligible for the National Register removed from the National Register

 other (explain:)

Joe Edison H. Beall
Signature of the Keeper

Date of Action

5. Classification

Ownership of Property
(Check as many boxes as apply)

<input type="checkbox"/>	private
<input checked="" type="checkbox"/>	public - Local
<input type="checkbox"/>	public - State
<input type="checkbox"/>	public - Federal

Category of Property
(Check only one box)

<input checked="" type="checkbox"/>	building(s)
<input type="checkbox"/>	district
<input type="checkbox"/>	site
<input type="checkbox"/>	structure
<input type="checkbox"/>	object

Number of Resources within Property
(Do not include previously listed resources in the count.)

Contributing	Noncontributing	
1	1	buildings
		district
1		site
		structure
		object
2	1	Total

Name of related multiple property listing
(Enter "N/A" if property is not part of a multiple property listing)

New Deal-era Resources of Kansas

Number of contributing resources previously listed in the National Register

0

6. Function or Use

Historic Functions
(Enter categories from instructions)

Recreation and Culture: Sports Facility

Current Functions
(Enter categories from instructions)

Recreation and Culture: Sports Facility

7. Description

Architectural Classification
(Enter categories from instructions)

Modern Movement: Moderne

Materials
(Enter categories from instructions)

foundation: Concrete
walls: Limestone

roof: N/A
other: _____

Narrative Description

(Describe the historic and current physical appearance of the property. Explain contributing and noncontributing resources if necessary. Begin with a **summary paragraph** that briefly describes the general characteristics of the property, such as its location, setting, size, and significant features.)

Summary

Oakley High School Stadium is located on the campus of Oakley High School in Logan County, Kansas. Oakley is a small city of approximately 2,100 people, located at the intersection of Interstate 70, U.S. Highway 40, and U.S. Highway 83. The stadium is publicly owned by the Unified School District 274 and has been in continuous use since its construction in 1938.

Narrative Description

The stadium is within the local school district campus on the north edge of town. It is situated on an east-west axis along West 7th Street, with the middle school to the east, a grade school to the southwest, and the high school to the north. It is an outdoor seating structure facing a standard 100-yard football field with a natural grass surface encircled by a 400-meter track that has a rubberized surface. The stadium includes two locker rooms, men's and women's restrooms, a storage space that serves as a tornado shelter for students, a press box, and fan seating.

The physical appearance of the building is marked by symmetrical construction of limestone blocks. The stadium's north façade faces West 7th Street and features nine bays defined by projecting stone columns. The central bay features a bell tower, which has been modified to accommodate a newer announcer's box. Each bay flanking the central tower includes two original 20-pane steel windows with hoppers.

The bleachers comprise the entire south face of the stadium, and face south toward the track and football field. There are four sets of curved stairs providing access to three sections of bleachers. The bleachers are concrete and the row seating is metal. The cap on the end walls was likely originally concrete that has been stuccoed. A central announcer's box was first added in the 1960s and was renovated in 1987 and again in 2009 to reflect its current appearance (Figures 4-6). It is made of concrete block and is accessed through a door on the east side of the box.

Each side elevation (east and west) includes two openings with slight concrete overhangs and replacement doors – one leading to a public restroom and the other to locker rooms beneath the bleachers. The interior of the stadium features concrete floors and concrete block or stone walls. The interior spaces and ceiling heights conform to the design of the underside of the stadium seating.

The nomination boundaries are defined by the fence surrounding the adjacent playing field and include the contributing stadium and site and non-contributing concession stand building.

Integrity

Except for the loss of some historic materials, the stadium retains key aspects of integrity including location, design, setting, materials, workmanship, feeling, and association. Losses of historic materials include the replacement of the original limestone foundation with concrete in 1990. And, what used to be the bell tower is now a press box, with additional concrete blocks providing structural support.

8. Statement of Significance

Applicable National Register Criteria

(Mark "x" in one or more boxes for the criteria qualifying the property for National Register listing)

- A Property is associated with events that have made a significant contribution to the broad patterns of our history.
- B Property is associated with the lives of persons significant in our past.
- C Property embodies the distinctive characteristics of a type, period, or method of construction or represents the work of a master, or possesses high artistic values, or represents a significant and distinguishable entity whose components lack individual distinction.
- D Property has yielded, or is likely to yield, information important in prehistory or history.

Areas of Significance

(Enter categories from instructions)

- Government
- Entertainment/Recreation
- Architecture
-
-
-

Period of Significance

1938-1963

Significant Dates

1938, 1939

Significant Person

(Complete only if Criterion B is marked above)

N/A

Cultural Affiliation

N/A

Architect/Builder

Marshon, Lewis (builder); WPA Labor

Criteria Considerations

(Mark "x" in all the boxes that apply)

Property is:

- A Owned by a religious institution or used for religious purposes.
- B removed from its original location.
- C a birthplace or grave.
- D a cemetery.
- E a reconstructed building, object, or structure.
- F a commemorative property.
- G less than 50 years old or achieving significance within the past 50 years.

Period of Significance (justification)

The period of significance begins in 1938 with the construction of the stadium and extends to 1963 – the fifty-year cut-off date established by the National Park Service to provide sufficient passage of time to allow objective evaluation of the historic resource eligibility at the time of its listing.

Criteria Considerations (explanation, if necessary)

N/A

Statement of Significance

Summary (provide a summary paragraph that includes level of significance and applicable criteria)

The construction of Oakley High School Stadium was financed through the Works Progress Administration (WPA), and the facility has hosted football games and track meets since its completion in 1939. It is nominated to the National Register of Historic Places for its local significance under Criterion A in the areas of Entertainment/Recreation and Government and Criterion C in the area of Architecture. It is nominated as part of the *New Deal-era Resources of Kansas* multiple property submission, and is an example of the *Social and Recreational* property type outlined in the multiple property documentation form.

Elaboration

Oakley is the county seat of Logan County in northwest Kansas. Settlers first arrived in this area in the late 1870s and early 1880s, and the city registered a population of nearly a few hundred people in 1890. By the time Frank Blackmar published his history of Kansas in 1912, Oakley had become a "well appointed little city with cement sidewalks, electric lights, ice plant, a commercial club, an opera house, a county high school, flour mill, steam laundry, bottling works, creamery, cold storage plant, 2 banks, a machine shop, a weekly newspaper (the Graphic), telegraph and express offices, and an international money order post office with one rural route."¹

The WPA Guide to 1930s Kansas provides a snapshot of Oakley at about the time the stadium was being constructed. Oakley had a population of 1,159 in the 1930s and was the largest town in Logan County. It had "modern accommodations (municipal swimming pool and golf course), and adequate transportation facilities provided by the transcontinental highway and the Union Pacific Railroad..."² Several attempts to move the county seat from the much smaller Russell Springs did not materialize until 1963.³

Located in northwest Kansas, Logan County was situated within one of the hardest hit areas of the Dust Bowl, which encompassed all of western Kansas, eastern Colorado, and the panhandles of Oklahoma and Texas.⁴ As a result of the tough economic times, Oakley leaders sought funding and labor assistance through federal New Deal programs, including the WPA. In addition to the high school stadium, known WPA-financed projects in Oakley included improvements to the school grounds and the addition of an industrial arts building and bus barn.⁵

Throughout the last half of the 1930s, the WPA constructed 619 buildings in the state of Kansas. Many of those projects were recreational facilities, including 52 stadiums, since the hours of work in America had been limited by recent legislation, the demand for leisure activities had increased even as the economic situation deteriorated.⁶ The stadium construction was part of a broader effort to improve school facilities in Oakley that began as early as 1936 when the Oakley school district purchased land from Justine W. Young for \$1200. When speaking to the local Chamber of Commerce in 1938, Paul E. Jackson, office engineer of the WPA district headquarters at Hays stated that the Oakley school project was "one of the largest projects in the district at this time" and he complimented the community and project

¹ Frank Blackmar, *Kansas: A Cyclopedia of State History, volume II* (Chicago: Standard Publishing Co., 1912), 378-379. Transcription accessed 25 May 2012 online at: <http://skyways.lib.ks.us/genweb/archives/1912/>

² James R. Shortridge, ed. *The WPA Guide to 1930s Kansas* (Lawrence: University Press of Kansas, 1984), 366. Originally published by Viking Press in 1939 under the title *Kansas: A Guide to the Sunflower State*.

³ Charles Hall and Richard Pankratz, "Old Logan County Courthouse" National Register of Historic Places nomination (Topeka: Kansas Historical Society, 1971, amended 1975). Accessed 31 May 2012 online at: http://www.kshs.org/resource/national_register/nominationsNRDB/Logan_OldLoganCountyCourthouseNR.pdf

⁴ R. Douglas Hurt, *The Dust Bowl: An Agricultural and Social History* (Chicago: Nelson-Hall, 1984), viii. For additional context on the Dust Bowl and the Great Depression, see Donald Worster, *Dust Bowl: The Southern Plains in the 1930s* (New York: Oxford University Press, 1979); and Elizabeth Rosin, "New Deal-era Resources of Kansas" National Register of Historic Places Multiple Property Documentation Form (Topeka, KS: Kansas Historical Society, 2002).

⁵ Works Progress Administration, Central Office Reference Card Location Project File. (KSHS Library/Archive: MF 6038-6042)

⁶ Rosin, E-20. New Deal-financed stadiums in Kansas that are listed in the National Register include: Newton Field (Harvey County) and Lane County Community High School stadium (Lane County).

sponsors for keeping costs low. The newspaper reported that “the entire school project in Oakley will total more than \$60,000.”⁷ The school’s cost for the project as \$17,000.⁸

Changes to the school facilities began in the mid-1930s. In October 1936, “Oakley’s first real school building,” which had served the community for fifty years, was razed by WPA workers to make room for a native stone garage and bus building.⁹ Plans were announced for new tennis courts, a place for horseshoes, and general beautification of the school grounds.¹⁰ The existing football field was re-sodded in April 1938, thanks to donations from the Chamber of Commerce and the help of 20 volunteers. F. W. Irwin furnished the sod from his pasture northeast of Oakley.¹¹

Work began on the stadium in late 1938, probably after the football season ended. Lewis Mershon was the lead builder for the stadium project. According to his son, Jerry Mershon, his father was the project director and the foreman. Using a team of only unskilled laborers made up of local farmers who were struggling financially, Lewis Mershon was able to complete the project to specifications and within budget. The foundation trench was dug and concrete poured in mid-December 1938.¹² Jerry Mershon states that his father was a Republican and that local support won his father the job because he was a trusted local builder and the people of Oakley did not want an architect from out of town to get the job.¹³

The limestone used for the project was quarried locally, and the rocks were cut to measure 18 x 10 inches. Men did all of the work by hand with only a gas powered saw to cut the large blocks.¹⁴ According to Delma Dible, a local historian and descendant of one of the workmen, workers carried their lunch with them at 7:00 a.m. when a truck picked them up at the railroad roundhouse. They then worked until 7:00 p.m. when they were returned to Oakley, 18 miles from the limestone quarry. Some of the handmade, historic tools used to cut the stone and build the stadium are on display at the Fick Fossil Museum in Oakley.¹⁵

An article in the September 15, 1939 edition of the *Oakley Graphic* noted that work on the stadium was nearing completion, and Mershon was quoted as saying, “We hope to have the interior ready for use at the first home game.” The stadium was described as 165 feet, 8 inches in length, 44 feet wide, and 25 feet high. The stadium seating capacity was noted as 1,250. The interior included dressing rooms and showers for both home and visiting teams, and in each end of the stadium there were public restrooms, with the remainder of the interior being used for a public rifle range. Today, the interior is largely unchanged, although there are no rifles being fired.

The stadium was first used on October 6, 1939 for the first home football game of the season. The *Oakley Graphic* called this matchup “the annual football classic” between the Oakley Plainsmen played the Colby Eagles. The game began at 8:00 p.m., a later time than that in previous years due to the installation of the modern floodlights. Although the newspaper reminded readers that Oakley had defeated Colby “seven times in the last eleven years,” the Plainsmen were “trounced” by the “powerful” Eagles.¹⁶

The Oakley High School athletic field and later the stadium was named for Frank W. Irwin, who served the school district in various capacities beginning in 1886. He began his involvement with the Oakley district at its formation, serving as a teacher from 1886 until 1910. Irwin was the high school principal from 1903-1904, and the superintendent from 1903-1905 and again from 1910-1911. He served on the school board from 1919 until 1941. Early school yearbooks refer to the man as a “school man in the strongest sense of the word” and an “educational stronghold.”

According to Warren Park, a 1966 Oakley High School graduate, the bell that used to be in the tower of the stadium disappeared shortly after his graduation. The bell had been removed to make way for the press box that was constructed

⁷ *Oakley Graphic*, 13 February 1938.

⁸ Fred Teeter, *One Hundred Years of Oakley Schools* (Hays, KS: Fort Hays State University, 1995).

⁹ *Oakley Graphic*, 23 October 1936.

¹⁰ *Oakley Graphic*, 6 March 1936.

¹¹ *Oakley Graphic*, 8 April 1938.

¹² *Oakley Graphic*, 16 December 1938.

¹³ Jerry Mershon, Personal Interview by Kyndal Maurath and Levi Hefner, 30 May 2011.

¹⁴ The *Oakley Graphic* noted on 9 July 1938 that Carl Talley had built a new machine for precision cutting and faster work at the local quarries.

¹⁵ Delma Dible, Personal Interview by Kyndal Maurath, 12 May 2011.

¹⁶ *Oakley Graphic*, 6 October 1939; 13 October 1939.

in 1960s, and the bell disappeared. Although many rumors about the eventual location of the bell circulated at the time of its disappearance, the story that most graduates agree upon is that a former superintendent took the removed bell to his retirement cabin in Colorado. Although local historians and newspaper editors were enlisted to attempt to track down the historical bell, no one has come forth to provide the needed information as to the artifact's current owner or location.¹⁷

One famous alumna, Zelma Hurst, would have witnessed the construction of Oakley High School Stadium. She was one of a very few African American students that attended school in Logan County, and because of the small minority population of the town, schools were not segregated. After Hurst graduated in 1940, she married Andrew Henderson and moved to Topeka, Kansas, where her own children were forced to bus across town to attend a segregated school, while a school for white children was closer to her home. She participated in the landmark case *Brown vs. Topeka Board of Education* as one of the 13 parent plaintiffs, and she used her Oakley High School experiences in her testimony in the pivotal civic rights case.

The stadium has hosted high school football games and track meets continuously since its completion in 1939. Oakley High School has competed with a variety of teams throughout its athletic events history, and the leagues have shifted over the years due to fluctuating student populations. From 1946-1949, Oakley belonged to the WKEA League, and was crowned football champions in 1949. From 1950-1952, Oakley belonged to the UP League, and for many years beginning in 1953 belonged to the NWKL League. Opponents have long included Colby, Atwood, Wakeeny, Quinter, St. Francis, Goodland, Hoxie, and Hill City. The junior high football and track teams have also competed at the stadium.

Architecture

According to the "New Deal-era Resources of Kansas" multiple property documentation form, "the styling of these resources [social and recreational facilities] varied from rustic to Moderne."¹⁸ Architectural historian Alan Gowans further defines government-sponsored architecture, suggesting the New Deal-era building programs favored a combination of Art Deco – which incorporated stylized shapes, zigzags, and vertical accents – and Moderne – which emphasized round shapes and horizontal accents.¹⁹ In terms of materials, "these facilities were generally constructed in a manner that was more labor intensive than might otherwise be typical."²⁰ For instance, a stadium or picnic facilities were constructed of stone, usually quarried locally, and concrete rather than of wood.

This is certainly the case with the Oakley High School Stadium, which exhibits symmetry, vertical and horizontal lines, and rounded features, all of which gives it a WPA Moderne appearance. Its stylistic references to Art Deco and Moderne are subtle, and a more appropriate description of the stadium's style may be Western Kansas Stone Vernacular with Restrained Art Moderne/Deco Influences.

Summary

Completed in 1939, Oakley High School Stadium is nominated to the National Register of Historic Places for its local significance under Criterion A in the areas of Entertainment/Recreation and Government and Criterion C in the area of Architecture. It is nominated as part of the "New Deal-era Resources of Kansas" multiple property nomination, and is an example of the *Social and Recreational* property type outlined in the multiple property documentation form.

¹⁷ Warren Park, Personal Interview by Valerie Brown-Kuchera, 30 November 2011.

¹⁸ Rosin, F-29.

¹⁹ Alan Gowans, *Styles and Types of North American Architecture: Social Function and Cultural Expression* (New York: HarperCollins Publishers, 1992), 250.

²⁰ Rosin, F-29.

9. Major Bibliographical References

"Big Game Tonight." *Oakley Graphic*. 6 October 1939.

Blackmar, Frank. *Kansas: A Cyclopedia of State History, volume II*. Chicago: Standard Publishing Co., 1912.
Transcription accessed 25 May 2012 online at: <http://skyways.lib.ks.us/genweb/archives/1912/>

Dible, Delma. Personal Interview by Kyndal Maurath. 12 May 2011.

"F.W. Irwin, Principal." *The Prairie Queen*. Oakley Public School Yearbook. 1912.

Glover, Barb. "Pictures Recall quarry Days." *Oakley Graphic*. 12 April 2000.

Gowans, Alan. *Styles and Types of North American Architecture: Social Function and Cultural Expression*. New York: HarperCollins Publishers, 1992.

Hall, Charles, and Richard Pankratz. "Old Logan County Courthouse" National Register of Historic Places nomination. Topeka: Kansas Historical Society, 1971, amended 1975. Accessed 31 May 2012 online at: http://www.kshs.org/resource/national_register/nominationsNRDB/Logan_OldLoganCountyCourthouseNR.pdf

Hurt, R. Douglas. *The Dust Bowl: An Agricultural and Social History*. Chicago: Nelson-Hall, 1984.

Maurath, Kyndal. *Irwin Stadium Photographic Collection*. Oakley High School, 2011.

Mershon, Jerry. Personal Interview by Kyndal Maurath and Levi Hefner. 30 May 2011.

Mershon, Lewis. "Historic Tools Collection: Used to Build WPA Stadium" Fick Fossil Museum Holdings. Oakley, Kansas, 2011.

Morel, Larry, U.S.D. 274 Building Superintendent. *Summer Project Log*. "Summer of 1990 Projects." 1990.

Morris, Jeffrey B. and Richard Morris, eds. "The WPA." *Encyclopedia of American History 7th Edition*. 1996.

Oakley, Kansas Map. U.S. Geological Survey. January 2011.

"OHS Students Work on Historical Project." *Oakley Graphic*. 20 April 2011.

Park, Warren. Personal Interview by Valerie Brown-Kuchera. 30 November 2011.

"Proposed Athletic Stadium." *The Plainsmen*. 1937 Oakley School Yearbook.

"Rooted in Oakley." *The Salina Journal*. 15 May 2004.

Rosin, Elizabeth. "New Deal-era Resources of Kansas" National Register of Historic Places Multiple Property Documentation Form. Topeka, KS: Kansas Historical Society, 2002. Accessed online 31 May 2012 at: <http://www.kshs.org/p/thematic-nominations/14634>.

Singleton, Jeff. *The American Dole: Unemployment Relief and the Welfare State In the Great Depression*. 2000.

Shortridge, James R., ed. *The WPA Guide to 1930s Kansas*. Lawrence: University Press of Kansas, 1984. Originally published by Viking Press in 1939 under the title *Kansas: A Guide to the Sunflower State*.

Teeter, Fred. *One Hundred Years of Oakley Schools*. Hays, KS: Fort Hays State University, 1995.

The Plainsmen. 1937 Oakley School Yearbook.

The Plainsmen. 1946 Oakley School Yearbook.

The Plainsmen. 1970 Oakley School Yearbook.

"Track Squad. *The Plainsmen*. 1949 Oakley School Yearbook. Pg. 35.

Works Progress Administration, Central Office Reference Card Location Project File. (KSHS Library/Archive: MF 6038-6042)

Worster, Donald. *Dust Bowl: The Southern Plains in the 1930s*. New York: Oxford University Press, 1979.

"Zelma Henderson Obituary." *The Capital Journal*. 24 May 2008.

Previous documentation on file (NPS):

- preliminary determination of individual listing (36 CFR 67 has been Requested)
- previously listed in the National Register
- previously determined eligible by the National Register
- designated a National Historic Landmark
- recorded by Historic American Buildings Survey # _____
- recorded by Historic American Engineering Record # _____

Primary location of additional data:

- State Historic Preservation Office
 - Other State agency
 - Federal agency
 - Local government
 - University
 - Other
- Name of repository: **Kansas Historical Society**

Historic Resources Survey Number (if assigned): N/A

10. Geographical Data

Acreage of Property Approximately 6
(Do not include previously listed resource acreage)

UTM References (See Figure 1 for Site Map and Latitude / Longitude Coordinates.)

(Place additional UTM references on a continuation sheet)

1	_____	_____	_____	3	_____	_____	_____
	Zone	Easting	Northing		Zone	Easting	Northing
2	_____	_____	_____	4	_____	_____	_____
	Zone	Easting	Northing		Zone	Easting	Northing

Verbal Boundary Description (describe the boundaries of the property)

The nominated property includes the Oakley High School Stadium and the adjacent athletic field, all of which is enclosed within a fence. See Figure 1 for lat/long coordinates of boundary.

This property is within the parcel described as follows: All Blocks 10, 11, 12, 25, and lots 17 thru 21 of Block 22 in Glicks Addition, Oakley City.

Boundary Justification (explain why the boundaries were selected)

These boundaries encompass the stadium and the adjacent athletic field, which is historically associated with the Works Progress Administration's construction program.

11. Form Prepared By

name/title Valerie Brown-Kuchera; Gifted Facilitator for Oakley Schools; Jerrick Keller, Student; Kyndal Maurath, Student; Levi Hefner, Student

organization Oakley High School Date May 20, 2011

street & number 785-754-8125 – Valerie
118 W. 7th Street telephone Kuchera, Teacher

city or town Oakley State Ks zip code 67748

e-mail vbrown@nkesc.org

Additional Documentation

Submit the following items with the completed form:

- **Maps:** A **USGS map** (7.5 or 15 minute series) indicating the property's location.
A **Sketch map** for historic districts and properties having large acreage or numerous resources. Key all photographs to this map.
 - **Continuation Sheets**
 - **Additional items:** (Check with the SHPO or FPO for any additional items)
-

Photographs:

Name of Property: Oakley High School Stadium
City or Vicinity: Oakley
County/State: Logan, Kansas
Photographer: Sarah Martin
Date: April 25, 2012
Sketch Map: See Figure 3

Description of Photograph(s) and number:

- 1 of 11 North elevation of stadium (along W 7th Street), facing SW
- 2 of 11 Close-up of north elevation of stadium, facing SW
- 3 of 11 East (side) and south elevations of stadium, noncontributing concession stand at right, facing NW
- 4 of 11 South elevation of stadium, showing track in foreground, facing NW
- 5 of 11 Football field at left, track, and stadium at right, facing W
- 6 of 11 West (side) and south elevations, facing NE
- 7 of 11 Overview of stadium, track, and football field from the northwest corner of the property, facing SE
- 8 of 11 West elevation, showing entrances to locker room and restroom, facing NE
- 9 of 11 Interior of women's restroom beneath stadium seats, facing SE
- 10 of 11 Interior of locker room beneath stadium seats, facing E
- 11 of 11 Interior – storage space beneath stadium seats, facing W

Oakley High School Stadium
Name of Property

Logan County, Kansas
County and State

Property Owner:

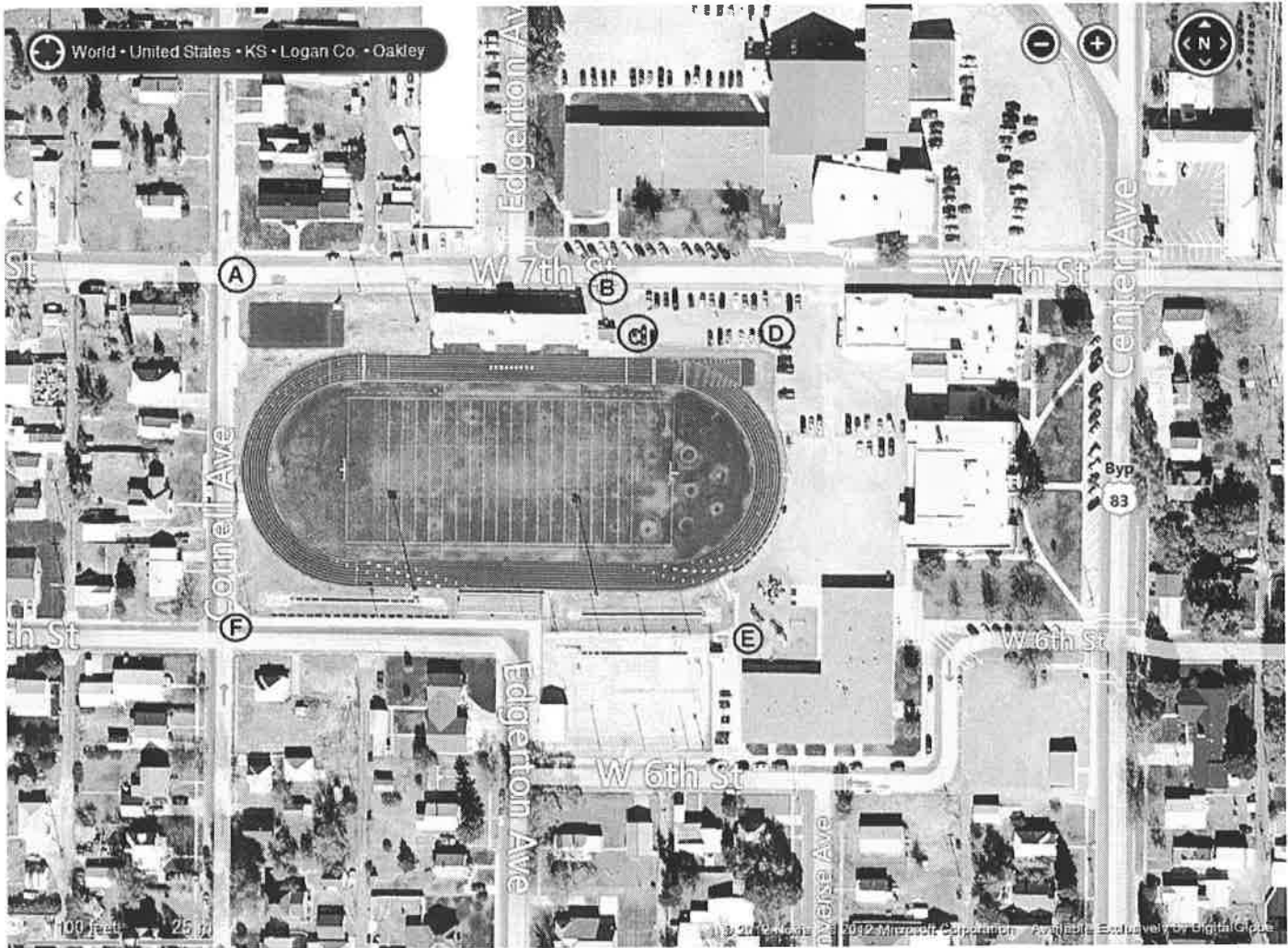
(complete this item at the request of the SHPO or FPO)

name U.S.D. 274 Oakley School District (Attn: Bill Steiner)
street & number 118 W. 7th Street Telephone 785-671-3241
city or town Oakley state KS Zip code 67748

Paperwork Reduction Act Statement: This information is being collected for applications to the National Register of Historic Places to nominate properties for listing or determine eligibility for listing, to list properties, and to amend existing listings. Response to this request is required to obtain a benefit in accordance with the National Historic Preservation Act, as amended (16 U.S.C.460 et seq.).

Estimated Burden Statement: Public reporting burden for this form is estimated to average 18 hours per response including time for reviewing instructions, gathering and maintaining data, and completing and reviewing the form. Direct comments regarding this burden estimate or any aspect of this form to the Office of Planning and Performance Management, U.S. Dept. of the Interior, 1849 C. Street, NW, Washington, DC.

Figure 1: Map/Site Plan (Bing.com)



Oakley High School Stadium
118 West 7th Street
Oakley, Logan County, KS
(Datum: WGS84)

Lat/Long Coordinates: A: 39.13228 -100.85711
B: 39.13223 -100.85567
C: 39.13207 -100.85557
D: 39.13206 -100.85499
E: 39.13119 -100.85513
F: 39.13125 -100.85710

Figure 2: Contextual Map (Bing.com)



Oakley High School Stadium
118 West 7th Street
Oakley, Logan County, KS
(Datum: WGS84)

Figure 3: Exterior Photo Views

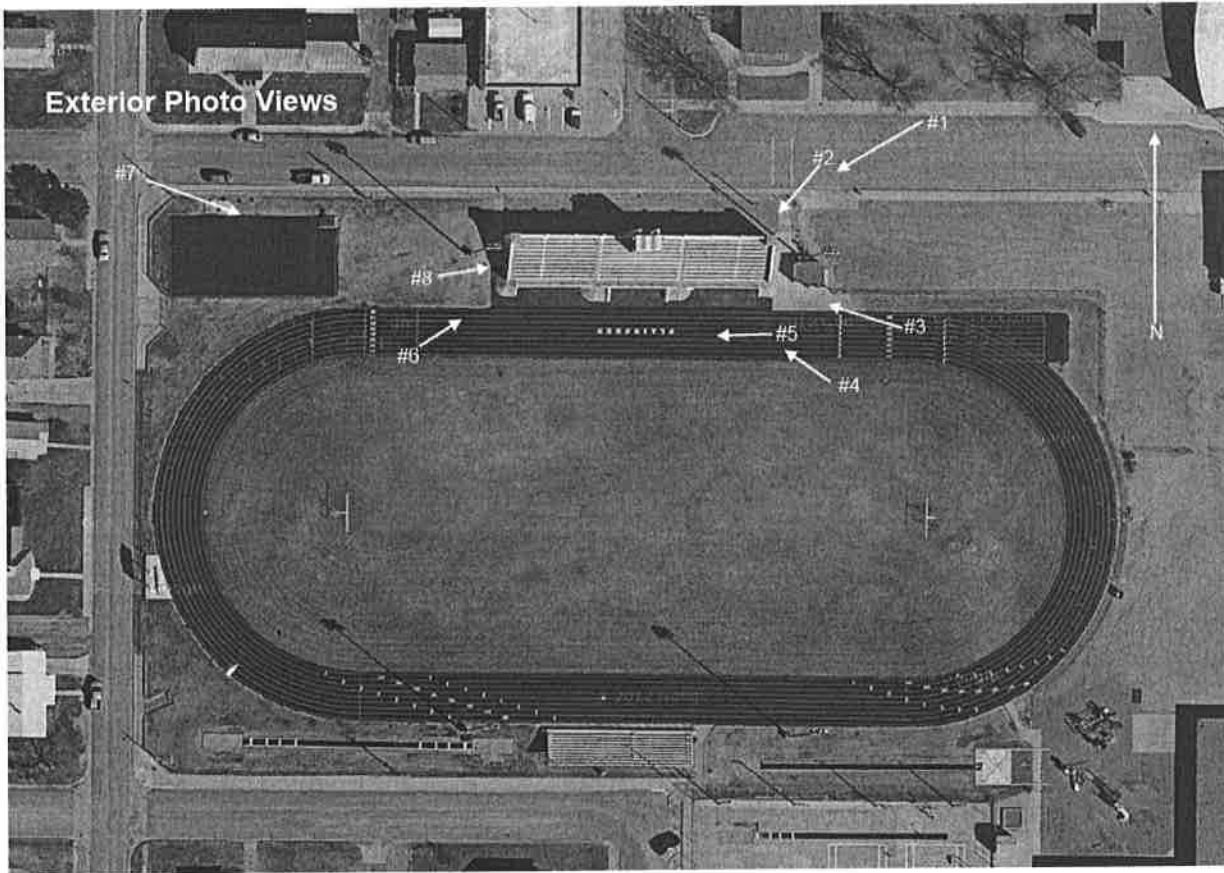
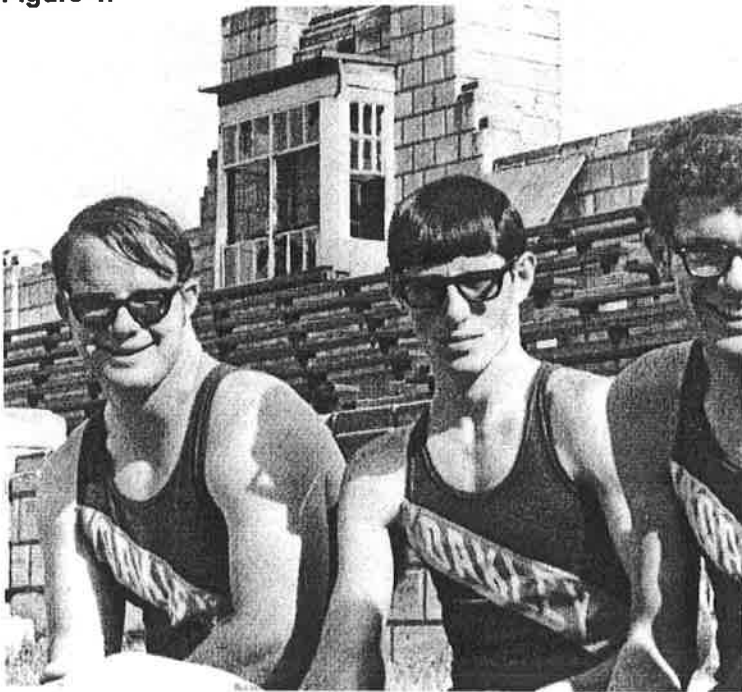


Figure 4:



This photo was taken by the school yearbook staff in the spring of 1970. It shows the press box as it appeared after the removal of the bell and the installation of the new press box.

Figure 5:



TRACK SQUAD

This yearbook photo shows the bell tower behind the 1949 track team.

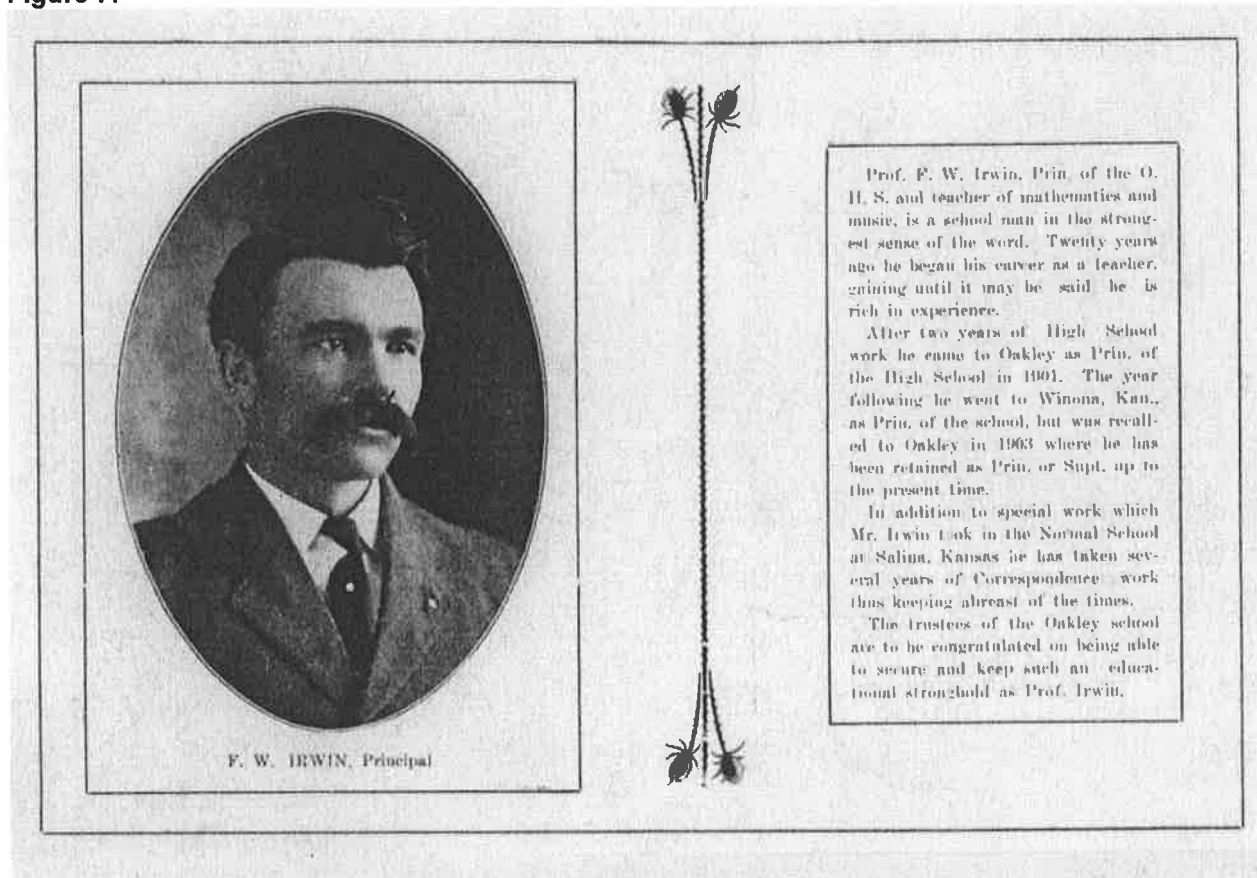
Figure 6:



FRONT ROW: Paul Warren, Mike Campbell, Mike Rummel, Ronnie Fischer, Tom Plummer, John Decker, Kim Ahrens. 2ND ROW: Terry Hockersmith, Jay Herl, Fred Wasse Miller, Dan Scott, Monte Beagley, James McDowall, Doug Pererson, Bob Geist, trainer. 3RD ROW: Asst. Coach Bill Davis, Jerry Wycoff, Terry Nickelson, Matt Dumler, Danny Robben, Russell Decker, David Garrett, Richard Lowenthal, Roy Lee, Coach Bob Bean. BACK ROW: Ray Funk, Larry Rudell, Burton Rose, Keith Ribordy, Warren Lewallen, Wade Park, Kevin Shaw, Wilmer Gilkerson.

This picture, taken by the yearbook staff in 1969, shows the press box after the bell removal and before the modern renovation.

Figure 7:



F. W. Irwin is shown here, along with a description of his contributions to the school district up to 1912, the year of *The Prairie Queen* school yearbook from which this photo is taken.



OAKLEY

INSMEN

WELCOME
TO OAKLEY HIGH SCHOOL
Gymnasium
NO
SMOKING
Tobacco, Alcohol, or
Drugs are permitted on
the premises.
Please respect
the property and
the people of Oakley High School.

TOBACCO FREE
GROUNDS
Oakley High School
Gymnasium
No tobacco, alcohol, or
drugs are permitted on
the premises.
Please respect
the property and
the people of Oakley High School.



OAKLEY



OHS

PLAINS

HOME OF THE
Plainsman



OHS

PLAINSMEN

OAKLEY





2402

OHS

AKLEY

PLAINSMEN



Clayco
800-333-5791

GIRLS

HOME OF
THE PLAINSMEN
WELCOME VISITORS









UNITED STATES DEPARTMENT OF THE INTERIOR
NATIONAL PARK SERVICE

NATIONAL REGISTER OF HISTORIC PLACES
EVALUATION/RETURN SHEET

REQUESTED ACTION: NOMINATION

PROPERTY NAME: Oakley High School Stadium

MULTIPLE NAME: New Deal-Era Resources of Kansas MPS

STATE & COUNTY: KANSAS, Logan

DATE RECEIVED: 2/22/13 DATE OF PENDING LIST: 3/21/13
DATE OF 16TH DAY: 4/05/13 DATE OF 45TH DAY: 4/10/13
DATE OF WEEKLY LIST:

REFERENCE NUMBER: 13000150

REASONS FOR REVIEW:

APPEAL: N DATA PROBLEM: N LANDSCAPE: N LESS THAN 50 YEARS: N
OTHER: N PDIL: N PERIOD: N PROGRAM UNAPPROVED: N
REQUEST: N SAMPLE: N SLR DRAFT: N NATIONAL: N

COMMENT WAIVER: N

ACCEPT RETURN REJECT 4.9.13 DATE

ABSTRACT/SUMMARY COMMENTS:

**Entered in
The National Register
of
Historic Places**

RECOM./CRITERIA _____

REVIEWER _____ DISCIPLINE _____

TELEPHONE _____ DATE _____

DOCUMENTATION see attached comments Y/N see attached SLR Y/N

If a nomination is returned to the nominating authority, the nomination is no longer under consideration by the NPS.

6425 SW 6th Avenue
Topeka, KS 66615



phone: 785-272-8681
fax: 785-272-8682
cultural_resources@kshs.org

Kansas Historical Society

Sam Brownback, Governor
Jennie Chinn, Executive Director

February 14, 2013

Carol Shull
National Register of Historic Places
National Park Service
1201 Eye Street, N. W.
8th Floor (MS 2280)
Washington, DC 20005



Dear Ms. Shull:

We are pleased to submit for your consideration the following National Register nominations (new submissions):

- Point of Rocks – Middle Spring Santa Fe Trail Historic District – Morton County, KS
- Harry Keith Barn – Graham County, KS
- Oakley High School Stadium – Logan County, KS

Please do not hesitate to contact me if you have any questions. I may be reached at 785-272-8681 ext. 216 or smartin@kshs.org.

Sincerely yours,

Sarah J. Martin
National Register Coordinator

Enclosures