



Waterbury Municipal Center Complex

Photo #10 of 15

Cass Gilbert National Register District

Waterbury, CT, *New Haven County*

City Hall (foreground) and Waterbury Bank Building

(City Trust)

Photo by Ann Smith, March, 1978

Negative on file with Connecticut Historical Commission

AUG 21 1978

^{DOE}
OCT 10 1978

PROPERTY OF THE NATIONAL REGISTER



Photo #2 of 15 *Waterbury Municipal Center Complex*
Case Gilbert National Register District
Waterbury, CT, *New Haven County, CT.*
Chase Building
Photo by Ann Smith, March, 1978
Negative on file with Connecticut Historical Commission

AUG 21 1978
DOE
OCT 10 1978

PROPERTY OF THE NATIONAL REGISTER



Waterbury Municipal Center DOE
Photo #3 *415* *Complex* OCT 10 1978
Cass Gilbert National Register District
Waterbury, CT, *New Haven County,* AUG 21 1978
Detail of central section, south elevation - Chase Building
Photo by Ann Smith, March, 1978
Negative on file with Connecticut Historical Commission

PROPERTY OF THE NATIONAL REGISTER



Waterbury Municipal Center Complex

Photo #4 of 15

AUG 21 1978

Cass Gilbert National Register District

Waterbury, CT, *New Haven County*

City Hall, detail, second and third story, north elevation

Photo by Ann Smith, March, 1978

Negative on file with Connecticut Historical Commission

OCT 10 1978

DOE

PROPERTY OF THE NATIONAL REGISTER



Photo #5815 *Waterbury Municipal Center Complex*
Cass Gilbert National Register District
Waterbury, CT, *New Haven County*
Part of Waterbury Bank (City Trust), Lincoln House,
Henry S. Chase Memorial Dispensary

AUG 21 1978

Photo by Ann Smith, March, 1978

Negative on file with Connecticut Historical Commission

¹⁰⁰⁸
OCT 10 1978

PROPERTY OF THE NATIONAL REGISTER



Photo #6 *Q15* *Waterbury Municipal Center Complex*
Cass Gilbert National Register District
Waterbury, CT, *New Haven County*
Henry S. Chase Memorial Dispensary
Photo by Ann Smith, March, 1978
Negative on file with Connecticut Historical Commission

AUG 21 1978

DOE
OCT 10 1978

PROPERTY OF THE NATIONAL REGISTER



Waterbury Municipal Center Complex

Photo # *115*

Cass Gilbert National Register District

Waterbury, CT, *New Haven County, CT.*

Lincoln House

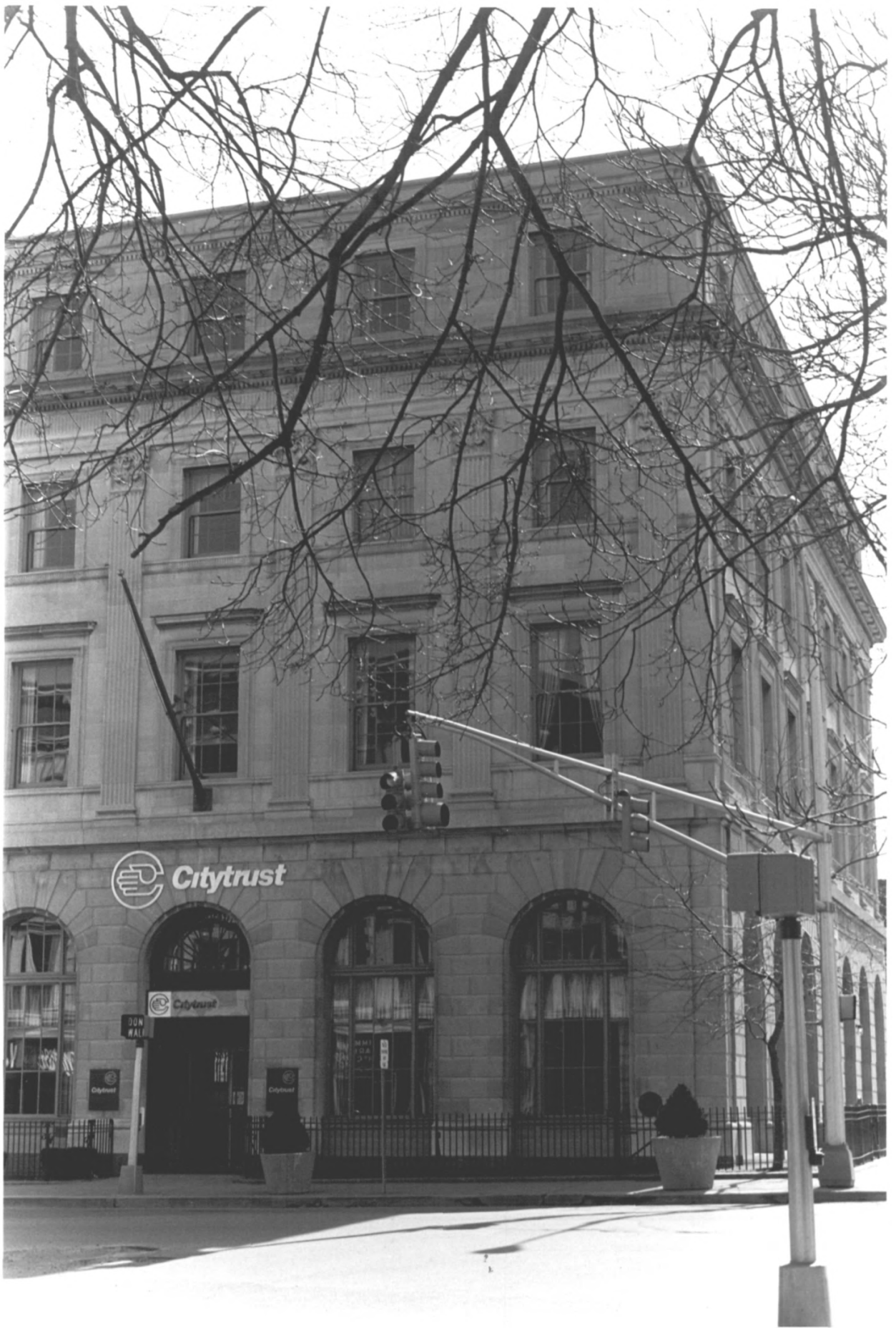
Photo by Ann Smith, March, 1978

Negative on file with Connecticut Historical Commission

DOE
OCT 10 1978

AUG 21 1978

PROPERTY OF THE NATIONAL REGISTER



CityTrust

 **CityTrust**

DON WALK

 **CityTrust**

 **CityTrust**

Waterbury Municipal Center Complex

Photo #8 of 15

Cass Gilbert National Register District

Waterbury, CT *New Haven County, CT.*

AUG 21 1978

Waterbury Bank (City Trust), west elevation

Photo by Ann Smith, March, 1978

Negative on file with Connecticut Historical Commission

see
OCT 10 1978

PROPERTY OF THE NATIONAL REGISTER



Waterbury Municipal Center Complex

Photo #9 ⁴/₁₅

Cass Gilbert National Register District AUG 21 1978

Waterbury, CT *New Haven County*

Waterbury Bank (City Trust), window detail

Photo by Ann Smith, March, 1978

Negative on file with Connecticut Historical Commission

^{DOE}
OCT 10 1978

PROPERTY OF THE NATIONAL REGISTER



Waterbury Municipal Center Complex

Photo #10 of 15

Cass Gilbert National Register District

Waterbury, CT, *New Haven County, CT.*

Waterbury Bank (City Trust), Power Station

Photo by Ann Smith, March, 1978

Negative on file with Connecticut Historical Commission

AUG 21 1978

DOE

OCT 10 1978

PROPERTY OF THE NATIONAL REGISTER



Waterbury Municipal Center Complex

Photo #11 of 15

Cass Gilbert National Register District

Waterbury, CT *New Haven County*

City Hall, Fire Station, east elevation

Photo by Ann Smith, March, 1978

Negative on file with Connecticut Historical Commission

AUG 21 1978

DOE

OCT 10 1978

PROPERTY OF THE NATIONAL REGISTER



ATION & SERVICES

BASEMENT
 HEATING & PLUMBING INSPECTOR →
 INSPECTORS BUILDING & ELECTRICAL →
 CREDIT →
 DEPARTMENT OF HEALTH & HUMAN SERVICES →
 SPECIAL SERVICE DIVISION →
 TOILET →

FIRST FLOOR
 TOWN CLERK →
 ARCHIVE →
 VITAL REGISTRAR →
 TAX COLLECTOR →
 POLICE DEPT →

SECOND FLOOR
 ALDERMAN CHAMBERS →

THIRD FLOOR
 ENGINEERING DEPT →
 CITY PLAN DEPT →

FOURTH FLOOR
 MAYOR'S OFFICE →
 LEGAL DEPT →
 CLERK →
 FISCAL →
 RECORDS →
 PERSONNEL →
 PUBLIC →

CIVIL PREPAREDNESS OFFICE →

CITY EMPLOYEES

HELP REPLENISH THE CITY'S FOOD BANK
 BY
 BRINGING CANNED AND NON-PERISHABLE FOOD
 TO THE
 CIVIL PREPAREDNESS OFFICE

MARCH 20 THRU MARCH 31, 1978
 SHOW YOUR CARE!



Waterbury Municipal Center Complex

Photo #12 *415*

Cass Gilbert National Register District

Waterbury, CT *New Haven County*

City Hall, interior, main stairway

Photo by Ann Smith, March, 1978

Negative on file with Connecticut Historical Commission

DOE

OCT 10 1978

AUG 21 1978

PROPERTY OF THE NATIONAL REGISTER



Waterbury Municipal Center Complex

Photo #13 of 15

AUG 21 1978

Cass Gilbert National Register District

Waterbury, CT *New Haven County, Ct.*

City Hall, interior detail of railing, main stairway

Photo by Ann Smith, March, 1978

Negative on file with Connecticut Historical Commission

²⁰⁸
OCT 10 1978

PROPERTY OF THE NATIONAL REGISTER



Waterbury Municipal Center Complex

DOE

OCT 10 1978

Photo #14 *of 15*

Cass Gilbert National Register District

Waterbury, CT *New Haven County*

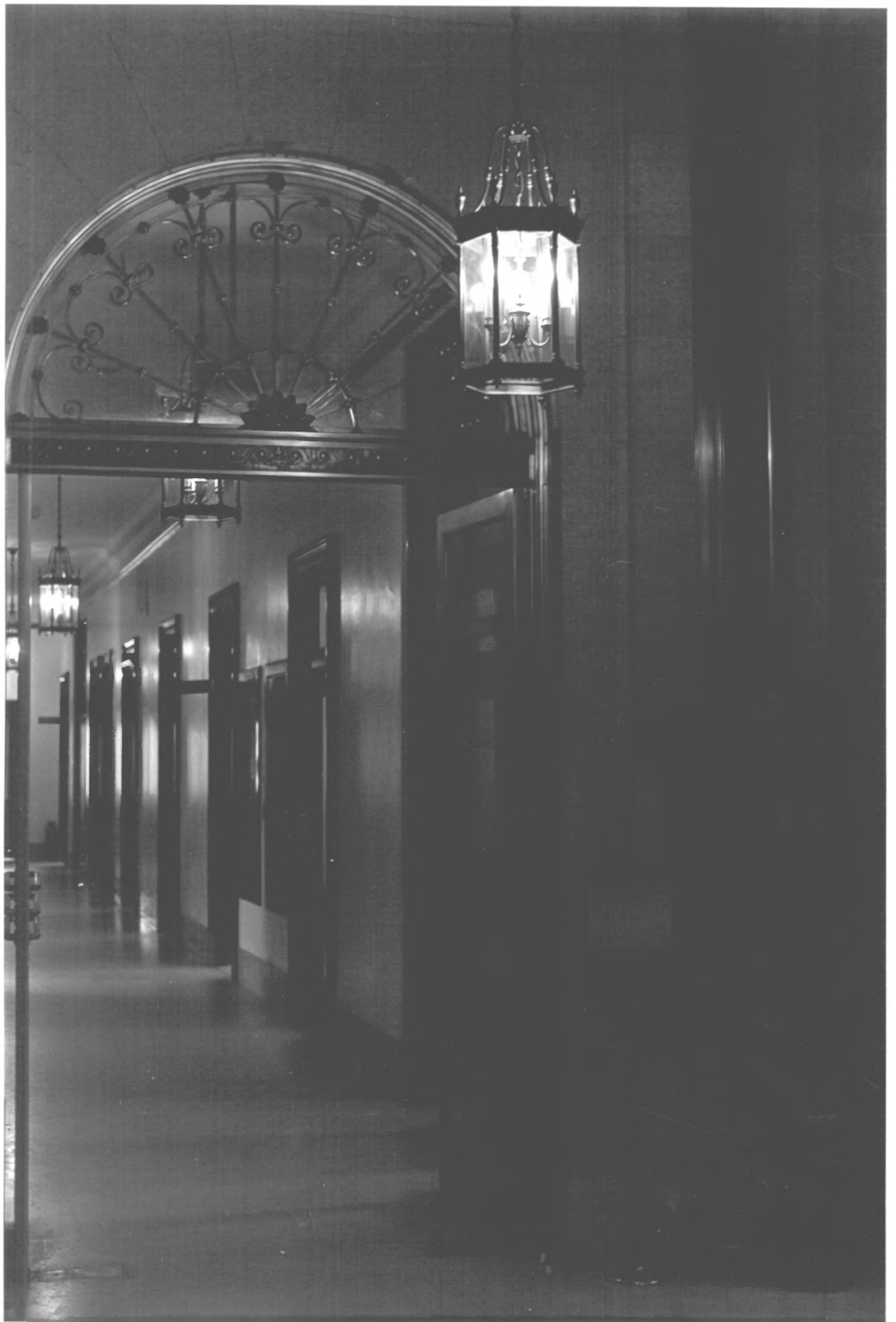
AUG 21 1978

City Hall, interior, corridor and balcony

Photo by Ann Smith, March, 1978

Negative on file with Connecticut Historical Commission

PROPERTY OF THE NATIONAL REGISTER



Waterbury Municipal Center Complex

Photo #15 of 15

^{PDC}
OCT 10 1978

Cass Gilbert National Register District

Waterbury, CT *New Haven County*

Chase Building, interior, west corridor on main floor

Photo by Ann Smith, March, 1978

Negative on file with Connecticut Historical Commission

AUG 21 1978

PROPERTY OF THE NATIONAL REGISTER