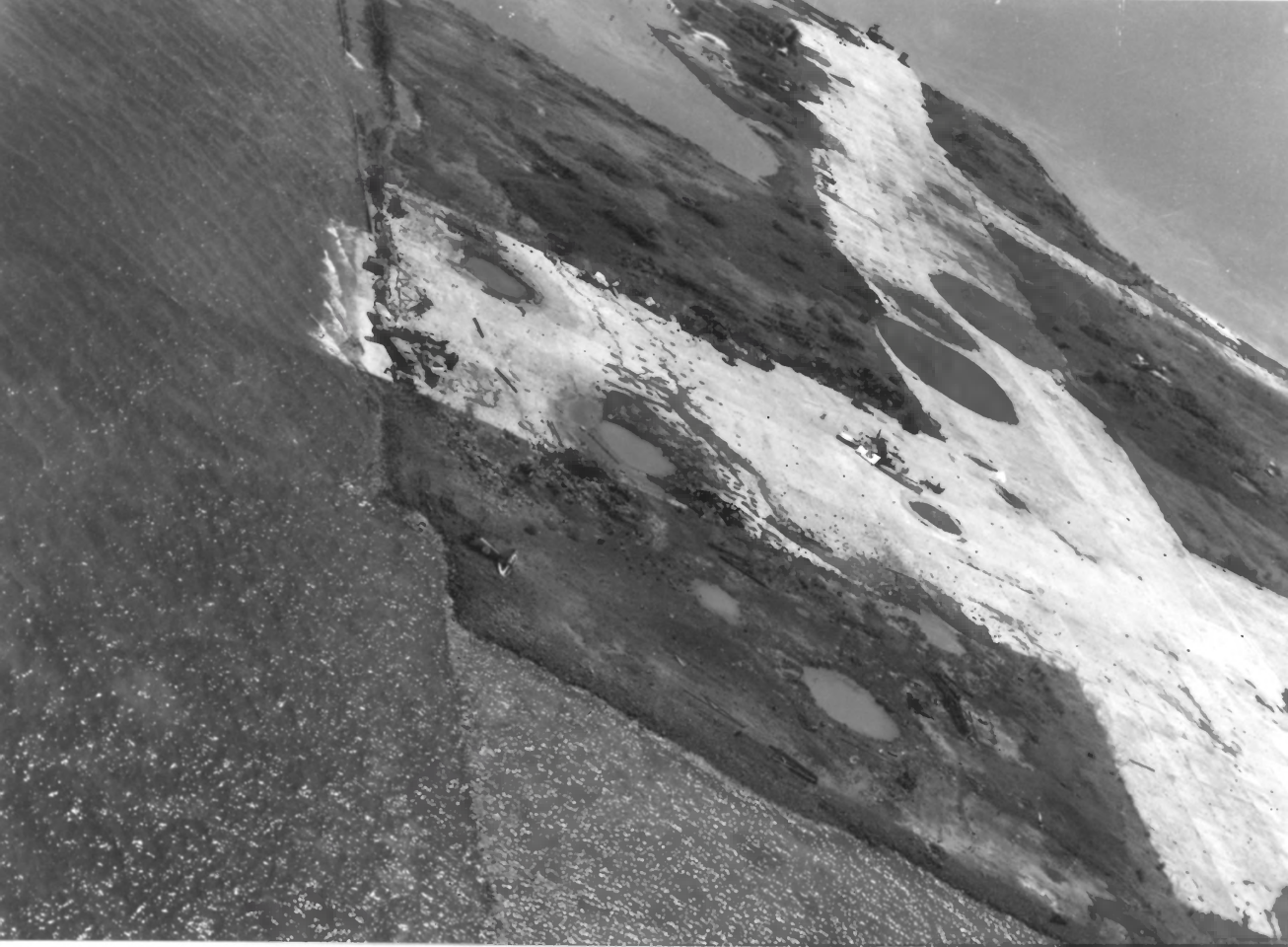


1. Truk Lagoon, February 4, 1944. A Marine Corps flying boat took this first photograph of the Japanese fleet in Truk Lagoon. Dublon Island is at lower left; Fefan Island is at lower right; and Eten airfield is in center. Two Japanese aircraft carriers are in the photo.



3. Seaplane-fighter plane base on south tip of Moen Island, Truk. Photograph taken on August 26, 1945. A resort hotel occupies part of the site today, but traces of the airfield are evident.

Courtesy, National Archives



5. Truk Lagoon from Moen Island. The thin white line of the coral reef and a small islet appear on the horizon.



6. Dublon Island, Truk. Most of the Japanese naval facilities were constructed on Dublon.

Photo by E.N. Thompson

October 1983



7. A beached vessel on the west coast of Moen Island. Local people claim this was a Japanese vessel beached in World War II.

Photo by E.N. Thompson