



UNION STATION

UNITED STATES DEPARTMENT OF THE INTERIOR
NATIONAL PARK SERVICE

NATIONAL REGISTER OF HISTORIC PLACES
PROPERTY PHOTOGRAPH FORM

(Type all entries - attach to or enclose with photograph)

STATE ALABAMA	
COUNTY MONTGOMERY	
FOR NPS USE ONLY	
ENTRY NUMBER	DATE
JUL 24 1973	

1. NAME

COMMON: **Union Railway Station**

AND/OR HISTORIC:

2. LOCATION

STREET AND NUMBER:

Water Street

CITY OR TOWN:

Montgomery

STATE:

Alabama

CODE

01

COUNTY:

Montgomery

CODE

001

3. PHOTO REFERENCE

PHOTO CREDIT: **Central Alabama Regional Planning & Development Commission**

DATE OF PHOTO: **October, 1972**

NEGATIVE FILED AT:

CARPDG, Montgomery, Alabama

4. IDENTIFICATION

DESCRIBE VIEW, DIRECTION, ETC.

facade



1 of 2

SEE INSTRUCTIONS



UNITED STATES DEPARTMENT OF THE INTERIOR
NATIONAL PARK SERVICE

NATIONAL REGISTER OF HISTORIC PLACES
PROPERTY PHOTOGRAPH FORM

(Type all entries - attach to or enclose with photograph)

STATE	
ALABAMA	
COUNTY	
MONTGOMERY	
FOR NPS USE ONLY	
ENTRY NUMBER	DATE
JUL 24	1973

1. NAME

COMMON: Union Railway Station

AND/OR HISTORIC:

2. LOCATION

STREET AND NUMBER:

Water Street

CITY OR TOWN:

Montgomery

STATE:

Alabama

CODE

01

COUNTY:

Montgomery

CODE

001

3. PHOTO REFERENCE

PHOTO CREDIT: Central Alabama Regional Planning & Development Commission

DATE OF PHOTO: October, 1972

NEGATIVE FILED AT:

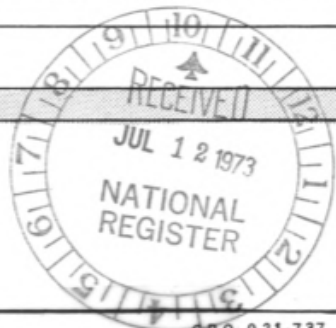
CARPDC, Montgomery, Alabama

4. IDENTIFICATION

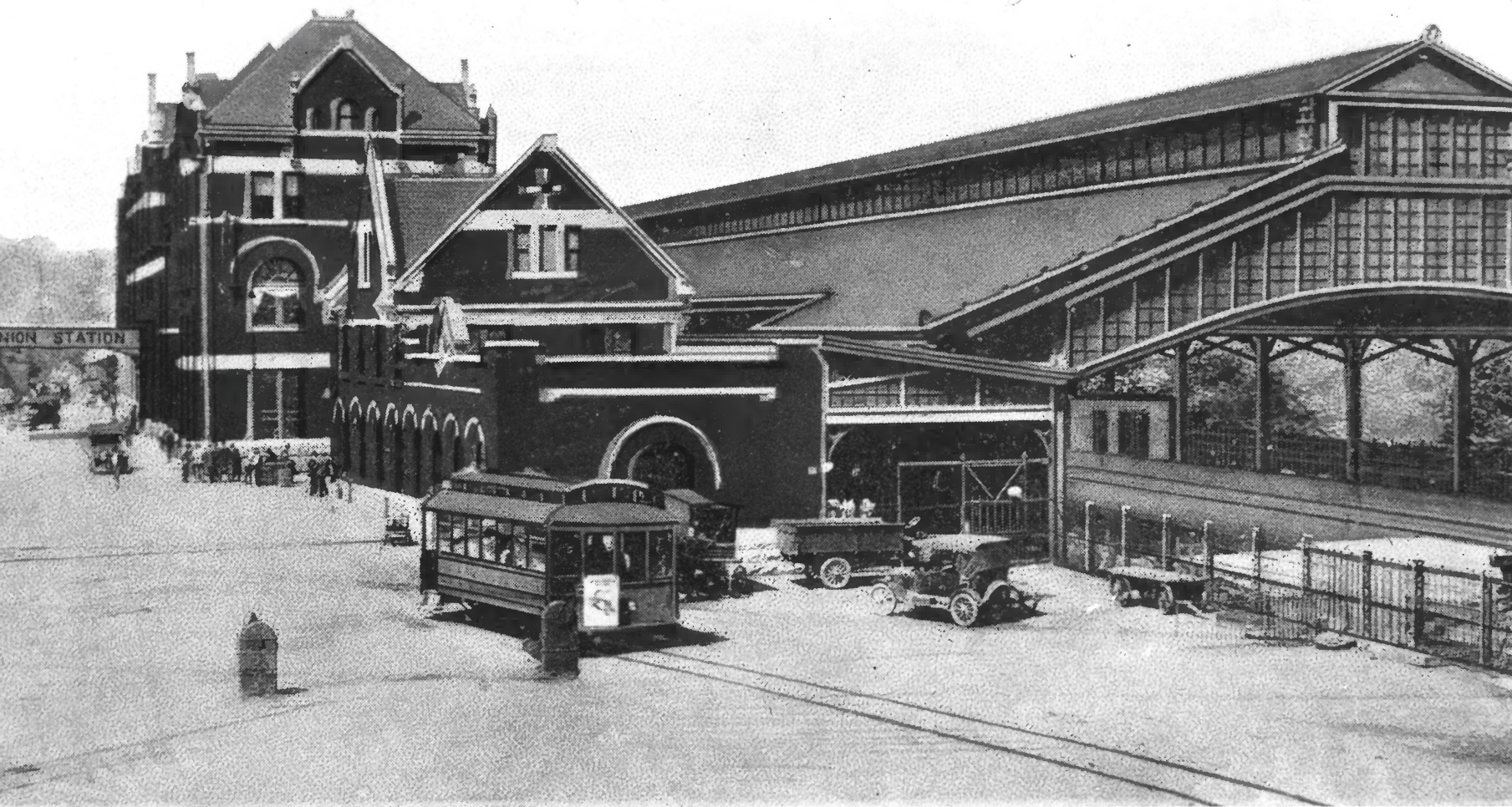
DESCRIBE VIEW, DIRECTION, ETC.

Main Entrance

2 of 2



SEE INSTRUCTIONS



UNION STATION, MONTGOMERY, ALA.

Montgomery Union Station, Montgomery, Alabama
NW side of Water Street, opposite Lee Street

c. 1925



Montgomery Union Station, Montgomery, Alabama
NW side of Water Street, opposite Lee Street

Photo: Jack Boucher
1970



Montgomery Union Station, Montgomery, Alabama
NW side of Water, opposite Lee Street

Photo: Jack Boucher
1974