



EAST MARTINSBURG

M-159

NOV 1 1979

308-310-312 E Martin St

by Tony Wrenn

August 1978

DEC 10 1980

555A



m EAST MARTINSBURG

M-159

NOV

1 1979

Moler Avenue School
(Ridenours' School)

by Tony Wrenn

August 1978

DEC 10 1980

9 5 8 8



EAST MARTINSBURG

M-159

400 block of E Moler Ave
(looking west from the Albert St
intersection-northern side)

by Don C Wood

June 1979

NOV 1 1979

NOTE: 415 E Moler Ave is the two-
story, white frame structure
to the right.



EAST MARTINSBURG

M-159

400 block of E Moler Ave
(looking west from the Albert St
intersection-southern side)

by Don C Wood

June 1979

NOV 1 1979

540B

DEC 10 1980



EAST MARTINSBURG

M-159

500 block of E Moler Ave
(looking east from the Kauffman
Avenue-northern side)

by Don C Wood

June 1979

NOV 1 1979

540B



EAST MARTINSBURG NOV 1 1979 M-159

700 block of E Moler Ave
(looking east from near Central
Ave intersection-Schopperts Road)
by Don C Wood June 1979

5408

DEC 10 1980



EAST MARTINSBURG

M-159

700 block of E Moler Ave
(looking east from the Central Ave
intersection-Schopperts Road)

by Don C Wood

June 1979

NOV 1 1979

NOTE: 700 E Moler Ave is the dark
house behind the tree; 704
is next, 706 and 708 are
partially obscured.

DEC 10 1980



70
EAST MARTINSBURG

M-159

NOV 1 1979

706 E Moler Avenue

by Tony Wrenn August 1978

8908



EAST MARTINSBURG

NOV M-159
1 1979

706 E Moler Avenue

by Tony Wrenn August 1978

8

0

0

0

0861 01 077

THIS PAPER MANUFACTURED BY KODAK



EAST MARTINSBURG

M-159

NOV 1 1979

708 E Moler Avenue

by Tony Wrenn

August 1978

NOTE: Outer bay windows with single
level demi-octagonal windows.



EAST MARTINSBURG

M-159

NOV 1 1979

710 E Moler Avenue

by Tony Wrenn

August 1978



NOTE: Storefront with false center gablet. Architecture leaves no doubt, through its design of intended use.

0861 01 330
DEC 10 1980

THIS PAPER
MANUFACTURED
BY KODAK

THIS PAPER
MANUFACTURED
BY KODAK

THIS PAPER
MANUFACTURED
BY KODAK

THIS PAPER
MANUFACTURED
BY KODAK



EAST MARTINSBURG

M-159

NOV 1 1979

803 E Moler Avenue

by Tony Wrenn

August 1978

9908

DEC 10 1980

803 Moler



8 EAST MARTINSBURG

M-159

NOV 1 1979

820 E Moler Avenue

by Tony Wrenn

August 1978

NOTE: Full complement of out-
buildings.

DEC 10 1980



M
EAST MARTINSBURG

M-159

NOV

1 1979

848 E Moler Avenue

by Tony Wrenn

August 1978

DEC 10 1980

9 5 8 8



EAST MARTINSBURG

M-159

NOV 1 1979
128 Pennsylvania Avenue

by Tony Wrenn

August 1978

8692



27
EAST MARTINSBURG

M-159

NOV 1 1979

224 Pennsylvania Avenue

by Tony Wrenn August 1978

769B



EAST MARTINSBURG

M-159

NOV 1 1979

315 Pennsylvania Avenue

by Tony Wrenn August 1978

7690



EAST MARTINSBURG

M-159

NOV 1 1979

515-517 N. Queen St

by Tony Wrenn

August 1978



DEC 10 1980

THIS PAPER
MANUFACTURED
BY KODAK

THIS PAPER
MANUFACTURED
BY KODAK

THIS PAPER
MANUFACTURED
BY KODAK

THIS PAPER
MANUFACTURED
BY KODAK

PAPER
TURED



EAST MARTINSBURG

M-159

NOV 1 1979

561-563 N Queen St

by Tony Wrenn

August 1978

0108

DEC 10 1980



and has
lding and
erality is
ople and
a assisted
highly es-



BUSINESS PLACE OF J. W. D. FIGURE

Ho Car

That m

L

Fresh

No. 2

EAST MARTINSBURG

M-159

NOV

1 1978

561-563 N Queen St

by Tony Wrenn

August 1978

0051

DEC 10 1980



EAST MARTINSBURG

M-159

NOV 1 1979

626 N Queen St

by Tony Wrenn

August 1978

0108

DEC 10 1980



EAST MARTINSBURG

M-159
NOV 1 1979

626 N Queen St

by Tony Wrenn

August 1978



NOTE: Stained glass in upper
sash of the bay windows.

DEC 10 1980

ER-
URED
OAK

THIS PAPER
MANUFACTURED
BY KODAK

THIS PA
MANUFAC
BY K

THIS PAPER
MANUFACTURED
BY KODAK

THIS PAPER
MANUFACTURED
BY KODAK



EAST MARTINSBURG

M-159

NOV
628-630 N Queen St 1 1979

by Tony Wrenn

August 1978

778B

DEC 10 1980



EAST MARTINSBURG M-159

642 N Queen St NOV 1 1979

by Tony Wrenn August 1978

NOTE: Patterned fish-scale shingle
of baywindow gable.

DEC 10 1980

7788



EAST MARTINSBURG

M-159

NOV 1 1979

642 N Queem St.

by Tony Wrenn

August 1978

NOTE: Intricately detailed entrance surround.

DEC 10 1980

0822



EAST MARTINSBURG

M-159

700 block of N Queen St

(looking south from near the 2nd
Street intersection-western side)

by Don C Wood

June 1979

NOV 1 1979

DEC 10 1980

540B



EAST MARTINSBURG

m-159

NOV 1 1970

715 N Queen Street

(Westphal Hose Co. #5)

by Tony Wrenn : August 1978

0522



EAST MARTINSBURG

M-159
NOV 1 1979

704 N Queen Street

by Tony Wrenn August 1978

7788

DEC 10 1980



EAST MARTINSBURG

M-159

NOV 1 1979

804-806 N Queen Street

by Tony Wrenn August 1978

7750



EAST MARTINSBURG

M-159

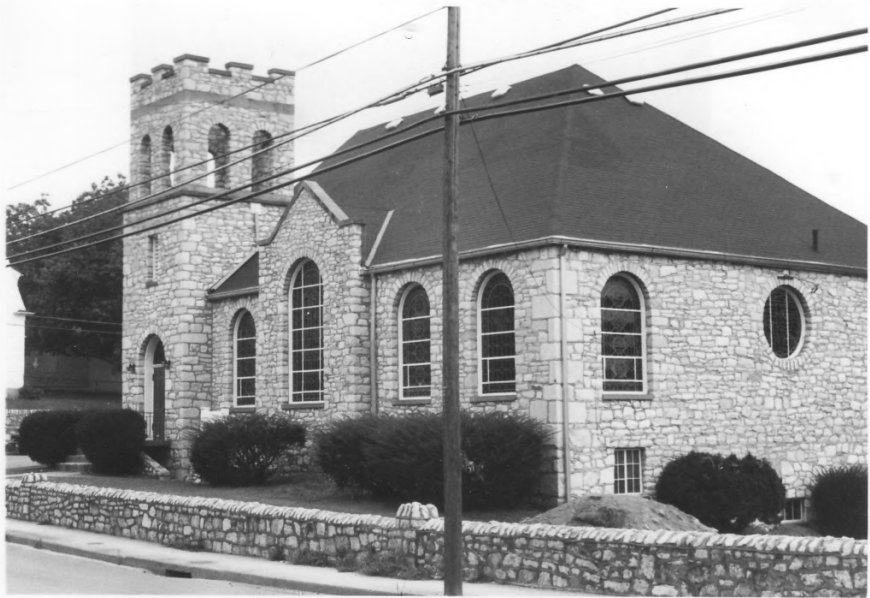
NOV 1 1979

808 N Queen Street

by Tony Wrenn August 1978

DEMOLISHED (JUNE 1979)

7758



EAST MARTINSBURG

NOV^{M-159} 1 1979

136 E Moler Ave

by Tony Wrenn August 1978

8808

DEC 10 1980



Welcome to the
ARNDT Insurance Agency

EAST MARTINSBURG

NOV^{M-159} 1 1979

822-824 N Queen Street

by Tony Wrenn August 1978

7750



8944

DEC 10 1980

EAST MARYINSBURG

HISTORIC DISTRICT outside

3rd ST

506 block
looking north

M 199

NOV 1980

DON WOOD



0966

EAST MARTINSBURG

HISTORIC DISTRICT

3rd St

600 blocks
west side

M159

NOV 1980

DON WOOD

DEC 10 1980



4378

EAST MARTINSBURG

HISTORIC DISTRICT west side

3rd ST.

700 block
looking south

M159

NOV 1980

DON WOOD



EAST MARTINSBURG

M-159

NOV 1 1979

719 Second St

by Tony Wrenn August 1978

7690



EAST MARTINSBURG

M-159

NOV 1 1979

715-717 Second St

by Tony Wrenn August 1978

7698

DEC 10 1980



EAST MARTINSBURG

M-159

700 and 800 block of S Queen St
(looking north from the Second St
intersection-western side)

by Don C Wood

June 1979

NOV 1 1979

NOTE: 804-806 N Queen St is
partially obscured behind
the trees in ctr; 814 is the
two-story brick beyond.



EAST MARTINSBURG

M-159

NOV
1 1979
South High Street

by Don C Wood

June 1979

NOTE: 214 S High St is the brick
structure to the right.

DEC 10 1980



EAST MARTINSBURG

M-159

100 block of S High St
(looking south from E Burke St)

by Don C Wood

June 1979

NOV 1 1979

5408

DEC 10 1980



EAST MARTINSBURG

M-159

200 block of S High St.
(looking north from mid-block;
eastern side)

by Don C Wood

June 1979

NOV 1 1979

5408

DEC 10 1980



EAST MARTINSBURG

M-159

200 block of S High St
(looking south from E King St
intersection-eastern side)

by Don C Wood

June 1979

NOV 1 1979

NOTE: 214 S High St is the last
structure on the far right
before the trees.



EAST MARTINSBURG

M-159

530 Hooge Street

(5th Ward School)

NOV 1 1979

by Tony Wrenn

August 1978

7748



Hooge

EAST MARTINSBURG

M-159

535 Hooge St NOV 1 1979

by Tony Wrenn

August 1978

7748



EAST MARTINSBURG

M-159

535 Hooge St NOV 1 1979

by Tony Wrenn

August 1978

NOTE: Double doors beneath a segmental arched transom; doors have heavily molded vertical panels. Stoop is large granite block.



EAST MARTINSBURG

M-159

633 Hooge St

NOV

1 1979

by Tony Wrenn

August 1978

769B

DEC 10 1980



EAST MARTINSBURG

M-159

100 and 200 block of E Liberty St
(looking west from mid-block;
the 200 section is nearest.)

by Don C Wood

June 1979

NOV 1 1979

NOTE: 134 E Liberty St is the
fourth house from the left;
138 is the third.



EAST MARTINSBURG

M-159

100 block of E Liberty St
(looking east; Hooge St intersec-
tion between the two white houses)
by Don C Wood

June 1979

NOV 1 1979

NOTE: 137 E Liberty St is the brick
structure on the far left;
201 is the third house from
the left.

10 1980



EAST MARTINSBURG M-159
100 block of E Liberty St
(looking west from near Hooge St
intersection-northern side)
by Don C Wood June 1979

NOV 1 1979

NOTE: 117-119 E Liberty St is the
brick structure in the center
115 E Liberty St is the white
house beyond.

DEC 10 1980



EAST MARTINSBURG

M-159

NOV

1 1979

116-118 E Liberty St

by Tony Wrenn

August 1978

7748



EAST MARTINSBURG

M-159

NOV 1 1979

117-119 E Liberty St

by Tony Wrenn

August 1978

7748

DEC 10 1980



EAST MARTINSBURG

M-159

NOV

1 1979

129 E Liberty St

by Tony Wrenn August 1978

7748

DEC 10 1980



EAST MARTINSBURG

M-159

129 E Liberty St

NOV 1 1979

by Tony Wrenn

August 1978

NOTE: Laminated brackets, applied ornaments of circles and arches, cable and other heavy moldings mark cornice.



EAST MARTINSBURG

M-159

137 E Liberty St

NOV 1 1979

by Tony Wrenn

August 1978

NOTE: Porch with square paired posts on blocks decorated with sawn brackets at eave and soffit. Sawn canopy course and balustrade feature shamrocks and hearts.



East Martinsburg

M-159

NOV 1 1979
134 E Liberty St

by Tony Wrenn

August 1978

7748

DEC 10 1980



212

EAST MARTINSBURG

NOV M-159
1 1979

212 E Liberty St

by Tony Wrenn

August 1978

7748



EAST MARTINSBURG

M-159

E Liberty St

NOV 1 1979

(looking west from near mid-200
block; Hoope St intersects at ctr)

by Don C Wood

June 1979

5

NOTE: 201 E Liberty St is the 1st
house on the right; 137 is
the 3rd; 129 is the 4th.

DEC 10 1980



EAST MARTINSBURG

M-159 -

NOV 1 1979
232-234 E Liberty St

by Tony Wrenn

August 1978

774B



EAST MARTINSBURG

M-159

NOV 1 1979

239 E Liberty St

by Tony Wrenn

August 1978

7748

DEC 10 1980



ST MARTINSBURG

M-159

NOV 1 1979

239 E Liberty St

y Tony Wrenn

August 1978

NOTE: Panel in porch gablet with
"1887" (verified) sawn into
it.



EAST MARTINSBURG

M-159

247 E Liberty St ^{RDV} 1979

by Tony Wrenn

August 1978

NOTE: Porch with sawn and laminated "S" brackets on consoles dropped bulbous pendants, heavily molded spandrel brackets and square posts

with neck and pedastal moldings. Entrance has transom and sidelights.



EAST MARTINSBURG

M-159

NOV 1 1979

138 E Liberty St

by Tony Wrenn

August 1978

7748

DEC 10 1980



EAST MARTINSBURG

M-159

NOV 1 1979

549 N Queen St

by Tony Wrenn

August 1978

8
1
0
8

0861 01 1980

THIS PAPER
MANUFACTURED
BY KODAK

THIS PAPER
MANUFACTURED
BY KODAK

THIS PAPER
MANUFACTURED
BY KODAK

THIS PAPER
MANUFACTURED
BY KODAK



EAST MARTINSBURG

NOV M-159
1 1979

247 E Liberty St

by Tony Wrenn

August 1978

DEC 10 1980

5538



EAST MARTINSBURG

M-159

200 block of E Liberty St

(looking east from near Hooge St;)
(bicyclists are near Third Street
intersection

by Don C Wood

June 1979

NOV 1 1979

540B

DEC 10 1980



EAST MARTINSBURG

M-159

NOV 1 1979

253-255 E Burke St

by Tony Wrenn

August, 78

NOTE: Stone basement level opening
at ground level; second level
is at street level.



EAST MARTINSBURG

M-159

300 block of E Burke St
(looking west from High St inter-
section-southern side)

by Don C Wood

June 1979

8335

NOV 1 1979

NOTE: 326-328 E Burke St is the
brick structure on the far
left, between the trees and
the telephone pole.



EAST MARTINSBURG

M-159

300 block of E Burke St
(looking west from High St)

by Don C Wood

June 1979

8 E E S

NOV 1 1979

NOTE: 329 E Burke is the first hse
on the right; 327 & 325 are
the next two, to the left.



EAST MARTINSBURG NOV M-158
1979

103 N Centre St

by Tony Wrenn August 1978

5478



4378

EAST MARTINSBURG
HISTORIC DISTRICT
701 HIGH ST.

DEC 10 1980

MISQ.

NOV 1980

DON WOOD



EAST MARTINSBURG

M-159

NOV

1 1979

117 N Centre St

by Tony Wrenn

August 1978

5478



EAST MARTINSBURG

NOV

M-159
1 1979

121 N Centre St

by Tony Wrenn

August 1978

5478



EAST MARTINSBURG

M-159

123 N Centre St NOV 1 1979

by Tony Wrenn

August 1978

5478



EAST MARTINSBURG

M-159

125 N Centre St

NOV 1 1979

by Tony Wrenn

August 1978

5478



EAST MARTINSBURG

M-159

400 block of N Centre St
(looking south from near the East
Liberty St intersection)

by Don C Wood

June 1979

NOV 1 1979

NOTE: 401-415 N Centre St is the
row of structures in the
center.

EAST MARTINSBURG

M-159

225 Eulalia St

NOV 1 1979

by Tony Wrenn

August 1978

5530

DEC 10 1980



EAST MARTINSBURG

M-159

301 Eulalia St

NOV 1 1979

by Tony Wrenn

August 1978

5538



EAST MARTINSBURG

M-159

301 Eulalia St

by Tony Wrenn.

August 1978

NOV 1 1979

NOTE: Brick nogging.

380



EAST MARTINSBURG

M-159

100 block of N High St
(looking north from near the
E Burke St intersection)

by Don C Wood

June 1979

EEES

NOV 1 1979

DEC 10 1980



EAST MARTINSBURG

M-159

201 N High St

by Tony Wrenn

August 1978

NOV 1 1979

7690

DEC 10 1980



EAST MARTINSBURG

M-159

300 block of N High St
(looking north from near mid-
block; E Race St crosses in ctr)
by Don C Wood

June 1979

EEES

NOV 1 1979

DEC 10 1980



100-2-1

EAST MARTINSBURG

M-159

500 block of N High St
(looking north from near the
Liberty St intersection-west side)
by Don C Wood

June 1979

NOV 1 1979

NOTE: 313 E Liberty St is the
brick structure partially
obscured on the far left.

DEC 10 1980