



United States Department of the Interior

NATIONAL PARK SERVICE
1849 C Street, N.W.
Washington, D.C. 20240

The attached property, Milo Academy Bridge in Douglas County, OREGON, reference number 79002055, and part of the Oregon Covered Bridges Thematic Resource, was listed in the National Register of Historic Places by the Keeper of the National Register on 11/29/1979, as evidenced by the FEDERAL REGISTER/WEEKLY LIST Vol. 45 number 54, notice of Tuesday, March 18, 1980, page 17474. The attached nomination form is a copy of the original documentation provided to the Keeper at the time of listing.

Richard for the Keeper
R.P.R. [Signature]
Keeper of the National Register of Historic Places

2-2-2010
Date

THEMATIC GROUP NOMINATION
OREGON COVERED BRIDGES

Bridge Name and Number Milo Academy Bridge, Index No. 8

County Douglas

Stream or River South Umpqua River

Location Milo Academy Road, off Highway 227, ca. 7 miles SE of Days Creek

NW $\frac{1}{4}$ SW $\frac{1}{4}$ Sec. 26, T.30S., R.3W., W.M.

Zone 10 E496940 N4753440 Days Creek Quadrangle

Acreeage and Boundary Description Full width of road right-of-way
for the distance between abutments and ten feet additional
at either end, containing in all approximately 7200 square feet.

Present Owner Milo Academy

Seventh Day Adventist Church

Milo, OR 97455

Date of Construction 1962

Description of Bridge

Length of span	100 feet
Truss type	Steel truss
Cladding	Vertical boards, vertical side walls
Roofing	Metal-clad gable roof
Decking	

Other salient features Formally-placed rectangular side openings. Concrete piers. Rectangular portal arches.

The bridge is a replacement of a covered wooden structure erected at this location in 1920. The steel span constructed in 1962 was housed in response to requests from local residents to recreate the effect of the original. Initially named Perdue, the nearby community of Milo was settled in the 1880s. Notwithstanding its steel construction and later date, the bridge is included in the Thematic Group nomination because it is listed in the World Guide. Three others in the group were built in the 1960s.

Legal description is included in the appropriate County Road Department right-of-way files and County Deed Records.

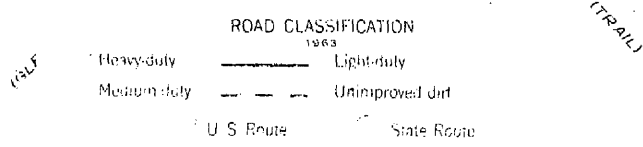
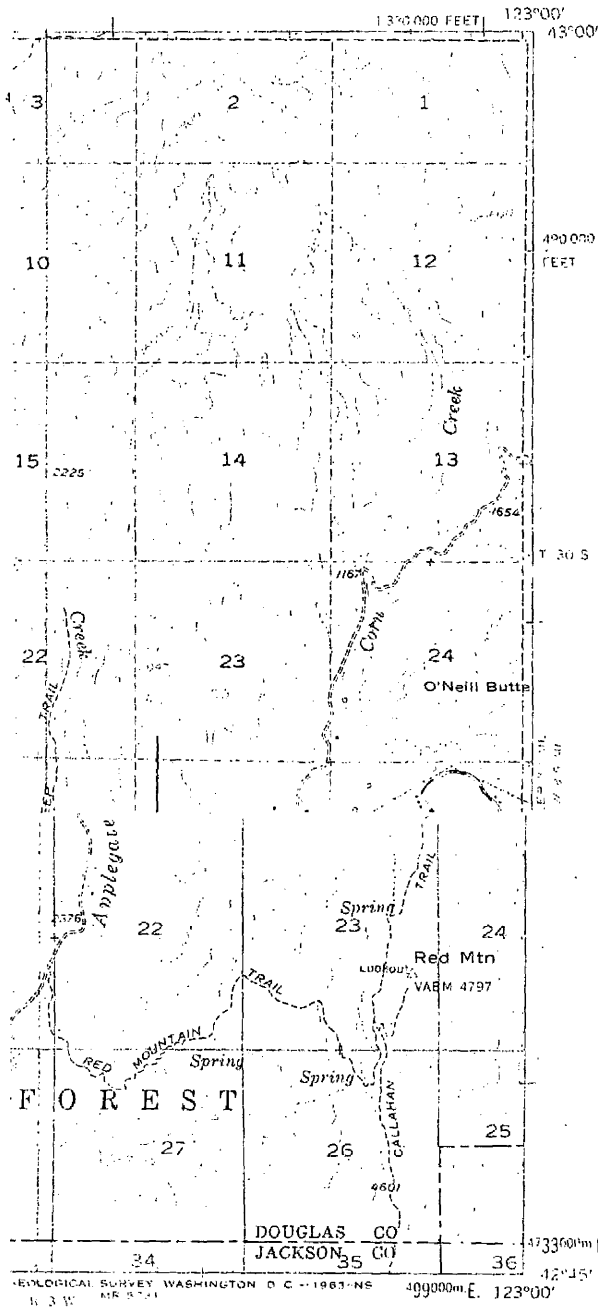
Information based on following sources: Statewide Inventory Form prepared by Stephen Dow Beckham, 1976. Typescript on Oregon Covered Bridges by Nick and Bill Cockrell, 1977.

Bridge Index No. 8
Milo Academy Covered Bridge
Vicinity of Milo
Douglas County, Oregon
South Elevation

Nick and Bill Cockrell Photo, 1976
751 Piedmont NW
Salem, OR 97304



DAYS CREEK QUADRANGLE
OREGON
15 MINUTE SERIES (TOPOGRAPHIC)



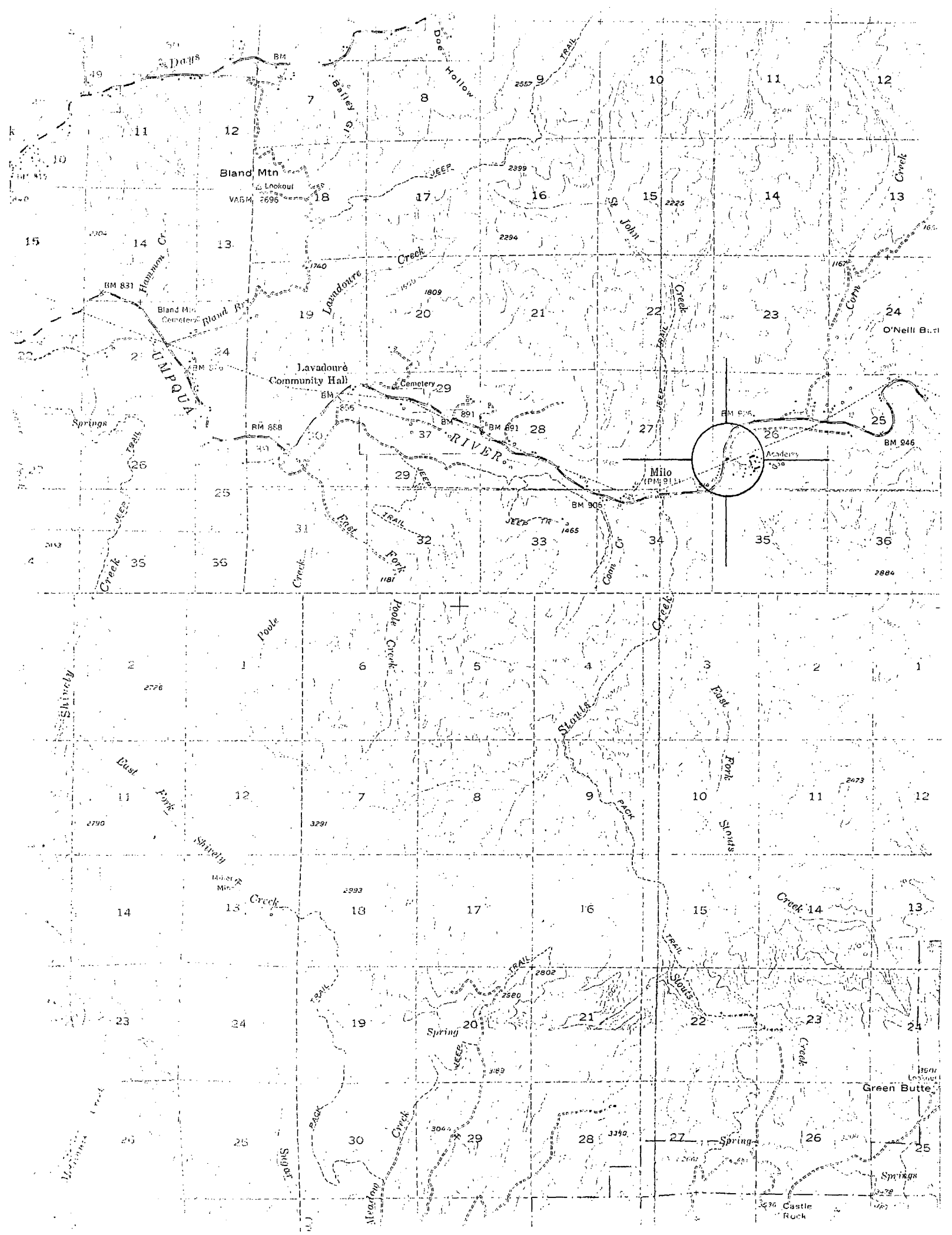
DAYS CREEK, OREG.

N4245...W12300/15

1954

MILO ACADEMY COVERED BRIDGE # 8

10/496940/4753440



Milo Academy Bridge
Stream: South Umpqua River
Built: 1962
World Guide No.: 37-10-10

T30 S: 1
Truss: Steel
Length: 100 feet

#8

The bridge at the Seven Day Adventist Academy near Milo is an one-of-a-kind in Oregon covered bridge history. The covering certainly is not a structural necessity, but fills an aesthetic need, as it is Oregon's only steel bridge housed in wood. Since 1920 residents had a covered bridge serving the academy across the South Umpqua River. When the wooden covered bridge was replaced with a steel span, the community felt it had lost a part of its identity. The steel structure was then modified to include the wooden housing, and today, the white covered bridge stands as a reminder to the residents of their previous covered bridge. The bridge is privately owned and maintained by the Seventh Day Adventist Church.

The area was settled prior to the 1880s, and the post office was established in 1884. Originally known as Perdue, the name was changed to Milo in 1923 when a community member suggested the name of the birth place of her husband, who was born in Milo, Maine.

A battle presently is boiling over the proposed dam at Day's Creek, which when completed would force backwater upstream inundating the 300-student academy and the covered bridge. Residents have suggested that the Corp of Engineers relocate the dam several miles upstream in the Umpqua National Forest, but a spokesman from the Corp of Engineers said that the Day's Creek location offers more benefits with the fewest drawbacks of the 95 different locations investigated. As one resident stated: "It's a shame when physical things like dams become more important than nature and human life.

To get there: At Canyonville, take Highway 227 east past Days Creek, continue approximately seven more miles to the bridge

Caption (exterior)

The Milo bridge is daylighted by four windows on each side of the structure. The siding consists of vertical boards, however, the roof is metal. The bridge is supported by concrete piers.

Caption (interior)

The bridge housing is not a material necessity, as the truss arrangement is a steel design. The wooden housing is supported by a metal frame work, having no relationship to the bridge engineering.

Covered Bridge Inventory

#1 8

Name: Milo Academy Covered Bridge
Swerth Day Adventist Secondary Boarding School
Est. 1955

Location: Hwy. 227

Nearest Town: Tillamook

Ownership: Milo Academy (private)

Road and Stream: South Umqua River

Dimensions: 100' long - approx. 20' wide

Type - Not Home

Year Built and Builder: 1962

Existing Setting:

Travelled by car - road to academy and church

Hills in the distance to the east

Trees along river

To west Hwy. 227 - ridge on other side of river

Description of Bridge:

Steel + concrete - squared portal - windows with inset

ledges - 4 each side

Condition:

Status:

Historical Significance:

Other covered Bridges in the County:

Bibliography

Contacts