

NATIONAL REGISTER OF HISTORIC PLACES REGISTRATION FORM

This form is for use in nominating or requesting determinations of eligibility for individual properties or districts. See instructions in "Guidelines for Completing National Register Forms" (National Register Bulletin 16). Complete each item by marking "x" in the appropriate box or by entering the requested information. If an item does not apply to the property being documented, enter "N/A" for "not applicable." For functions, styles, materials, and areas of significance, enter only the categories and subcategories listed in the instructions. For additional space use continuation sheets (Form 10-900a). Type all entries.

1. Name of Property

historic name Veal School
other names/site number N/A

2. Location

street & number 2753 Old Columbus Road
city, town Roopville (X) vicinity of
county Carroll code GA 045
state Georgia code GA zip code 30170

() not for publication

3. Classification

Ownership of Property:

- private
- public-local
- public-state
- public-federal

Category of Property:

- building(s)
- district
- site
- structure
- object

Number of Resources within Property:

Contributing

Noncontributing

buildings	1	0
sites	0	0
structures	0	0
objects	0	0
total	1	0

Contributing resources previously listed in the National Register: N/A

Name of previous listing: N/A

Name of related multiple property listing: N/A

4. State/Federal Agency Certification

As the designated authority under the National Historic Preservation Act of 1966, as amended, I hereby certify that this nomination meets the documentation standards for registering properties in the National Register of Historic Places and meets the procedural and professional requirements set forth in 36 CFR Part 60. In my opinion, the property meets the National Register criteria. () See continuation sheet.

W. Ray Luce
Signature of certifying official

Oct. 31, 2005
Date

for W. Ray Luce
Historic Preservation Division Director
Deputy State Historic Preservation Officer

In my opinion, the property () meets () does not meet the National Register criteria. () See continuation sheet.

Signature of commenting or other official

Date

State or Federal agency or bureau

5. National Park Service Certification

I, hereby, certify that this property is:

entered in the National Register

Elmer H. Beall 12/22/05

determined eligible for the National Register

determined not eligible for the National Register

removed from the National Register

other, explain:

see continuation sheet

[Signature]
Keeper of the National Register Date

6. Function or Use

Historic Functions:

EDUCATION/SCHOOL

Current Functions:

SOCIAL/CLUBHOUSE

7. Description

Architectural Classification:

NO STYLE

Materials:

foundation	Brick
walls	Wood/Shingle
roof	Metal/Tin
other	N/A

Description of present and historic physical appearance:

Veal School (photograph 1) is located in a rural area of southwest Carroll County in west central Georgia. The building, which served the surrounding white community, was constructed in 1900 and significantly expanded and altered in 1929.

The one-story building is covered with painted cedar shingles (photograph 3) and has a standing-seam tin hipped roof (photograph 1), which was installed in 1997 during restoration of the building. The building rests on a brick pier foundation (photograph 2). Doors are paneled with six lights in the upper portions and multi-light transoms (photograph 5). Windows are six-over-six double-hung-sash, some of which appear in groups of five and two (photographs 4 and 6). There are two brick interior chimneys (photograph 6). The east (front) façade features two recessed double-door entrances (photographs 1 and 12), one leading into a hallway between classrooms and the other leading directly into the auditorium. Another recessed double-door entrance is located on the south façade of the building (photograph 6).

The interior includes four classrooms in the south end of the building and an auditorium in the north end of the building. The classrooms are arranged around two cross-halls (photograph 10). The classrooms, which open onto the north-south hall, have unpainted wood plank floors, painted wood plank ceilings, and painted flushboard walls (photographs 7 and 9). Door and window surrounds are simple (photographs 7 and 9). Doors are paneled and feature three-light transoms that tilt for ventilation. Historic blackboards exist in two of the classrooms (photograph 7). Restrooms were added in the hallway between the northwest and southwest classrooms in 2000.

The auditorium (photograph 11), which is connected to the classroom area by the north-south hall,

National Register of Historic Places **Continuation Sheet**

Section 7--Description

has an unpainted wood plank floor and ceiling, and unpainted flushboard walls. Door and window surrounds are simple. An elevated stage is located at the western end of the auditorium and is reached by wooden steps. A dressing room is located on each side of the stage. Seating in the auditorium is not original.

The school had pot belly wood heaters, a water well, and two privies behind the school (no longer extant). The school building is set back from the road and has small grass front lawn. A large parking lot for the neighboring church separates the school from the road. The school is surrounded on three sides by a small grass lawn and wooded areas with large mature trees (photographs 1 and 12).

8. Statement of Significance

Certifying official has considered the significance of this property in relation to other properties:

nationally statewide locally

Applicable National Register Criteria:

A B C D

Criteria Considerations (Exceptions): N/A

A B C D E F G

Areas of Significance (enter categories from instructions):

Architecture
Education

Period of Significance:

1900-1949

Significant Dates:

1900-Construction date of original school
1929-School building significantly altered to its present configuration
1949-Carroll County schools consolidated, Veal School closed

Significant Person(s):

N/A

Cultural Affiliation:

N/A

Architect(s)/Builder(s):

N/A

National Register of Historic Places **Continuation Sheet**

Section 8--Statement of Significance

Statement of significance (areas of significance)

Veal School was constructed in 1900 and significantly enlarged and altered in 1929. It served the white children in the rural Carroll County community of Veal in west central Georgia. Due to public school legislation passed in the early 20th century and nationwide studies on education, school districts in Georgia began a period of consolidation to improve educational standards in the early to mid-20th century. The Veal School is a good local example of a small consolidated school in a rural area of the state.

Veal School is significant in the area of architecture as a good and intact example of a school building that evolved over time from a one-room rural public school to a small consolidated public school with four classrooms and an auditorium. According to Public Schools in Georgia, 1868-1971, a statewide context on public school building types, a consolidated public school is one that was centrally located within the school district and might start out as a smaller school with the capacity for expansion. A consolidated public school required several classrooms, to accommodate a graded school system, and additional facilities such as cloak rooms, physical education facilities, a library, an auditorium, administrative offices, heating plant facilities, and bathrooms. Classrooms were oriented along single- or double-loaded corridors. Ribbon windows were common to allow for proper lighting in the classrooms.

Veal School is also significant in the area of education for its function as the educational facility for the white community in Veal and the typical activities that occurred there during the historic period. The building served as a public school from 1900 to 1949. It was the first school in Carroll County to provide school lunches, and utilized its own Canning Club to do so. The building was significantly enlarged and altered in 1929 to bring it to its present appearance during a time of aggressive school consolidation in the state of Georgia.

National Register Criteria

Veal School is eligible for listing in the National Register of Historic Places under Criterion A in the area of education for the typical activities that occurred as the school for the white community in the Veal community during the historic period. It also represents two major developments in public education in Georgia during the first half of the 20th century: consolidation of small schools into a central facility and the expansion and upgrading of public school facilities. It is also eligible for listing under Criterion C in the area of architecture as a good and intact example of an early 20th century educational building that evolved over time from a one-room school to a four-room school with an auditorium.

Criteria Considerations (if applicable)

N/A

National Register of Historic Places **Continuation Sheet**

Section 8--Statement of Significance

Period of significance (justification)

The period of significance for Veal School begins in 1900, the construction date of the original one-room schoolhouse, and ends in 1949, the year in which the school was closed due to consolidation. The historic period includes the time in which the one-room building was expanded and altered to its current appearance.

Contributing/Noncontributing Resources (explanation, if necessary)

Veal School is the one contributing resource on the nominated property. There are no noncontributing resources on the nominated property.

Developmental history/historic context (if appropriate)

****NOTE: The following history was compiled by Lynne S. Miller, AICP, Preservation Planner, Chattahoochee-Flint Regional Development Center, December, 2004. On file at the Historic Preservation Division, Georgia Department of Natural Resources, Atlanta, Georgia.**

Created in 1826 from territory acquired by the Treaty of Indian Springs (1825), Carroll County's settlement represents Georgia's westward expansion. The state encouraged pioneer settlement through a system of land lotteries, distributing property to farmers seeking inexpensive land. The county's true pioneer era came to a close by 1830, lasting only four or five years.

Permanent settlement of Carroll County began about 1830, initiating a period of early settlement that lasted until about 1860. Communities and towns developed throughout the county including Carrollton, Villa Rica, and Bowdon. Numerous churches and post offices were established, representing smaller communities in the area. During this period, the discovery of gold led to mining, particularly around Villa Rica, and the presence of Snake Creek promoted the development of textile mills and other factories southeast of Carrollton. For the most part, however, Carroll County's economy between 1830 and 1860 was one of subsistence agriculture. In 1860, fewer than ten large planters and slaveholders lived in the county.

In 1899 citizens of the community met to organize a school. They named the town (and their new school) in hopes of obtaining a post office. The community of Veal was settled in southwest Carroll County, about 20 miles southwest of Carrollton, at the foot of Blackjack Mountain. John Monroe Veal and his family moved to this area from Norfolk, Virginia in 1849. Mr. Veal purchased his land by paying \$1,849 by hand to Zadock Bonner on Bonner Gold Mine Road in nearby Roopville (Laurel Hill). Mr. Veal died in 1885, at the age of 96. He had 13 children. It is possible that the community was named for him before 1899. It is also possible the community and school were named after Benjamin Jackson Veal, a local doctor who was tending typhoid patients in Veal when he died of typhoid in 1899.

The community's first schools were conducted in three private homes. Ethel Tumlin was Veal

National Register of Historic Places **Continuation Sheet**

Section 8--Statement of Significance

School's first teacher; she had 20 students. The school's second and third teachers were Will Chambers and Mamie Morris.

In 1900 several men in the community met to plan the first schoolhouse. Three brothers, Lee, Allen and Billy McLendon, who moved to the community in 1899 and opened a sawmill, agreed to donate logs and their services to anyone else willing to donate logs for the school. Thirteen men donated logs and other materials for the one-room school, including the three McLendon brothers. The school was constructed on the site of the present day school. As the community grew between 1900 and 1915, three rooms were added to the school. A path through the woods behind the school led to the sawmill.

In 1918 the Carroll County Board of Education received a report on the county's 88 public schools. The Veal School was described in this report:

Location: On lot 246, near center of district, three miles to Belleview, two and one-half miles to Stony Point.

Grounds: Area, four acres; titles in trustees (conditional); lot unimproved and hemmed in by unsanitary surroundings; small playgrounds; no school gardens, two toilets in fair condition.

Building: Value, \$2,000; four classrooms, no cloakrooms, insufficiently lighted,; ceiled; unpainted; unfinished, but in good condition.

Equipment: Home-made desks; no teachers' desks; poor blackboards; small map of state only; no globe; not charts; no pictures; no reference dictionaries; no library.

Organization: Three teachers; 6 months school year; nine grades; average attendance for the last three years, 90 pupils.

Maintenance: From County Board \$630.

In 1918 the average spent per Georgia schoolchild was \$11 per child per year, ranking Georgia 45th of the 48 states in amount spent per child. As a direct consequence of the *1918 Report*, the Carroll County Board of Education reduced its number of school districts from 88 to 44. The Veal School was retained as School District No. 4.

In 1929 the building underwent major renovations. An auditorium was added to the building, halls were constructed between the classrooms, and windows and doors were reconfigured. The building's siding was updated from wood planks to shingles at this time also. The construction contractor for this renovation was listed as Mr. Sewell of Villa Rica, Georgia.

In 1938 the Veal community included two stores, a gristmill, blacksmith shop, the sawmill, two churches and the Veal School. The school taught 10 grades (7 grades in its later years). Classes

National Register of Historic Places **Continuation Sheet**

Section 8--Statement of Significance

were conducted during the summertime. Veal students were excused from class to attend summer revivals at nearby Veal Baptist Church.

Veal was the first school in the county to provide school lunches, which cost 5 cents. A canning club was established at the school c. 1918. Menus consisted of fresh produce, canned produce, peanut butter and jelly sandwiches, or peanut butter and honey sandwiches. Cafeteria workers were paid.

In 1918, a Dr. J. J. Nutt graduated from Atlanta Medical School and moved to Veal, where he practiced medicine for the next 50 years. When the Veal School was closed in 1949, Dr. Nutt organized the Veal Community Club, whose members continue to meet in the former school building. Dr. Nutt died in 1970. He and his wife Margaret Summerlin Nutt are buried in Veal.

Mr. Comer Yates was a student (8th and 9th grades), then a teacher, and then the principal of the school during the 1940's. In 2001, at the age of 91, Mr. Yates reported: "I walked or rode horse and buggy to school. If it were bad weather I would put the mule in a stable located about 500 yards from the school.... All the rooms had a potbelly stove for which someone had to cut wood. There was no inside plumbing. There were two privies outside on opposite sides of the building.... There was no mail delivery at the school... There was a well on the school grounds for drinking water." Mr. Yates later became superintendent of schools for the Carroll County Board of Education. In addition to Mr. Comer Yates, notable graduates of the Veal School included Jimmy West, who became Mayor of Gainesville. Sports commentator Keith Jackson also attended this school; it was the first school he attended.

During World War II "the school was busy teaching and trying to make the students understand why we were in war," according Ruth Perdue, teacher at the school during that time. "The school was the focal point to meet to discuss the needs of the school as well as the community."

In 1949 the Veal, Tyus, Roopville and Bowdon schools were consolidated, and the Veal School was closed. Around 1951 the school became home to the Veal Community Improvement Club.

Beginning in 1954 the school's auditorium was used by local youth for roller skating on Friday nights and Sunday afternoons. The building was also used for movie serials, meetings, concerts, dramas, sports, and various fundraisers. The Carroll County Board of Education deeded the school to the community in 1955.

Use of the building waned, and the structure began to suffer as a result. In 1996 a small group of local alumni and former schoolteachers came together to revive interest in this building and put it back into active use. The group launched an aggressive program of concerts, singings, barbeques, cleanups, auctions, and similar events. As funds were raised, the group began rehabilitating the building. The Historic Preservation Division of Georgia Department of Natural Resources and the Historic Preservation Planner from the Chattahoochee-Flint Regional Development Center were enlisted and consulted for advice on how to rehabilitate this building to National Register standards.

National Register of Historic Places **Continuation Sheet**

Section 8--Statement of Significance

In 1997 a new tin roof was installed, replacing the existing combination shingle/asphalt shingle roof. In 1998 and 1999 the building's outside windows were repaired. The group cleaned the grounds, installed a septic tank, and constructed the building's first indoor restrooms. Future work will focus on repairs to the building's structure, ceilings, and floors.

9. Major Bibliographic References

Adam, Martha, and Render Loftin, Ruth B. Perdue, Mr. Rev Doris (D.E.) Williamson, Opalene Williamson and Comer B. Yates. Carrollton, Georgia. Interview by Lynne Miller April 17, 2001.

Austin, Jeannette Holland. The Georgians: Genealogies of Pioneer Settlers. Baltimore: MD: Genealogical Publishing Co., Inc., 1986.

"Back to school." Bowdon Bulletin (Bowdon: GA) 31 October 1996, p. 1.

"Back to school." Times-Georgian (Carrollton: GA), 27 October 1996, p. 1B.

"Benefit planned for old Veal schoolhouse." Bowdon Bulletin (Bowdon: GA) July 17, 1997, p. 1.

Brand, Rev. Glen and Render Loftin, Frances Parmer, Herschel Parmer, L. Parmer, D.E. Williamson, Opalene Williamson. Veal School, Roopville, Georgia. Interview by Lynne Miller, September 9, 2003.

The Carroll County Heritage Book Committee and County Heritage, Inc. The Heritage of Carroll County 1826 - 2001. Waynesville: NC: Walsworth Publishing Co., Inc., 2002.

"Dr. Nutt and Veal: Happy After 50." Times-Georgian (Carrollton: GA), 1968.

Dugan, M. L. Report of Carroll County Schools 1918, June 20, 1918. Original on file at Carroll County Board of Education, Carrollton, GA.

Eady, Louise and Jemmee Iler, Mary Iler, Barbara Loftin, Render Loftin, L. Parmer and Helen Simms. Veal School, Roopville, Georgia. Interview by Lynne Miller, June 4, 1998.

Eady, Louise and Render Loftin, Opalene Williamson and Sonny Harris. Veal School, Roopville, Georgia. Interview by Lynne Miller, November 12, 2002.

"From Villa Rica to Veal: Preserving community heritage in Carroll County." Carroll Star News (Carrollton: GA), 25-31 May 2003, Section A, p. 1.

Garner, Mary Evelyn Wood. Veal(e) and Allied Families. Nashville, TN: Southern Library Bindery Co, 1997.

Jones, Doris Bran (former student), My Memories of Going to School at Veal, October 2001.

Loftin, Barbara and Render Loftin, Jim Simms, Mr. Rev Doris (D.E.) Williamson and Opalene Williamson. Veal School, Roopville, Georgia. Interview by Lynne Miller, September 12, 1996.

Loftin, Render (former student), My Special Memories of Veal School House - School Days, October 2001.

Perdue, Ruth B. (former teacher) to Whom it May Concern, A Community Loved, October 30, 2001.

National Register of Historic Places **Continuation Sheet**

Section 9—Major Bibliographic References

Quit Claim Deed, August 5, 2004, Deed Book 84, page 247.

"They'll be lifting their voices to raise the roof." *Times-Georgian* (Carrollton: GA), 17 July 1997, p. 1A.

Turner, Julie: Carroll County Comprehensive Plan 1992 - 2012, Historic Resources Element. Franklin, GA: Chattahoochee-Flint Regional Development Center, 1992.

Veal Community Club, Secretary's Records. Roopville: GA. 1954-1955.

"Veal community comes to rescue of historic school," Times-Georgian (Carrollton: GA), 26 January 1997, p. 1A.

Warranty Deed, dated November 24, 1958.

Warranty Deed, dated January 14, 1995.

Yates, Comer (former student, principal), To the friends for Veal School, October 2001.

Previous documentation on file (NPS): (X) N/A

- () preliminary determination of individual listing (36 CFR 67) has been requested
- () preliminary determination of individual listing (36 CFR 67) has been issued
date issued:
- () previously listed in the National Register
- () previously determined eligible by the National Register
- () designated a National Historic Landmark
- () recorded by Historic American Buildings Survey #
- () recorded by Historic American Engineering Record #

Primary location of additional data:

- (X) State historic preservation office
- () Other State Agency
- () Federal agency
- () Local government
- () University
- () Other, Specify Repository:

Georgia Historic Resources Survey Number (if assigned): N/A

10. Geographical Data

Acreage of Property 1 acre

UTM References

A) Zone 16 Easting 664363 Northing 3700789

Verbal Boundary Description

The boundary of the nominated property is indicated on the attached map by a heavy black line.

Boundary Justification

The boundary of the nominated property follows the current legal boundary and includes the school building and the intact portion of land historically associated with the school.

11. Form Prepared By

State Historic Preservation Office

name/title Holly L. Anderson, National Register Historian
organization Historic Preservation Division, Georgia Department of Natural Resources
mailing address 34 Peachtree Street, N.W., Suite 1600
city or town Atlanta **state** Georgia **zip code** 30303
telephone (404) 656-2840 **date** October 27, 2005
e-mail holly_anderson@dnr.state.ga.us

Consulting Services/Technical Assistance (if applicable) () not applicable

name/title Lynne Miller, Preservation Planner
organization Chattahoochee-Flint Regional Development Center
mailing address P.O. Box 1600
city or town Franklin **state** Georgia **zip code** 30217
telephone (770)854-6026
e-mail lmiller@cfrdc.org

- () **property owner**
() **consultant**
(X) **regional development center preservation planner**
() **other:**

Property Owner or Contact Information

name (property owner or contact person) Render Loftin
organization (if applicable) Veal Community Center, Inc.
mailing address 2938 Roopville-Veal Road
city or town Roopville **state** Georgia **zip code** 30170
e-mail (optional)

National Register of Historic Places **Continuation Sheet**

Photographs

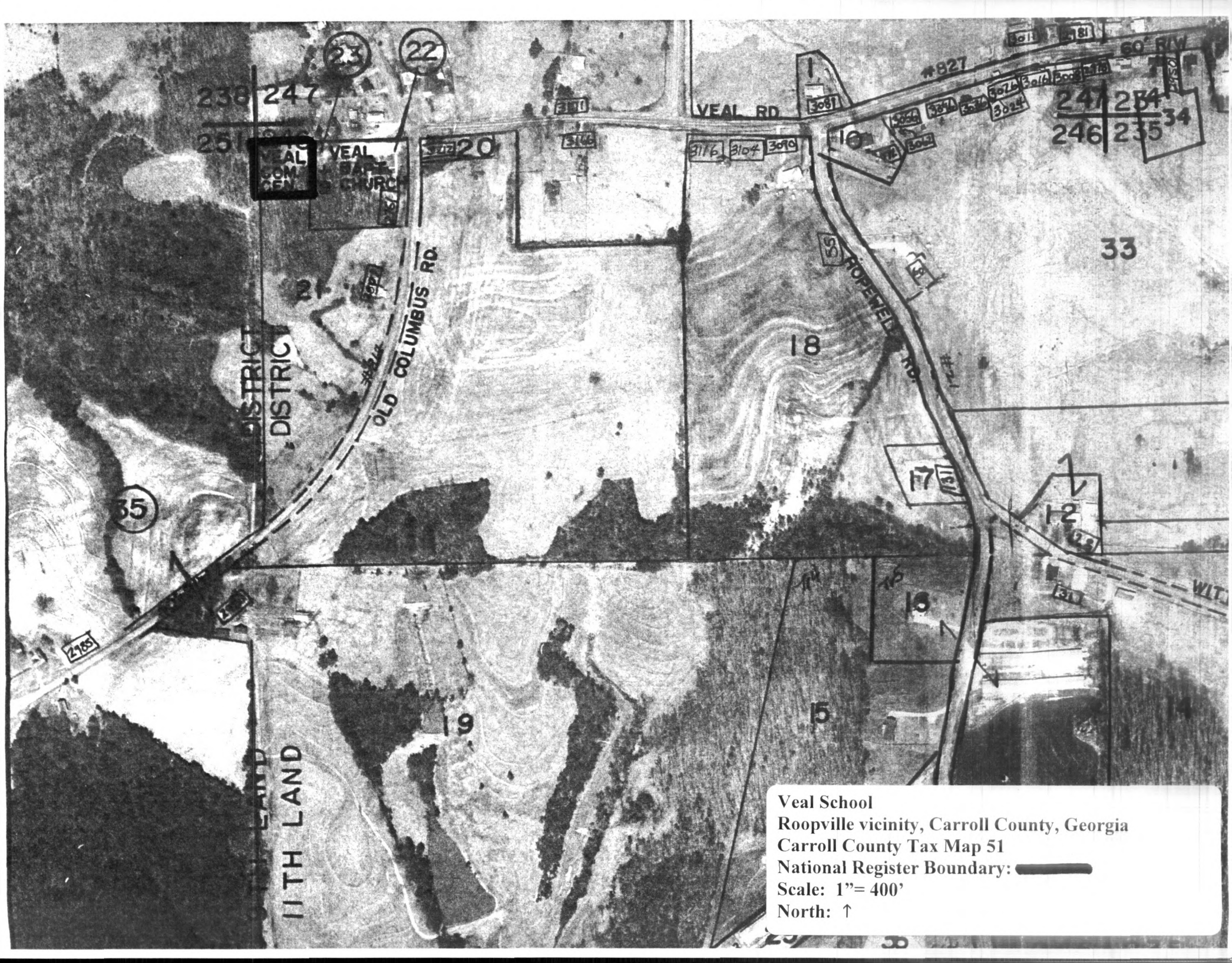
Name of Property: Veal School
City or Vicinity: Roopville, vicinity
County: Carroll
State: Georgia
Photographer: James R. Lockhart
Negative Filed: Georgia Department of Natural Resources
Date Photographed: April, 2005

Description of Photograph(s):

Number of photographs: 12

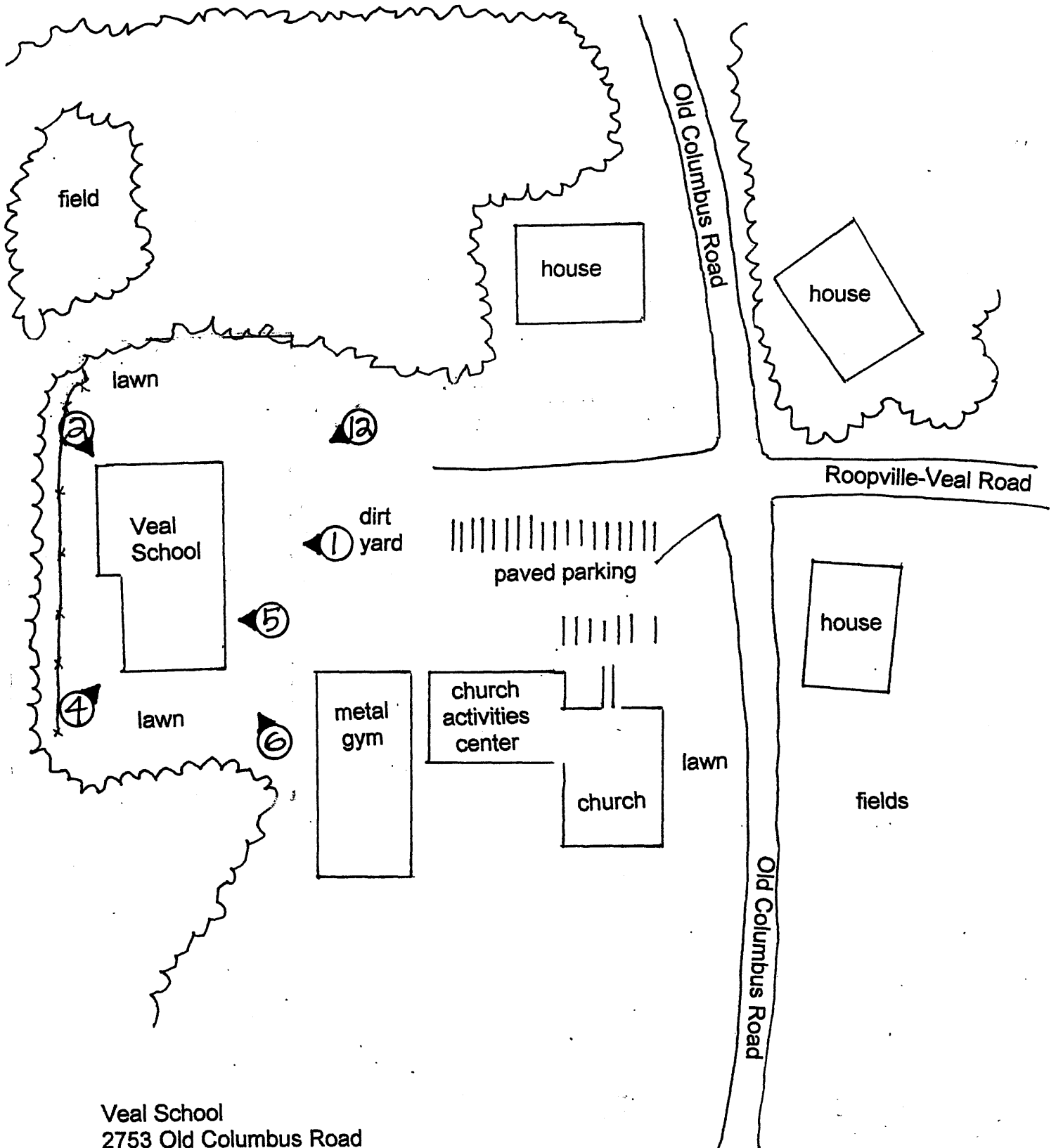
1. East (front) façade; photographer facing west.
2. North façade and west (rear) façade; photographer facing southeast.
3. Shingle detail.
4. Rear façade and south façade; photographer facing northeast.
5. Front façade, door and window detail; photographer facing west.
6. Front façade and south façade; photographer facing northwest.
7. Interior, classroom; photographer facing southeast.
8. Interior, hall; photographer facing south.
9. Interior, classroom; photographer facing northwest.
10. Interior, hall; photographer facing south.
11. Interior, auditorium; photographer facing northwest.
12. Front façade and north façade; photographer facing southwest.

(HPD WORD form version 11-03-01)



Veal School
Roopville vicinity, Carroll County, Georgia
Carroll County Tax Map 51
National Register Boundary: **—————**
Scale: 1" = 400'
North: ↑

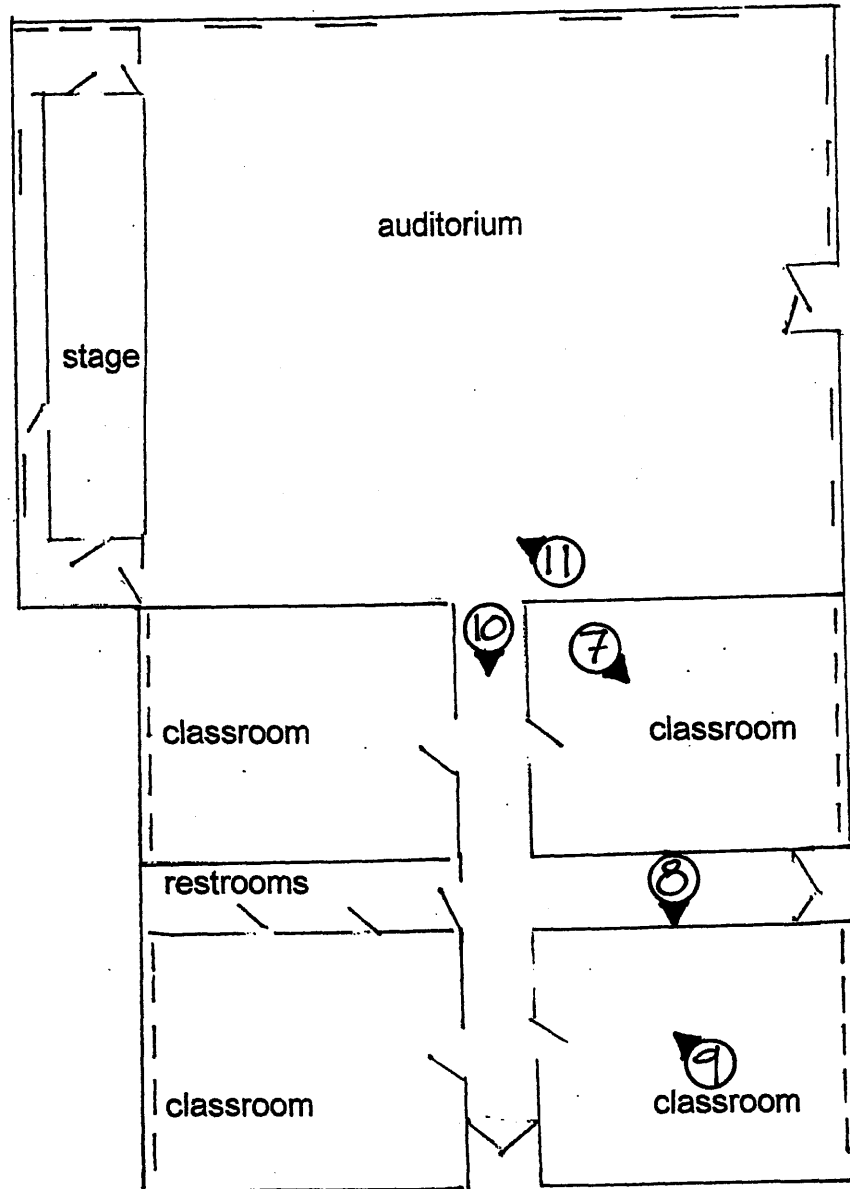
Sketch Map




Veal School
2753 Old Columbus Road
Roopville, Carroll County, GA 30170
Drawn by Lynne Miller, September 2003

Veal School
Roopville vicinity, Carroll County, Georgia
Site Plan with surroundings
Photograph Direction/Number: ①
Scale: not to scale
North: ↑

Floor Plan



Veal School
2753 Old Columbus Road
Roopville, Carroll County, GA 30170
Drawn by Lynne Miller, September 2003

Veal School
Roopville vicinity, Carroll County, Georgia
Floor Plan
Photograph Direction/Number: 
Scale: not to scale
North: ↑