



Thomas Arch Bridge
Auburn Township, Kansas
Martha Hagedorn-Krass

September, 1989

Kansas State Historical Society

West elevation, southeast view

1 of 12



Thomas Arch Bridge
Auburn Township, Kansas
Martha Hagedorn-Krass
September, 1989
Kansas State Historical Society
Parapets / South view
2 of 12

Parapets / SV



Thomas Arch Bridge
Auburn Township, Kansas
Martha Hagedorn-Krass
September, 1989
Kansas State Historical Society
West elevation / Northeast View
3 of 12

WE/NEV



Thomas Arch Bridge
Auburn Township, Kansas
Martha Hagedorn - Krass
September, 1989
Kansas State Historical Society
Parapets / North View
4 of 12

Parapets / NV



Thomas Arch Bridge
Auburn Township, Kansas
Martha Hagedorn - Krass
September, 1989
Kansas State Historical Society
Balustrade / East view
5 of 12

Balustrade / EV



Thomas Arch Bridge
Auburn Township, Kansas
Martha Hagedorn - Kraus
September, 1989
Kansas State Historical Society
Balustrade / Southwest view
6 of 12

Balustrade SW

COMMISSIONERS
SHEWHEE CO.
CHIPPERS CHAIR
J.C. SHIVER 1916
BOYD FOLLOM
W.C. ARNOLD, ENG.

Thomas Arch Bridge
Auburn Township, Kansas
Martha Hagedorn - Krass
September, 1989
Kansas State Historical Society
Balustrade / West view
7 of 12

Balustrade / WV

ALLEN'S FURNON
TOPEKA KANS. 1916
DESIGNED BY
W. M. THOMAS
PATENTEE.

Thomas Arch Bridge
Auburn Township, Kansas

Dale Newton

1983

Kansas Dept. of Transportation

Date Plate, Northeast corner of balustrade

Non-extant

8 of 12

Photo date = 1983

Date Plate / Northeast corner
of balustrade - non-extant
~~1983 Date Plate NE corner~~



Thomas Arch Bridge
Auburn Township, Kansas
Martha Hagedorn - Kress
September, 1989
Kansas State Historical Society
East elevation/northwest view
9 of 12

EE / NWV



Thomas Arch Bridge
Osborne Township, Kansas

Dale Newton

1983

Kansas Dept. of Transportation
Abutment, North view

10 of 12

Photo date = 1983
Abutment, NV

~~1983 N. abutment~~



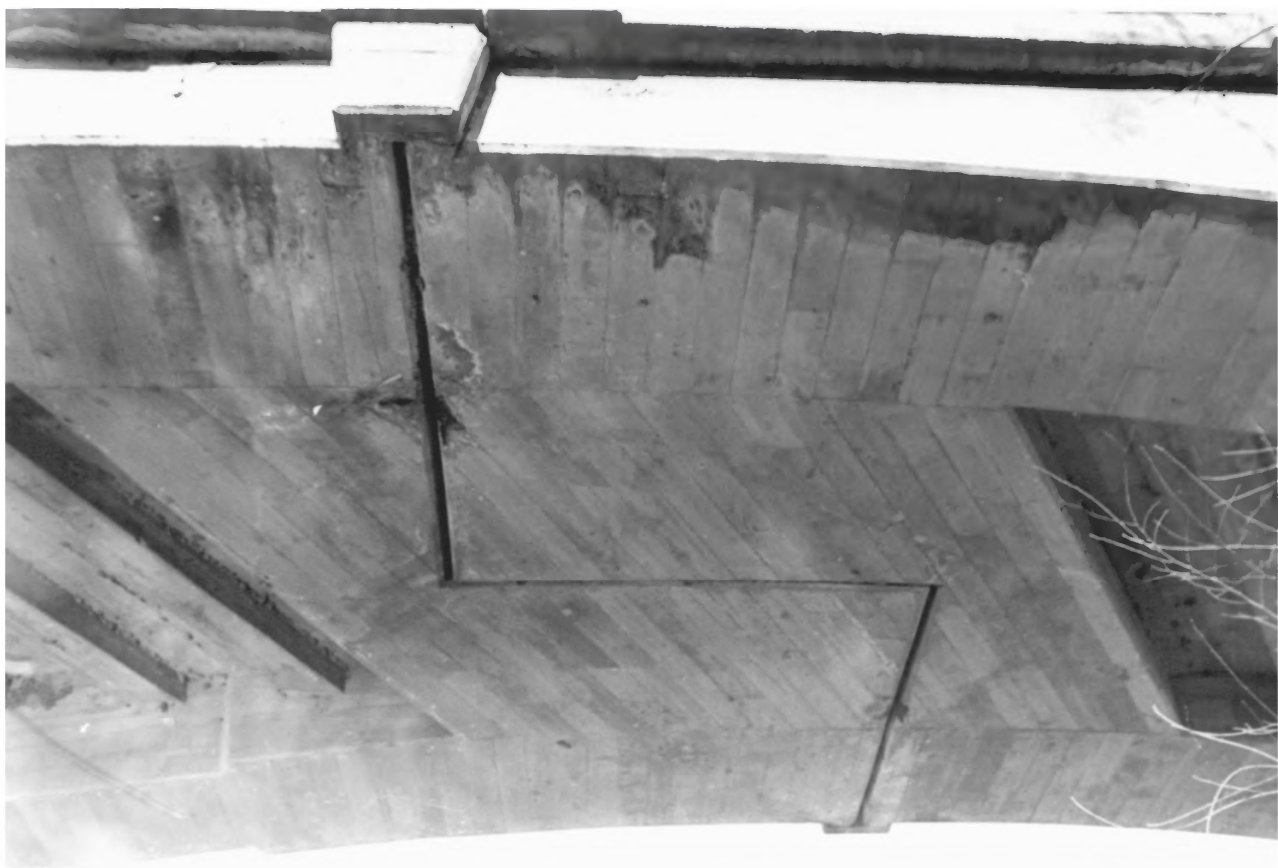
Thomas Arch Bridge
Auburn Township, Kansas

Dale Newton

1983

Kansas Dept. of Transportation
Substructure, south view

11 of 12



Thomas Arch Bridge
Auburn Township, Kansas

Dale Newton

1983

Kansas Dept. of Transportation

Center view of substructure

12 of 12