



United States Department of the Interior


NATIONAL PARK SERVICE

1849 C Street, N.W.
Washington, D.C. 20240

December 20, 2010

Notice to file:

This property has been automatically listed in the National Register of Historic Places. This is due to the fact that the publication of our Federal Register Notice: "National Register of Historic Places: Pending Nominations and Other Actions" was delayed beyond our control to the point where the mandated 15 day public comment period ended after our required 45 day time frame to act on the nomination. If the 45th day falls on a weekend or Federal holiday, the property will be automatically listed the next business day. The nomination is technically adequate and meets the National Register criteria for evaluation, and thus, automatically listed in the National Register of Historic Places.


Edson Beall
Historian
National Register of Historic Places
Phone: 202-354-2255
E-mail: Edson_Beall@nps.gov
Web: www.nps.gov/history/nr

United States Department of the Interior
National Park Service

National Register of Historic Places Registration Form



This form is for use in nominating or requesting determinations for individual properties and districts. See instructions in *How to Complete the National Register of Historic Places Registration Form* (National Register Bulletin 16A). Complete each item by marking "x" in the appropriate box or by entering the information requested. If any item does not apply to the property being documented, enter "N/A" for "not applicable." For functions, architectural classification, materials, and areas of significance, enter only categories and subcategories from the instructions. Place additional entries and narrative items on continuation sheets (NPS Form 10-900a). Use a typewriter, word processor, or computer, to complete all items.

1. Name of Property

Historic name MUZZY-SHINE HOUSE

Other names/site number _____

2. Location

street & number 1506 West Mission Avenue not for publication _____

city or town Spokane vicinity _____

State Washington code WA county Spokane code 063 zip code 99201

3. State/Federal Agency Certification

As the designated authority under the National Historic Preservation Act of 1986, as amended, I hereby certify that this ☒ nomination ☐ request for determination of eligibility meets the documentation standards for registering properties in the National Register of Historic Places and meets the procedural and professional requirements set forth in 36 CFR Part 60. In my opinion, the property ☒ meets ☐ does not meet the National Register criteria. I recommend that this property be considered significant nationally ☐ statewide ☒ locally. (☐ See continuation sheet for additional comments.)

[Signature]
Signature of certifying official/Title

10-28-10
Date

WASHINGTON STATE HISTORIC PRESERVATION OFFICE
State or Federal agency and bureau

In my opinion, the property ☐ meets ☐ does not meet the National Register criteria. (☐ See continuation sheet for additional comments.)

Signature of certifying official/Title

Date

State or Federal agency and bureau

4. National Park Service Certification

I, hereby, certify that this property is:

☒ entered in the National Register.
____ See continuation sheet

☐ determined eligible for the
National Register.
____ See continuation sheet

☐ determined not eligible for the
National Register.

☐ removed from the
National Register.

☐ other (explain:)

[Signature]
Signature of the Keeper

Date of Action

12-20-10

5. Classification**Ownership of Property**

(Check as many boxes as apply)

☒ private
☐ public-local
☐ public-State
☐ public-Federal

Category of Property

(Check only one box)

☒ building(s)
☐ district
☐ site
☐ structure
☐ object

Number of Resources within Property

(Do not incl. previously listed resources in the count.)

Contributing	Non-Contributing	
1		buildings
		sites
		structures
		objects
1		Total

Name of related multiple property listing:

(Enter "N/A" if property is not part of a multiple property listing.)

N/A

Number of contributing resources previously listed in the National Register

N/A

6. Functions or Use**Historic Functions**

(Enter categories from instructions)

DOMESTIC: single dwelling

Current Functions

(Enter categories from instructions)

DOMESTIC: single dwelling

7. Description**Architectural Classification**

(Enter categories from instructions)

LATE VICTORIAN: Queen Anne

Materials

(Enter categories from instructions)

foundation STONE: basalt

walls BRICK

roof ASPHALT

other

Narrative Description

(Describe the historic and current condition of the property.)

SEE CONTINUATION SHEET

United States Department of the Interior
National Park Service

National Register of Historic Places Continuation Sheet -

MUZZY-SHINE HOUSE
SPOKANE COUNTY, WASHINGTON

Section number 7 Page 1 of 7

NARRATIVE DESCRIPTION

The Muzzy-Shine House built in 1889, is a high-style example of the Queen Anne tradition. Fronting the northwest corner of the intersection of Mission and Walnut in the West Central neighborhood in northwest Spokane, Washington, the 2,600-plus-square-foot-house is one of the oldest, largest, tallest, and most architecturally prominent homes in the area. With an imposing edifice of red brick and granite, the 2.5-story house is dominated by a steeply pitched cross-hip roof with front and side facing gables, multiple full-height bay windows, decorative bargeboards, brackets, overhangs, spindlework, and a covered wrap-around front porch. As a particularly prominent focal point of the house, a canted square bay dominates the southwest corner façade and soars to a height of 35 feet, terminating at a steeply pitched gable roof. The bay resembles a tower and is embellished with a curved wood sunburst in the peak, a granite cornice, an oval ruby-glass bull's eye window, two oversized windows with stained glass transom windows, and an unusual application of massive granite quoins which were carefully cut to curve around the outside corners of the bay. Cut granite is also prominently displayed on the house as arched lintels over the windows on the second floor, window sills, a water table course, and as an ashlar foundation. Interior appointments include the Queen Anne style's propensity for numerous rooms, which in the Muzzy-Shine House revolve around prominent center "great halls" at the first and second floors. Woodwork is of the finest quality oak and is manifested as flooring, window-door-fireplace surrounds, paneled wainscoting, interior doors, pocket doors, and a prominent staircase/stairwell. Regarded as an architectural focal point of the neighborhood, the Muzzy-Shine House retains a high degree of exterior architectural integrity in original location, setting, design, materials, workmanship, feeling, and association as one of the first single-family "mansions" built in Spokane during the 1880s.

CURRENT CONDITION & APPEARANCE

Site

Well-preserved in excellent condition, the Muzzy-Shine House is located in the center of Lots 1, 2, and part of 3 on Block 2 in Coler's Boulevard Addition at the northwest corner of West Mission Avenue and North Walnut Street in the West Central neighborhood of northwest Spokane. The building site measures 110 feet wide and 102 feet deep, reveals a level grade, and is surrounded on the east and south by a paved public sidewalk which was poured in 1910. The footprint of the house is irregular and is approximately 30 feet wide and 45 feet deep. The home is framed by shrubs, trees, and a manicured lawn, and is located in the center of a residential historic neighborhood where nearly all of the surrounding homes were built during the early 1900s, ten to fifteen years *after* the Muzzy-Shine House was erected.

House Exterior

The Muzzy-Shine House is a tall house at 2.5 stories and is covered with a steeply pitched cross-hip roof with front and side facing gables. The roof is covered with composition shingles and has moderately wide unenclosed overhanging eaves and a simple cornice. Two brick chimneys with corbelled chimney caps

United States Department of the Interior
National Park Service

National Register of Historic Places Continuation Sheet -

MUZZY-SHINE HOUSE
SPOKANE COUNTY, WASHINGTON

Section number 7

Page 2 of 7

project from the ridge crest of the roof. The home reveals twelve-to-fifteen-inch-thick brick masonry construction at the first and second floors, and a two-to-three foot thick foundation made of black basalt rock with a granite ashlar face. The bricks, laid in running bond, are fired red which is in dramatic contrast to the granite ashlar foundation. A prominent curved granite watertable course separates the foundation from the first floor. While the home's irregular design is asymmetrical, fenestration patterns are symmetrically balanced. Windows are a combination of original fixed wood-sash and 1/1 double-hung units, and at least two windows (a transom and a keyhole) are glazed with leaded and colored glass. Granite arched lintels, and granite window sills highlight the windows.

South Façade

The house faces south onto Mission Avenue and is accessed at the front by a paved stone walkway that bisects the front yard. The south façade of the house is dominated by three prominent features: a full-height center-projecting bay, a tower-like full-height canted square bay at the southwest corner, and a covered wrap-around front porch at the southeast corner on the first floor. The wall surface of the façade and the entire house is prominent with red brick masonry construction which retains a deep red color that is especially heightened by white-painted trim and granite embellishment. The full-height bay in the center of the south facade is capped by a steeply pitched front-facing gable peak. The gable peak is articulated with a prominent scalloped bargeboard, wood shingles, and a dentiled overhang. At the second floor, the bay is punctuated by three windows. The windows are 1/1 double-hung, wood-sash units which are adorned with arched granite headers and granite sills. At the first floor, the bay features a center front entry door flanked by two windows. Another bay—a full-height box bay which resembles a tower—is located prominently at the southwest corner of the house and terminates in a steeply pitched front-facing gable peak. The gable peak is embellished curved wood planks which radiate upward in a sunburst design. A prominent frieze board is located below and is made of decorative granite panels. A bull's eye window with a segmental brick surround and granite keystones is glazed with ruby cathedral glass and is located below the frieze. A granite-arched window with a leaded and colored-glass transom is centered at the second floor under the keyhole window, and is anchored with a granite window sill. Another window with a transom light is centered at the first floor under the second-floor window and has a granite lintel and granite sill. The foundation is constructed of granite laid with an ashlar face and supports a granite water table course which separates the foundation from the first floor. The full-height corner bay is adorned and highlighted with a most unique feature: massive granite quoins which were cut to curve around the outside corners of the bay. The granite foundation features the same curved design as it curves around the outside corners of the bay at the level of the foundation.

The third prominent feature of the home's south façade is a covered front porch at the first floor which shades the front entrance and extends east and north as it wraps around the southeast corner of the house. The porch has a very shallow pitched hip roof and supports a gabled pediment at the southeast corner of the

United States Department of the Interior
National Park Service

National Register of Historic Places Continuation Sheet -

MUZZY-SHINE HOUSE
SPOKANE COUNTY, WASHINGTON

Section number 7 Page 3 of 7

porch. The porch roof is supported by turned-wood porch posts and highlighted by scroll-sawn brackets with circular cutouts. A plain wood balustrade surrounds the porch deck. A wood lattice covers the space under the porch. Four curved granite steps rise to the center of the front porch at the south façade.

East Elevation

The east elevation of the house is completely visible as it faces Walnut Street and is considered a secondary façade. It is dominated by a prominent tower-like full-height four-sided beveled bay with a conical roof which supports a large gabled roof dormer. The dormer has exposed eaves, a prominent bargeboard with scalloped ends, wood shingle cladding, and a pair of 1/1 double-hung windows surmounted by a multi-paned fanlight. The overhanging eaves at the beveled bay are unenclosed and are supported by decorative scroll-sawn brackets with circular cutouts. The second floor of the bay is punctuated by three 1/1 double-hung wood-sash windows with arched granite lintels and plain granite sills. The first floor bay windows are 1/1 double-hung units with large transom lights, arched granite lintels, and granite sills. The covered front porch wraps around the southeast corner of the home's façade and extends down the east elevation of the house to the beveled bay. After being interrupted by the bay, the covered porch resumes at the north side of the bay and extends to the northeast corner of the house (there is no covered porch across the face of the beveled bay). Wood steps ascend from grade and lead to the porch deck at the northeast corner. Wood lattice covers the space under the porch.

West Elevation

The west elevation of the house is plain with red brick masonry construction, granite ashlar foundation, curved granite water table course between the foundation and first floor, and symmetrical window placement at the first and second floors. All of the windows at the first and second floors have granite sills, lintels, and arches. A prominent full-height box bay projects four feet from the planar wall surface and is capped with a gable roof. The roof is slightly flared at the peak.

North Elevation

The north elevation of the house is at the home's rear and features a center cellar door which is located partially below grade. A center single fixed-sash window with a curved arch is located over the center cellar entrance and has a granite sill and a segmental brick arch. A small flat roof projects outward from the house below the window over the cellar entrance and is supported by wood posts (added in the 1970s). Wood steps descend from grade to a cellar door which is made of wood.

United States Department of the Interior
National Park Service

National Register of Historic Places Continuation Sheet -

MUZZY-SHINE HOUSE
SPOKANE COUNTY, WASHINGTON

Section number 7 Page 4 of 7

House Interior

The interior of the Muzzy-Shine House has more than 2,600 square feet at the first and second floors, and 500 finished square feet in the basement.¹ The front door, an original five-paneled example made of solid oak, opens into a spacious central reception hall, which is sometimes referred to as a "great hall" when describing element of the Queen Anne style.² The reception hall is finished with the highest quality quarter-sawn oak woodwork, floors, paneled wainscoting, and stairway which climbs up the east wall to a landing, turns, and ascends to another spacious "great hall," this one at the second floor. The stairway has a closed stringer and a turned-post balustrade made of oak. Chamfered oak newel posts anchor the staircase and are adorned with walnut-colored floral rosettes and round-knobbed newel caps. The north wall of the reception hall features a fireplace with an oak mantel and oak étagère shelving that flank each side of a rectangular firebox. An original cast iron firebox fits into the firebox opening and was made to burn wood kindling. A glazed ceramic tile surround made of mottled Italian tiles highlights the fireplace along with a matching hearth.

Two original matching thick, five-paneled solid oak pocket doors slide open at the west wall in the reception hall to a front parlor (living room) which is located in the southwest corner of the first floor. The focal point of the living room is a bay window at the southwest corner. Like the reception hall, the floor in the living room is made of oak and the ceiling is ten feet high. A door on the north wall of the living room opens into a small kitchen along the center west wall. The kitchen is appointed with built-in cupboards and cabinets which are made of painted pine. The floor is oak, woodwork is painted, and ceiling height is ten feet. A door on the east wall in the kitchen opens into a formal dining room which is located along the east center wall of the house. A door on the north wall of the kitchen opens to a back hallway which leads to a bathroom and an apartment at the rear of the house in the northwest and northeast corners (apartment constructed in 1920-1936). According to previous residents, the rooms were originally designed as a bathroom and the kitchen/butler's pantry.³ From the hallway, a narrow wood interior staircase descends along the west wall to the basement which is partially finished with a laundry room and a one-bedroom apartment. The remaining space in the basement holds a gas-fired furnace and storage area.

Like the first floor, rooms at the second floor revolve around a center reception hall at the top of the stairs. The floor, woodwork, and wainscoting are made of fine quality oak that matches the oak floor, woodwork, and wainscoting in the first-floor reception hall. A balustrade with turned-posts circles around the open staircase and stairwell. The second-floor hall leads west into a bedroom in the southwest corner, and a

¹ Spokane County Tax Assessor Records. Spokane County Courthouse, Spokane, WA.

² Carley, Rachel. *The Visual Dictionary of American Domestic Architecture*. New York: Holt Publishing, 1994, p. 155.

³ Interview with the Patrick Shine family, 2009.

United States Department of the Interior
National Park Service

National Register of Historic Places Continuation Sheet -

MUZZY-SHINE HOUSE
SPOKANE COUNTY, WASHINGTON

Section number 7 Page 5 of 7

north-wall door in the bedroom opens into a bathroom. A door at the north wall in the second-floor hall opens into an interior hallway that leads north to a bedroom at the center east wall, a bathroom at the center west wall, a narrow interior staircase designed for domestic help along the west wall, and a bathroom and two rooms at the rear of the house in the northwest and northeast corners. Except for the second-floor reception hall, the woodwork on the second floor is painted wood, the floors are a combination of oak, vinyl, and ceramic tile, and the ceiling height is 9.3 feet. All of the interior doors are original five-paneled solid wood examples, and the woodwork is original with decorative Eastlake-style incised lines and "bull's eye" corner block paterae around doors and windows.⁴

ORIGINAL APPEARANCE & SUBSEQUENT MODIFICATIONS

Original Appearance

The Muzzy-Shine House was illustrated in an 1890 aerial perspective map of Spokane with a footprint of the house and porch, the home's 2.5-story irregular house form, and a fruit orchard which surrounded the house. The 1890 drawing of the home's footprint and form matches what exists today. Subsequent Sanborn Fire Insurance maps from 1902, 1908, and 1910 (revised in 1924) pictured the home's existing footprint which has not changed since the house was built except for a 1909 addition (now demolished) and an east elevation section of porch that was removed in the 1960s-1970s.

A circa 1912 black-and-white photograph of the house pictures the home's original location, design, irregular footprint, 2.5-story form, 1/1 double-hung windows, fixed-sash windows, covered front porch, original brick masonry construction, and granite arches, lintels, window sills, and foundation face. Three features pictured in the photograph do not exist today: the original wood lattice located beneath the porch, the original porch balustrade with wooden turned-posts,⁵ and a single-story addition at the northeast rear corner of the house. The addition was built at the north end of the east elevation's covered porch as a single-story hexagonal solarium with a low-pitched conical roof and rows of multi-paned windows. Access to the solarium was through a door at the north end of the covered porch and perhaps through an interior door from the kitchen, originally located in the northeast corner of the house. The solarium was built in 1909 and demolished during the 1940s.⁶ The original porch balustrade and lattice were removed in the 1970s and replaced with a plain wood balustrade and wood lattice. The current owners intend to remove

⁴ The Eastlake "style" is "not of architecture but of ornamentation, associated with the English designer Charles Locke Eastlake (1836-1906). Decorative elements included: spindlework, perforated bargeboards and pediments, carved panels, large ornamental fanlike brackets, highly ornamental moldings, and decorative hardware fittings such as door knobs and locks." Harris, p. 323.

⁵ The current owners found the original porch balusters and rails stored under the porch. The original balustrade was 23 inches high from the porch deck.

⁶ Grandchildren of Patrick Shine, the second owner of the property, said the solarium was gone by the 1940s.

United States Department of the Interior
National Park Service

National Register of Historic Places Continuation Sheet -

MUZZY-SHINE HOUSE
SPOKANE COUNTY, WASHINGTON

Section number 7 Page 6 of 7

the existing circa 1970s porch balustrade and lattice and replace it with a new balustrade and lattice that exactly replicates the original design.

Modifications to the Muzzy-Shine House include:

- 1905:* Furnace boiler installed along with hot water cast iron radiators for steam heat throughout house
- 1909:* Solarium addition built at rear northeast corner of house
- 1910:* Installation of city water meter (fresh piped-in city water was now available in addition to well water)⁷
- 1912:* Installation of city sewer system (indoor plumbing was now available which meant that indoor bathroom construction and kitchen remodel probably occurred at this time)⁸
- 1920-1936:* House modified to accommodate two second-floor apartments: one in southwest corner and one in northeast corner⁹
- 1940s-1950s:* Northeast corner of basement finished with one apartment¹⁰
- 1950s-1960s:* Five first-floor windows at northeast rear corner of east elevation lost in fire, replaced with 1/1 aluminum-sash units that mimic original window design. Original kitchen in northeast corner of first floor modified to an apartment.
- 1980:* Basement apartment enlarged and remodeled
- 1990s:* Composition roof installed (other roof installations may have occurred between 1880s and 1990s—original roof was probably wood shingle as was the popular choice when the house was built 1889)

⁷ Spokane City Water Permit. Spokane City Hall, Spokane, WA.

⁸ Spokane City Sewer Permit. Spokane City Hall, Spokane, WA.

⁹ Spokane City Building Permit. Spokane City Hall, Spokane, WA.

¹⁰ Spokane County Tax Assessor Records. Spokane County Courthouse, Spokane, WA.

United States Department of the Interior
National Park Service

National Register of Historic Places Continuation Sheet -

MUZZY-SHINE HOUSE
SPOKANE COUNTY, WASHINGTON

Section number 7 Page 7 of 7

- 2007-09: First-floor reception hall restored, kitchen remodeled, second-floor reception hall refinished/repainted, second-floor center west bathroom remodeled, interior of house repainted and refinished (floors, walls, woodwork)
- 2010: Door to dining room from reception hall on first floor re-installed and dining room restored (oak floor, walls, ceilings refinished)

Remarkably, the Muzzy-Shine House, after more than a century of use, retains a high degree of exterior and interior architectural integrity in original location, setting, design, materials, workmanship, feeling, and association as a single-family home built in 1889 in Spokane, and readily conveys its architectural significance as a landmark example of the Queen Anne style.

8. Statement of Significance**Applicable National Register Criteria**

(Mark "x" in one or more boxes for the criteria qualifying the property for National Register listing.)

- ☐ **A** Property is associated with events that have made a significant contribution to the broad patterns of our history.
- ☐ **B** Property is associated with the lives of persons significant in our past.
- ☒ **C** Property embodies the distinctive characteristics of a type, period, or method of construction or represents the work of a master, or possesses high artistic values, or represents a significant and distinguishable entity whose components lack individual distinction.
- ☐ **D** Property has yielded, or is likely to yield, information important in prehistory or history.

Criteria Considerations

(Mark "x" in all the boxes that apply.)

Property is:

- ☐ **A** owned by a religious institution or used for religious purposes.
- ☐ **B** removed from its original location.
- ☐ **C** a birthplace or grave.
- ☐ **D** a cemetery.
- ☐ **E** a reconstructed building, object, or structure.
- ☐ **F** a commemorative property.
- ☐ **G** less than 50 years old or achieving significance within the past 50 years.

Areas of Significance

(Enter categories from instructions)

ARCHITECTURE

Period of Significance

1889-1954

Significant Dates

1889

Significant Person

(Complete if Criterion B is marked above)

N/A

Cultural Affiliation

N/A

Architect/Builder

Unknown

Narrative Statement of Significance

(Explain the significance of the property.)

SEE CONTINUATION SHEET

9. Major Bibliographical References**Bibliography**

(Cite the books, articles, and other sources used in preparing this form.)

Previous documentation on file (NPS):

- ☐ preliminary determination of individual listing (36 CFR 67) has been requested
- ☐ previously listed in the National Register
- ☐ previously determined eligible by the National Register
- ☐ designated a National Historic Landmark
- ☐ # _____
- ☐ recorded by Historic American Engineering

SEE CONTINUATION SHEET

Primary location of additional data:

- ☒ State Historic Preservation Office
- ☐ Other State agency
- ☐ Federal agency
- ☒ Local government
- ☐ University
- ☐ Other

Name of repository:

Spokane City/County Historic Preservation Office

United States Department of the Interior
National Park Service

National Register of Historic Places Continuation Sheet -

MUZZY-SHINE HOUSE
SPOKANE COUNTY, WASHINGTON

Section number 8 Page 1 of 8

STATEMENT OF SIGNIFICANCE

Built in 1889, the Muzzy-Shine House is a high-style, landmark example of the Queen Anne tradition in Spokane, Washington, and was named after its two most significant resident owners, H. N. Muzzy and P. C. Shine. The home was erected for Hiram N. Muzzy, a pioneer farmer and orchardist who came to Spokane in 1880, homesteaded 160 acres north of the Spokane County Courthouse, and upon receiving his patent, platted and sold more than 500 lots on his land which he called Muzzy's Addition. The second owners of the property were Mary Gomm Shine and her husband, Patrick C. Shine, a prominent Spokane attorney and politician who held various offices and government positions; served as consulate commissioner to British Columbia, Alberta, and Saskatchewan, Canada; and provided legal counsel to railroad companies and real estate enterprises in Oregon and Spokane. A native of Limerick County, Ireland, Shine was recommended twice for appointment as United States Minister to the Irish Free State, the last recommendation coming just before his death.¹ The Muzzy-Shine House achieved significance from 1889, the year it was built, through the year Patrick Shine died in 1934, to the death of his wife, Mary Gomm Shine, in 1954. Well-preserved and significant in the area of significance, "architecture," the Muzzy-Shine House is eligible for listing on the National Register of Historic Places under Criterion C.

HISTORICAL CONTEXT

In 1880, the city of Spokane was called Spokane Falls, or just the "Falls," and had a population of 350.² The town was built around a series of powerful waterfalls that interrupted the flow of the Spokane River, and boasted a few sawmills, flour mills, and a little downtown core which was centered around Front Avenue (now Spokane Falls Boulevard) and Howard Street on the south side of the river. Northwest historian, William Stimson (*A View of the Falls: An Illustrated History of Spokane*), wrote the following street-scene description of early Spokane:

The California Hotel stood on the corner now occupied by the Carousel. Looking south from that corner, up Howard, one would see most of the town—three blocks of solidly packed wooden buildings. Signs on the big squared-off false fronts and on windows read "Jack Squire's Saloon," "McCammon and Whitman Men's Clothing," "R. W. Rima, Jeweler," "Graham's—Grocery, Liquors, Tobaccos."³

By 1881, Northern Pacific Railroad tracks were completed through Spokane, and a few years later, a maze of railroad lines began crowding into town. Finally, Spokane was linked to markets and cities across the

¹ "Chronoscope." *Spokane Daily Chronicle*, 29 Oct 1971, p. 10.

² Stimson, p. 25.

³ Ibid.

United States Department of the Interior
National Park Service

National Register of Historic Places Continuation Sheet -

MUZZY-SHINE HOUSE
SPOKANE COUNTY, WASHINGTON

Section number 8 Page 2 of 8

country and throughout the United States, and became a bustling railroad hub and important shipping center for lumber, agriculture, and mining products.

Spokane continued to grow as a mixture of pioneer settlers, farmers, miners, lumberjacks, millworkers, doctors, dentists, merchants, grocers, saloonkeepers as well as bankers, businessmen, lawyers, investors, entrepreneurs and others began to settle in the town. One of these pioneer farmers was Hiram N. Muzzy who in 1880 homesteaded 160 acres north of the Spokane River on land just outside the city limits. In 1888, Muzzy platted his homestead, called it Muzzy's Addition, and in 1889, built his mansion: the nomination house.

Hiram & Rebecca Muzzy

Hiram Newton Muzzy was born in 1824 in Fowler, Ohio and married Rebecca Ann Ames. They had five children and moved to Spokane in November 1880 where Hiram applied for a 160-acre homestead claim. The claim was located north of downtown Spokane in the southeast quarter of Section 12 in Township 25 North, Range 42 East. When the Muzzy family homesteaded the claim, the area was described by Muzzy as undeveloped "prairie farming land" with no minerals and "no timber."⁴ The area was sparsely populated and Muzzy's nearest neighbors were just a handful of landowners and their families who lived within a mile or two of Muzzy's property. These men and their families included Colonel David P. Jenkins, I. S. Kaufman, Amos Ragsdale, and Chester D. Ide, all prominent citizens in Spokane.⁵

After arriving in Spokane in 1880, Muzzy and his family immediately built a small temporary frame cabin, a frame barn (16 feet by 24 feet), a cistern with an outhouse, and about two miles of wood fence to contain chickens, cows, horses, and stock. Listed in various city directories as a farmer, gardener, and fruit grower, Muzzy cultivated 12 acres of soil on which he grew "all kinds of vegetables" and 1,500 fruit trees; the remaining acreage was left in pasture.⁶ Around 1882-1884, Muzzy replaced the small cabin with a large, two-story frame house which measured 24 feet wide and 26 feet deep and had an estimated net worth of \$2,000.⁷ As depicted on an 1890 aerial perspective map of Spokane, the two-story house had a rectangular footprint, a hip roof, and a full-width covered front porch. It faced east onto what is now Cedar Street and was surrounded by fruit trees which Muzzy had planted. A windmill was located behind the house, marking the location of a fresh-water well. Hiram & Rebecca Muzzy and their five children lived in the house which Muzzy said contained "six beds, two stoves, carpets, pictures, kitchen furniture, almost

⁴ Muzzy's 1887 patent application.

⁵ 1887 affidavits for Muzzy from Ide and Jenkins.

⁶ Muzzy's 1887 patent application.

⁷ Ibid.

United States Department of the Interior
National Park Service

National Register of Historic Places Continuation Sheet -

MUZZY-SHINE HOUSE
SPOKANE COUNTY, WASHINGTON

Section number 8 Page 3 of 8

everything for housekeeping.”⁸ Muzzy worked hard on his property to prove his homestead claim, and in 1887 he applied for a United States Patent which would grant him full ownership of the property. His application was approved and in 1888 he received the much hoped-for patent. It was signed by United States President Grover Cleveland, and conveyed all 160 acres to Hiram Muzzy.⁹ According to legal documents, Muzzy then “*dedicated streets and platted city lots, put them on the market, conveying by warranty deed, and maintained exclusive control over the property.*”¹⁰ He called the plat Muzzy’s Addition and began selling off the addition’s 500-plus lots.

Muzzy’s Addition was bounded by Montgomery Street to the north, Mission Avenue to the south, Belt Street to the west, and Cedar Street to the east, and was sited just north of the Spokane County Courthouse. Architects, builders, real estate developers, and would-be homeowners purchased Muzzy’s lots and improved them with the erection of single-family homes which were all built during the late 1890s and early 1900s. After Muzzy’s wife, Rebecca Muzzy, died in 1886, Muzzy remarried in 1887. In 1889 with proceeds from the sale of various lots, he built his “dream home,” a tall rambling 2.5-story brick and granite house of mansion-size proportions. The house was built behind and west of the two-story frame house on Cedar Street, and was erected on level ground at the northwest corner of Mission Avenue and Walnut Street. It was designed as a high-style example of the Queen Anne tradition, faced south at 1506 West Mission Avenue, and because of its magnanimous size and height, expensive brick and granite cladding, and decorative features, became a north Spokane focal point. An architectural beacon of the neighborhood, Muzzy’s tall, rambling mansion was the first house erected in Muzzy’s Addition and set the stage for subsequent residential development. Single-family homes, some of which were larger and stylistically more prominent than others, were erected in Queen Anne, Neoclassical, Tudor Revival, and Craftsman traditions but styles as eloquent as that of Muzzy’s landmark Queen Anne-style house never materialized. Muzzy’s house remains one of the only brick masonry-constructed homes in the area.

Just four years after the house was built, a severe economic depression in 1893 spread across the country, causing hundreds of thousands of bank and business closures, property foreclosures, and many financial fortune reversals. In 1895, Hiram Muzzy was forced to leave his large brick Queen Anne-style house and move into a small frame home one block east at 1404 W. Mission. Less than a year later in 1896, he moved to the southwest corner of East Third Avenue and Haven Street in what was then the Spokane Valley, and was listed in city directories as a “gardener and fruit grower.” In 1900, Hiram Muzzy married again (third marriage), and by 1904 had moved to Portland, Oregon where he died in 1908 at the age of 83.

⁸ Ibid.

⁹ Ibid.

¹⁰ Washington Reports, Vol 39, p. 70. Supreme Court of Washington, May 8, 1905 to Sept 5, 1906.

United States Department of the Interior
National Park Service

National Register of Historic Places Continuation Sheet -

MUZZY-SHINE HOUSE
SPOKANE COUNTY, WASHINGTON

Section number 8 Page 4 of 8

By 1902 the property was owned by Muzzy's daughter, Lucy Muzzy Tompkinson. She sold the house, which was sited on Lots 1 and 2, along with adjoining Lots 3, 4, 5, and 6, all on Block 2, to Spokane real estate agent/investor, Charles B. Hole on February 20, 1902.¹¹

Patrick C. Shine & Mary Gomm Shine

In 1903 Patrick C. Shine and his wife, Mary Gomm Shine, purchased the property from Charles B. Hole for \$5,000. A prominent Spokane attorney and well-known politician, Patrick Shine and his family lived in the nominated house for more than 50 years, from 1903 to Patrick's death in 1934 and Mary's death in 1954.¹²

Patrick C. Shine was born to a large family in Limerick County, Ireland in 1863. He received his education from the National School of Ireland followed by study at the Civil Institute and the Literary Institute of Dublin. In 1885, Shine left his homeland and joined his family in America where he studied pre-law and jurisprudence in Missouri. While studying, he held full-time jobs at different times with the Union Pacific Railroad and as Jackson County Deputy Collector for Jackson County, Missouri. He then went to Oregon where he was employed by the Oregon Short Line and the Oregon Railroad & Navigation Company as purser and cashier. In 1894, Shine moved to Spokane where he worked for the Union Depot Company, became a member of the American Railway Union, and "was promptly elected its secretary and treasurer."¹³ As told by northwest historian, N. W. Durham, "this affiliation changed his course completely and forced him into politics" and the practice of law.¹⁴

From 1899 through the early 1900s, Patrick Shine helped found and was affiliated with several legal firms in Spokane, including Armour, Cool & Shin; Armour & Shine; and Shine & Winfree, lawyers. He had offices in the Peyton Building and later, the Fernwell Building and the Symons Block. In 1903 Shine was appointed lawyer/commissioner/consular agent for British Columbia, Canada, and later to the additional Canadian provinces of Alberta and Saskatchewan, holding these positions continually for more than two decades. A politician at heart, Patrick Shine was active in political affairs during the 1920s and 1930s in the Spokane region, attending county and state democratic conventions, running for various offices, and serving elected terms at different times as a Washington State Democratic Representative, chairman of the

¹¹ Spokane County Warranty Deeds, Book 125, page 46. Spokane County Courthouse, Spokane, WA.

¹² According to the Shine family in 2009, Patrick & Mary Shine had previously homesteaded property along the Spokane River in the vicinity of Post Falls, Idaho in the 1800s before they purchased Hiram N. Muzzy's house at Walnut and Mission. As told by Shine family descendents, Patrick & Mary Shine bought the Muzzy property to serve as their "in town" residence while Patrick Shine worked in Spokane during the week. On weekends the family retreated to their property along the Spokane River.

¹³ Durham, pp. 34-35.

¹⁴ Ibid.

United States Department of the Interior
National Park Service

National Register of Historic Places Continuation Sheet -

MUZZY-SHINE HOUSE
SPOKANE COUNTY, WASHINGTON

Section number 8 Page 5 of 8

Washington State Democratic Convention, and as state delegate to the National Democratic Convention in Houston in 1928. Patrick Shine's greatest ambition, however, was to be the "minister to the Irish Free State," a position for which he was recommended twice by United States Senator Clarence C. Dill but never filled, the last recommendation coming just before Shine's death in 1934.¹⁵

Patrick Shine's obituary praised him as a "veteran in politics...a prominent attorney and democratic politician...[who] had a delightful even temperament, rarely showed any irritation or excitement, and therefore was frequently called upon to be chairman of meetings" and various organizations throughout the Spokane region.¹⁶ Northwest historian N. W. Durham described Shine as "popular" with "social qualities, ready wit, and attractive personality" that helped make him an enterprising and "successful...lawyer," one who had a "remarkably successful career."¹⁷ Patrick Shine married Mary Louise Gomm, a native of Savannah, GA, in 1904, and helped raise their two children, Patrick Jr. and Mairee Shine. Patrick Shine was a member of the Spokane Club, the Spokane Amateur Athletic Club, and St. Joseph's Catholic Church and parish.

During their tenure at the Muzzy-Shine House, the Shines, in 1909, built a single-story hexagonal solarium which they attached to the rear northeast corner of the house. Between 1910 and 1924, they built a brick masonry garage in the far northwest corner of their property, and in 1911, they purchased the east ten feet of Lot 3 which adjoined their property to the west. This newly acquired strip of land was used as a driveway which ran from Mission Avenue north along the west boundary of the property to the northwest-corner brick masonry garage. In the 1920s-1940s, the Shines remodeled the second floor of the house to accommodate two one-bedroom apartments, both with private kitchenettes. After Mary Shine's death in 1954, son Patrick Shine Jr. sold the north 47 feet of Lots 1 and 2 and the north 47 feet of the east ten feet of Lot 3 as a separate parcel to Emil & Muriel Lindblad for \$2,000. The same day, he also sold the Muzzy-Shine House and property to the Lindblads for \$8,000.

Subsequent Owners

During the next 50 years, the Muzzy-Shine House was owned by various people at different times. Adding to the two upstairs apartments, the house was modified again through the 1950s to accommodate up to five apartments with two on the second floor, two on the first floor, and one in the basement. During World War II, the northeast upstairs apartment was leased by Ruth Shanetaller whose husband was stationed overseas in the Army, and after her tenure, subsequent servicemen, servicewomen and other people rented

¹⁵ "Patrick C. Shine Dies-III Week." *Spokesman-Review*, 10 Dec 1924.

¹⁶ Ibid.

¹⁷ Durham, pp. 34-35.

United States Department of the Interior
National Park Service

National Register of Historic Places Continuation Sheet -

MUZZY-SHINE HOUSE
SPOKANE COUNTY, WASHINGTON

Section number 8 Page 6 of 8

at different times the apartments through the post-war years and up into the 2000s. The conversion of large, older homes and apartments became a city-wide trend in Spokane, beginning in the 1920s-1930s, and gained in popularity to house returning military servicemen and women in the war years. By the 1980s, at least two other large homes in the neighborhood had been remodeled as apartment houses at 1420 and 1518 W. Mission. In 2007, the current owners, Steven Sanford and Mike Schultz, purchased the Muzzy-Shine House and are carefully *reversing* apartment modifications at the property.

ARCHITECTURAL SIGNIFICANCE

The Muzzy-Shine House is nominated under Criterion C as an example of the Queen Anne style and boasts distinctive characteristics of the Queen Anne type, period, and method of construction during the late 1800s in Spokane, WA.

The Queen Anne Style

The Queen Anne style was strongly influenced by architectural examples designed by Scottish-born architect, Richard Norman Shaw (1831-1912). His work in England was exemplary as a "tremendously free and eclectic hybrid of forms drawn from a range of sources, including Classical, Tudor, and Flemish architecture."¹⁸ Shaw's work influenced the Queen Anne style in America which was similarly interpreted as an almost "free-for-all" blend of previous architectural styles and prototypes.

Popular in America from 1880 to 1910, the American Queen Anne style was built throughout the United States as single-family homes, row houses, and seaside retreats. In contrast to enormous castle-like Gothic structures or rambling Tudor manor houses of England, the Queen Anne style emphasized human scale and domestic comfort. "Its facades showed a great variety, featuring projecting oriels, bay windows, and odd rooflines. It was also rich in texture, with cut and molded brick, terra-cotta, and ornamental plaster."¹⁹ Author and architectural historian, Paul Duchscherer, further described the Queen Anne style in his book, *Victorian Glory in the San Francisco Bay Area*:

Among the most characteristic exterior features of the American Queen Anne house is the use of complex hipped roofs, and one of its most definitive forms is the tower, which was usually placed at a corner. The typical round Queen Anne tower with a conical roof is a French medieval form. The sides of towers were generally either round or multi-sided—usually octagonal, but rarely square.

¹⁸ Carley, p. 154.

¹⁹ Ibid, p. 155.

United States Department of the Interior
National Park Service

National Register of Historic Places Continuation Sheet -

MUZZY-SHINE HOUSE
SPOKANE COUNTY, WASHINGTON

Section number 8 Page 7 of 8

Prominent front porches are another important part of American Queen Anne houses. The shadows and roof lines were frequently employed to picturesque effect; sometimes porches were extended to wrap around the house, and provided convenient places to display a multitude of fancily turned posts, often with lacy spandrels stretching between them. The use of machine-carved wooden ornaments reached its apex in the Queen Anne style, and the shapes and combinations provided endless variety.²⁰

The Old House Dictionary summarizes the Queen Anne style as an architectural style characterized by tall vertical lines, asymmetry and "irregularity of plan and massing, variety of color and texture, variety of window treatment, multiple steep roofs, porches with decorative gables, frequent use of bay windows, chimneys that incorporate molded brick or corbelling, wall surfaces that vary in texture and material used."²¹ Whatever the architectural elements or materials, the premise behind the style was to provide as much decorative detail as possible. Exterior walls were never meant to be plain but instead were treated as canvases that displayed decorative devices which sought to interrupt the planar surface of the wall. Such devices included the use of bays, towers, turrets, overhangs, wall projections, different window shapes, cutaway corners, wrap-around porches, pediments, gables, pent roofs, fanciful and different-shaped wood shingle siding, clapboard, brick, stone, stucco, all comprising differing textures and shapes. Interior designs included spacious "great halls" with massive fireplaces, rooms designed for every imaginable use, prominent staircases, decorative wood floors-wainscoting-woodwork, and asymmetrical bays and alcoves.

The added interest and quirks produced by asymmetry are found in the floor plans of most Queen Anne houses. A prominent feature that adds interest to the outside and space to the inside is the room-wide angled bay window, which in combination with the diagonal placement of a corner fireplace often created octagonal rooms. Another characteristic is the lavish use of art glass and fireplace mantels that had over-mantels with mirror-back display shelves supported on decoratively turned columns. Doorways between rooms often had fretwork spandrels that were usually supplemented by fabric portieres...[or were wide] with sliding pocket doors.²²

The Queen Anne-style is well-defined at the Muzzy-Shine House with the following elements: a built date of 1889; tall irregular form and massing; steeply pitched cross-gable hip roof; prominent cornice and bargeboard details; brick masonry construction with prominent use of granite ashlar, lintels, arches, window sills, and watertable course; boxed & beveled bays and tower-like projections; wrap-around porch;

²⁰ Duchscherer, p. 107.

²¹ Phillips, pp. 129-130.

²² Duchscherer, pp. 93-107.

United States Department of the Interior
National Park Service

National Register of Historic Places Continuation Sheet -

MUZZY-SHINE HOUSE
SPOKANE COUNTY, WASHINGTON

Section number 8 Page 8 of 8

lathe-turned wood posts and balusters; scroll-sawn and cutout brackets; decorative woodwork with incised molding, rosettes; bull's eye paterae; paneled pocket and interior doors; paneled wainscoting; chamfered newel posts; fireplace surround with étagère shelving; tall 1/1 double-hung wood-sash windows with transom lights; and leaded and cathedral stained-glass windows.

The proportions and style of the Muzzy-Shine House allude to its design by a professional architect or experienced house designer. In addition, Hiram Muzzy was a man of means who would have been able to afford a professional architect. Although the home's architect has not yet been discovered, the Muzzy-Shine House is similar to the Loewenberg-Roberts Mansion in Browne's Addition. Both homes were built in 1889; both homes are landmark, high-style examples of the Queen Anne style; and both homes display a prodigious use of red brick masonry construction with heavy blocks of silver-colored granite—two materials which were used for many historic commercial buildings erected in downtown Spokane (most now demolished) but for very few single-family homes. William Carpenter, a British architect who worked in Spokane for three years in 1888, 1889, and 1890, designed the Loewenberg-Roberts House (built in 1888-89 at 1923 W. First Avenue), the Currie House (built in 1889 at 908 W. Frederick Avenue), and the Coeur d'Alene Hotel and the Miller Block (Hotel Lusso), both located in downtown Spokane. Carpenter may have designed the Muzzy-Shine House during the same time he completed plans for the Loewenberg-Roberts House and for the Currie House.

Summary

Nominated to the National Register of Historic Places, the Muzzy-Shine House is historically significant under Criterion C as a high-style landmark example of the Queen Anne tradition. The property retains a high degree of architectural integrity and conveys its historic and architectural significance.

10. Geographical Data**Acreage of Property** Less than one acre**UTM References**

(Place additional UTM References on a continuation sheet.)

1	<u>11</u> Zone	<u>4</u> <u>67</u> <u>611</u> Easting	<u>52</u> <u>79</u> <u>651</u> Northing	3	<u> </u> Zone	<u> </u> <u> </u> <u> </u> Easting	<u> </u> <u> </u> <u> </u> Northing
2	<u> </u> Zone	<u> </u> <u> </u> <u> </u> Easting	<u> </u> <u> </u> <u> </u> Northing	4	<u> </u> Zone	<u> </u> <u> </u> <u> </u> Easting	<u> </u> <u> </u> <u> </u> Northing

Verbal Boundary Description

See Continuation Sheet

Boundary Justification

See Continuation Sheet

11. Form Prepared By

name/title Linda Yeomans, Consultant
organization Historic Preservation Planning & Design date July 1, 2010
street & number 501 West 27th Avenue telephone (509) 456-3828
city or town Spokane state WA zip code 99203

Additional Documentation

Submit the following items with the completed form:

Continuation Sheets**Maps**A **USGS map** (7.5 or 15 minute series) indicating the property's location.A **Sketch map** for historic districts and properties having large acreage or numerous resources.**Photographs**Representative **black and white photographs** of the property.**Additional items**

(Check with the SHPO or FPO for any additional items.)

Property Owner (Complete this item at the request of the SHPO or FPO.)

name Steven A. Stanford and Michael Schultz
street & number 1506 W. Mission Avenue telephone (509) 328-1909
city or town Spokane state WA zip code 99201

United States Department of the Interior
National Park Service

National Register of Historic Places Continuation Sheet -

MUZZY-SHINE HOUSE
SPOKANE COUNTY, WASHINGTON

Section number 9&10

Page 1 of 2

BIBLIOGRAPHY

Carley, Rachel. *The Visual Dictionary of American Domestic Architecture*. New York: Henry Holt and Co., 1994.

Duchscherer, Paul. *Victorian Glory in San Francisco Bay Area*. New York: Viking Studio, 2001.

Durham, N. W. *The History of Spokane and the Spokane Country, Washington*, Vol. III, Spokane: S. J. Clarke Publishing Company, 1912.

Homestead applications, affidavits, and patent. USA Federal Archives, Washington DC.

McAlester, Lee & Virginia. *A Field Guide to American Houses*. New York: Knopf Publishing, 1989.

Muzzy, Joanne. *The Mussey, Muzzey, Muzzy Family 1633-1986*. Spokane, 1986.

Muzzy-Shine House. Black and white photograph, circa 1912.

Parker, Dr. C. W. *Who's Who in the Northwest, Vol. 2*. Portland: Western Press Association, 1917.

Phillips, Steven J. *Old House Dictionary*. Washington DC: Preservation Press, 1994.

Polk, R. L. *Spokane City Directory, 1885-2009*.

Sanborn Fire Insurance Maps, 1890, 1902, 1910, 1953.

Spokane City Building Permits. Spokane City Hall, Spokane, WA.

Spokane County Public Records. Spokane County Courthouse, Spokane, WA.

Spokane Aerial Perspective Map, 1890. Northwest Museum of Arts & Culture, Spokane, WA.

Stimson, William. *A View of Spokane Falls: An Illustrated History of Spokane*. CA: Windsor Publications, Inc, 1985.

Washington State Supreme Court Cases. 1892 and 1906.

United States Department of the Interior
National Park Service

National Register of Historic Places Continuation Sheet -

MUZZY-SHINE HOUSE
SPOKANE COUNTY, WASHINGTON

Section number 9&10

Page 2 of 2

Newspaper Articles

"Chroniscope." *Spokane Daily Chronicle*, 29 Oct 1971, p. 10.

"Died; Muzzy." *Portland newspaper*, 5 Mar 1908.

"George W. Muzzy Rites Set." *Spokane Daily Chronicle*, 5 Feb 1972.

"Patrick C. Shine Dies-Ill Week." *Spokesman-Review*, 10 Dec 1924.

GEOGRAPHICAL DATA

Verbal boundary description:

The nominated property is located in Coler's Boulevard Addition, Lots 1-2-3, Block 2 excluding north 47 feet. It is otherwise known as parcel no. 25124.5309

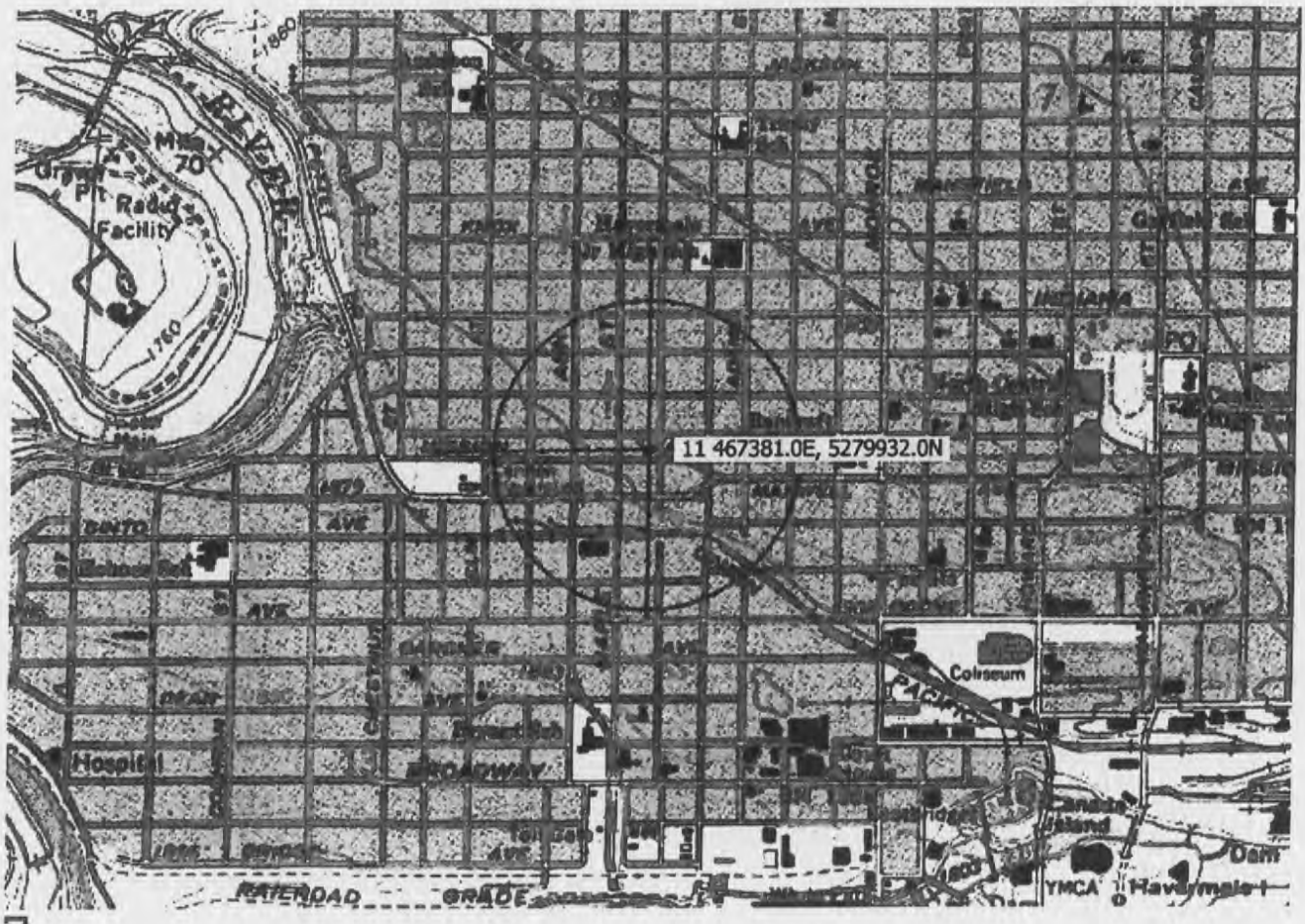
Boundary justification:

Nomination property includes the entire parcel currently associated with the Muzzy-Shine House

PHOTOGRAPHS

All photographs were taken in 2010 by the nomination author except for the circa 1912 photograph which is located with Shine Family Records.

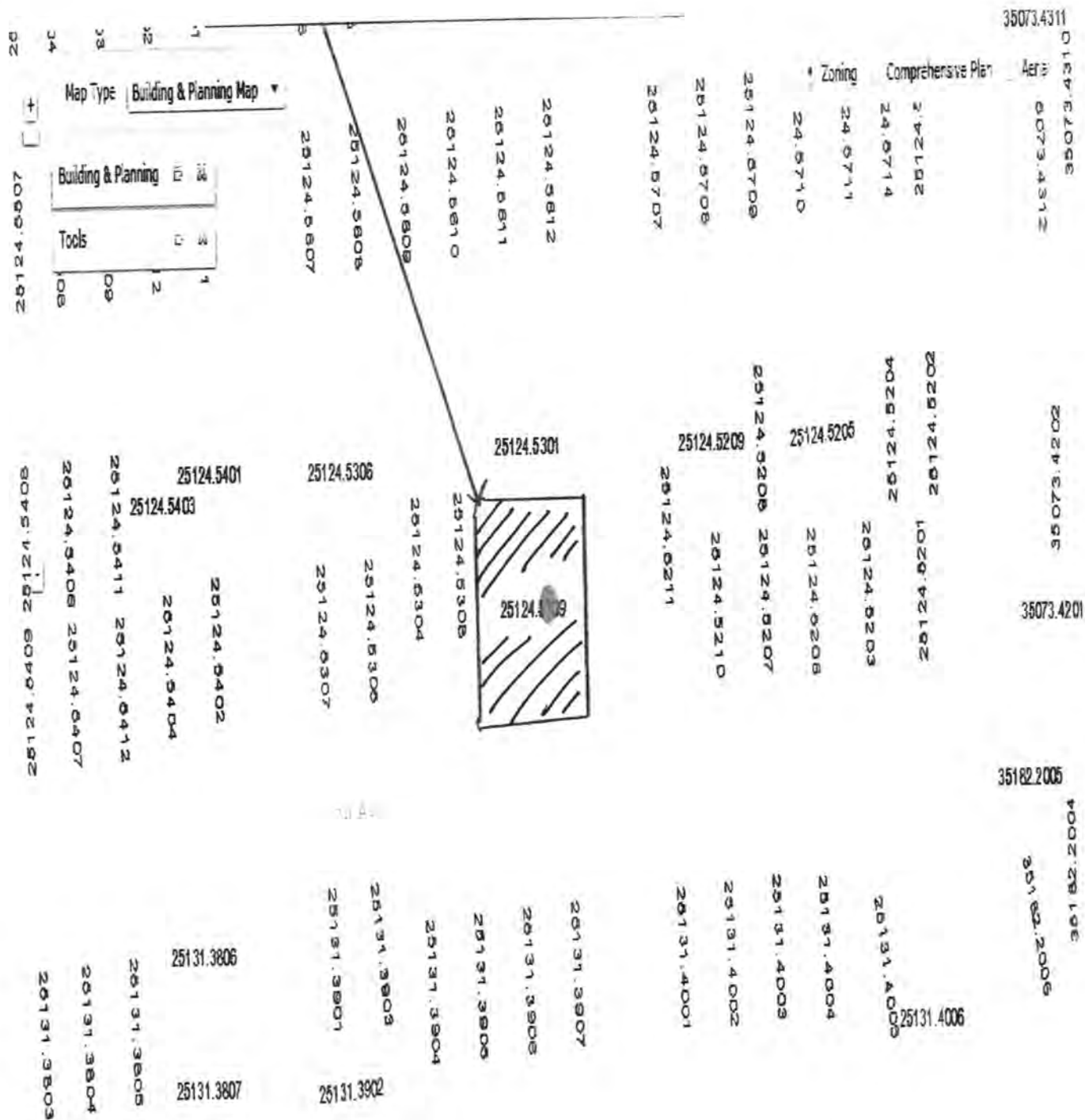
- Photo 1 Photo of an 1890 aerial perspective map of northwest Spokane, looking northwest from downtown Spokane. The drawing of a large rectangular piece of land at the upper center of the map is dotted with fruit trees and depicts the Muzzy-Shine House to the left of center in the rectangle.
- Photo 2 Circa 1912 historic photo of Muzzy-Shine House, looking northwest from Mission Avenue.
- Photo 3 Southeast façade corner of Muzzy-Shine House, looking northwest.
- Photo 4 East elevation of Muzzy-Shine House, looking west.
- Photo 5 Southwest corner façade of Muzzy-Shine House, looking northeast.
- Photo 6 West elevation of Muzzy-Shine House, looking east.
- Photo 7 Formal center reception hall in Muzzy-Shine House, looking north into dining room.
- Photo 8 Formal center reception hall in Muzzy-Shine House, looking east at formal staircase.
- Photo 9 Formal staircase in reception hall of Muzzy-Shine House, looking north and up to landing and second floor.

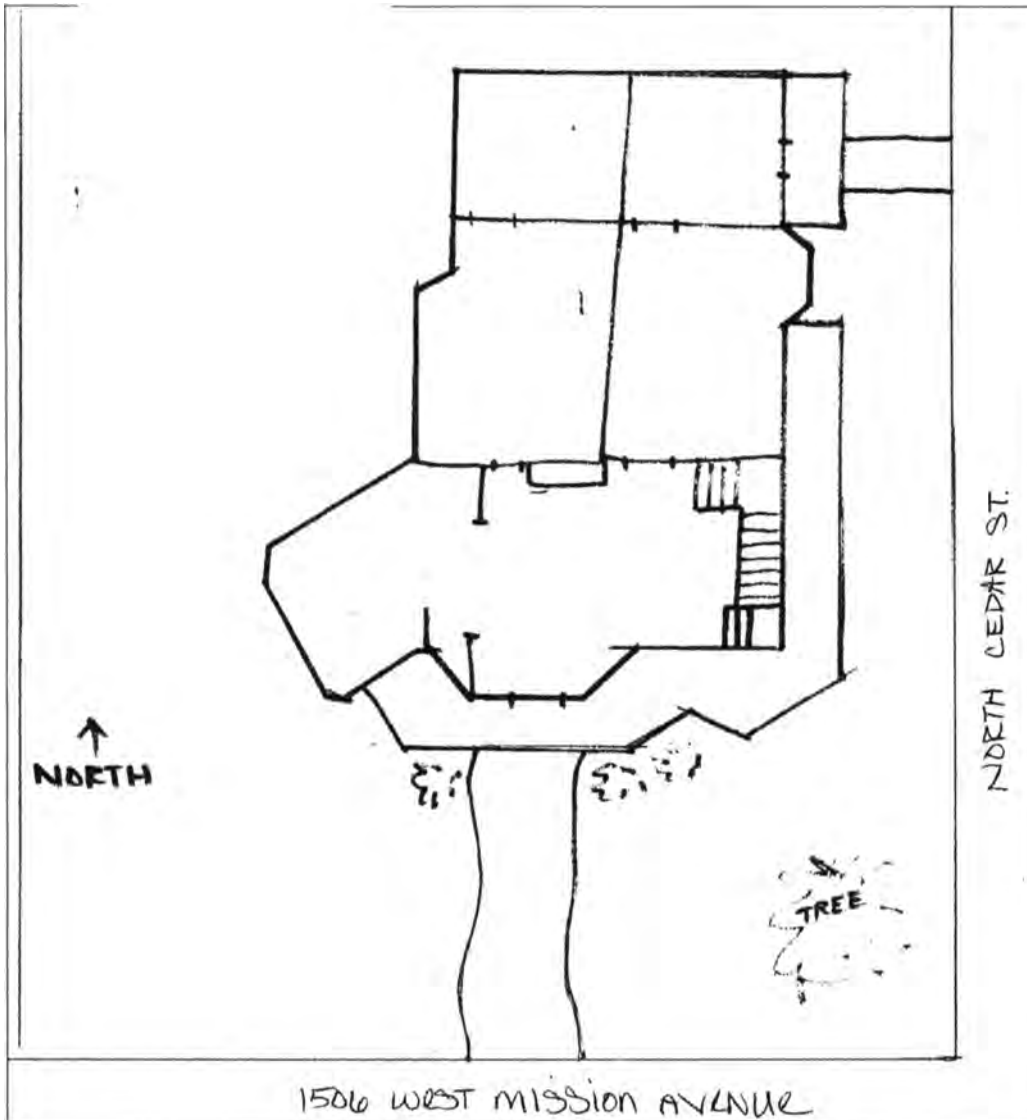


Location:

SHINE
MUZZY HOUSE
1506 W. Mission Ave
Spokane, WA 99205

City of Spokane Plat Map in 2010

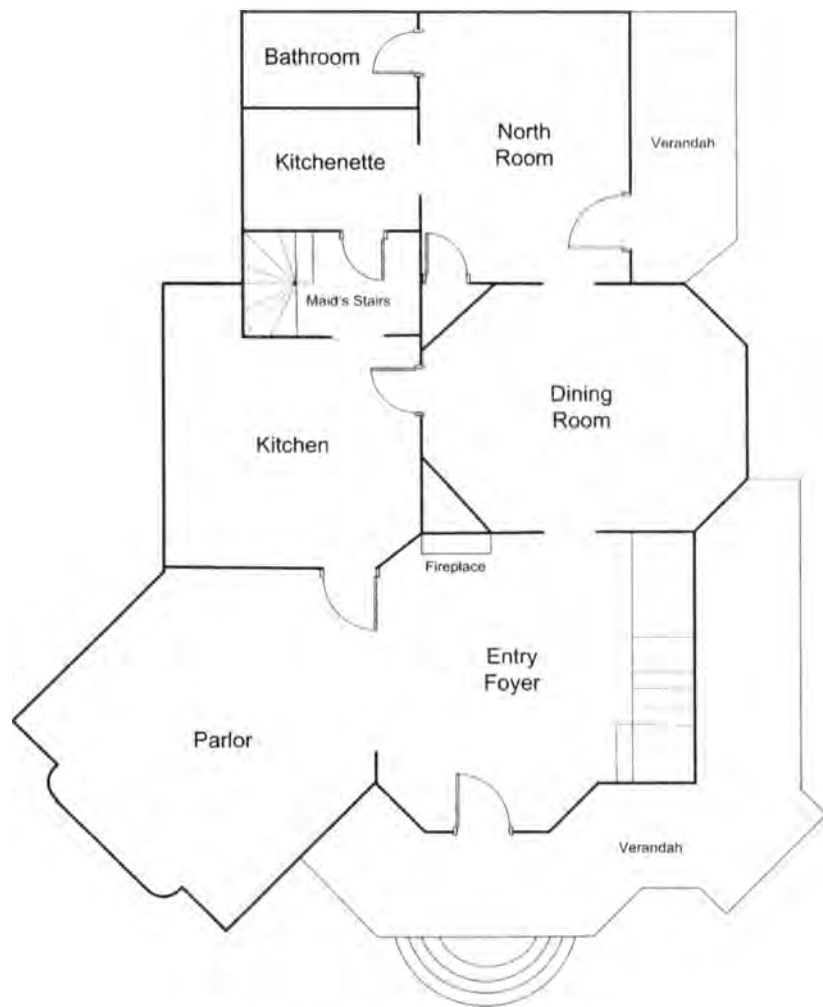




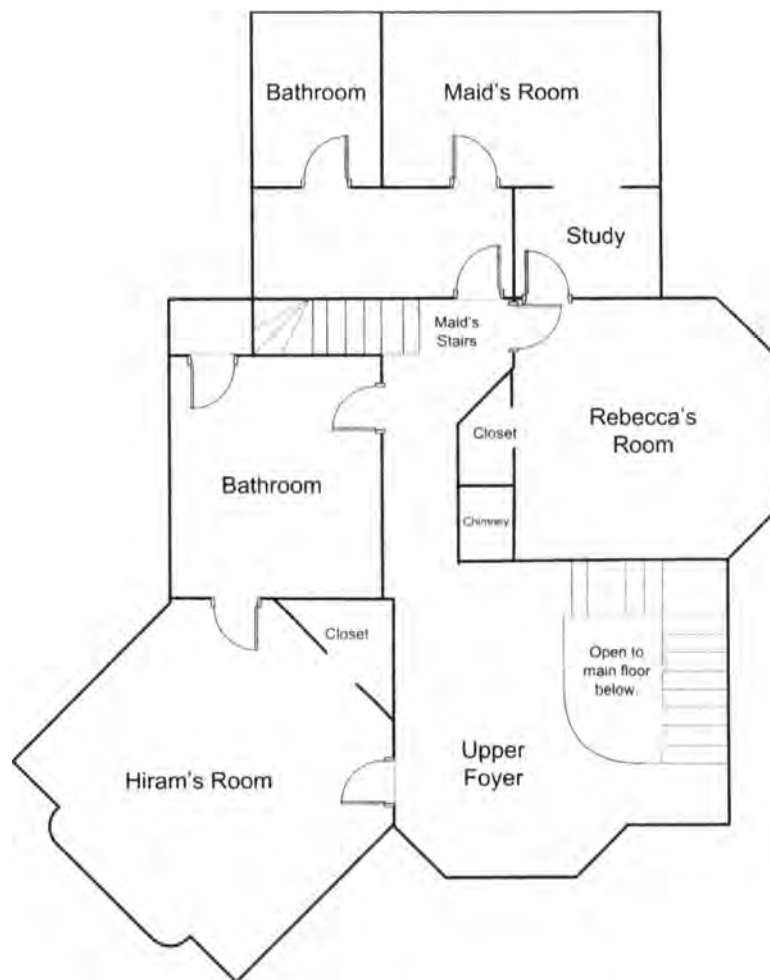
Muzzy-Shine House

Site Plan

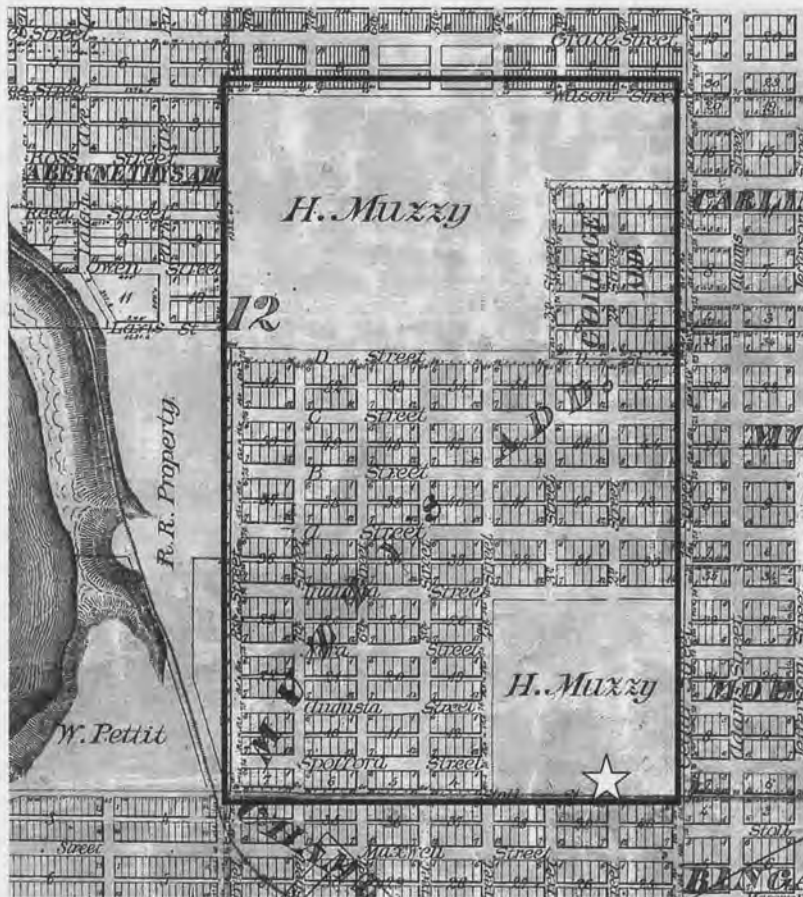
Not to Scale



Muzzy-Shine House
1st Floor



Muzzy-Shine House
2nd Floor



Map of Muzzy's Addition. Muzzy began platting out his 160-acre homestead into what would end up encompassing over 500 city lots. The Muzzy-Shine House is located at the Star at the SE Corner.



Cropped portion of an 1890 Bird's Eye view of Spokane Falls showing Muzzy's Addition. Dwelling 1 in the lower right portion of Muzzy's Addition is Muzzy's second home and windmill built on his homestead around 1883. Dwelling 2 to the left is the *Muzzy-Shine Mansion* built on the homestead in 1889. Both homes are surrounded by what remains of Muzzy's apple orchard.



Muzzy Family - C. 1860



P.C. Shine

Patrick C. Shine – c.1905.



Muzzy Shine House
- circa 1912

While residing in the home, the Shines built a large brick 2-bay carriage house behind the mansion and the large octagon glass solarium visible to the right in the photo above. The solarium had been removed by the 1940's. The house is otherwise the same today.

UNITED STATES DEPARTMENT OF THE INTERIOR
NATIONAL PARK SERVICE

NATIONAL REGISTER OF HISTORIC PLACES
EVALUATION/RETURN SHEET

REQUESTED ACTION: NOMINATION

PROPERTY Muzzy-Shine House
NAME:

MULTIPLE
NAME:

STATE & COUNTY: WASHINGTON, Spokane

DATE RECEIVED: 11/04/10 DATE OF PENDING LIST: 12/13/10
DATE OF 16TH DAY: 12/28/10 DATE OF 45TH DAY: 12/20/10
DATE OF WEEKLY LIST:

REFERENCE NUMBER: 10001045

REASONS FOR REVIEW:

APPEAL: N DATA PROBLEM: N LANDSCAPE: N LESS THAN 50 YEARS: N
OTHER: N PDIL: N PERIOD: N PROGRAM UNAPPROVED: N
REQUEST: N SAMPLE: N SLR DRAFT: N NATIONAL: N

COMMENT WAIVER: N

☒ ACCEPT ☐ RETURN ☐ REJECT 12.20.10 DATE

ABSTRACT/SUMMARY COMMENTS:

Entered in
The National Register
of
Historic Places

RECOM./CRITERIA _____

REVIEWER _____ DISCIPLINE _____

TELEPHONE _____ DATE _____

DOCUMENTATION see attached comments Y/N see attached SLR Y/N

If a nomination is returned to the nominating authority, the nomination is no longer under consideration by the NPS.



1. MUZZY-SHINE HOUSE
1506 W. MISSION
Spokane, WA

- 1890 aerial perspective
map of NW Spokane
- MUZZY-SHINE HOUSE
Depicted as large
dwelling on (L) side in
rectangle which is
dotted with ORCHARD
TREES - upper center
of map



China House

2. MUZZY-SHINE HOUSE
1506 W. MISSION AVE
Spokane, WA

- CIRCA 1912 PHOTO



3. MUZZY - SHINE HOUSE
1506 W. MISSION
SPOKANE, WA



4. MUZZY-SHINE HOUSE

1506 W. MISSION

SPOKANE, WA



5. muzzy - SHINE House
1500 W. MISSION
Spokane, WA



6. MUZZY-SHINE HOUSE
1500 W. MISSION
Spokane, WA



7. MUZZY-STINE HOUSE
1506 W. MISSION
SPOKANE, WA



8. MUZZY-SHINE HOUSE
1506 W. MISSION
SPOKANE, WA



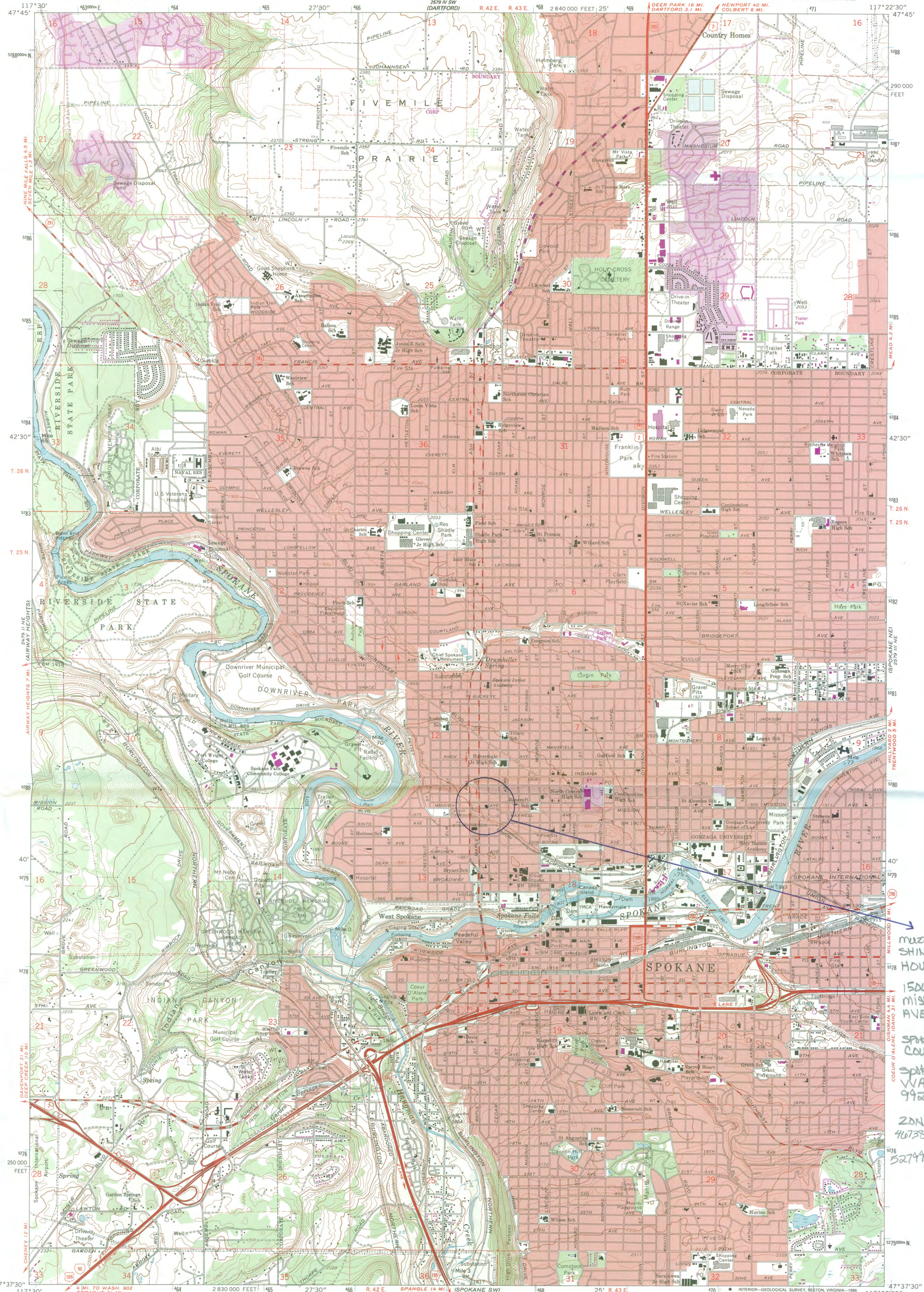
9. MUZZY-SHINE HOUSE
1506 W. MISSION
Spokane, WA

ONE MILE FALLS
201 SE
209 1/2

UNITED STATES
DEPARTMENT OF THE INTERIOR
GEOLOGICAL SURVEY

SPOKANE NW QUADRANGLE
WASHINGTON-SPOKANE CO.
7.5 MINUTE SERIES (TOPOGRAPHIC)
NW/4 SPOKANE 15' QUADRANGLE

279 1/2 SE
209 1/2
ONE MILE FALLS



FOUR LAKES
209 1/2 SE
209 1/2

Mapped, edited, and published by the Geological Survey

Control by USGS and NOS/NOAA

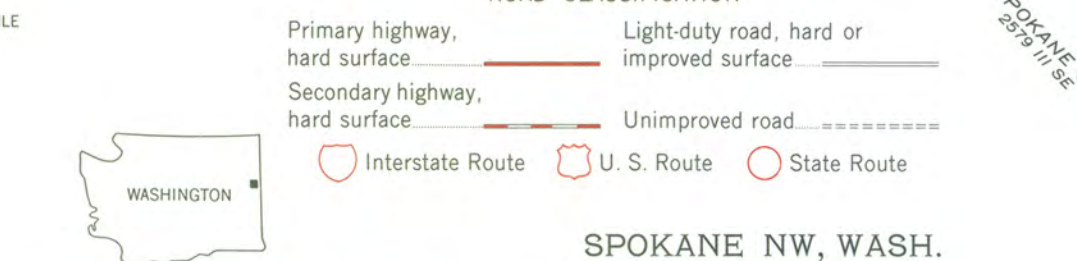
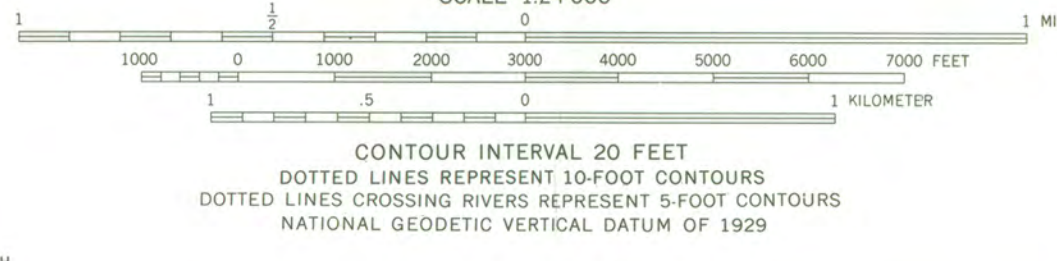
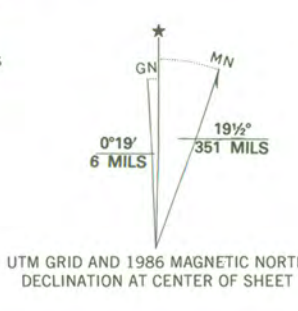
Topography by photogrammetric methods from aerial photographs taken 1946 and planetable surveys 1950. Revised from aerial photographs taken 1972. Field checked 1974

Projection and 10,000-foot grid ticks: Washington coordinate system, north zone (Lambert conformal conic)
1000-meter Universal Transverse Mercator grid ticks, zone 11, shown in blue. 1927 North American datum

Red tint indicates areas in which only landmark buildings are shown

To place on the predicted North American Datum 1983, move the projection lines 15 meters north and 79 meters east as shown by dashed corner ticks

There may be private inholdings within the boundaries of the National or State reservations shown on this map



SPOKANE NW, WASH.
NW/4 SPOKANE 15' QUADRANGLE
47117-F4-TF-024

1974
PHOTOGRAPHED 1986
DMA 2579 III NW-SERIES V891

Revisions shown in purple compiled from aerial photographs taken 1982 and other sources
This information not field checked. Map edited 1986
Purple tint indicates extension of urban areas

MUZZY SHINE HOUSE
1506 W. MISSION AVE.
SPOKANE COUNTY,
SPOKANE, WA
99201
ZONE II
467381 - EATING
527932 - NOTHING



STATE OF WASHINGTON
Department of Archaeology and Historic Preservation

1063 S. Capitol Way, Suite 106 - Olympia, Washington 98501
(Mailing Address) PO Box 48343 - Olympia, Washington 98504-8343
(360) 586-3065 Fax Number (360) 586-3067

October 28, 2010

Paul Lusignan
Keeper of the National Register
National Register of Historic Places
1201 "I" Street NW, 8th Floor
Washington, D.C. 20005

RE: **Washington State NR Nomination**

Dear Paul:

Please find enclosed three new National Register Nomination forms for

- **Northern State Hospital, Skagit County**
- **Muzzy-Shine House, Spokane County**
- **Lincoln Hotel, Lincoln County**

Should you have any questions regarding these nominations please contact me anytime at (360) 586-3076. I look forward to hearing your final determination on these properties.

Sincerely,



Michael Houser

State Architectural Historian, DAHP

360-586-3076

E-Mail: michael.houser@dahp.wa.gov