

United States Department of the Interior  
National Park Service



375

# National Register of Historic Places Registration Form

This form is for use in nominating or requesting determinations for individual properties and districts. See instructions in National Register Bulletin, *How to Complete the National Register of Historic Places Registration Form*. If any item does not apply to the property being documented, enter "N/A" for "not applicable." For functions, architectural classification, materials, and areas of significance, enter only categories and subcategories from the instructions. Place additional certification comments, entries, and narrative items on continuation sheets if needed (NPS Form 10-900a).

## 1. Name of Property

historic name California Granite Company

other names/site number Capitol Granite Co., Union Granite Co., Big Gun Mining Co.

## 2. Location

street & number 5255 Pacific Street

n/a	not for publication
n/a	vicinity

city or town Rocklin

state California code CA county Placer code 061 zip code 95677

## 3. State/Federal Agency Certification

As the designated authority under the National Historic Preservation Act, as amended,

I hereby certify that this  nomination  request for determination of eligibility meets the documentation standards for registering properties in the National Register of Historic Places and meets the procedural and professional requirements set forth in 36 CFR Part 60.

In my opinion, the property  meets  does not meet the National Register Criteria. I recommend that this property be considered significant at the following level(s) of significance:

national  statewide  local

*Michael Wayne Dahl* State Historic Preservation Officer 17 May 2012  
 Signature of certifying official/Title Date  
 California Office of Historic Preservation  
 State or Federal agency/bureau or Tribal Government

In my opinion, the property  meets  does not meet the National Register criteria.

\_\_\_\_\_  
 Signature of commenting official Date  
 \_\_\_\_\_  
 Title State or Federal agency/bureau or Tribal Government

## 4. National Park Service Certification

I hereby certify that this property is:

entered in the National Register  determined eligible for the National Register  
 determined not eligible for the National Register  removed from the National Register  
 other (explain): \_\_\_\_\_

*BP* 7/3/2012  
 Signature of the Keeper Date of Action

California Granite Company  
 Name of Property

Placer, CA  
 County and State

**5. Classification**

**Ownership of Property**  
 (Check as many boxes as apply.)

- private
- public - Local
- public - State
- public - Federal

**Category of Property**  
 (Check only one box.)

- building(s)
- district
- site
- structure
- object

**Number of Resources within Property**  
 (Do not include previously listed resources in the count.)

Contributing	Noncontributing	
3		buildings
1		sites
4	1	structures
		objects
8	1	<b>Total</b>

**Name of related multiple property listing**  
 (Enter "N/A" if property is not part of a multiple property listing)

N/A

**Number of contributing resources previously listed in the National Register**

none

**6. Function or Use**

**Historic Functions**  
 (Enter categories from instructions.)

Industry/Processing/ Extraction/extractive facility  
 Granite Quarry

**Current Functions**  
 (Enter categories from instructions.)

Vacant

**7. Description**

**Architectural Classification**  
 (Enter categories from instructions.)

None

**Materials**  
 (Enter categories from instructions.)

foundation: Granite  
 walls: Wood, Oregon Fir  
 roof: Corrugated metal  
 other:

California Granite Company

Placer, CA

Name of Property

County and State

---

### Narrative Description

(Describe the historic and current physical appearance of the property. Explain contributing and noncontributing resources if necessary. Begin with a **summary paragraph** that briefly describes the general characteristics of the property, such as its location, setting, size, and significant features.)

#### Summary Paragraph

The California Granite Company is a 7.2 acre granite quarry located at 5255 Pacific Street in Rocklin California, an operational granite quarry since its inception in 1865 through 2005. The significant features of this historic site are one open granite quarry pit, two wooden sheds, one wooden office building, one derrick, one bridge crane, one reciprocating gang saw, one wire saw and a set of railroad tracks. Various pieces of granite remain strewn about the property along with various pieces of machinery from operations throughout the quarry's 150 year history.

This site is an industrial setting with small gray pines, oak trees and grasses surrounding the perimeter of the property.

Although some portions of the sheds have deteriorated and some structures are missing components, this site retains strong physical integrity to the historic period and appears almost identical to photographs taken in 1900.

---

### Narrative Description

#### Granite Quarry (Contributing)

The granite quarry (circa 1865) is 85 feet in depth and measures 500 feet long by 250 feet wide. It is an open pit from which granite slabs were mined and used for the construction of buildings and projects throughout the state of California. The granite quarry was first utilized in 1865. This resource appears identical to photographs taken 100 years ago and retains a very strong level of historic integrity, remaining approximately in the same condition it was left when the last granite was extracted from the site. It is a contributing resource.

#### Derrick (Contributing)

The derrick (ca 1880) is 65 feet in height and it stands immediately adjacent to the west side of the quarry along with its pulleys and cables still attached. The two arms of this derrick, which was used to hoist tons of granite slabs from the quarry, are made from wood with metal cables fastened to it at several locations along each pole with metal hardware. There are also seven wire cables, each 300 feet in length, attached to the top of the derrick and anchored to the ground at strategic points around the bottom of the derrick's center pole. These 300 foot long cables are used to keep the derrick upright. This contributing resource maintains a strong level of historic integrity to the historic period.

#### Cutting Shed (Contributing)

This is a one story rectangular shed used for cutting the large slabs of granite into smaller blocks. It is situated fifty feet southwest of the derrick and adjacent to the west side of the quarry. The cutting shed (ca 1900) is made from Oregon fir and measures 18 feet by 70 feet standing 26 feet in height at its peak with a corrugated metal roof attached.

#### Monument Shed (Contributing)

The Monument shed (ca 1907) is also a one story rectangular shed made of Oregon fir standing 36 feet at its highest peak. It originally measured 49 feet by 175 feet however, the existing structure now measures only 49 feet by 70 feet as a portion of this shed was lost due to deterioration. The corrugated metal roof is attached at some locations and missing in other areas. It is situated adjacent to the south side of the cutting shed on the west side of the quarry. This shed was used for chiseling and finishing the granite blocks into the final product which was then shipped to the customer.

(See continuation sheet)

**United States Department of the Interior**  
National Park Service

**National Register of Historic Places**  
**Continuation Sheet**

California Granite Company
Name of Property
Placer, California
County and State
Name of multiple listing (if applicable)

Section number   7   Page     1    

**DESCRIPTION**

Gang Saw (Contributing)

Located inside the cutting shed is the original reciprocating gang saw which was used to cut large slabs of granite into smaller pieces. This saw, including its six 16 ft. blades and eccentric drive equipment measures 50 feet in length and is made of steel. It works on the rectilinear long run motion for cutting granite blocks. The stone blocks rest in the blade rack and the friction of the segments in both directions by means of reciprocating motion facilitates the cutting of the block. To ensure perfect rectilinear movement of the blade rack, double connecting rods are attached at both ends of blade rack. Currently, the main support frame for the saw is the only remaining part. Although it appears rusted and some of the parts are missing, this structure is still largely intact and is a contributing resource.

Bridge Crane (Contributing)

The bridge crane (ca 1907) is made of metal with a wooden truss system to support its massive frame. This bridge crane is currently mounted 19 feet overhead inside the monument shed exactly as it was 100 years ago. This massive structure measures 175 feet in length (the original length of the monument shed) and was used for lifting and moving blocks of granite to work stations throughout the shed. Tables called "bankers" were set up throughout the monument shed and as the stone blocks would come in, the bridge crane would pick up a large block of granite and set it on your banker where it would be chiseled or hammered into what ever piece was being fabricated. Although this resource shows some rust, it maintains a strong level of historic integrity and is a contributing resource.

Railroad Tracks (Contributing)

Railroad tracks (originally installed ca 1865) leading from the derrick into the cutting shed are visible as are railroad tracks exiting the shed. Some railroad cars carried granite slabs from the derrick into the cutting shed while other railroad cars were used for transportation of the finished granite product to its destination via the Central Pacific rail line. Tracks and ties have been replaced over time but were replaced in kind and were utilized throughout the period of significance, and thus are a contributing resource.

Office Building (Contributing)

Situated 30 feet south of the monument shed is a one story, wooden building with a granite base (ca 1890) measuring 16 feet by 25 feet, standing 14 feet high. This building served as an office for the quarry during its historic period and it maintains strong historical integrity. This is considered a contributing resource.

Wire Saw (Non-Contributing)

A wire saw remains inside the cutting shed and was added to the property in 1950 by Ruben Ruhkala, owner of the quarry from 1933 through 1977. In 1950 wire saw technology displaced that of the 1907 reciprocating gang saw for cutting large stone into relatively thin workable slabs. Ruben Ruhkala of Union Granite Co is credited with assembly of the 24 ft wide saw which stands 25 ft high at the side of the Monument Shed. Stone as large as 8 ft high, 12 ft wide and of various lengths was moved under the cutting wire on a cable-drawn railroad carriage. Cutting was by an abrasive slurry consisting of water & carborundum dust carried by an endless steel wire circulated on a system of huge pulleys. As cutting progressed the wire was lowered through the stone utilizing a second set of pulleys and cables.

**United States Department of the Interior**  
National Park Service

**National Register of Historic Places**  
**Continuation Sheet**

California Granite Company
Name of Property
Placer, California
County and State
Name of multiple listing (if applicable)

Section number   7   Page     2    

A remote auxiliary frame and idler pulley, located 50 to 100 ft from the main frame, was used to increase the length of the circulating wire which, in turn, increased the time between shutdowns required to replace worn wire. The wire saw is a non-contributing resource due to its installation after the end of the period of significance.

### Integrity

Despite several years of decline, the property retains strong integrity of location, design, setting, workmanship, feeling and association. Although integrity of materials has been somewhat diminished by the deterioration of the sheds' exteriors and rusting of the saws, these properties are industrial in nature and vernacular in design, intended for outdoor use and exposure to the elements, and retain integrity in other aspects. The sheds, derrick and saws have not been moved, and the property retains its original footprint and, as such, exhibits integrity of location. While operations at the California Granite Company have ceased with the mine permanently closing in 2005, the industrial setting of the property remains largely intact and the setting retains historical integrity to the period. The massive quarry pit dominates the site, defining the use and function of the remainder of the property.

This site retains the feeling and association to the historic period and conveys its significance through these aspects of integrity. Although the California Granite Company is no longer in operation, with none of the famed Rocklin mines remaining, this site stands in its original location and setting and can convey its historical role as a granite quarry that provided California with granite during its formative years of statehood. Comparing current conditions with those from the active mining period, this site retains strong physical association to the historic period and physically conveys the lasting local legacy of the granite mining period.

California Granite Company  
Name of Property

Placer, CA  
County and State

### 8. Statement of Significance

#### Applicable National Register Criteria

(Mark "x" in one or more boxes for the criteria qualifying the property for National Register listing.)

- A Property is associated with events that have made a significant contribution to the broad patterns of our history.
- B Property is associated with the lives of persons significant in our past.
- C Property embodies the distinctive characteristics of a type, period, or method of construction or represents the work of a master, or possesses high artistic values, or represents a significant and distinguishable entity whose components lack individual distinction.
- D Property has yielded, or is likely to yield, information important in prehistory or history.

#### Criteria Considerations

(Mark "x" in all the boxes that apply.) N/A

Property is:

- A Owned by a religious institution or used for religious purposes.
- B removed from its original location.
- C a birthplace or grave.
- D a cemetery.
- E a reconstructed building, object, or structure.
- F a commemorative property.
- G less than 50 years old or achieving significance within the past 50 years.

#### Areas of Significance

(Enter categories from instructions.)

Industry \_\_\_\_\_

Transportation \_\_\_\_\_

\_\_\_\_\_

\_\_\_\_\_

\_\_\_\_\_

#### Period of Significance

1865 - 1940 \_\_\_\_\_

\_\_\_\_\_

#### Significant Dates

1865 \_\_\_\_\_

\_\_\_\_\_

\_\_\_\_\_

#### Significant Person

(Complete only if Criterion B is marked above.)

N/A \_\_\_\_\_

#### Cultural Affiliation

N/A \_\_\_\_\_

\_\_\_\_\_

#### Architect/Builder

\_\_\_\_\_

\_\_\_\_\_

\_\_\_\_\_

#### Period of Significance (justification)

The period of significance extends from 1865, when the quarry was first established, to 1940, when the industry changed and demand significantly dropped. In 1940, the second to last quarry in Rocklin (Quinn Quarry) closed, leaving California Granite Company as the last operating granite quarry in Rocklin.

Criteria Considerations (explanation, if necessary) N/A

California Granite Company  
Name of Property

Placer, CA  
County and State

**Statement of Significance Summary Paragraph** (Provide a summary paragraph that includes level of significance and applicable criteria.)

The California Granite Company meets the National Register of Historic Places Criterion A at a local level of significance due to its association with the development of the city of Rocklin and the local granite mining industry. Rocklin granite mining operations dominated the region's economic and social development from early American settlement during the Gold Rush period to the industry's slow decline and demise in 2005. The railroad and the granite industry relied heavily on each other with the granite quarries supplying rip rap on which the railroad tracks were laid, and the railroad line provided the shipping method for the granite industry. California Granite was the largest quarry in Rocklin, with the most employees, and was the last functioning granite quarry in the city, in continuous operation from 1865 until 2005. The period of significance is from 1865-1940.

**Narrative Statement of Significance** (Provide at least one paragraph for each area of significance.)

(See Continuation Sheet)

**Developmental history/additional historic context information** (if appropriate)

(See Continuation Sheet)

California Granite Company  
Name of Property

Placer, CA  
County and State

## 9. Major Bibliographical References

**Bibliography** (Cite the books, articles, and other sources used in preparing this form.)

### Books

Barry-Schweyer, Carmel, *Rocklin*. San Francisco, CA: Arcadia Publishing, 2005.

California State Mining Bureau, *The Structural and Industrial Materials of California, Bulletin No. 38*, California State Mining Bureau, 1906

Davis, Leonard M., *Rocklin, Past, Present, Future*, Rocklin, CA: Rocklin Friends of the Library 1981

### Published Articles

"City to Demolish Big Gun Quarry Shed", *Placer Herald*, November 2011

"Town Built on Granite", *Rocklin Historical Society Newsletter*, n.d.

### Unpublished Sources

Rukhala, Roy, "History of Rocklin California" prepared for the Rocklin Historical Society, prepared by Roy Rukhala, former owner and operator of California Granite Company, 1974

Hebuck, Uno, "My Memories of Rocklin," unpublished manuscript at Rocklin History Museum.

### Websites

Rocklin Historical Society  
<http://www.rocklinhistory.org>

"Construction: A Tale of Two Stones", California State Capitol Museum Virtual Tour  
<http://capitolmuseum.ca.gov/virtualltour.aspx?Content1=1482&content2=1472&content3=362>

### Previous documentation on file (NPS):

- preliminary determination of individual listing (36 CFR 67 has been requested)
- previously listed in the National Register
- previously determined eligible by the National Register
- designated a National Historic Landmark
- recorded by Historic American Buildings Survey # \_\_\_\_\_
- recorded by Historic American Engineering Record # \_\_\_\_\_
- recorded by Historic American Landscape Survey # \_\_\_\_\_

### Primary location of additional data:

- State Historic Preservation Office
  - Other State agency
  - Federal agency
  - Local government
  - University
  - Other
- Name of repository: Rocklin Historical Society

Historic Resources Survey Number (if assigned): N/A



**United States Department of the Interior**  
 National Park Service

**National Register of Historic Places**  
**Continuation Sheet**

California Granite Company
Name of Property
Placer, California
County and State
Name of multiple listing (if applicable)

Section number   8   Page   1  

**Criterion A: California Granite Company and the Rocklin Granite Industry**

The California Granite Company is eligible for the National Register of Historic Places under Criterion A at the local level of significance for its association with the history of granite mining in Rocklin and the development of the City of Rocklin, California. California Granite Company was the largest granite quarry in the city of Rocklin, a city named after its quarrying industry and known as the "Granite City." The property's period of significance is from 1865 when the quarry was established until 1940 when it became the sole surviving quarry in the city of Rocklin.

California Granite Company was established in 1865 as Capitol Granite Company by S.D. Smith, on behalf of the Central Pacific Railroad. The business was purchased by John M. Taylor in 1884, and sold to John Mantyla in approximately 1890.

According to the *The Structural and Industrial Materials of California, Bulletin No. 38*, published by the California State Mining Bureau in 1906, there were fifteen quarries in operation in Rocklin with several remaining idle. Most employed between 3–10 men with the largest quarry, California Granite Company, employing between 33–50 men. The report goes on to say that California Granite Company's pit was the biggest at about 100 feet deep, 100 feet wide and 250 feet long. The rock from California Granite Company has a remarkably straight grain and regular cleavage. Curbing slabs, from 10 to 20 feet long, are split with surfaces almost as regular and even as those cut with saws. Numerous slabs up to 16 by 20 feet surface, and from 10 to 12 inches thick, have been removed from the quarry. These large slabs, like the smaller ones, are nearly all split from the ledge by use of plugs and feathers. The California Granite Company was also well equipped with machinery for handling and dressing the stone. California Granite Company also had large derricks and steam hoists, an overhead steam traveler in the cutting sheds, and several polishing and surfacing machines. Other quarries in the area did not have such equipment making California Granite Company the biggest and best in the area. During the peak years of the granite industry, California Granite Company employed as many as 100 workers.

The operator of the California Granite Company during the heyday of Rocklin's granite industry was Adolph Pernu, a native of Finland and a Rocklin resident from circa 1902 until he died in 1931. Pernu purchased the property from John Mantyla and organized the California Granite Company. Between 1907 and 1920, granite from this quarry was used to construct the San Francisco Hibernia Bank, the Coaling and Naval Station at Pearl Harbor, the Sacramento County Courthouse, the University of California Campanile Bell Tower at Berkeley, the Sacramento County Jail, Santa Barbara Post Office, and the Bank of Italy Building in San Francisco. Pernu mortgaged the property in 1929 and died in a fall in 1931 while supervising construction of stone bridges in Sequoia National Park. After Adolph Pernu's death, the property was sold to the Rukhala family, who operated the quarry until 1977. From 1977 until 1980 the property was owned by the Scapezzi family, and operated as the Big Gun Mining Company from 1980 until the quarry's closure in 2005, owned by Don Epperson.

California Granite Company was in operation from 1865 through 2005. Most of Rocklin's other quarries went out of business by 1880, yet California Granite Company remained in business for another 125 years. Even as late as 1973 California Granite Company was participating in the building of California's iconic buildings. In 1973 the crusher at California Granite Company crushed the quartz that was used for the floors in San Francisco's TransAmerica Pyramid, giving the floors their sparkle.

**United States Department of the Interior**  
National Park Service

**National Register of Historic Places**  
**Continuation Sheet**

California Granite Company
Name of Property
Placer, California
County and State
Name of multiple listing (if applicable)

Section number 8 Page 2

**Developmental history/additional historic context information**

The first reported use of granite from the vicinity of Rocklin was in 1855, utilized for the construction of Fort Mason in San Francisco. Due to the difficulties involved with transportation of granite from Rocklin to the nearest railroad at Folsom (the Sacramento Valley Railroad), Rocklin granite was not shipped very often until the arrival of the Central Pacific Railroad.

The Central Pacific Railroad arrived at Rocklin in May of 1864, and pushed on, arriving at Newcastle that same year. Rocklin granite was used in construction of the railroad. According to the *Sacramento Union* of March 28, 1864 the Central Pacific's first paid freight was three carloads of granite bound for a building project in San Francisco. A local newspaper reported that the town was "destined to become one of the best towns in Placer County."

With an industry, the town attracted many new immigrants, especially those with experience in the hard work and art of shaping stone to meet the needs of a new California. The U.S. census of 1870 credits Rocklin with 542 people but, with the increase in the number of granite quarries (more than 60 at one time or another) the population doubled to 1,050 residents by 1890. Rocklin's 1870 census shows that Rocklin's quarrymen of the 1860s and 1870s were predominantly Irish, possibly from families escaping the Irish potato famines of the 1840s. By 1900 Finns owned more than half of Rocklin's quarries and were prominent in Rocklin's politics, retail enterprises and social life. As the granite industry flourished, so did Rocklin's other businesses such saloons, hotels and blacksmithing. At the height of granite quarrying there were 22 saloons in Rocklin.

By 1880, at least six Rocklin quarries had shipped granite blocks for dozens of imposing granite structures, including the San Francisco Mint (1874) and San Francisco's Palace Hotel (1875). The industry shrunk to one quarry in the early 1880s as public projects dried up but a better economy and machine-powered quarrying technology brought the quarries to their peak of activity by 1895 when at least 12 quarries operated. The 1880s saw the arrival in Rocklin of a large population of Finns. By 1900 Finns owned more than half of the Rocklin's quarries and were dominant in Rocklin politics and social life.

By 1910 Rocklin quarries had supplied granite for several major projects in Nevada and Northern California, including the courthouses in Auburn, Reno and Sacramento. Today, some San Francisco streets are still lined with Rocklin granite curbing used to repair roads damaged in the 1906 earthquake.

But by 1915 cement-based concrete had begun to nudge granite from builders' plans and a stonecutters' strike that year closed all but two or three Rocklin operations permanently. In 1920, San Francisco's Bank of Italy building consumed Rocklin's last significant shipment of building stone.

Some quarries operated for just a few months, others for several decades. 61 quarry pits were eventually opened and abandoned. One was used as Rocklin's garbage dump for several years and later filled to underpin a new building. At least one lies under the westbound lanes of highway 80. Another is water-filled and beautifies a mobile home park landscape. Many are filled with runoff rainwater and debris and lie hidden by weeds in empty fields.

The California Granite Company supplied granite for many of the State's most important and iconic buildings. Rocklin City Hall and Placer County Courthouse were built from granite mined in the local quarries. Granite was so plentiful and the industry so influential that it was used for everything from the

United States Department of the Interior  
National Park Service

National Register of Historic Places  
Continuation Sheet

California Granite Company
Name of Property
Placer, California
County and State
Name of multiple listing (if applicable)

Section number   8   Page     3    

local city hall to the bridges on Joel Parker Whitney's famed Spring Valley Ranch. Mr. Whitney hired Chinese immigrants to build 24 arched granite bridges across his vast, 30,000 acre ranch located in present day Rocklin, Lincoln and Penryn. Twelve of these bridges spanned the distance from his home which was located in the Mansion Oaks neighborhood of current day Rocklin to down town Rocklin. Hence the name "Twelve Bridges Drive" located off Hwy. 65 in Lincoln, CA

Rocklin was born of the granite industry and so aptly named, "Rock" "lin" precisely because of the granite mining industry which dominated the area during the late 1800s. Granite quarrying was the most important industry in Placer County during that time proving steady, well-paying jobs for Irish immigrants and later Finnish immigrants. Rocklin granite mining was the lifeblood of the local economy bolstering local businesses such as the 22 saloons which were established at the height of its stone cutting years.

During the 1800s, California was in its infancy and needed to construct infrastructure and government building so the State could conduct official business. During this construction period, Rocklin granite was used to build the ground level of the State Capitol in Sacramento which was completed in 1874. Rocklin granite not only supplied a sturdy base on which to build the upper levels of the State Capitol, it conveyed a sense of permanency and stability that the State of California was seeking at that time. Prior to settling in Sacramento, California's governmental offices moved six times. Without a good supply of high quality, even colored granite, California would not have been able to construct our most important public buildings.

The construction of San Francisco City Hall, which was built with Rocklin granite, was an important milestone in California's history as it provided the citizens with an important governmental building from which the City could conduct business and serve its ever growing population. Numerous public and private buildings in San Francisco were built with Rocklin Granite which provided places for California's citizens to conduct business and socialize. Some of the more notable places were the Palace Hotel, Bank of Italy and the Wells Fargo Bank. Without these centers of commerce and entertainment, California would not have been able to grow and prosper at the rate with which it did.

As the State of California grew and its citizens required more services, other county governments utilized Rocklin's granite in the construction of their buildings, as well. Noteworthy, as well, were Solano County Court House (1911), Sacramento City Hall (1911) and Sacramento City and County jails.

The building of California's railroad infrastructure also required massive amounts of granite, with California Granite Company supplying a large part of it. Thousands of tons of granite were used in the Sacramento River levee system as Sacramento attempted to deal with flooding in the early days. Tons of small granite blocks known as "rip rap" were used in the building of the Central Pacific Railroad as fill on which the tracks were laid. Granite also supplied the building blocks for the tunnels as the railroad building progressed upward from Sacramento toward the Sierras. The railroad was dependent upon the Rocklin granite industry and Rocklin was dependent upon the railroad to ship its granite throughout California. Finally, much of San Francisco's streets and curbing, still visible today, were made from Rocklin's granite.

California Granite Company is also associated with the construction of federal buildings and military installations on the west coast. As the U.S. Army Corps of Engineers began work on Fort Point in

**United States Department of the Interior**  
National Park Service

**National Register of Historic Places**  
**Continuation Sheet**

California Granite Company
Name of Property
Placer, California
County and State
Name of multiple listing (if applicable)

Section number   8   Page   4  

1853, one of the first loads of granite shipped from Rocklin in 1855 went to this military installation in San Francisco. The Fort has been called "the pride of the Pacific," "the Gibraltar of the West Coast," and "one of the most perfect models of masonry in America. This resource is registered with the National Register of Historic Places.

The old U.S. Mint which opened in 1874 and located at 88 Fifth Street in San Francisco is affectionately known as "The Granite Lady" because of the superb quality of Rocklin granite utilized in the building of the basement of this historic structure. The building sat on a concrete and granite foundation, designed to thwart tunneling into its vaults, which at the time of the 1906 fire held \$300 million, fully a third of the United States' gold reserves. This resource is designated as a National Historic Landmark.

After the Civil War, the reach of the U.S. Navy extended to the Pacific, and with it came the construction of dry docks at Mare Island (ca 1895) and Pearl Harbor (ca 1910). Once again, Rocklin's granite was used in the construction of these historic, U.S. military installations.

The granite in the Rocklin Pluton is 128 million years old but it was exposed at the earth's surface in just the last two or three million years. It is for that reason that the granite appears fresh, is not deeply weathered and it has retained many of its original qualities with respect to hardness, glitter, brilliance and color. Beginning in 1848 the Gold Rush brought sudden, profound change when miners went through this area on their way to Auburn to find gold. They mined all the creeks in the area and when the gold ran out, the Irish landed in Rocklin. Some of them remained in Rocklin and began working on the railroad or opened up quarries. The rock was on top of the ground and exposed facilitating the opening of the first granite operations in 1855.

California Granite Company  
Name of Property

Placer, CA  
County and State

**10. Geographical Data**

**Acreage of Property** 7.2 acres  
(Do not include previously listed resource acreage.)

**UTM References**

(Place additional UTM references on a continuation sheet.)

1	<u>10</u>	<u>653000</u>	<u>4295000</u>	3	<u>10</u>	<u>653560</u>	<u>4294440</u>
	Zone	Easting	Northing		Zone	Easting	Northing
2	<u>10</u>	<u>653560</u>	<u>4295000</u>	4	<u>10</u>	<u>653000</u>	<u>429440</u>
	Zone	Easting	Northing		Zone	Easting	Northing

**Verbal Boundary Description** (Describe the boundaries of the property.)

This site is listed on Placer County Assessor Map, Parcel Number 010-170-024-000. See attached parcel map.

**Boundary Justification** (Explain why the boundaries were selected.) The boundary is the original parcel boundary as it existed in 1867 and also the current parcel boundary as defined on the Placer County Parcel Map parcel number 010-170-024-000.

**11. Form Prepared By**

name/title Carol Ellis

organization Rocklin Heritage Committee date November 24, 2011

street & number 5290 Paragon St. telephone 916-838-7751

city or town Rocklin state CA zip code 95677

e-mail WellesleySmithe@gmail.com

California Granite Company  
Name of Property

Placer, CA  
County and State

---

**Additional Documentation**

---

Submit the following items with the completed form:

- **Maps:** A **USGS map** (7.5 or 15 minute series) indicating the property's location.  
A **Sketch map** for historic districts and properties having large acreage or numerous resources. Key all photographs to this map.
- **Continuation Sheets**
- **Additional items:** (Check with the SHPO or FPO for any additional items.)

---

**Photographs:**

---

Submit clear and descriptive photographs. The size of each image must be 1600x1200 pixels at 300 ppi (pixels per inch) or larger. Key all photographs to the sketch map.

See Continuation Sheet

---

**Property Owner:**

---

(Complete this item at the request of the SHPO or FPO.)

name Rocklin Redevelopment Agency, Ricky Horst, Executive Director  
street & number 3970 Rocklin Road telephone 916-625-5560  
city or town Rocklin state CA zip code 95677

**Paperwork Reduction Act Statement:** This information is being collected for applications to the National Register of Historic Places to nominate properties for listing or determine eligibility for listing, to list properties, and to amend existing listings. Response to this request is required to obtain a benefit in accordance with the National Historic Preservation Act, as amended (16 U.S.C. 460 et seq.).

**Estimated Burden Statement:** Public reporting burden for this form is estimated to average 18 hours per response including time for reviewing instructions, gathering and maintaining data, and completing and reviewing the form. Direct comments regarding this burden estimate or any aspect of this form to the Office of Planning and Performance Management, U.S. Dept. of the Interior, 1849 C. Street, NW, Washington, DC.

**United States Department of the Interior**  
National Park Service

**National Register of Historic Places**  
**Continuation Sheet**

California Granite Company
Name of Property
Placer, CA
County and State
Name of multiple listing (if applicable)

Section number Photograph Log Page 1

Name of Property: California Granite Company  
 City or Vicinity: Rocklin  
 County: Placer  
 State: CA  
 Name of Photographer: Carol Ellis  
 Date of Photographs: November 2011  
 Location of Original Data Files: 5290 Paragon Street, Rocklin, CA 95677

Above information applicable to photographs listed below:

Photo #1

Sheds, east elevation, camera facing west

Photo #2

Sheds, north elevation, camera facing south

Photo #3

Sheds, south elevation, camera facing north

Photo #4

Derrick

Photo #5

Reciprocating gang saw

Photo #6

Office, West elevation, camera facing east

Photo #7

Overhead bridge crane, view 1

Photo #8

Overhead bridge crane, view 2

United States Department of the Interior  
National Park Service

**National Register of Historic Places  
Continuation Sheet**

California Granite Company
Name of Property
Placer, California
County and State
Name of multiple listing (if applicable)

Section number Additional Documentation

Page 1

**Figure Log**

Figure 1: Historical photograph (ca 1900) showing north elevation of cutting shed and monument shed with derrick and granite quarry in foreground.

Figure 2: Historical photograph (ca 1900) depicting two granite workers standing on top of bridge crane with two workers standing below as granite slab is hoisted inside monument shed.

Figure 3: Historical photograph (ca 1900) depicting granite workers chiseling granite slabs beside granite quarry with derrick and rail car in background.

Figure 4: Sketch Map

Figure 5: Detailed Footprint of Site showing portion of Monument Shed that was lost due to deterioration.

Figure 6: Placer County Assessor Parcel Map referencing California Granite Company parcel in center, 7.2 acres.

Figure 7: Historical Map referencing California Granite Company (shown as 1. John Taylor)



United States Department of the Interior  
National Park Service

National Register of Historic Places  
Continuation Sheet

California Granite Company

Name of Property

Placer, California

County and State

Name of multiple listing (if applicable)

Section number Additional Documentation

Page 2



Figure 1: Historic photograph (ca 1900) showing north elevation of cutting shed and monument shed with derrick and granite quarry in foreground.

United States Department of the Interior  
National Park Service

National Register of Historic Places  
Continuation Sheet

California Granite Company
Name of Property
Placer, California
County and State
Name of multiple listing (if applicable)

Section number Additional Documentation

Page 3

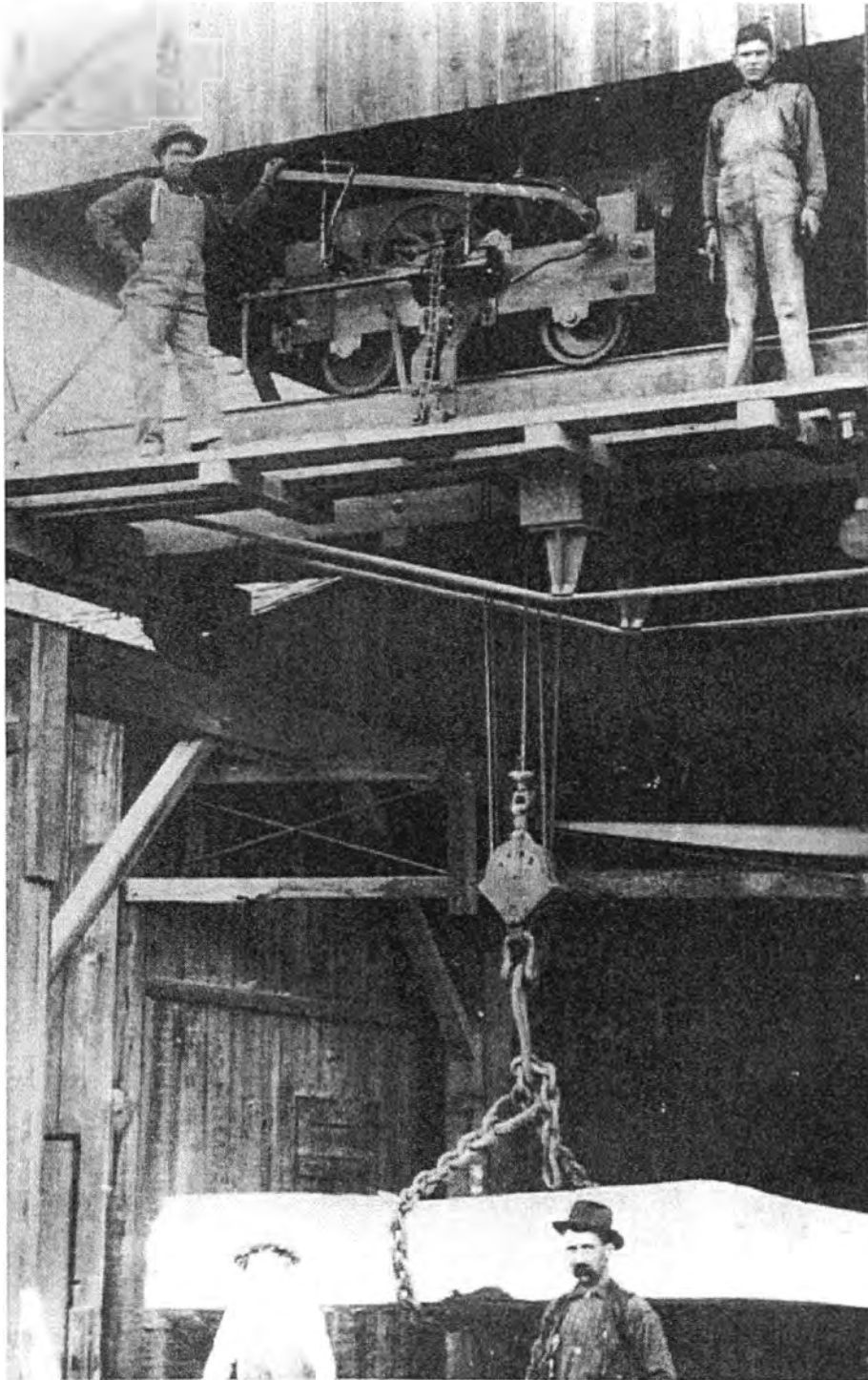


Figure 2: Historic photograph (ca 1900) depicting two granite workers standing on top of bridge crane with two workers standing below as granite slab is hoisted inside monument shed.

United States Department of the Interior  
National Park Service

National Register of Historic Places  
Continuation Sheet

California Granite Company

Name of Property

Placer, California

County and State

Name of multiple listing (if applicable)

Section number Additional Documentation

Page 4

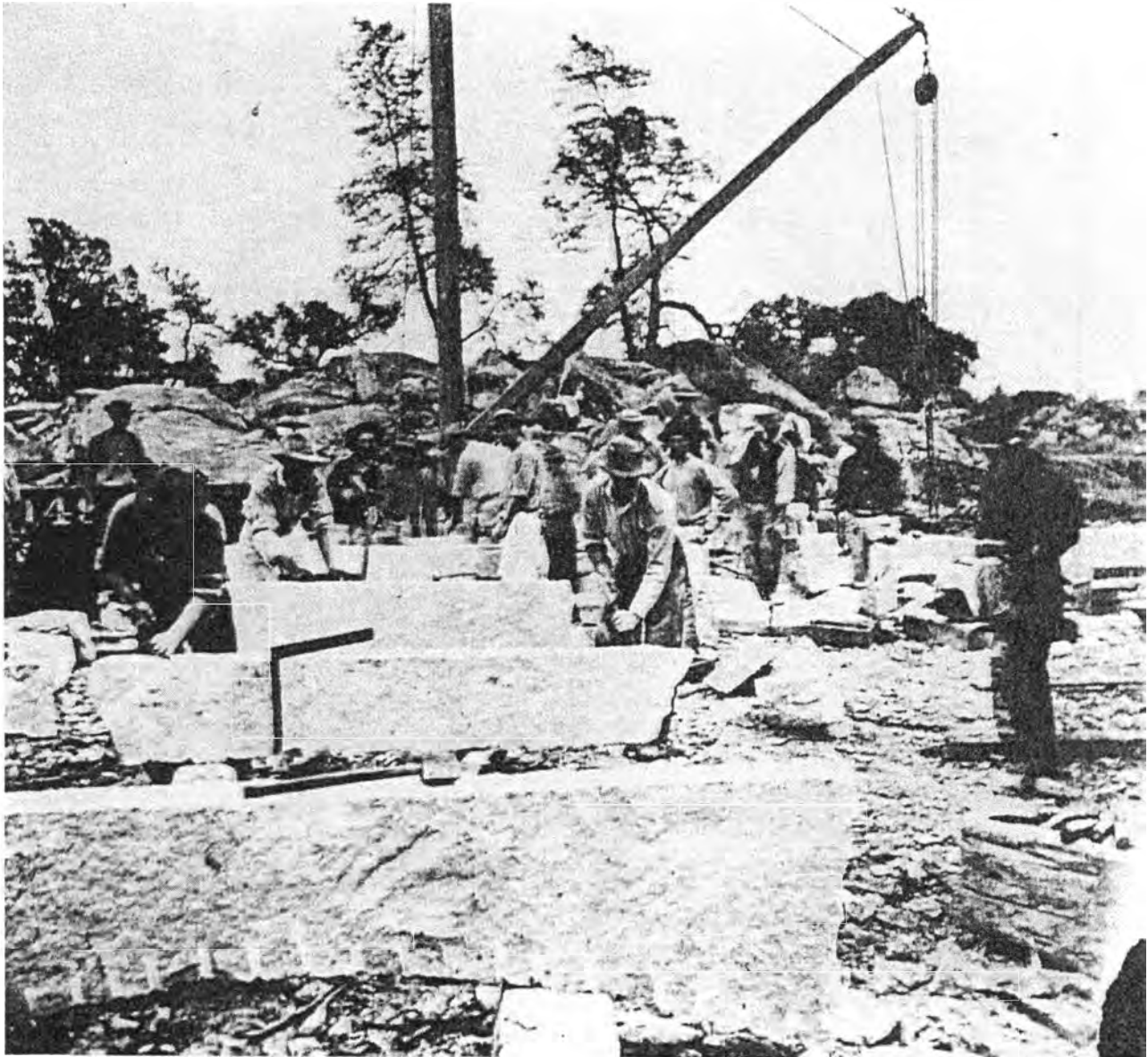


Figure 3: Historic photograph (ca 1900) depicting granite workers chiseling granite slabs beside granite quarry with derrick and rail car in background.

United States Department of the Interior  
National Park Service

National Register of Historic Places  
Continuation Sheet

California Granite Company
Name of Property
Placer, California
County and State
Name of multiple listing (if applicable)

Section number Additional Documentation

Page 5

California Granite Company located at 5255 Pacific Street, Rocklin, CA

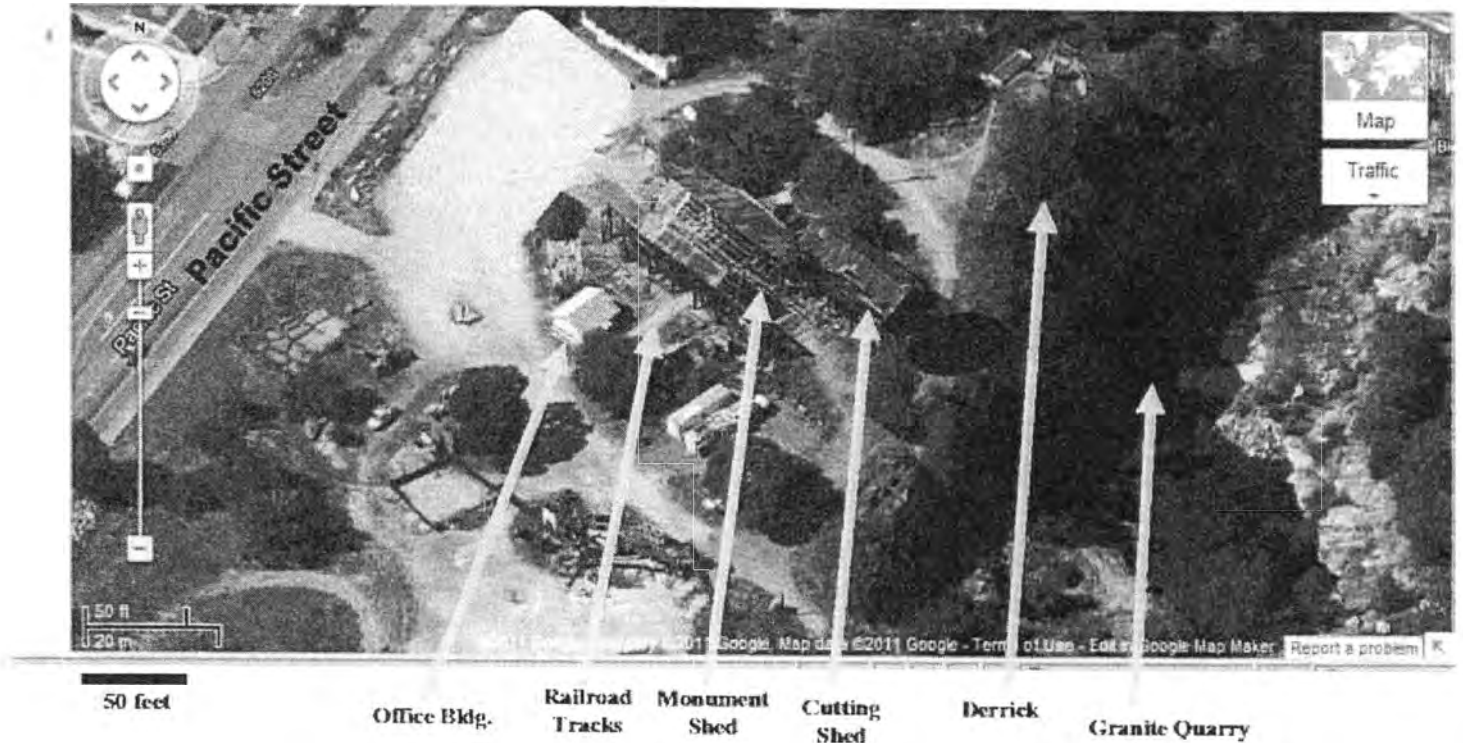


Figure 4: Sketch Map (Google Maps)

United States Department of the Interior  
National Park Service

National Register of Historic Places  
Continuation Sheet

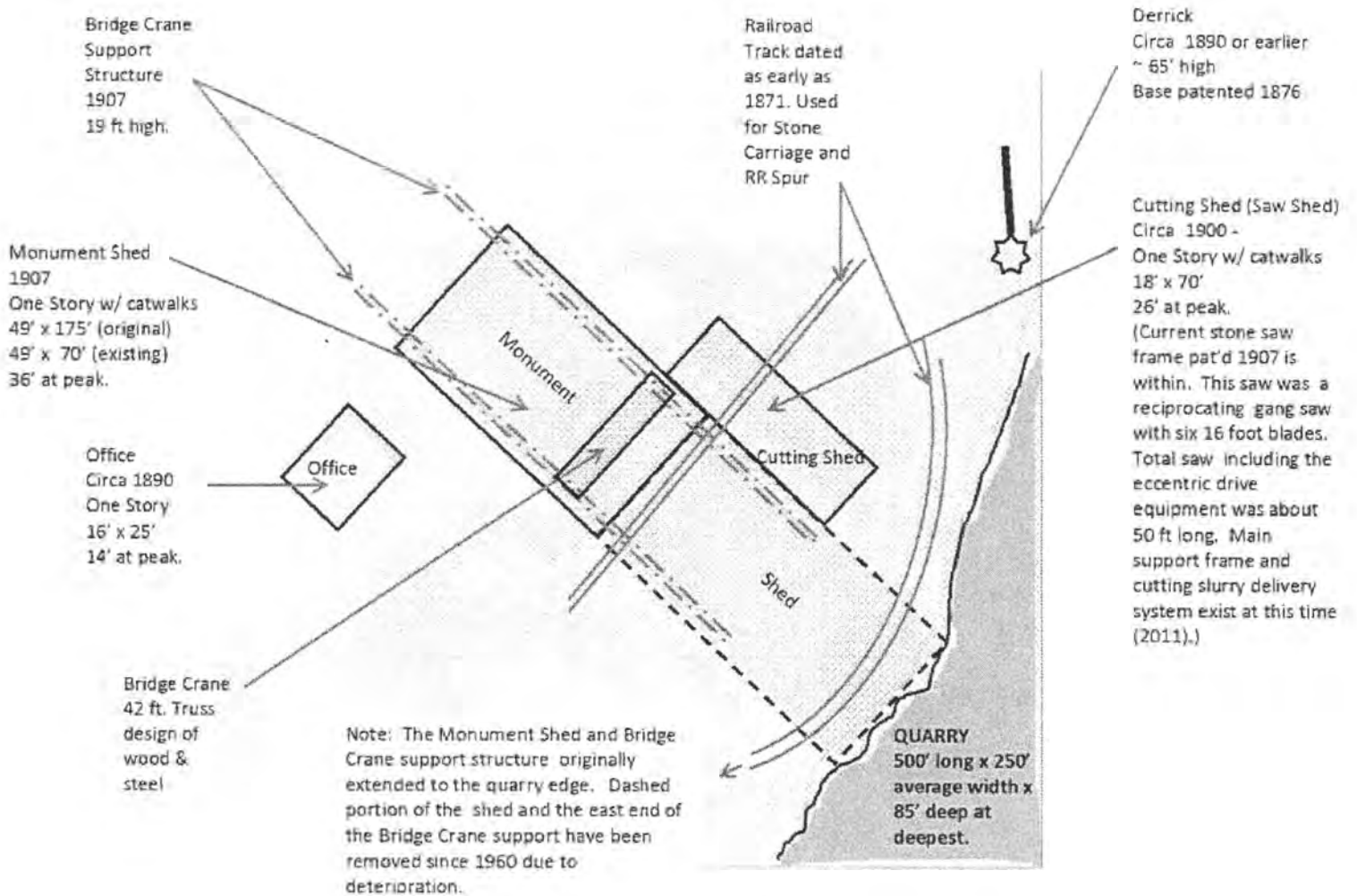
California Granite Company

Name of Property  
Placer, California  
County and State

Name of multiple listing (if applicable)

Section number Additional Documentation

Page 6



### California Granite Company 1907

Rev 2011-11-JO

Figure 5: Detailed Footprint of Site showing portion of Monument Shed that was lost due to deterioration.

United States Department of the Interior  
National Park Service

National Register of Historic Places  
Continuation Sheet

California Granite Company
Name of Property
Placer, California
County and State
Name of multiple listing (if applicable)

Section number Additional Documentation

Page 7

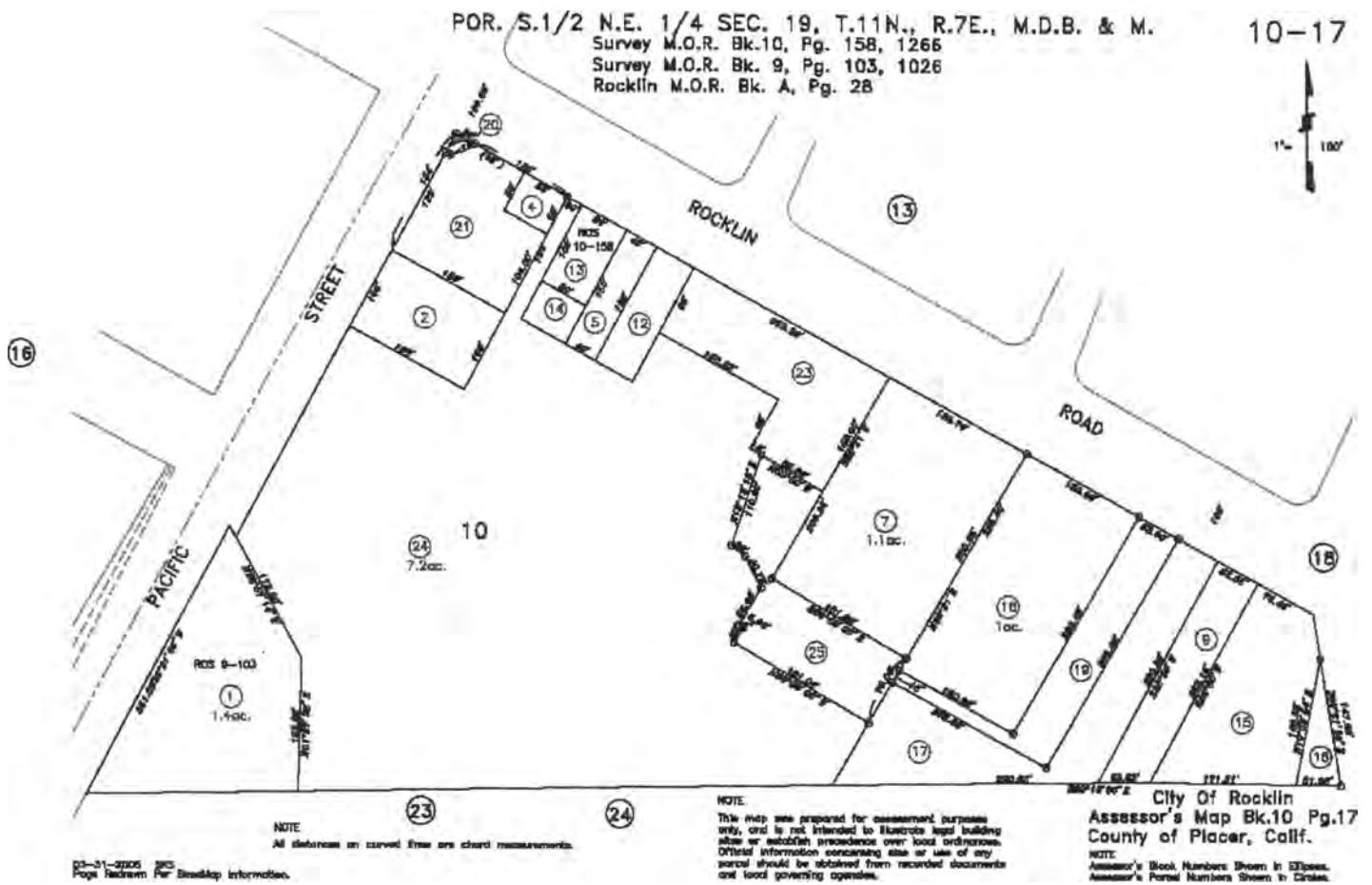


Figure 6: Placer County Assessor Parcel Map referencing California Granite Company parcel in center, 7.2 acres.

United States Department of the Interior  
National Park Service

National Register of Historic Places  
Continuation Sheet

California Granite Company

Name of Property

Placer, California

County and State

Name of multiple listing (if applicable)

Section number Additional Documentation

Page 8

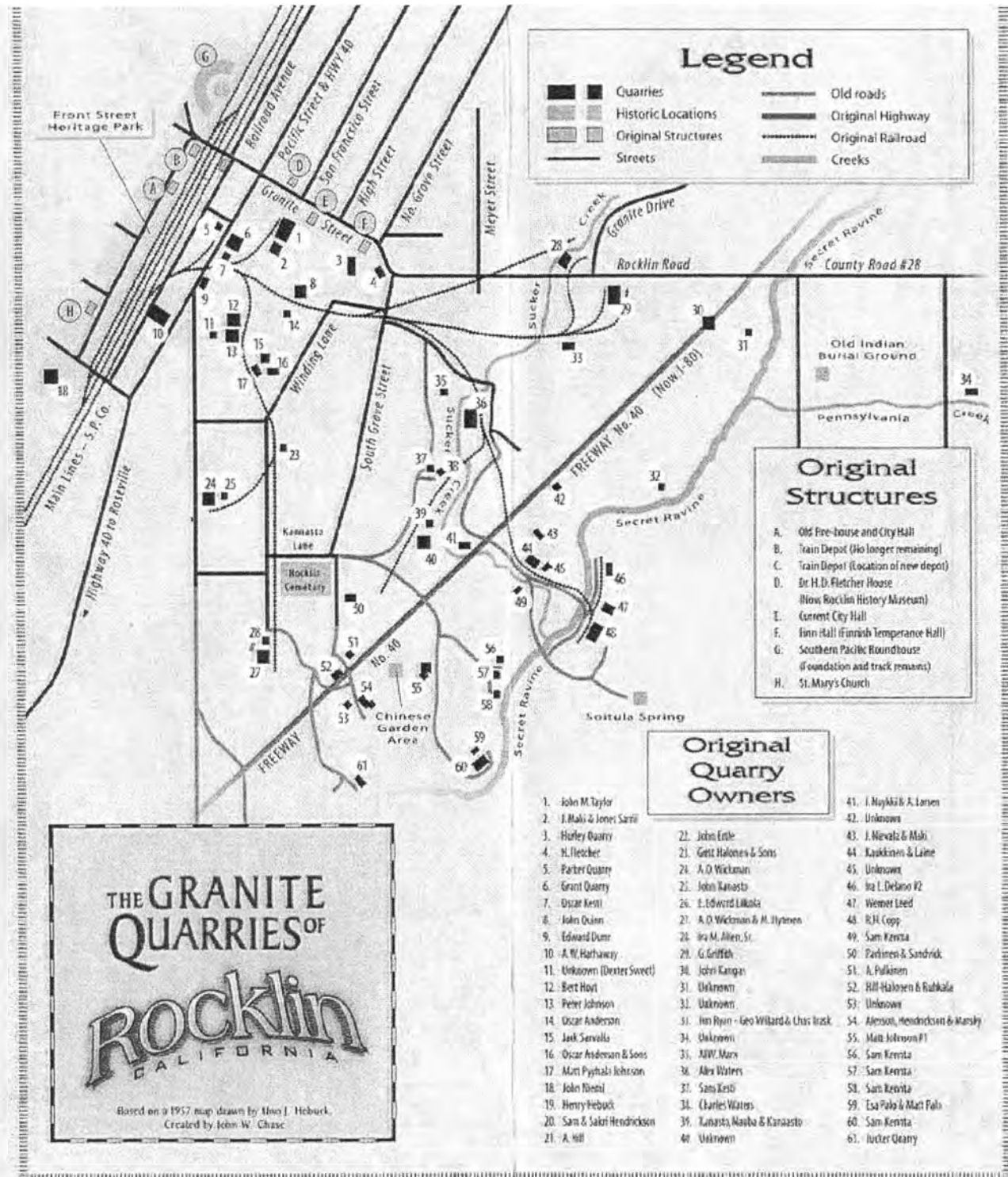


Figure 7: Historical Map referencing California Granite Company (shown as 1. John Taylor)

United States Department of the Interior  
National Park Service

NATIONAL REGISTER OF HISTORIC PLACES  
CONTINUATION SHEET

Section \_\_\_\_\_ Page \_\_\_\_\_

=====

SUPPLEMENTARY LISTING RECORD

NRIS Reference Number: 12000375

Date Listed: 7/3/2012

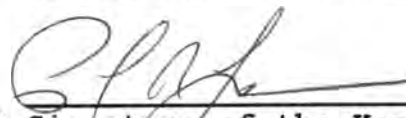
California Granite Company  
Property Name

Placer      CA  
County      State

N/A  
Multiple Name

-----

This property is listed in the National Register of Historic Places in accordance with the attached nomination documentation subject to the following exceptions, exclusions, or amendments, notwithstanding the National Park Service certification included in the nomination documentation.

  
\_\_\_\_\_  
Signature of the Keeper

7/3/12  
\_\_\_\_\_  
Date of Action

-----

Amended Items in Nomination:

**Classification:**

The appropriate Category of Property is: *district*.  
[Generally properties that contain a substantial concentration of resources of varying types (sites, buildings, structures, etc.) are classified as districts. An isolated quarry might be termed a site, but an industrial complex such as the granite company is best classified as a district.]

**Significance:**

The Area of Significance *Transportation* is deleted. *Industry* is retained.  
The primary significance of this property lies in its use as an industrial site important in the historic development of the community of Rocklin and the region. While materials from the quarry were reportedly used in regional transportation projects, the context and development of this particular theme is rather limited. The majority of the nomination speaks instead of the local significance of the quarrying industry to community growth and economic development, and the various historic buildings throughout the state built using local granite. While the railroad and quarrying industries shared a mutually beneficial relationship the rather tangential connection would need to be substantially documented in order to merit consideration.

These clarifications were confirmed with the CA SHPO office.

-----

**DISTRIBUTION:**

National Register property file  
Nominating Authority (without nomination attachment)



UNITED STATES DEPARTMENT OF THE INTERIOR  
NATIONAL PARK SERVICE

NATIONAL REGISTER OF HISTORIC PLACES  
EVALUATION/RETURN SHEET

REQUESTED ACTION: NOMINATION

PROPERTY California Granite Company  
NAME:

MULTIPLE  
NAME:

STATE & COUNTY: CALIFORNIA, Placer

DATE RECEIVED: 5/18/12 DATE OF PENDING LIST: 6/13/12  
DATE OF 16TH DAY: 6/28/12 DATE OF 45TH DAY: 7/04/12  
DATE OF WEEKLY LIST:

REFERENCE NUMBER: 12000375

REASONS FOR REVIEW:

APPEAL: N DATA PROBLEM: N LANDSCAPE: N LESS THAN 50 YEARS: N  
OTHER: N PDIL: N PERIOD: N PROGRAM UNAPPROVED: N  
REQUEST: N SAMPLE: N SLR DRAFT: N NATIONAL: N

COMMENT WAIVER: N

\_\_\_ ACCEPT \_\_\_ RETURN \_\_\_ REJECT \_\_\_\_\_ DATE

ABSTRACT/SUMMARY COMMENTS:

**The California Granite Company is locally significant under National Register Criterion A in the area of Industry for its association with historic development of granite quarrying in the city of Rocklin. Once known as the "Granite Capital of the West," the community of Rocklin at various times hosted of over 65 operating quarries during the late nineteenth and early twentieth centuries. The California Granite Company operation was the largest operation of its kind in the city and the last to remain open. The extant features, although deteriorated, reflect the best remaining illustrations of this once dominant local industry.**

RECOM./CRITERIA Accept Criterion A

REVIEWER PAUL R. LUSIGNAW DISCIPLINE HISTORIAN

TELEPHONE \_\_\_\_\_ DATE 7/3/2012

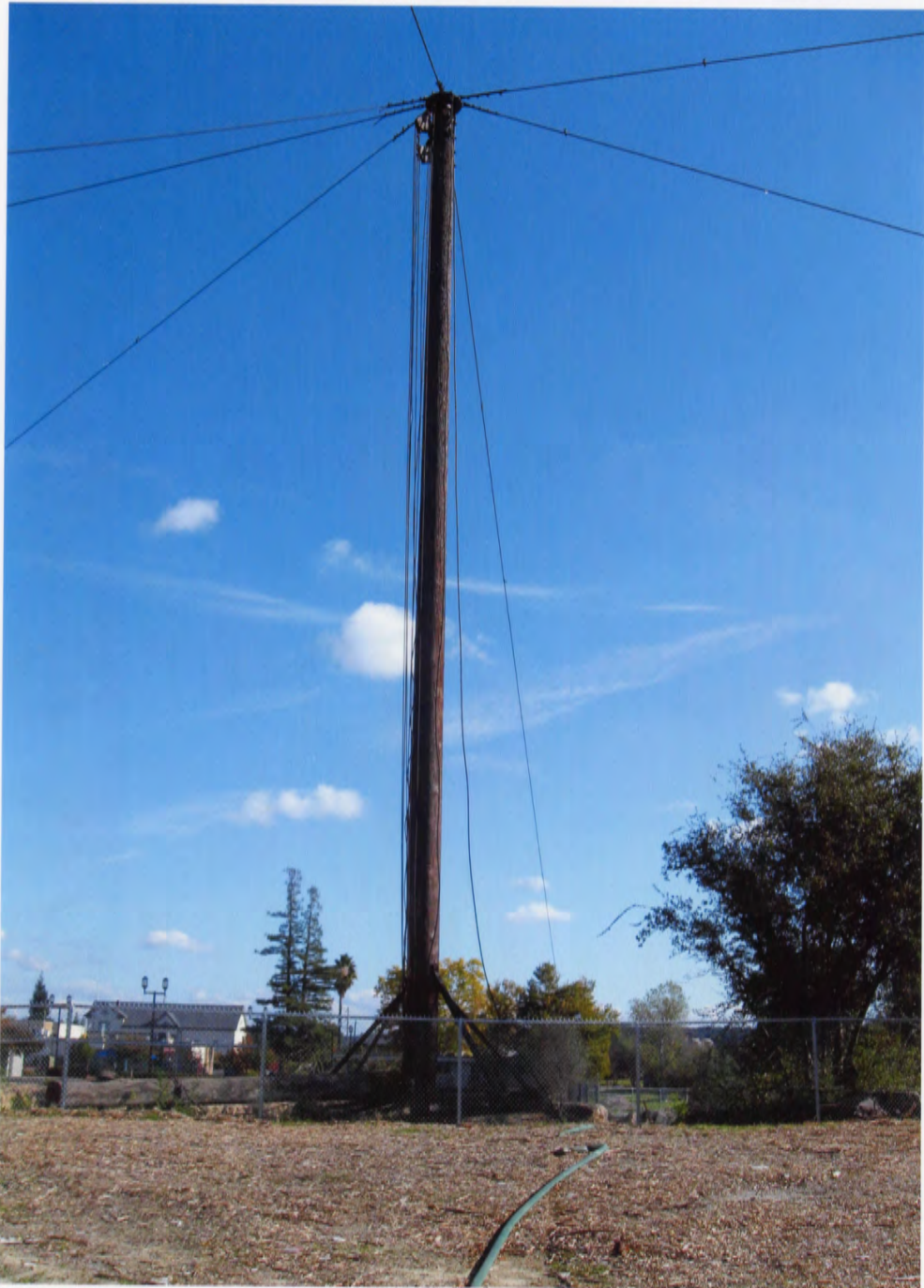
DOCUMENTATION see attached comments Y/N see attached SLR Y/N

If a nomination is returned to the nominating authority, the nomination is no longer under consideration by the NPS.



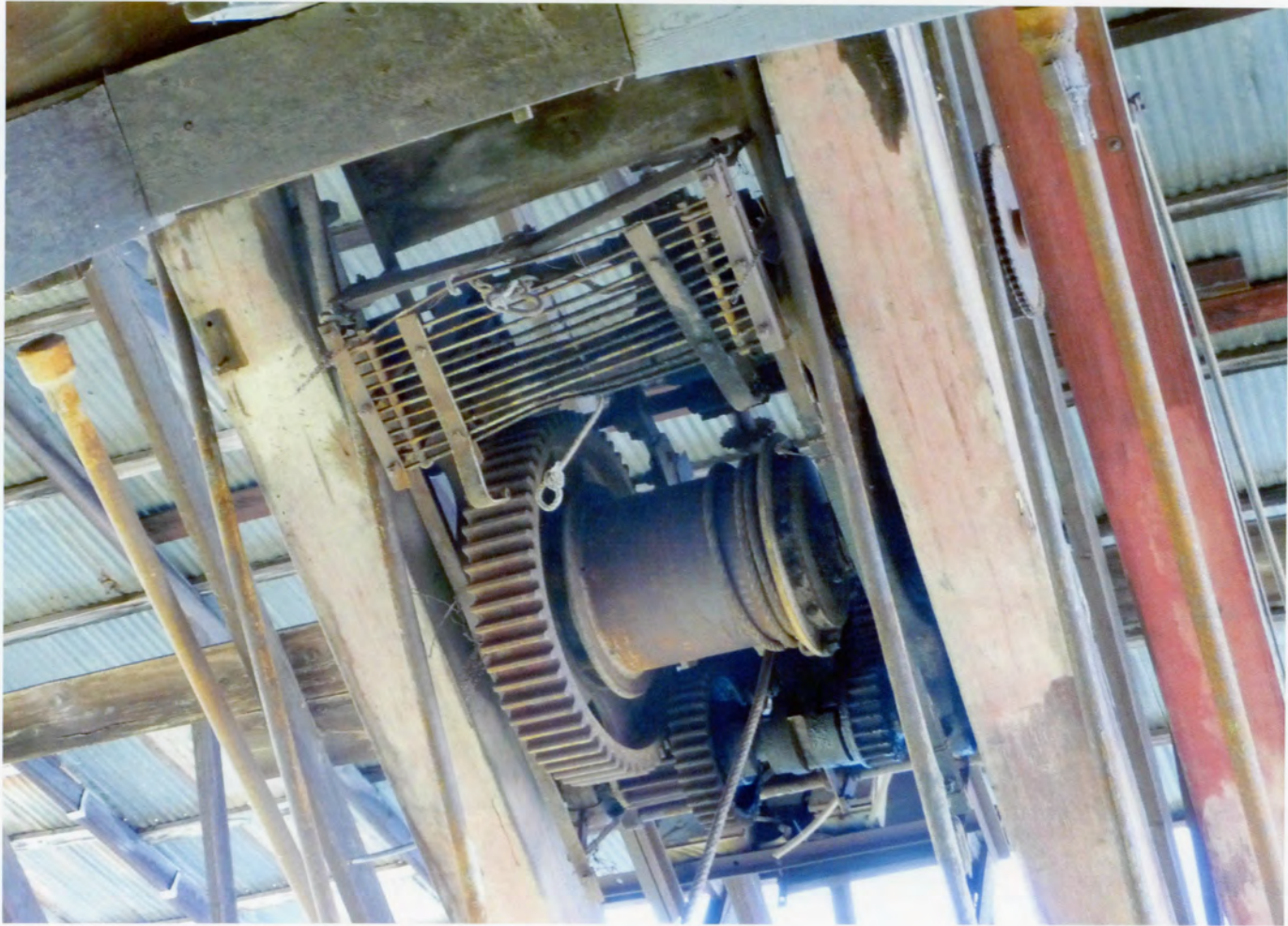


















CALIFORNIA  
GRANITE  
COMPANY  
ROCKLIN,  
PLACER COUNTY  
CALIFORNIA  
ZONE 10

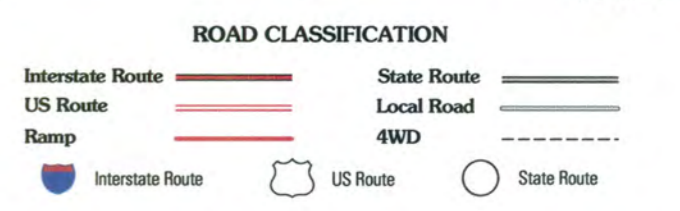
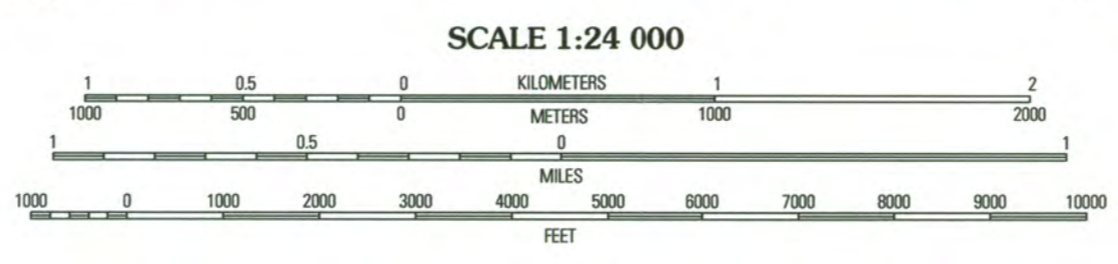
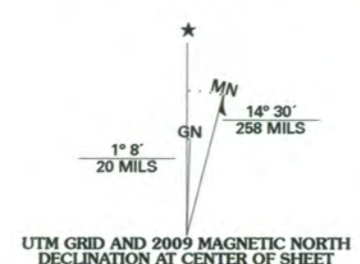
1. 653000 ME  
4295000 MN

2. 653560 ME  
4295000 MN

3. 653560 ME  
4294440 MN

4. 653000 ME  
4294440 MN

Produced by the United States Geological Survey  
North American Datum of 1983 (NAD83)  
World Geodetic System of 1984 (WGS84). Projection and  
1:000-meter grid: Universal Transverse Mercator, Zone 10S  
10 000-foot ticks: California Coordinate System of 1983  
(zone 2)



QUADRANGLE LOCATION

Lincoln	Gold Hill	Auburn
Roseville	Rocklin	Pilot Hill
Citrus Heights	Folsom	Clarkville

ADJOINING 7.5' QUADRANGLES

Imagery.....NAIP, June 2005  
Roads.....National Transportation Dataset, 2008  
Names.....GNIS, 2008

U.S. National Grid 300,000-m Square ID
FJ 49
Grid Zone Designation 10S

This map was produced to conform with version 0.0.25 of the  
draft USGS Standards for 7.5-Minute Quadrangle Maps.  
A metadata file associated with this product is also draft version 0.0.25

**ROCKLIN, CA**  
2009

January 15, 2012



Office of Historic Preservation  
Post Office Box 942896  
Sacramento, CA 94296-0001

As a resident of Rocklin, Placer County, California, I strongly support the Rocklin Heritage Committee's application of the Big Gun Quarry for placement on the National Register of Historic Places.

Enclosed is a copy of the newspaper article from The Placer Herald about the designation of the Big Gun Quarry.

Sincerely,

Sandra J. Elder  
5037 Southside Ranch Road  
Rocklin, CA 95677  
(916) 632-9396  
[historylandmark@yahoo.com](mailto:historylandmark@yahoo.com)

enclosure

# City balks at historical registry for Big Gun Quarry

Rocklin opposes nomination to the National Register of Historic Places for granite mining site

BY JON BRINES

PLACER HERALD CORRESPONDENT

Controversy continues in the public battle over the preservation of the Big Gun Quarry on Pacific Street.

On Dec. 19, the Rocklin Heritage Committee nominated the quarry site under the California Granite Company designation for the National Registry of Historic Places.

Heritage Committee spokesperson Carol Ellis said getting the property listed is important to the community.

"The name, Rocklin, comes

## YAY OR NAY?

### DO YOU SUPPORT OR OPPOSE HISTORIC REGISTRY OF BIG GUN QUARRY?

#### Write:

California Granite Company  
Nomination  
California Office of Historic  
Preservation  
P.O. Box 942896  
Sacramento, CA 94296-0001

from our granite mining history," Ellis said. "It is the reason this town exists and it is important to save this unique piece of history for future generations."

The city council approved a demolition order on the century old work sheds in September,

citing potential safety concerns.

However, a review of police records by the Placer Herald found no reports of trespassing on the quarry site since the city took ownership in 2010. The city has also placed a chain link fence around the site.

The prestigious label by the National Parks is mostly honorific, and does not support claims against private owners interested in changing original structures, including demolition, reports Jay Correia, a historian at the California State Office of Historic Preservation.

"The only thing listing it in the National Register would do is ensure the building is treated

• SEE QUARRY PAGE A12



According to historians, granite for the and stone processed to build the Trans in San Francisco came from the Big Street.

## LOOK WHAT'S INSIDE

Calendar	A2	Obit	A6	Sports	A13
Opinion	A4	Movie Listings	A3	Classified	B1

### CALL US:

For guaranteed delivery of the Placer Herald every week, please call 774-7900

**VOLUME 158,  
NUMBER 1**

## QUARRY: Nomination goes before commission in May

continued from A1

as a historical property in their environmental review analysis," Correia said. "It doesn't mean they can't tear it down. It just means they'll have to discuss the impacts of tearing it down."

That's exactly what the Heritage Committee wanted when it threatened a lawsuit in October against the city over what they deemed the city's lack of environmental review.

That same month, the city agreed to conduct an environmental review, which includes evaluating its historical nature.

The Rocklin Historical Society considers the site the only remaining work buildings representing 150 years of granite mining in the city. The quarry work sheds processed stone for the State Capitol building as well as the iconic Transamerica building in San Francisco and other California landmarks.

Mayor Brett Storey said the city, as the property owner through the Rocklin Redevelopment Agency, opposes the nomination.

"The designation of a national historical site is potentially crippling to any normal sense of development," Storey said.

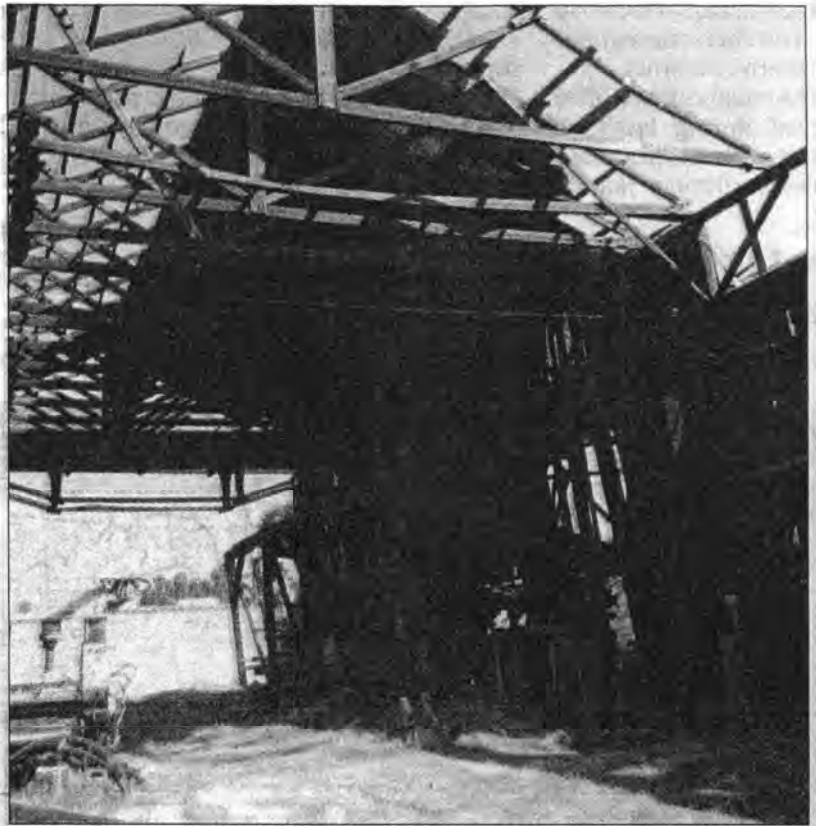
He noted the designation would severely limit the potential the site may have for creating a vibrant downtown.

"We purchased the land with the intent to have some development that would be complimentary to our history and place," Storey said. "We do not wish to have impositions to the idea of creating a landmark area."

Correia said the nomination comes without requirements, restrictions or prohibitions.

"It is the most misunderstood fact about the register," Correia said. "You could have the most historic property in Rocklin and just because it's on the National Register doesn't mean you couldn't tear it down tomorrow."

Ellis describes the Rocklin Heritage Committee as concerned Rocklin citizens — some of whom are also members of the Rocklin Historical Society. Their ultimate goal is to buy time to recruit a



JON BRINES • PLACER HERALD

The Heritage Committee, a local group of historians, has filed nomination papers to have the Big Gun Quarry on Pacific Street placed on the National Register of Historic Places. A California Supreme Court ruling upholding the state's plan to abolish redevelopment agencies statewide could force the city to sell the historic site.

developer or philanthropist who could transform the site into a tourist destination.

It's unclear if the city's opposition could block the registry when the quarry's nomination is heard before the State Historical Resources Commission in May.

"Technically, the California Commission is not supposed to take local government opposition into account. But they are a political commission," Correia said.

If approved, the nomination would go to Washington, DC for final approval.

Rocklin Heritage Committee member Elaine O'Deegan is concerned the city's posturing indicates they aren't doing enough to preserve the city's history.

"So if our city says they will reject this property from being placed in the National Register of Historic Places, what does that say

about our city's respect for the history of our town," O'Deegan said. "Our mayor's reaction is so telling and typical of the people we have representing us when it comes to preserving Rocklin's history."

Storey countered that opposing the registry is about keeping local control.

"No city or land owner in America would allow an outside organization to determine the limits on their land over and above the local regulations," Storey said.

Adding to the controversy is the law, upheld by the California Supreme Court last month that will dismantle the Rocklin Redevelopment Agency, which purchased the property for \$1 million in November 2010.

On Feb 1, a successor agency could legally be given control the property and then be forced to sell the property.

# ROCKLIN CHIROPRACTIC CLINIC

---

JAMES E. CARLSON, D.C.

5875 PACIFIC STREET, SUITE B1 • ROCKLIN, CALIFORNIA 95677 • 916-624-0682 • 916-624-1023 (FAX)



February 20, 2012

Jay Correia  
State Historian III  
Supervisor, Registration Unit  
California Office of Historic Preservation  
1725 – 23<sup>rd</sup> Street  
Sacramento, CA 95816

Re: California Granite Company Quarry

Dear Mr. Correia:

I support addition to the National Register of Historic Places of the California Granite Company (aka "Big Gun) Quarry located in Rocklin, California.

As a Rocklin homeowner and business owner and student of history, I believe the significance of this site rises to a level that it ranks as a great symbol of the granite industry and development of infrastructure of the American West and deserves this designation on the National Registry.

The California Granite Company Quarry is a somewhat hidden treasure in the midst of our community that deserves to be shared with the public and future generations.

Sincerely,

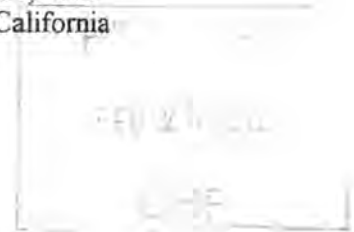
James E. Carlson, D.C., BA, M. Ed.

# SIERRA COLLEGE

We facilitate learning, inspire change and build community

February 21, 2012  
Rocklin, California

Jay Correia  
State Historian III  
Supervisor, Registration Unit  
California State Office of Historic Preservation  
1725 23<sup>rd</sup> Street  
Sacramento, California 95816



Dear Mr. Correia,

My name is Gary Noy. I am the Director of the Center for Sierra Nevada Studies and the Editor-in-Chief of the Sierra College Press, both of which are located on the Sierra Community College campus in Rocklin, California. I am writing to you to express my wholehearted support for placing the California Granite Company (aka Big Gun Quarry or Union Granite Company), located in Rocklin, on the National Register of Historic Places.

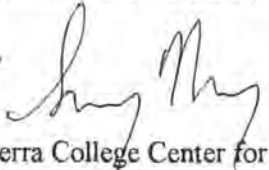
As a student and historian of the Sierra Nevada region and the American West for more than 25 years I can attest to the importance of the California Granite Company to Rocklin and to the history of the American West. Granite quarried in Rocklin was a major component in developing the infrastructure of this region for decades, ranging from the Transcontinental Railroad to civic and governmental structures in Sacramento, San Francisco, and Washington D.C. to the breakwater in Pearl Harbor. At one time, more than fifty granite quarries operated in Rocklin but, today, the only standing symbol of this significant industry is the California Granite Company. The quarry facility and structures deserve to be on the National Register of Historic Places. Failure to protect and celebrate this important historical remnant in this way would be a tragedy.

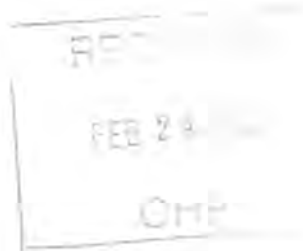
In the process of authoring three books on the American West and the Sierra Nevada, I have come in contact with many local, civic and government leaders who have been faced with the decision to remove or retain/renovate historic structures. The leaders who have voted to eliminate historic facilities have uniformly expressed to me their regret in authorizing their removal without following all possible avenues prior to the decision. Once these artifacts and structures are gone, they are gone forever; and a reconstruction cannot possibly replace the original, no matter how accurate.

For us today, and, even more importantly, for our children and grandchildren, it is vital to keep our history alive. One crucial way to achieve this is to safeguard our historic venues and structures by placing them on the National Register of Historic Places.

I would strongly urge the placement of the California Granite Company on the Register before the quarry and the industry it symbolizes disappears forever into the mist of history.

Yours truly,

Gary Noy   
Director, Sierra College Center for Sierra Nevada Studies  
Editor-in-Chief, Sierra College Press  
[gnoy@sierracollege.edu](mailto:gnoy@sierracollege.edu)



4112 Tahoe Vista Dr.  
Rocklin, CA 95765  
February 21, 2012

Jay Correia, State Historian  
Supervisor, Registration Unit  
CA State Office of Historic Preservation  
725 23<sup>rd</sup> Street  
Sacramento, CA 95816

Dear Mr. Correia,

I have been a resident of Rocklin, CA since June, 2001, and have a BS in History from Towson Univ. in Maryland. Naturally the first thing I did when I moved up here from the Bay Area was to try and learn the fascinating history of Rocklin.

Many, many times, as I drove downtown, I drove past the Big Gun Mining facility or, as it was known after the 1860's, the Capitol Granite Company. Believe it or not, when I moved here it was still in operation, as the last operating quarry of the sixty-one quarries that at one time operated in Rocklin.

Rocklin owes it's name to an underlying granite pluton. The City once had the sobriquet "The Granite Captial of the West." Big Gun Mining Co. was established in the 1860's and the facility was in operation until 2005! Our granite was used in many, many places all over the Country, including Pearl Harbor in Hawaii.

If placing the Big Gun Mining facility site on the National Register of Historic Places will aid in saving it as an historic site for future generations to visit, so they can get to know and appreciate their heritage, I would urge you, strongly, to approve the application.

Sincerely,

*Carol Powell*



5200 5th St.  
Rocklin, CA 95677  
February 27, 2012

Jay Correia, State Historian  
Supervisor, Registration Unit  
CA State Office of Historic Preservation  
725 23<sup>rd</sup> Street  
Sacramento, CA 95816

Dear Mr. Correia,

I was raised in Rocklin, received a Mechanical Engineering degree from UC Berkeley, and was employed on both east and west coasts. While in the east we came to realize how important our heritage can be in defining a community. We retired to Rocklin in 1996. Since 1996 we (the Rocklin Historical Society with the City's assistance) created the Rocklin History Museum, established Rocklin's Heritage Park, and saved and rehabilitated Rocklin's oldest public building, St. Mary's Church (1883). We included in our objectives the development of the historic California Granite Co. operation (aka the Big Gun Mining Co) and the remains of the Rocklin CPRR roundhouse as interpretive centers for Rocklin's heritage.

In December 2010 the Rocklin Redevelopment Agency purchased a 7.2 acre parcel including the Big Gun quarry, derricks, stone processing sheds and various equipment. While assisting with cleanup of the property and the salvaging of artifacts, members of the Rocklin Historical Society became aware of the potential of the quarry operation as a heritage site. Subsequently the Rocklin Heritage Committee was formed to concentrate on efforts necessary to preserve the quarry. The committee includes some members of the historical society and additional members of the community dedicated to the preservation of the California Granite Co. site.

I am writing in support of the application for inclusion of the California Granite Co on the National Register of Historic Places because of its importance to the community as one of the earliest, and as the largest and longest operating quarry in Rocklin, California. Established in 1865 by S.D. Smith as the Capitol Granite Co., the quarry includes 100 year old structures, the only remaining wooden quarry structures from the early 1900's. Also, the quarry is representative of Rocklin's major industry from as early as 1855 through the 1920's - second only to the CPRR and SPRR roundhouse operation that ended in 1908.

The Rocklin quarries in general, and California Granite Company in particular, provided employment for immigrant workers – first primarily Irish and, later, Finnish immigrants. The California Granite Co. quarry was operated by a succession Finnish families (Mantyla, Pernu, and Ruhkala) ca 1890 thru 1977. As a side note: "Black Granite" from the black quarry near Horseshoe Bar and Auburn-Folsom Road was also mined extensively by the Ruhkala family and processed at the California Granite Co site..

Enclosed are additional notes regarding the California Granite Co. quarry (aka Big Gun) that may be helpful in support of our application. We sincerely appreciate your consideration and help with our application for inclusion in the register. If I can be of any assistance please feel free to contact me.

Sincerely yours,

Gene Johnson, Member Rocklin Historical Society and Rocklin Heritage Committee  
Tel: 916-624-2378

Enclosure – letter to Jay Correia from Gene Johnson, Feb 27, 2012.

## Rocklin - Granite Capitol of the West

Located astride the huge granite pluton extending from Folsom to Lincoln, Rocklin owes its very name to its underlying hard rock foundation.\* It is believed that Granite mining in Rocklin began in 1855 with granite provided for the Fort Point military facility at San Francisco. With the Central Pacific Railroad completed to Rocklin in 1864, transport of good quality Rocklin granite to distant users became economical. Improvements in mining technology further reduced costs and widened the market for granite products. Ultimately, to satisfy the demand, granite was mined at 61 Rocklin locations. Locals christened Rocklin "The Granite Capitol of the West".

### Granite Mining & Technology in Rocklin

Rocklin's granite mining industry was established by Irish settlers and later was dominated by Finnish immigrants (ca 1900). Mining operations continued to 2005. Product produced by Rocklin stonecutters ranged from curbing for San Francisco streets, to dimensional stone for buildings and courthouses, to the Bank of Italy's intricately detailed frieze.

During the same 150 years hard rock mining technology made significant advances. Drilling technology progressed from the manual sledge hammer and chisel, to steam powered and, then, pneumatic powered drills. For cutting granite, the reciprocating steel grit saw was replaced in the mid-1900's by carbide and, then, diamond circular and wire saws. The single horse power of early derricks gave way to steam power that, in turn, was displaced by electro-pneumatic power. Transport of granite products progressed from the use of ox teams, to early wood burning steam locomotives, then to coal and oil fired engines.

### Big Gun Mining Co – railroad rip-rap to semiconductor silicon.

Big Gun Mining Co at Rocklin Road and Pacific Street was established in the 1860's as Capitol Granite Co to provide material for the new state capitol building. The quarry provided rip-rap (irregular rough granite) for Transcontinental Railroad fill and dimension granite to build western cities. With operations extending well into the 1900's Big Gun became Rocklin's largest quarry, having provided material, architectural stone and finished granite products for projects extending from Washington DC to the Philippine Islands.

In the 1970's, 6000 tons of Bear River quartz were processed at the Big Gun rock crushing plant and incorporated in concrete to create the glistening white surface of San Francisco's Transamerica pyramid. Subsequently, quartz from Big Gun property near Foresthill, CA\*\* was crushed in Rocklin and shipped to Corning Glass Works that, in turn, produced ultrapure silicon for the semiconductor industry.

Big Gun operations ceased ca 2005.

\*Ref: [www.rocklinhistory.org](http://www.rocklinhistory.org) History Series, "A Town Built on Granite" by Gary Day.



SF Bank of Italy frieze produced at Big Gun quarry  
(California Granite Co at the time - ca 1920)





# City of Rocklin

3970 Rocklin Road  
Rocklin, California 95677-2720  
O | 916.625.5000  
F | 916.625.5095  
www.rocklin.ca.us

March 5, 2012

California State Parks  
Attn: Office of Historic Preservation  
Mr. Milford Wayne Donaldson, FAIA  
State Historic Preservation Officer  
P.O. Box 94296  
Sacramento, CA 94296-0001



Re: **National Register of Historic Places Nomination for California Granite Company,  
City of Rocklin**

Dear Mr. Donaldson,

The City of Rocklin, serving as the Successor Agency for the Rocklin Redevelopment Agency and sole owner of the property in question, submits our objection to the National Register Nomination as submitted by the Rocklin Heritage Society. The application was submitted without the knowledge or approval of the City of Rocklin, the Rocklin Redevelopment Agency or Rocklin Successor Agency. Therefore, we respectfully request that the application be pulled from consideration.

Sincerely,

Ricky A. Horst, City Manager  
Rocklin Redevelopment Successor Agency

cc: File

---

Information 916.625.5000

Administrative Services 916.625.5000 • City Hall 916.625.5560 • Community Development 916.625.5100  
Community Services & Facilities 916.625.5200 • Fire 916.625.5300 • Police 916.625.5400 • Public Works 916.625.5500

Mr Jay Correia  
State Historian III  
Supervisor, Registration Unit  
California State Office of Historic Preservation



March 9, 2012

I am writing in support of the nomination of the Capitol Quarry area in Rocklin CA to the State Historic Preservation Office.

I have only lived here for eleven years but have been amazed at what an important part Rocklin's granite mining industry played in the development of some of our State's important buildings and infrastructure. Granite from Capitol Quarry, also known as Big Gun Quarry, built the California State Capitol, the Auburn Courthouse and many of San Francisco's buildings, including the Transamerica Building, parts of the Hibernia Bank, the Crocker Building and the Palace Hotel.

The old deteriorating sheds that once held the huge stone saw, composed of 16 foot long blades, and the 40foot overhead Bridge Crane, are in poor condition at the present time, but there is hope, and evidence, that significant parts could be fortified and used in a future outdoor public history museum.

The significant size of this past mining operation is very valuable to the future understanding of this community's part in California's past. The status that recognition by the State Office of Historical Preservation would convey is very important to development in Rocklin, as well as, for the educational and tourist value it may generate in the future. Rocklin played its unique part in the development of the West. I urge you to grant historic status to the Capitol Quarry and surrounding acreage.

Sincerely,

A handwritten signature in cursive script that reads "Janet Dunlap".

Janet Dunlap  
915 Marvin Gardens Way  
Rocklin CA 95765

**OFFICE OF HISTORIC PRESERVATION  
DEPARTMENT OF PARKS AND RECREATION**

1725 23<sup>rd</sup> Street, Suite 100  
SACRAMENTO, CA 95816-7100  
(916) 445-7000 Fax: (916) 445-7053  
calshpo@parks.ca.gov  
www.ohp.parks.ca.gov



March 13, 2012

Ricky Horst  
City Manager  
Rocklin Redevelopment Successor Agency  
3970 Rocklin Road  
Rocklin, California 95677

Re: **National Register of Historic Places Nomination for California Granite Company**

Dear Mr. Horst,

Thank you for your letter of March 5 regarding this issue. Unfortunately, the nomination cannot be pulled from consideration at this time. Generally, items are only removed from the agenda, or withdrawn from our list of nominations under review, at the request of the nominating party. Individuals and groups nominating properties are encouraged but not required to notify property owners prior to submitting a National Register nomination, but our office notifies property owners when a nomination is received. A letter notifying the City of Rocklin of the receipt of this nomination was sent on December 19, 2011.

The State provides notice of the intent to nominate a property and solicits written comments especially on the significance of the property and whether or not it meets the National Register criteria for evaluation. Your letter will be included in the information provided to the State Historical Resources Commission for their consideration of the California Granite Company nomination on May 3, 2012. Subsequent comments regarding the eligibility of the property, in support or opposition, are welcomed, and will also be presented to the Commission. Representatives of the City of Rocklin are also welcome to attend the Commission meeting on May 3 to provide testimony in person. If you have any further questions, please feel free to contact William Burg of my staff at (916) 445-7004.

Sincerely,

A handwritten signature in black ink that reads "Milford Wayne Donaldson". The signature is written in a cursive style with a long vertical line extending downwards from the end.

Milford Wayne Donaldson  
State Historic Preservation Officer

March 19, 2012



California Office of Historic Preservation  
P.O. Box 942896  
Sacramento, CA 94296-001

SUBJECT: CALIFORNIA GRANITE COMPANY, 5255 PACIFIC STREET,  
ROCKLIN, PLACER COUNTY, CA. - LETTER OF SUPPORT FOR  
NOMINATION TO NATIONAL REGISTER OF HISTORIC PLACES, MAY 3,  
2012

To whom it may concern,

I am writing in support of the above nomination and respectfully request the Commission vote to approve its listing. I have been a resident of Rocklin, CA for the past 26 years and realize the significance the California Granite Quarry (Quarry) played in Rocklin's heritage as well as the history of Northern California. There's a genuine need to recognize this site and retain one of the last remaining artifacts this community has that represents its role in California's early history and development.

This truly historic site, established in 1865, is located in the heart of this community and is the focal point of Rocklin's downtown core. It can be credited for many nearby historical structures that are still standing today, some of which include:

- St. Mary's Church (circa 1883 & recently restored), the first Catholic Church in this community complete with its exposed granite block foundation.
- Rocklin City Hall, (circa 1910), originally built as the California Granite Co. store. It sits directly adjacent to the Quarry with its exterior walls constructed of granite.
- Barudoni Butcher Shop (circa 1905), a tall building located 2 blocks north west on historic Front Street (an historical district) that captures the flavor of old Rocklin dating back to its early days. This is the only remaining building still standing after the big fire and was constructed utilizing large granite building blocks.
- Round House (circa 1866-1867), complete with its individual granite bays which are still evident. It is located just one block from the Quarry. The hope is that one day this will be recognized too for its historical significance not only to Rocklin but the association it had with the early

Central Pacific Railroad and undergo restoration as a working example of the vintage railroad industry of the time and the contribution it made to the transporting of granite.

- House – located adjacent to the Quarry, the exterior is constructed completely of granite stone.
- Twelve Bridges, a series of beautiful granite slab and arched bridges, which lead to the estate of Joel Parker Whitney. These were actually constructed from stone from another nearby quarry (and a hopeful candidate for your future consideration).
- Others

The Quarry was the largest operation of its kind in all of Rocklin and is centrally located between these important historical sites. It is the only one of 65 quarries that still exists with standing structures and when hopefully restored to its former like appearance one day, will become forever recognized as the anchor and important association with Rocklin's history. Preserving the Quarry would complete the entire picture and help further demonstrate the vital role it played in making Rocklin a vibrant part of this areas economy as well as impacts it made on the surrounding region (including other areas of Northern California with iconic historic structures in both Sacramento and San Francisco that were constructed utilizing granite from the Quarry.

I trust the Commission will recognize the importance of this site as it is truly the crown jewel of this community and should not be allowed to be forgotten for the dominate role it played in this communities history. A favorable decision will be the first step in helping recognize the historical significance of the Quarry as the true heart and soul of this community.

Thank you for your consideration,

A handwritten signature in black ink, appearing to read 'Mark F. Blucher', with a long horizontal line extending to the right.

Mark F. Blucher, Architect, C13790  
3905 Baltic Circle  
Rocklin, CA 95677

**OFFICE OF HISTORIC PRESERVATION  
DEPARTMENT OF PARKS AND RECREATION**

1725 23<sup>rd</sup> Street, Suite 100  
SACRAMENTO, CA 95816-7100  
(916) 445-7000 Fax: (916) 445-7053  
calshpo@parks.ca.gov  
www.ohp.parks.ca.gov



May 17, 2012

Ms. Carol Shull, Keeper  
National Register of Historic Places  
National Park Service 2280  
1201 I (Eye) Street, NW  
Washington, DC 20005

Subject: **California Granite Company  
Sacramento, Sacramento County, California  
National Register of Historic Places**

Dear Ms. Shull:

Enclosed please find the **California Granite Company** nomination to the National Register of Historic Places. This property is located in the city of Rocklin, in Placer County, California. On May 3, 2012, the State Historical Resources Commission unanimously found the property eligible for the National Register under Criterion A at the local level of significance.

The property is nominated on behalf of the property owner, the City of Rocklin, by the Rocklin Heritage Committee. One letter of opposition from the property owner, the City of Rocklin, seven letters of support, and a copy of a petition supporting preservation of the nominated property, are included with the nomination.

If you have any questions regarding this nomination, please contact William Burg of my staff at 916-445-7004.

Sincerely,

A handwritten signature in cursive script, appearing to read "Milford Wayne Donaldson".

Milford Wayne Donaldson, FAIA  
State Historic Preservation Officer

Enclosures



**California Granite Company  
Rocklin, Placer County, California  
Staff Report**

California Granite Company is a 7.2 acre granite quarry located in Rocklin, California. The property is dominated by a large open granite quarry, first opened in 1865. Buildings and structures on the site include wooden work sheds with corrugated metal siding, a wooden office building with granite foundation, a bridge crane, reciprocating gang saw, wire saw and railroad tracks.

The property is eligible for the National Register under Criterion A at the local level of significance for its association with granite quarrying in the city of Rocklin, a city named for its granite mining industry. California Granite Company was the city's largest quarry, established early in the community's history and the last to remain in operation. The property's period of significance is 1865 to 1940, the year the property became Rocklin's only remaining quarry, marking a period of transition for the city from extraction technology to a suburban community. Granite quarried from this quarry was used to construct the California State Capitol and other iconic buildings and engineering uses throughout California, in forms including massive granite blocks, highly detailed architectural details, or mundane gravel and riprap for road building and railroad ballast.

The property is no longer in use and some of the sheds have been damaged by exposure to the elements, but the property retains sufficient integrity for National Register eligibility as examples of functional, vernacular industrial architecture intended for use by extraction industries. The dominant feature of the site is the large granite quarry adjacent to the sheds and equipment used to turn Rocklin granite into architectural components used in some of California's most recognizable buildings.

The property is nominated by the Rocklin Heritage Committee. The property owner is the City of Rocklin. The nomination has received seven letters of support and a petition signed by 720 individuals in support of the nomination. The City of Rocklin sent a letter objecting to the nomination.

Staff supports the nomination as written and recommends the State Historical Resources Commission determine that the California Granite Company meets National Register Criterion A at the local level of significance. Staff recommends that the State Historic Preservation Officer approve the nomination for forwarding to the National Park Service for listing in the National Register.

William Burg  
Historian I  
April 9, 2012

# Save Our Sheds Petition – July 29, 2011

It has been brought to my attention that the only remaining structures representing 150 years of granite quarry operations at 61 quarrying sites will be lost if the current council directive is carried out.

I respectfully request that members of the Rocklin City Council reconsider and rescind the directive that would result in disassembly and/or demolition of the Big Gun Monument and Cutting Sheds at this time and that the City allow one year for Community input regarding the fate of these Heritage Structures.

Name	Address		
Edward Fujimoto	1136 Residum Way Rocklin CA		
Byron Day	4215 MIDAS AVE		
Paul Hays	6250 Jack Frost Cant Rocklin		
Maria Garcia	5533 BUTTEVIEW CT ROCKLIN CA		
Phil Kutter	3812 Sullivan Dr. Rocklin CA		
Daniel Knutsen	2206 January Way Rock.		
Fran Inmogh	4847 Babylon Rocklin		
Betty Robertson	4149 Tahoe Vista Rocklin		
Carl Hauser	4368 Rowland Hgts Rocklin		
Lillie Wilson	1998 Pierce Pl. Rocklin CA		
Amy Sherer	2321 Shelter Cove Ct Rocklin CA	95765	
Jeff Sheer	2321 Shelter Cove Ct Rocklin CA	95765	
Anna Carrigas	2102 Iron Pt Ct 95765		
Mary E. Poo	3421 VINCENT <sup>COVE</sup> 95765		
John Poo	3421 Vincent Ct 95765		
Bob Blakely	3450 Midas Ave Rocklin 95677		
Chris Flander	5157 CAMDEN RD ROCKLIN 95765		
Edmeda	6411 Meadowcroft Rocklin CA 95765		
Don Hensler	2436 S. Whitney Rocklin		
Haley Hergert	2436 S. Whitney Rocklin		
Christy Barr	5115 3rd St Rocklin CA 95762		

# Save Our Sheds Petition – July 29, 2011

It has been brought to my attention that the only remaining structures representing 150 years of granite quarry operations at 61 quarrying sites will be lost if the current council directive is carried out.

I respectfully request that members of the Rocklin City Council reconsider and rescind the directive that would result in disassembly and/or demolition of the Big Gun Monument and Cutting Sheds at this time and that the City allow one year for Community input regarding the fate of these Heritage Structures.

Name	Address		
Carrie Kirchgastner	5695 1/2 Aguilar Rd		
Brad Taylor	1634 Los Carneros		
Beverly Casaca	6475 Cormorant		
Jebbie Robinson	1510 YELLOWSTONE ROCKLIN, CA		
John [unclear]	210 Ridgeview Cir Rocklin, CA		
Sandra Kurehara	210 Ridgeview Cir Rocklin, CA		
Linda Swanson	3420 Heland St Rocklin CA 95765		
Walter [unclear]	6445 VENEZIA HWY ROCKLIN, CA 95765		
Jane Vidoss	6445 VENEZIA HWY ROCKLIN, CA 95765		
[unclear]	5765 Kellie Ct Rocklin 95765		
Keith Kmetz	2215 Jason Ct Rocklin 95765		
Wendy Kmetz	" " Rablin		
Bob Cushman	P.O. Box 2513 Rocklin, CA		
NEEMSA FOX	P.O. Box 2513 Rocklin CA		
Cassy Cove	677 Whittier Rd Lincoln		
RICHARD KANE	1674 KAWERS RD ROCKLIN		
Donovan James	19. farm		
Rachael James	Rachael James		
DOUG RENZ	P.O. Box 855 F.H.		
Roger Spinks	6213 Flemings Way		
Julia Spinks	6213 Flemings Way		

(2)

# Save Our Sheds Petition – July 29, 2011

4

It has been brought to my attention that the only remaining structures representing 150 years of granite quarry operations at 61 quarrying sites will be lost if the current council directive is carried out.

I respectfully request that members of the Rocklin City Council reconsider and rescind the directive that would result in disassembly and/or demolition of the Big Gun Monument and Cutting Sheds at this time and that the City allow one year for Community input regarding the fate of these Heritage Structures.

Name	Address	
Stephanie Phillips	6024 Kings Canyon	Rocklin 95765
Luigi Infiso	7724 orthocum way	Antelope 95823
Frank Weismantel	10029 Necker St	Elverta 95626
Kim Salgado	3400 Rocklin Rd	Rocklin 95677
George Salgado	3400 Rocklin Rd	Rocklin, 95677
PATRICE CARDOTT	5180 5th St.	ROCKLIN, 95677
CAROL POWELL	4112 TAHOE VISTAS	ROCKLIN 95765
GLENDIA BEDROSSIAN	5120-3rd St	ROCKLIN 95677
GENE J LONG	5120 3ST	ROCKLIN 95677
GAYLA HEGGEN	5549 W. Sunward Ct	Rocklin 95677
Maude Heggen	5548 W. Sunward Ct	Rocklin 95677
Brian Mei's	3780 Oak St	Rocklin 95677
P. Phare Camp	7236 Cross	C.H. CA 95610
Jeff Camp	7236 CROSS	C.H. CA 95610
Pat O'CONNOR	4600 ODESSA CT	ROCKLIN, CA 95677
R. Phillippi	3812 Coldwater	Rocklin 95765
Bob Mart	2405 Coody Ct	Rocklin 95765
JOHN HARDIN	6261 Arctic Loop	Rocklin 95765
Billy Joe Hassner	3410 MIDAS AVE	" 95677
Bart Riebe	5404 Pacific	Rocklin
Jenix McEwan	2950 Kears Way	Rocklin 95677

21

21

(3)

# \* Save Our Sheds Petition – July 29, 2011

It has been brought to my attention that the only remaining structures representing 150 years of granite quarry operations at 61 quarrying sites will be lost If the current council directive is carried out.

I respectfully request that members of the Rocklin City Council reconsider and rescind the directive that would result in disassembly and/or demolition of the Big Gun Monument and Cutting Sheds at this time and that the City allow one year for Community Input regarding the fate of these Heritage Structures.

Name	Address		
Steve Wellington	5615 Opel Ct.	Rocklin Ca	95677
Jill Page	5945 Aspen Ct	Rocklin Ca	95677
FRANK ALVIN	4155 DUBOSE	ROCKLIN	95677
REVERLY HUMPHREY	4325 JAMERSON	Rocklin	95677
Bob Habian	3153 Stardust St.	Rocklin	95677
DAN VAN BOGERT	5300 CLIPPER	ROCKLIN	95765
Doug Bradley	6360 Rainier Ave	Rocklin	95677
GARE SHUMWAY	2948 TWIN CREEKS LN	ROCKLIN	95677
STEVEN SHUMWAY	3780 River Run Cir	Rocklin	95765
Russ Holland	5820 Elmwood Ct	Rocklin	95677
Jonathan Taylor	5603 Terrace Dr.	Rocklin	95765
Joanne Taylor	5603 Terrace D	Rocklin	95765
JEFF CALVERT	4038 SILVER ST	ROCKLIN	95677
G. TAYLOR	2944 GARDNER	ROCKLIN	95965
Lise Basher	3404 Marilee	Rocklin	95677
Brian Dierksen	5653 Adobe	Rocklin	95765
Lori Norris	4910 2nd St.	Rocklin	95677
BIZARDON	2640 S. Whitney	ROCKLIN	95677
Elyse Beckman	5553 Calumet Way	Rocklin	95765
John J. Mead	4003 Sweetwater Ct.	Rocklin	95677
Lisa Machado	4003 Sweetwater Ct.	Rocklin	95677

# Save Our Sheds Petition – July 29, 2011

It has been brought to my attention that the only remaining structures representing 150 years of granite quarry operations at 61 quarrying sites will be lost if the current council directive is carried out.

I respectfully request that members of the Rocklin City Council reconsider and rescind the directive that would result in disassembly and/or demolition of the Big Gun Monument and Cutting Sheds at this time and that the City allow one year for Community input regarding the fate of these Heritage Structures.

Name	Address		
Donna Naylor	P.O. Box 881	LOOMIS	95650
MARK MALARD	Putter Ct	Rocklin	95677
Tamara Loughlin	5703 Byron Ct	Rocklin	95765
Kent Loughlin	5703 Byron Ct	Rocklin	95765
Donna Nunn	4710 Rocetree	Rocklin	95677
Sharon Vigil	5384 Hidden Glen Dr	Rocklin	95677
Grace Zad	4615 5th St	Rocklin	95677
KEN ZAD	4615 5TH ST.	Rocklin	95677
JAMIE SEARS	3523 Willard Wy	Rocklin	95677
Ji Kyle Drury	403 Harwerth Ct.	Roseville	95661
Allison Jones	3427 Nimbus Ct.	ROCKLIN	95765
Laura Anne <sup>Bald</sup>	1505 Tulo	Rocklin	95677
<del>Shirley</del>		Rocklin	95677
Vinita	3706 AURORA LOOP	Rocklin	95677
Sanyon	3706 AURORA LOOP	ROCKLIN	95677
Danielle	5236 Wintham	Rocklin	95765
DAVID	4163 LAKEVIEW	ROCKLIN	95677
Jeff Tomony	2212 MISTY HOLLOW	Rocklin	95765
DAN HANSEN	913 BAKER HILLWAY	Rocklin	95765
Albert Lee	2235 Eagle Dr.	Rocklin	95677
Brenda Lee	2235 Eagle Dr.	Rocklin	95677

\* 2

Jim 11/15 Joy was here

# Save Our Sheds Petition – July 29, 2011

It has been brought to my attention that the only remaining structures representing 150 years of granite quarry operations at 61 quarrying sites will be lost if the current council directive is carried out.

I respectfully request that members of the Rocklin City Council reconsider and rescind the directive that would result in disassembly and/or demolition of the Big Gun Monument and Cutting Sheds at this time and that the City allow one year for Community input regarding the fate of these Heritage Structures.

Name	Address		
Maggie Della	5435 Ruth Calder rd	Rocklin, CA	95677
Marcia Myers	1401 Standish Cir.	Lincoln, CA	95648
Don Myers	1401 Standish Cir.	Lincoln CA	CA 95648
Megan Myers	1401 Standish Cir	Lincoln CA	
Suzanne Ratz	6307 Emerald Dr.	Rocklin, CA	95677
Lee Hangesb	5505 S. Grove St	Rocklin, CA	95677
Todd Hangesb	2601 Coloma Ct Apt 10	Placerville, CA	95667
LARRY BRABBIN	3380 BLACKOAK DR	ROCKLIN	95765
Jan Brabbin	3380 BLACKOAK DR	ROCKLIN	95765
MARV ANNE BOWERS	1903 HARVEST CT	ROCKLIN	95765
Sean Bowers	1903 Harvest Ct	Rocklin	95765
Sharon Bowers	1903 Harvest Ct.	Rocklin	95765
Tamson Taylor	5405 Pacific St	Rocklin	95677
Nancy Cavanaugh	5637 Terrace Dr	Rocklin	95677
Tom Cavanaugh	5637 Terrace Dr	Rocklin	95765
John Gyle	4020 RAINBOW BLVD	Rocklin	95677
Patrick McGinnis	4738 Racetrack cir	Rocklin	95677
PATRICK DALY	3265 MISSION WY	ROCKLIN	95677
Rachelle Daly	3265 Mission Way	Rocklin	95677
Chris Enborg	4905 3rd St.	Rocklin	95677
Teri Enborg	4905 3rd St	Rocklin	95677

# Save Our Sheds Petition – July 29, 2011

2

It has been brought to my attention that the only remaining structures representing 150 years of granite quarry operations at 61 quarrying sites will be lost if the current council directive is carried out.

I respectfully request that members of the Rocklin City Council reconsider and rescind the directive that would result in disassembly and/or demolition of the Big Gun Monument and Cutting Sheds at this time and that the City allow one year for Community input regarding the fate of these Heritage Structures.

Name	Address	Name	Address
Eric Heckelmann	4465 Willow Glen Way Rocklin CA 95677		
Kristi Harkalman	4465 Willow Glen Way Rocklin CA 95677		
RICK NEIDHART	5315 Swindon R Rocklin CA 95765		
Kathy Neidhardt	5312 Swindon Rd Rocklin CA 95765		
Susan Neidhardt	4920 High St Rocklin CA 95677		
Robert E. Bannock	4920 High St Rocklin CA 95677		
GLORIA BEVERAGE	5684 MAPLE ST ROCKLIN		
Calvin Doyle	5325 Comstock Dr Rocklin		
Matt Doyle	5075 5th St Rocklin CA 95677		
Fred Voff	5425 Comstock CT		
Vic Pectado	2511 Oak Ave Woodland CA		
Ben Spurr	5250 Front St Rocklin CA		
M. SCLARE	5320 FRONT ST		
Ed Geibel	3881 Parkside Dr		
Doreen Clark	5320 Front St Rock		
Craig Rybicki	419 MARIS DR		
Mary Kelley	5808 Balfour Rd Rocklin CA		
Edie Boyd	5845 Zion Ct Rocklin CA		
JEFF RUBY	3812 Sweetwater Dr Rocklin CA		
JOHN CECIL	5628 Delano Way Rocklin CA 95677		
Jerry Darling	5100 Second St Rocklin		

21



# Save Our Sheds Petition – July 29, 2011

It has been brought to my attention that the only remaining structures representing 150 years of granite quarry operations at 61 quarrying sites will be lost if the current council directive is carried out.

I respectfully request that members of the Rocklin City Council reconsider and rescind the directive that would result in disassembly and/or demolition of the Big Gun Monument and Cutting Sheds at this time and that the City allow one year for Community input regarding the fate of these Heritage Structures.

Name	Address	Name	Address
Karin DeFoe	5730 Byron Ct	Rocklin Ca	95765
Nancy Lohse	4645 N. Star St	Rocklin CA	95677
<del>Healey Lohse</del>	4645 N. Star St	Rocklin, CA	95677
Lisa Wayne	5018 Foothills #3223	Roseville CA	95747
Karen Morse	4450 Willoughby <sup>W</sup> Ln	Rocklin CA	95677
Jarrod Gerbaud	6630 Madison <sup>E</sup>	Rocklin Ca	95765
Dacia Gerbaud	6630 Madison Ct	Rocklin, CA	95765
Rubén James	5607 Wines Ct	Rocklin, CA	95765
Rubén James	"	"	"
Sara Folmer	2218 Boarding House Ct	Rocklin CA	95765
Jeff Folmer	"	"	"
Nick Kirk	5588 Graham Ct	Rocklin CA	95677
José Lapudo	3810 Diamond Ct	Rocklin CA	95677
Joe Page	5445 Aspen	Rocklin CA	95677
Dan Garbado	3810 Diamond Ct	Rocklin	95677
KATHLEEN TUCKER	2809 Sierra Dr.	Rocklin CA	95765
Kenneth Cox	4804 Granite Dr #2355	Rocklin CA	95677
Kristi Contartese	6406 Cormorant Circle	Rocklin	95765
JIM VILLANUEVA	4329 MERIDIAN WAY	ROCKLIN, CA	95765
Brenda Souza	1446 ALHAMBRA OAKS CT, #11	CITRUS HEIGHTS, CA	95602
Brenda Souza	2235 MISSION WAY	ROCKLIN, CA	95677
Alena Hansen	4915 Stirling St	Granite Bay	95746

(1)

2

# Save Our Sheds Petition – July 29, 2011

It has been brought to my attention that the only remaining structures representing 150 years of granite quarry operations at 61 quarrying sites will be lost if the current council directive is carried out.

I respectfully request that members of the Rocklin City Council reconsider and rescind the directive that would result in disassembly and/or demolition of the Big Gun Monument and Cutting Sheds at this time and that the City allow one year for Community input regarding the fate of these Heritage Structures.

Name	Address	Name	Address
<i>[Signature]</i>	2201 Merino Court <sup>Rocklin CA</sup>		
Denise Bailey	5103 <sup>St</sup> San Francisco		
Roger Robinson	5130 PACIFIC ST <sup>#A</sup>		
<i>[Signature]</i>	5222 Brookfield Cir	MATT MAJAREZ	
<i>[Signature]</i>	2435 Tiffany Ct		*624-3
Bernice Walker	2435 Tiffany Ct		
Teri Gormley	137 Aedra Dr Auburn 95603		
Matt Brennan	Loomis		
Victoria Gormley	Auburn		
Tamara Taylor	5405 Pacific St Rocklin		
Lothar Mader	3163 Steadfast St Rocklin, CA 95677		
Michael Self	5300 Harrison St Rocklin CA 95677		
Susan Self	5900 Pasadena St Rocklin CA 95677		
John Mitchell	7309 Cross Dr. Citr. Hgts., 95610		
John Persson	201 Johnston Ct. Roseville, CA		
Jon Puntan	3486 C - St		
<i>[Signature]</i>	3486 - C St		
<i>[Signature]</i>	3310 Zircod Dr ROCKLIN CA		
Jan Barnt	4850 3rd St. Rocklin CA		
Wesley Gurnel	4850 3rd St Rocklin		
Michael Swartz	5040 3rd St		



# Save Our Sheds Petition – July 29, 2011

It has been brought to my attention that the only remaining structures representing 150 years of granite quarry operations at 61 quarrying sites will be lost if the current council directive is carried out.

I respectfully request that members of the Rocklin City Council reconsider and rescind the directive that would result in disassembly and/or demolition of the Big Gun Monument and Cutting Sheds at this time and that the City allow one year for Community input regarding the fate of these Heritage Structures.

Name	Address	Name	Address
JEFF LINDGREN	5804 APPALWOSA PL	ROCKLIN	
Joni Lindgren	" "	"	
Kyle Lindgren	" "	"	
Debra Boris		Rocklin	
Robert M. Johnson	3908 Dome Circle	Rocklin	
Constance Johnson	" " "	"	
Jonny Seewood	5623 Delaware Way	Rocklin	
Michelle	5623 Delaware Way	Rocklin	
Kathleen Gibbons	5315 5 <sup>th</sup> St Rocklin		kathleen.gibbons@yahoo.com
Carolyn Dineal	2513 Zuider Zee	Elverta CA	
Susan Plunkett	5350 2nd St	Rocklin CA	
Danelle Adams	622 Keebler Ave	Rosville CA	
CLIFF NEWMAN	3933 ARGOLAY	ROCKLIN	624-0416
Joe Sassenath	3982 Rawhide	"	768-9211
d'Lyn Sassenath	3982 Rawhide	Rocklin	
Shirley M. Finley	3335 Stanford Village Ct.	Rocklin	
Angela Huska	3966 Rawhide Rd		
Jeff Huska	3966 Rawhide Rd		
Alicia Huska	3966 Rawhide Rd		
Scott Reeves	5156 Camden Rd	Rocklin	
Leann Manjarrez	5222 Brookfield Circle	Rocklin, CA 95677	

21

# Save Our Sheds Petition – July 29, 2011

It has been brought to my attention that the only remaining structures representing 150 years of granite quarry operations at 61 quarrying sites will be lost if the current council directive is carried out.

I respectfully request that members of the Rocklin City Council reconsider and rescind the directive that would result in disassembly and/or demolition of the Big Gun Monument and Cutting Sheds at this time and that the City allow one year for Community input regarding the fate of these Heritage Structures.

Name	Address	Name	Address
Billy Clown	224 La Fayette		
Carrie Andrews	7390 Roseville Superette Ln		
Paul Ruck	4113 Trade Vista Dr Rocklin, CA 95765		
Alice Hamilton	4113 Trade Vista Dr Rocklin, CA 95765		
Stan Clark	3020 Crestwood Way Rocklin		
P. Clark	3020 Crestwood Rocklin		
Chad Vest	2137 Ranch View Dr. Rocklin		
Diana Moraga	5516 Sage Dr		
Cody Moraga	5516 Sage Drive		
Mike Arca	3050 Blade Oak Napa, CA 94558		
Glenn Pulkin	P.O. Box 607 Lincoln, CA 95648		
Tiffany Ford	P.O. Box 607 Lincoln, CA 95648		
Brenda Sade	5115 Park St Rocklin, CA 95677		
Chad Humock	1130 Circuit Dr Rocklin, CA 95765		
Karalyn Beck	1130 Circuit Dr Rocklin, CA 95765		
Steve Byron	8515 Spotted Pony Rocklin, CA 95765		
Roxanna Jeyel	6204 Singletree Ct.		
SCOTT & DANIEL	9180 Moon Dancer Lakota, Roseville 95747		
Debbie Thie	2510 Buckeye Drive Rocklin, CA 95767		
ANDREW HUIE	" "		
Rob M... SA...	2370 Clubhouse Rocklin, CA		



# Save Our Sheds Petition – July 29, 2011

It has been brought to my attention that the only remaining structures representing 150 years of granite quarry operations at 61 quarrying sites will be lost if the current council directive is carried out.

I respectfully request that members of the Rocklin City Council reconsider and rescind the directive that would result in disassembly and/or demolition of the Big Gun Monument and Cutting Sheds at this time and that the City allow one year for Community input regarding the fate of these Heritage Structures.

Name	Address		
Nicole Pilz	Rocklin		
CLAUDIA HENNS	RD 210	STEFANIE CT	
Jan K. Eric	Sweetgrass Ct	Rocklin	
Pat Kirk	Sweetgrass Ct	Rocklin, CA	
Diana McGinnis	4738 Race Track Circle	Rocklin	
Robert Bentley	5603 Bolton way	Rocklin, CA	
Martha Bentley	5603 Bolton way	Rocklin CA	
Allegra Hakim	5315 2nd St	Rocklin CA	
Carol Ann	3024 Strand Rd	Rocklin	
Michelle	5180 5th St	Rocklin	
CHARLEEN SWANG	5800 SEQUOIA ST	Rocklin, CA	
DANIEL SWANEY	5800 SEQUOIA ST	Rocklin, CA	
SWAN CUNNINGHAM	4020 RANSHIDE R. ROAD	ROCKLIN	
CHARLES COOK	4832 BLYNDON RD	Rocklin CA	
Norma Chan	2316 meridian way	Rocklin CA	
Sandra Tessmer	2316 meridian way	Rocklin CA	
Deanna Cook	4832 Blyndon Rd	Rocklin	
Ron Weis	4676 N. STAR ST.	Rocklin	
CARRIE BURKAGE	5065 4th St	Rocklin	
Paige Greenwood	2106 Kyle P. Ct	Rocklin	

21)

It has been brought to my attention that the only remaining structures representing 150 years of granite quarry operations at 61 quarrying sites will be lost if the current council directive is carried out.

I respectfully request that members of the Rocklin City Council reconsider and rescind the directive that would result in disassembly and/or demolition of the Big Gun Monument and Cutting Sheds at this time and that the City allow one year for Community input regarding the fate of these Heritage Structures.

Name	Address	
MARSHALL SMITH	5708 SUNFLOWER CT	<i>[Signature]</i>
Beth Smith	5708 Sunflower Ct	<i>[Signature]</i>
Trinity P. H.	5704 Sunflower Ct.	<i>[Signature]</i>
Paula Lee	5701 Sunflower Ct	<i>[Signature]</i>
Kristine West	5700 Sunflower Ct	<i>[Signature]</i>
Carly Jasielum	5700 Sunflower Ct	<i>[Signature]</i>
Lori Ayala	5707 Sunflower Ct	<i>[Signature]</i>
Arnold Ayala	5707 Sunflower Ct	<i>[Signature]</i>
Michael Andrews	5055 5 <sup>th</sup> St.	<i>[Signature]</i>
Mary Jane Andrews	5055 9 <sup>th</sup> St	<i>[Signature]</i>
Dylan Gray	3700 Turbot Way	<i>[Signature]</i>
Al Watt	3955 EVERETT AVE	<i>[Signature]</i>
Susan Adams	Facific	<i>[Signature]</i>
Jennifer Garcia	Lincoln	<i>[Signature]</i>
Oscar Goin	2095 Mt Pleasant	<i>[Signature]</i>
LAURA CLIFFORD	1540 ENGUSH COLONY WY	<i>[Signature]</i>
Theresa Vera	8672 Via Alta Way Eric Grove Ln 6214 Freedom Ln	<i>[Signature]</i>
Morgan Anderson	Subarus Hermits Cn 712 Edson Rd. Citrus Heights CA	<i>[Signature]</i>
Phillip Ortiz	1202 BENNINGTON CT. ROSELIE CA 95821	<i>[Signature]</i>
Joseph Wang	3525 AMETHYST CT Rocklin	<i>[Signature]</i>

# Save Our Sheds Petition – July 29, 2011

It has been brought to my attention that the only remaining structures representing 150 years of granite quarry operations at 61 quarrying sites will be lost if the current council directive is carried out.

I respectfully request that members of the Rocklin City Council reconsider and rescind the directive that would result in disassembly and/or demolition of the Big Gun Monument and Cutting Sheds at this time and that the City allow one year for Community Input regarding the fate of these Heritage Structures.

Name	Address		
Jennifer Kukulak	3455 Evelyn Ave	Rocklin	CA 95765
JACK GERHARDT	4334 NEWLAND HTS.	Rocklin	CA 95765
Ruchelle Shopes	2685 Mt. Pleasant Rd	Lincoln	CA 95648
11 Jake Hange	2685 Mohamed Ln	Lincoln	CA 95648
Cody Pauling	142 H. St	Lincoln	CA 95648
Dana Pauling	142 H. St	Lincoln	CA 95648
David Pauling	142 H. St	Lincoln	CA 95648
Renee Shopes	2685 Mt. Pleasant Rd	Lincoln	CA 95648
<del>Mark Clifton</del>	1570 English Colony Way	Penryn	95663
Erica Peters	5456 Willowcroft	Rocklin	95677
Paula Reynaga	3212 Puerto Rico Rd	W. Sac	95691
<del>Reg Sandoz</del>	5203 Equestrian Ct	Rocklin	95677
Tommy Holmes	3019 <sup>Springsville</sup> Meadows Dr	Rocklin	95677
MIKE SWARTEN	4110 OAK CT	ROCKLIN	95677
Patrick CLARK	5706 Sandstone CT	Rocklin	95677
Sara Le-Wang	3585 Amethyst Ct	Rocklin	95677
Robert Scharf		Rocklin	95765
Gloria Luna	7100 Stella Ln #7, Carmichael	CA	95608
Josmine Dandena	1436 Sandhill Dr	Rocklin	CA 95765
Carita Peck	305 Grammy Way	Rocklin	CA 95765
Rick Peck	"	"	"

# Save Our Sheds Petition – July 29, 2011

It has been brought to my attention that the only remaining structures representing 150 years of granite quarry operations at 61 quarrying sites will be lost if the current council directive is carried out.

I respectfully request that members of the Rocklin City Council reconsider and rescind the directive that would result in disassembly and/or demolition of the Big Gun Monument and Cutting Sheds at this time and that the City allow one year for Community Input regarding the fate of these Heritage Structures.

Name	Address		
Erin Gallana	5906 Backstone Dr.		
Kathy Palmerton	53rd January Dr	Rocklin	
Wynne Palmerton	53rd January Dr	Rocklin	
Ann Andlauer	3 Marty Cir	Roseville	
John Gornley	137 Acacia Dr	Auburn	
ANDREA BREWSTER	9810 KING RD	LOOMIS	
Shawn Stenger	4336 Newtons Ridge	Rocklin	
Shawn Stenger	4336 Newtons Ridge	"	
Bob Elwood	8290 Christina Ln	Granite Bay	CA 95746
Jason Walker	1555 32nd St.	Sacramento	CA 95816
Nick Lavne	4850 3rd St	Rocklin	CA 95677
Frankie Norris	4960 2nd St	Rocklin	CA 95677
Jim FERNANDES	5949 ALLAN DR	Rocklin	CA 95677
<del>Bob Elwood</del>	3686 C St	Rocklin	CA 95677
John Palmer	3686 C St	Rocklin	CA 95677
Cyfa	4850 3rd SE	Rocklin	CA 95677
John Palmer	4850 3rd St.	ROCKLIN	95677
Melanie Mador	4113 Stardust St	Rocklin	CA 95677
Suz Fuentes	5040 3rd St	Rocklin	95677
Calvin Shapiro		Rocklin	95677
Greg L. Job	6560 Woodcrest Ct	Rocklin	95677



# Save Our Sheds Petition – July 29, 2011

It has been brought to my attention that the only remaining structures representing 150 years of granite quarry operations at 61 quarrying sites will be lost if the current council directive is carried out.

I respectfully request that members of the Rocklin City Council reconsider and rescind the directive that would result in disassembly and/or demolition of the Big Gun Monument and Cutting Sheds at this time and that the City allow one year for Community input regarding the fate of these Heritage Structures.

Name	Address		
Cheryl Shaver	1434 Redwood Dr.	Rocklin	
Tom Sitavse	" "	"	
MARC WRISTON	2041 Archer Cir	Rocklin	
Leslie Weston	" " "	Rocklin	
Sharon Batson	2208 Mark Ct.	Rocklin	
Amber Batson	2208 Mark Ct.	Rocklin	
Barbara Beck	good luck !!!		
Edel Baird	711 University Ave Rocklin, Ca	Rocklin Ca	
Tom Bate	1632 Woodleaf Cir.	Roseville, CA	
cristine abron	2324 Canary Drive	Rocklin CA	
Harold Cabana	- do -	- do -	
Susan Yoder	4413 White Oak Ct.	Rocklin CA	
Melanie Alvarado	6148 Mesquero	Rocklin	
Matthew Johnson	1412 Redwood Dr. Rocklin CA 95765	Rocklin	
Emilee Johnson	1412 Redwood Dr. 95765	Rocklin	
Wendy Lang	5733 Bluffs Dr	Rocklin	
JAY Lanza	5733 Bluffs Dr	Rocklin	
Jamie Graves	602 San Miguel Ct	Roseville CA	PROPERTY WAS PURCHASED LAST FINEHOUSE - 6-22-79 8/2
Gary Graves	602 San Miguel Ct	Roseville CA	
Sarah Jefferson	7024 Pembroke Way	Rocklin, CA	EA
Kevin Jefferson	7024 Pembroke Way	Rocklin, CA	
APRIL BAIRD	2412 Stefanie	Rocklin 95765	

22

(22)

(22)

# Save Our Sheds Petition – July 29, 2011

It has been brought to my attention that the only remaining structures representing 150 years of granite quarry operations at 61 quarrying sites will be lost if the current council directive is carried out.

I respectfully request that members of the Rocklin City Council reconsider and rescind the directive that would result in disassembly and/or demolition of the Big Gun Monument and Cutting Sheds at this time and that the City allow one year for Community input regarding the fate of these Heritage Structures.

Name	Address		Signature
Kate Gibbons	5315 5 <sup>th</sup> St. Rocklin	Rocklin, CA 95765	Kathleen J. Gibbons
HAL CURTIS	4400 NEWLAND HTS	Rocklin 95765	Hal Curtis
Given Khoury	4534 Shenandoah Rd	Rocklin 95765	Given Khoury
Susan Manning	3510 Saddleback Ct	Rocklin 95765	Susan Manning
Sherry meyerhoff	4831 Blakden Rd.	Rocklin 95765	Sherry Meyerhoff
VICTORIA CURTIS	4400 Newland HTS	Rocklin 95765	Victoria Curtis
Charleen Emge	5816 Balfour Rd	" "	Charleen Emge
Margaret Williams	2207 E 14 <sup>th</sup> St	Rocklin CA	Margaret Williams
Tari LaRue	1201 Taylor Rd	Newcastle CA 95698	Tari LaRue
Ray Wicks	" "	" "	Ray Wicks
Amita Gerhardt	4354 Newland Hg	Rocklin 95765	Amita Gerhardt
Constance King	—	Rocklin, CA	Constance King
BRYAN GIBBONS	1160 MEADOW GATE DR	ROSEVILLE	Bryan Gibbons
Dan Polson	4509 Pacific	Rocklin	Dan Polson
Kathy Robinson	4509 Pacific	Rocklin	Kathy Robinson
Deane Wilson	4020 Silverstar Ct	Rocklin	Deane Wilson
Tyler v. Linsford	5140 Rocklin road	Rocklin	Tyler Linsford
Blaine Walker	3211 Lownview Ave	Loomis	Blaine Walker
Cindy Friedlander	879 Spotted Pony	Rocklin	Cindy Friedlander
Bret Miller	1859 Autumn Oak Way	Chico, CA	Bret Miller
Heather Pauline	1202 Sammy Way	Rocklin CA	Heather Pauline

W

④

21

Save Our Sheds Petition - July 29, 2011

It has been brought to my attention that the only remaining structures representing 150 years of granite quarry operations at 61 quarrying sites will be lost if the current council directive is carried out.

I respectfully request that members of the Rocklin City Council reconsider and rescind the directive that would result in disassembly and/or demolition of the Big Gun Monument and Cutting Sheds at this time and that the City allow one year for Community input regarding the fate of these Heritage Structures.

Name	Address		
Karla Gulderson	1160 Meadow Gate Dr	Roseville, CA	Karla Gulderson
Hffang DeCota	3909 Woodhouse Ct	Rocklin	95765
NE Jones	3409 Sugarloaf	Roseville	95650
Wendy Miller	4020 Silver Star Ct	Rocklin	95765
Miguel Demsey	3380 meadow way	Rocklin Ca	95677
Tom Guberson	2940 Verano Way	Rocklin, CA	95677
Lynette Cox	4455 Northstar	Rocklin	95677
John Cox	4455 Northstar	Rocklin	95677
James D. Agnew	1924 Hillcock St.	Rocklin, CA	
Connie Agnew	"	"	
Erin Bergh	5240 Rocklin Rd #872	Rocklin	
Seth Conway	" "	" "	
Paul James	2200 Misty Hollow	Rocklin	
Dax Novak	5185 5th St	Rocklin	
Sara Walker	4100 Merganser Ct.	Rocklin CA	781-3833
Yatchie Whittle	2666 Swindon Ct	Rocklin, CA	Yatchie Whittle
Wilee Bennett	c 870 san francisco	rocklin ca	Wilee Bennett
Anthony Brown	6215 Hillcock way	Rocklin	

# Save Our Sheds Petition – July 29, 2011

155 9/20/11 /

It has been brought to my attention that the only remaining structures representing 150 years of granite quarry operations at 61 quarrying sites will be lost If the current council directive is carried out.

I respectfully request that members of the Rocklin City Council reconsider and rescind the directive that would result in disassembly and/or demolition of the Big Gun Monument and Cutting Sheds at this time and that the City allow one year for Community Input regarding the fate of these Heritage Structures.

Name	Address	Name	Address
<del>King Johnson</del>	5300 5th St.	MARTIN MATSON	4455 Pacific St Rocklin
Danny Day	4640 NORTH STAR	FRANKLIN BURRIS	P.O. BOX 3486 ROCKLIN CA 95677
Ronda Davis	5205 Silver Peak Lane		
LARRY CRONIN	3300 QUARTZ CT		Rocklin, CA 95677
Ken Spotsburg	5987 Woodside Dr.		Rocklin, CA 95677
Castle Dussman	4912 Melvin Dr.		Carson, Ca. 95608
Katie Jordan	3451 Grand Park Dr		Carson, CA 95608
Sherrie Bender	2215 S. Walnut Ave	Christine Christman	1101 Whitney Ranch Place Rocklin, CA 95675
Scott Reams	3505 Maplewood Cir.		
Dyan Harmon	5501 Brace Road		
Ma Gallard	2701 ALEXIA way		
Wendy Hernandez	5949 Gillan Dr		
Bob Habian	3153 Stardust St.		
Joe Benquerel	2625 Riviera Cir		
JAIME MORGAN	6290 WESTWOOD DR		
MORRIS BLOES	6290 WESTWOOD DR		
Loque Lakey	5808 BAKER RD		
Elizabeth Butler	1745 Bottelbrush Cir Roseville, CA		
Scott Bunker	1745 Bottelbrush Cir Roseville, CA		
Suz Fuentes	5040 3rd St.		
L VICENCIO	Rocklin, CA		

# Save Our Sheds Petition – July 29, 2011

It has been brought to my attention that the only remaining structures representing 150 years of granite quarry operations at 61 quarrying sites will be lost if the current council directive is carried out.

I respectfully request that members of the Rocklin City Council reconsider and rescind the directive that would result in disassembly and/or demolition of the Big Gun Monument and Cutting Sheds at this time and that the City allow one year for Community input regarding the fate of these Heritage Structures.

Name	Address	Name	Address
PHILLIP BENTLEY	5335 2nd St. Rocklin, CA 95677		
Jamita M Bentley	5335 2nd St Rocklin, CA 95677		
<del>Phyllis Bentley</del>	<del>5335 2nd St Rocklin, CA 95677</del>		
Betty Barkford	Rocklin Road		
Hans B. Blain	6225 Rainer Ave		
Jean Blain	Rocklin		
Nancy Shaver	6225 Rainer Ave		
CARLA CAMPOS	5270 FRONT ST.		
RAUL CAMPOS	5270 Front St Rocklin, CA 95677		
DAVID BAKER	5213 Del Vista Way Rocklin 95765		
Teff Fortz	2001 Shadybrook Ln Rocklin		
Jamie Carlson	4473 White Oak Ct Rocklin		
My My	P.O. Box 22 Loomis, CA 95650		
Jally Hively	4610 Mt. Diablo Rd		
George Kennedy	10817 - Bayview Dr. RIVERSIDE CA.		
BRIAN TENKITT	5320 2nd St Rocklin, CA 95677		
Vickie Ignant	5320 2nd St, Rocklin		
Andy Carter	5561 Paragon Ct Rocklin CA 95677		
Janet Currien	5885 Bryce Way Rocklin, Ca. 95677		
John Downs	320 Gold Hill Rd NEWCASTLE CA		
Tim Madala	6540 DELWOOD CT Rocklin CA 95677		

MITCH NICKELER

# Save Our Sheds Petition – July 29, 2011

It has been brought to my attention that the only remaining structures representing 150 years of granite quarry operations at 61 quarrying sites will be lost if the current council directive is carried out.

I respectfully request that members of the Rocklin City Council reconsider and rescind the directive that would result in disassembly and/or demolition of the Big Gun Monument and Cutting Sheds at this time and that the City allow one year for Community input regarding the fate of these Heritage Structures.

Name	Address	Name	Address
Christian Cusleton	5295 2nd St.	Kate Cusleton	5295 2nd street
Tracy Barkhurst	5090 4th St Rocklin CA 95767	Lynn Barkhurst	5090 4th St Rocklin CA 95767
Chelsea Burke	5435 Runkala Rd	John Burke	5435 Runkala Rd Rocklin CA 95767
Andrea Towle	5265 Oakwood Ct	Don Towle	5265 Oakwood Ct Rocklin
TEBA CARTER	5561 Paragon Ct. ROCKLIN	Cindy Bauman	3584 Nevada St.
JAMES LOUG	5120 2nd St. Rocklin		
Laurie Deuschel	5120 2nd Street Rocklin		
John Peterson	3410 Oakbrook Dr. Rocklin CA		
Pam Anderson	3898 Butler Cr Rocklin	John Anderson	3898 Butler Cr Rocklin CA
Stacy Daniels	3591 Nevada Rocklin		
Brenda Kokotan	5150 4th		
Kevin Garbi	3440 Lucky Ln Rocklin		
Lyn Rafferty	5618 Delano Way Rocklin		
Patricia Halson	3655 Sunset #88 Rocklin		
Dave Rafferty	5618 Delano Way Rocklin		
Juslie Nemer	5175 4th St Rocklin		
Tom Wells	3760 Oakdale Ct	Thomas Wells	
<del>Paul</del>	<del>4445 Airport</del>	<del>David Cox</del>	<del>Same</del>
<del>John</del>	<del>4030 Schuss</del>	<del>Ron Fig</del>	
<del>Jim Halms</del>	<del>3641 Beckel Auburn</del>		
DANIEL EFER	5730 Rural Cr	Rocklin CA	

2  
2  
2  
2  
2

(21)

(21)

# Save Our Sheds Petition – July 29, 2011

6

It has been brought to my attention that the only remaining structures representing 150 years of granite quarry operations at 61 quarrying sites will be lost if the current council directive is carried out.

I respectfully request that members of the Rocklin City Council reconsider and rescind the directive that would result in disassembly and/or demolition of the Big Gun Monument and Cutting Sheds at this time and that the City allow one year for Community input regarding the fate of these Heritage Structures.

Name	Address	Name	Address
Robin Sparks	2226 Pinnacles Dr. <sup>Rocklin</sup>	EVERETT Hill	2880 MIDAS CRT ROCKLIN, CA 95677
Eric Martin	4483 White Oak Ct <sup>Rocklin</sup>		
Jenni Leopold	4033 Racetrack Circle <sup>Rocklin</sup>		
Barbara Deely	2317 Rebecca Ct <sup>Rocklin</sup>		
Anabela Das Santos	2103 Mendrian Way <sup>Rocklin</sup>		
Rhea Ann Dandenzum	4436 Sandhill Dr. Rocklin		
Mark Wanda	1436 Sandhill Dr. Rocklin		
NICK KIRK	5508 Graham Ct Rocklin		
Andrea Kelsey	5757 Shaman Bay Dr Rocklin		
Justina Irwin	4245 Castlewood St. Rocklin		
Felicia Damone	2114 Arnold Dr.		
John Damone	2114 Arnold Dr		
Craig Green	5912 Percheron Ct		
Kathy Green	5912 Percheron Ct		
Todd Olson	4557 Cardwell Av		
Ed Hoffmann	4446 Fairview Circle		
Jon White	2036 Denton Ct.		
Teri White	2036 Denton Ct		
RONALD Bassett	5076 MIDAS AVE		
Bill YORLEN	2871 Margarita Ln. Lovell		
Queen Khoury	4534 Shenandoah Rd Rocklin		

dit





# Save Our Sheds Petition – July 29, 2011

*[Handwritten signature]*

It has been brought to my attention that the only remaining structures representing 150 years of granite quarry operations at 61 quarrying sites will be lost if the current council directive is carried out.

I respectfully request that members of the Rocklin City Council reconsider and rescind the directive that would result in disassembly and/or demolition of the Big Gun Monument and Cutting Sheds at this time and that the City allow one year for Community input regarding the fate of these Heritage Structures.

Ken Runyan 3686 C St Rocklin Ca 95677

Name	Address	City	Zip
SANDRA DAVIES	5300 2 <sup>ND</sup> STREET	ROCKLIN, CA	95677 -
S. J. Mudgett	5477 LOSTAHO	ROCKLIN	95677
Jean Schuman	7028 Pembroke Way	Rocklin	95677
Don Schuman	7028 PIMBROKE WY	ROCKLIN	95677
SUZTUENTES	5040 3rd St	Rocklin, CA	95677
<del>Andy</del> Andy Minton	5500 Asoiler	Rocklin, CA	95677
Heidi Minton	5190 Rocklin Rd	Rocklin Ca	95677
Daniel Eckhart	5190 2nd St	Rocklin Ca	95677
Samantha Muta	5190 2nd St	Rocklin Ca	95677
Vesica Minton	5190 2nd St	Rocklin Ca	95677
John Muta	3605 Rocklin Rd	Rocklin Ca	95677
Doug Arnold	3424 Chatham St	Rocklin Ca	95765
Ryan Arnold	3424 Chatham St	Rocklin Ca	95765
Matt Carter	3675 Mountainview	Rocklin	95677
Marissa DeKearz	5011 Derby Rd	Rocklin	95675
Marcus Wilberger	3530 Parkview Ln	Rocklin	95677
AARON GOWER	5500 Treasure	Rocklin	95765
Lori Beene	3585 Mountainview	Rocklin	95677
John Wilberger	3530 Parkview Ln	Rocklin	95677
Doug McCaleb	2952 PASADA RD	CAMERON PARK	95682
John Patrikios	4665 Str. Street	Rocklin	95677
Chris Felt	19448 Center St	Castro Valley	94546

*[Handwritten signature]*





Eric Beckley 1524 Ridge Creek Way Rsvl  
Jason Avelley 8521 Arrowroot Circle - Roseville  
Saraah Pabon KY Del A. Ngel 2506 California Pve Rsvl