

United States Department of the Interior
National Park Service

NATIONAL REGISTER OF HISTORIC PLACES
REGISTRATION FORM



718

This form is for use in nominating or requesting determinations for individual properties and districts. See instructions in How to Complete the National Register of Historic Places Registration Form (National Register Bulletin 16A). Complete each item by marking "x" in the appropriate box or by entering the information requested. If any item does not apply to the property being documented, enter "N/A" for "not applicable." For functions, architectural classification, materials, and areas of significance, enter only categories and subcategories from the instructions. Place additional entries and narrative items on continuation sheets (NPS Form 10-900a). Use a typewriter, word processor, or computer, to complete all items.

1. Name of Property

historic name MANN MANOR

other names/site number FMSF#PO7130

2. Location

street & number 325 West Main Street

N/A ☐ not for publication

city or town Bartow

N/A ☐ vicinity

state Florida code FL county Polk code 105 zip code 33830

3. State/Federal Agency Certification

As the designated authority under the National Historic Preservation Act, as amended, I hereby certify that this ☒ nomination ☐ request for determination of eligibility meets the documentation standards for registering properties in the National Register of Historic Places and meets the procedural and professional requirements set forth in 36 CFR Part 60. In my opinion, the property ☒ meets ☐ does not meet the National Register criteria. I recommend that this property be considered significant ☐ nationally ☐ statewide ☒ locally. (☐ See continuation sheet for additional comments.)

Signature of certifying official/Title

Date

Florida Department of State, Division of Historical Resources, Bureau of Historic Preservation
State or Federal agency and bureau

In my opinion, the property ☐ meets ☐ does not meet the National Register criteria. (☐ See continuation sheet for additional comments.)

Signature of certifying official/Title

Date

State or Federal agency and bureau

4. National Park Service Certification

I hereby certify that the property is:

Signature of the Keeper

Date of Action

- ☐ entered in the National Register
☐ See continuation sheet
- ☐ determined eligible for the National Register
☐ See continuation sheet.
- ☐ determined not eligible for the National Register
☐ See continuation sheet.
- ☐ removed from the National Register.
- ☐ other, (explain) _____

Mann Manor
Name of Property

Polk Co., FL
County and State

5. Classification

Ownership of Property

(Check as many boxes as apply)

- ☒ private
☐ public-local
☐ public-State
☐ public-Federal

Category of Property

(Check only one box)

- ☒ buildings
☐ district
☐ site
☐ structure
☐ object

Number of Resources within Property

(Do not include any previously listed resources in the count)

Contributing	Noncontributing	
2	0	buildings
0	0	sites
0	0	structures
0	0	objects
2	0	total

Name of related multiple property listings

(Enter "N/A" if property is not part of a multiple property listing.)

"N/A"

Number of contributing resources previously listed in the National Register

0

6. Function or Use

Historic Functions

(Enter categories from instructions)

DOMESTIC/ dwelling

Current Functions

(Enter categories from instructions)

COMMERCE, TRADE/ office

7. Description

Architectural Classification

(Enter categories from instructions)

Late 19th & 20th Century Revivals; Colonial Revival

Materials

(Enter categories from instructions)

foundation CONCRETE
walls WOOD

roof ASPHALT
other LEADED GLASS

Narrative Description

(Describe the historic and current condition of the property on one or more continuation sheets.)

United States Department of the Interior
National Park Service

NATIONAL REGISTER OF HISTORIC PLACES
CONTINUATION SHEET

Section number 7 Page 1 MANN MANOR, BARTOW, POLK
COUNTY, FLORIDA

SUMMARY:

The Mann Manor is located at 325 Main Street, Bartow, Polk County, Florida. The house is a ca. 1925 two-story Colonial Revival Style building with a side gable roof, and an exterior brick chimney. The exterior is surfaced with wide cedar horizontal siding, and the symmetrically arranged windows mostly have 6/6 double-hung wooden sashes. The two-story main entrance portico is supported by four round columns with Ionic capitals. The main entrance has a leaded glass fan-light transom and two half-high leaded side lights.

SETTING

The house and outbuilding occupy a wooded property in downtown Bartow, two blocks west of the historic County Court House building. Commercial properties line Main Street running east/west. Residential properties are on the blocks to the south. The downtown is relatively flat land. Looking west from Floral Avenue, the Mann Manor includes the two-story main house, and to the south a single-story former garage and efficiency residence. There is a slight slope downward from Floral Avenue to the house (Photo #1).

PHYSICAL DESCRIPTION

Exterior

The exterior surface is wide cedar horizontal siding. The side gabled roof has composition shingles.

The east facade contains a porch with four tapered two-story wooden columns supporting a flat portico roof (Photo #2). This roof has an entablature with dentils and cornice. There are two wooden box-style engaged columns at the edges of the porch. All columns are capped with Ionic capitals, and the original wooden bases are exposed. The porch has a whole-brick floor with wrought iron hand-rails. A leaded glass elliptical fanlight transom is above the entry door, with leaded glass half sidelights (Photo #3). These sidelights and the entry door have recessed panels and decorative molding. The symmetrical facade contains original double hung 6/6 sash windows and original paired wooden shutters. Above the entry on the second story is a small, curved balcony with a wrought iron railing, and

United States Department of the Interior
National Park Service

NATIONAL REGISTER OF HISTORIC PLACES
CONTINUATION SHEET

Section number 7 Page 2 **MANN MANOR, BARTOW, POLK
COUNTY, FLORIDA**

narrow French doors comprised of five lights each, flank a 15-light fixed glass panel in center (Photo #3).

The north elevation has a gable end with cornice returns, and a large brick chimney extends through the center eaves of the roof (Photo #4). The chimney displays a change in bricks probably reflecting the extended period of construction. The chimney is flanked by louvered vents in the gable. The original double hung 8/8 windows and original wooden shutters are present. The cornice returns and eaves have dentils.

The west elevation contains a one-story extension that spans much of the elevation (Photo #5). The roof is a low-angle gable, and the exterior has horizontal siding consistent with the rest of the house. Windows in the extension are 6/9 double-hung sashes with louver wooden shutters. The one-story extension has a wooden door with transom. Two windows with 6/6 sashes with shutters flank the extension on the first story, and are symmetrically arranged across the second story.

The south elevation has a gable end with cornice returns (Photo #6). The first story has a flat roofed porch converted from a porte cochere, supported by two round columns, a door with rectangular transom, and six single windows without shutters. The second story has two French doors and three windows with shutters. To accommodate accessibility requirements the main façade porch was extended to wrap the southeast corner and extend across the south elevation. A ramp from the west accesses the porch, and non-historic metal exterior stairs rise to the second story.

Interior

Original red oak flooring is present throughout the house. The main living spaces on the first floor retain chair rails, picture and crown molding.

Through the main, east entrance is a large foyer with a chandelier and a double-L staircase rising from the north (Photo #7). The stair treads are of red oak. Under the stairs is a door to a central, east/west hallway. To the south of the foyer is an office that had been the formal dining room¹ entered through arched French doors with 21 lights (Photo #8). The

¹ Originally this room served as the family's formal dining room.

United States Department of the Interior
National Park Service

NATIONAL REGISTER OF HISTORIC PLACES
CONTINUATION SHEET

Section number 7 Page 3 **MANN MANOR, BARTOW, POLK
COUNTY, FLORIDA**

room includes built in book cases with original leaded glass doors, and cabinets with paneled doors (Photo #9). This room also includes an attached bathroom in the southeast corner. To the north of the foyer is a meeting room that had been the formal living room, also entered through arched French doors (Photo #10). This room spans east and west the main block of the home. The focal point of the room is an operational fireplace and mantle centered in the north wall (Photo #11). At the southwest corner of the living room is a pair of French doors entering into the dining room that currently serves as a meeting room² (Photo #12). The room contains original hand tooled crown molding. The dining room has a built in case with original restored leaded glass doors. Below the case with leaded glass doors is an open shelf and cabinet with paneled doors. To the south across the central hall is a kitchen area, storage space, and two additional bathrooms. Original picture and crown molding is present in some of these spaces. The one-story west extension that had been a casual living area contains two offices and storage.

The second floor has a sitting area at the mezzanine level and seven office areas of varying sizes. To the north of the stairs is the first office, which has a fireplace³ (Photo #13). Though not original to the home, the mantle has been constructed to be consistent with the other architectural features and time period of the home. Crown molding in all but one of these second floor rooms is original, as are the picture molding and chair rails. One of the upstairs offices has oak parquet flooring (c.1950s).⁴ Two of the other rooms have exterior exit doors onto the fire escape above the south side porte cochere, and both have access to a fourth bathroom (Photo #14) and a kitchenette area. One of these southern offices is utilized as the library and research room with oak book cabinets. All rooms have radiator boxes and grills.

ALTERATIONS

The hand rail and balustrade for the stairway in the foyer were not present when the home was purchased in 1999, and were recreated in a fashion designed to be consistent with the original and time period. Though not original to the home, the mantle on the second floor

² Originally this room served as the family's informal dining room.

³ Originally this room was the master bedroom.

⁴ Originally this room was the master bath, and although the original flooring is present, it was covered by the existing parquet flooring.

**United States Department of the Interior
National Park Service**

**NATIONAL REGISTER OF HISTORIC PLACES
CONTINUATION SHEET**

Section number 7 Page 4 **MANN MANOR, BARTOW, POLK
COUNTY, FLORIDA**

has been constructed to be consistent with the first floor mantle and other architectural features of the home. The cabinets in the dining room and eastern office have restored leaded glass doors which had been removed from the house by the Mann family. For handicapped accessibility, the porte cochere was modified into a porch that extended around the southeast corner of the home to connect with the main porch, and the metal exterior staircase to the second story was added.

OUTBUILDING

The outbuilding known as the carriage house, was built at the time of the main house. It is a one-story rectangular, front gabled building, built on grade with horizontal wooden siding as the house. Gable returns are on the north and south elevations. Single doors are present on the north façade (Photo #15), and west elevation of the building (Photo #16). On the north façade are also two windows, and single 6/6 wooden sash, and a second composed of a pair of 6/6 sashes flanked by shutters that match the house. The south elevation has a central door (sealed) flanked by single sash windows. The interior has no finished wall, and consists of five functional spaces including a restroom (Photo #17).

8. Statement of Significance

Applicable National Register Criteria

(Mark "x" in one or more boxes for the criteria qualifying the property for National Register listing.)

- ☐ **A** Property is associated with events that have made a significant contribution to the broad patterns of our history.
- ☐ **B** Property is associated with the lives of persons significant in our past.
- ☒ **C** Property embodies the distinctive characteristics of a type, period, or method of construction or represents the work of a master, or possesses high artistic values, or represents a significant and distinguishable entity whose components lack individual distinction.
- ☐ **D** Property has yielded, or is likely to yield information important in prehistory or history.

Criteria Considerations

(Mark "x" in all the boxes that apply.)

Property is:

- ☐ **A** owned by a religious institution or used for religious purposes.
- ☐ **B** removed from its original location.
- ☐ **C** a birthplace or grave.
- ☐ **D** a cemetery.
- ☐ **E** a reconstructed building, object, or structure.
- ☐ **F** a commemorative property.
- ☐ **G** less than 50 years of age or achieved significance within the past 50 years

Narrative Statement of Significance

(Explain the significance of the property on one or more continuation sheets.)

9. Major Bibliographical References

Bibliography

Cite the books, articles, and other sources used in preparing this form on one or more continuation sheets.)

Previous documentation on file (NPS):

- ☐ preliminary determination of individual listing (36 CFR 36) has been requested
- ☐ previously listed in the National Register
- ☐ previously determined eligible by the National Register
- ☐ designated a National Historic Landmark
- ☐ recorded by Historic American Buildings Survey

- ☐ recorded by Historic American Engineering Record

Areas of Significance

(Enter categories from instructions)

ARCHITECTURE

Period of Significance

ca.1925

Significant Dates

ca.1925

Significant Person

N/A

Cultural Affiliation

N/A

Architect/Builder

unknown

Primary location of additional data:

- ☒ State Historic Preservation Office
- ☐ Other State Agency
- ☐ Federal agency
- ☐ Local government
- ☐ University
- ☐ Other

Name of Repository

United States Department of the Interior
National Park Service

NATIONAL REGISTER OF HISTORIC PLACES
CONTINUATION SHEET

Section number 8 Page 1 **MANN MANOR, BARTOW, POLK
COUNTY, FLORIDA**

SUMMARY

The Mann Manor is nominated to the National Register for its local significance under Criterion C in the area of Architecture. Begun in ca. 1925, the two-story house is an excellent example of Colonial Revival architecture, with distinguishing features both on the exterior and the interior.

HISTORIC CONTEXT

George W. Mann (1865 – 1935), was the son of George E. Mann, a physician, and A.V. Mann of Brooks, Georgia. Mann was a progressive cattleman who raised huge herds in South Florida. He is credited with being the first cattleman to build and use dipping vats in Polk County to protect against tick born cattle fever. He also brought Brahman cattle into Basinger, near Lake Okeechobee, where the Mann family owned huge grazing acreage prior to his relocation to Bartow. Brahmans were instrumental in breeding heavier weight cattle that adapted well to the Florida climate. By raising grass-fed cattle, he shortened full-weight cattle maturity (three-hundred pounds dressed out) by three to four years. He innovated feeding techniques by hauling cattle to graze in Madison County, and hauling Madison-grown corn and bean feed to Polk County. Mann ran his own wholesale butcher business in Fort Myers.¹

He sometimes lived in Fort Myers, where in 1901, he married a local woman, Kate Randall. Later in Bartow, she was locally known as "Kate Dear," and was active in the Daughters of the American Revolution, and Holy Trinity Episcopal Church. She was noted for her extreme care with the landscape and plantings at their home, many of which remain today.²

After moving to Bartow the Manns lived in a vernacular home on a piece of their property directly west of this nominated lot. Kate dreamed of building a fine home, and ca.1925 construction on what would be the Manor was begun on the east side of the property, facing Floral Avenue. The house apparently was constructed over various periods up to

¹ George H. Dacy, *Four Centuries of Florida Ranching*, St. Louis: Britt Printing Company, 1940, p.181-83.

² *Polk County Record*, May 7, 1935; Katherine Waggaman, Betsey Ravenel, George Mann, Jr., interviews, 2001, 1999, 2003.

United States Department of the Interior
National Park Service

NATIONAL REGISTER OF HISTORIC PLACES
CONTINUATION SHEET

Section number 8 Page 2 **MANN MANOR, BARTOW, POLK
COUNTY, FLORIDA**

the 1930s. There are changes in the brick on the chimney. George Mann died suddenly on May 6, 1935, of a heart attack. He probably never lived in the house. Shortly after the time of his death a small sink hole developed under the rear, west side of the house, and the building was moved on logs westerly on the lot. Mrs. Mann occupied the house until she died in 1976.³

ARCHITECTURAL CONTEXT

The **Colonial Revival Style** of home construction was popular from 1880 to 1955. The style derived from an admiration of early American, English and Dutch construction, particularly Georgian and Adam prototypes. The influential architectural firm of McKim, Meade, White, and Bigelow toured New England, in 1877, to study first hand colonial buildings. Landmark houses they constructed in the 1880s were not copies, but syntheses of their discoveries. Publications of illustrated studies of colonial homes spread an understanding and appreciation of the homes throughout the nation, prompting a trend to more imitative copies. The style was simplified during the Great Depression years. Colonial Revival Style is characterized by rectangular two-story construction, usually gable roofs, and sometimes hip, accented by prominent front doors centered on the façade. The entry usually includes a paneled front door, a decorative pediment, sidelights, transom or fan-light transom. The façade usually has a symmetrical and balanced window arrangement. Windows are filled with double-hung sashes with multiple lights, and sashes are often paired. Porches are usually small gabled porticos to shelter the main entrance, but in the early twentieth century one-story full width porches became more frequent. Chimneys were engaged at the gable ends and were often broad in proportion. Some detail elements often found include dentils at the eaves, quoins, and entrances sometimes accented with pediments supported by Classical columns.⁴

ARCHITECTURAL SIGNIFICANCE

The Mann Manor is a well-detailed, large example of Colonial Revival architecture. The

³ *Polk County Democrat*, February 1976; Cal Adams, Katherine Waggaman, Betsey Ravenel, George Mann, Jr., Jackie Weeks, interviews, 1998-2003, 2001, 1999, 2003, 200.

⁴ Virginia and Lee McAlester, *A Field Guide to American Houses*, (New York, Alfred A. Knopf, 1986), p. 139-142, 153-157.

**United States Department of the Interior
National Park Service**

**NATIONAL REGISTER OF HISTORIC PLACES
CONTINUATION SHEET**

Section number 8 Page 3 **MANN MANOR, BARTOW, POLK
COUNTY, FLORIDA**

home is in excellent condition, and has retained most of its original character-defining elements. The selection of the style and detail elements reflects the choices of the owner, Mrs. Kate Mann.

The form of the Mann Manor is a side-gable rectangle, the most frequent form of the style. The exterior is horizontal cedar siding, a more common revival material in the North. A broad brick exterior chimney is centered at the north gable. Multi-pane window sashes are symmetrically arranged on all elevations, and include wooden shutters. Cornices have dentils, and large cornice returns are at the north and south gable ends. Wooden louvered vents are within both gables. The northern arched vent is divided on either side of the chimney, and the southern vent is a three-part arched, Palladian Styled vent. The main façade is defined prominently with a two-story, flat roofed portico that spans most of the elevation. The portico is supported by four, tapered, round columns with capitals with spiral volutes, and pilasters with capitals join the roof to the wall. The main entry has a paneled wooden door, a pair of leaded-glass half sidelights, and a leaded-glass fanlight transom. The entry installation is further accented with recessed panel accents and fluted trim. A small curved balcony is directly over the main entrance on the second story. Two five-light narrow doors flank a fifteen-light stationary panel at the balcony.

The interior features high ceilings and crown and picture moldings. Arched original French doors provide entrance to the rooms off the foyer and an additional downstairs room. Built-in cabinets, complete with the crafted leaded glass doors are in place in two of the downstairs main rooms. The staircase and railings contain narrow, turned balusters and newels. Built-in radiator boxes and grills used with the steam heating system of the home are present. Brass and crystal chandeliers, some including ceiling medallions, are in the main rooms.

The Mann Manor is a local downtown landmark and retains its architectural integrity to a high degree.

United States Department of the Interior
National Park Service

NATIONAL REGISTER OF HISTORIC PLACES
CONTINUATION SHEET

Section number 9 Page 1 MANN MANOR, BARTOW, POLK
COUNTY, FLORIDA

BIBLIOGRAPHY

- Akerman, Joe A. Jr., Florida Cowman, A History of Floirda Cattle Raising, 5th Edition, Kissimmee, Florida: Florida Cattleman's Association, Vol. xiii, 1976.
- Dacy, George H., Four Hundred Years of Florida Ranching, (St. Louis: Britt Printing Company, 1940).
- Historic Bartow, "History & Heritage," Chamber of Commerce (2003).
- Lakeland Ledger, "Bartow's Breakout," September, 1999.
- "Courthouse History," September, 1998.
- "History in the Making," September, 1998.
- McAlester, Virginia and Lee, A Field Guide to American Houses, (New York: Alfred A. Knopf, 1986).
- Oak Hill Cemetery, Bartow, Polk Co., Florida, (Mann grave marker).
- Otto, John S., "Traditional Cattle - Herding Practices in South Florida," Journal of American Folklore, Vol 97, (1984).
- The Polk County Democrat. January, 1999; 1983 (obit Robert Carriger); 1980 (purchase by Carrigers; February, 1976, (obituary Kate Mann).
- The Polk County Record, May 7, 1935, (obituary George Mann).
- Tampa Tribune, "History Takes Stage at Courthouse," September, 1998.

Personal Interviews

All interviews are by Debra Sutton.

Cal Adams, Bartow City Commissioner, Mayor, previous contractor for Mrs. Mann and

**United States Department of the Interior
National Park Service**

**NATIONAL REGISTER OF HISTORIC PLACES
CONTINUATION SHEET**

Section number 9 Page 2 **MANN MANOR, BARTOW, POLK
COUNTY, FLORIDA**

subsequent owner, Ann Carriger. Numerous interviews, 1998-2003.

Mrs. Ed Brook, daughter to G. W. Mann, Jr., October, 1998. Mrs. Brook had the original leaded cabinet doors from the dining room and parlor. The doors were restored and re-installed in the manor.

Clarence Boswell, Esquire, attorney to Mrs. Mann, May, 2000.

Mrs. Katherine Mann Waggaman, daughter, 2000-2001.

Betsey Ravenel, oldest daughter, February 2, 1999.

George W. "Buck" Mann, Jr., son, January 2003.

Peggy Mann, former wife of G. W. Mann, Jr., September 2000.

Jackie Weeks, friend of the Mann family, Fall, 2000.

Mann Manor
Name of Property

Polk Co., FL
County and State

10. Geographical Data

Acres of Property 0.65 acre

UTM References

(Place additional references on a continuation sheet.)

1	1	7	4	1	7	2	4	0	3	0	8	5	7	6	0
Zone	Easting		Northing												
2															

3															
Zone	Easting		Northing												
4															

☐ See continuation sheet

Verbal Boundary Description

(Describe the boundaries of the property on a continuation sheet.)

Boundary Justification

(Explain why the boundaries were selected on a continuation sheet.)

11. Form Prepared By

name/title Sutton, Debra/Robert O. Jones, Historic Preservationist

organization Bureau of Historic Preservation date August 2011

street & number 500 South Bronough Street telephone 850-245-6333

city or town Tallahassee state FL zip code 32399-0250

Additional Documentation

Submit the following items with the completed form:

Continuation Sheets

Maps

A USGS map (7.5 or 15 minute series) indicating the property's location.

A Sketch map for historic districts and properties having large acreage or numerous resources.

Photographs

Representative black and white photographs of the property.

Additional Items

(check with the SHPO or FPO for any additional items)

Property Owner

(Complete this item at the request of SHPO or FPO.)

name SKS Investments attn: Debra Sutton

street & number 325 West Main Street telephone 863-533-8912

city or town Bartow state Florida zip code 33830

Paperwork Reduction Act Statement: This information is being collected for applications to the National Register of Historic Places to nominate properties for listing or determine eligibility for listing, to list properties, and amend listings. Response to this request is required to obtain a benefit in accordance with the National Historic Preservation Act, as amended (16 U.S.C. 470 et seq.).

Estimated Burden Statement: Public reporting burden for this form is estimated to average 18.1 hours per response including time for reviewing instructions, gathering and maintaining data, and completing and reviewing the form. Direct comments regarding this burden estimate or any aspect of this form to the Chief, Administrative Services Division, National Park Service, P.O. Box 37127, Washington, DC 20013-7127, and the Office of Management and Budget, Paperwork Reduction Projects (1024-0018), Washington, DC 20503.

**United States Department of the Interior
National Park Service**

**NATIONAL REGISTER OF HISTORIC PLACES
CONTINUATION SHEET**

Section number 10 Page 1 **MANN MANOR, BARTOW, POLK SITE,
COUNTY, FLORIDA**

VERBAL BOUNDARY DESCRIPTION

Original Bartow PB 3 PG 15 S5/6 T30 R25 BLK D Lots 1 & 2 & that PT of closed rd
lying S of Lot 2 and N of S SUB LINE PER OR 2037-786
Polk County Property Appraiser parcel # 25-30-05-372500-022010

BOUNDARY JUSTIFICATION

The National Register boundary encompasses the land historically associated with the
Mann Manor.

**United States Department of the Interior
National Park Service**

**NATIONAL REGISTER OF HISTORIC PLACES
CONTINUATION SHEET**

Section number Photos Page 1 **MANN MANOR, BARTOW, POLK
COUNTY, FLORIDA**

PHOTOGRAPHIC LIST

1. Mann Manor, 325 West Main Street, Bartow
2. Polk County, Florida
3. Matthew J. Kovichak
4. August, 2002
5. SKS Investments, 325 West Main Street
6. South and east elevations of Mann Manor, looking northwest
7. Photo #1 of 17

Items 1 – 5 are the same for the following photographs.

6. East façade, looking west
7. Photo #2 of 17

6. Detail of main entry, looking west
7. Photo #3 of 17

6. North elevation, looking southwest
7. Photo #4 of 17

6. West elevation, looking southeast
7. Photo #5 of 17

6. South elevation, looking northwest
7. Photo #6 of 17

6. Stairwell, looking northeast
7. Photo #7 of 17

6. View from entry to formal dining room, looking east
7. Photo #8 of 17

**United States Department of the Interior
National Park Service**

**NATIONAL REGISTER OF HISTORIC PLACES
CONTINUATION SHEET**

Section number Photos Page 2 **MANN MANOR, BARTOW, POLK
COUNTY, FLORIDA**

- 6. View from dining room toward entry, looking north
- 7. Photo #9 of 17

- 6. Great Room, looking east
- 7. Photo #10 of 17

- 6. Great Room fireplace, looking north
- 7. Photo #11 of 17

- 6. Great Room and French doors in dining room, looking west
- 7. Photo #12 of 17

- 6. Second floor mezzanine into north office, looking north
- 7. Photo #13 of 17

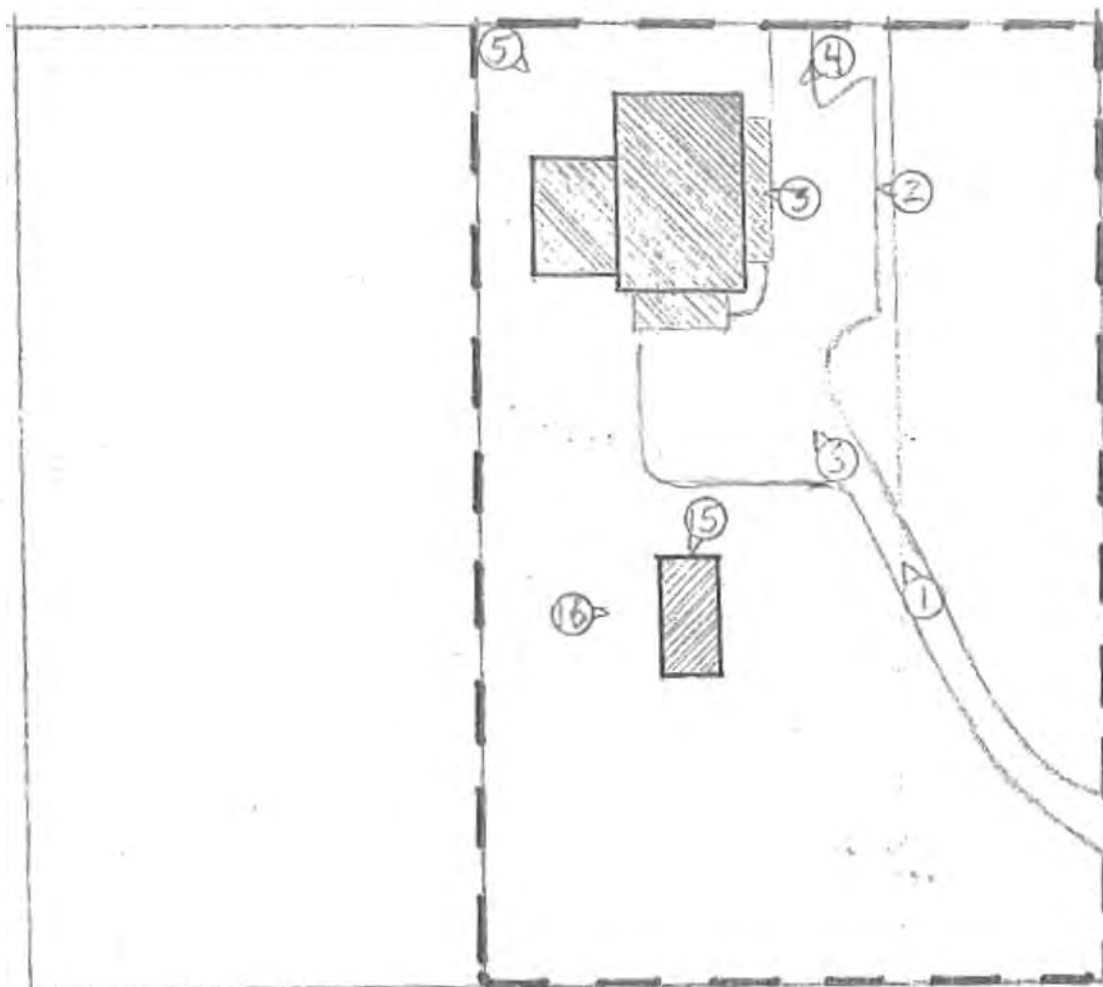
- 6. Second floor bathroom, looking east
- 7. Photo #14 of 17

- 6. Carriage House, looking south
- 7. Photo #15 of 17

- 6. Carriage House, west elevation, looking east
- 7. Photo #16 of 17

- 6. Carriage House interior, looking south
- 7. Photo #17 of 17

MAIN ST.



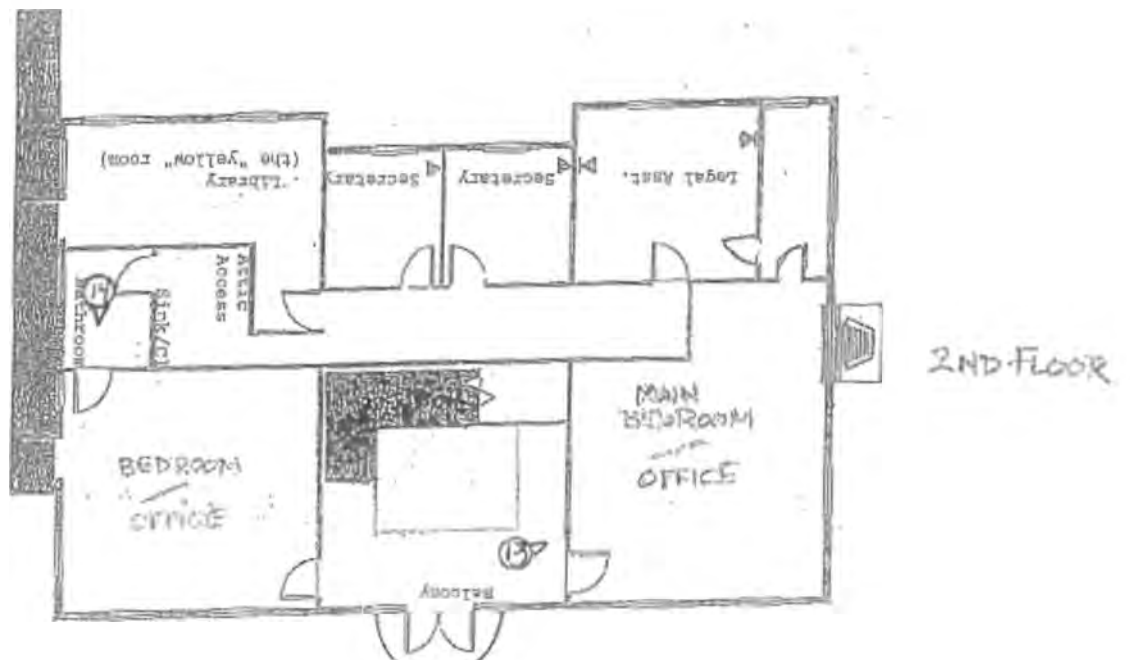
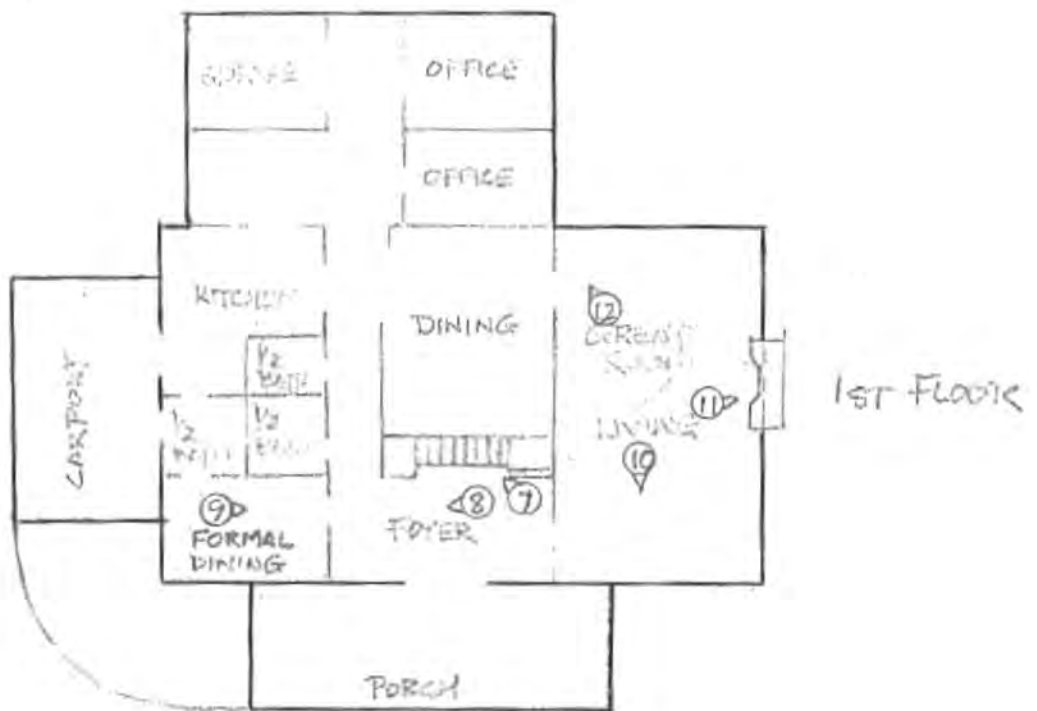
FLORAL AVE.

PARCELS OWNED BY
SKS INVESTMENTS

MANN MANOR
Bartow, Polk County, Florida

Site Map & Photo Diagram
NTS



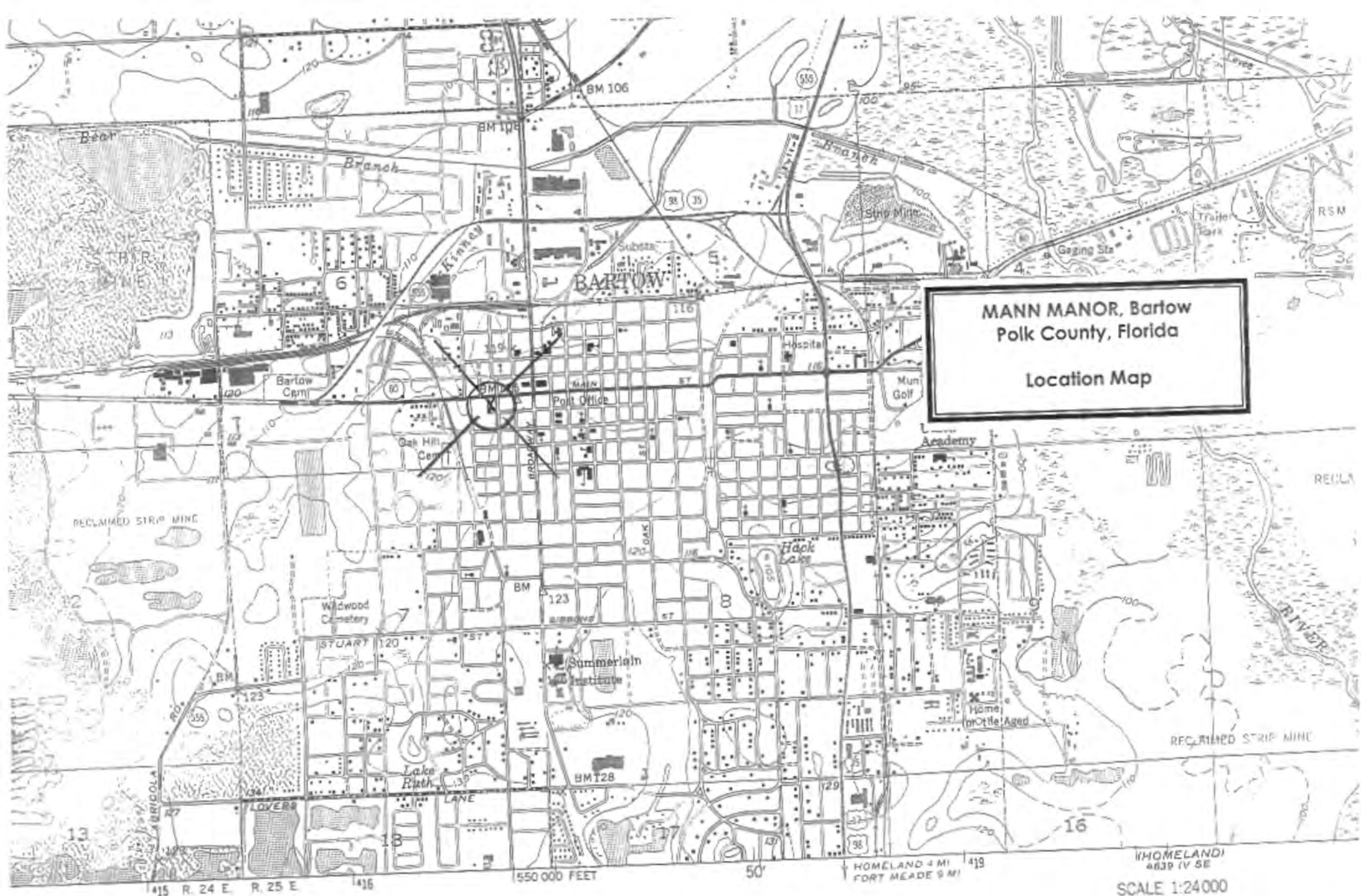


MANN MANOR
 Bartow, Polk County, Florida
 House Floor Plan & Photo Diagram
 NTS





MANN MANOR
Bartow, Polk County, Florida
Out Building & Photo Diagram
NTS



ed, and published by the Geological Survey
3S, USC&GS, and Florida Geodetic Survey

ainage in part compiled from
aphs taken 1941 and 1947
plane-table methods 1949

UNITED STATES DEPARTMENT OF THE INTERIOR
NATIONAL PARK SERVICE

NATIONAL REGISTER OF HISTORIC PLACES
EVALUATION/RETURN SHEET

REQUESTED ACTION: NOMINATION

PROPERTY NAME: Mann Manor

MULTIPLE
NAME:

STATE & COUNTY: FLORIDA, Polk

DATE RECEIVED: 08/26/11 DATE OF PENDING LIST: 09/21/11
DATE OF 16TH DAY: 10/06/11 DATE OF 45TH DAY: 10/11/11
DATE OF WEEKLY LIST:

REFERENCE NUMBER: 11000718

REASONS FOR REVIEW:

APPEAL: N DATA PROBLEM: N LANDSCAPE: N LESS THAN 50 YEARS: N
OTHER: N PDIL: N PERIOD: N PROGRAM UNAPPROVED: N
REQUEST: Y SAMPLE: N SLR DRAFT: N NATIONAL: N

COMMENT PERIOD WAIVED: N REDUCED: Y

☐ ACCEPT ☒ RETURN ☐ REJECT _____ DATE

ABSTRACT/SUMMARY COMMENTS:

Hold for Signature Page

RECOM./CRITERIA *Return* *10/11/2011*
REVIEWER *[Signature]* DISCIPLINE _____
Phone _____ Date _____

DOCUMENTATION see attached comments Y/N *[initials]* see attached SLR Y/N *[initials]*

If a nomination is returned to the nominating authority, the nomination is no longer under consideration by the National Park Service.

11000718

RECEIVED 2280 OMB No. 1024-0018 OCT 13 2011 NAT. REGISTER OF HISTORIC PLACES NATIONAL PARK SERVICE
--

United States Department of the Interior
National Park Service

**NATIONAL REGISTER OF HISTORIC PLACES
REGISTRATION FORM**

This form is for use in nominating or requesting determinations for individual properties and districts. See instructions in How to Complete the National Register of Historic Places Registration Form (National Register Bulletin 16A). Complete each item by marking "x" in the appropriate box or by entering the information requested. If any item does not apply to the property being documented, enter "N/A" for "not applicable." For functions, architectural classification, materials, and areas of significance, enter only categories and subcategories from the instructions. Place additional entries and narrative items on continuation sheets (NPS Form 10-900a). Use a typewriter, word processor, or computer, to complete all items.

1. Name of Property

historic name MANN MANOR

other names/site number FMSF#PO7130

2. Location

street & number 325 West Main Street N/A ☐ not for publication

city or town Bartow N/A ☐ vicinity

state Florida code FL county Polk code 105 zip code 33830

3. State/Federal Agency Certification

As the designated authority under the National Historic Preservation Act, as amended, I hereby certify that this ☒ nomination ☐ request for determination of eligibility meets the documentation standards for registering properties in the National Register of Historic Places and meets the procedural and professional requirements set forth in 36 CFR Part 60. In my opinion, the property ☒ meets ☐ does not meet the National Register criteria. I recommend that this property be considered significant ☐ nationally ☐ statewide ☒ locally. (☐ See continuation sheet for additional comments.)

Barbara E. Mattick 8/16/2011 DSHPO
Signature of certifying official/Title Date

Florida Department of State, Division of Historical Resources, Bureau of Historic Preservation
State or Federal agency and bureau

In my opinion, the property ☐ meets ☐ does not meet the National Register criteria. (☐ See continuation sheet for additional comments.)

Signature of certifying official/Title Date

State or Federal agency and bureau

4. National Park Service Certification

I hereby certify that the property is:

- ☒ entered in the National Register
☐ See continuation sheet
☐ determined eligible for the National Register
☐ See continuation sheet.
☐ determined not eligible for the National Register
☐ See continuation sheet.
☐ removed from the National Register.
☐ other, (explain) _____

Signature of the Keeper

Date of Action

Edson H. Beall 10.13.11

UNITED STATES DEPARTMENT OF THE INTERIOR
NATIONAL PARK SERVICE

NATIONAL REGISTER OF HISTORIC PLACES
EVALUATION/RETURN SHEET

REQUESTED ACTION: RESUBMISSION

PROPERTY Mann Manor
NAME:

MULTIPLE
NAME:

STATE & COUNTY: FLORIDA, Polk

DATE RECEIVED: 1/04/00
DATE OF 16TH DAY:
DATE OF WEEKLY LIST:

DATE OF PENDING LIST:
DATE OF 45TH DAY: 2/18/00

REFERENCE NUMBER: 11000718

DETAILED EVALUATION:

☒ ACCEPT ☐ RETURN ☐ REJECT 10.13.11 DATE

ABSTRACT/SUMMARY COMMENTS:

Entered in
The National Register
of
Historic Places

RECOM./CRITERIA _____

REVIEWER _____ DISCIPLINE _____

TELEPHONE _____ DATE _____

DOCUMENTATION see attached comments Y/N see attached SLR Y/N



MANO MANOR, BARTOW, POLK CO, FL

#11



WONN MANOR, BARTOW, POLK CO., FL

#2



MANO MANOR, BARTON, POLK CO, #3
FL



MONN MANDOR, BARTOW, POLK CO., FL

#4



MANNA MANOR, BARTOW, POLK CO, FL

#5



MDNN MDNR, BARTOW, POLK CO, FL

#6



MANN MANOR, BARTOW, FLK CA, #7
FL



MANH MANOR, BARTOW, POLK #8
CO, FL



MANOR MANOR, BARTON, POLK #9
CO, FL



MANA MDWOR, BARTOW, POLIC CO, FL

#10



MDWN MANOR, BARTOW, POLK #11A
CO, FL



MANOR MANOR, BARTOW, POLK #12
CA, FL



MAWY MAWY, BARTOW, #13
POLK CO., FL



MANNA MANOR, BARTOW, POLK #141
CO, FL



MANA MANOR, BARTOW POLIC CO, FL

#15



MANH MANOR, BARTOW, POLK CO, FL

#16

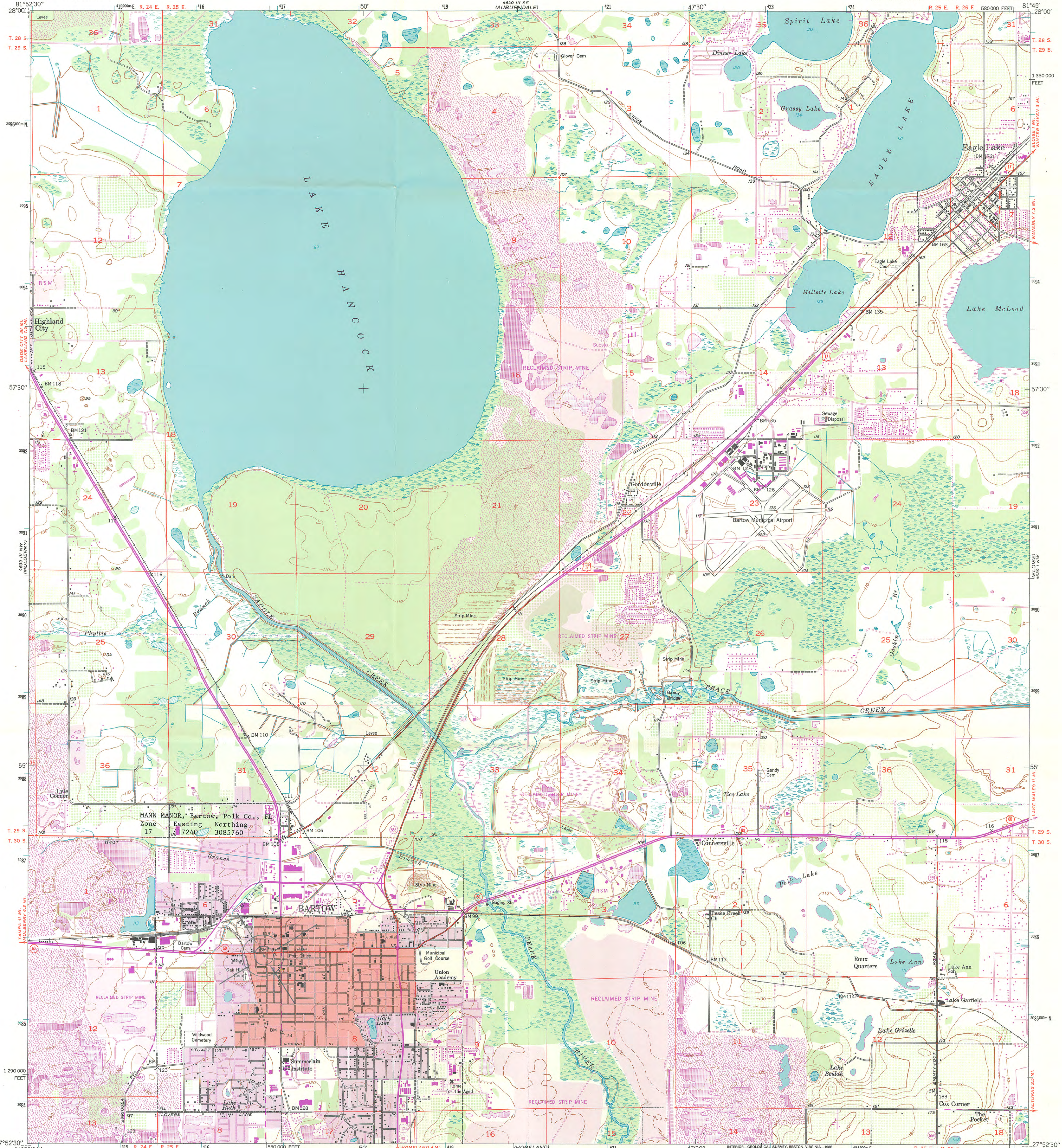


MANNN MANOR, BARTOW, POLK CO, FL

#17

UNITED STATES
DEPARTMENT OF THE INTERIOR
GEOLOGICAL SURVEY

BARTOW QUADRANGLE
FLORIDA-POLK CO.
7.5 MINUTE SERIES (TOPOGRAPHIC)



MANN MANOR, Bartow, Polk Co., FL
Zone 17
Easting 3085760
Northing 7240

BARTOW

Connersville

Roux Quarters

Lake Garfield

Lake Grizelle

Lake Beulah

Cox Corner

The Pocket

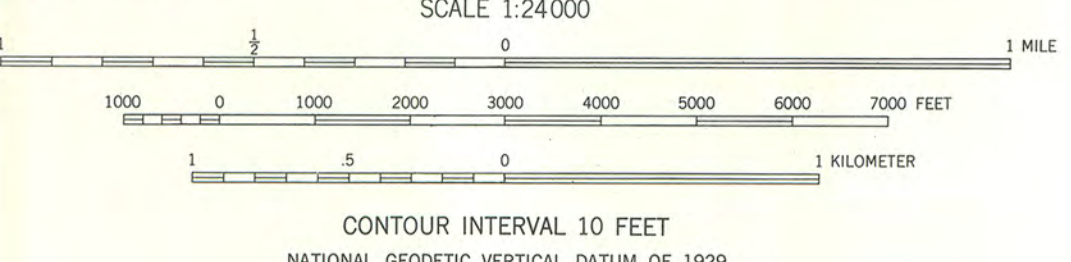
Mapped, edited, and published by the Geological Survey
Control by USGS, USC&GS, and Florida Geodetic Survey

Culture and drainage in part compiled from
aerial photographs taken 1941 and 1947
Topography by plane-table methods 1949

Polyconic projection. 1927 North American datum
10,000-foot grid based on Florida coordinate system,
west zone

1000-meter Universal Transverse Mercator grid ticks,
zone 17, shown in blue
To place on the predicted North American Datum 1983
move the projection lines 29 meters south and
18 meters west as shown by dashed corner ticks

Revisions shown in purple and woodland compiled in cooperation
with State of Florida agencies from aerial photographs taken 1984
and other sources. This information not field checked
Map edited 1987



ROAD CLASSIFICATION
Heavy-duty ——— Light-duty ———
Medium-duty ——— Unimproved dirt ———
U.S. Route State Route

BARTOW, FLA.
27081-H7-TF-024

1949
PHOTOREVISED 1987
DMA 4639 IV NE—SERIES V847

THIS MAP COMPLIES WITH NATIONAL MAP ACCURACY STANDARDS
FOR SALE BY U.S. GEOLOGICAL SURVEY
DENVER, COLORADO 80225 OR RESTON, VIRGINIA 22092
A FOLDER DESCRIBING TOPOGRAPHIC MAPS AND SYMBOLS IS AVAILABLE ON REQUEST



FLORIDA DEPARTMENT OF STATE
Kurt S. Browning
Secretary of State
DIVISION OF HISTORICAL RESOURCES



August 16, 2011

Ms. Carol Shull, Keeper
National Register of Historic Places
Department of Interior
1201 Eye Street, N.W., 8th Floor
Washington, D.C. 20005

Dear Ms. Shull:

Enclosed are the nomination and additional materials for the

Mann Mansion, Bartow, Polk County, Florida

The photographs submitted to us for the nomination were traditional black and white photographs, but were printed on unacceptable paper. Our office scanned those photos and then printed them on Epsom paper. This resulted in black and white, rather than color images on the disk. We hope this is acceptable.

Please do not hesitate to contact me at (850) 245-6364 if you have any questions or require any additional information.

Sincerely,

Barbara E. Mattick, Ph.D.
Deputy State Historic Preservation Officer
for Survey & Registration

Enclosures

500 S. Bronough Street • Tallahassee, FL 32399-0250 • <http://www.flheritage.com>

☐ Director's Office
(850) 245-6300 • FAX: 245-6436

☐ Archaeological Research
(850) 245-6444 • FAX: 245-6436

☐ Historic Preservation
(850) 245-6333 • FAX: 245-6437



FLORIDA DEPARTMENT OF STATE

Kurt S. Browning

Secretary of State

DIVISION OF HISTORICAL RESOURCES

October 11, 2011

Mr. Edson Beall
National Register of Historic Places
Department of Interior
1201 Eye Street, N.W., 8th Floor
Washington, D.C. 20005

Dear Edson:

Enclosed is the first page of the nomination for Mann Manor, this time with my signature. Hopefully, with this in hand you can sign off on the listing. We have an anxious owner. Thank you for your assistance.

Please do not hesitate to contact me at (850) 245-6364 if you have any questions or require any additional information.

Sincerely,

A handwritten signature in cursive script that reads "Barbara E. Mattick".

Barbara E. Mattick, Ph.D.
Deputy State Historic Preservation Officer
for Survey & Registration

Enclosures

500 S. Bronough Street • Tallahassee, FL 32399-0250 • <http://www.flheritage.com>

☐ Director's Office
(850) 245-6300 • FAX: 245-6436

☐ Archaeological Research
(850) 245-6444 • FAX: 245-6436

☐ Historic Preservation
(850) 245-6333 • FAX: 245-6437