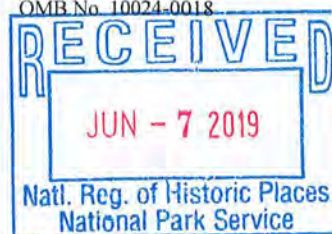


4206



**United States Department of Interior  
National Park Service**

**National Register of Historic Places  
Registration Form**

This form is for use in nominating or requesting determinations for individual properties and districts. See instructions in *How to Complete the National Register of Historic Places Registration Form* (National Register Bulletin 16A). Complete each item by marking "x" in the appropriate box or by entering the information requested. If an item does not apply to the property being documented, enter "N/A" for "not applicable." For functions, architectural classification, materials, and areas of significance, enter only categories and subcategories from the instructions. Place additional entries and narrative items on continuation sheets (NPS Form 10-900A). Use a typewriter, word processor, or computer, to complete all items.

**1. Name of Property**

**historic name** Loeffler, Otto and Ida, House  
**other names/site number**

**2. Location**

<b>street &amp; number</b>	1603 Main Street	N/A	<b>not for publication</b>
<b>city or town</b>	La Crosse	N/A	<b>vicinity</b>
<b>state</b> Wisconsin	<b>code</b> WI	<b>county</b> La Crosse	<b>code</b> 063
			<b>zip code</b> 54601

**3. State/Federal Agency Certification**

As the designated authority under the National Historic Preservation Act, as amended, I hereby certify that this ☒ nomination request for determination of eligibility meets the documentation standards for registering properties in the National Register of Historic Places and meets the procedural and professional requirements set forth in 36 CFR Part 60. In my opinion, the property ☒ meets ☐ does not meet the National Register criteria. I recommend that this property be considered significant ☐ nationally ☐ statewide ☒ locally. (See continuation sheet for additional comments.)

  
Signature of certifying official/Title

6/6/2019  
Date

State Historic Preservation Office - Wisconsin  
State or Federal agency and bureau

In my opinion, the property ☐ meets ☐ does not meet the National Register criteria.  
(See continuation sheet for additional comments.)

Signature of commenting official/Title

Date

State or Federal agency and bureau

Loeffler, Otto and Ida, House

Name of Property

La Crosse

County and State

Wisconsin

#### 4. National Park Service Certification

I hereby certify that the property is:  
☒ entered in the National Register.

☐ See continuation sheet.

☐ determined eligible for the  
National Register.

☐ See continuation sheet.

☐ determined not eligible for the  
National Register.

☐ See continuation sheet.

☐ removed from the National  
Register.

☐ other, (explain:)

Signature of the Keeper

Date of Action

#### 5. Classification

**Ownership of Property**  
(check as many boxes as  
as apply)

☒ private  
☐ public-local  
☐ public-State  
☐ public-Federal

**Category of Property**  
(Check only one box)

☒ building(s)  
☐ district  
☐ structure  
☐ site  
☐ object

**Number of Resources within Property**  
(Do not include previously listed resources  
in the count)

contributing	noncontributing
1	1 buildings
	sites
	structures
	objects
1	1 total

**Name of related multiple property listing:**  
(Enter "N/A" if property not part of a multiple property  
listing.)

N/A

**Number of contributing resources  
is previously listed in the National Register**

0

#### 6. Function or Use

**Historic Functions**

(Enter categories from instructions)

DOMESTIC/Single dwelling

**Current Functions**

(Enter categories from instructions)

DOMESTIC/single dwelling

#### 7. Description

**Architectural Classification**

(Enter categories from instructions)

Late 19<sup>th</sup> and Early 20<sup>th</sup> Century Revivals/Colonial Revival

**Materials**

(Enter categories from instructions)

Foundation STONE

walls BRICK

roof ASPHALT

other

#### Narrative Description

(Describe the historic and current condition of the property on one or more continuation sheets.)

Loeffler, Otto and Ida, House  
Name of Property

La Crosse  
County and State

Wisconsin

## 8. Statement of Significance

### Applicable National Register Criteria

(Mark "x" in one or more boxes for the criteria qualifying the property for the National Register listing.)

- ☐ A Property is associated with events that have made a significant contribution to the broad patterns of our history.
- ☐ B Property is associated with the lives of persons significant in our past.
- ☒ C Property embodies the distinctive characteristics of a type, period, or method of construction or represents the work of a master, or possesses high artistic values, or represents a significant and distinguishable entity whose components lack individual distinction.
- ☐ D Property has yielded, or is likely to yield, information important in prehistory or history.

### Criteria Considerations

(Mark "x" in all the boxes that apply.)

Property is:

- ☐ A owned by a religious institution or used for religious purposes.
- ☐ B removed from its original location.
- ☐ C a birthplace or grave.
- ☐ D a cemetery.
- ☐ E a reconstructed building, object, or structure.
- ☐ F a commemorative property.
- ☐ G less than 50 years of age or achieved significance within the past 50 years.

### Areas of Significance

(Enter categories from instructions)

Architecture

### Period of Significance

1909

### Significant Dates

1909

### Significant Person

(Complete if Criterion B is marked)

N/A

### Cultural Affiliation

N/A

### Architect/Builder

Unknown

### Narrative Statement of Significance

(Explain the significance of the property on one or more continuation sheets.)

Loeffler, Otto and Ida, House	La Crosse	Wisconsin
Name of Property	County and State	

## 9. Major Bibliographic References

(Cite the books, articles, and other sources used in preparing this form on one or more continuation sheets.)

### Previous Documentation on File (National Park Service):

- preliminary determination of individual listing (36 CFR 67) has been requested
- previously listed in the National Register
- previously determined eligible by the National Register
- designated a National Historic landmark
- recorded by Historic American Buildings Survey #
- recorded by Historic American Engineering Record #

### Primary location of additional data:

- ☒ State Historic Preservation Office
- Other State Agency
  - Federal Agency
  - Local government
  - University
  - Other

Name of repository:

## 10. Geographical Data

Acreage of Property less than one acre

UTM References (Place additional UTM references on a continuation sheet.)

1	15	642165.41	4852508.95
	Zone	Easting	Northing

3			
	Zone	Easting	Northing

2			
	Zone	Easting	Northing

4			
	Zone	Easting	Northing

☐ See Continuation Sheet

Verbal Boundary Description (Describe the boundaries of the property on a continuation sheet)

Boundary Justification (Explain why the boundaries were selected on a continuation sheet)

## 11. Form Prepared By

name/title	Elizabeth L. Miller, Historic Preservation Consultant	date	09/15/2018
organization		telephone	608-354-5016
street & number	4033 Tokay Blvd	zip code	53711
city or town	Madison	state	WI

Loeffler, Otto and Ida, House	La Crosse	Wisconsin
Name of Property	County and State	

### Additional Documentation

Submit the following items with the completed form:

#### Continuation Sheets

**Maps** A USGS map (7.5 or 15 minute series) indicating the property's location.  
A sketch map for historic districts and properties having large acreage or numerous resources.

**Photographs** Representative black and white photographs of the property.

**Additional Items** (Check with the SHPO or FPO for any additional items)

### Property Owner

Complete this item at the request of SHPO or FPO.)

<b>name/title</b>	Jeffrey and Lisa Drexler	<b>date</b>	09/15/2018
<b>organization</b>		<b>telephone</b>	919-349-6051
<b>street &amp; number</b>	1603 Main Street	<b>zip code</b>	54601
<b>city or town</b>	La Crosse	<b>state</b>	WI

**Paperwork Reduction Act Statement:** This information is being collected for applications to the National Register of Historic Places to nominate properties for listing or determine eligibility for listing, to list properties, and to amend existing listings. Response to this request is required to obtain a benefit in accordance with the National Historic Preservation Act, as amended (16 U.S.C. 470 et seq.).

**Estimated Burden Statement:** Public reporting burden for this form is estimated to average 18.1 hours per response including time for reviewing instructions, gathering and maintaining data, and completing and reviewing the form. Direct comments regarding this burden estimate or any aspect of this form to the Chief, Administrative Services Division, National Park Service, P.O. Box 37127, Washington, DC 20013-7127; and the Office of Management and Budget, Paperwork Reduction Projects, (1024-0018), Washington, DC 20503.

**United States Department of the Interior**  
National Park Service

**National Register of Historic Places**  
**Continuation Sheet**

Section 7 Page 1

Loeffler, Otto and Ida, House  
La Crosse, La Crosse County, Wisconsin

---

**INTRODUCTION**

The Otto and Ida (Smith) Loeffler House is located at 1603 Main Street in the city of La Crosse, La Crosse County, Wisconsin. Completed in 1909,<sup>1</sup> it is a two-story, frame residence finished with cream brick (photo 1). The house represents the Georgian Revival subtype of the Colonial Revival style. The residence rests on a rock-faced ashlar basement, embellished with a rock-faced stone water table. The wide-eaved, hipped roof flares, and is surfaced with asphalt shingles. A hipped roof garage (photo 2) finished with cream brick is set about ten feet to the north (rear) of the house. The garage accommodates two cars and dates to ca. 1950.<sup>2</sup> It is a non-contributing resource.

**DESCRIPTION**

The Loeffler House stands on the northeast corner of Main and North 16<sup>th</sup> streets, about ten blocks east of La Crosse's central business district, and one block south of the campus of University of Wisconsin- La Crosse (figure 1). The Cass-King Street Historic District (NRHP 1997), the residential neighborhood in La Crosse during the nineteenth and early twentieth centuries where most of the community business and civic leaders lived, is located just south of the Loeffler House. Single-family residences dating from the late-nineteenth to the mid-twentieth centuries are found east, west, and immediately north of the house as well. A sidewalk runs alongside the property on both streets, and an alley runs behind (to the north) of the house. A pair of low, stone piers frame a short flight of stone steps rising to the brick-paved walkway that leads up to the front porch. A wrought iron fence with heavy stone piers encloses the back yard, which has been landscaped with a sunken patio and paved terrace. All these landscape elements were installed ca. 2009,<sup>3</sup> and are not substantial enough to include in the resource count.

**Contributing Resource**

The house appears rectangular in plan, although its footprint is generally ell-shaped, measuring about 60 feet (north-south along North 16<sup>th</sup> Street, the leg of the ell) by 45 feet (east-west, the base of the ell, along Main Street). A broad, denticulated cornice wraps around the house (photo 1). Decorative

---

<sup>1</sup> City of La Crosse Tax Rolls, UW-La Crosse Area Research Center, La Crosse, Wisconsin; *Wright's Directory of La Crosse for 1909*, (Milwaukee: Wright Directory Company, 1909); and *Wright's Directory of La Crosse for 1910*, (Milwaukee: Wright Directory Company, 1910).

<sup>2</sup> The garage does not appear on *Map of La Crosse, Wisconsin*, (Pelham, New York: Sanborn Publishing Company, 1906, pasted over through November 1949), 20.

<sup>3</sup> City of La Crosse online mapping, [https://gis.cityoflacrosse.org/maps/lacrosse\\_gis/](https://gis.cityoflacrosse.org/maps/lacrosse_gis/), (retrieved July 30, 2018), shows the fence and landscaping elements in place in 2011; Google, [https://www.google.com/maps/place/1603+Main+St,+La+Crosse,+WI+54601/@43.8119751,-91.2326345,3a,75y,90h,91.91t/data=!3m7!1e1!3m5!1s5lhmj06DRxkTv17MPc\\_TNQ!2e0!5s20080901T000000!7i13312!8i6656!4m5!3m4!1s0x87f95517eb8d20cd:0x8896fb552c5efec3!8m2!3d43.8119828!4d-91.2323761](https://www.google.com/maps/place/1603+Main+St,+La+Crosse,+WI+54601/@43.8119751,-91.2326345,3a,75y,90h,91.91t/data=!3m7!1e1!3m5!1s5lhmj06DRxkTv17MPc_TNQ!2e0!5s20080901T000000!7i13312!8i6656!4m5!3m4!1s0x87f95517eb8d20cd:0x8896fb552c5efec3!8m2!3d43.8119828!4d-91.2323761), (retrieved August 5, 2018), shows no landscaping elements in September 2008.



**United States Department of the Interior**  
National Park Service

**National Register of Historic Places**  
**Continuation Sheet**

Loeffler, Otto and Ida, House  
La Crosse, La Crosse County, Wisconsin

Section 7 Page 2

---

modillions embellish the eaves of the roof. Most of the windows are 1/1 wood sash, and display stone sills. Almost all the windows are original. The Loeffler House faces south, overlooking Main Street.

The south (front) façade (photo 3) is three bays wide, symmetrical about the central entrance. Sidelights with diamond panes flank the front door. Each sidelight possesses a wooden base decorated with a wreath and swags. A cottage window with diamond-paned header appears on either side of the entrance. At the second story, a boxy bay window with three, diamond-paned casement windows projects slightly from the center of the façade. A 1/1 window is set on either side. A triangular dormer perches on the roof. The dormer is clad with fish scale shingles and displays three, small casement windows and a raking, denticulated cornice. A flat-roofed porch extends across the front façade. It exhibits compound paneled posts with stylized scrolled brackets and clapboarded rails. The porch features a portico with a closed pediment. The pediment is ornamented with a wreath and swags and a raking, denticulated cornice. The porch is embellished with a denticulated cornice and decorative modillions.

The ell-shaped plan is evident on the north (rear) façade. The projecting section (west, photo 4) displays a shallow, one-story, flat-roofed porch, which is likely original. It rests on brick piers, and features a denticulated cornice that matches the one on the main block. The porch was open until at least 1950.<sup>4</sup> It has been enclosed with narrow clapboards, and fitted with metal windows with false muntins that simulate a 3/3 configuration, probably ca. 2009. A plain, modern door appears at the east end of the porch. A single window can be seen west of the porch on the main block. At the second story, the projecting section displays a sleeping porch with wooden pilasters, and clapboarded closed rails, enclosed with pairs of vinyl windows with false muntins giving a 3/1 appearance. The recessed section (east, photo 5) of the main block exhibits a wide, fixed window at the first story, and a 1/1 window at the second story. The first-story window is a replacement dating to ca. 2009; the original, colorful, leaded-glass window has been stored in the attic. A small, one-story, hip roofed, enclosed entry porch finished with narrow clapboards is tucked into the ell, providing direct access to the basement. The entry porch likely dates to ca. 2009, constructed in concert with the landscaping and the remodeling of the basement.

The east façade faces the narrow side yard. The projecting section (north, photo 5, right) displays one window at the first story, and two pairs of windows enclosing the second-story sleeping porch. A small, shed-roofed dormer is set on the roof south of the sleeping porch. The main block (south, photo 6) exhibits a central, exterior brick chimney, flanked with a 1/1 window on either side at each story.

The west façade (photo 7) looks toward North 16<sup>th</sup> street. A two-story, polygonal bay dominates this elevation. It is finished with narrow clapboards and trimmed with slender pilasters. A cottage window

---

<sup>4</sup> *Map of La Crosse, Wisconsin*, 20.

**United States Department of the Interior**  
National Park Service

**National Register of Historic Places**  
**Continuation Sheet**

Loeffler, Otto and Ida, House  
La Crosse, La Crosse County, Wisconsin

Section 7 Page 3

---

with a diamond-paned header lights the west face of the bay at the first story. Above, there is a projecting, denticulated cornice. A diamond-paned header and a wooden panel embellished with wreaths and swags can be seen at the second story on the west face of the bay. The northeast and southeast faces exhibit a narrow, 1/1 window at each floor. On either side of the bay, two 1/1 windows light the first floor, and one 1/1 window appears at the second story. The paired windows enclosing the sleeping porch can be seen at the second story at the north end of the façade. A hipped dormer perches on the roof just south of the polygonal bay. The dormer is finished with fishscale shingles and displays a group of three, small windows.

On the interior, the first floor plan consists of a vestibule that opens into a broad, central hall. The hall leads back to the kitchen (north) and is flanked by a sitting room (southwest), a dining room (west-central), and a large parlor (east). The vestibule is small and features a built-in mirrored cabinet with decorated Doric columns. A paneled, wooden door flanked by sidelights opens from the vestibule into the hall (photo 8). This door matches the front door, with a large pane of glass, and a brass knob with a shaped escutcheon plate. The hall is embellished with a chair rail with compound moldings, and features a straight, wooden staircase with a paneled newel post, simple balustrade, and bottom stair with a projecting rounded lip (photo 9). Closets are tucked beneath the staircase. A broad, cased opening separates the hall from the parlor (east), and the hall from the sitting room (southwest). The parlor (photo 10) features a fireplace with a marbleized black stone mantel and hearth, and a simple, classical, wooden mantelpiece. At the south end of the parlor, a built-in window seat with drawers and flanking bookcases can be seen. A pair of paneled pocket doors separates the dining room from the sitting room (photo 11, sitting room). The dining room (photo 12) is enriched with a beamed ceiling, and paneled wooden wainscot capped with a chair rail. The kitchen was enlarged (by removing the original butler's pantry) and remodeled ca. 2009.<sup>5</sup> A partially-enclosed servants' staircase rises along the east wall of the kitchen. It is wooden, in quarter-turn-with-winders configuration, and displays a paneled newel post, plain balustrade, and a projecting rounded lip on the bottom stair. A wooden, quarter-turn-with-winders staircase descends to the basement beneath the servants' staircase, and has been carpeted. The doors and windows on the first floor display simple, classical surrounds with entablatures and cornices. Except for the kitchen, the first floor spaces are enriched with deep, crown moldings, and exhibit quarter-sawn oak flooring and tall baseboards. Walls and ceilings are finished with plaster; some walls have been papered. There are at least some original light fixtures, including wall sconces in the parlor, a pendant with frosted shades at the north end of the hall, and possibly the chandelier in the dining room.

The second floor plan mirrors the first, with a wide central hall that leads north to the sleeping porch. A simple balustrade with plain, corner newel posts runs around the staircase opening in the hall (photo 13). Two bedrooms are found on either side of the hall. At the south end is a tiny room that could have

---

<sup>5</sup> Lisa Drexler, current owner, personal communication, August 4, 2018.



**United States Department of the Interior**  
National Park Service

**National Register of Historic Places**  
**Continuation Sheet**

Section 7 Page 4

Loeffler, Otto and Ida, House  
La Crosse, La Crosse County, Wisconsin

---

been a nursery. On the northwest end of the hall are two small bathrooms; one is attached to the master bedroom (photo 14, master bedroom), the other is entered from the hallway. It is likely these were created by partitioning the original bathroom, and most recently updated ca. 2009. The master bedroom retains its servant call-button. The baseboards, doors, and surrounds match those on the first floor but have been varnished, rather than painted. A narrower crown molding is found upstairs. Second floor finishes include quarter-sawn oak flooring (except in the bathrooms and the sleeping porch), plaster ceilings and walls, and some wallpaper. At the northeast end of the hall, the servant's staircase descends to the kitchen, and a door opens onto the wooden, quarter-turn-with-risers staircase to the attic. A wooden screen door inside this door allowed for ventilation from the attic during warm weather. The attic has wooden flooring, and an enclosed, low-height storage room, but is otherwise unfinished.

The basement was finished ca. 2009. A laundry room, a recreation room, a den with a wet bar, a bathroom, and storage rooms currently occupy the basement. Finishes include concrete and carpeted flooring, wood paneling, and dropped ceilings.

Non-Contributing Resource

The ca. 1950 garage (photo 2) does not contribute to the significance of the Loeffler House because it was erected after the period of significance (1909). The garage rests on a poured concrete slab, and the hipped roof is covered with asphalt shingles. The two-car garage exhibits a paneled, overhead lift door on the north façade, adjacent to the alley. A paneled wooden door with a glass upper sash opens into the garage at the west end of the south façade. A square window with a soldier course lintel and a stone sill can be seen to the east of the door. A group of three, square windows with a continuous soldier course lintel and a stone sill light the west façade. There are no openings on the east façade.

**ALTERATIONS**

Exterior alterations are limited to the enclosure of the rear porch and the sleeping porch, and the replacement of the leaded-glass fixed window in the parlor. These changes are all on the rear façade, and either not visible (the rear porch and the fixed window) or partially visible (the sleeping porch) from the street, minimizing their impact. In addition, the leaded-glass fixed window has been preserved, and could be re-installed. On the interior, the principal alteration is the remodeling of the kitchen and butler's pantry ca. 2009 to create a more spacious, modern kitchen. The upstairs bathrooms have also be remodeled, as has the basement. These changes are confined to private, functional spaces, and allow the house to continue to serve its residents in the twenty-first century. In contrast, the grander, public spaces, including the vestibule, hall, parlor, sitting room, and dining room are intact, as are the second floor bedrooms and hall. Classical woodwork and other decorative features have been maintained. Overall, the Otto and Ida Loeffler House retains a high degree of integrity to its period of significance, 1909.

**United States Department of the Interior**  
National Park Service

**National Register of Historic Places**  
**Continuation Sheet**

Section 8 Page 1

Loeffler, Otto and Ida, House  
La Crosse, La Crosse County, Wisconsin

---

**STATEMENT OF SIGNIFICANCE**

The Otto and Ida (Smith) Loeffler House is eligible for the National Register of Historic Places (NRHP) under *Criterion C* at the local level. It is an excellent and intact example of the Georgian Revival subtype of Colonial Revival style. The period of significance coincides with the date of construction of the house, 1909.

**BRIEF HISTORY OF THE CITY OF LA CROSSE**

French fur traders traveling the Mississippi River in the late-seventeenth and eighteenth centuries are believed to have been the first Europeans to visit the site that is now the city of La Crosse. The French called the area "Prairie La Crosse" because Native tribes played the game of lacrosse on the plain, which lay on the east bank of the Mississippi, bordered by bluffs and coulees (narrow valleys between high ridges). The first permanent Euro-American settler of La Crosse was Nathan Myrick, who established a trading post on Barron Island (presently Pettibone Park) in 1841. In 1842, Myrick constructed a log cabin at what is currently the intersection of Front and State streets. In 1843, Myrick became the first postmaster, and named the post office "La Crosse." Few Euro-Americans settled in La Crosse until after the U.S. government drove many of the Ho-Chunk (Winnebago) west of the Mississippi River in the late 1840s, in compliance with the 1837 Winnebago Treaty that members of the Ho-Chunk nation had been forced to sign. In 1848, it is estimated that the Euro-American population of La Crosse stood at 20.<sup>6</sup>

In 1851, La Crosse County was organized, the settlement at La Crosse was named county seat, and the first school opened in the community. In 1852, the village of La Crosse was platted, and a wharf where steamboats could dock was built. In 1853, the federal government opened a land sales office in La Crosse, the first sawmill and gristmills were erected on the La Crosse River (at the north end of the current central business district), and the village counted 573 residents. La Crosse grew rapidly during the mid-1850s, developing as a shipping center, and an agricultural support community for the growing number of farm families in the area. La Crosse was chartered as a city with about 3,000 residents in 1856. The city organized a fire department in 1857, following a devastating downtown fire, and required that all buildings erected thereafter along Front and 2<sup>nd</sup> streets between Vine and Jay be of "fire-proof" masonry construction. The Milwaukee Railroad (later a part of the Chicago, Milwaukee and St. Paul Railroad) arrived in 1858, expanding the city's transportation access. In 1860, the population of the city of La Crosse reached 3,860.<sup>7</sup>

---

<sup>6</sup> *History of La Crosse County, Wisconsin*, (Chicago: Western Historical Company, 1881), 475 and 477; Joan M. Rausch and Richard Zeitlin, "Historic La Crosse: Architectural and Historic Record," Report prepared for the City Planning Department of the City of La Crosse, Wisconsin, August 1984, 2.

<sup>7</sup> *History of La Crosse County, Wisconsin*, 477, 479, 501, and 514; and Rausch and Zeitlin, 3 and 5.

**United States Department of the Interior**  
National Park Service

**National Register of Historic Places**  
**Continuation Sheet**

Section 8 Page 2

Loeffler, Otto and Ida, House  
La Crosse, La Crosse County, Wisconsin

La Crosse boomed during the 1860s and 1870s, driven by flour milling and lumbering, and supplemented by brewing and other small industries, steamboat and railroad shipping, and a diversifying commercial sector. The population doubled between 1860 and 1870, rising to 7,785. It had nearly doubled again by 1880, increasing to 14,505 and making La Crosse the second largest city in Wisconsin. Hundreds of buildings were erected during this period. The fire-proof central business district expanded to 3<sup>rd</sup> Street in 1864, and 4<sup>th</sup> Street in 1869, while residential areas radiated easterly from the central business district. A new county courthouse and jail was erected in 1867, and a city hall and fire station built in 1868. In 1870, the city established a police department. A representative sample of businesses in La Crosse that year included 27 groceries, 21 hotels, 8 clothing stores, and 57 saloons. Industrial enterprises included foundries, machine shops, iron works, and several breweries. Lumber milling dominated the economy during the 1870s, as sawmills in La Crosse tripled production from 20 million board feet to 74 million board feet per year, and the city became one of the two or three most important lumbering centers on the Mississippi River. The Milwaukee Railroad erected a bridge across the Mississippi in 1876, and built a round house and railroad repair shops in La Crosse. The same year, two other railroads extended lines to La Crosse: the Chicago and NorthWestern Railway and the Green Bay & Minnesota Railroad (later the Green Bay & Western). The first high school was built in 1878. Local investors also founded the La Crosse Street Railway Company in 1879, which would expand into the neighborhoods, making the commute to downtown accessible. Herman Loeffler, Otto's brother, settled in La Crosse in 1879, and went to work as a cutter (tailor) at the C.F. Klein Dry Goods and Clothing Store at 300 Pearl Street (extant).<sup>8</sup>

In 1880, ten lumber mills were in operation in La Crosse. The lumber industry thrived into the 1890s, attracting lumber-support manufacturing such as harnesses, bolts, clothing, and packed meats. Although flour milling declined, brewing increased. By 1884, La Crosse's beer manufacturers produced as much as Milwaukee's breweries. The retail sector also expanded, and the city added water mains, paved some streets, and installed sidewalks in the central business district. In 1884, Herman Loeffler opened his own clothing and tailor shop at 126 South 3<sup>rd</sup> Street; Otto would move to La Crosse and join him in business in 1885. The arrival of the Chicago, Burlington and Northern Railroad (later the Chicago, Burlington and Quincy) in 1888, and the construction of its extensive yards and large roundhouse, made La Crosse the largest rail center between Milwaukee and St. Paul. The Chicago, Burlington and Northern ran north-south along the Mississippi River, successfully competing with steamboats and soon driving them out of business.<sup>9</sup>

---

<sup>8</sup> *History of La Crosse County, Wisconsin*, 501 and 504; Rausch and Zeitlin, 5-7; and *Morrissey & Bunn's La Crosse City Directory: 1880-81*, (La Crosse, Wisconsin: Morrissey & Bunn, Publishers, 1880).

<sup>9</sup> *History of La Crosse County, Wisconsin*, 477; Rausch and Zeitlin, 7-8; *Bunn & Philippi's La Crosse City Directory*, (Winona, MN: Jones & Kroeger, Printers, 1884); and *Urban Publishing Company's La Crosse City Directory, 1885-86* (La Crosse: A.M. Lamborn, Job Printer, 1885).

**United States Department of the Interior**  
National Park Service

**National Register of Historic Places**  
**Continuation Sheet**

Section 8 Page 3

Loeffler, Otto and Ida, House  
La Crosse, La Crosse County, Wisconsin

In 1890, La Crosse numbered 25,090 inhabitants, but the city's phenomenal growth would slow in the following decade. The lumber industry began to decline in the late 1890s; the last lumber mill in La Crosse closed in 1906. In 1893, Otto Loeffler sold his interest in the clothing and tailoring business he had engaged in with his brother, and formed a new company with John Elliott. The Elliott-Loeffler Company imported and sold wines and liquors at 222 Pearl Street. The business prospered, and Otto and Ida Loeffler were able to build the house at 1603 Main Street in 1909. La Crosse remained an important retail, manufacturing, and transportation center from the 1890s through the 1910s. Residential neighborhoods continued to expand eastward, and La Crosse's municipal government embarked on a series of civic improvements. Forty blocks in the central business district were paved with brick during the first decade of the twentieth century. The City Council created the Board of Park Commissioners, which contracted with nationally-prominent urban planner John Nolen to make recommendations for a park system for La Crosse; many of his suggestions would eventually be carried out. A new high school was erected in 1907. Main Hall was built in 1908 for the La Crosse Normal School, a state teacher-training institution that is now the University of Wisconsin-La Crosse.<sup>10</sup>

Between 1910 and 1930, La Crosse's population rose to 39,614. The city's economy prospered, despite the toll that Prohibition, in effect from 1920 to 1933, took on La Crosse's sizeable brewing industry. Manufacturers and sellers of beer, wine, and liquor converted their enterprises to non-alcoholic beverages; a number went out of business. By 1920, John Elliott had retired, and Otto Loeffler was selling tobacco, billiard tables, and non-intoxicating beverages. The business closed after his death in 1922. Other retail and industrial concerns thrived during the period. La Crosse Rubber Mills, makers of rubber boots, was a leading employer, with between 1,200 and 1,500 workers. The National Gauge and Equipment Company, producers of automobile gauges; Trane, makers of plumbing and heating equipment; and the La Crosse Plow Works (acquired by the Milwaukee-based Allis Chalmers Company) were other important manufacturers of the time. Construction boomed during the 1920s; more than 100 buildings were constructed annually.<sup>11</sup>

The Depression of the 1930s derailed the economy nationwide, and La Crosse did not recover until after World War II. La Crosse grew rapidly in the first few years following the end of the war, reaching a population of 47,535 in 1950. The economy has diversified in the post-war era, and the number of residents has remained fairly steady since 1970, at slightly more than 50,000. La Crosse has become a regional medical, technology, and education center. Gunderson Health System and the Mayo Health Clinic are the largest employers, followed by Trane (now manufacturers of HVAC systems), and Kwik Trip (regional gasoline and convenience stores). The City Brewing Company (formerly

<sup>10</sup> Robert C. Nesbit, *Wisconsin: A History*, (Madison, Wisconsin: The University of Wisconsin Press, 1973), 549; Rausch and Zeitlin, 8-10.

<sup>11</sup> Rausch and Zeitlin, 9-10; and *Wright's Directory of La Crosse for 1922*, (Milwaukee: Wright Directory Company, 1922).

**United States Department of the Interior**  
National Park Service

**National Register of Historic Places**  
**Continuation Sheet**

Section 8 Page 4

Loeffler, Otto and Ida, House  
La Crosse, La Crosse County, Wisconsin

Heileman Brewery), municipal and county government, and the University of Wisconsin-La Crosse also employ many. The University of Wisconsin-La Crosse enrolls more than 10,000 students annually. Two other regional secondary institutions are located in La Crosse: Viterbo University (a Catholic college with about 2,600 students, and an online presence), and Western Technical College (part of the state's system of vocational, technical, and adult education). Recreation is also a significant sector of the economy, due to the presence of Mississippi River and the beauty of the driftless area with its towering bluffs, and narrow coulees. In 2010, the population of the city of La Crosse was 51,320.<sup>12</sup>

**SIGNIFICANCE: ARCHITECTURE**

The Loeffler House is an excellent example of the Georgian Revival subtype of the Colonial Revival style, reflecting the creative, pre-World War I interpretation of Federal and Georgian residences of the colonial era. The Georgian Revival was infrequently built in Wisconsin, but its era of construction coincides with that of the Colonial Revival, built between about 1895 and 1940.<sup>13</sup>

The Georgian Revival style was a current in the Colonial Revival movement, rising out of an interest in the American colonial period that followed the Philadelphia Centennial of 1876. In 1877, Charles F. McKim and his future partners, William R. Mead, and Stanford White, indulged their mutual curiosity about colonial buildings by taking a walking tour through communities along the Atlantic seaboard north of Boston. The Georgian and Federal architecture of the English colonies had been inspired by the Italian-derived Renaissance classicism of distinguished British architects such as Christopher Wren and Inigo Jones, and disseminated to America through pattern books. McKim, Mead and White produced two designs that inaugurated the Colonial Revival style: the Appleton House in 1883-84 (Lennox, Massachusetts); and the Taylor House in 1885-86 (Newport, Rhode Island).<sup>14</sup> The Colonial Revival style took hold gradually and evolved over time, but would remain popular through much of the twentieth century.

Prior to World War I, Colonial Revival designs generally represented liberal interpretations of Georgian and Federal precedents. During the pre-World War I period, elements drawn from the Craftsman and Prairie styles were often incorporated into the design, most notably grouped windows,

---

<sup>12</sup> Rausch and Zeitlin, 10; Nesbit, 549; "Largest Employers (La Crosse County)," *La Crosse Tribune*, September 1, 2013, [https://lacrossetribune.com/largest-employers-la-crosse-county/article\\_d312f82c-12bc-11e3-90bf-001a4bcf887a.html](https://lacrossetribune.com/largest-employers-la-crosse-county/article_d312f82c-12bc-11e3-90bf-001a4bcf887a.html), (retrieved August 3, 2018); and U.S., Department of Commerce, Bureau of the Census, "American Fact Finder," [https://factfinder.census.gov/faces/nav/jsf/pages/community\\_facts.xhtml](https://factfinder.census.gov/faces/nav/jsf/pages/community_facts.xhtml), (retrieved August 3, 2018).

<sup>13</sup> Barbara L. Wyatt, ed., *Cultural Resource Management in Wisconsin*, (Madison: State Historical Society of Wisconsin, 1986), II:2-17 and 2-28.

<sup>14</sup> Marcus Whiffen and Frederick Koeper, *American Architecture, Volume 2: 1860-1976*, (Cambridge, Massachusetts: MIT Press, 1981), 269; and Virginia Savage McAlester, *A Field Guide to American Houses*, (New York: Alfred A. Knopf, 2013), 432.

**United States Department of the Interior**  
National Park Service

**National Register of Historic Places**  
**Continuation Sheet**

Section 8 Page 5

Loeffler, Otto and Ida, House  
La Crosse, La Crosse County, Wisconsin

front porches, broad eaves and exposed rafters. In contrast, Colonial Revival architecture of the post-World War I period typically displayed proportions and details that more accurately reflected historical precedents, as a result of the publication of a number of carefully researched books that provided photographs and measured drawings of colonial buildings. The Georgian Revival residence of both periods is characterized by a rectangular plan, and a formal, symmetrical façade embellished with details such as classical columns, front entrance with flanking sidelights, denticulated cornices, dormers, fanlights and Palladian windows. The front entrance is typically accented with a prominent classical surround or a one-story portico.<sup>15</sup>

The Loeffler House, erected in 1909, exemplifies the free-form Georgian Revival of the pre-World War I period. It displays distinguishing characteristics of the style: the rectangular plan; the formal, symmetrical façade; dormers; and classical details such as the front entrance with flanking sidelights, denticulated cornices, and the pedimented portico that projects from the front porch. The two-story polygonal bay and the cottage windows are Queen Anne components, although the diamond-paned headers (and sidelights) recall the medieval-European-influenced windows of the colonial period in the U.S. The Loeffler House also possesses wide eaves with exposed rafters, and a full-façade front porch, features drawn from the contemporaneous Craftsman and Prairie School, further testifying to the house's pre-World War I construction date. The form of the Loeffler House places it in the category that noted architectural historian Virginia Savage McAlester calls "hipped roof with full-width porch." She notes that this is the most numerous configuration for Colonial Revival residences erected prior to 1915, accounting for close to one-third of the examples of the style nationwide. McAlester adds that the house is typically two stories, and usually has hipped or gabled dormers. On the interior, the Loeffler House embodies the Georgian Revival with its central hall plan, and the simple, classical surrounds, baseboards, moldings, staircase elements, and fireplace mantelpiece.<sup>16</sup> The house retains a high degree of integrity.

The Architecture/History Inventory (AHI) of the Wisconsin Office of Historic Buildings (SHPO) has identified 18 residences of the Georgian Revival in the city of La Crosse, including the Loeffler House. A review of these houses suggests that four fit better under other classifications. Twelve of the remaining 14 residences were erected prior to 1915, and each of these incorporates elements of either Queen Anne or Craftsman/Prairie School style, or both. Of these 12, only two, including the Loeffler House, are finished with brick. The other brick example is the James Taylor House (1902), at 210 South 14<sup>th</sup> Street, a two-story brick-veneered residence with a tall, hipped roof. It is a modest representative of the style, with a Doric-columned front porch, front door with sidelights, and a gabled dormer. As such, it is not comparable to the Loeffler House. Three residences that provide better

<sup>15</sup> Wyatt, II: 2-28; McAlester, 406-432; and John J.-G. Blumenson, *Identifying American Architecture: A Pictorial Guide to Styles and Terms, 1600-1945*, (Walnut Creek, California: AltaMira Press, 1995, revised edition), 18-19.

<sup>16</sup> McAlester, 409, and 416-17.

**United States Department of the Interior**  
National Park Service

**National Register of Historic Places**  
**Continuation Sheet**

Section 8 Page 6

Loeffler, Otto and Ida, House  
La Crosse, La Crosse County, Wisconsin

comparisons are the S.Y. Hyde House (1897) at 1224 King Street, the Frank and Thekla Funke House (1904) at 137 South 13<sup>th</sup> Street, and the Max and Louise (Hyde) Platz House (1903) at 314 South 15<sup>th</sup> Street. All are located nearby in the NRHP-listed Cass & King Historic District, and represent excellent and intact examples of pre-World War I Georgian Revival. The Hyde House was designed by the La Crosse architectural firm of (Gustav) Stoltze and (Hugo) Schick, and constructed in 1897 for Hyde's son-in-law and daughter, Max and Louise (Hyde) Platz. The Hyde House exemplifies the free-form interpretation of Georgian Revival, incorporating Queen Anne elements. It is a two-story residence, clad with narrow clapboards and capped with a flaring, hipped roof. The entrance with sidelights, two-story corner pilasters, boxy central bay at the second-story, gambrel dormer, and curvilinear porch with slender fluted Doric columns create an eclectic, Georgian-inspired appearance. The Funke House is a two-story, hip-roofed house finished with narrow clapboards and trimmed with two-story, corner fluted pilasters. A hipped-roof porch extends across the front façade and displays fluted Doric columns. The porch and the main block are enriched with deep, denticulated cornices. A boxy bay with small, round-arched leaded-glass windows is centered at the second story. Above, a gabled dormer with returned eaves and a Palladian window perches on the roof. The Platz House was designed by La Crosse architects (Hugo) Schick and (Andrew) Roth, successor firm to Stoltze and Schick. Interestingly, it was built for the same couple as the Platz House, Max and Louise (Hyde) Platz. It is a two-story, clapboarded house with a flaring, broad-eaved hipped roof. The full-façade porch features Corinthian columns, and a central rounded portico. A denticulated cornice enlivens the porch and the main block of the house. A two-story, rounded bay appears on the side elevation. Aside from the finish and the shape of the portico and two-story bay, the Platz House is quite similar to the Loeffler House. Although the architect of the Loeffler House has not been identified, the similarity to the Platz House suggests that it could have been designed by the same firm. In comparison with the Hyde, Funke, and Platz houses, the Loeffler House is as good an example of pre-1915 Georgian Revival design, and its integrity is just as good. Therefore, the Loeffler House merits inclusion on the NRHP.

Otto and Ida (Smith) Loeffler and the History of the Loeffler House

Otto Loeffler (1853-1922) was born in Pomerania, a region on the south shore of the Baltic Sea that is presently divided between Germany and Poland. Loeffler immigrated to Wisconsin with his parents, Johann and Mathilde, in 1868. The Loefflers initially settled in the Town of Lebanon, a farming region in southeastern Dodge County. In 1870, Otto worked as a servant in the household of Ferdinand Volkmann in neighboring Emmet Township. By that time, the Loeffler family had relocated to the village of Watertown, Dodge County, and Otto soon followed.<sup>17</sup>

---

<sup>17</sup> Otto Loeffler, obituary, *La Crosse Tribune*, October 15, 1922, 6; and U.S., Department of Commerce, Bureau of the Census, *Ninth Census of the United States, 1870*, <http://www.ancestry.com>, (retrieved July 12, 2018).



**United States Department of the Interior**  
National Park Service

**National Register of Historic Places**  
**Continuation Sheet**

Section 8 Page 7

Loeffler, Otto and Ida, House  
La Crosse, La Crosse County, Wisconsin

In 1880, Otto married Emilie Richter (1853-1882). That year, Otto worked as a store clerk. Following Emilie's death, Otto married Dora (1862-1899). Their son, Arthur, was born in 1883. In 1885, Otto, Dora, and Arthur Loeffler moved to La Crosse. Otto's brother, Herman Loeffler, had settled in La Crosse in 1879 and worked as a tailor. Herman and Otto opened a men's clothing and tailoring business, and worked together until 1893, when Otto sold his interest in the firm.<sup>18</sup>

Loeffler and John A. Elliott (1862-1923) incorporated the Elliott-Loeffler Company in 1893. The business imported wines and liquors, selling them at 222 Pearl Street in downtown La Crosse. Loeffler would act as president of the firm throughout its existence, while Elliott would be secretary-treasurer until retiring in 1919. In 1900, Loeffler established another business, the La Crosse Steam Laundry Company, which he would direct until his death. He was also elected alderman of the 18<sup>th</sup> ward in 1900, and would sit on the La Crosse Board of Education from 1906 until 1910. In 1905, Arthur Loeffler (1883-1961) joined the Elliott-Loeffler Company as bookkeeper, a role he would continue through 1919, when he would succeed Elliott as secretary-treasurer. Otto Loeffler became a partner in the Tisch Brothers cigar and cigar box manufacturing business in 1907, and the Elliott-Loeffler Company would sell cigars as well as alcoholic beverages until Prohibition in 1920. The business prospered, reporting that it was grossing as much as \$300,000 a year in 1910. After Elliott retired, the business became the Loeffler Company, selling cigars and tobacco, billiard tables and supplies, and, in compliance with Prohibition, non-intoxicating beverages. The Loeffler Company dissolved following Otto Loeffler's death.<sup>19</sup>

Otto Loeffler had married again in 1902. His third wife was Ida Smith (1872-1950). She was born in La Crosse County, the daughter of German immigrants. In 1900, Ida was working at a seed company, filling orders. For the first few years of their marriage, the couple continued to reside at 1016 South 8<sup>th</sup> Street, where Otto Loeffler had lived for many years. In 1909, Otto Loeffler bought lot 7, block 23, in Metzger & Funk's addition to La Crosse, and had the house at 1603 Main Street erected. Arthur Loeffler had the house at 1610 Main Street built about the same time.<sup>20</sup>

---

<sup>18</sup> Loeffler; Wisconsin Historical Society, *Wisconsin Vital Record Index, pre-1907* [database on-line], (Provo, Utah: Ancestry.com, 2000), <http://www.ancestry.com>, (retrieved July 12, 2018); U.S., Department of Commerce, Bureau of the Census, *Tenth Census of the United States, 1880*, <http://www.ancestry.com>, (retrieved July 12, 2018); and *Urban Publishing Company's La Crosse City Directory, 1885-86*.

<sup>19</sup> Loeffler; "Liquor House a Big Institution," *La Crosse Tribune*, July 29, 1910, 1:3; *Philippi's La Crosse City Directory*, (La Crosse: L.P. Philippi Company, 1893; 1897; 1900; and 1905); *Wright's Directory of La Crosse for 1907*, (Milwaukee: H.C. Wright, 1907); *Wright's Directory of La Crosse for 1909*; *Wright's Directory of La Crosse for 1910*; *Wright's Directory of La Crosse for 1915*, (Milwaukee: Wright Directory Company, 1915); *Wright's Directory of La Crosse for 1919*, (Milwaukee: Wright Directory Company, 1919); *Wright's Directory of La Crosse for 1922*; and *Wright's Directory of La Crosse for 1924*, (Milwaukee: Wright Directory Company, 1924).

<sup>20</sup> U.S., Department of Commerce, Bureau of the Census, *Ninth Census of the United States, 1870*; U.S., Department of Commerce, Bureau of the Census, *Tenth Census of the United States, 1880*; U.S., Department of Commerce, Bureau of the

**United States Department of the Interior**  
National Park Service

**National Register of Historic Places**  
**Continuation Sheet**

Section 8 Page 8

Loeffler, Otto and Ida, House  
La Crosse, La Crosse County, Wisconsin

---

Otto and Ida Loeffler lived at 1603 Main Street until he passed away. Ida inherited the property. Around 1925, Ida married John Krumme (1872-1931). Krumme was a traveling salesman, and had retired by 1930. Ida Krumme continued to live in the house after her second husband died, until shortly before her own death in 1950. Quincy and Helen Hale then purchased the house.<sup>21</sup>

Quincy Hale (1893-1987) was an attorney, born in Minnesota, and living in La Crosse by 1930. Helen Wilson (1893-1976) married Quincy Hale in Montana in 1923. The Loeffler House remained in the Hale family until 1987, when Donald and Donna Jobe acquired it. They sold to Brian and Ingrid Watkins in 2004. Steven and Stephanie Whitford-Hawkins purchased the property in 2006. The present owners, Lisa and Jeff Drexler, bought the Loeffler House in 2015.<sup>22</sup>

**CONCLUSION**

The Loeffler House is eligible under *Criterion C* at the local level. It is an excellent and intact example of the Georgian Revival subtype of Colonial Revival style, reflecting the creative, pre-World War I interpretation of Federal and Georgian residences of the colonial era. The period of significance coincides with the date of construction of the house, 1909. The Loeffler House retains a high degree of integrity.

---

Census, *Twelfth Census of the United States, 1900*, <http://www.ancestry.com>, (retrieved July 12, 2018); Wisconsin Historical Society, *Wisconsin Vital Record Index, pre-1907* [database on-line]; City of La Crosse Tax Rolls; *Wright's Directory of La Crosse for 1909*; and *Wright's Directory of La Crosse for 1910*.

<sup>21</sup> *Wright's Directory of La Crosse for 1926*, (Milwaukee: Wright Directory Company, 1926); *Wright's Directory of La Crosse for 1928*, (Milwaukee: Wright Directory Company, 1928); *Wright's Directory of La Crosse for 1950*, (Milwaukee: Wright Directory Company, 1950); *Wright's Directory of La Crosse for 1955*, (Milwaukee: Wright Directory Company, 1955); *Wright's Directory of La Crosse for 1959*, (Milwaukee: Wright Directory Company, 1959); and U.S., Department of Commerce, Bureau of the Census, *Fifteenth Census of the United States, 1930*, <http://www.ancestry.com>, (retrieved July 31, 2018).

<sup>22</sup> U.S., Department of Commerce, Bureau of the Census, *Fifteenth Census of the United States, 1930; Montana, County Marriage Records, 1865-1993* [database on-line], (Lehi, Utah: Ancestry.com, 2016), <http://www.ancestry.com>, (retrieved July 31, 2018); La Crosse County Deeds, 805:994, October 26, 1987; La Crosse County Deeds, #1452606, June 26, 2006; and La Crosse County Deeds, #1661513, August 12, 2015.

**United States Department of the Interior**  
National Park Service

**National Register of Historic Places**  
**Continuation Sheet**

Section 9 Page 1

Loeffler, Otto and Ida, House  
La Crosse, La Crosse County, Wisconsin

---

**BIBLIOGRAPHY**

Blumenson, John J.-G. *Identifying American Architecture: A Pictorial Guide to Styles and Terms, 1600-1945*. Walnut Creek, California: AltaMira Press, 1995.

*Bunn & Philippi's La Crosse City Directory*. Winona, MN: Jones & Kroeger, Printers, 1884.

Butterfield, C. W. *The History of Crawford and Richland Counties, Wisconsin*. Two vols. Springfield, IL: Union Publishing Company, 1884.

Drexler, Lisa. Current owner. Personal communication, August 4, 2018.

Google Maps. 1603 Main Street, La Crosse, Wisconsin,  
[https://www.google.com/maps/place/1603+Main+St,+La+Crosse,+WI+54601/@43.8119751,-91.2326345,3a,75y,90h,91.91t/data=!3m7!1e1!3m5!1s5lhmj06DRxkTvl7MPc\\_TNQ!2e0!5s20080901T000000!7i13312!8i6656!4m5!3m4!1s0x87f95517eb8d20cd:0x8896fb552c5efec3!8m2!3d43.8119828!4d-91.2323761](https://www.google.com/maps/place/1603+Main+St,+La+Crosse,+WI+54601/@43.8119751,-91.2326345,3a,75y,90h,91.91t/data=!3m7!1e1!3m5!1s5lhmj06DRxkTvl7MPc_TNQ!2e0!5s20080901T000000!7i13312!8i6656!4m5!3m4!1s0x87f95517eb8d20cd:0x8896fb552c5efec3!8m2!3d43.8119828!4d-91.2323761)), (retrieved August 5, 2018).

La Crosse County Deeds.

La Crosse, Wisconsin. Online mapping, [https://gis.cityoflacrosse.org/maps/lacrosse\\_gis/](https://gis.cityoflacrosse.org/maps/lacrosse_gis/), (retrieved July 30, 2018).

La Crosse, Wisconsin. UW-La Crosse Area Research Center. City of La Crosse Tax Rolls.

“Largest Employers (La Crosse County).” *La Crosse Tribune*, September 1, 2013,  
[https://lacrossetribune.com/largest-employers-la-crosse-county/article\\_d312f82c-12bc-11e3-90bf-001a4bcf887a.html](https://lacrossetribune.com/largest-employers-la-crosse-county/article_d312f82c-12bc-11e3-90bf-001a4bcf887a.html), (retrieved August 3, 2018).

“Liquor House a Big Institution.” *La Crosse Tribune*, July 29, 1910, 1:3.

Otto Loeffler, obituary. *La Crosse Tribune*, October 15, 1922, 6.

McAlester, Virginia Savage. *A Field Guide to American Houses*. New York: Alfred A. Knopf, 2013.

Madison, Wisconsin. Wisconsin Historical Society. Wisconsin Architecture and History Inventory,  
<http://www.wisahrd.org/index>, (retrieved July 12, 2018).

**United States Department of the Interior**  
National Park Service

**National Register of Historic Places**  
**Continuation Sheet**

Section 9 Page 2

Loeffler, Otto and Ida, House  
La Crosse, La Crosse County, Wisconsin

---

*Map of La Crosse, Wisconsin.* Pelham, New York: Sanborn Publishing Company, 1906, pasted over through November 1949.

*Montana, County Marriage Records, 1865-1993* [database on-line]. Lehi, Utah: Ancestry.com, 2016, <http://www.ancestry.com>, (retrieved July 31, 2018).

*Morrissey & Bunn's La Crosse City Directory: 1880-81.* La Crosse, Wisconsin: Morrissey & Bunn, Publishers, 1880.

Nesbit, Robert C. *Wisconsin: A History.* Madison, WI: The University of Wisconsin Press, 1973.

*Philippi's La Crosse City Directory.* La Crosse: L.P. Philippi Company, 1893; 1897; 1900; and 1905.

Rausch, Joan M. and Richard Zeitlin. "Historic La Crosse: Architectural and Historic Record." Report prepared for the City Planning Department of the City of La Crosse, Wisconsin, August 1984.

*Urban Publishing Company's La Crosse City Directory, 1885-86.* La Crosse: A.M. Lamborn, Job Printer, 1885.

U.S., Department of Commerce, Bureau of the Census. "American Fact Finder." [https://factfinder.census.gov/faces/nav/jsf/pages/community\\_facts.xhtml](https://factfinder.census.gov/faces/nav/jsf/pages/community_facts.xhtml), (retrieved August 3, 2018).

U.S. Department of Commerce. Bureau of the Census. *Ninth Census of the United States, 1870.* <http://www.ancestry.com>, (retrieved July 12, 2018).

U.S. Department of Commerce. Bureau of the Census. *Tenth Census of the United States, 1880.* <http://www.ancestry.com>, (retrieved July 12, 2018).

U.S. Department of Commerce. Bureau of the Census. *Twelfth Census of the United States, 1900.* <http://www.ancestry.com>, (retrieved July 12, 2018).

U.S. Department of Commerce, Bureau of the Census, *Fifteenth Census of the United States, 1930.* <http://www.ancestry.com>, (retrieved July 31, 2018).

Whiffen, Marcus and Frederick Koeper. *American Architecture, Volume 2: 1860-1976.* Cambridge, Massachusetts: MIT Press, 1981.

**United States Department of the Interior**  
National Park Service

**National Register of Historic Places**  
**Continuation Sheet**

Section 9 Page 3

Loeffler, Otto and Ida, House  
La Crosse, La Crosse County, Wisconsin

---

Wisconsin Historical Society. *Wisconsin Vital Record Index, pre-1907* [database on-line]. Provo, Utah: Ancestry.com, 2000, <http://www.ancestry.com>, (retrieved July 12, 2018).

*Wright's Directory of La Crosse for 1907*. Milwaukee: H.C. Wright, 1907.

*Wright's Directory of La Crosse for 1909*. Milwaukee: Wright Directory, Company, 1909.

*Wright's Directory of La Crosse for 1910*. Milwaukee: Wright Directory Company, 1910.

*Wright's Directory of La Crosse for 1915*. Milwaukee: Wright Directory Company, 1915.

*Wright's Directory of La Crosse for 1919*. Milwaukee: Wright Directory Company, 1919.

*Wright's Directory of La Crosse for 1922*. Milwaukee: Wright Directory Company, 1922.

*Wright's Directory of La Crosse for 1924*. Milwaukee: Wright Directory Company, 1924.

*Wright's Directory of La Crosse for 1926*. Milwaukee: Wright Directory Company, 1926.

*Wright's Directory of La Crosse for 1928*. Milwaukee: Wright Directory Company, 1928.

*Wright's Directory of La Crosse for 1950*. Milwaukee: Wright Directory Company, 1950.

*Wright's Directory of La Crosse for 1955*. Milwaukee: Wright Directory Company, 1955.

*Wright's Directory of La Crosse for 1959*. Milwaukee: Wright Directory Company, 1959.

Wyatt, Barbara L., ed. *Cultural Resource Management in Wisconsin*. 3 vols. Madison, WI: State Historical Society of Wisconsin, 1986.

**United States Department of the Interior**  
National Park Service

**National Register of Historic Places**  
**Continuation Sheet**

Section 10 Page 1

Loeffler, Otto and Ida, House  
La Crosse, La Crosse County, Wisconsin

---

**VERBAL BOUNDARY DESCRIPTION**

The Loeffler House is located in the city of La Crosse, La Crosse County, Wisconsin, on Lot 7, Block 23, Metzger & Funk's Addition to La Crosse. The legal and historic boundary follows the back line of the sidewalk along Main Street a distance of 60 feet, and the back line of the sidewalk along North 16th Street a distance of 150 feet. The boundary encloses a rectangular parcel of less than one acre.

**BOUNDARY JUSTIFICATION**

The boundary of the Loeffler House encloses all those resources historically associated with the property. It coincides with the legal boundary.

**United States Department of the Interior**  
National Park Service

**National Register of Historic Places**  
**Continuation Sheet**

Section photos Page 1

Loeffler, Otto and Ida, House  
La Crosse, La Crosse County, Wisconsin

---

Name of Property: Loeffler, Otto and Ida, House  
City: La Crosse  
County: La Crosse County  
State: Wisconsin  
Name of Photographer: Elizabeth L. Miller  
Date of Photos: August 2018  
Location of Original Data Files: Wisconsin Historical Society, Madison, WI

WI\_LaCrosseCounty\_Loeffler,OttoandIda,House\_0001  
South (front) façades, camera facing northerly

WI\_LaCrosseCounty\_Loeffler,OttoandIda,House\_0002  
Garage, north (front) façade, camera facing southeast

WI\_LaCrosseCounty\_Loeffler,OttoandIda,House\_0003  
South (front) and façade, camera facing north

WI\_LaCrosseCounty\_Loeffler,OttoandIda,House\_0004  
North (rear) façade, west section, camera facing southeast

WI\_LaCrosseCounty\_Loeffler,OttoandIda,House\_0005  
North (rear) façade, east section, camera facing south

WI\_LaCrosseCounty\_Loeffler,OttoandIda,House\_0006  
East façade, camera facing north-northwest

WI\_LaCrosseCounty\_Loeffler,OttoandIda,House\_0007  
West façade, camera facing east-southeast

WI\_LaCrosseCounty\_Loeffler,OttoandIda,House\_0008  
First floor hall looking toward vestibule and front entrance, camera facing south

WI\_LaCrosseCounty\_Loeffler,OttoandIda,House\_0009  
Principal staircase, first floor, camera facing northeast

WI\_LaCrosseCounty\_Loeffler,OttoandIda,House\_0010  
Parlor, camera facing north-northeast

WI\_LaCrosseCounty\_Loeffler,OttoandIda,House\_0011  
Sitting room, camera facing south

WI\_LaCrosseCounty\_Loeffler,OttoandIda,House\_0012  
Dining room, camera facing north-northwest



**United States Department of the Interior**  
National Park Service

**National Register of Historic Places**  
**Continuation Sheet**

Section photos Page 2

Loeffler, Otto and Ida, House  
La Crosse, La Crosse County, Wisconsin

---

WI\_ LaCrosseCounty\_ Loeffler,OttoandIda,House \_0013  
Second floor hall, camera facing north

WI\_ LaCrosseCounty\_ Loeffler,OttoandIda,House \_0014  
Master bedroom, camera facing west

**United States Department of the Interior**  
National Park Service

**National Register of Historic Places**  
**Continuation Sheet**

Section **figures** Page 1

Loeffler, Otto and Ida, House  
La Crosse, La Crosse County, Wisconsin

---

Insert Figures  
**LIST OF FIGURES**

- Figure 1. Loeffler House, La Crosse, Wisconsin, USGS with UTM Reference  
Figure 2. Loeffler House, Site Plan with Photo Key  
Figure 3. Loeffler House, First Floor Plan with Photo Key  
Figure 4. Loeffler House, Second Floor Plan with Photo Key

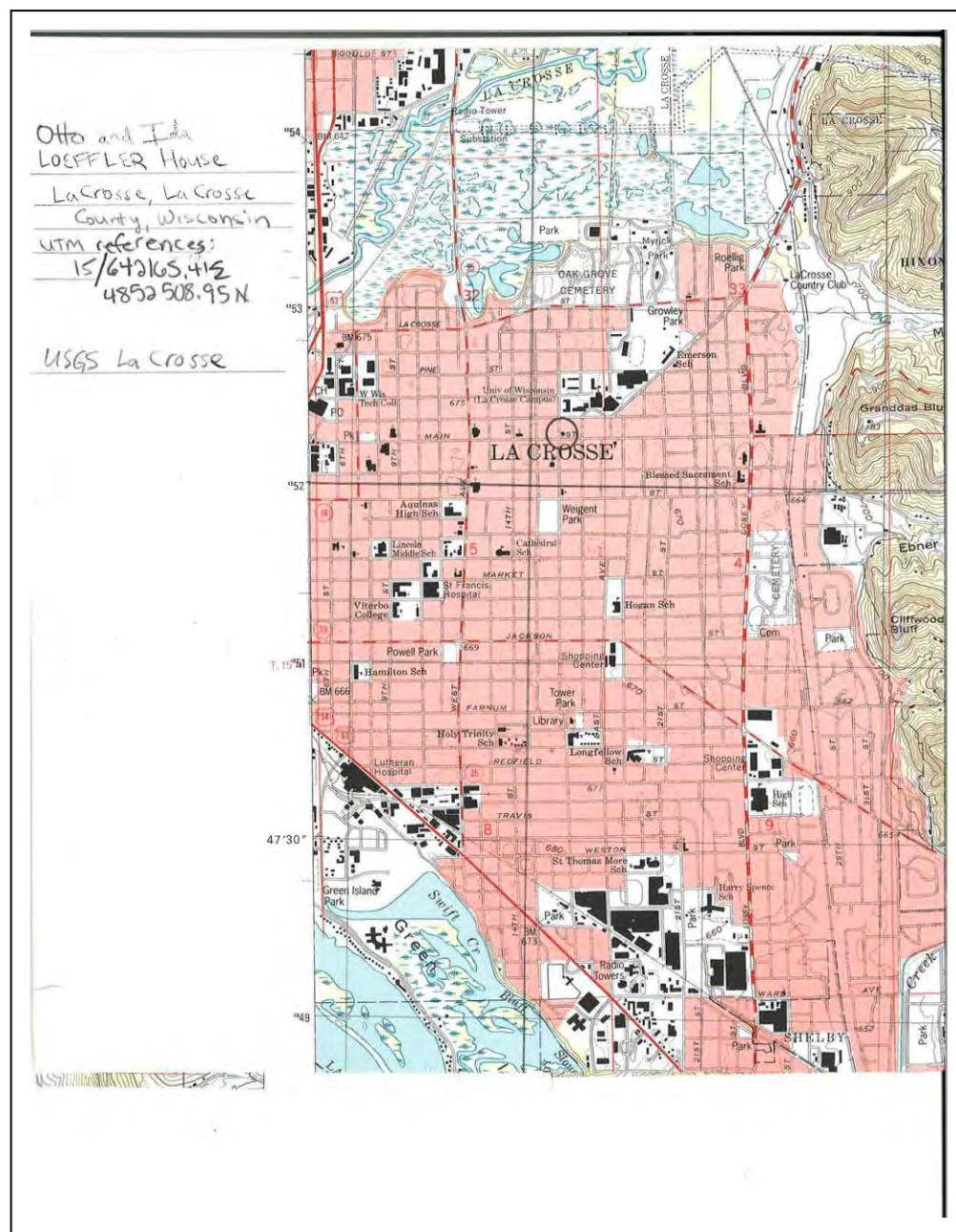
United States Department of the Interior  
National Park Service

National Register of Historic Places  
Continuation Sheet

Loeffler, Otto and Ida, House  
La Crosse, La Crosse County, Wisconsin

Section figures Page 2

Figure 1. Loeffler House, La Crosse, Wisconsin, USGS with UTM Reference



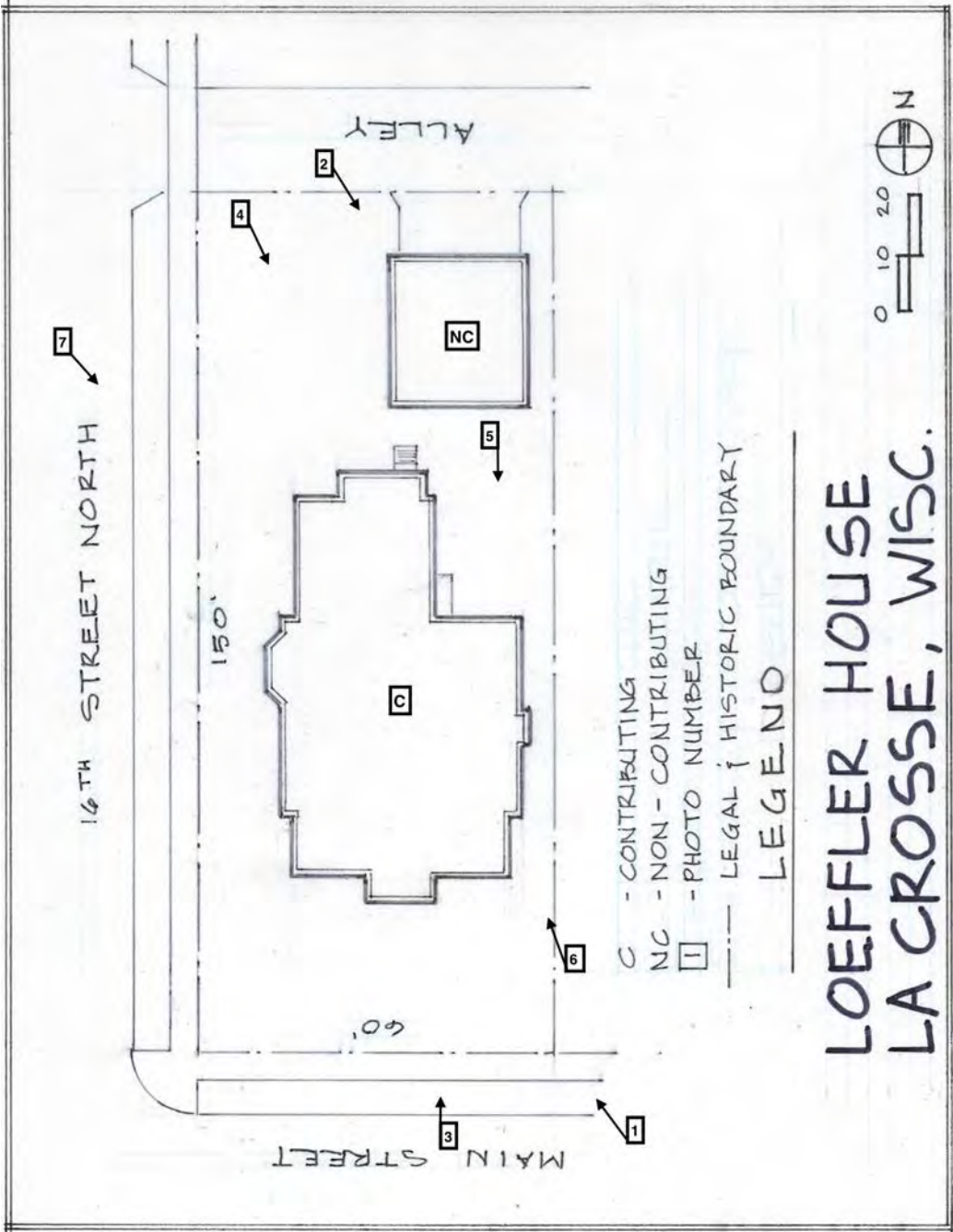
United States Department of the Interior  
National Park Service

National Register of Historic Places  
Continuation Sheet

Section figures Page 3

Loeffler, Otto and Ida, House  
La Crosse, La Crosse County, Wisconsin

Figure 2. Loeffler House, Site Plan with Photo Key



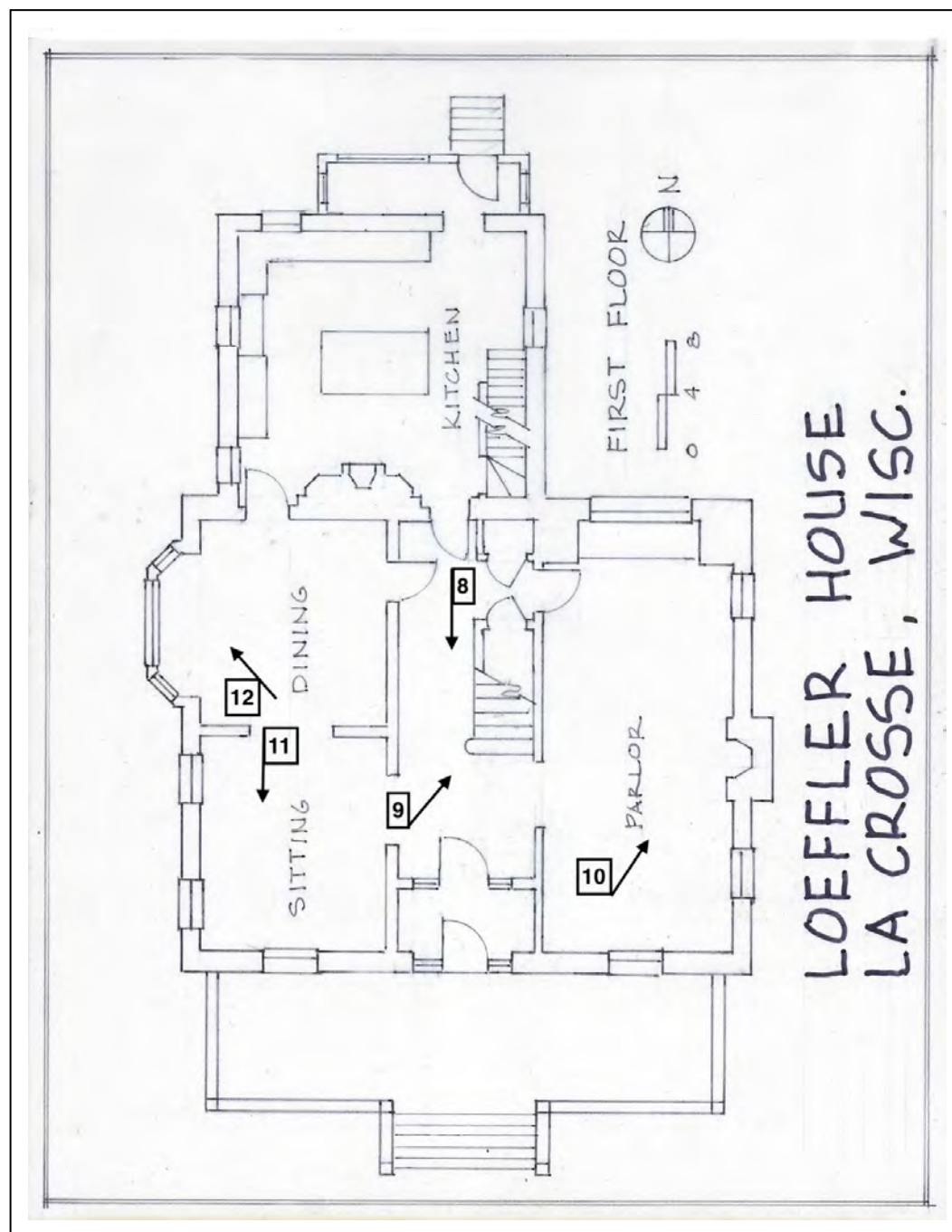
United States Department of the Interior  
National Park Service

National Register of Historic Places  
Continuation Sheet

Section figures Page 4

Loeffler, Otto and Ida, House  
La Crosse, La Crosse County, Wisconsin

Figure 3. Loeffler House, First Floor Plan with Photo Key





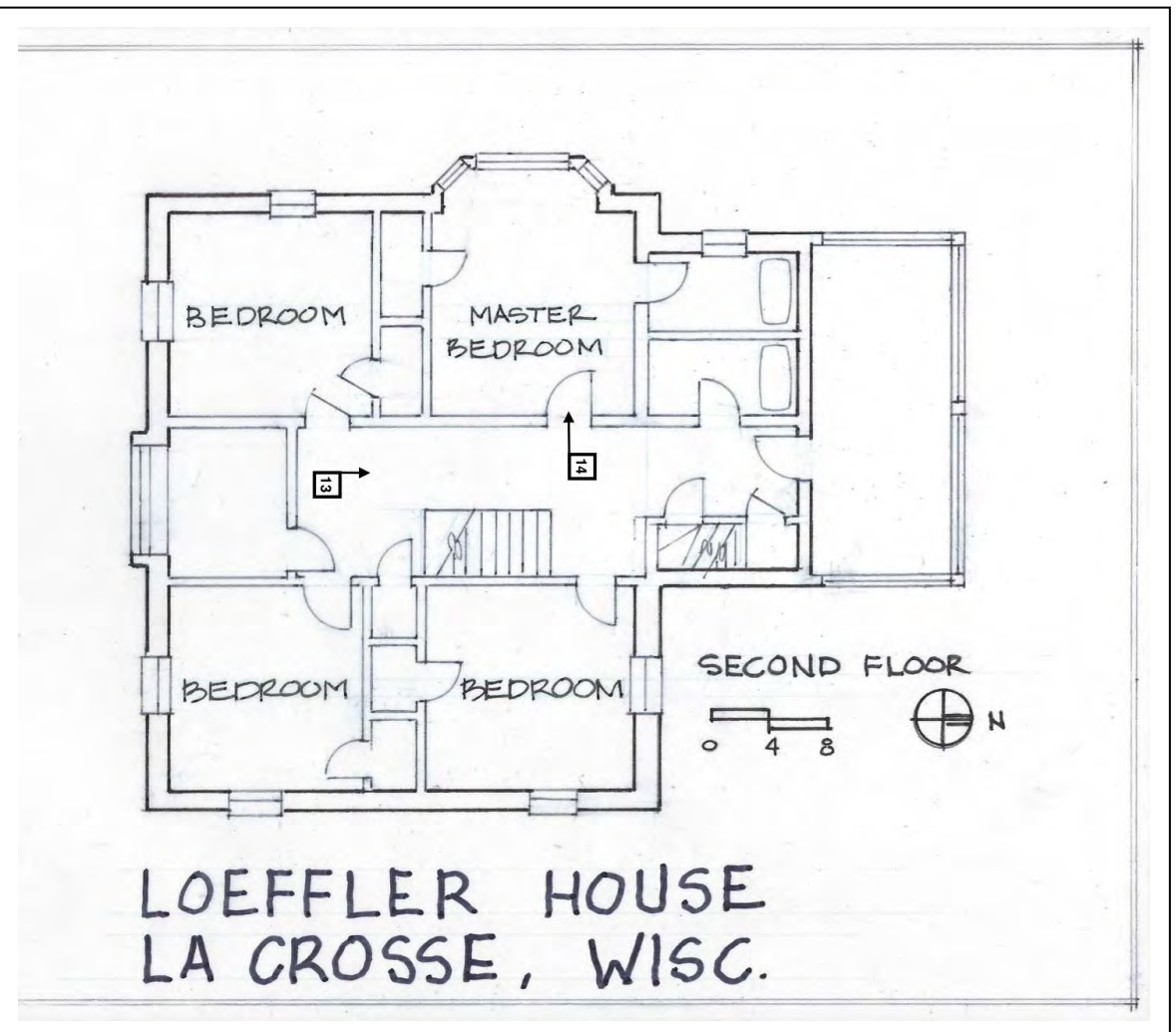
United States Department of the Interior  
National Park Service

National Register of Historic Places  
Continuation Sheet

Section figures Page 5

Loeffler, Otto and Ida, House  
La Crosse, La Crosse County, Wisconsin

Figure 4. Loeffler House, Second Floor Plan with Photo Key



End Figures













1603













































UNITED STATES DEPARTMENT OF THE INTERIOR  
NATIONAL PARK SERVICE

NATIONAL REGISTER OF HISTORIC PLACES  
EVALUATION/RETURN SHEET

Requested Action:

Property Name:

Multiple Name:

State & County:

Date Received: 6/7/2019      Date of Pending List: 6/25/2019      Date of 16th Day: 7/10/2019      Date of 45th Day: 7/22/2019      Date of Weekly List: 8/2/2019

Reference number:

Nominator:

Reason For Review:

<input type="checkbox"/> Appeal	<input type="checkbox"/> PDIL	<input type="checkbox"/> Text/Data Issue
<input type="checkbox"/> SHPO Request	<input type="checkbox"/> Landscape	<input type="checkbox"/> Photo
<input type="checkbox"/> Waiver	<input type="checkbox"/> National	<input type="checkbox"/> Map/Boundary
<input type="checkbox"/> Resubmission	<input type="checkbox"/> Mobile Resource	<input checked="" type="checkbox"/> Period
<input type="checkbox"/> Other	<input type="checkbox"/> TCP	<input type="checkbox"/> Less than 50 years
	<input type="checkbox"/> CLG	

☒ Accept      ☐ Return      ☐ Reject      7/22/2019 Date

Abstract/Summary  
Comments:

Recommendation/  
Criteria

Reviewer Barbara Wyatt      Discipline Historian

Telephone (202)354-2252      Date \_\_\_\_\_

DOCUMENTATION:    see attached comments : No    see attached SLR : No

If a nomination is returned to the nomination authority, the nomination is no longer under consideration by the National Park Service.



# Jill Billings

STATE REPRESENTATIVE  
95TH ASSEMBLY DISTRICT



# Jennifer Shilling

STATE SENATOR  
32ND SENATE DISTRICT

April 26, 2019

MAY 03 2019

Wisconsin Historic Preservation Review Board  
c/o Peggy Veregin  
Wisconsin Historical Society  
816 State Street  
Madison, WI 53706

BY: \_\_\_\_\_

To Whom It May Concern,

We are writing today in support of including La Crosse's Otto and Ida Loeffler House to the Wisconsin State Register of Historic Places and National Register of Historic Places. Declaring this house an historic place will ensure that important pieces of our history and heritage will continue to be known and celebrated by generations to come.

The Otto and Ida Loeffler House was built in 1909 and has been well preserved for 100 years. The Loeffler House is an excellent example of the Georgian Revival style and displays the distinguishing characteristics of this architecture of the pre-World War I era. The Georgian Revival style was built infrequently in Wisconsin, so preservation and recognition of this well-cared for home is of utmost significance.

Designating the Loeffler House preserves and promotes both the history of the architecture and the man who lived there. The house's original owner, Otto Loeffler was a noteworthy contributor to the La Crosse community in the early 1900s. Otto Loeffler was a notable businessman, a member of the La Crosse city board of education and organized the first Wisconsin-Illinois baseball league. As a member of the La Crosse Board of Education he was described by the La Crosse Tribune as one of the "most earnest and capable of the city's school commissioners, having given the public conscientious service throughout his incumbency." Otto Loeffler is an important historical figure in La Crosse and denoting his home an historic place continues the legacy he left on the community.

The rich architectural and historical legacy of the Otto and Ida Loeffler House make its protection and preservation as an historic place of critical importance to La Crosse and the state. We hope you will join us in supporting the Otto and Ida Loeffler House's addition of the state and national register of historic places.

Thank you for your time and consideration of this request.

Sincerely,

Handwritten signature of Jennifer Shilling in blue ink.

Jennifer Shilling  
State Senator  
32<sup>nd</sup> Senate District

Handwritten signature of Jill Billings in blue ink.

Jill Billings  
State Representative  
95<sup>th</sup> Assembly District





# WISCONSIN LEGISLATURE

P. O. Box 7882 Madison, WI 53707-7882

April 30<sup>th</sup>, 2019

Wisconsin Historic Preservation Review Board  
c/o Ms. Peggy Veregin  
Wisconsin Historical Society  
816 State St.  
Madison, WI 53706

Dear Ms. Veregin and members of the Historic Preservation Review Board,

The Nels and Nellie Johnson House is a Queen Anne style home that has stood at 850 1<sup>st</sup> Avenue South in Wisconsin Rapids since 1892. It has served many functions over the years, including as a temporary rectory for the Sister of St. Francis of Assisi.

I encourage the board to list this structure on the Wisconsin State Register of Historic Places and the National Register of Historic Places.

Thank you for your consideration.

Sincerely,

A handwritten signature in black ink, appearing to read "Patrick Testin", written in a cursive style.

**Patrick Testin**  
State Senator  
24<sup>th</sup> Senate District



May 16, 2019

Daina Penkiunas  
Wisconsin Historical Society  
Division of Historic Preservation  
816 State Street  
Madison, WI 53706

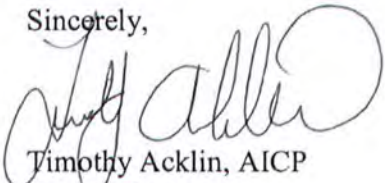
RE: National Register nomination  
Otto and Ida Loeffler House  
1603 Main Street, La Crosse, WI 54601

Wisconsin Preservation Review Board Members

The nomination for the Otto and Ida Loeffler House located at 1603 Main Street was reviewed by the City of La Crosse's Heritage Preservation Commission at their March 21, 2019 meeting. At their meeting the Heritage Preservation Commission unanimously voted to support the listing of this building to the Wisconsin State Register of Historic Places and the National Register of Historic Places.

If you have any questions please contact me at (608) 789-7391.

Sincerely,



Timothy Acklin, AICP  
Senior Planner

---

Council Member Jessica Olson, Chair  
Terry Collins, Vice Chair  
Chris Kahlow, David Riel,  
Marcus Zettler, Frederick Beseler



WISCONSIN  
HISTORICAL  
SOCIETY



TO: Keeper  
National Register of Historic Places

FROM: Peggy Veregin  
National Register Coordinator

SUBJECT: National Register Nomination

The following materials are submitted on this Sixth day of June 2019, for the nomination of the Otto and Ida Loeffler House to the National Register of Historic Places:

1	Original National Register of Historic Places Nomination Form
1	CD with NRHP Nomination form PDF
	Multiple Property Nomination form
14	Photograph(s)
1	CD with image files
1	Map(s)
4	Sketch map(s)/figures(s)/exhibit(s)
3	Piece(s) of correspondence
	Other:

COMMENTS:

	Please ensure that this nomination is reviewed
	This property has been certified under 36 CFR 67
	The enclosed owner objection(s) do or do not constitute a majority of property owners
	Other: