

Ramona Theatre

Frederick, Oklahoma

Rudy Williams

January 21, 1984

Frederick Arts and Humanities  
Council,

Frederick, Oklahoma

Interior West (Rear) Wall Area,  
Showing Screened-in Balcony  
Area, Looking West



Ramona Theatre  
Frederick, Oklahoma  
Rudy Williams  
January 21, 1984  
Frederick Arts and Humanities  
Council,  
Frederick, Oklahoma  
Interior South Wall, Showing  
Mini-Balconies  
Looking Southeast



Ramona Theatre

Frederick, Oklahoma

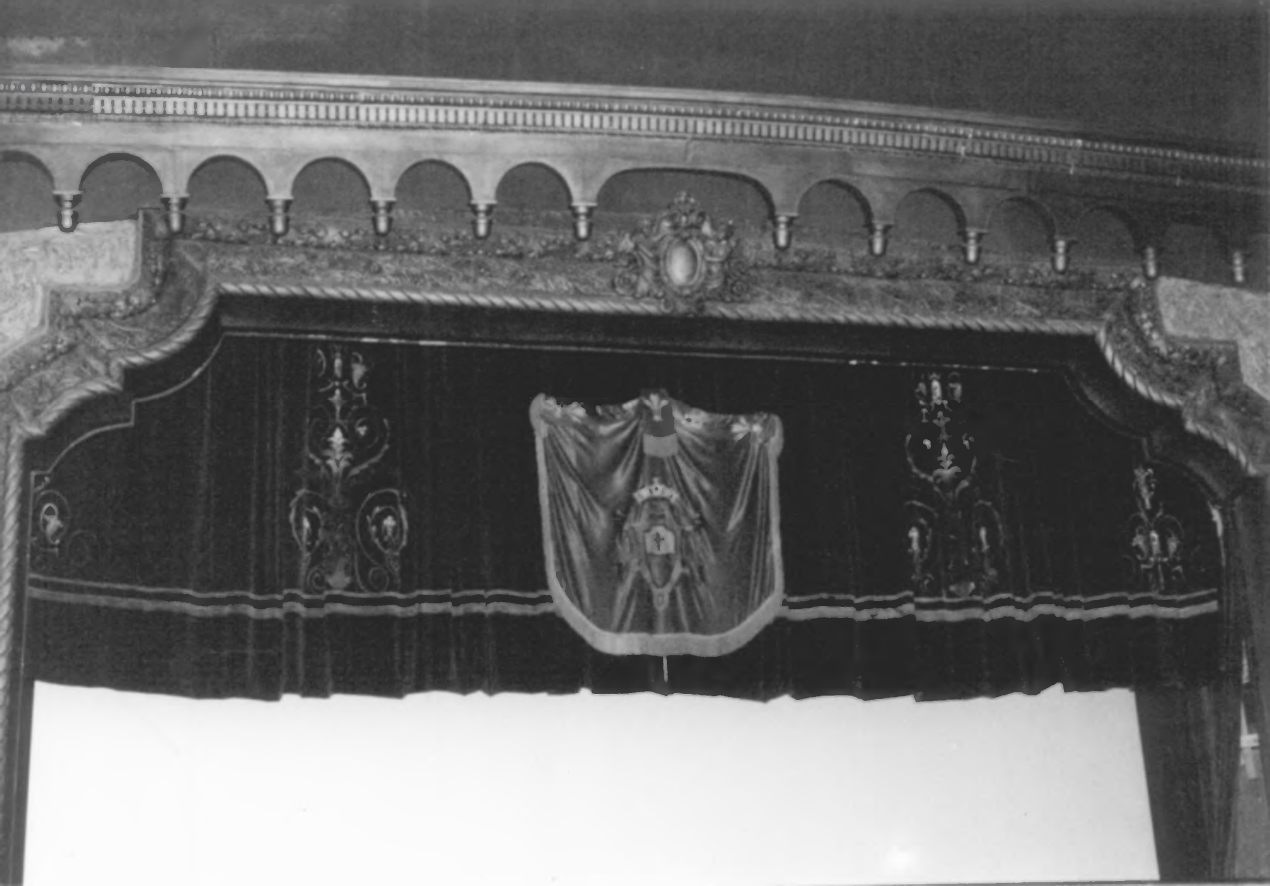
Rudy Williams

January 21, 1984

Frederick Arts and Humanities  
Council,

Frederick, Oklahoma

Interior, Stage, Looking East



Ramona Theatre

Frederick, Oklahoma

Rudy Williams

January 21, 1984

Frederick Arts and Humanities  
Council,

Frederick, Oklahoma

Interior Ornamentation Above  
Stage and Upper Stage Curtain,  
Looking East





Ramona Theatre

Frederick, Oklahoma

Rudy Williams

January 21, 1984

Frederick Arts and Humanities  
Council,

Frederick, Oklahoma

Interior, Upstairs Lobby Area,  
Looking North



Ramona Theatre

Frederick, Oklahoma

Rudy Williams

January 21, 1984

Frederick Arts and Humanities  
Council,

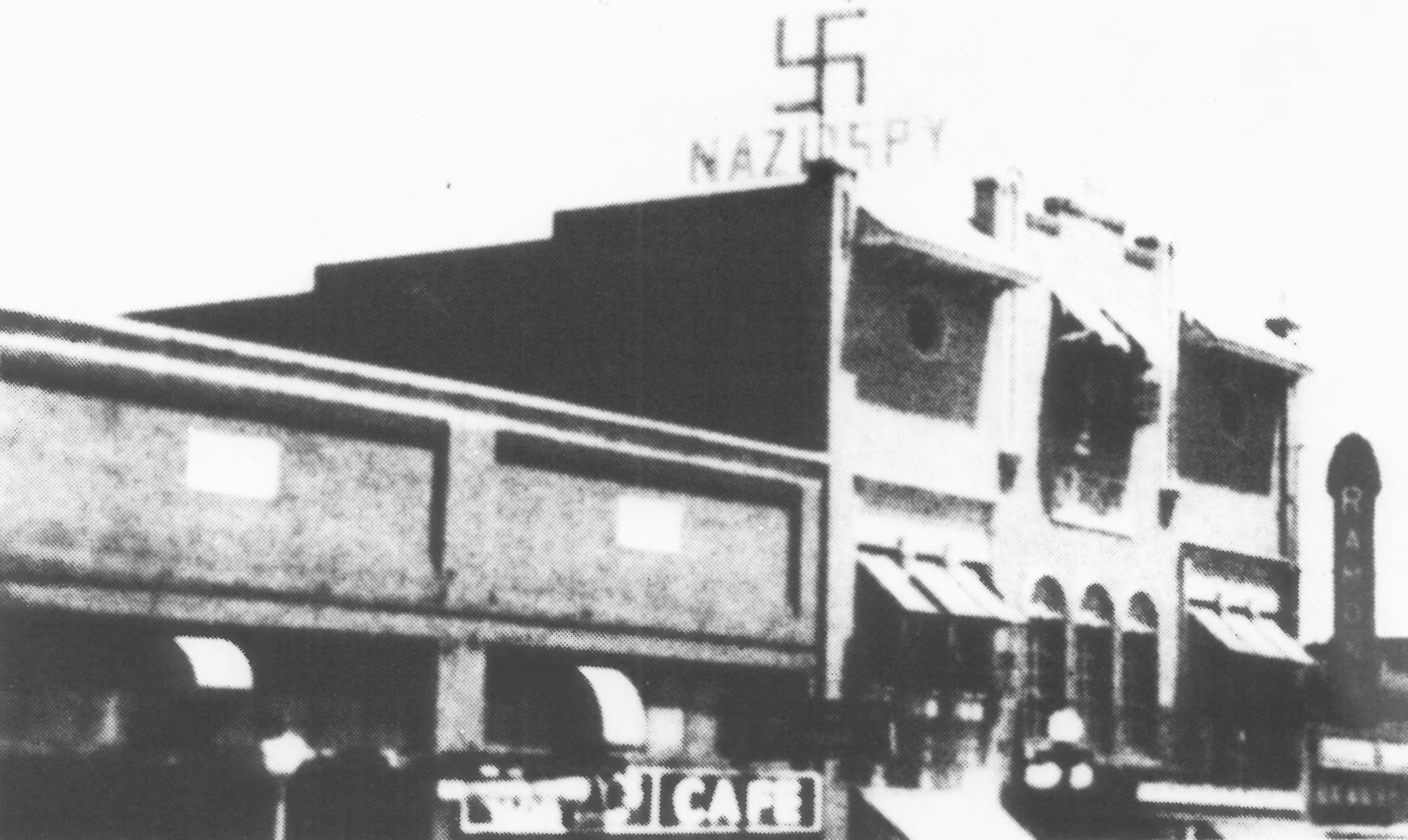
Frederick, Oklahoma

Interior, From Balcony, Looking  
North



Ramona Theatre  
Frederick, Oklahoma  
Rudy Williams  
January 21, 1984  
Frederick Arts and Humanities  
Council,  
Frederick, Oklahoma  
Upstairs Lobby Area,  
Looking Southwest

# FREDERICK



Ramona Theatre

Frederick, Oklahoma

G.L. Moore

Ca. 1941

Tillman County Historical

Society,

Frederick, Oklahoma

Looking Southeast, Showing

West Facade in 1941, With

Original Sign and Balconies.





Streetscape

Frederick, Oklahoma

Paul Fisher, 6/26/84

Association of South Central Oklahoma

Governments PO Box 1647 Duncan, OK

Looking Northeast, With Ramona

Theatre At Right.



Ramona Theatre

West Facade

Paul Fisher, 6/26/84

Association of South Central Oklahoma  
Governments

PO Box 1647      Duncan, Oklahoma

Looking East



JONI G  
600 & 800 DAILY

RADIO

JONI G  
600 & 800 NIGHTLY

NAPA AUTOMOTIVE PARTS CO. INC. PRODUCE OREGON

Ramona Theatre

Frederick, Oklahoma

Paul Fisher

October 28, 1982

Museum of the Great Plains,

Lawton, Oklahoma

Front Facade, Looking Southeast