



#1 KNOWLES ROAD AT KNOWLES (A)  
LANDING

View: NORTH

Butler-Simpson House in foreground.

Middle Haddam Historic District  
East Hampton, CT

GMPT

8/80



#2 KNOWLES ROAD AT KNOWLES (B)  
LANDING

View: SOUTH

Middle Haddam Historic District  
East Hampton, CT

GMPT

8/80



#3 KNOWLES ROAD AT KNOWLES LANDING

View: SOUTH, Yeoman-Taylor (C)

House at left, 1732

Middle Haddam Historic District

East Hampton, CT

GMPT

8/80



#4 CAPTAIN JOHN W. JOHNSON HOUSE  
27 Knowles Road, ca. 1795

Middle Haddam Historic District  
East Hampton, CT

GMPT

8/80





#5 MOODUS ROAD (E)

View: NORTHat Shipyard Road

Middle Haddam Historic District  
East Hampton, CT

GMPT

8/80

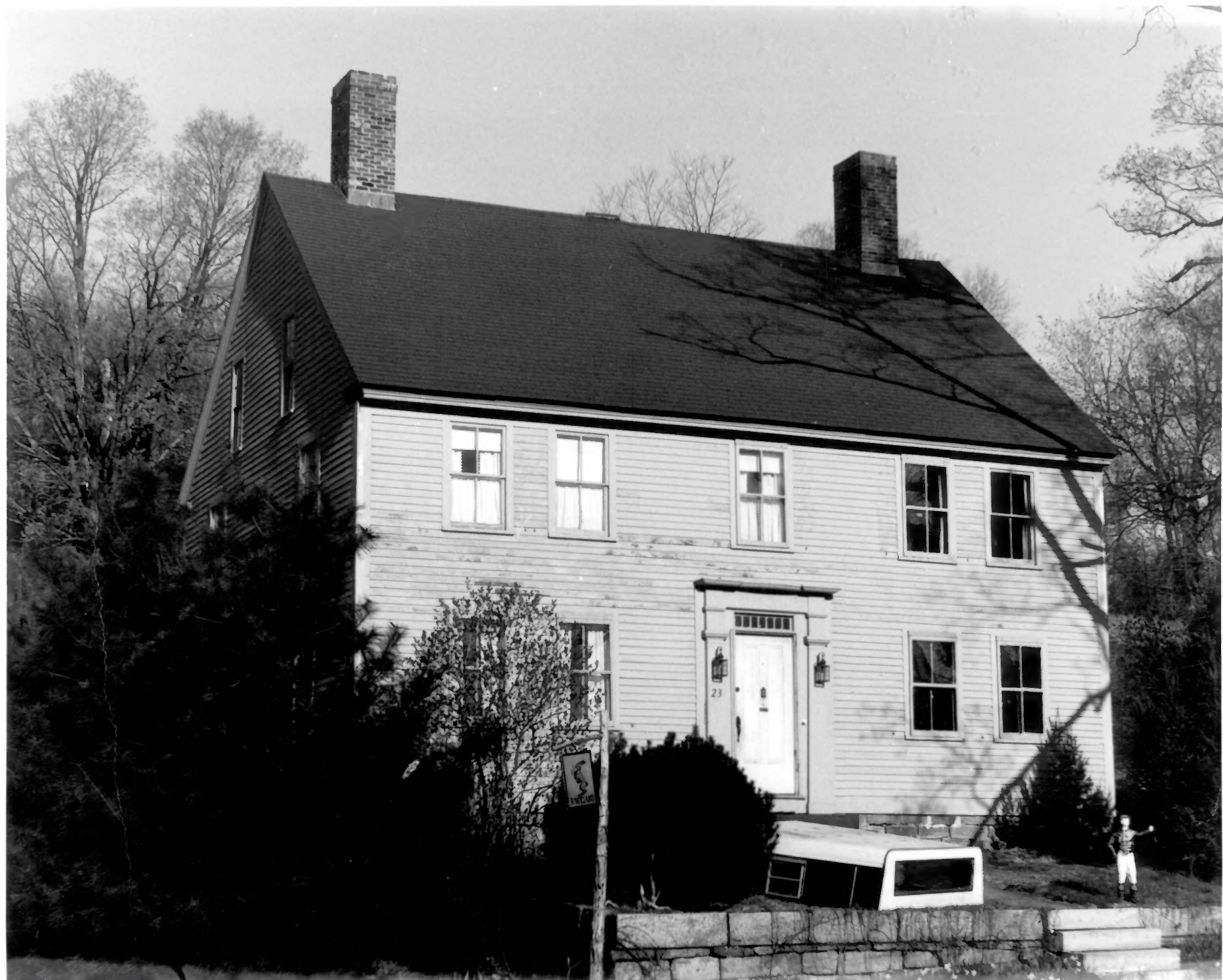


#6 MOODUS ROAD (east side) (F)  
View: SOUTH at Shipyard Road

Middle Haddam Historic District  
East Hampton, CT

GMPT

10/79



#7 CAPTAIN NATHANIEL DOANE HOUSE  
23 Moodus Road, ca. 1763

Middle Haddam Historic District  
East Hampton, CT

GMPT

8/80



LIBRARY

#8 BILL AND OVERTON STORE  
2 Knowles Road, 1799

Middle Haddam Historic District  
East Hampton, CT

GMPT

8/80





#9 JEREMIAH TAYLOR HOUSE  
1 Knowles Road, 1799-1800

Middle Haddam Historic District  
East Hampton, CT

GMPT

8/80



#10 HALL-TALLMAN HOUSE

3 Knowles Road, ca. 1800

Middle Haddam Historic District  
East Hampton, CT

GMPT

8/80



#11 JESSE HURD HOUSE  
106 Moodus Road, ca. 1812

Middle Haddam Historic District  
East Hampton, CT

GMPT

8/80



#12 HUNTINGTON & LAURA SELDEN HOUSE  
97 Moodus Road, 1823

Middle Haddam Historic District  
East Hampton, CT

GMPT

8/80





#13 ABEL SHEPARD HOUSE

111 Moodus Road, ca. 1800

Middle Haddam Historic District  
East Hampton, CT

GMPT

8/80



#14 BARTLETT SHEPARD HOUSE  
112 Moodus Road, ca. 1800

Middle Haddam Historic District  
East Hampton, CT

GMPT

8/80



#15 HARRY SHEPARD HOUSE

119 Moodus Road, ca. 1825

Middle Haddam Historic District  
East Hampton, CT

GMPT

8/80



#16 IRA LEE HOUSE

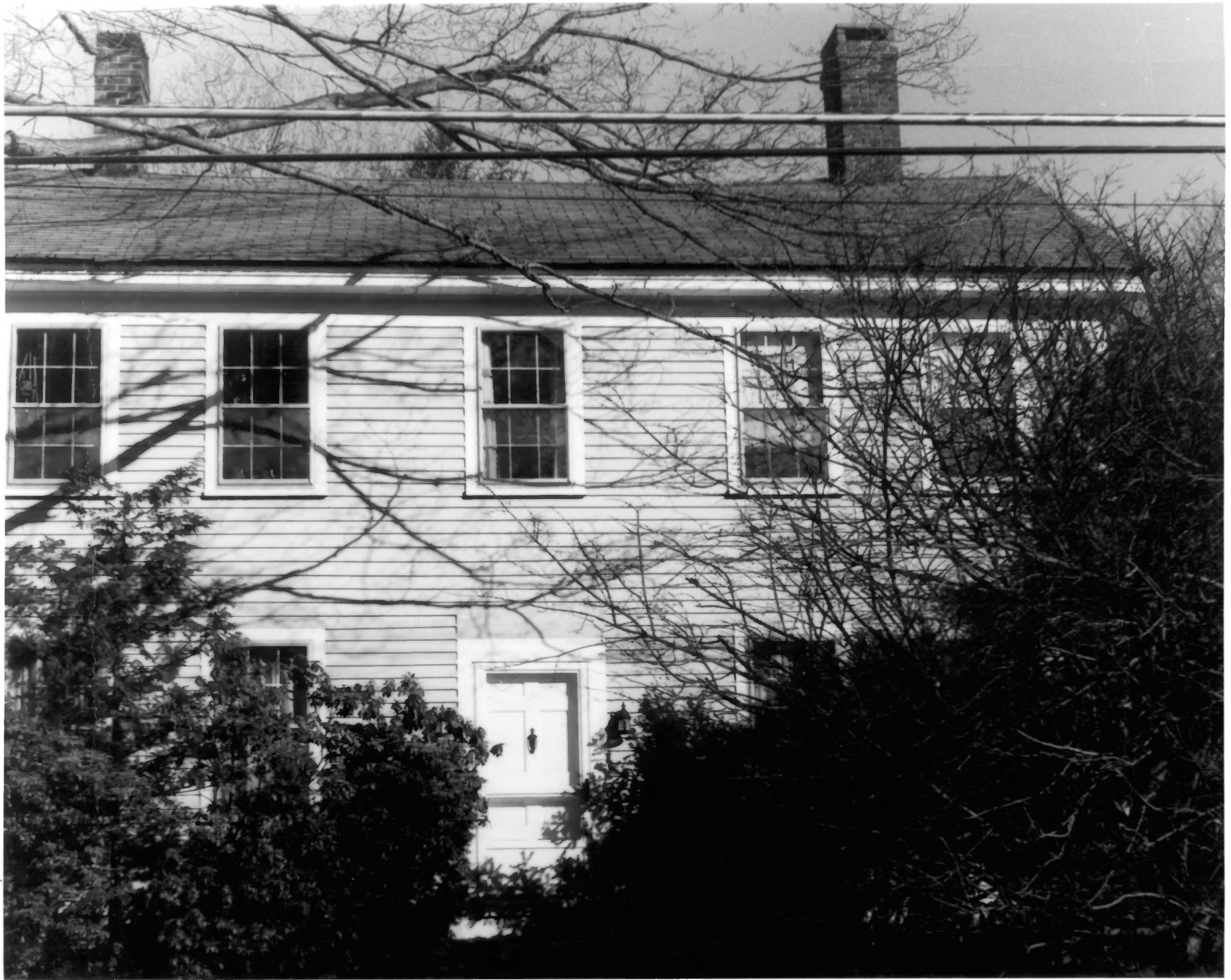
1 Blacksmith Hill Road, 1806

Middle Haddam Historic District  
East Hampton, CT

GMPT

8/80



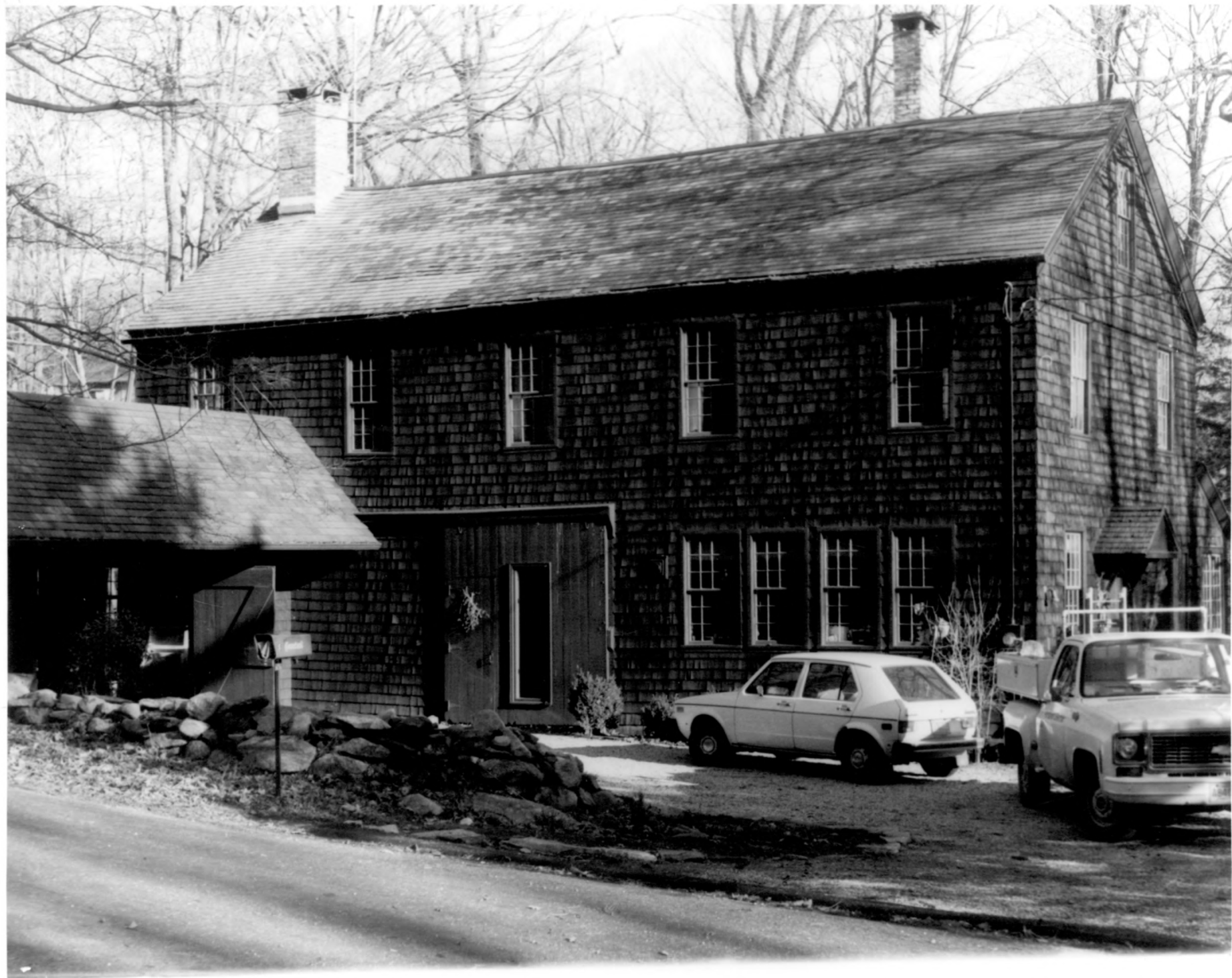


#17 JAMES HURLBUT HOUSE  
2 Keighley Pond Road, 1838

Middle Haddam Historic District  
East Hampton, CT

GMPT

8/80



#18 PARKER AND JUDSON FACTORY  
17 Shipyard Road, 1865

Middle Haddam Historic District  
East Hampton, CT

GMPT

8/80



#19 RAMSDELL HALL

16 Knowles Road, 1842

Middle Haddam Historic District  
East Hampton, CT

GMPT

8/80



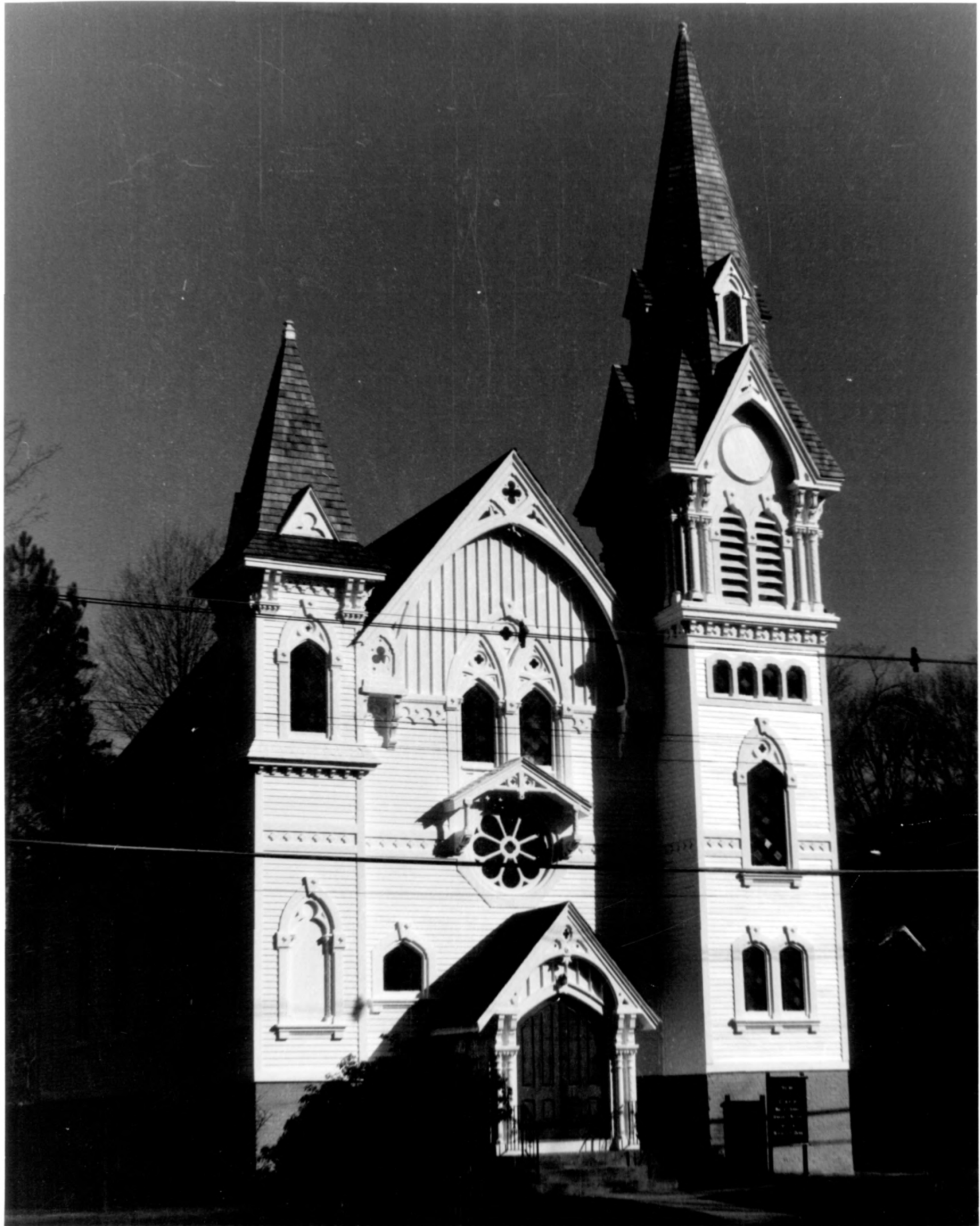
#20 HENRY L. STEWART HOUSE  
94 Moodus Road, 1860-65

Middle Haddam Historic District  
East Hampton, CT

GMPT

8/80





#21 SECOND CONGREGATIONAL CHURCH  
52 Moodus Road, rebuilt 1877

Middle Haddam Historic District  
East Hampton, CT

GMPT

8/80.



#22 GREY GABLES

18 Shipyard Road, 1928

Middle Haddam Historic District  
East Hampton, CT

GMPT

8/80



#23 MINE BROOK (D)

View: NORTHEAST; Note Factory  
(#27) and dam (#28) and site  
(#S-3) in background.

Middle Haddam Historic District  
East Hampton, CT

GMPT

10/79



#24 KEIGHLEY POND DAM

View: EAST

Middle Haddam Historic District  
East Hampton, CT

GMPT

5/83





#25 PARKER AND JUDSON DAM (#28)

also #S-3

View: NORTHEAST (from below)

Middle Haddam Historic District  
East Hampton, CT

GMPT

5/83



#26 STONE ARCH BRIDGE (north end)

View: SOUTHWEST

Middle Haddam Historic District  
East Hampton, CT

GMPT

5/83