



Streetscape: north side main street between 2nd and 3rd Avenues
Bloomington Prairie Commercial Historic District
Steele Co. Mn
D11653 | 4A/5

Streetscape: North Side Main Street between 011653 - 4A/5
2nd and 3rd Avenues

Blooming Prairie Commercial Historic District
Steele Co. MN

Photographer: Scott Kelly
June 1993

MN Historical Society, 345 Kellogg Blvd. W., St. Paul, MN 55102-1906

Looking NE



Streetscape: South Side of Main Street between Highway and 3rd Avenues
Blooming Prairie Commercial Historic District
Steele Co. Mn
011654 | 7

Streetscape: South side of Main Street between 011654-7
Highway and 3rd. Avenues

Blooming Prairie Commercial Historic District

Steele Co. MN

Photographer: Scott Kelly

June 1993

MN Historical Society, 345 Kellogg Blvd. W., St. Paul, MN 55102-1906

Looking SW
↓



Streetscape: South side Main Street between 3rd and 2nd Avenues
Blooming Prairie Commercial Historic District
Steele Co. Mn
011654/5

Streetscape: South Side Main Street between
3rd. and 2nd. Avenues

011659-5

Blooming Prairie Commercial Historic District
Steele Co. mn

Photographer: Scott Kelly
June 1993

mn Historical Society, 345 Kellogg Blvd. W., St. Paul, mn 55102-1906

Looking SW



United States Post Office
Blooming Prairie Commercial Historic District
Steele County, MN

011654-6

United States Post Office

011654-6

421 Main Street East

Blooming Prairie Commercial Historic District

Steele County, MN

Photographer: Scott Kelly

June 1993

MN Historical Society, 345 Kellogg Blvd. W., St. Paul, MN 55102-1906

Looking SW

1



Masonic Hall
Blooming Prairie Commercial Historic District
Steele Co., MN
011654-9

Masonic Hall
415 Main Street East

011654-9

Blooming Prairie Commercial Historic District
Steele County, MN

Photographer: Scott Kelly

June 1993

MN Historical Society, 345 Kellogg Blvd. W., St. Paul, MN 55102-1906

Looking SW

#2



Cooley Block
Blooming Prairie Commercial Historic District
Steele County, MN
011654-13

Codley Block
405 Main Street East

011654-13

Blooming Prairie Commercial Historic District
Steele County, MN

Photographer: Scott Kelly

June 1993

MN Historical Society, 345 Kellogg Blvd. W., St. Paul, MN 55102-1906

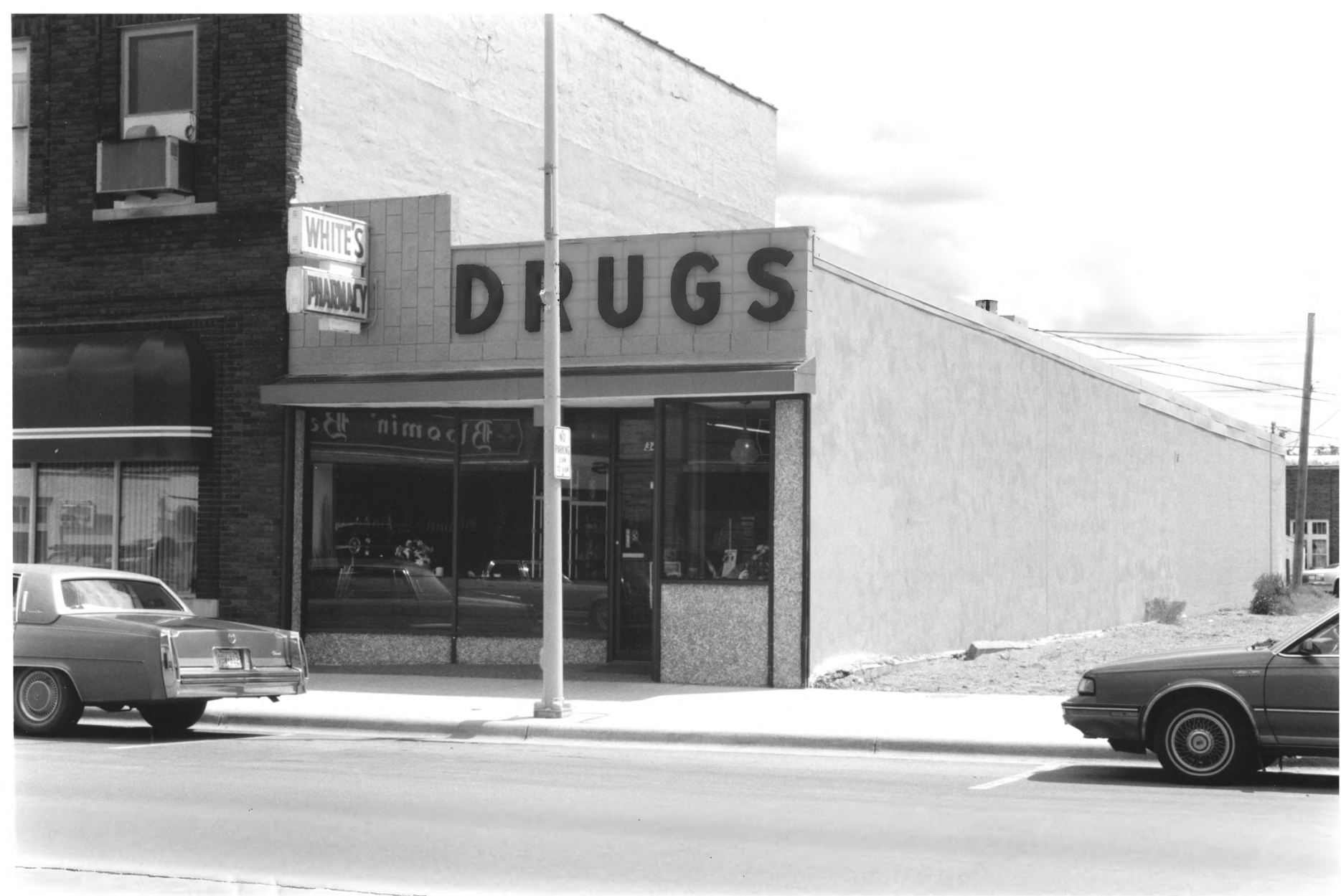
Looking SE

#5



First National Bank of Blooming Prairie
Blooming Prairie Commercial Historic District
Steele Co., MN
011654-14

The First National Bank of Blooming Prairie 011654-14
345 Main Street East
Blooming Prairie Commercial Historic District
Steele County, MN
Photographer: Scott Kelly
June 1993
MN Historical Society, 345 Kellogg Blvd. W., St Paul, MN 55102-1906
Looking SW
#6



White's Pharmacy (Non-Contributing) #7
Blooming Prairie Commercial Historic District
Steele Co. Mn
011654/16

White's Pharmacy (non-contributing)
341 Main Street East
Blooming Prairie Commercial Historic District
Steele Co. mn

011654-16

Photographer: Scott Kelly
June 1993

MN Historical Society, 345 Kellogg Blvd. W., St. Paul, mn 55102-1906
Looking SE
#7



Fattejsek-Kubicek Hardware #8
Blooming Prairie Commercial Historic District
Steele Co. Mn
D11654 / 17

Faltejek-Kubicek Hardware

011654-17

327 Main Street East

Blooming Prairie Commercial Historic District

Steele County, MN

Photographer: Scott Kelly

June 1993

MN Historical Society, 345 Kellogg Blvd. W., St. Paul, MN 55102-1906

Looking SW

#8



Saloon #9
Blooming Prairie Commercial Historic District
Steele Co. MN
D11654 / 21

011654-21

Saloon

321 Main Street East

Blooming Prairie Commercial Historic District

Steele Co. MN

Photographer: Scott Kelly

June 1993

MN Historical Society, 345 Kellogg Blvd. W., St. Paul MN 55102-1906

Looking S

#9



Harriet's Dres-wel and Ressler Lanes Cafe (non-contributing) #11
Blooming Prairie Commercial Historic District
Steele Co. Mn
011654 / 23

Harriet's Dress - Wel and Ressler Lanes Cafe (non-contributing) 011659-23
313 Main Street East

Blooming Prairie Commercial Historic District
Steele Co. MN

Photographer: Scott Kelly
June 1993

MN Historical Society, 345 Kellogg Blvd. W., St. Paul, MN 55102-1906
Looking SW
11



C. Lund and Son Blacksmith
Blooming Prairie Commercial Historic District
Steele County, MN
011653 - ZA/3

C. Lund and Son Blacksmith (non-contributing)
301 Main Street East
Blooming Prairie Commercial Historic District
Steele County, MN

011653-2A/3

Photographer: Scott Kelly

June 1993

MN Historical Society, 345 Kellogg Blvd. W., St. Paul, MN 55102-1906

Looking NE

#13



Grocery Store
Blooming Prairie Commercial Historic District
Steele County, MN
011653-8A/9

Grocery Store
308 Main Street East

011653 - SA/9

Blooming Prairie Commercial Historic District

Steele County, MN

Photographer: Scott Kelly

June 1993

MN Historical Society, 345 Kellogg Blvd. W., St. Paul, MN 55102-1906

Looking NE

#16



Ruzek Brothers Merchandise and E.O. Keenan Billiard Parlor #17
Blooming Prairie Commercial Historic District
Steele Co. mn
011653 | 9A/10

Ruzek Brothers Merchandise and E.O. Keenan Billard ^{011653-9A/10}
Parlor

314 Main Street East
Blooming Prairie Commercial Historic District
Steele Co. MN

Photographer: Scott Kelly
June 1993

MN Historical Society, 345 Kellogg Blvd. W., St. Paul, MN 55102-1906

Looking NE
#17



Restaurant and Rooming House
Blooming Prairie Commercial Historic District
Steele County, MN
011653 - 10A/11

Restaurant and Rooming House
322 Main Street East
Blooming Prairie Commercial Historic District
Steele County, MN
Photographer: Scott Kelly
June 1993
MN Historical Society, 345 Kellogg Blvd. W., St. Paul, MN 55102-1906
Looking NE
#18

011653-10A/11



Feeney Building #19
Blomving Prairie Commercial Historic District
Steele Co. MN
D11653 / 11A / 1A

011653-11A/12

Feeney Building
306 Main Street East

Blooming Prairie Commercial Historic District

Steele Co. Mn

Photographer: Scott Kelly

June 1993

Mn Historical Society, 345 Kellogg Blvd. W., St. Paul, Mn 55102-1906

Looking NE
#19



Center: Dry Goods and Clothing Store
Blooming Prairie Commercial-Historic District
Steele County, MN
011653-13A/14

Center: Dry Goods and Clothing Store

011653-13A/14

334 Main Street East

Blooming Prairie Commercial Historic District

Steele County, MN

Photographer: Scott Kelly

June 1993

MN Historical Society, 345 Kellogg Blvd. W., St. Paul, MN 55102-1906

Looking NE

#21

Farmers and Merchants State Bank #24
Blowing Rock Prairie Commercial Historic District
Steele Co. MN
011653 | 16A | 17



Farmers and Merchants State Bank

011653-16A/17

348 Main Street East

Blooming Prairie Commercial Historic District

Steele Co. MN

Photographer: Scott Kelly

June 1993

MN Historical Society, 345 Kellogg Blvd. W., St. Paul, MN 55102-1906

Looking NW

#24



Rex Theatre (non-contributing) #25
Blooming Prairie Commercial Historic District
Steele Co. mn
011653 / 19A / 20

Rex Theatre (non-Contributing)

011653-19A/20

108 3rd. Avenue NE

Blooming Prairie Commercial Historic District
Steele Co. MN

Photographer: Scott Kelly

June 1993

MN Historical Society, 345 Kellogg Blvd. W., St. Paul, MN 55102-1906

Looking W

#25