

**Fig. 3** A hollow space remains visible beneath the sidewalks of some areas filled in 1915. (Top) The chairwall or step-down system was constructed in 1923. Though below street-grade, some areas remain accessible. The low tunnel to the right is actually beneath the street. It is this space that gives the structural system a chair-like appearance in profile. (Bottom)



Fig. 5 Duane Street between Eleventh and Twelfth Streets, c. 1900  
*courtesy of Art Chan & Bonnie Oathes*

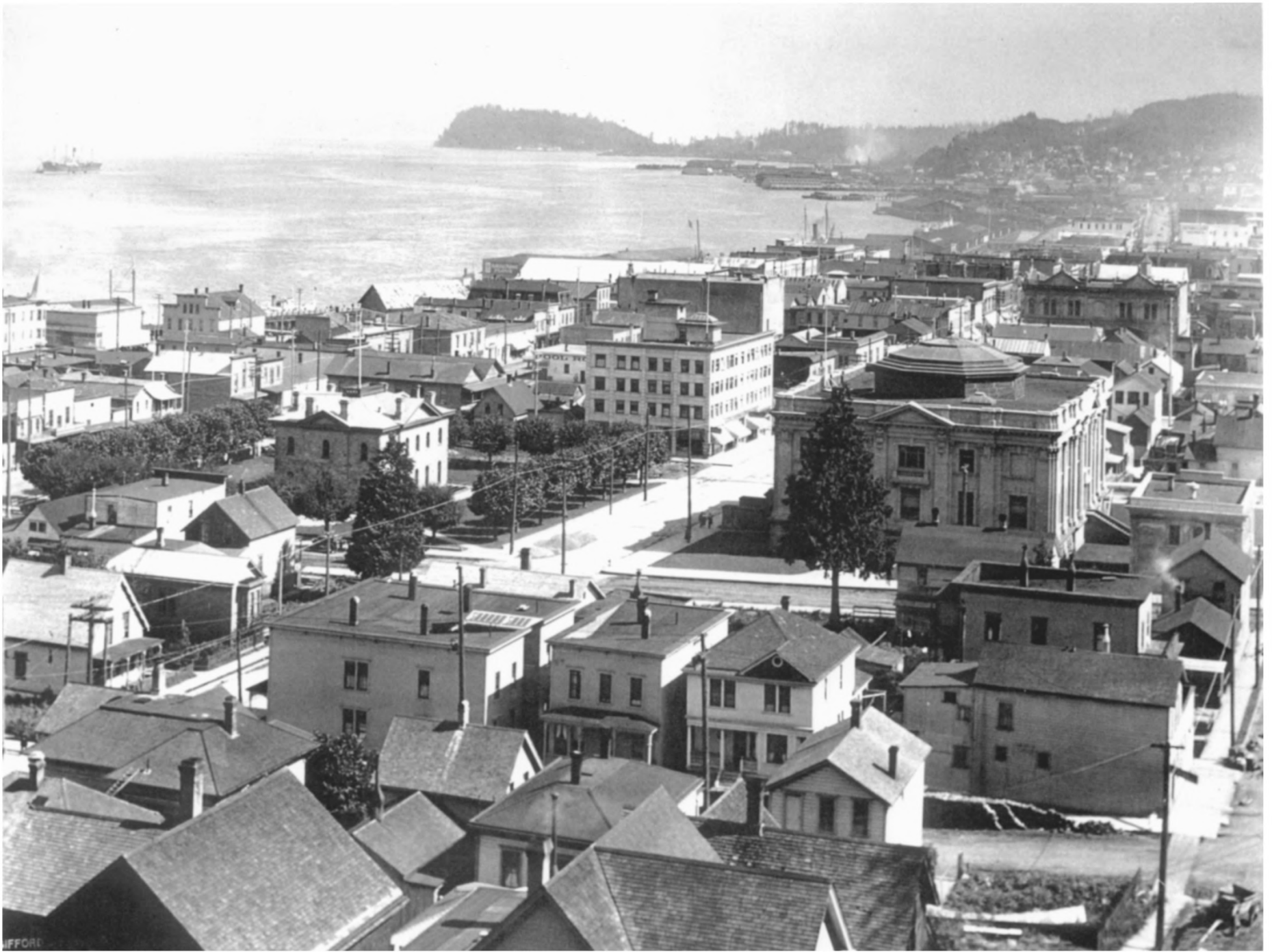


Fig. 6 Astoria, c. 1910, looking NE  
*courtesy of Art Chan & Bonnie Oathes*



Fig. 8 View from Astoria-North Shore Ferry, near landing at foot of Fourteenth Street,  
*courtesy of Art Chan & Bonnie Oathes*



Fig. 9 Commercial Street, between Twelfth and Fourteenth Streets, c. 1927, looking west  
*courtesy of Art Chan & Bonnie Oathes*



Fig. 11 Commercial Street, near Twelfth Street, c. 1900, looking west  
*courtesy of Clatsop County Historical Society*



Fig. 12 Clatsop County Courthouse, c. 1905  
*courtesy of Clatsop County Historical Society*



Fig. 13 Loyal Orange Lodge after conversion to Montgomery Ward & Co., c. 1930  
*courtesy of Art Chan & Bonnie Oathes*





Fig. 14 Hotel Astoria, c. 1940  
*courtesy of Art Chan & Bonnie Oathes*



**Fig. 15** Astoria Savings Bank, 1924  
*courtesy of Clatsop County Historical Society*



Fig. 16 Details reflect both Classic and Mediterranean influence. Above left: Osburn-O'Brien Building. Above right: Associated Building. Right: Walters Apartments





Fig. 17 Associated Building, c. 1925  
*courtesy of Art Chan & Bonnie Oathes*

*New Building To Rise On Downtown Astoria Corner*



Fig. 18 Klep Building, 1938



Fig. 19 Sanborn Dock Co. warehouse, c. 1908, foot of Ninth Street

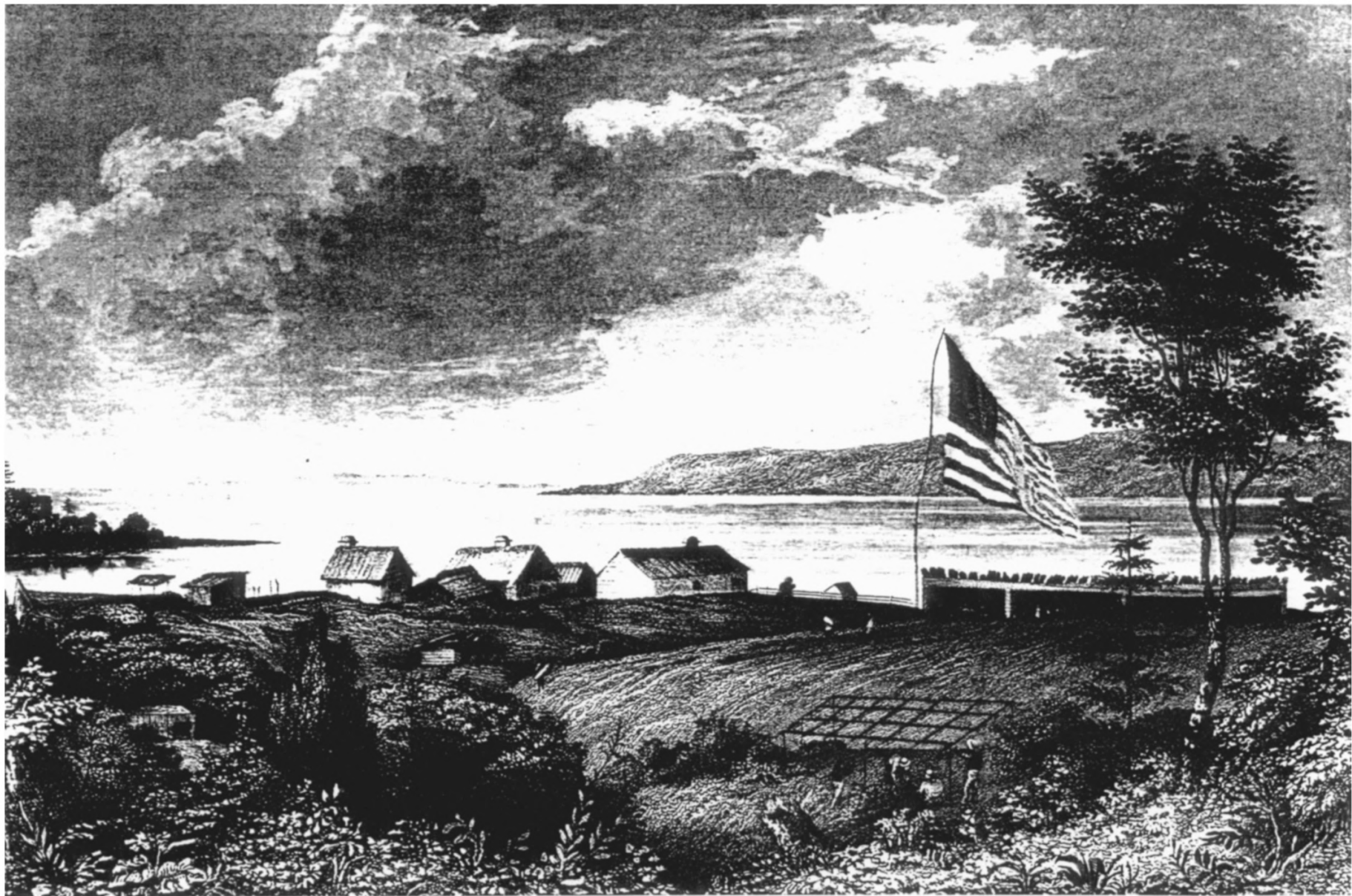


Fig. 20 Astoria, 1841



Fig. 21 The fire of 1883, looking east





Fig. 22 Hotel Douglas, c. 1924



Fig. 23 The fire of 1922, looking north  
*courtesy of Clatsop County Historical Society*



Fig. 24 Aftermath of fire of 1922  
*courtesy of Clatsop County Historical Society*



Fig. 25 Aftermath of fire of 1922  
*courtesy of Clatsop County Historical Society*



Fig. 26 Aftermath of the fire of 1922  
*courtesy of Clatsop County Historical Society*



Fig 27 Construction of chairwall, 1923, looking NW  
*courtesy of Art Chan & Bonnie Oathes*



Fig. 28 Commercial Street between Eleventh and Twelfth Streets, shortly after construction, 1923, looking east  
*courtesy of Art Chan & Bonnie Oathes*



Fig. 29 Temporary storefronts on Exchange Street, near Twelfth Street, 1923, looking west  
courtesy of Art Chan & Bonnie Oathes



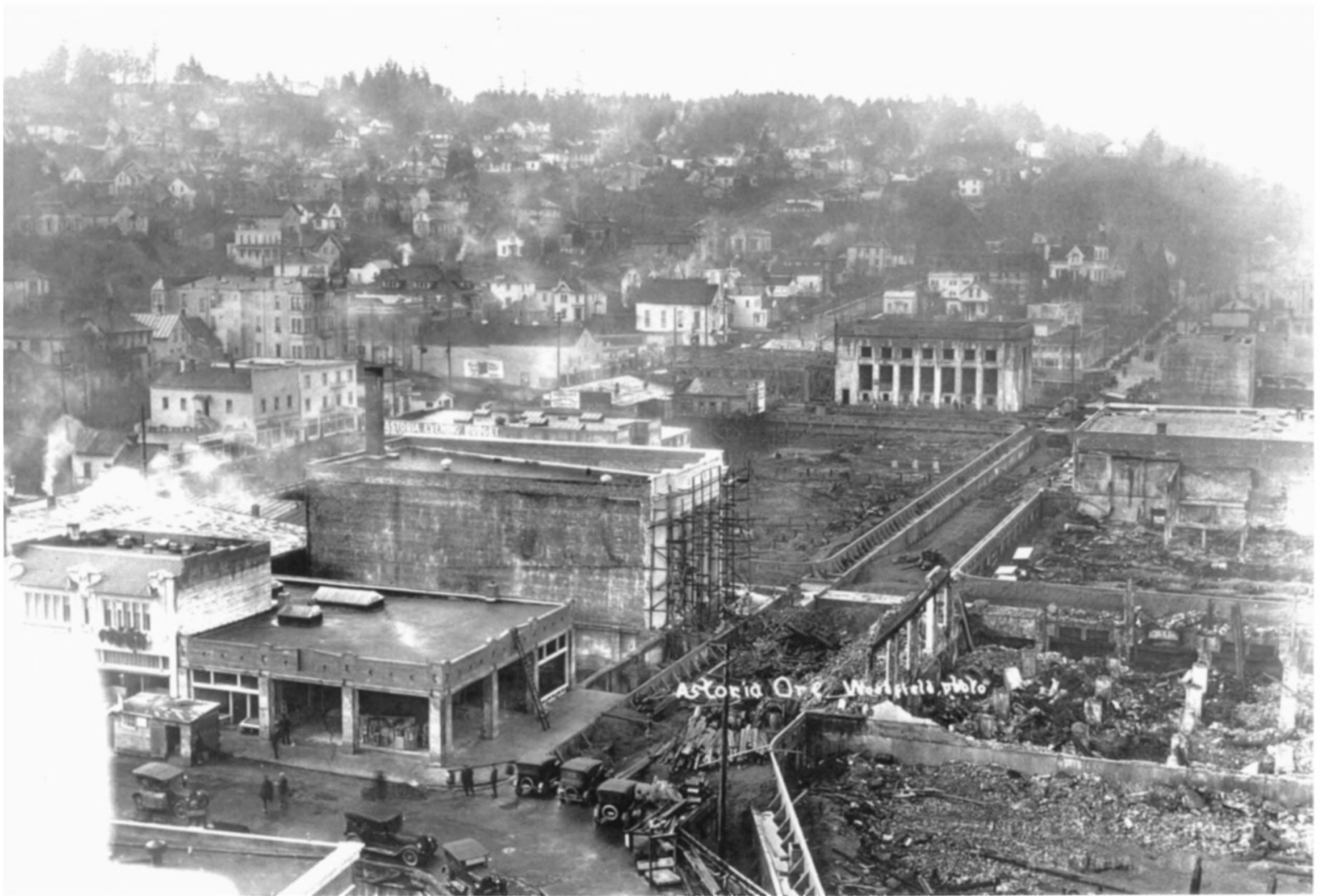


Fig. 30 View from Hotel Astoria, both Astoria National Bank and Astoria Savings Bank are under construction, 1923, looking SW  
*courtesy of Art Chan & Bonnie Oathes*



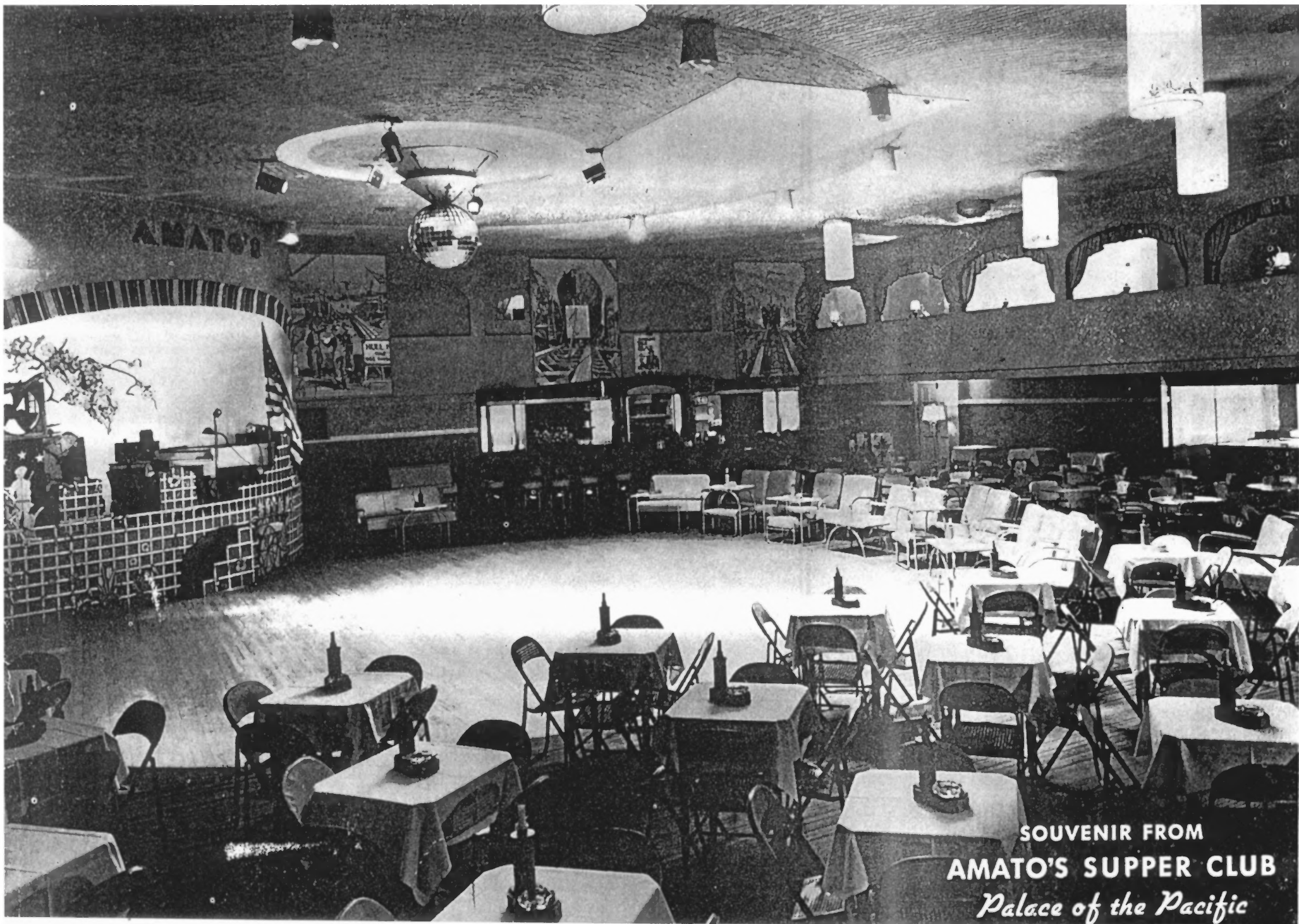
Fig. 31 Astoria National Bank, 1923  
*courtesy of Art Chan & Bonnie Oathes*



Fig. 32 Riviera Theater, 1925  
*courtesy of Art Chan & Bonnie Oathes*

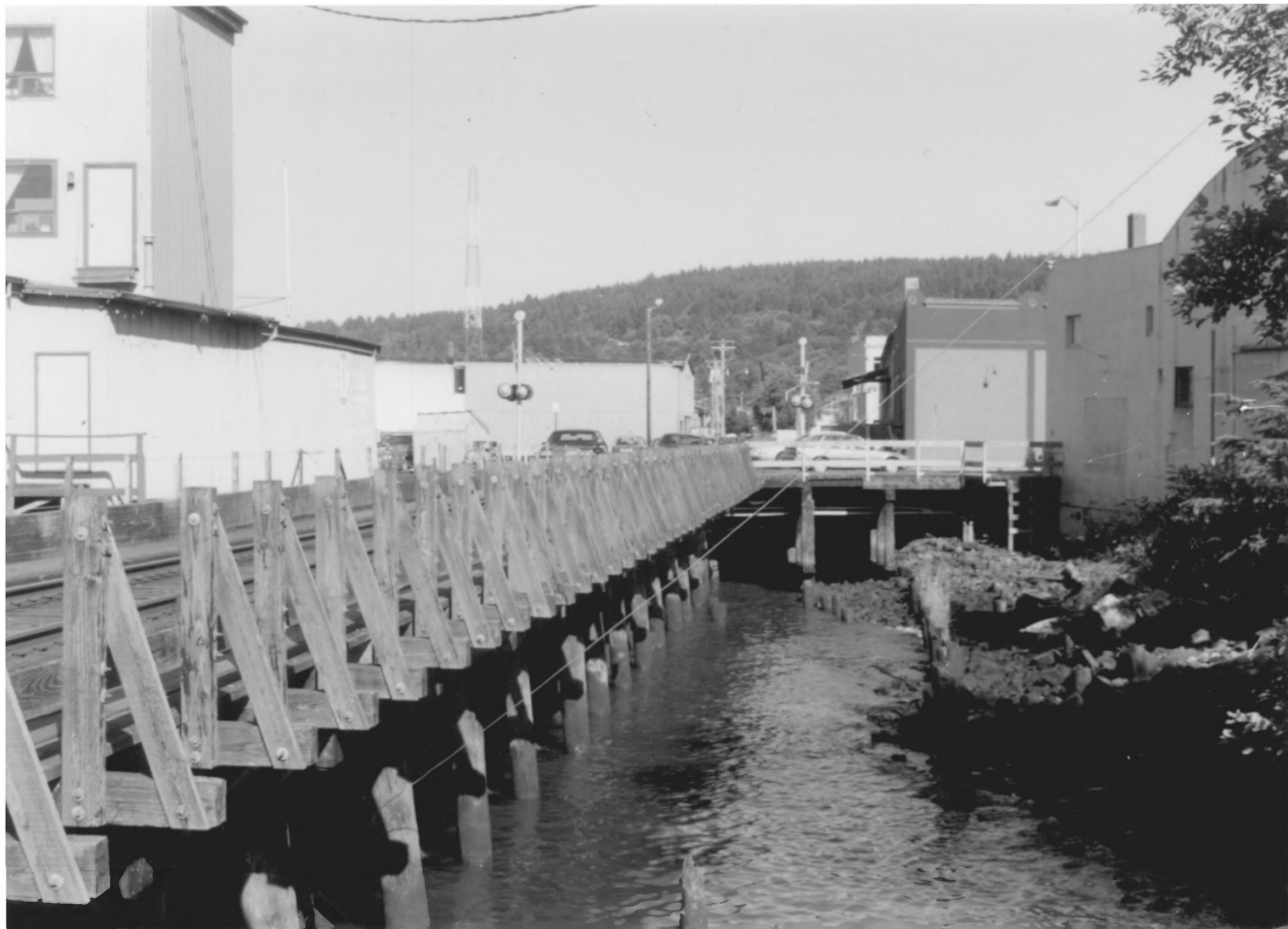


Fig. 33 Astor Building, Liberty Theater, 1924  
*courtesy of Art Chan & Bonnie Oathes*



SOUVENIR FROM  
AMATO'S SUPPER CLUB  
*Palace of the Pacific*

Fig. 34 Amato's Supper Club, c. 1943



Astoria Downtown Dist  
Clatsop County OR

1 OF 25





ASTORIA DOWNTOWN DIST.  
CLATSOP COUNTY OR

2 OF 25

R-154



Astoria Downtown Dist  
Clatsop County OR

3 DFZS

R-17

R-16



Astoria Downtown Dist  
Clatsop County OR

4 of 25

R-20

R-2.5

NO  
LEFT  
TURN

F  
O  
E

SPEED  
20

ONE  
WAY

ONE  
OFFICE



Astoria Downtown Dist  
Clatsop County OR

5 OF 25





ASTORIA DOWNTOWN DIST  
CLATSOP COUNTY OR

6 OF 25

R-43

R-45



ONE WAY  
←  
SPEED LIMIT 20  
R.F.K.

IRA'S

TOYOTA

SPECIALS  
\$2.99

COFFEE

IRAS

GRANDS • ANHILATE

Astoria Downtown Dist  
Clatsop County OR

7 of 25

R-44

R-46



Astoria Downtown Dist  
Clatsop County OR

8 OF 25

R-47



Astoria Down Town Dist  
Clatsop County  
OR

9 DE 15

R-55

R-57

R-59





Astoria Downtown Dist  
Clatsop County OR

10 of 25

R-58

R-60

R-61

R-63



CARRUTHERS BUILDING

Owl Drug

ONE WAY

Astoria Downtown Dist  
Clatsop County OR

11 OF 25

R-65

R-67



Astoria, Downtown Dist  
Clatsop County OR

12 OF 25

R-69

R-71

Loop  
Jacobsen  
JEWELERS

SPEED  
20

CHRIS



Astoria Downtown Dist  
Clatsop County OR

13 OF 25

R-76

R-77





Astoria Downtown Dist  
Clatsop County OR

14 OF 25

R-158

R-159

R-75



Astoria Downtown Dist  
Clatsop County OR

15 OF 25

R-66

R-149

Natural  
Foods



Astoria Downtown Dist  
Clatsop County 32

16 OF 25



Astoria, A. Thw. town Dist.  
Clatsop County, OR.

17 OF 25

R-161

R-160

R-





Astoria Downtown Dist  
Clatsop County OR

18 OF 25

R-106

R-104

R-103



Astoria Downtown Dist  
Customer Credit ~~for~~

20 OF 25

R-110

R-117

R-116



Astoria Downtown Dist  
Clatsop County OR

19 07F25

V-20



ASTORIA Downtown Dist  
Clatsop County OR

21 29 25

R-135

R-16

*Bellone*  
HEARING AID  
SERVICE

ART  
& Espresso

BELLONE  
Hearing Aid Service





ASTORIA Downtown Dist  
Clatsop County, OR

72 OF 25

R-21



Astoria Downtown Dist  
CLATSOP COUNTY OR

23, OF 25

2-20

2-49

R-47



Astoria Downtown Dist  
Clatsop County OR.

240F25

R-147

2-90

2-89



ONLY

Astoria  
Cafe

Jim's  
SHOES

Astoria Downtown Dist  
Clatsop County OR

250F25

R-77

R-78

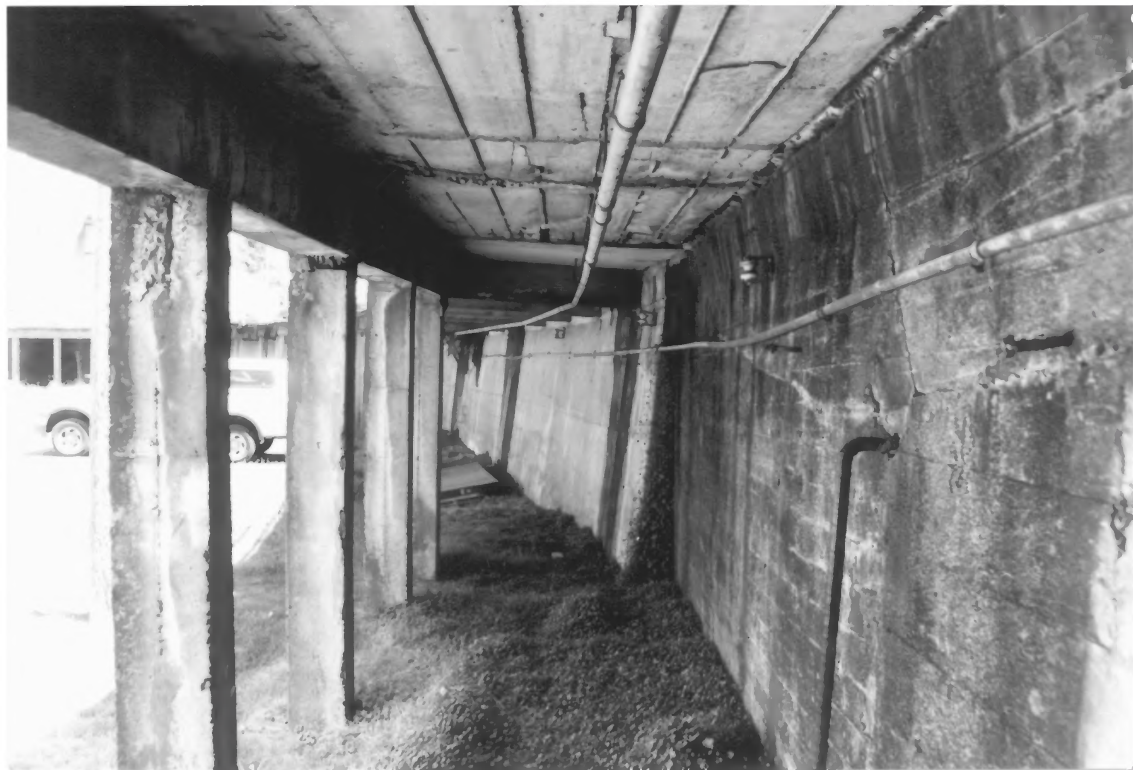
R-158





ASTORIA DOWNTOWN DIST  
CLATSOP COUNTY

1 OF 8



Astoria Downtown  
Dist

Catsop County

2 of 8



Astoria Post town  
Dist.

Watson County

3 of 8



ASTORIA Downtown Dist

LA 100 County

2008





ASTORIA Downtown Dist

Columbia County

5 of 8



Astoria Downtown

↑ West

← Clatsop County

6 OF 8



ASTORIA Downtown Dist

Catsop County

7 of 8



ASTORIA Downtown Dist

Clatsop County

8 of 8