



ONE OF PAWHUSKA'S PRINCIPAL BUSINESS STREETS

PAWHUSKA DOWNTOWN HISTORIC DISTRICT
Pawhuska, Osage County, Oklahoma

TRIUMVIR architecture + design

Historic Photograph, circa 1910-1915

Negative @ Oklahoma Historical Society

"One of Pawhuska's Principal Business Streets"

West side of Ki-he-kah Avenue, looking south

Photo #3

AUG 1 1915



STREET SCENE LOOKING SOUTH ON KIHIKAH AVENUE

PAWHUSKA DOWNTOWN HISTORIC DISTRICT

Pawhuska, Osage County, Oklahoma

TRIUMVIR architecture + design

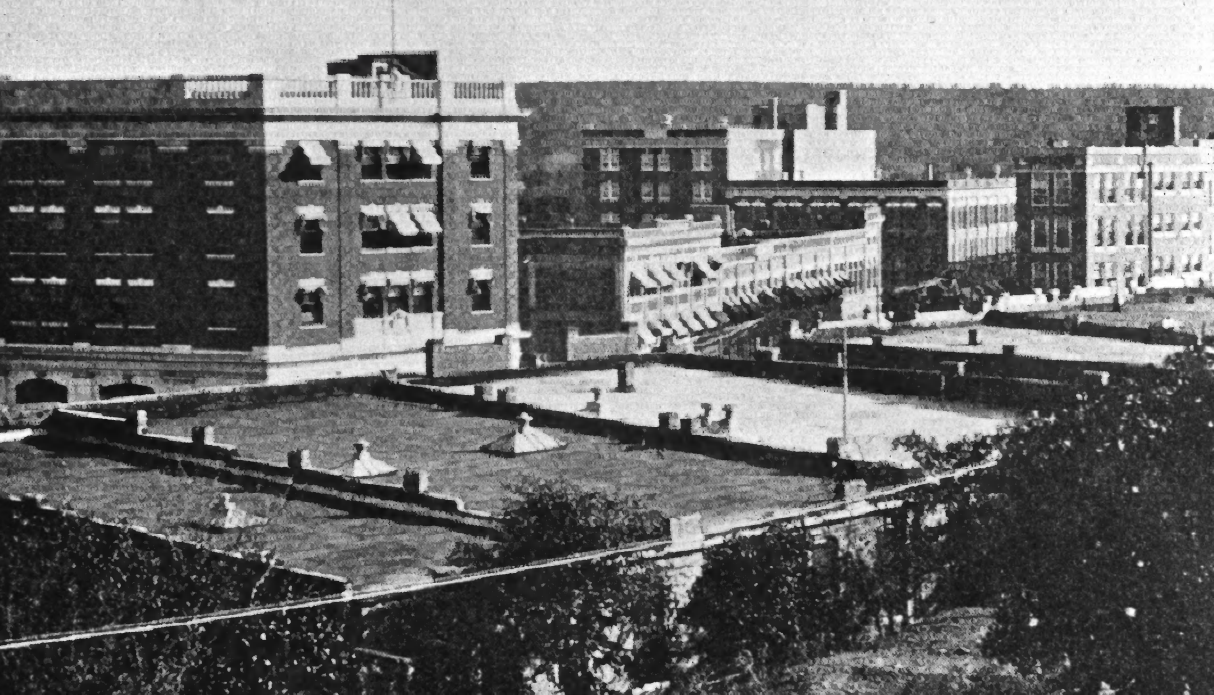
Historic Photograph, circa 1930

Negative @ Oklahoma Historical Society

"Street Scene Looking South on Kihekah Avenue"

CITIZENS BANK (left) & TRIANGLE BLDG. (right)

Photo #4



PAWHUSKA DOWNTOWN HISTORIC DISTRICT
Pawhuska, Osage County, Oklahoma

TRIUMVIR architecture + design
historic Photograph, circa 1930
Negative @ Oklahoma Historical Society
"Pawhuska Skyline"
Looking southeast from Agency Hill

Photo #5



ROOMS

OIL EXCHANGE

PAWHUSKA DOWNTOWN HISTORIC DISTRICT

Pawhuska, Osage County, Oklahoma

TRIUMVIR architecture + design

Historic Photograph, circa 1925

Negative @ Oklahoma Historical Society

Looking south on Ki-he-kah Avenue towards the
TRIANGLE BUILDING

Photo #6



Bandstand and hitching area now site of Triangle Building

PAWHUSKA DOWNTOWN HISTORIC DISTRICT
Pawhuska, Osage County, Oklahoma

TRIUMVIR architecture + design
Historic Photograph, circa 1907
Negative @ Oklahoma Historical Society
"Bandstand and hitching area now site of
Triangle Building"

Photo #7

AUG 13



A LARGE MERCANTILE HOUSE ON A PROMINENT DOWNTOWN CORNER

PAWHUSKA DOWNTOWN HISTORIC DISTRICT

Pawhuska, Osage County, Oklahoma

TRIUMVIR architecture + design

Historic Photograph, circa 1907-1910

Negative @ Oklahoma Historical Society

"A Large Mercantile House on a Prominent
Downtown Corner" (Corner of Osage Ave. and
E. Main St. with Bldg. #49-52 shown)

AUG 13 1986

Photo #8



PAWHUSKA DOWNTOWN HISTORIC DISTRICT

Pawhuska, Osage County, Oklahoma

TRIUMVIR architecture + design

Summer, 1985

Negative @ Oklahoma Historical Society

Streetscene, looking south at west side of
Ki-he-kah Avenue

Photo #9



PAWHUSKA DOWNTOWN HISTORIC DISTRICT

Pawhuska, Osage County, Oklahoma

TRIUMVIR architecture + design

Summer, 1985

Negative @ Oklahoma Historical Society

Streetscene, looking south at west side of
Ki-he-kah Avenue

Photo #10

AUG 13 1986



PAWHUSKA DOWNTOWN HISTORIC DISTRICT
Pawhuska, Osage County, Oklahoma

TRIUMVIR architecture + design
Summer, 1985

Negative @ Oklahoma Historical Society
Streetscene, looking north at west side of
Ki-he-kah Avenue

Photo #11

AUG 13 1985



The MERCANTILE Co.

GILLY & GIBBELL

WELCOME

PAWHUSKA DOWNTOWN HISTORIC DISTRICT

Pawhuska, Osage County, Oklahoma

TRIUMVIR architecture + design

Summer, 1985

Negative @ Oklahoma Historical Society

Streetscene, looking south at west side of
Ki-he-kah Avenue

Photo #12



Merrill's Jewels

TALSON
JEWELRY

WAXY

STOP

PAWHUSKA DOWNTOWN HISTORIC DISTRICT

Pawhuska, Osage County, Oklahoma

TRIUMVIR architecture + design

Summer, 1985

Negative @ Oklahoma Historical Society

Streetscene, looking north at west side of
Ki-he-kah Avenue

Photo #13

AUG 13 1986



CABLE-TV

Wright's SALES SERVICE
TV & APPLIANCES
282-1174

PAWHUSKA DOWNTOWN HISTORIC DISTRICT
Pawhuska, Osage County, Oklahoma

TRIUMVIR architecture + design
Summer, 1985

Negative @ Oklahoma Historical Society
Streetscene, looking north at east side of
Ki-he-kah Avenue

Photo #14

AUG 1 2 1986



PAWHUSKA DOWNTOWN HISTORIC DISTRICT

Pawhuska, Osage County, Oklahoma

TRIUMVIR architecture + design

Summer, 1985

Negative @ Oklahoma Historical Society

Streetscene, looking south at east side of
Ki-he-kah Avenue

Photo #15

AUG | 3 1985



C.R. ANTHONY COMPANY

HOTEL

V V V V V

W. B. B. B. B.

W. B. B. B. B.

W. B. B. B. B.

W. B. B. B. B.

W. B. B. B. B.

W. B. B. B. B.

PAWHUSKA DOWNTOWN HISTORIC DISTRICT

Pawhuska, Osage County, Oklahoma

TRIUMVIR architecture + design

Summer, 1985

Negative @ Oklahoma Historical Society

Streetscene, looking north at east side of
Osage Avenue

Photo #16



PAWHUSKA DOWNTOWN HISTORIC DISTRICT PAWHUSKA

Pawhuska, Osage County, Oklahoma

Pawhuska, Osage, Oklahoma

TRIUMVIR architecture + design

Summer, 1985 de. of Osage looking south

Negative @ Oklahoma Historical Society

Streetscene, looking south at east side of

Osage Avenue ph by Triumvir Architecture

Photo #17

AUG 1 2 1988



BOOKS
FIND REPLY PLACE

WELCOME

WELCOME



NO
U
TURN

TEN MINUTE
PARKING

PAWHUSKA DOWNTOWN HISTORIC DISTRICT

Pawhuska, Osage County, Oklahoma

TRIUMVIR architecture + design

Summer, 1985

Negative @ Oklahoma Historical Society

Streetscene, looking east at north side of
Main Street

Photo #18



39th ANNUAL INTERNATIONAL CAVALCADE

Regional
BANK

CRANTHONY
CO

PEDESTRIAN
CROSSING

PAWHUSKA DOWNTOWN HISTORIC DISTRICT
Pawhuska, Osage County, Oklahoma

TRIUMVIR architecture + design

Summer, 1985

Negative @ Oklahoma Historical Society

Streetscene, looking west at north side of
Main Street

Photo #19

AUG 13 1986



STOP

21
OWIE

W
17

PAWHUSKA DOWNTOWN HISTORIC DISTRICT

Pawhuska, Osage County, Oklahoma

TRIUMVIR architecture + design

Summer, 1985

Negative @ Oklahoma Historical Society

Streetscene, looking north at north side of
Main Street on Osage Avenue

Photo #20

AUG 13 1986



PAWHUSKA DOWNTOWN HISTORIC DISTRICT
Pawhuska, Osage County, Oklahoma

TRIUMVIR architecture + design

Summer, 1985

Negative @ Oklahoma Historical Society
Streetscene, looking east at north side of
Main Street

Photo #21

AUG 13 1985



WESTERN AUTO

PAWHUSKA DOWNTOWN HISTORIC DISTRICT

Pawhuska, Osage County, Oklahoma

TRIUMVIR architecture + design

Summer, 1985

Negative @ Oklahoma Historical Society

Streetscene, looking east at north side of
Main Street

Photo #22

CA
TO
TEL
MENTS
REHS

TAVERN
CAFE

BANK



V V V V V V

WELCOME

25th ANNUAL CAVALCADE

V V V V



SEVERAL
GARAGE



RENTAL
BY SEVERAL APPLIANCES FROM



PAWHUSKA DOWNTOWN HISTORIC DISTRICT
Pawhuska, Osage County, Oklahoma

TRIUMVIR architecture + design

Summer, 1985

Negative @ Oklahoma Historical Society

Streetscene, looking west at north side of
Main Street

Photo #23



Small balcony on the wooden building.

ROBINSON'S SHOE

SUNDA MOTO HOTEL
RESTAURANT
STEAK HOUSE

A
FIF

PAWHUSKA DOWNTOWN HISTORIC DISTRICT

Pawhuska, Osage County, Oklahoma PAWHUSKA

TRIUMVIR architecture + design

Summer, 1985

Negative @ Oklahoma Historical Society

Streetscene, looking west at south side of
Main Street

Photo #24

AUG 1 2 1986



WELCOME

WELCOME

BOORMAN'S
CHIEF

Fast Cook
Camera Shop

PAT NEWPORT INS

PAWHUSKA DOWNTOWN HISTORIC DISTRICT

Pawhuska, Osage County, Oklahoma

TRIUMVIR architecture + design

Summer, 1985

Negative @ Oklahoma Historical Society

Streetscene, looking east at south side of
Main Street

Photo #25



PAWHUSKA, DOWNTOWN HISTORIC DISTRICT

Pawhuska, Osage County, Oklahoma

TRIUMVIR architecture + design
summer, 1985

Negative @ Oklahoma Historical Society
Streetscene, looking east at south side of
Main Street

Photo #26

AUG 13 1986



National
BANK

39th Annual INTERNATIONAL CAVALCADE JULY 18-21
YOU ALL COME

IRBY
DRUGS

Irby
Drug



PAWHUSKA DOWNTOWN HISTORIC DISTRICT
Pawhuska, Osage County, Oklahoma

TRIUMVIR architecture + design

Summer, 1985

Negative @ Oklahoma Historical Society

Streetscene, looking west at south side of
Main Street

Photo #27

AUG 13 1986



PAWHUSKA DOWNTOWN HISTORIC DISTRICT
Pawhuska, Osage County, Oklahoma

TRIUMVIR architecture + design

Summer, 1985

Negative @ Oklahoma Historical Society

Streetscene, looking east at south side of
Main Street

Photo #28

AUG 13 1986



PAWHUSKA DOWNTOWN HISTORIC DISTRICT

Pawhuska, Osage County, Oklahoma

TRIUMVIR architecture + design

Summer, 1985

Negative @ Oklahoma Historical Society

Individual building, WHITING APARTMENTS,

#1-11, 721-701 Ki-he-kah Avenue (respectively)

Photo #29

AUG 13 1986



PAWHUSKA DOWNTOWN HISTORIC DISTRICT
Pawhuska, Osage County, Oklahoma

TRIUMVIR architecture + design

Summer, 1985

Negative @ Oklahoma Historical Society

Individual structure, SEVENTH STREET STAIR-
CASE and PUBLIC STORM SHELTER, #13

Photo #30

AUG 13 1986



BANK OF COMMERCE

NO STOPPING HERE

OK LIC 0123-

PAWHUSKA DOWNTOWN HISTORIC DISTRICT

Pawhuska, Osage County, Oklahoma

TRIUMVIR architecture + design

Summer, 1985

Negative @ Oklahoma Historical Society

Individual building, BANK OF COMMERCE, #20,
632 Ki-he-kah Avenue

Photo #31

AUG 13 1986



ESTABLISHED 1880

LY & GAMBILL
lawyers

ROBERT F. GALT
BRUCE W. GAMBILL

The MER

PAWHUSKA DOWNTOWN HISTORIC DISTRICT

Pawhuska, Osage County, Oklahoma

TRIUMVIR architecture + design

Summer, 1985

Negative @ Oklahoma Historical Society

Individual structure, SIXTH STREET STAIRCASE,
#32,

Photo #32

AUG 13 1986



The Triangle Building, Pawhuska, Oklahoma

PAWHUSKA DOWNTOWN HISTORIC DISTRICT

Pawhuska, Osage County, Oklahoma

TRIUMVIR architecture + design

Historic Photograph, circa 1925

Negative @ Oklahoma Historical Society

Individual building, TRIANGLE BUILDING,
#48, 101-107 Main Street

Photo # 33

AUG 1 2 1996



PAWHUSKA DOWNTOWN HISTORIC DISTRICT
Pawhuska, Osage County, Oklahoma

TRIUMVIR architecture + design

Summer, 1985

Negative @ Oklahoma Historical Society
Individual building, TRIANGLE BUILDING,
#48, 101-107 Main Street

Photo #34



MAIN

STOP
FOR PEDESTRIAN
IN CROSSWALK

COMPANY

PAWHUSKA DOWNTOWN HISTORIC DISTRICT
Pawhuska, Osage County, Oklahoma

TRIUMVIR architecture + design

Summer, 1985

Negative @ Oklahoma Historical Society
Individual building, TRIANGLE BUILDING,
#48, 101-107 Main Street, west and south
facades

Photo #35

AUG 13 1985



STOP

PAWHUSKA DOWNTOWN HISTORIC DISTRICT
Pawhuska, Osage County, Oklahoma

TRIUMVIR architecture + design

Summer, 1985

Negative @ Oklahoma Historical Society

Individual building, TRIANGLE BUILDING,
#48, 101-107 Main Street, south and east
facades

Photo #36

AUG 13 1986



LIBERTY CARR

LIBERTY CARR

PAWHUSKA DOWNTOWN HISTORIC DISTRICT

Pawhuska, Osage County, Oklahoma

TRIUMVIR architecture + design

Summer, 1985

negative @ Oklahoma Historical Society

Individual building, CITIZENS NATIONAL BANK

BUILDING, #57, 550-552 Ki-he-kah Avenue

Photo #37

AUG 13 1986



PAWHUSKA DOWNTOWN HISTORIC DISTRICT

Pawhuska, Osage County, Oklahoma

TRIUMVIR architecture + design

Summer, 1985

Negative @ Oklahoma Historical Society

Individual building, CITIZENS NATIONAL BANK
BUILDING, #57, 550-552 Ki-he-kah Avenue

Photo #38

AUG 1 3 1985



Whirlpool

Jack's APPLIANCE CENTER



Whirlpool

SEARS
AUTHORIZED CATALOG SALES MERCHANT

NO
MORE
PARKING
EMPLOYEE

Read Me
GAS
SAVE
THE
12 PM

PAWHUSKA DOWNTOWN HISTORIC DISTRICT
Pawhuska, Osage County, Oklahoma

TRIUMVIR architecture + design

Summer, 1985

Negative @ Oklahoma Historical Society

Individual buildings, BUDLONG BUILDING, #65,
(right), and JACKSON BUILDING, #66 (left),
610 and 612-614 Ki-he-kah Ave., respectively

Photo #39

AUG 13 1986

Post Office Building, 7th and Kihekah, Pawhuska, Okla.



PAWHUSKA DOWNTOWN HISTORIC DISTRICT PAWHUSKA

Pawhuska, Osage County, Oklahoma

TRIUMVIR architecture + design

Historic Photograph, circa 1925

Negative @ Oklahoma Historical Society

Individual building, WHITING BUILDING, #69,
622-628 Ki-he-kah Avenue, north and west
facades

Photo #40

AUG 13 1986



PAWHUSKA DOWNTOWN HISTORIC DISTRICT

Pawhuska, Osage County, Oklahoma

TRIUMVIR architecture + design

Summer, 1985

Negative @ Oklahoma Historical Society

Individual building, WHITING BUILDING, #69

622-628 Ki-he-kah Avenue, west facade

Photo #41



PAWHUSKA DOWNTOWN HISTORIC DISTRICT

Pawhuska, Osage County, Oklahoma

TRIUMVIR architecture + design

Summer, 1985

Negative @ Oklahoma Historical Society

Individual building, WHITING BUILDING, #69,

622-628 Ki-he-kah Avenue, north facade

Photo #42.

AUG 13 1985



181 OKLAHOMA 181

WESTERN AUTO

Handwritten text on a wall, possibly a notice or advertisement, partially obscured by the fire escape.

WESTERN AUTO

TUNE-UPS
HOPLERS
SEATERS

CABLES
PARKS

ALCOHOLIC DRINKERS

TOYOTA

HOTEL

PAWHUSKA DOWNTOWN HISTORIC DISTRICT

Pawhuska, Osage County, Oklahoma

TRIUMVIR architecture + design

Summer, 1985

Negative @ Oklahoma Historical Society

Individual building, OKLAHOMA BUILDING, #70,
115-117 East Main Street

Photo #43



National
BANK

PAWHUSKA DOWNTOWN HISTORIC DISTRICT

Pawhuska, Osage County, Oklahoma

TRIUMVIR architecture + design

Summer, 1985

Negative @ Oklahoma Historical Society

Individual building, FIRST NATIONAL BANK

BUILDING, #93, 100 West Main Street

Photo #44



NO U TURN

OFFICE OF THE SHERIFF

PAWHUSKA DOWNTOWN HISTORIC DISTRICT

Pawhuska, Osage County, Oklahoma

TRIUMVIR architecture + design

Summer, 1985 (before restoration)

Negative @ Oklahoma Historical Society

Individual building, PAWHUSKA CITY HALL, #98

118 West Main Street

Photo #45

HUB CLOTHIERS



OPEN

NO
PARKING

PAWHUSKA DOWNTOWN HISTORIC DISTRICT
Pawhuska, Osage County, Oklahoma

TRIUMVIR architecture + design
Summer, 1985

Negative @ Oklahoma Historical Society
Non-contributing building, HUB CLOTHIERS, #63,
605 Ki-he-kah Avenue

Photo #46

BEARS

BEARS
HARDWARE



PAWHUSKA DOWNTOWN HISTORIC DISTRICT PAWHUSKA

Pawhuska, Osage County, Oklahoma

Pawhuska, Osage, Oklahoma
TRIUMVIR architecture + design

Summer, 1985 Kibchah

Negative @ Oklahoma Historical Society

Non-contributing building, #64, 606-608

Ki-he-kah Avenue

located in downtown district
Photo #47

AJC 1 2 10



RENTALS
TV - STEREO - APPLIANCES - FURNITURE

MICHAEL'S
PHOTOGRAPHY
CUSTOM FRAMING

FREE - ESTIM
MICHAEL'S
PHOTOGRAPHY

CHEVROLET

PAWHUSKA DOWNTOWN HISTORIC DISTRICT
Pawhuska, Osage County, Oklahoma

TRIUMVIR architecture + design
Summer, 1985

Negative @ Oklahoma Historical Society
Non-contributing building, #77, 133 East Main
Street

Photo #48

AUG 13 1986



187

189

STATE FARM

INSURANCE

STATE FARM
INSURANCE
187-189

PAWHUSKA DOWNTOWN HISTORIC DISTRICT

Pawhuska, Osage County, Oklahoma

TRIUMVIR architecture + design

Summer, 1985

Negative @ Oklahoma Historical Society

Non-contributing building, #78, 139 East Main
Street

Photo #49

AUG 13 1986



IN THE
EYE
OF THE
CITY
AUTO LIFE
REPAIRS

REPAIRS

PAWHUSKA DOWNTOWN HISTORIC DISTRICT

Pawhuska, Osage County, Oklahoma

INTRUSION IN DISTRICT
TRIUMVIR architecture + design

Summer, 1985

Negative @ Oklahoma Historical Society

Non-contributing building, #79, 143 East Main
Street

Photograph by
Photo #50

AUG | 3 1986



PAWHUSKA DOWNTOWN HISTORIC DISTRICT

Pawhuska, Osage County, Oklahoma

TRIUMVIR architecture + design

Summer, 1985 (Survey), Spring, 1986 (Photo)

Negative @ Oklahoma Historical Society

Non-contributing building, #79, 143 East Main
Street

Photo #51



GREEN LIGHT
U.S. AUTO SUPPLY
ELECTRICAL

N & N
Hardware

Call for prices for
log skids

U.S. AUTO SUPPLY

PAWHUSKA DOWNTOWN HISTORIC DISTRICT
Pawhuska, Osage County, Oklahoma

TRIUMVIR architecture + design

Summer, 1985

Negative @ Oklahoma Historical Society

Non-contributing buildings, #'s 82, 83, and
84, 142-140-138 East Main Street, respectively

Phot # 52

AUG 13 1986

Back
Photo
Camera Shop

PAT NEWPORT. INS.



CLUB
CAFE

OPEN SUNDAY
CHORS



PAWHUSKA DOWNTOWN HISTORIC DISTRICT

Pawhuska, Osage County, Oklahoma

TRIUMVIR architecture + design

Summer, 1985

Negative @ Oklahoma Historical Society

Non-contributing building, #88, 122 East Main
Street

Photo #53



OPEN SUNDAY
CHORS

Open

Clifton

OPEN

Clifton's
Craft Shop
Handmade
Basketball
T-shirt
Pants
Shirts
Hats
Socks
Underwear
Shoes
Toys
Books
Records

PAWHUSKA DOWNTOWN HISTORIC DISTRICT
Pawhuska, Osage County, Oklahoma

TRIUMVIR architecture + design

Summer, 1985

Negative @ Oklahoma Historical Society

Non-contributing building, #53, 120 East Main
Street

Photo #54

AUG 1 2 1986



STOP
THE
POLICE
IN
CHARGE

PAWHUSKA DOWNTOWN HISTORIC DISTRICT

Pawhuska, Osage County, Oklahoma

TRIUMVIR architecture + design

Summer, 1985

Negative @ Oklahoma Historical Society

Non-contributing building, #96, 108-110 West
Main Street

Photo #55

AUG 13 1986



KIHEKAH THEATRE, PAWHUSKA DOWNTOWN HISTORIC DISTRICT

PAWHUSKA, OKLAHOMA

JANET HOLCOMBE

16 OCT 87

PAWHUSKA DOWNTOWN REVITALIZATION AND

PRESERVATION ASSOCIATION

NORTH FACADE OF BUILDING, FACING SOUTH

#55a

NOV

3 1987



SPECIAL FEATURE
TO-DAY

COPPER

CAFE

BAKERY & CONFECTIONERY

PAWHUSKA DOWNTOWN HISTORIC DISTRICT
Pawhuska, Osage County, Oklahoma

TRIUMVIR architecture + design

Historic Photograph, circa 1920

Negative @ Oklahoma Historical Society

Non-contributing building, #96, 108-110 West
Main Street

Photo #56

AJIC 1 2 1006



PAWHUSKA DOWNTOWN HISTORIC DISTRICT

Pawhuska, Osage County, Oklahoma

TRIUMVIR architecture + design

Summer, 1985

Negative @ Oklahoma Historical Society

Non-contributing building, #97, 114 West Main
Street

Photo # 57



Pawhuska Police Station

NO
LEFT
TURN

PAWHUSKA DOWNTOWN HISTORIC DISTRICT

Pawhuska, Osage County, Oklahoma

TRIUMVIR architecture + design

Summer, 1985

Negative @ Oklahoma Historical Society

Non-contributing building, #101, 124 West Main
Street

Photo # 58

AUG 13 1986