



Emerson School
1100 Sylvia Street
Louisville, Jefferson Co., Ky.

Hugh Foshee
Lou. Landmarks Commission
727 W. Main St., Louisville
May 1981

Photo 1. Hickory St. facade,
looking south.



Emerson School
1100 Sylvia Street
Louisville, Jefferson Co., Ky

Hugh Foshee
Lou. Landmarks Commission
727 W. Main St., Louisville
May 1981

Photo 2. Sylvia St. facade.



Emerson School
1100 Sylvia Street
Louisville, Jefferson Co., Ky.

Hugh Foshee
Lou. Landmarks Commission
727 W. Main St., Louisville
May 1981

Photo 3. 1923 addition, facing
Hickory St.

104-4

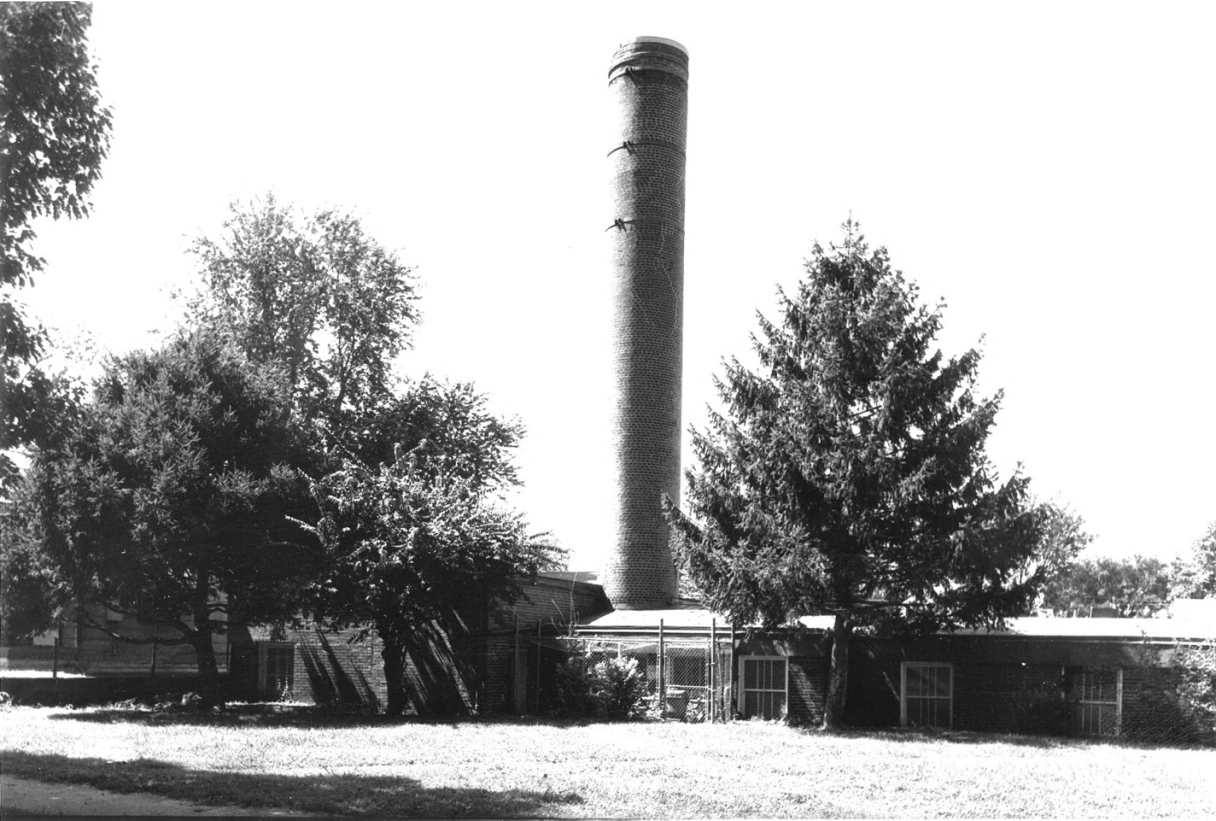


Emerson School
1100 Sylvia Street
Louisville, Jefferson Co., Ky.

Hugh Foshee
727 W. Main St., Louisville
July 1981

Photo 4. Rear of school,
looking west.

111-20a



Emerson School
1100 Sylvia Street
Louisville, Jefferson Co, Ky.

Hugh Foshee
Lou. Landmarks Commission
727 W. Main St., Louisville
July 1981

Photo 5. Boiler house, looking
south.

111-19a