

# National Register of Historic Places Registration Form

NOV 02 2013

This form is for use in nominating or requesting determinations for individual properties and districts. See instructions in National Register Bulletin, *How to Complete the National Register of Historic Places Registration Form*. If any item does not apply to the property being documented, check the "N/A" box. For functions, architectural classification, materials, and areas of significance, enter only categories and subcategories from the National Park Service.

## 1. Name of Property

Historic name Westmoreland Water Wheel & Gatepost

Other names/site number N/A

Name of related multiple property listing Historic and Architectural Resources in Knoxville and Knox County, Tennessee  
(Enter "N/A" if property is not part of a multiple property listing)

## 2. Location

Street & Number: NE and NW corners of intersection of Sherwood Dr. and Westland Ave.

City or town: Knoxville State: TN 37919 County: Knox

Not For Publication:  N/A Vicinity:  N/A

## 3. State/Federal Agency Certification

As the designated authority under the National Historic Preservation Act, as amended,  
I hereby certify that this  nomination  request for determination of eligibility meets the documentation standards for registering properties in the National Register of Historic Places and meets the procedural and professional requirements set forth in 36 CFR Part 60.

In my opinion, the property  meets  does not meet the National Register Criteria. I recommend that this property be considered significant at the following level(s) of significance:  
 national  statewide  local

Applicable National Register Criteria:  A  B  C  D

*Claudia...* 10/22/13  
Signature of certifying official/Title: Date

State Historic Preservation Officer, Tennessee Historical Commission  
State or Federal agency/bureau or Tribal Government

In my opinion, the property  meets  does not meet the National Register criteria.

\_\_\_\_\_  
Signature of Commenting Official: Date

\_\_\_\_\_  
Title: State of Federal agency/bureau or Tribal Government

Westmoreland Water Wheel & Gatepost  
 Name of Property

Knox County, Tennessee  
 County and State

**4. National Park Service Certification**

I hereby certify that this property is:

- entered in the National Register
- determined eligible for the National Register
- determined not eligible for the National Register
- removed from the National Register
- other (explain:)

Don Edson H. Beall  
 Signature of the Keeper

12-19-13  
 Date of Action

**5. Classification**

**Ownership of Property**

(Check as many boxes as apply.)

- Private
- Public – Local
- Public – State
- Public – Federal

**Category of Property**

(Check only **one** box.)

- Building(s)
- District
- Site
- Structure
- Object

**Number of Resources within Property**

(Do not include previously listed resources in the count)

Contributing	Noncontributing	
0	0	buildings
0	0	sites
3	0	structures
0	0	objects
3	0	Total

Number of contributing resources previously listed in the National Register 0

Westmoreland Water Wheel & Gatepost  
Name of Property

Knox County, Tennessee  
County and State

**6. Function or Use**

**Historic Functions**

(Enter categories from instructions)

INDUSTRY/PROCESSING/EXTRACTION/

Energy Facility

LANDSCAPE/ Other

**Current Functions**

(Enter categories from instructions)

LANDSCAPE/ Other

**7. Description**

**Architectural Classification**

(Enter categories from instructions.)

LATE 19<sup>TH</sup> AND 20<sup>TH</sup> CENTURY REVIVALS: Tudor Revival

**Materials:** (enter categories from instructions.)

Principal exterior materials of the property:

STONE: Slate, East Tennessee Marble; METAL: Steel

**Narrative Description**

The Westmoreland Water Wheel and Gatepost (*see Photo 1-3*) are located on the east and west sides of Sherwood Drive respectively at its intersection with Westland Avenue. Together, these structures mark the eastern entrance to the Westmoreland Heights Subdivision on the west side of Knoxville (2010, pop. 180,761). Both are located within the City of Knoxville-owned right-of-way of Sherwood Drive. The Westmoreland Wheelhouse (*See Photos 4-7*) was built in 1923 in the Tudor Revival style. The Gatepost (*See Photos 8 & 9*) was built opposite the Wheelhouse in 1925, duplicating its style characteristics. Both the Wheelhouse and Gatepost were designed by Charles I. Barber, of the regionally significant architectural firm of Barber and McMurry, and were constructed using rough-faced East Tennessee marble laid in irregular courses and have slate roofs. They were built by R. A. Callaway with the Tennessee Mill & Mine Supply

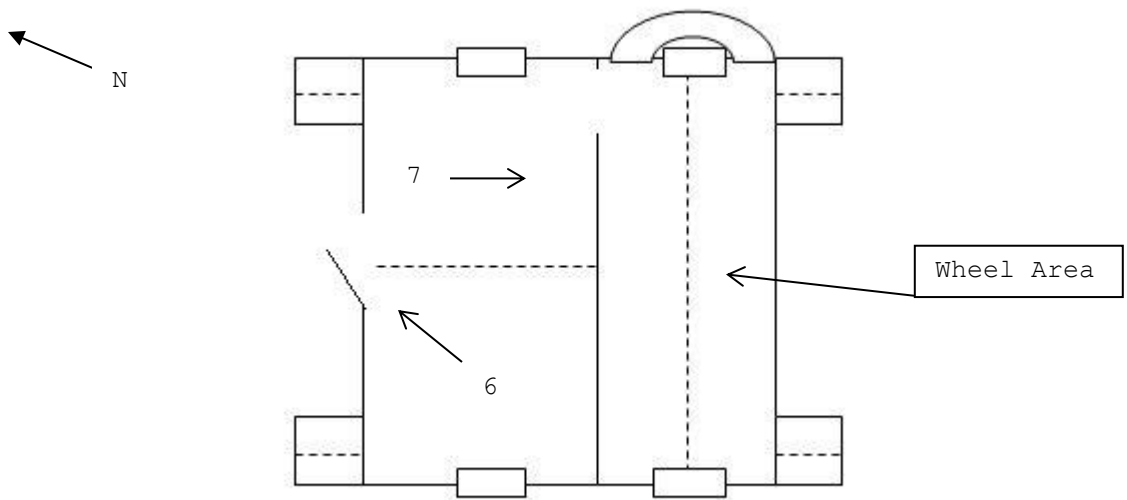
Westmoreland Water Wheel & Gatepost  
Name of Property

Knox County, Tennessee  
County and State

Company supplying the wheel and pump that was purchased from the Fitz Water Wheel Company of Hanover, Pennsylvania.<sup>1</sup>

**Wheelhouse (contributing)**

Designed and constructed in 1923 in the Tudor Revival Style, the Westmoreland Wheelhouse is divided into two sections and the entire exterior is clad in rough-faced, irregular-coursed East Tennessee marble. The taller section is on the east side of the building and houses an overshoot water wheel. This taller section contains tall, slim, arched openings to allow enough depth and width for the wheel to turn. These arched openings are located on the northwest and southeast elevations of the building. Attached to the taller northeast section of the structure on its southwest elevation is a shorter ell that mimics a gatepost, also with a steeply pitched gable roof covered with slate. This shorter gatepost section provides access to the water wheel's mechanical system. Two flat arched windows are located on the northwest and southeast elevations, while an arched entry with stone quoining and a plank door is located on the southwest façade. Flanking the arched entry door of the wheelhouse are short stone buttresses with gabled slate roofs. Located on the southeast wall, just to the west of the arched water wheel opening, is a bronze marker identifying the building, the architect and the original owner. The marker also notes the on-going maintenance performed by the Westmoreland Heights Garden Club which has assumed responsibility for the landscaping and seasonal decoration of the Wheelhouse and Gatepost.



**Floor Plan of the Wheelhouse (not to scale)**

<sup>1</sup> Giesler, M.J. (1962). *History Westmoreland Heights Entrance-Water Wheel*. Unpublished; Fitz Water Wheel Company. "Fitz Steel Overshoot Water Wheels". Hanover: PA, December, 1928. Reprinted 1987, 2001 by the Society for the Preservation of Old Mills, p. 42.



Westmoreland Water Wheel & Gatepost  
Name of Property

Knox County, Tennessee  
County and State

**Water Wheel (contributing)**

The water wheel itself is a sixteen foot by 1.25 foot, vertical Fitz Overshoot metal water wheel which was powered by a Myers pump.<sup>2</sup> At the time of construction, the wheel provided direct drive to the pump mechanism and did not use electricity. An electric pump was installed in 1929 when Knoxville Power and Light brought electricity to the site. The wheel is still powered by water but the turning shaft no longer powers a pump. The wheel has metal buckets, spokes, side panels, and axle. The wheel is housed in the tall section of the wheelhouse on the northeast side of the structure. The water supply for the wheel comes from a branch off of Fourth Creek, sometimes referred to as Coventry Creek, that winds its way through the adjacent subdivisions in the area. The pipe leading from the water collection box to the wheelhouse is an eight-inch pipe and is currently still in use. Four-inch pipes were run from a water tower throughout the neighborhood to supply all the houses.

**Gatepost (contributing)**

On the southwest right of way of Sherwood Drive, directly across from the wheelhouse, is the gatepost which together marks the entrance to Westmoreland Heights Subdivision. The gatepost was designed in 1925 in a Tudor Revival Style, two years after the wheelhouse, when the subdivision was established on Sherwood Drive. Similar in construction to the wheelhouse, it uses rough-faced, irregular-coursed East Tennessee marble in its construction. The gatepost was also designed by Charles I. Barber of the architectural firm of Barber and McMurry and complements the wheelhouse. A stone wall approximately three feet in height leads from the southwest towards Sherwood Drive, and intersects with a slate-covered, gable roof stone buttress, which in turn intersects with a taller (approximately six feet) rectangular structure which is topped by a slate-covered, gable roof and flanked by square stone buttresses that mimic the other buttresses.

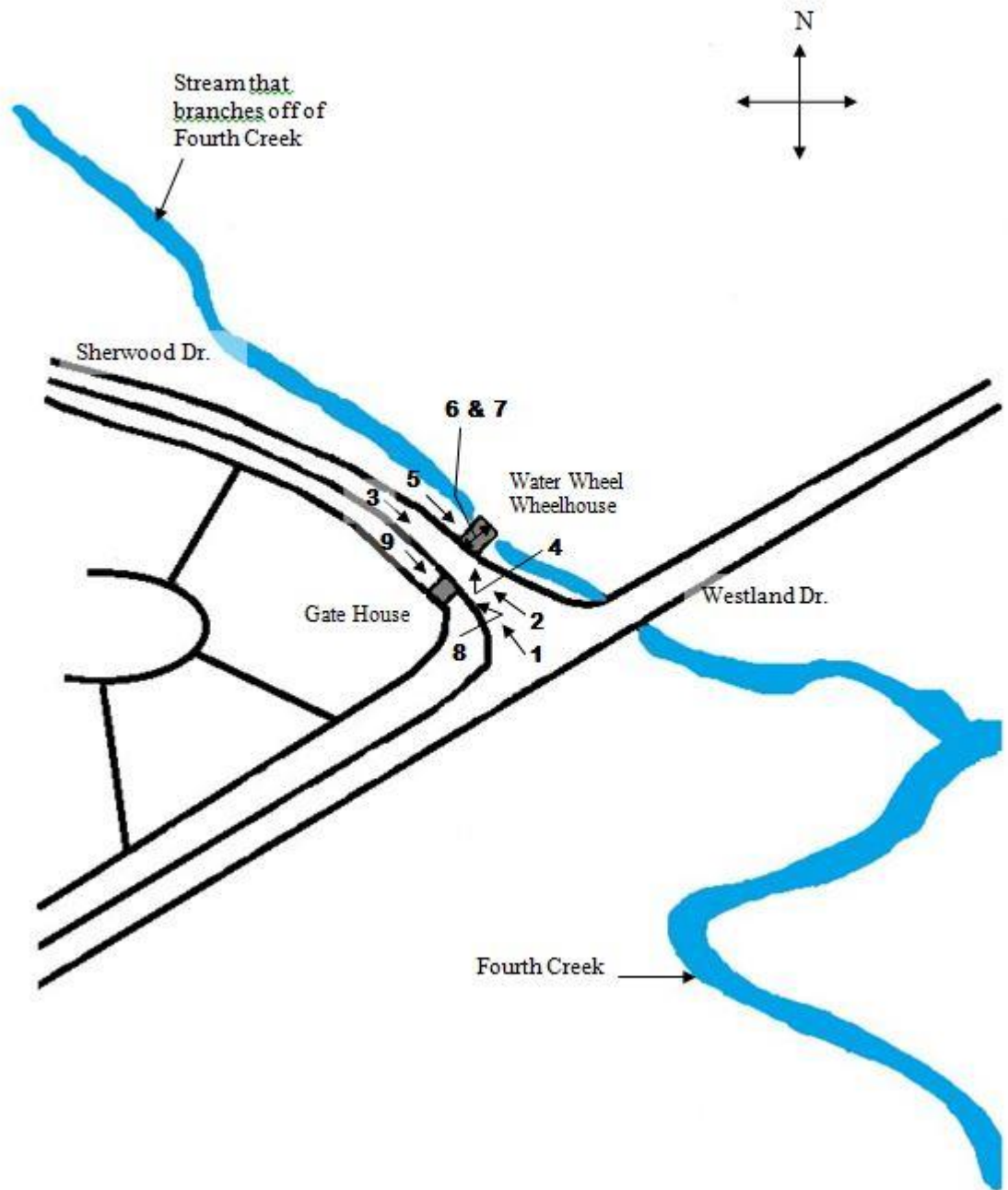
---

<sup>2</sup> Fitz Water Wheel Company. "Fitz Steel Overshoot Water Wheels", Bulletin No. 70, Hanover: PA, December, 1928. Reprinted 1987, 2001 by the Society for the Preservation of Old Mills, p. 42.

Westmoreland Water Wheel & Gatepost  
Name of Property

Knox County, Tennessee  
County and State

**Site Plan and Photo Key (not to scale)**



Westmoreland Water Wheel & Gatepost  
Name of Property

Knox County, Tennessee  
County and State

**8. Statement of Significance**

**Applicable National Register Criteria**  
(Mark "x" in one or more boxes for the criteria qualifying the property for National Register listing.)

- A Property is associated with events that have made a significant contribution to the broad patterns of our history.
- B Property is associated with the lives of persons significant in our past.
- C Property embodies the distinctive characteristics of a type, period, or method of construction or represents the work of a master, or possesses high artistic values, or represents a significant and distinguishable entity whose components lack individual distinction.
- D Property has yielded, or is likely to yield, information important in prehistory or history.

**Criteria Considerations N/A**  
(Mark "x" in all the boxes that apply.)

Property is:

- A Owned by a religious institution or used for religious purposes.
- B removed from its original location.
- C a birthplace or grave.
- D a cemetery.
- E a reconstructed building, object, or structure.
- F a commemorative property.
- G less than 50 years old or achieving significance within the past 50 years.

**Areas of Significance**  
(Enter categories from instructions.)

ENGINEERING  
ARCHITECTURE  
COMMUNITY PLANNING AND DEVELOPMENT

**Period of Significance**

1923-1940

**Significant Dates**

1923; 1925; 1929; 1940

**Significant Person**

(Complete only if Criterion B is marked above.)

N/A

**Cultural Affiliation**

N/A

**Architect/Builder**

BARBER, CHARLES I. , Architect  
CALLAWAY, R.A., Builder

Westmoreland Water Wheel & Gatepost  
Name of Property

Knox County, Tennessee  
County and State

**Statement of Significance Summary Paragraph**

The Westmoreland Water Wheel and Gatepost are being nominated to the National Register of Historic Places under Criterion C for their excellent representation of the Tudor Revival architectural style and under Criterion C for their contribution to the development of the Westmoreland Heights Subdivision as the source of water and electricity prior to city services. The Westmoreland Wheelhouse (built in 1923) and the Gatepost (built in 1925) were designed by noted local architect Charles I. Barber of the firm Barber and McMurry. Prominent local landscape architect, Charles F. Lester provided the landscape design for the structures. The Water Wheel is a steel overshot wheel purchased by Edward T. Manning, President of the Tennessee Mill & Mine Supply Company from the Fitz Water Wheel Company of Hanover, Pennsylvania and installed by R.A. Calloway, an employee with the Tennessee Mill & Mine Supply Company. The use of East Tennessee marble is the most notable exterior architectural feature of these structures; other architectural materials worth mentioning are wood, slate, and iron. The Westmoreland Water Wheel and Gatepost retain a high degree of architectural integrity and are an excellent example of the Tudor Revival style in Knox County and meet the requirements of the National Register of Historic Places. The Westmoreland Water Wheel and Gatepost also meet the registration requirements in the *Historic and Architectural Resources of Knoxville and Knox County, Tennessee* Multiple Property Listing under the historic context of Suburban Growth and Development in Knoxville, 1861-1940.

**Narrative Statement of Significance**

The Westmoreland Water Wheel and Gatepost are one of the most visible and publicly recognized landmarks in West Knoxville. The land on which they are located was first settled in 1809 by Captain William Lyon; ownership of much of the land continued with his descendants until 1923, when the water wheel was built to generate power for four dwellings in the area, two of which were owned by Lyons' descendants. One of those descendants was John James Craig III, who was head of the Candoro Marble Company (NRHP-listed, Candoro Marble Works 7/22/2005) and who had a close association with Charles I. Barber, a partner in the Barber and McMurry architectural firm, and who is credited with the design of the Wheelhouse and Gatepost Barber's use of East Tennessee marble in the construction of the wheelhouse and gatepost was probably influenced by his association with Craig III. Another of the four owners was Craig's sister, the wife of Jay Donaldson, who lived in a house across Westland Drive, originally built as a summer house for the Craig family.

The water wheel had its beginnings around 1920, when Judge and Mrs. Daniel Clary Webb purchased sixty acres of farm and woodlands north of Ebenezer Road (now Westland Drive).<sup>3</sup> Webb was a prominent Knoxville lawyer, as well as, the first Juvenile Court Judge in Knox County.<sup>4</sup> During 1920 the Webb family moved into a house (destroyed by fire in 1935) on the property and started arranging for the construction of a road from their home to Ebenezer Road (now Westland Drive).<sup>5</sup> During these early years, water for the Webb home was pumped from a small spring just east of the house that formed the headwaters of Coventry Creek.

<sup>3</sup> Giesler, M.J. (1962). *History Westmoreland Heights Entrance-Water Wheel*. Unpublished.1

<sup>4</sup> "Funeral set for today for D.C. Webb, Attorney." *The Knoxville Journal*, February 26, 1954, Obituaries.

<sup>5</sup> Giesler, M.J. (1962). *History Westmoreland Heights Entrance-Water Wheel*. Unpublished.1

Westmoreland Water Wheel & Gatepost  
Name of Property

Knox County, Tennessee  
County and State

In early 1923, Edward T. Manning purchased a lot from Judge Webb and constructed a one-story Craftsman Style house which still stands at 6407 Orchard Road.<sup>6</sup> Manning was one of the owners of the Tennessee Mill & Mine Supply Company and was concerned about the need for an adequate supply of water for the area homes. Manning was also aware of a larger spring located near the location of the present wheelhouse. Manning suggested using a water wheel to furnish electricity and water. Under his direction, Paul Kennedy of Sehorn and Kennedy, Engineers, surveyed the area in September 1923 to determine a location for a dam and a water wheel.<sup>7</sup> Edward Manning is credited with the idea of installing, financing, and overseeing the installation of the wheelhouse and waterwheel.<sup>8</sup>

After the location for the dam and waterwheel was selected, Knoxville architect Charles I. Barber was hired to design the wheelhouse that would house the wheel and pump.<sup>9</sup> The Tennessee Mill and Mining Supply Company purchased the Fitz steel overshoot[sic] water wheel and pump in 1923.<sup>10</sup> R.A. Calloway, an employee with the Tennessee Mill and Mining Supply Company, installed the wheel and pump and also did the stone work for the wheelhouse.<sup>11</sup> This work was started in the fall of 1923 and completed in early 1924.<sup>12</sup> Water was now provided to the Craig Home, Donaldson-Montgomery Home, the Manning Home, and the home of Judge Webb (which is no longer standing); its construction was part of the development proposal for an adjacent residential subdivision known as Westmoreland Heights.

The Westmoreland Heights Subdivision, located west and north of the water wheel, was developed by a 1923 corporation formed by Cecil Baker, John J. Craig, III, Jay Donaldson, Ernest Logan and Judge Daniel Clary Webb. Westmoreland Heights, Inc. purchased a tract of land in January 1923, located north of Ebenezer Road (now Westland Drive) and west of the now Sherwood Drive and Stone Mill Road intersection.<sup>13</sup> From January until March 1925, landscape architect, Charles Lester designed the roads; engineers, Sehorn & Kennedy, surveyed and plotted the roads and lots; and O.N. Davis built the roads.<sup>14</sup> Also during this time, with the entrance to the subdivision being located at the waterwheel, it was decided to build a gatepost of the same design across from the wheelhouse. The gatepost was designed by Charles I. Barber and built of the same materials as the wheelhouse in 1925.

Although the Westmoreland Water Wheel was one of the initial factors making the development of the subdivision feasible, it also carried within it the seeds that ended its role as a supplier, since its capacity was soon exceeded. On July 12, 1929, the residents of Westmoreland Heights signed an agreement with Knoxville Power and Light Company for the supply of electricity and an electric motor-driven pump was

---

<sup>6</sup> Ibid. 1-2.

<sup>7</sup> Ibid. 2.

<sup>8</sup> "E.T. Manning, Store Head, is dead at 80," *The Knoxville News-Sentinel*, July 15, 1937, Obituaries.

<sup>9</sup> Giesler, M.J. (1962). *History Westmoreland Heights Entrance-Water Wheel*. Unpublished.2

<sup>10</sup> Giesler, M.J. (1962). *History Westmoreland Heights Entrance-Water Wheel*. Unpublished.2; Fitz Water Wheel Company. "Fitz Steel Overshoot Water Wheels", Bulletin No. 70, Hanover: PA, December, 1928. Reprinted 1987, 2001 by the Society for the Preservation of Old Mills, p. 42.

<sup>11</sup> Ibid.2.

<sup>12</sup> Ibid. 2.

<sup>13</sup> Ibid. 2.

<sup>14</sup> Ibid. 2.

Westmoreland Water Wheel & Gatepost  
Name of Property

Knox County, Tennessee  
County and State

---

installed at the spring.<sup>15</sup> The water system supplied water for houses until December 1940 when the Knoxville Water Department extended its water main lines from Lyons View Pike.<sup>16</sup>

The Westmoreland Water Wheel is a significant pre-TVA hydroelectric service in Knoxville. The water and electric service it provided contributed to the development of the prominent Westmoreland Heights neighborhood. After Westmoreland Heights Subdivision contracted with Knoxville Power and Light Company to supply electric power to the water pump, the water wheel lost its original engineering purpose. However, it has retained its role as a distinguishing landmark for the Westmoreland Heights neighborhood. The heavily landscaped water wheel forms part of the distinctive gateway into the neighborhood which also includes the marble gatepost flanking the roadway designed by Barber and was constructed at the time the Westmoreland Heights Subdivision was developed.

Charles I. Barber's firm of Barber and McMurry provided the design for the wheelhouse and gatepost. The wheelhouse and gatepost draw significance from their association with Charles I. Barber, who along with Benjamin F. McMurry, founded the architectural firm of the Barber and McMurry. Barber and McMurry are noted for their work in residential, collegiate and ecclesiastical buildings, particularly in Sequoyah Hills and Lyons Bend. Barber was the son of prominent Victorian era architect, George F. Barber. He attended public school in Knoxville, graduating in 1908 and in 1909 attended the University of Pennsylvania where he received a certificate in architecture. He then toured and studied in Europe, and in 1911, returned to Knoxville, where he formed the Barber and McMurry firm in 1915.

Also notable is the work of the landscape architect who is associated with designing the grounds of the wheelhouse, gatepost and Sherwood Drive's intersection with Westland Drive, of which some is still evident today (*see Figures 1-4*). Charles F. Lester was a native of Maxwell, Iowa and was born in 1889. He studied landscape design at the University of Michigan and at the University of London; after serving in the armed forces in World War I, he worked with E. S. Draper of Charlotte, North Carolina. He came to Knoxville in 1921 where he worked until his death in 1953.

Part of the water wheel's significance is its innovative use of natural resources on the site to provide water and electricity to an area outside the boundaries of city services. Unlike the grist mills that dotted Knox County and were erected as commercial ventures, the Westmoreland Water Wheel was intended to serve residential purposes. As Knoxville expanded westward and the automobile came into common use, large farms were subdivided to provide plots for suburbanization. With a lack of city services such as water, however, the rate of expansion was retarded; areas that could provide some of the expected urban services were more desirable. The ingenuity of the Westmoreland Heights development team provided for the demands of new suburbanites incorporating modern urban comforts into this originally country setting. Without this apparatus, development of Westmoreland Heights as an early 20<sup>th</sup> century suburb would not have been as feasible while the Wheelhouse and Gatepost also provided an attractive, eye-catching entrance to the subdivision.

---

<sup>15</sup> Ibid. 3.

<sup>16</sup> Ibid. 3.



Westmoreland Water Wheel & Gatepost  
Name of Property

Knox County, Tennessee  
County and State

---

The Westmoreland Wheelhouse and Gatepost highlights the significance of the design of Charles I. Barber and his unique use of East Tennessee marble in its construction along with its function for supplying water to a residential subdivision. The water wheel is well known to many Knoxvilleans, although its history is not always recognized. Its role in encouraging suburban development and attempting to provide urban services in a remote location are relatively unknown. Together, this grouping of structures is a significant statement about Knoxville's early twentieth century history and development.

Westmoreland Water Wheel & Gatepost  
Name of Property

Knox County, Tennessee  
County and State

---

---

## **9. Major Bibliographic References**

---

### **Bibliography**

Cary, Bart, *Conclusions and Research regarding the Westmoreland Water Wheel at Sherwood Drive and Westland Drive*. Unpublished. 2013. Located in the Westmoreland Heights Neighborhood File in the Newspaper Vertical Files of the Calvin M. McClung Historical Collection at the Knoxville County Public Library.

“Charles F. Lester, Designer of Landmark Grounds, Dies.” *The Knoxville News-Sentinel*, November 23, 1953, Obituaries.

“Death Takes C.F. Lester Suddenly.” *The Knoxville Journal*, November 23, 1953, Obituaries.

“E.T. Manning dies at 80,” *The Knoxville Journal*, July 15, 1937, Obituaries.

“E.T. Manning, Store Head, is dead at 80”. *The Knoxville News-Sentinel*, July 15, 1937, Obituaries.

Fitz Water Wheel Company. “Fitz Steel Overshoot Water Wheels”. Bulletin No. 70. Hanover, PA, December, 1928. Reprinted 1987, 2001 by the Society for the Preservation of Old Mills.

“Funeral set for today for D.C. Webb, Attorney.” *The Knoxville Journal*, February 26, 1954, Obituaries.

Giesler, M.J, *History Westmoreland Heights Entrance-Water Wheel*. Unpublished. 1962.

“Graveside Rites Scheduled for Paul Kennedy,” *The Knoxville Journal*, December 5, 1967, Obituaries.

Jones, James B. “Pre-TVA Hydroelectric Development in Tennessee, 1901-1933”, National Register of Historic Places Multiple Property Nomination. 1989.

“Westmoreland Heights’ Water System, Only One of the kind, Observes its Twelfth Anniversary,” *The Knoxville News-Sentinel*, March 1, 1936.

Westmoreland Water Wheel & Gatepost  
 Name of Property

Knox County, Tennessee  
 County and State

<b>Previous documentation on file (NPS):</b>		<b>Primary location of additional data:</b>	
<input type="checkbox"/>	preliminary determination of individual listing (36 CFR 67 has been requested)	<input checked="" type="checkbox"/>	State Historic Preservation Office
<input type="checkbox"/>	previously listed in the National Register	<input type="checkbox"/>	Other State agency
<input type="checkbox"/>	previously determined eligible by the National Register	<input type="checkbox"/>	Federal agency
<input type="checkbox"/>	designated a National Historic Landmark	<input type="checkbox"/>	Local government
<input type="checkbox"/>	recorded by Historic American Buildings Survey #	<input type="checkbox"/>	University
<input type="checkbox"/>	recorded by Historic American Engineering Record #	<input checked="" type="checkbox"/>	Other
<input type="checkbox"/>	recorded by Historic American Landscape Survey #	Name of repository: Knox Heritage	
Historic Resources Survey Number (if assigned):			

Westmoreland Water Wheel & Gatepost  
Name of Property

Knox County, Tennessee  
County and State

---

**10. Geographical Data**

---

**Acreage of Property** .2 acres **USGS Quadrangle** Knoxville 147 NW

**Latitude/Longitude Coordinates**

Datum if other than WGS84:  
(enter coordinates to 6 decimal places)

- |                        |                       |            |
|------------------------|-----------------------|------------|
| 1. Latitude: 35.922119 | Longitude: -83.999219 | Wheelhouse |
| 2. Latitude: 35.922011 | Longitude: -83.999303 | Gatepost   |

**Verbal Boundary Description**

Beginning at a point on the southwest side of the right-of-way of Sherwood Drive, then approximately 80-feet northwest to the eastern right-of-way of Sherwood Drive, then approximately 192-feet to the northwest right-of-way of Westland Drive at its intersection with Sherwood Drive, then west and southwest across Sherwood Drive approximately 325-feet to the northwest intersection of the Sherwood Drive and Westland Drive right-of-way, then northwest along the northwest side of the right-of-way of Sherwood Drive approximately 40-feet to the point of beginning, being approximately .2 acres contained within City of Knoxville-owned right-of-way.

**Boundary Justification**

The boundaries included in this nomination encompass the structures, landscaping and physical area that are the subject of the nomination.

Westmoreland Water Wheel & Gatepost  
Name of Property

Knox County, Tennessee  
County and State



**Property Tax Map – Westmoreland Wheelhouse and Gatepost  
Located within the City of Knoxville intersection right-of-way.**



Westmoreland Water Wheel & Gatepost  
Name of Property

Knox County, Tennessee  
County and State



**Knoxville USGS Quadrangle Map**  
**Location of the Westmoreland Water Wheel and Gatepost circled in black.**  
**(scale is 1:24000)**



Westmoreland Water Wheel & Gatepost  
Name of Property

Knox County, Tennessee  
County and State

---

**11. Form Prepared By**

---

Name Ann K. Bennett & Hollie Beth Cook & Peggy Nickell (TN Historical Commission)

Organization Knox Heritage, Inc.

Street & Number P. O. Box 1242 Date June 3, 2013

City or Town Knoxville Telephone 865/523-8008

E-mail hcook@knoxheritage.org State TN Zip Code 37901

**Additional Documentation**

Submit the following items with the completed form:

- **Maps:** A **USGS map** or equivalent (7.5 or 15 minute series) indicating the property's location.
- **Sketch map** for historic districts and properties having large acreage or numerous resources. Key all photographs to map.
- **Photographs** (refer to Tennessee Historical Commission National Register *Photo Policy* for submittal of digital images and prints)
- **Additional items:** (additional supporting documentation including historic photographs, historic maps, etc. should be included on a Continuation Sheet following the photographic log and sketch maps)

**Paperwork Reduction Act Statement:** This information is being collected for applications to the National Register of Historic Places to nominate properties for listing or determine eligibility for listing, to list properties, and to amend existing listings. Response to this request is required to obtain a benefit in accordance with the National Historic Preservation Act, as amended (16 U.S.C.460 et seq.).

**Estimated Burden Statement:** Public reporting burden for this form is estimated to average 100 hours per response including time for reviewing instructions, gathering and maintaining data, and completing and reviewing the form. Direct comments regarding this burden estimate or any aspect of this form to the Office of Planning and Performance Management, U.S. Dept. of the Interior, 1849 C. Street, NW, Washington, DC.

Westmoreland Water Wheel & Gatepost  
Name of Property

Knox County, Tennessee  
County and State

---

**Photo Log**

Name of Property: Westmoreland Water Wheel and Gatepost  
City or Vicinity: Knoxville  
County: Knox State: Tennessee  
Photographer: Hollie Beth Cook  
Date Photographed: June 4, 2013

- 1 of 9. Overall view. Photographer facing northwest.
- 2 of 9. Overall view. Photographer facing northwest.
- 3 of 9. Overall view. Photographer facing southeast.
- 4 of 9. West and southwest elevations, Water Wheelhouse. Photographer facing northeast.
- 5 of 9. Northwest elevation of Water Wheelhouse. Photographer facing southeast.
- 6 of 9. Interior of the Water Wheelhouse. Photographer facing west.
- 7 of 9. Interior of the Water Wheelhouse. Photographer facing northeast.
- 8 of 9. Gatepost. Photographer facing northwest.
- 9 of 9. Gatepost. Photographer facing southeast.

Westmoreland Water Wheel & Gatepost  
Name of Property

Knox County, Tennessee  
County and State

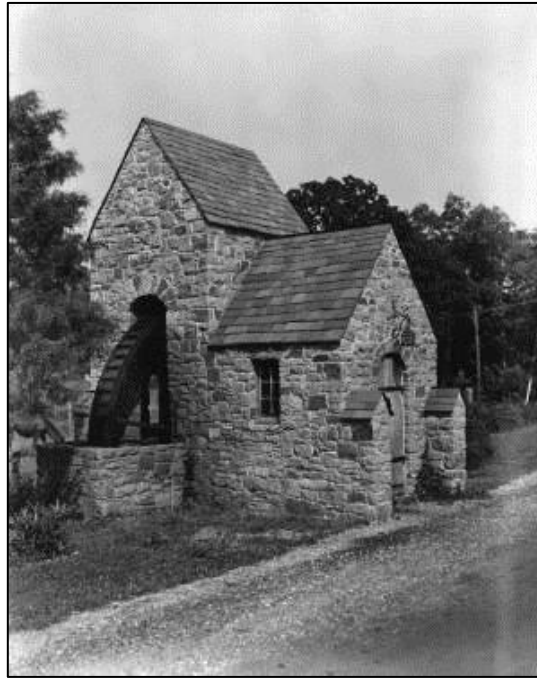


Figure 1: Westmoreland Water Wheel and Wheelhouse ca. 1925.  
*Photo courtesy of Knox County Public Library: Calvin M. McClung Historical Digital Collection-Thompson Photographic Collection.*



Figure 2: Westmoreland Water Wheel, Wheelhouse, and Gatepost ca. 1925  
*Photo courtesy of Knox County Public Library: Calvin M. McClung Historical Digital Collection-Thompson Photographic Collection.*

Westmoreland Water Wheel & Gatepost  
Name of Property

Knox County, Tennessee  
County and State



Figure 3: Wheelhouse, Water Wheel and Gatepost ca. 1925.  
*Photo courtesy of Knox County Public Library: Calvin M. McClung Historical Digital Collection-Thompson Photographic Collection.*



Figure 4: Wheelhouse and Wheel. Date unknown.  
*Photo courtesy of Knox County Public Library: Calvin M. McClung Historical Digital Collection-Thompson Photographic Collection.*

Westmoreland Water Wheel & Gatepost  
Name of Property

Knox County, Tennessee  
County and State



Figure 5: Wheelhouse, Water Wheel and Gatepost ca. 1923 at construction.  
*Photo courtesy of Knox County Public Library: Calvin M. McClung Historical Digital Collection-Thompson Photographic Collection.*

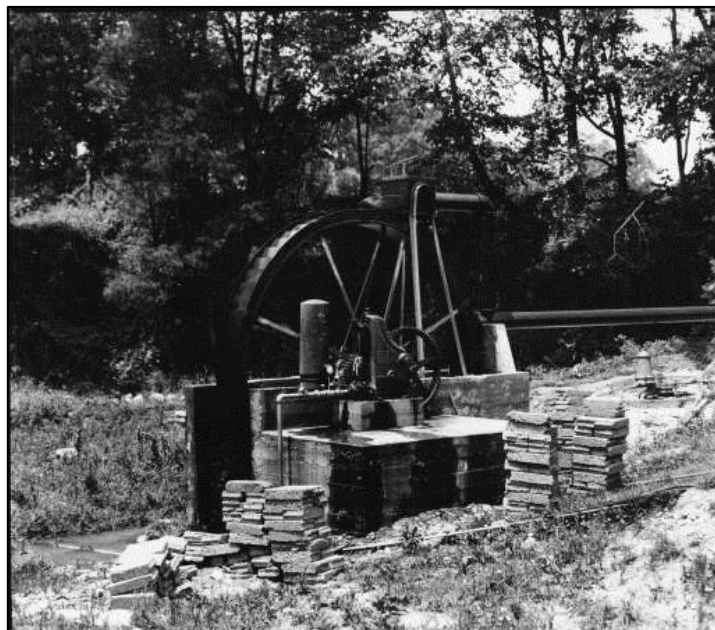
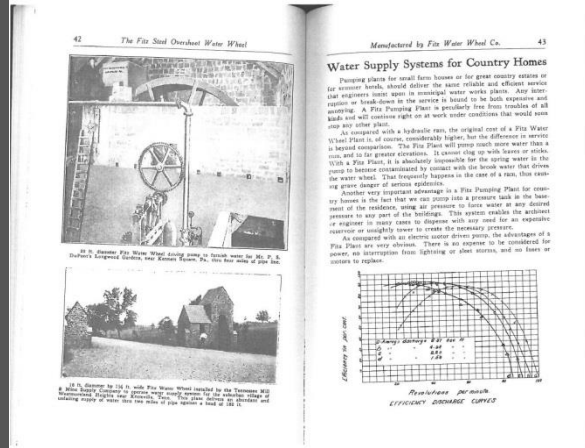
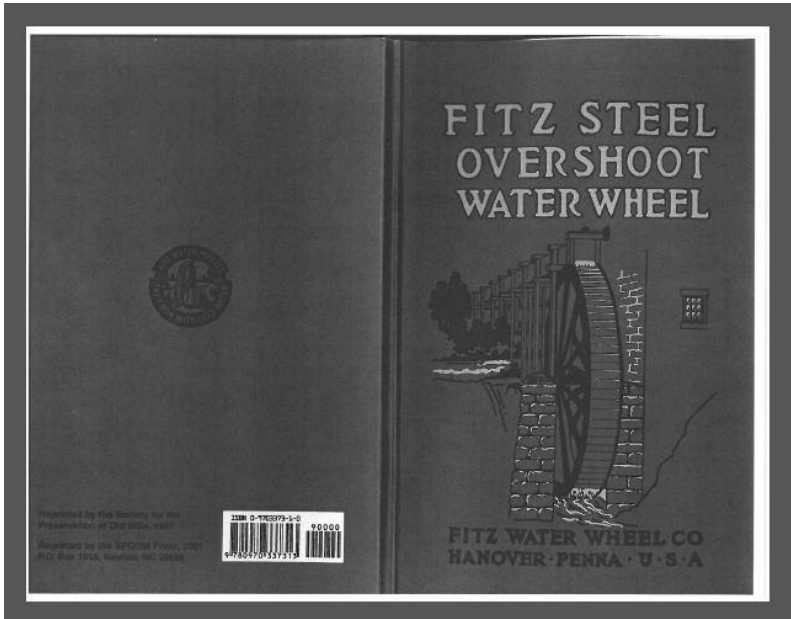


Figure 6: Wheelhouse, Water Wheel and Gatepost ca. 1923 at construction.  
*Photo courtesy of Knox County Public Library: Calvin M. McClung Historical Digital Collection-Thompson Photographic Collection.*

Westmoreland Water Wheel & Gatepost  
 Name of Property

Knox County, Tennessee  
 County and State



16 ft. diameter by 1 1/4 ft. wide Fitz Water Wheel installed by the Tennessee Mill & Mine Supply Company to operate water supply system for the suburban village of Westmoreland Heights near Knoxville, Tenn. This plant delivers an abundant and unfailling supply of water thru two miles of pipe against a head of 180 ft.

Figure 7: Advertisement of the Fitz Water Wheel Company located in Hanover, Pennsylvania in the Fitz Steel Overshoot Water Wheel Promotional Pamphlet showing the Westmoreland Water Wheel and Gatepost on page 40. The pamphlet is dated 1928 (reprints, 1987, 2001). (Pamphlet courtesy of Lou Mogavero)









25





















ROBIN HOOD

ROBIN HOOD











UNITED STATES DEPARTMENT OF THE INTERIOR  
NATIONAL PARK SERVICE

NATIONAL REGISTER OF HISTORIC PLACES  
EVALUATION/RETURN SHEET

REQUESTED ACTION: NOMINATION

PROPERTY NAME: Westmoreland Water Wheel and Gatepost

MULTIPLE NAME: *Knoxville and Knox County MPS*

STATE & COUNTY: TENNESSEE, Knox

DATE RECEIVED: 11/01/13      DATE OF PENDING LIST: 11/25/13  
DATE OF 16TH DAY: 12/10/13      DATE OF 45TH DAY: 12/18/13  
DATE OF WEEKLY LIST:

REFERENCE NUMBER: 13000949

REASONS FOR REVIEW:

APPEAL: N    DATA PROBLEM: N    LANDSCAPE: N    LESS THAN 50 YEARS: N  
OTHER: N    PDIL: N    PERIOD: N    PROGRAM UNAPPROVED: N  
REQUEST: N    SAMPLE: N    SLR DRAFT: N    NATIONAL: N

COMMENT WAIVER: N

ACCEPT     RETURN     REJECT    12-18-13 DATE

ABSTRACT/SUMMARY COMMENTS:

Entered in  
The National Register  
of  
Historic Places

RECOM./CRITERIA \_\_\_\_\_

REVIEWER \_\_\_\_\_ DISCIPLINE \_\_\_\_\_

TELEPHONE \_\_\_\_\_ DATE \_\_\_\_\_

DOCUMENTATION see attached comments Y/N see attached SLR Y/N

If a nomination is returned to the nominating authority, the nomination is no longer under consideration by the NPS.

CERTIFIED LOCAL GOVERNMENT NATIONAL REGISTER REVIEW

CLG: Knoxville  
PROPERTY: Westmoreland Water Wheel and Gatepost  
ADDRESS: Intersection of Sherwood Drive and Westland Avenue, Knoxville,  
Knox County, Tennessee 37996

HISTORIC PRESERVATION COMMISSION EVALUATION

NAME OF COMMISSION: KNOXVILLE HISTORIC ZONING COMMISSION  
DATE OF MEETING: 9.19.23  
HOW WAS THE PUBLIC NOTIFIED OF THE MEETING? KNOX NEWS & SENTINEL - 12 DAYS AHEAD  
 ELIGIBLE FOR THE NATIONAL REGISTER KNOX MPC WEBSITE  
 NOT ELIGIBLE FOR THE NATIONAL REGISTER

REASONS FOR ELIGIBILITY OR NON-ELIGIBILITY:

CRITERION C - WORK OF NOTED LOCAL ARCHITECT CHARLES I. BARBER AND LANDSCAPE ARCHITECT CHARLES F. LESTER AS EXAMPLES OF THE USE OF TENNESSEE MARBLE ASSOCIATED WITH THIS ERA OF CONSTRUCTION AND THE TUDOR REVIVAL STYLE IN KNOXVILLE AND KNOX COUNTY.

SIGNATURE: *Kay Graybeal*  
TITLE: Kay Graybeal, Certified Local Government

DATE: 9.19.2013

THC STAFF EVALUATION

ELIGIBLE FOR THE NATIONAL REGISTER  
 NOT ELIGIBLE FOR THE NATIONAL REGISTER

REASONS FOR ELIGIBILITY OR NON-ELIGIBILITY:

The Westmoreland Water Wheel and Gatehouse are significant locally under Criterion C as the work of noted local architect Charles I. Barber and landscape architect, Charles F. Lester and as examples of the use of East Tennessee marble associated with this era of construction and the Tudor Revival style in Knoxville and Knox County. The water wheel is well known to many Knoxvilleians, although its history is not always recognized, and its role in encouraging suburban development and attempting to provide urban services in a remote location are relatively unknown. Together, this grouping of structures is a significant statement about Knoxville's early twentieth century history and development.

SIGNATURE: *Peggy Nickell*  
TITLE: Historic Preservation Specialist-National Register Coordinator DATE: July 26, 2013

PLEASE COMPLETE THIS FORM AND RETURN BEFORE: September 23, 2013

RETURN FORM TO:

PEGGY NICKELL  
TENNESSEE HISTORICAL COMMISSION  
2941 LEBANON ROAD  
NASHVILLE, TENNESSEE 37243-0442

**CERTIFIED LOCAL GOVERNMENT NATIONAL REGISTER REVIEW**

CLG: Knoxville  
PROPERTY: Westmoreland Water Wheel and Gatepost  
ADDRESS: Intersection of Sherwood Drive and Westland Avenue, Knoxville,  
Knox County, Tennessee 37996

**CHIEF ELECTED OFFICIAL EVALUATION**

NAME OF OFFICIAL:

TITLE:

- ELIGIBLE FOR THE NATIONAL REGISTER  
 NOT ELIGIBLE FOR THE NATIONAL REGISTER

REASONS FOR ELIGIBILITY OR NON-ELIGIBILITY:

SIGNATURE:



TITLE: Madeline Rogero, Mayor, City of Knoxville

DATE:

8/7/13

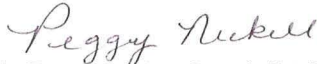
**THC STAFF EVALUATION**

- ELIGIBLE FOR THE NATIONAL REGISTER  
 NOT ELIGIBLE FOR THE NATIONAL REGISTER

REASONS FOR ELIGIBILITY OR NON-ELIGIBILITY:

The Westmoreland Water Wheel and Gatehouse are significant locally under Criterion C as the work of noted local architect Charles I. Barber and landscape architect, Charles F. Lester and as examples of the use of East Tennessee marble associated with this era of construction and the Tudor Revival style in Knoxville and Knox County. The water wheel is well known to many Knoxvilleians, although its history is not always recognized, and its role in encouraging suburban development and attempting to provide urban services in a remote location are relatively unknown. Together, this grouping of structures is a significant statement about Knoxville's early twentieth century history and development.

SIGNATURE:



TITLE: Historic Preservation Specialist-National Register Coordinator

DATE: July 26, 2013

**PLEASE COMPLETE THIS FORM AND RETURN BEFORE: September 23, 2013**

RETURN FORM TO:

PEGGY NICKELL  
TENNESSEE HISTORICAL COMMISSION  
2941 LEBANON ROAD  
NASHVILLE, TENNESSEE 37243-0442



**TENNESSEE HISTORICAL COMMISSION**  
STATE HISTORIC PRESERVATION OFFICE  
2941 LEBANON ROAD  
NASHVILLE, TENNESSEE 37243-0442  
OFFICE: (615) 532-1550  
E-mail: [Claudette.Stager@tn.gov](mailto:Claudette.Stager@tn.gov)  
(615) 532-1550, ext. 105  
[www.tnhistoricalcommission.org](http://www.tnhistoricalcommission.org)



October 21, 2013

Carol Shull  
Keeper of the National Register  
National Park Service  
National Register Branch  
1201 Eye Street NW  
8<sup>th</sup> floor  
Washington, DC 20005

Dear Ms. Shull:

Enclosed please find the documentation to nominate the *Westmoreland Water Wheel and Gatepost* to the National Register of Historic Places.

If you have any questions or if more information is needed, contact Peggy Nickell at 615/532-1550, extension 128 or [Peggy.Nickell@tn.gov](mailto:Peggy.Nickell@tn.gov).

Sincerely,

A handwritten signature in cursive script, appearing to read "Claudette Stager".

Claudette Stager  
Deputy State Historic Preservation Officer

CS:pn

Enclosures(4)