



1. Plinlimmon
2. Baltimore County, Maryland
3. Kate Simkins
4. March 18, 1982
5. Maryland Historical Trust, Annapolis, Md.
6. west elevation of house
7. 1/21

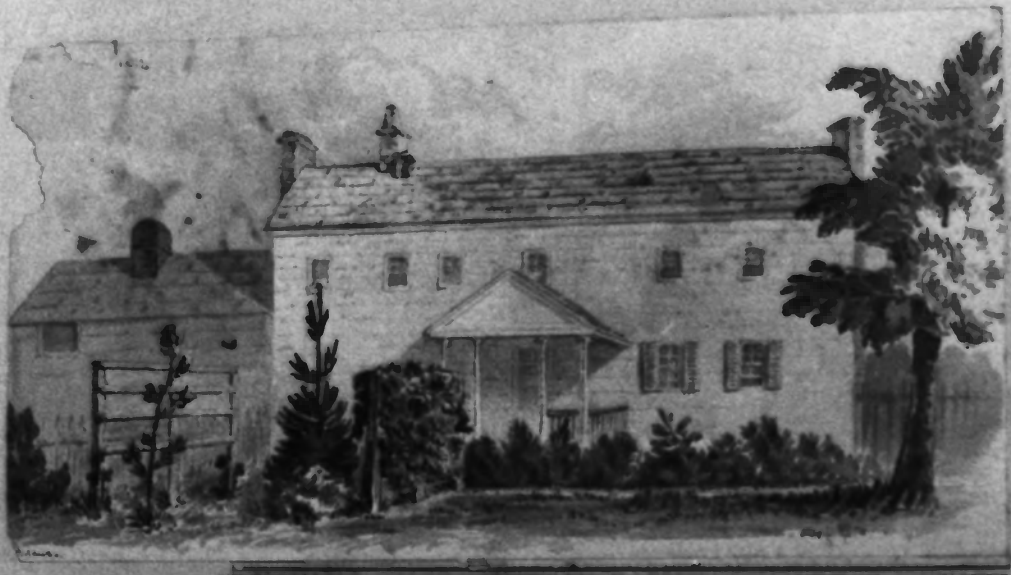


22

1. Plinlimmon
2. Baltimore County, Maryland
3. Kate Simkins
4. March 18, 1982
5. Maryland Historical Trust, Annapolis, Md.
6. west elevation of house (entrance door)
7. 2/21



1. Plinlimmon
2. Baltimore County, Maryland
3. Kate Simkins
4. March 18, 1982
5. Maryland Historical Trust, Annapolis, Md.
6. east elevation of house
7. 3/21



1839

Christopher Austin junior

Plattemou

1. Plinlimmon
2. Baltimore County, Maryland
3. John Simkins
4. October 23, 1982
5. Maryland Historical Trust, Annapolis, Md.
6. east elevation of house (1839 drawing)
7. 4 / 21



1. Plinlimmon
2. Baltimore County, Maryland
3. Kate Simkins
4. March 18, 1982
5. Maryland Historical Trust, Annapolis, Md.
6. North elevation of house
7. 5/21



1. Plinlimmon
2. Baltimore County, Maryland
3. Kate Simkins
4. March 18, 1982
5. Maryland Historical Trust,
6. South elevation of house
7. 6/21



1. Plinlimmon
2. Baltimore County, Maryland
3. John Simkins
4. October 23, 1982
5. Maryland Historical Trust, Annapolis, Md.
6. West and South elevations of house and west elevation of tenant house and garage
7. 7/21



1. Plinlimmon
2. Baltimore County, Maryland
3. John Simkins
4. October 23, 1982
5. Maryland Historical Trust, Annapolis, Md.
6. West elevation of tenant house, garage and smoke house
7. 8/21



1. Plinlimmon
2. Baltimore County, Maryland
3. Kate Simkins
4. March 18, 1982⁹
5. Maryland Historical Trust, Annapolis, Md.
6. South and east elevations of smokehouse, garage
and south elevation of tenant house
7. 9/21



1. Plinlimmon
2. Baltimore County, Maryland
3. John Simkins
4. October 9, 1982
5. Maryland Historical Trust, Annapolis, Md.
6. north and west elevations of tenant house
7. 10/21



1. Plinlimmon
2. Baltimore County, Maryland
3. Kate Simkins
4. March 18, 1982 *g*
5. Maryland Historical Trust, Annapolis, Md.
6. north elevation of tenant house
7. 11/21



1. Plinlimmon
2. Baltimore County, Maryland
3. John Simkins
4. October 9, 1982
5. Maryland Historical Trust, Annapolis, Md.
6. North and east elevations of cornhouse and barn
7. 12/21



1. Plinlimmon
2. Baltimore County, Maryland
3. Kate Simkin's
4. June 7, 1982
5. Maryland Historical Trust, Annapolis, Md.
6. North elevation of cornhouse
7. 13/21



1. Plinlimmon
2. Baltimore County, Maryland
3. Kate Simkins
4. June 7, 1982
5. Maryland Historical Trust, Annapolis, Md.
6. North and east elevations of barn
7. 14/21



1. Plinlimmon.
2. Baltimore County, Maryland
3. John Sinkins
4. October 23, 1982
5. Maryland Historical Trust, Annapolis, Md.
6. Entrance Hall
7. 15/21



1. Plinlimmon
2. Baltimore County, Maryland
3. John Simkins
4. October 23, 1982
5. Maryland Historical Trust, Annapolis, Md.
6. Entrance Hall staircase closet door
7. 16/21



1. Plinlimmon
2. Baltimore County, Maryland
3. John Sinkins
4. October 23, 1982
5. Maryland Historical Trust, Annapolis, Md.
6. Dining Room south wall (door to kitchen)
7. 17/21



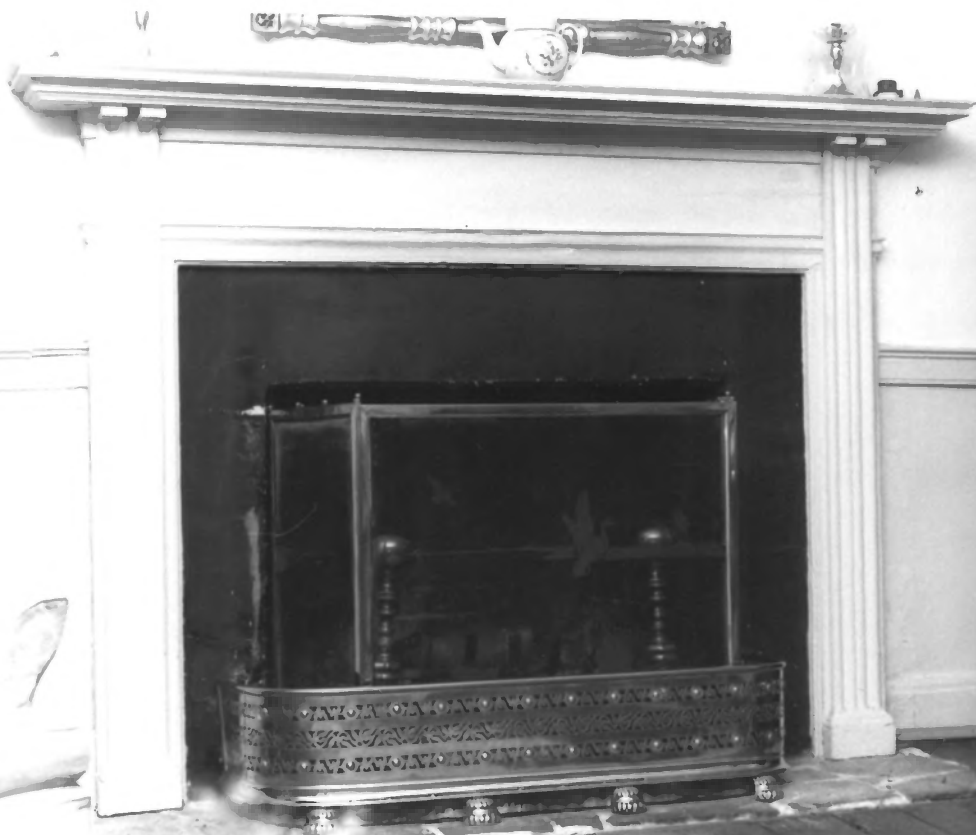
1. Plinlimon
2. Baltimore County, Maryland
3. John Simkins
4. October 23, 1982
5. Maryland Historical Trust, Annapolis, Md
6. Dining Room south wall (mantel and china cupboard)
7. 18/21



1. Plinlimmon
2. Baltimore County, Maryland
3. John Simkins
4. October 23, 1982
5. Maryland Historical Trust, Annapolis, Md.
6. Dining Room mantel
7. 19/21



1. Plinlimmon
2. Baltimore County, Maryland
3. John Simkins
4. October 23, 1982
5. Maryland Historical Trust, Annapolis, Md.
6. Living Room, north and west walls
7. 20/21



1. Plin limmon
2. Baltimore County, Maryland
3. John Simkins
4. October 23, 1982
5. Maryland Historical Trust, Annapolis, Md.
6. Living Room mantel
7. 21/21