

Figure 7-1



Figure 7.2
George Washington's Childhood Home Site
Stafford County, Virginia
Aerial View of the Central Part of Ferry Farm from the East
George Washington's Ferry Farm, 1997



Figure 7.3
George Washington's Childhood Home Site
Stafford County, Virginia
Location of the Strother-Washington House site
Photographer, Jack D. Warren, 1998

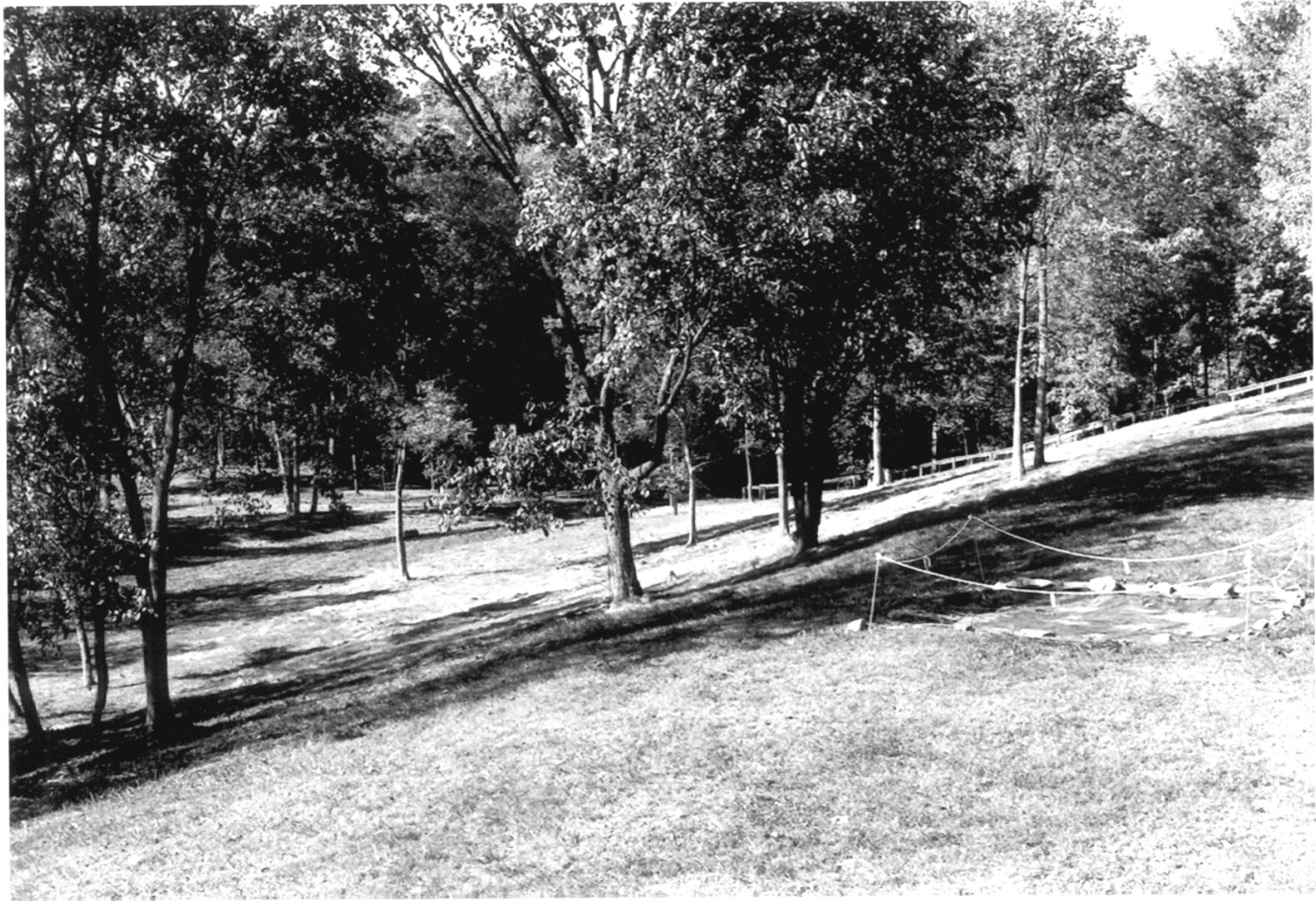


Figure 7-3

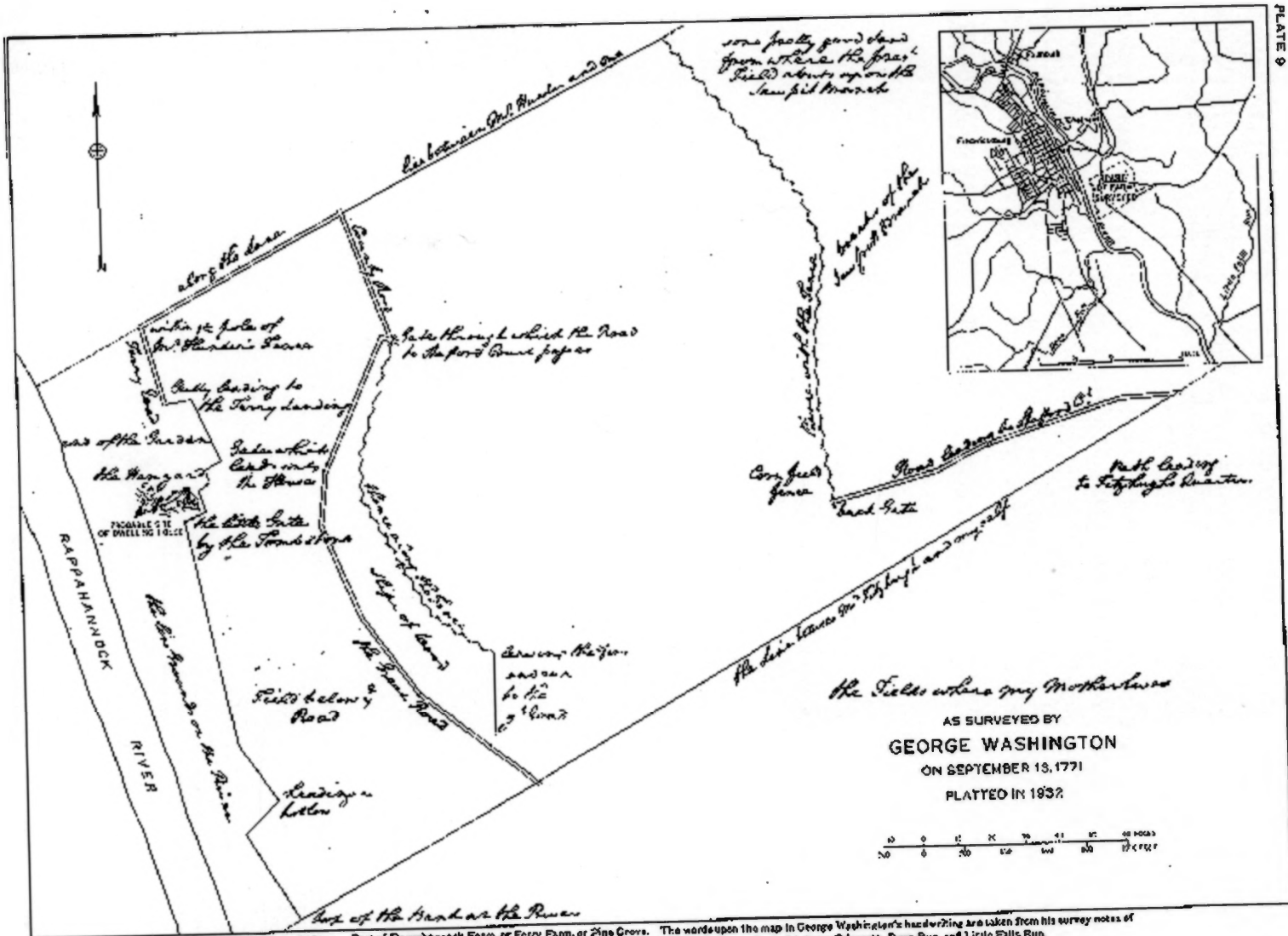


Figure 7-4



Figure 7.4
George Washington's Childhood Home Site
Stafford County, Virginia
John Gadsby Chapman, "Fredericksburg from the Old Mansion
of the Washington Family," c. 1833.
Photograph courtesy the Homewood Foundation, New York, NY, 1998



Figure 7.5
George Washington's Childhood Home Site
Stafford County, Virginia
Ferry Farm from the east during May 1864.
Photograph courtesy the National Archives, Washington, D.C.

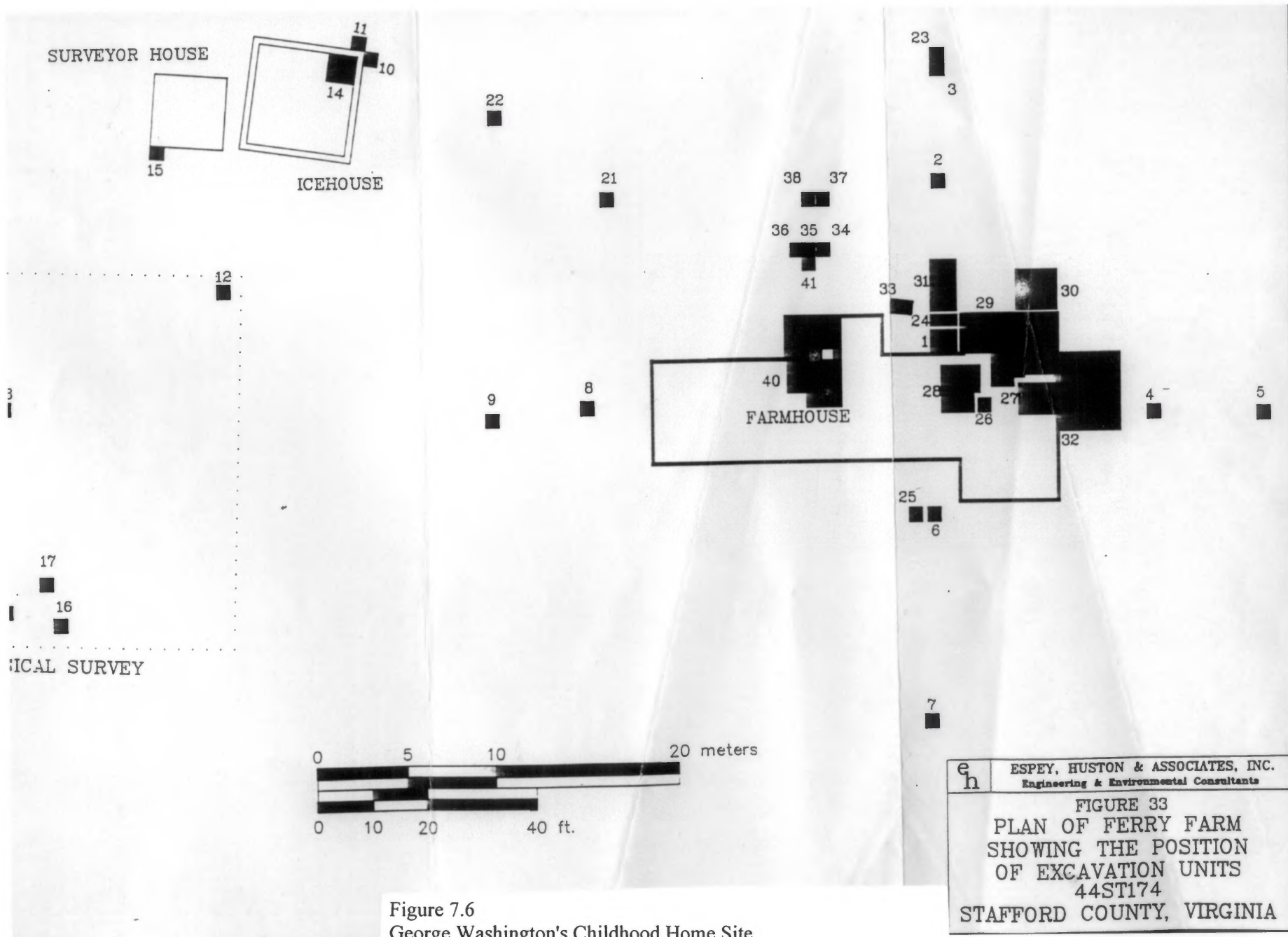


Figure 7.6
George Washington's Childhood Home Site
Stafford County, Virginia
Plan of Units Excavated by Espy, Huston & Associates, 1990-1992
George Washington's Ferry Farm, 1998

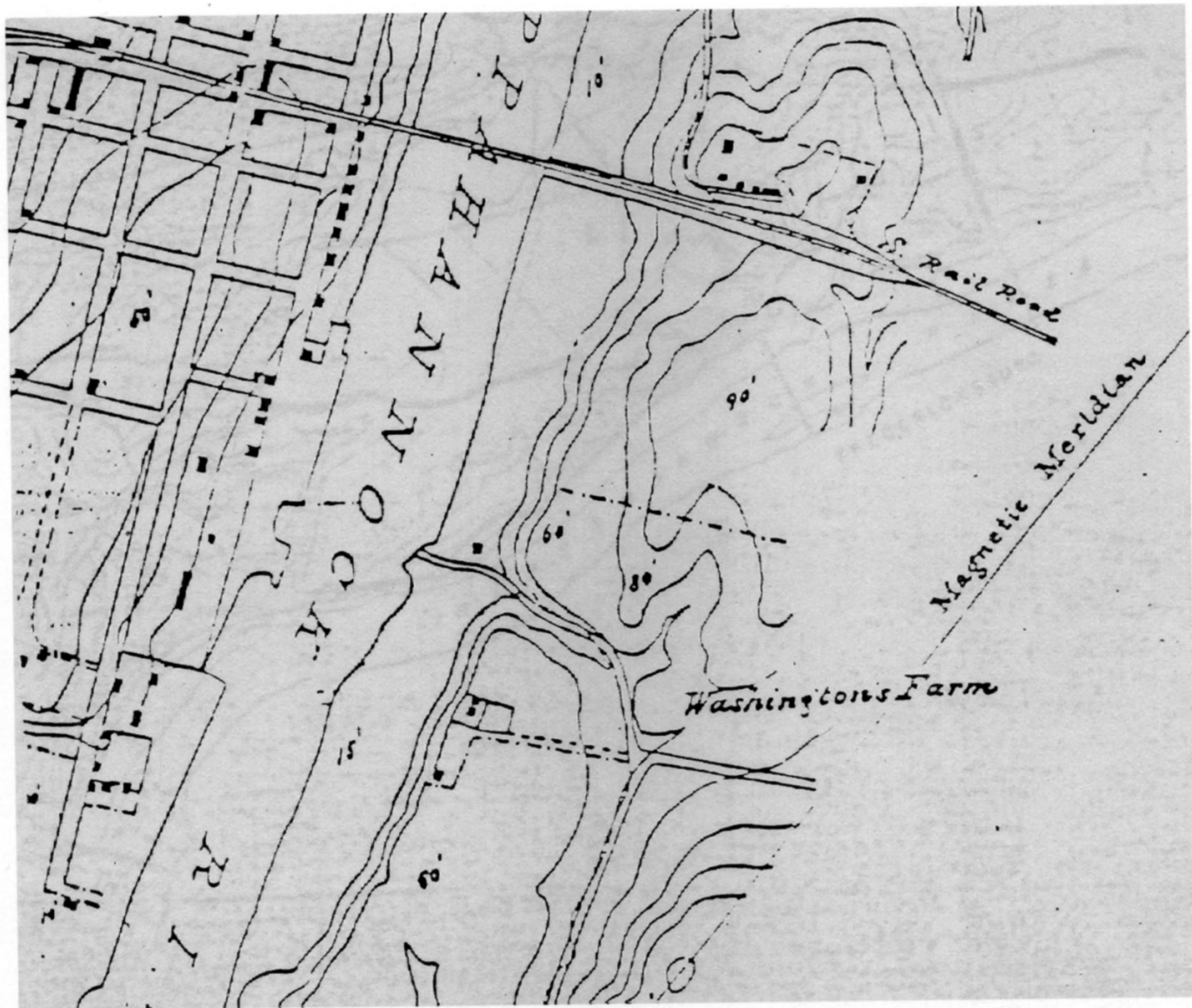
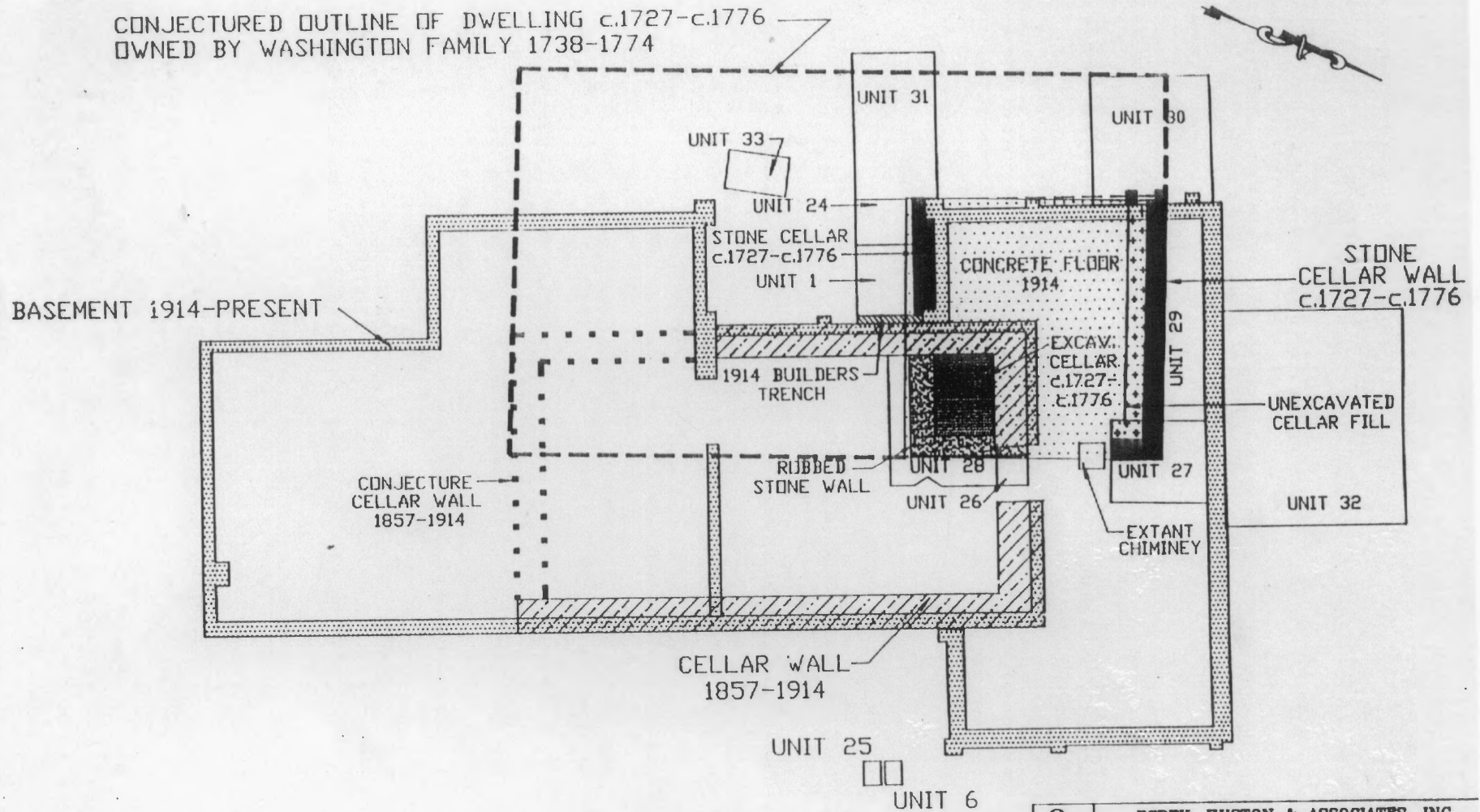


Figure 7-6



SCALE: 1"=10'

Figure 7.7
 George Washington's Childhood Home Site
 Stafford County, Virginia
 Excavation Units in the Area of the Strother-Washington Cellar
 Photographer, George Washington's Ferry Farm, 1993

	ESPEY, HUSTON & ASSOCIATES, INC. Engineering & Environmental Consultants
	FIGURE 35 EXCAVATION UNITS IN EXTANT HOUSE VICINITY FERRY FARM Stafford County, Virginia



Figure 7.8
George Washington's Childhood Home Site
Stafford County, Virginia
Excavation of an 18th-Century Domestic Structure from the West
Photographer, Jack D. Warren, 1998

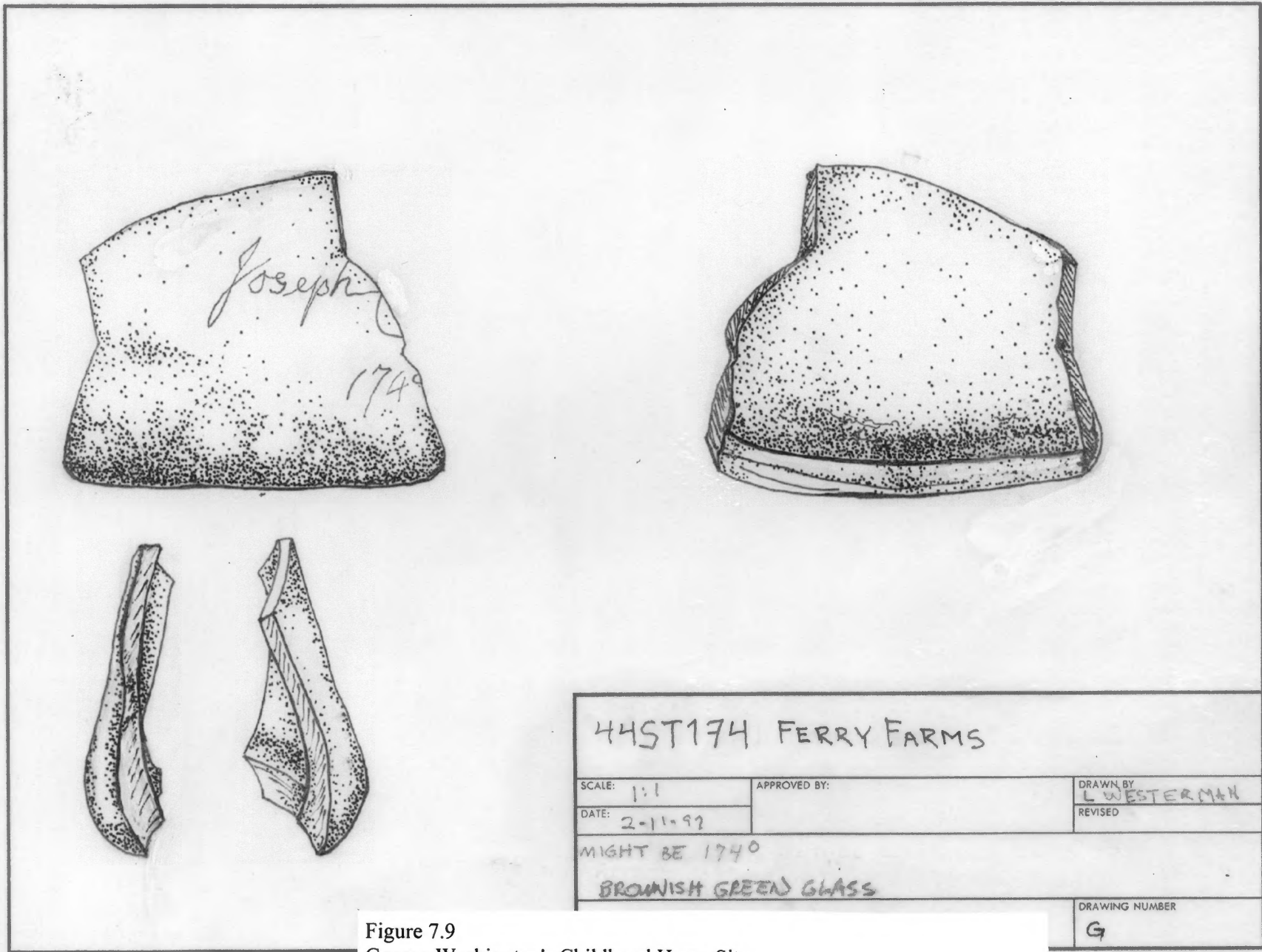


Figure 7.9
 George Washington's Childhood Home Site
 Stafford County, Virginia
 Drawing of Bottle Fragment (dated 174_) from Strother-Washington Cellar
 George Washington's Ferry Farm, 1993



PLATE 20. SMALL FINDS FROM CELLAR; TOP ROW, LEFT TO RIGHT: BRASS LEATHER HARNESS ATTACHMENT, MIRROR GLASS; BOTTOM ROW: GUNFLINT FRAGMENT, BURNED



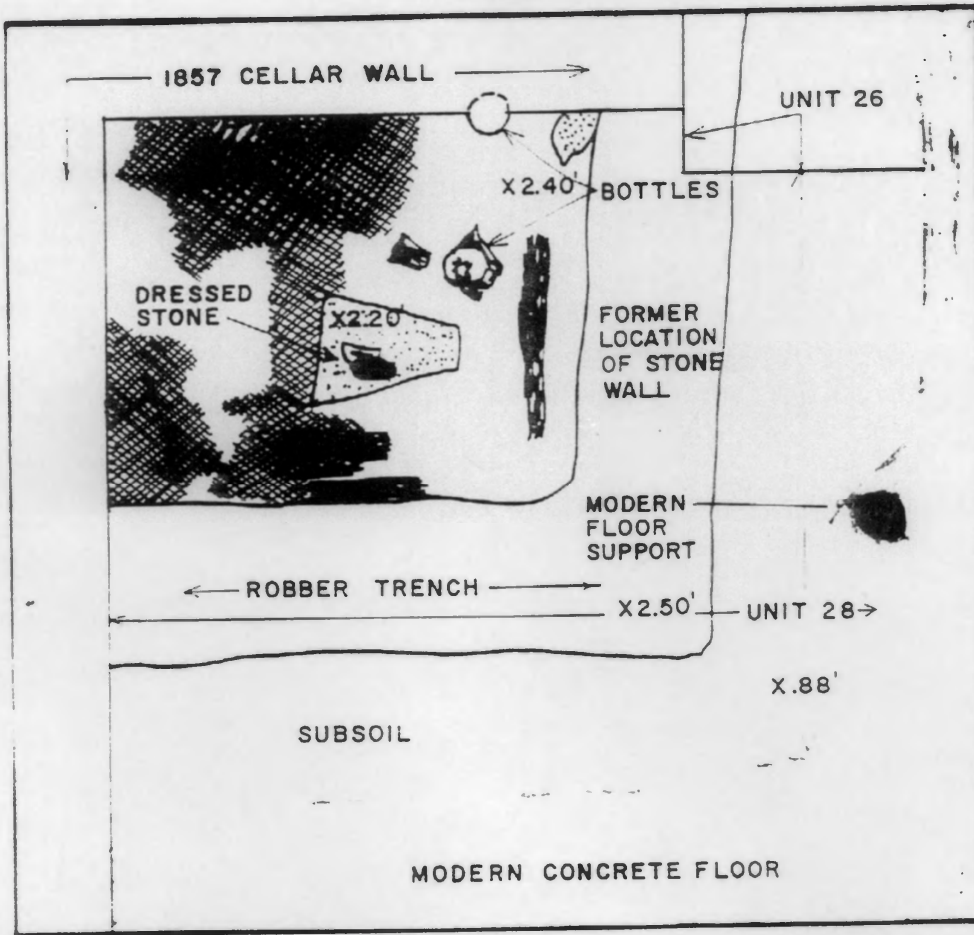
PLATE 21. SMOKING PIPE FRAGMENTS, ROW 1, LEFT TO RIGHT: KAOLIN PIPE BOWS 2 CA 1700-1770 1 CA 1720-1820; ROW 2, DECORATIVE PIPE BOWL FRAGMENT WITH MOLDED BRITISH ROYAL ARMS CA 1730-1770; ROW 3, KAOLIN PIPE STEM, MOUTH DIPPED IN RED WAX; ROW 4, KAOLIN PIPE STEM, MOLDER DESIGN

Figure 7.10

George Washington's Childhood Home Site
Stafford County, Virginia

Small artifacts and smoking pipe fragments from the Strother-Washington Cellar
Photographer, George Washington's Ferry Farm, 1993

PLAN



LEGEND:

- X DEPTH BELOW CONCRETE FLOOR SURFACE
- CHARRED WOOD
- STONE
- ◼ SCORCHED AREA



SCALE: 1"=2'

eh ESPEY, HUSTON & ASSOCIATES, INC.
ENGINEERS & ARCHITECTS

FIGURE 36

PLAN OF UNIT 28
AFTER EXCAVATION
BELOW CONCRETE FLOOR

Figure 7-10

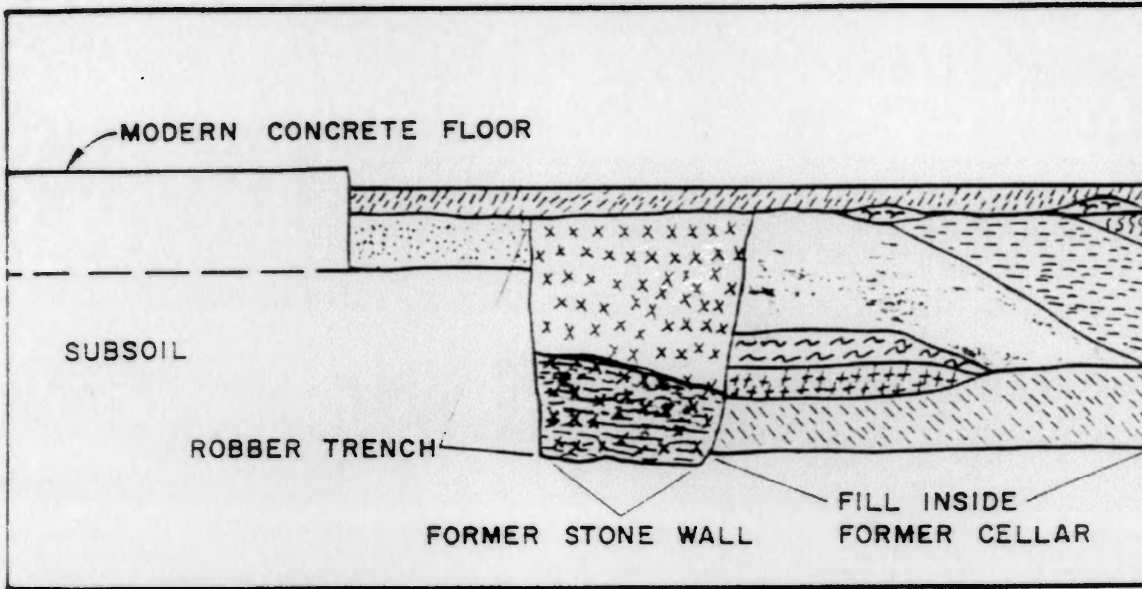


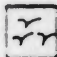

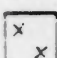
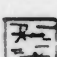
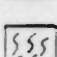

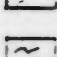

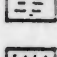


PLATE 27. STORAGE VESSELS FROM CELLAR

- ROW 1:** Staffordshire Ironglazed pot, burned
- ROW 2:** Buckley storage jar, Brown stoneware bottle
- ROW 3:** Staffordshire mottled milkpan, burned
- ROW 4:** Roger's Redware milkpan, Brown stoneware bottle medallion

Figure 7.11
George Washington's Childhood Home Site
Stafford County, Virginia
Storage Vessels from the Strother-Washington Cellar.
Photographer, George Washington's Ferry Farm, 1993

PROFILE



-  YELLOWISH BROWN SAND W/MORTAR
-  COARSE ORANGE SAND
-  ROBBERS TRENCH-DARK ORANGE CLAYEY SAND W/SOME ROCKS
-  ROBBERS TRENCH-REDDISH BROWN CLAYEY SAND W/COARSE SAND AND SOME ROCKS
-  BROWN ASH W/PLASTER, MORTAR
-  DARK GREYISH BROWN ASH W/LARGE AMOUNTS OF CHARCOAL
-  BROWNISH GREY ASH W/STONE, MORTAR, PLASTER, CHARCOAL
-  GREYISH BROWN ASH W/STONE, MORTAR, PLASTER, CHARCOAL
-  LOOSE GREY ASH W/STONE, MORTAR, PLASTER, CHARCOAL
-  REDDISH BROWN ASH W/STONE, MORTAR, PLASTER, CHARCOAL, BURNT CLAY
-  BROWNISH ORANGE CLAYEY SAND W/SOME CELLAR FILL - PROBABLY A LEVELING AGENT

SCALE: 1" = 2'

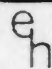
 ESPEY, HUSTON & ASSOCIATES, INC.
ENGINEERS, ARCHITECTS, PLANNERS

FIGURE 37
 WEST PROFILE
 OF UNIT 28

Figure 7-11

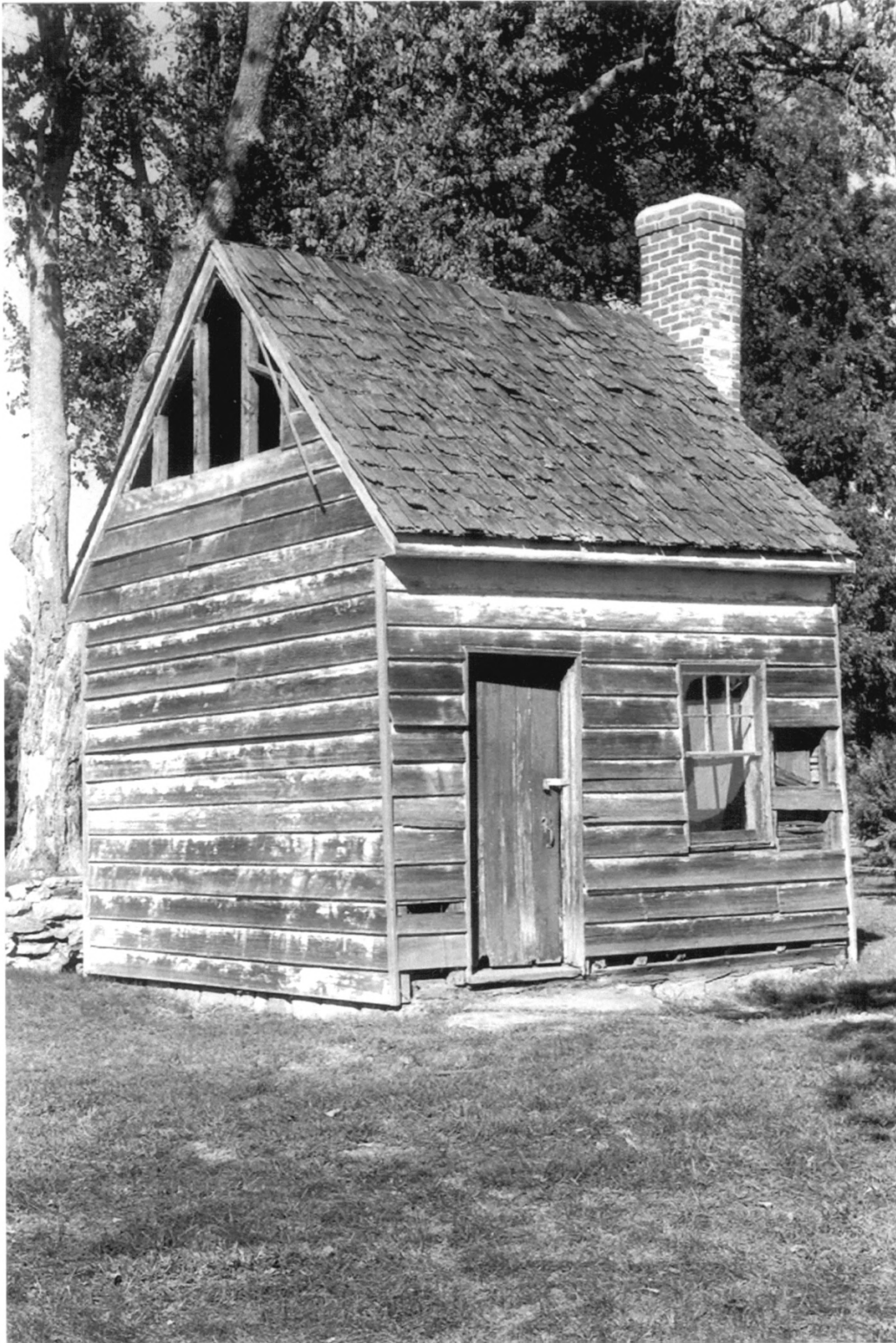


Figure 7.12
George Washington's Childhood Home Site
Stafford County, Virginia
"George Washington's Surveying Office" from the Southwest
Photographer, Jack D. Warren, 1998



PLATE 14. NAILS FROM CELLAR EXCAVATION

LEFT TO RIGHT: Weatherboard, Lath, T-headed, Lath hand wrought nails

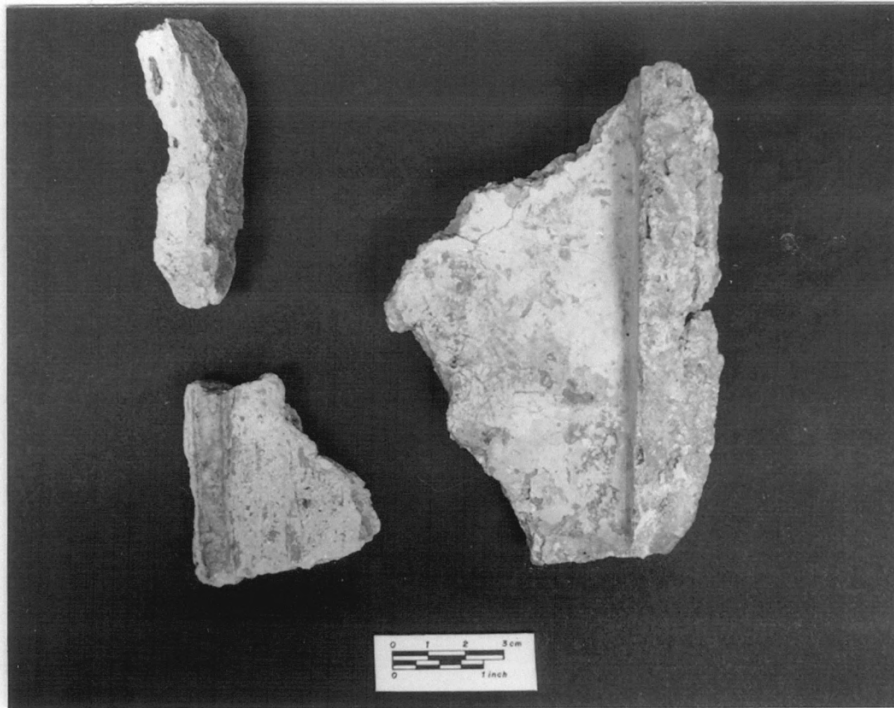


PLATE 16. PLASTER FRAGMENTS FROM CELLAR; INTERIOR PLASTER FRAGMENTS WITH LATHING MARKS

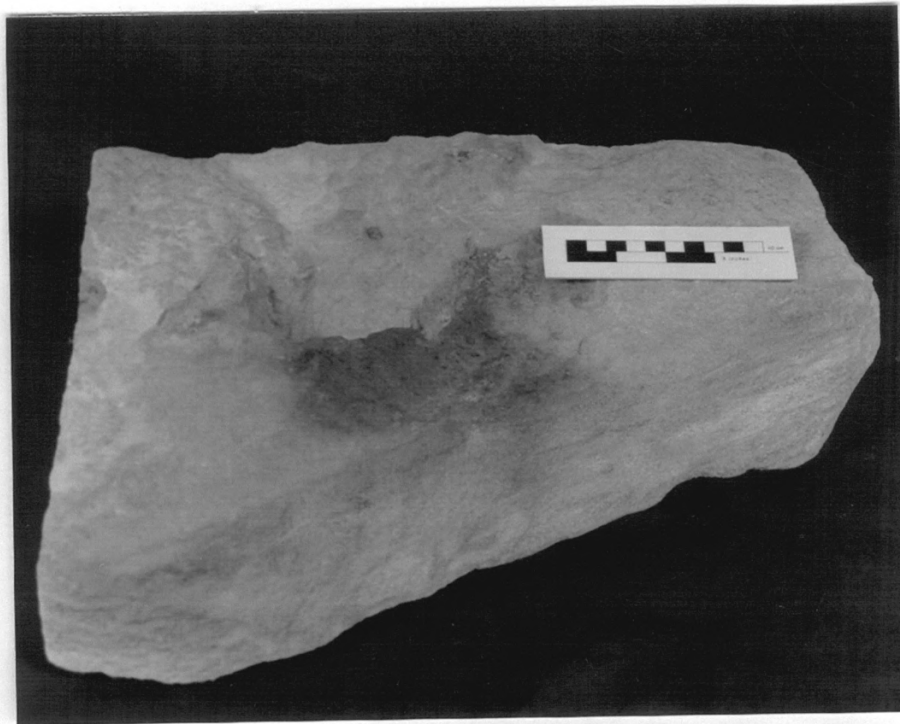


PLATE 17. SANDSTONE SLAB WITH MORTICE CUT (LEFT OF SCALE); CHARRED WOOD FOR VERTICAL STUD OVERLAY BURNT AREAS IN FOREGROUND

Figure 7-14

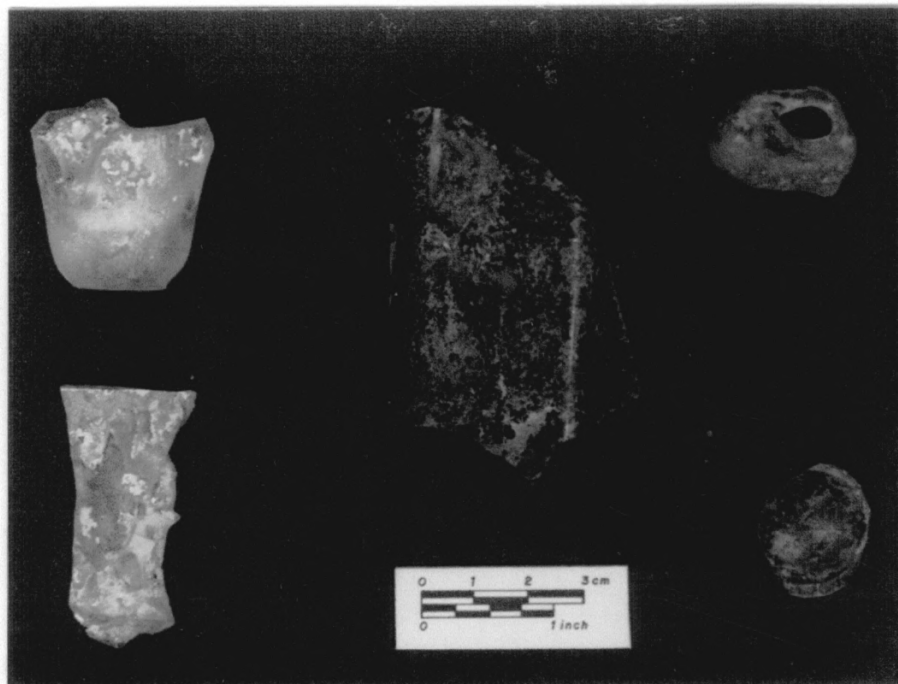


PLATE 22. GLASS FROM CELLAR

LEFT TO RIGHT:

Melted wine bottle bowl and stem, dark green body fragment from a snuff or blacking bottle, melted pharmaceutical bottle, dark green pharmaceutical kick-up

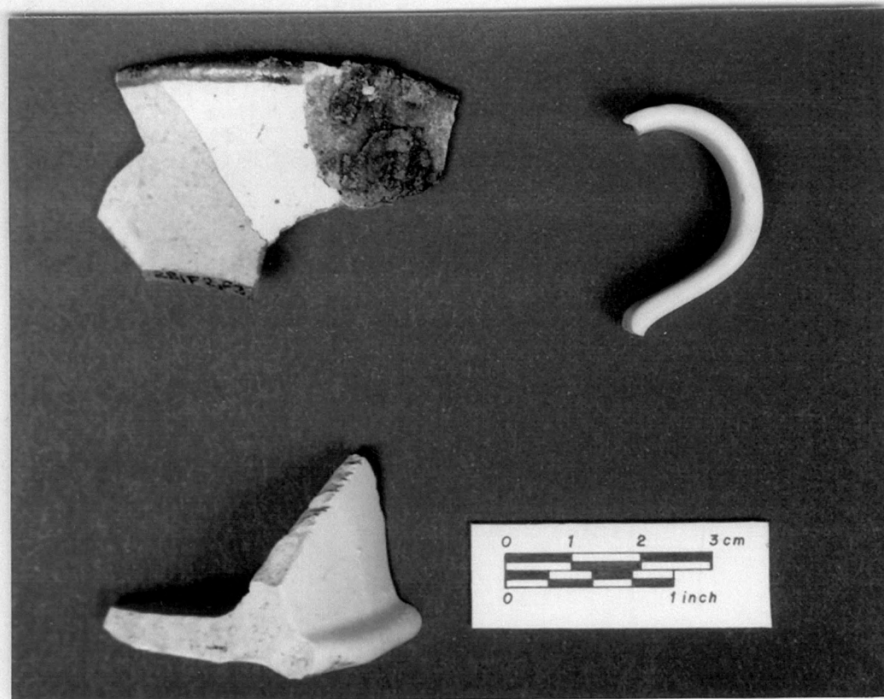


PLATE 23. WHITE SALTGLAZED STONWARE FROM CELLAR; TOP ROW, LEFT TO RIGHT: DIPPED RIM TANKARD FRAGMENT, BURNED, HANDLE, TANKARD BASE



PLATE 24. PORCELAIN FROM CELLAR; LEFT TO RIGHT; OVERGLAZE DESIGN ON A SAUCER WITHOUT A CUP RING, OVERGLAZE DESIGN ON RIM FROM SAUCER, UNDERGLAZE BLUE CUP BASE

Figure 7-17



PLATE 25. DELFTWARE FROM CELLAR; HANDPAINTED OVERGLAZE BLUE DESIGN; TOP ROW, LEFT TO RIGHT: BOWL RIM, PLATE RIM, PLATE RIM, BURNED FLUTED BOWL RIM; BOTTOM ROW, LEFT TO RIGHT: PUNCH BOWL, INDENTED, PLATE RIM, TEAPOT SHOULDER

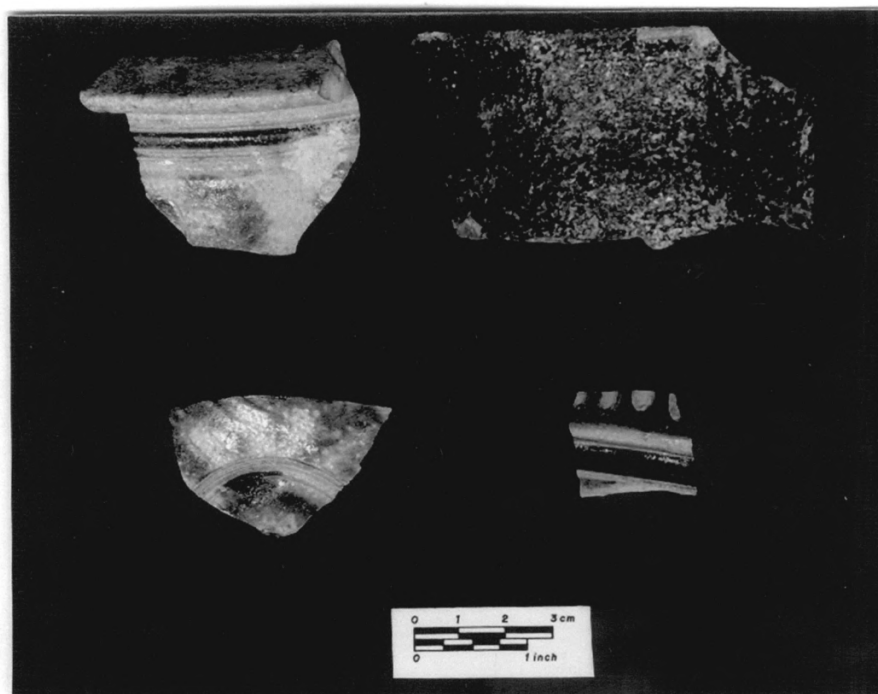


PLATE 26. STONWARE FROM CELLAR; RHENISH GRAY AND BLUE STONWARE; TOP ROW, LEFT TO RIGHT: CHAMBER POT RIM FRAGMENT, TANKARD RIM, BURNED; BOTTOM ROW, LEFT TO RIGHT: CHAMBER POT BODY FRAGMENT, BASE OF JUG

Figure 7-18

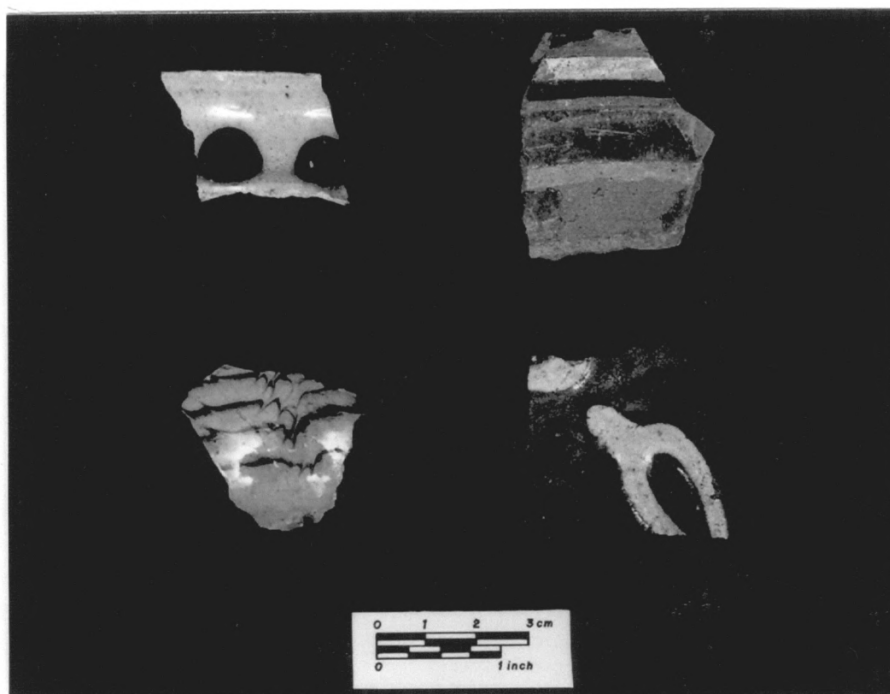


PLATE 28. SLIPWARES FROM CELLAR

ROW 1, LEFT TO RIGHT: Staffordshire "dot ware" posset pot, American slipware pan
ROW 2, LEFT TO RIGHT: Staffordshire "combed" ware posset pot, American slipware

Figure 7-20



Figure 7-23

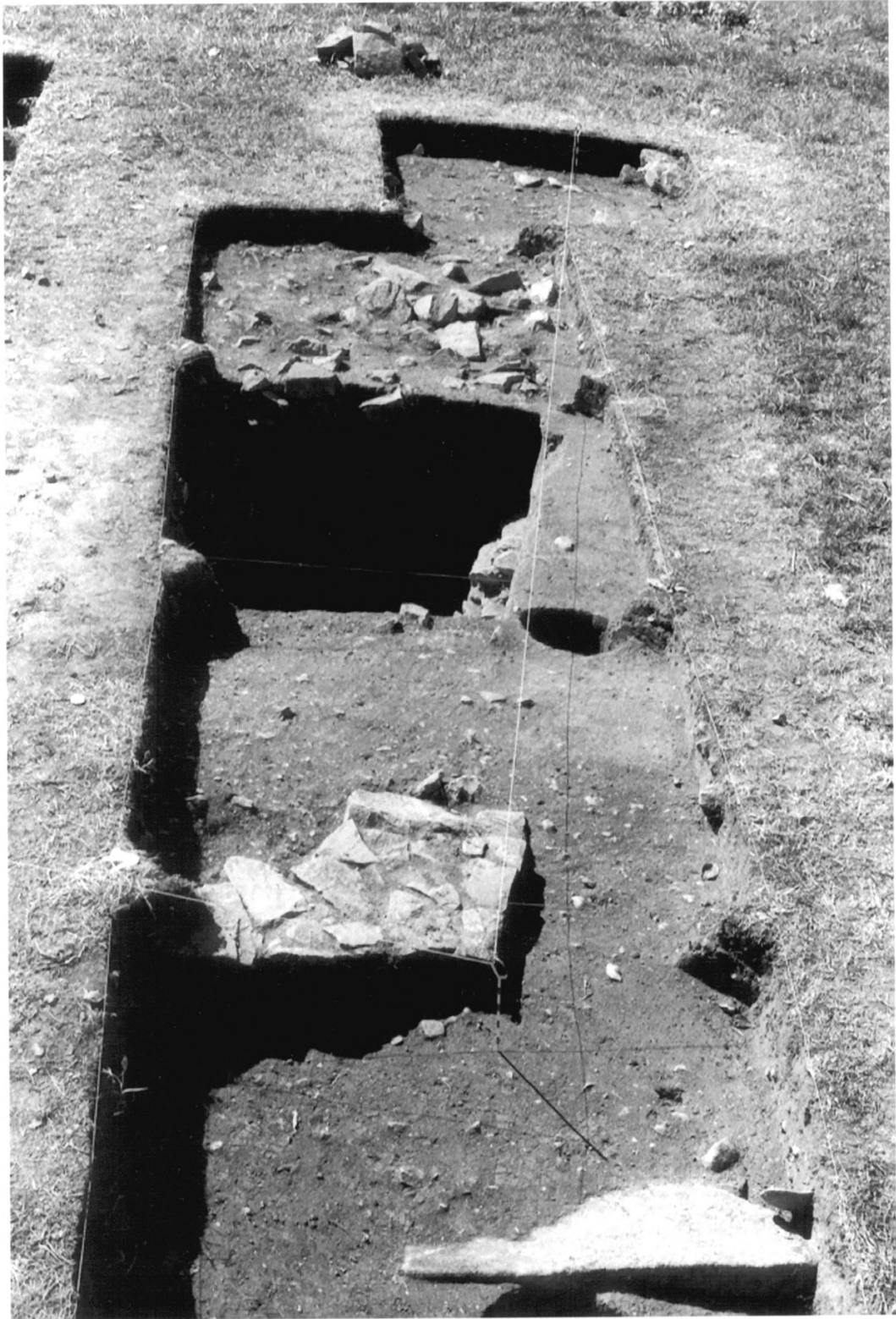


Figure 7-24

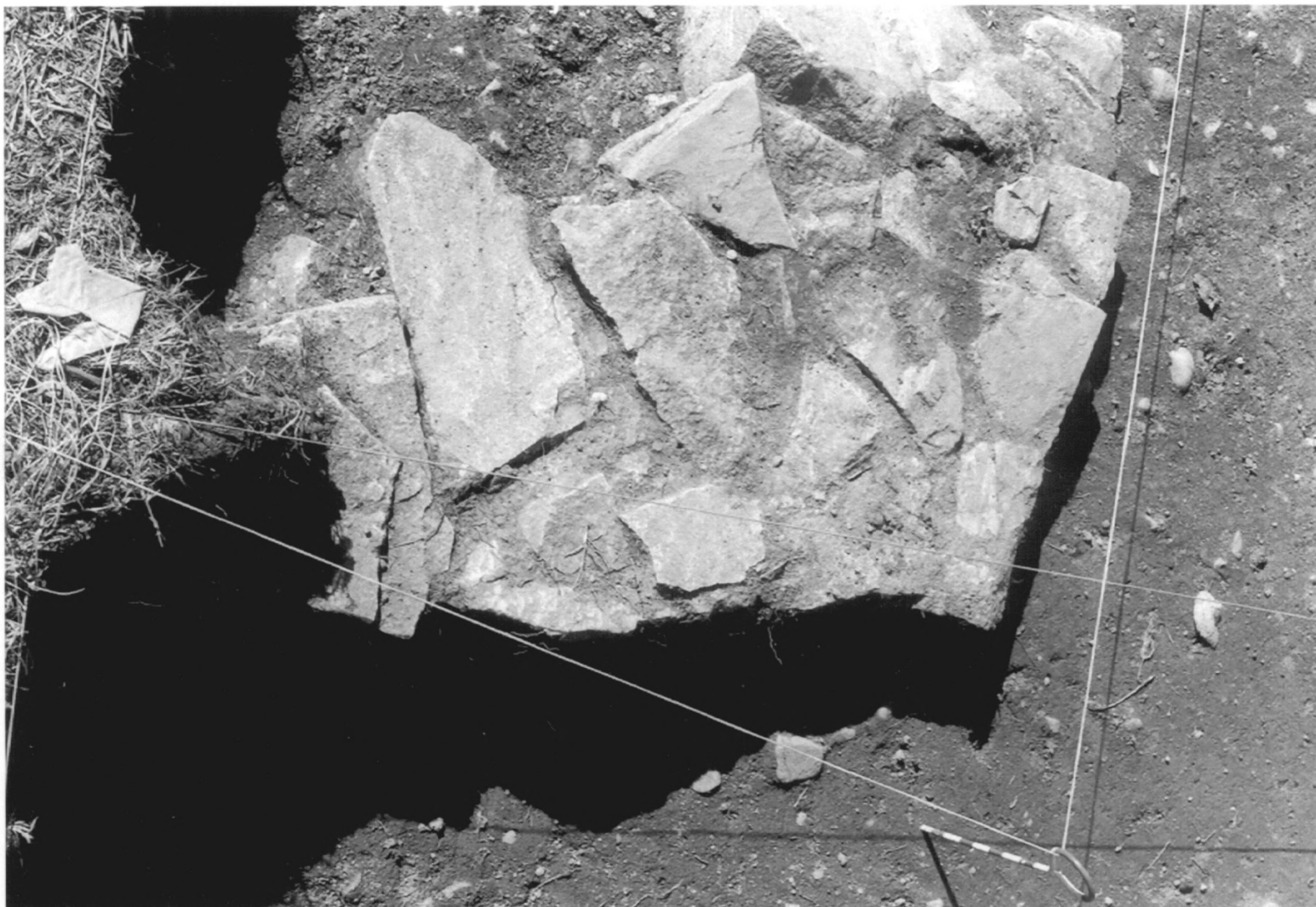


Figure 7-25



Figure 7-28

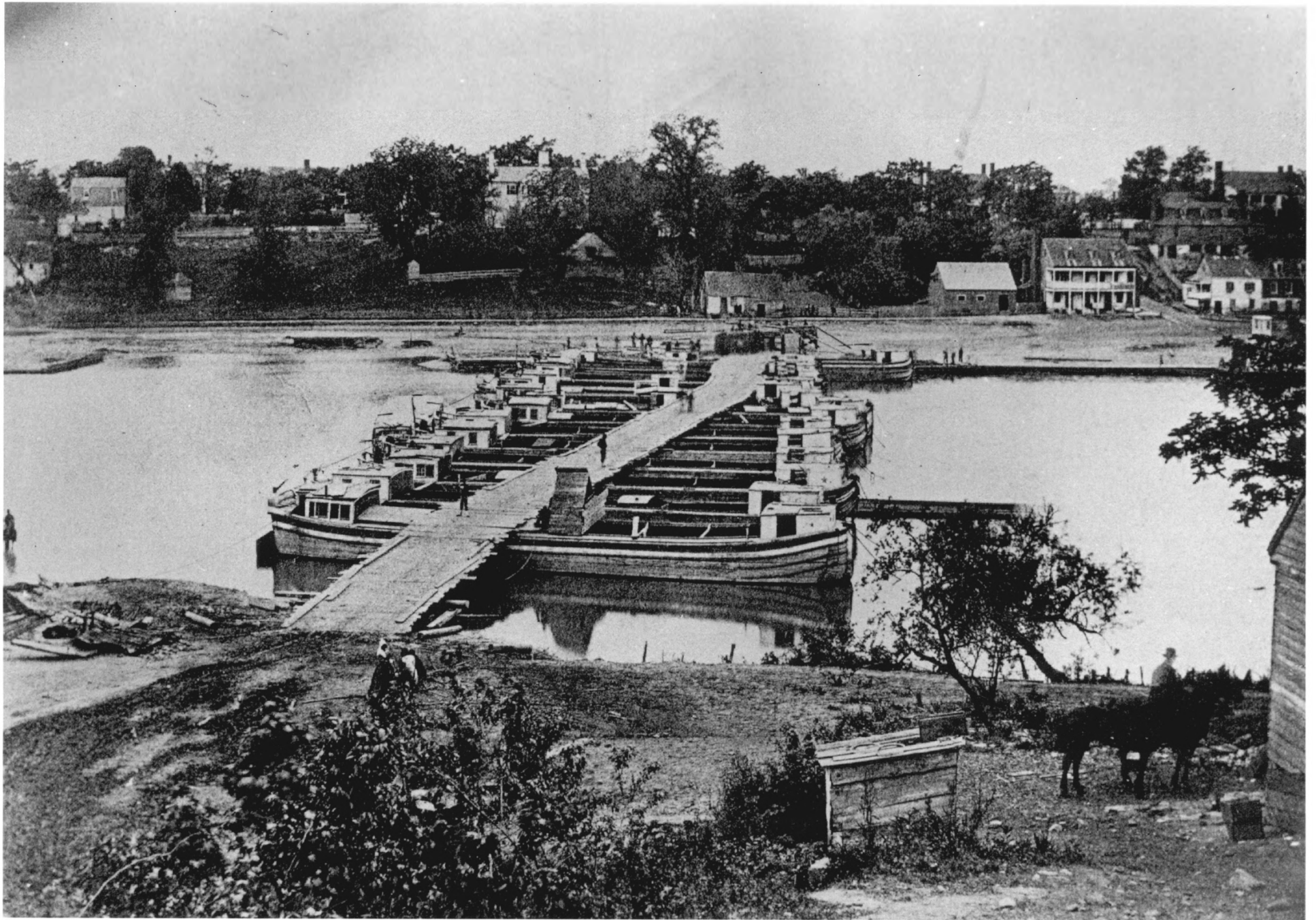


Figure 7-29



PLATE 7. UNIT 14 EXCAVATIONS LOOKING NORTHWEST

Figure 7-26