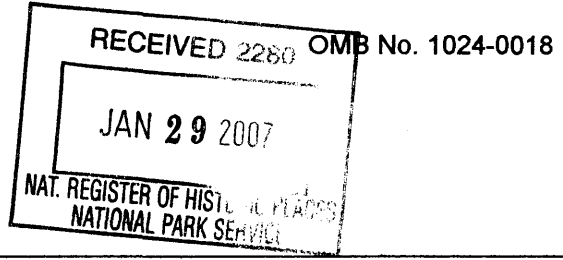


NPS Form 10-900  
(Rev. 10-90)  
United States Department of the Interior  
National Park Service



**NATIONAL REGISTER OF HISTORIC PLACES  
REGISTRATION FORM**

**1. Name of Property**

historic name: Newton County American Legion Post No. 89 Hut  
other names/site number:

**2. Location**

street & number: State Highway 15 North, 4/10 mi. n. of jct. Country Club Rd. Not for publication N/A  
city or town: Decatur vicinity N/A  
state: Mississippi code: MS county: Newton code: 101 zip code: 39327

**3. State/Federal Agency Certification**

As the designated authority under the National Historic Preservation Act of 1966, as amended, I hereby certify that this  nomination  request for determination of eligibility meets the documentation standards for registering properties in the National Register of Historic Places and meets the procedural and professional requirements set forth in 36 CFR Part 60. In my opinion, the property  meets  does not meet the National Register Criteria. I recommend that this property be considered significant  nationally  statewide  locally. (  See continuation sheet for additional comments.)

Kenneth H. P. Paul JAN. 24, 2007  
Signature of certifying official Date

Deputy State Historic Preservation Officer  
State or Federal agency and bureau

In my opinion, the property  meets  does not meet the National Register criteria. (  See continuation sheet for additional comments.)

\_\_\_\_\_  
Signature of commenting or other official Date

\_\_\_\_\_  
State or Federal agency and bureau

**4. National Park Service Certification**

I, hereby certify that this property is:  
 entered in the National Register,  
 See continuation sheet.  
 determined eligible for the  
National Register  
 See continuation sheet.  
 determined not eligible for the  
National Register  
 removed from the National Register  
 other (explain): \_\_\_\_\_

Corey 3-13-07  
Signature of the Keeper Date of Action  
Corey W. Beall

---

**5. Classification**

---

**Ownership of Property:** Private

**Number of Resources within Property:**  
(Do not include previously listed resources in the count)

**Category of Property:** Building

Contributing

1

Noncontributing

buildings

sites

structures

objects

1

Total

**Name of related multiple property listing**

(Enter "N/A" if property is not part of a multiple property listing.)

**Number of contributing resources previously listed  
in the National Register** None

N/A

0

---

**6. Function or Use**

---

**Historic Functions:** Social/meeting hall

**Current Functions:** Social/meeting hall

---

**7. Description**

---

**Architectural Classification(s):** Other: Rustic style

**Materials:**

foundation: brick

roof: asphalt shingle

walls: log

other

**Narrative Description:**

See Continuation Sheets

**United States Department of the Interior  
National Park Service**

**NATIONAL REGISTER OF HISTORIC PLACES  
CONTINUATION SHEET**

Section: 7

Page: 1

Newton County American Legion Post No. 89 Hut  
Newton County, Mississippi

---

Summary

The Newton County American Legion Post No. 89 Hut is located on a slight rise in rural Newton County, about two miles south of Decatur, Mississippi, overlooking a seven acre lake. The one-story rectangular building sits on a north-south axis and has a gently sloping dual-pitched hip roof with broad eaves that cover a three-quarter wrap around gallery supported by double log pillars with Y-braces that rest on brick piers. Walls are constructed of horizontal logs with exposed notched ends, however the side and rear log walls are covered by vertical boards. There are 8/1 double hung sash windows, a half-glazed center door and flanking multiple-panel French doors on the main façade with 6/6 double hung sash windows on other elevations. The roof is covered in shingles and features two symmetrical gablets facing the main elevation and brick chimneys rising from the north and south exterior walls and piercing the roof. Interior walls show the horizontal log construction and the wood ceiling has exposed rafters and trusses, while the floor is covered with wood planks. There are large fireplaces with stone hearths and surrounds on the north and south walls.

Exterior

The Newton County American Legion Post No. 89 Hut is a one story rectangular structure built of horizontal logs. The building sits on a north-south axis with the main façade facing west. The building rests on brick piers which are visible on all facades, but are most apparent on the west façade where they continue above the floor level of the gallery and provide a base for log columns that support the roof. The dual-pitched hip roof covers a wide gallery that extends along the entire west façade and wraps around the north and south ends, with rafter heads exposed. The roof is supported by ten round double log columns sitting on the brick piers with Y-braces at the roof line. A plain rail runs between the log columns. Two gablets, which correspond to projecting bays on the front wall, intersect the hip roof on the west façade. There are brick chimneys on the north and south walls that extend above the roof.

Wooden stairs, placed in the center of the west façade, provide access to the gallery. The west wall is constructed of round logs laid horizontally. Centered in the wall is a half-glazed double door under a wood sign that identifies the building as "American Legion Newton County Post 89". Flanking the door are slightly projecting bays that exhibit the end notching, each with an 8/1 double hung window centered in the west face. Glazed French doors flank the projecting bays.

The gallery wraps around the north and south ends of the building and extends about three-fifths the width of the building. Under the gallery roof there are glazed French doors on both facades with exterior brick chimneys. On the north facade, the exterior wall extends to the edge of the roofline covering two interior rooms, while on the south façade the exterior wall extends beyond the main roofline to create four interior rooms. Vertical boards cover the log walls on the north, south and east facades. There are 6/6 double hung sash windows on the northeast corners and no windows on the south face. Along the east exterior wall there are three ventilation fans and a rear door, as well as two 6/6 double hung windows.

**United States Department of the Interior  
National Park Service**

**NATIONAL REGISTER OF HISTORIC PLACES  
CONTINUATION SHEET**

Section: 7

Page: 2

Newton County American Legion Post No. 89 Hut  
Newton County, Mississippi

---

Interior

The interior of the hut contains a large room with exposed log walls. The ceiling is open with the roof rafters and Howe trusses exposed. There are large ironstone fireplaces with fieldstone surrounds and brick fireboxes on the north and south walls. The floors are covered with wood planks. Along the east wall there is a recessed area, a large raised stage and a kitchen, separated by vestibules. A women's restroom occupies the interior rooms on the north end. A men's restroom is located on the south end, where the remaining three rooms are believed to have provided living space for an onsite caretaker. The southwest room has an interior chimney, a window that has been covered by the exterior cladding and a door that opens to the west with a porch under a shed roof.

The Newton County American Legion Post No. 89 Hut is well maintained. It remains largely unchanged from its original 1934 appearance. The exterior vertical cladding was probably added at a later date, suggested by the covered window in the southwest room. The lower two feet of the log columns supporting the west gallery roof have been removed and replaced with brick pedestals. Neither change detracts from the building's character and it retains a high degree of integrity.

---

**8. Statement of Significance**

---

**Applicable National Register Criteria**Area of Significance  
Architecture

- A** Property is associated with events that have made a significant contribution to the broad patterns of our history.
- B** Property is associated with the lives of persons significant in our past.
- X **C** Property embodies the distinctive characteristics of a type, period, or method of construction or represents the work of a master, or possesses high artistic values, or represents a significant and distinguishable entity whose components lack individual distinction.
- D** Property has yielded, or is likely to yield information important in prehistory or history.

**Period of Significance: 1934****Significant Dates: 1934****Criteria Considerations:**

Property is:

- A** owned by a religious institution or used for religious purposes.
- B** removed from its original location.
- C** a birthplace or a grave.
- D** a cemetery.
- E** a reconstructed building, object, or structure.
- F** a commemorative property.
- G** less than 50 years of age or achieved significance within the past 50 years.

**Significant Person(s) NA****Cultural Affiliation(s) NA****Architect/Builder Unknown****Narrative Statement of Significance:** See continuation sheets.

---

**9. Major Bibliographical References**

---

**Bibliography** See continuation sheet.**Previous documentation on file (NPS)**

- preliminary determination of individual listing (36 CFR 67) has been requested.
- previously listed in the National Register
- previously determined eligible by the National Register
- designated a National Historic Landmark
- recorded by Historic American Buildings Survey  
# \_\_\_\_\_
- recorded by Historic American Engineering Record  
# \_\_\_\_\_

**Primary Location of Additional Data**

- State Historic Preservation Office
- Other State agency
- Federal agency
- Local government
- University
- Other
- Name of repository:
-

United States Department of the Interior  
National Park Service

## NATIONAL REGISTER OF HISTORIC PLACES CONTINUATION SHEET

Section: 8

Page: 3

Newton County American Legion Post No. 89 Hut  
Newton County, MS

---

### Summary:

The Newton County American Legion Post No. 89 Hut, constructed in 1934, is eligible for listing on the National Register of Historic Places under Criterion C as an excellent example of the Rustic style of architecture as that style was developed and applied to the Mississippi built environment. The exterior exposed log construction, exposed rafters and exterior log columns and roof bracing, interior exposed rafters and trusses and stone fireplaces are all elements of the Rustic style and the building is largely intact and retains its 1934 character.

### The American Legion in Newton County

The American Legion was formed in 1919 by United States veterans of combat in the First World War. The organization arose out of a meeting in Paris, known as the Paris Caucus, held in March 1919. A group of veterans wanted to form an organization to support common needs of veterans. Among those who met in Paris were Theodore Roosevelt, Jr., the son of the former President, Lt. Col. George S. White, Maj. Eric Fisher Wood, and Lt. Col. William J. Donovan.<sup>1</sup> The Paris Caucus laid the groundwork for an organizing meeting which was held in St. Louis in May 1919. At that meeting, the general structure, membership eligibility rules and the name "American Legion" were adopted, and the four pillars of the organization, veteran's rehabilitation, Americanism, child welfare, and national security, were adopted.<sup>2</sup>

Even before the St. Louis meeting, veterans' groups were forming in Mississippi. In April 1919, veterans interested in organizing ex-servicemen met in Jackson to select delegates to attend the St. Louis meeting. By June, 1919, the Mississippi Branch of the American Legion met and elected officers.<sup>3</sup> The first annual convention of the Mississippi Branch of the American Legion met on October 21, 1919 in the Hall of the House of Representatives.<sup>4</sup> At that time thirty local posts had been formed.<sup>5</sup> By 1920, one hundred and nineteen posts, including Newton Post No. 89 were organized.<sup>6</sup>

---

<sup>1</sup> Thomas A. Rumer. *The American Legion, An Official History, 1919-1989*. (New York: M. Evans & Company, Inc., 1990), 20.

<sup>2</sup> Rumer, p. 1.

<sup>3</sup> Arthur C. Short. *History of the American Legion, Department of Mississippi, 1919-1943*. (Vicksburg, MS: Mississippi Printing Company, 1943), p.8.

<sup>4</sup> Short, p. 9

<sup>5</sup> Short, p. 23.

<sup>6</sup> Short, p. 24.

United States Department of the Interior  
National Park Service

**NATIONAL REGISTER OF HISTORIC PLACES  
CONTINUATION SHEET**

Section: 8

Page: 4

Newton County American Legion No. 89 Hut  
Newton County, MS

---

Post No. 89 was formed in 1920 with eighteen original members. F. N. Moseley was elected Post Commander and M.B. Simmons was elected Adjutant.<sup>7</sup> Other posts were organized in the Newton County communities of Hickory and Decatur. However, the Hickory and Decatur posts lost their charters in 1925.<sup>8</sup> The Newton post changed its name to Newton County Post No. 89 in 1927.<sup>9</sup> Post 89 has continued in operation since that date.

The Memorial Hut

In October 1931, the Newton County American Legion Post No. 89 elected new officers and adopted a resolution to build its own Legion Home.<sup>10</sup> Two years passed before the post purchased the property for its building. In May 1933, the post purchased property south of Decatur, Mississippi. Members anticipated it would take about fifty days to build what was described as a "dream long cherished in the hearts of Legionnaires of Newton County to construct a memorial to honor their missing Comrades of the Great War." Plans called for a 60x90 rustic log hut.<sup>11</sup>

Construction was completed by July 1933. The completed hut measured 108x86 feet and overlooked a seven acre lake. The post invited all the people of Newton County to use the property as a recreation center. Construction of the hut, among other projects, won Post No. 89 the Community Service Cup at the 1933 state convention.<sup>12</sup>

Post No. 89 was preparing to host a visit from the American Legion's National Commander in December 1933 when tragedy struck and a "mysterious midnight fire" destroyed the American Legion Hut.<sup>13</sup> However, the Post rebounded and by June 1934, the hut was rebuilt on the original site. Living quarters were added for onsite custodians.<sup>14</sup> Since that time, the American Legion Hut has hosted countless local social and civic functions.

The Rustic Style

The horizontal log building has a long history in the United States. The form was probably introduced by Swedish and Finnish settlers in Pennsylvania in 1638.<sup>15</sup> The form was adopted by Scotch-Irish settlers, who carried

---

<sup>7</sup> Short, p. 149.

<sup>8</sup> Short, p. 116, 121.

<sup>9</sup> Short, p. 150.

<sup>10</sup> *The Newton Record*, October 21, 1931.

<sup>11</sup> *The Newton Record*, May 4, 1933.

<sup>12</sup> *The Newton Record*, July 13, 1933.

<sup>13</sup> *The Newton Record*, December 28, 1933.

<sup>14</sup> *The Newton Record*, June 31, 1934.

<sup>15</sup> Bruce Bomberger. "The Preservation and Repair of Log Homes." Preservation Briefs 26. Washington, D.C.:United States Department of the Interior, National Park Service, September 1981, p. 2.

**United States Department of the Interior  
National Park Service**

**NATIONAL REGISTER OF HISTORIC PLACES  
CONTINUATION SHEET**

Section: 8

Page: 5

Newton County American Legion Post No. 89 Hut  
Newton County, MS

---

the form into settlements in the Carolinas. As settlers from the Carolinas moved into Mississippi they brought the building style with them.

In the period from about 1870 through the 1930s, horizontal log construction came back into use in a number of applications under the general classification of "Rustic style," a term broadly applied to hunting cabins, ranger stations and log buildings which exhibited certain characteristics. Among these were log-siding, peeled logs, rough cut lumber, indigenous stone and overhanging roofs with exposed rafters and porches.<sup>16</sup> Using native materials and designs, Rustic style buildings were made to appear to belong to and be a part of their setting. Architecture of this style depended on natural color, shapes and textures of wood and stone for decorative effect.

Although introduced in New York in the 1870s, the Rustic style did not become popular in Mississippi until after 1916, when the National Park Service adopted it for use in lodges and camps in the national parks. The earliest Rustic style building that has been identified in the state is the Trotter-Cuevas log house in Forrest County, which was built in 1924. Although other Rustic style houses have been identified, the majority of the buildings of this style appear to be community houses, many of which were built by the WPA, or buildings located in state parks constructed by the Civilian Conservation Corps in the 1930s and early 1940s. The CCC used the Rustic style to express a close organic relationship with the natural environment.

Other notable examples of Rustic style buildings in Mississippi that are constructed of log include the Carrollton Community House (built 1935-36 by the WPA), the Enterprise Community House (c. 1935 ; NR, 1994), and buildings and structures at the Clear Springs Recreation Area in Franklin County (NR, 1999). In addition, the Mississippi state parks built by the CCC between 1934-1942 that contain good examples of Rustic style log buildings include Clarkco, Holmes County (NR, 1997), Legion (NR, 1998), Leroy Percy, Roosevelt (NR, 1995), and Tombigbee (NR, 1996).

The Newton County American Legion Post No. 89 hut clearly exhibits the primary characteristics of the Rustic style: log construction, use of peeled logs, wide overhanging roof with exposed rafters. It maintains the organic relationship with its hilltop setting expected of a Rustic style building. It is remarkably unchanged since it was built in 1934.

---

<sup>16</sup> Ernest Burden. *Illustrated Dictionary of Architecture*. 2<sup>nd</sup> Ed. (New York: McGraw-Hill, 2002), p.284.



United States Department of the Interior  
National Park Service

**NATIONAL REGISTER OF HISTORIC PLACES  
CONTINUATION SHEET**

Section: 9

Page: 6

Newton County American Legion Post No. 89 Hut  
Newton County, MS

---

**Bibliography**

Bomberger, Bruce. "The Preservation and Repair of Log Homes." *Preservation Briefs* 26. Washington, D.C.: United State Department of the Interior, National Park Service, September 1981.

Burden, Ernest. *Illustrated Dictionary of Architecture*, 2<sup>nd</sup> ed. New York: McGraw-Hill, 2002.

Kaiser, Harvey H. "The Adirondack Rustic Style." *The Old House Journal*, Vol. XI, No. 1, January/February 1983, p. 1.

Mississippi Department of Archives and History Resources Inventory.

*The Newton Record*.

Poppeliers, John C. and S. Allen Chambers, Jr. *What Style Is It?* Rev. Ed. Hoboken, NJ: John Wiley & Sons, Inc., 2003.

Rumer, Thomas A. *The American Legion, An Official History, 1919-1989*. New York: M. Evans & Company, Inc., 1990.

Short, Arthur C. *History of the American Legion, Department of Mississippi 1919-1943*. Vicksburg, MS: Mississippi Printing Company, 1943.

---

**10. Geographical Data**

---

Acreage of Property: 24

UTM References:	Zone	Easting	Northing	Zone	Easting	Northing	
A	16	302480	3588820	C	16	302700	3588400
B	16	302700	3588820	D	16	302320	3588400

\_\_\_ See continuation sheet.

**Verbal Boundary Description** See continuation sheet.

**Boundary Justification:** See continuation sheet.

---

**11. Form Prepared By**

---

name/title: William M. Gatlin		date: December 11, 2006
organization: Mississippi Department of Archives and History		telephone: 602-576-6951
street & number: P.O. Box 571		zip code: 39202
city or town: Jackson	state: MS	

---

**Additional Documentation**

---

Submit the following items with the completed form:

Continuation Sheets

Maps

A USGS map (7.5 or 15 minute series) indicating the property's location.

A sketch map for historic districts and properties having large acreage or numerous resources.

Photographs

Representative black and white photographs of the property.

Additional items (Check with the SHPO or FPO for any additional items)

---

**Property Owner(s)**

---

name: Newton County American Legion Post No. 89 c/o Louis Foley, Post Commander		telephone:
street & number: 2167 Highway 5035		zip code 39345:
city or town: Newton	state: MS	

---

**Paperwork Reduction Act Statement:** This information is being collected for applications to the National Register of Historic Places to nominate properties for listing or determine eligibility for listing, to list properties, and to amend existing listings. Response to this request is required to obtain a benefit in accordance with the National Historic Preservation Act, as amended (16 U.S.C. 470 et seq.).

**Estimated Burden Statement:** Public reporting burden for this form is estimated to average 18.1 hours per response including the time for reviewing instructions, gathering and maintaining data, and completing and reviewing the form. Direct comments regarding this burden estimate or any aspect of this form to the Chief, Administrative Services Division, National Park Service, P.O. Box 37127, Washington, DC 20013-7127; and the Office of Management and Budget, Paperwork Reductions Projects (1024-0018), Washington, DC 20503.

**United States Department of the Interior  
National Park Service**

**NATIONAL REGISTER OF HISTORIC PLACES  
CONTINUATION SHEET**

Section: 10, Photograph Log Page: 7 Newton County American Legion Post No. 89 Hut  
Newton County, Mississippi

---

**Verbal Boundary Description:**

All that part of the NE ¼ of the SE ¼ of Section 30, Township 7 North, Range 18 East, lying and being on the East side of Mississippi State Highway # 15, as same presently runs over and across said NE ¼ of the SE ¼ of Section 30, Township 7 Range 12 East, and being 24 acres more or less.

**Boundary Justification:**

This is the area surrounding and historically associated the Newton County American Legion Post No. 89 Hut, which constitutes the characteristic-defining setting for the Rustic style building.

**Photograph Log:**

For all photographs:

1. Newton County American Legion Post No. 89 hut
2. Newton County, MS
3. Richard J. Cawthon
4. 18 February 2005
5. Mississippi Department of Archives and History

Photograph No. 1: View to the Southeast, Exterior

Photograph No. 2: View to the Southwest, Exterior

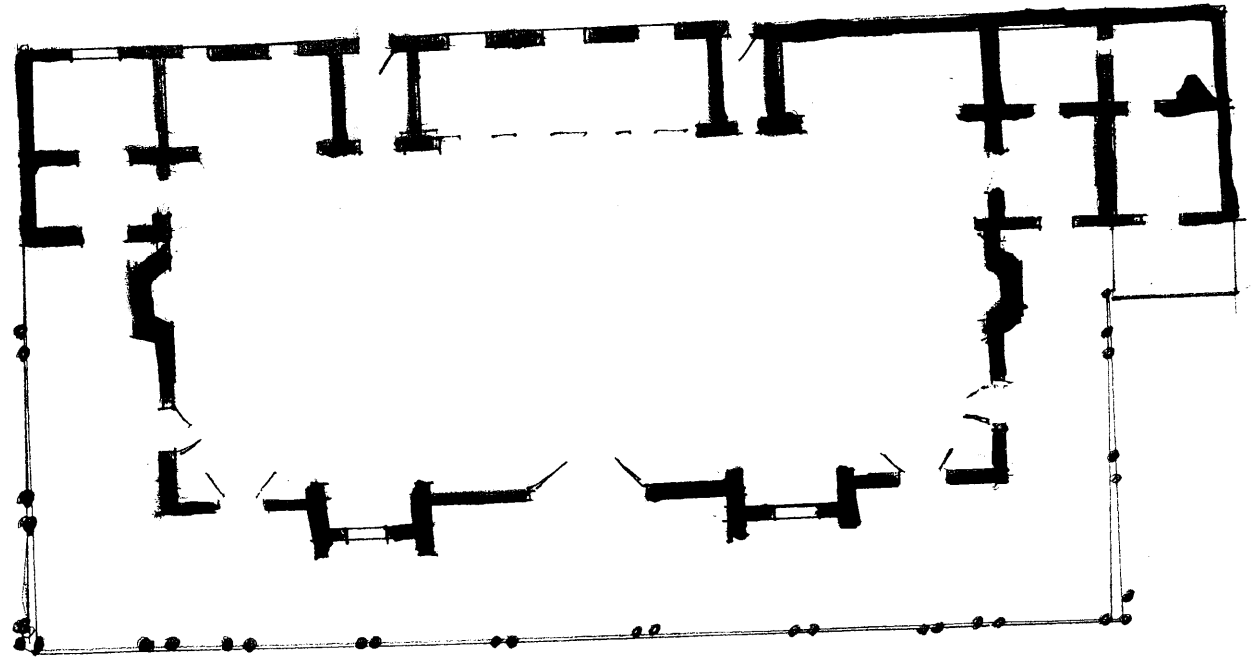
Photograph No. 3: View to the North, Exterior

Photograph No. 4: View to the South, Gallery

Photograph No. 5: View to the North, Interior

Photograph No. 6: View to the South, Interior

Newton County American Legion  
Post No. 89 Hut



**United States Department of the Interior  
National Park Service**

**NATIONAL REGISTER OF HISTORIC PLACES  
CONTINUATION SHEET**

Section:            Photograph Log

Page: 8

Newton County American Legion Post No. 89 Hut  
Newton County, MS

---

Photograph No. 7    View to the Southeast, Interior, stage

Photograph No. 8    View to the East, Interior, alcove

Photograph No. 9    Interior, exposed roof trusses