

United States Department of the Interior  
National Park Service

National Register of Historic Places  
Registration Form

This form is for use in nominating or requesting determinations for individual properties and districts. See instructions in How to Complete the National Register of Historic Places Registration Form (National Register Bulletin 16A). Complete each item by marking "x" in the appropriate box or by entering the information requested. If any item does not apply to the property being documented, enter "N/A" for "not applicable." For functions, architectural classification, materials, and areas of significance, enter only categories and subcategories from the instructions. Place additional entries and narrative items on continuation sheets (NPS Form 10-900a). Use a typewriter, word processor, or computer, to complete all items.

1. Name of Property

historic name West Hatfield Historic District  
other names/site number \_\_\_\_\_

2. Location

street & number 3-12 Church Ave., 2 Linseed Rd., 23-42 West Street n/a not for publication  
city or town Hatfield n/a vicinity  
state Massachusetts code MA county Hampshire code 015 zip code 01038

3. State/Federal Agency Certification

As the designated authority under the National Historic Preservation Act of 1986, as amended, I hereby certify that this  nomination  request for determination of eligibility meets the documentation standards for registering properties in the National Register of Historic Places and meets the procedural and professional requirements set forth in 36 CFR Part 60. In my opinion, the property  meets  does not meet the National Register Criteria. I recommend that this property be considered significant  nationally  statewide  locally. ( See continuation sheet for additional comments.)

Betsy Friedberg, National Register Director 1/4/05  
Signature of certifying official/Title Cara H. Metz, State Historic Preservation Officer Date  
Massachusetts Historical Commission

State or Federal agency and bureau

In my opinion, the property  meets  does not meet the National Register criteria. ( See continuation sheet for additional Comments.)

Signature of certifying official/Title \_\_\_\_\_ Date \_\_\_\_\_  
State or Federal agency and bureau \_\_\_\_\_

4. National Park Service Certification

I, hereby certify that this property is:  
 entered in the National Register  
 See continuation sheet.  
 determined eligible for the National Register  
 See continuation sheet.  
 determined not eligible for the National Register  
 removed from the National Register  
 other (explain): \_\_\_\_\_

John Beall Signature of the Keeper  
2/24/05 Date of Action

West Hatfield HD  
Name of Property

Hampshire, MA  
County and State

**5. Classification**

**Ownership of Property**

(Check as many boxes as apply)

(Check only one box)

- private
- public-local
- public-State
- public-Federal

- building(s)
- district
- site
- structure
- object

**Number of Resources within Property**

(Do not include previously listed resources in the count.)

Contributing	Noncontributing	
23	8	building
		sites
		structures
		objects
23	8	Total

**Number of contributing resources previously listed in the National Register**

0

**Name of related multiple property listing**

(Enter "N/A" if property is not part of a multiple property listing.)

n/a

**6. Function or Use**

**Historic Functions**

(Enter categories from instructions)

Domestic: Single dwelling

Religion: religious facility

Agriculture: processing/storage/agricultural field

Transportation: road-related/rail-related

**Current Functions**

(Enter categories from instructions)

Domestic: Single dwelling

Religion: religious facility

Agriculture: processing/storage/agricultural field

Transportation: road-related/rail-related

**7. Description**

**Architectural Classification**

(Enter categories from instructions)

Early Republic: Federal Mid 19<sup>th</sup> Century: Greek Rev.

Late Victorian: Queen Anne Late 19<sup>th</sup> and Early 20<sup>th</sup>

Century American Movements

**Materials**

(Enter categories from instructions)

foundation Stone: granite Concrete Brick

walls Wood: weatherboard

Synthetics: vinyl

roof Asphalt Metal

other

**Narrative Description**

(Describe the historic and current condition of the property on one or more continuation sheets.)

United States Department of the Interior  
National Park Service

National Register of Historic Places  
Continuation Sheet

West Hatfield HD  
Hatfield (Hampshire), MA

Section number      - Page  1

---

The district of West Hatfield, MA is part of the alluvial floodplain on the west side of the Connecticut River. It is bounded on the west by the rocky uplands known as "The Rocks" and Horse Mountain, and is cut off from the rest of the town's flood plain on the east by Interstate 91. It is a relatively narrow section of land that is bisected in a north-south direction by US Route 5-MA Route 10.

The district is a mix of commercial, residential, and agricultural buildings reflecting its history as a thinly settled agricultural area that shifted to commercial use at the advent of the automobile and Route 5-10. Today the district's landscape is both densely settled and in active agricultural use. Stylistically, the district's buildings are predominantly mid-19<sup>th</sup> century vernacular farmhouses and cottages to mid- and late 20<sup>th</sup> century commercial and transportation-related buildings of mainly utilitarian forms. In the discussion of buildings and structures that follows, the description is arranged chronologically.

#### RESIDENTIAL, INSTITUTIONAL AND AGRICULTURAL BUILDINGS

Set close to the road, the earliest house in the district, the Lorenzo Cutter House, 33 West Street, ca. 1830 (MHC #312, Photograph No. 1) is a late-Federal style building that shows its original forms and many details despite alterations. It is 2½ stories in height, five bays wide and two bays deep under a side-gable roof of slate. The vinyl-sided house rests on granite foundations and has a two-story ell, followed by a 1½ story ell on the west. The clapboard ells have asphalt roofs. Federal in style is the trabeated entry that is composed of a double height entablature on slightly battered pilasters. The entry door itself is neo-Victorian in style and sidelights have been re-glazed. Windows are all 6/6 replacements. Beyond the ells is a separate garage and garage/shop from the 1920s.

The Billings-Strong House, 2 Linseed Road, ca. 1845 (MHC #307, Photograph No. 4) is a 2½ story, Italianate style house that faces south on a corner lot. The main block of the clapboard sided house is three bays wide and three bays deep and there is a 1½ story ell on the west for a rectangular plan. The end-gable, slate roof has broad eaves overhangs with molded cornice and a rondel window in its east gable field. The main entry surround is trabeated and window lintels have double caps. Typical of the Italianate style, first floor windows are close to full length.

(continued)

United States Department of the Interior  
National Park Service

National Register of Historic Places  
Continuation Sheet

West Hatfield HD  
Hatfield (Hampshire), MA

Section number 7 Page 2

---

Approximately at the turn of the century, the house was altered by the addition of a number of Colonial Revival details. There is a wraparound porch that is supported by Colonial Revival columns on south and east elevations, and its balustrade has lyre-shaped railings. Colonial Revival as well is the large south window with transom. What were probably 6/6 Italianate sash were altered to 6/1 throughout the house.

Adjacent to the house is a secondary apartment/office building that was originally a carriage house, ca. 1900, but altered ca. 1950. It is a 1½ story building with multiple additions. It is followed on the west by a concrete block repair shop of ca. 1980 and a large, south-facing tobacco sorting shop, ca. 1900. The sorting shop is a well-preserved example of a once-common, Hatfield agricultural building. A utilitarian building, it is 1½ stories in height and has an end-gable roof. The building rests on high brick foundations that have large 6-light, fixed sash windows inset to allow light to the lowest level of the building. The shop has an asphalt-shingled roof with one shed-roofed dormer and interior chimney. Fenestration and door openings are asymmetrical, but the building is approximately 9 bays in length and 4 bays in width. There is one south entry to the building reached by a set of stairs. It is sheltered by a shed roof hood. Windows in the vinyl-sided building on the upper stories are a mixture of vinyl replacements, 1/1 wood sash and some blocked in openings. There is a second entry on the east elevation and a one-story addition across the north for a shed roof extension.

The Fitch-Korza House, 23 West Street, ca. 1860 (MHC #306, Photograph No. 5) is a vinyl sided, 1½ story, front gabled house that is three bays wide and two bays deep. The main block of the house displays no particular stylistic details although a full width porch supported by turned posts on the street elevation is Queen Anne in style. There is a 1½ story ell on the west. The roof is asphalt covered. There are three outbuildings associated with the house and its commercial functions: two tobacco sheds – one vinyl sided and in use as an equipment barn with over-scaled garage doors in its gable end – and a livestock barn.

The Congregational Chapel, 11 Church Avenue, 1889 (MHC #303, Photograph No. 6) was constructed in the Stick Style and is the most high-style building in the district. It is completely vinyl sided in patterns mimicking clapboard and imbricated shingles, with stick work and window panels also indicated. The building is 1½ stories on a high brick basement. It is three bays wide and nine bays long below a front-gabled roof that is asphalt shingle covered. At the northwest corner of the building is a two-story tower with a pyramidal hipped roof. In the front gable of the chapel is a king-post truss ornament with turned struts, and in the gable field is a Gothic-inspired

(continued)

United States Department of the Interior  
National Park Service

National Register of Historic Places  
Continuation Sheet

West Hatfield HD  
Hatfield (Hampshire), MA

Section number 7 Page 3

---

lancet window. Beneath the front gable, the center entrance into the chapel is reached by an eight-step stoop sheltered by a front gabled porch on turned posts. The entry itself is composed of double-leaf, four-panel doors topped by a four-light transom. Sash in the chapel is 2/2 and there are two enclosed basement entries with arched roofs on the east elevation.

The modest Merle Strong House and Post Office at 38 West Street, ca. 1900 (MHC #313, Photograph No. 7) is a 1½ story, vinyl-sided cottage with a front-gabled roof of asphalt shingles. Three bays wide and two bays deep, it has a fully enclosed porch and a one-story wing, three bays long on the south. The house has brick foundations. Indicative of its simplicity and conservative style, the house has thin, unboxed eaves and could rather easily be mistaken for a building of the early 1800s. This is an accurate date. All sash is 1/1 vinyl replacement.

The Strong-Osepowicz House at 6 Church Avenue, 1913 (MHC #310), is a 2½ story, Queen Anne style house with a front-gabled roof and a one-story enclosed porch on its south, or street, elevation. There are transverse gable bays on both the east and west elevations for a shallow Greek cross plan. The building is wood shingle-sided and has an asphalt shingle covered roof and what appear to be parged foundations. It is a stylistically modest house. All windows are 1/1 replacement sash. North of the house is a long, vertically sided livestock barn, ca. 1900, a garage, ca. 1900 and on the west a shop with three sets of double leaf door entries, ca. 1900.

Set on a corner lot is the father and daughter-owned Eugene and Mae Strong House, 12 Church Avenue, 1913 (MHC #305). Built by Eugene Strong, the house is 2½ stories in height with a front-gable roof. Indicative of its construction simplicity, the eaves do not make returns. Transverse gables at each side give the building a Latin cross plan and a Queen Anne style interior volume. At the same time, columns support a wraparound porch giving the house a Colonial Revival designation. There are brick foundations; the siding is wood clapboard; and the foundations are brick. The modest house is two bays wide and two bays deep with the verandah and transverse gables giving it greater volume. All the windows have replacement sash.

At the Joe Chandler House, 42 West Street, 1914 is another version of the economical vernacular farmhouse that was favored in town at the turn of the 20<sup>th</sup> century. The house is 2½ stories in height under a front-gabled roof whose eaves project broadly. A full width porch is the house's main decorative feature. Typical of the district, it has been vinyl-sided and all its windows have

(continued)

United States Department of the Interior  
National Park Service

National Register of Historic Places  
Continuation Sheet

West Hatfield HD  
Hatfield (Hampshire), MA

Section number 7 Page 4

---

1/1 vinyl replacement sash. These latter two alterations were frequently made to properties in West Hatfield during the last three decades as a means of reducing maintenance.

The vinyl-sided Lutheran Parsonage at 7 Church Avenue, 1931, is 2½ stories high with an end gable roof covered with asphalt shingles. The Colonial Revival style house is three bays wide and two deep and has a full width porch on fluted, half-length columns over an enclosed balustrade. Sash is typical Colonial Revival style with 3 vertical lights/1. A separate garage dates from the early 1960s.

The George Betsold House, 29 West Street, ca. 1939 (MHC #311) is a 2½ story eclectic house that mixes the Dutch Colonial Revival and English cottage styles. Built with the help of his uncle Frank Betsold (who also built the house at 122 West Street) according to the assessor's records, ca. 1939, it has the end-gable, gambrel roof of the Dutch Colonial Revival. This style is coupled with the English Cottage style that is represented by the steeply pitched, shallow transverse gable which rises two stories and contains the entry. Ubiquitous with all the styles of its period is the glassed-in porch on the south. The two-pile house has paired window bays at each side of the entry, and there is a center chimney on the asphalt-shingled roof. The building is vinyl sided and sits on brick foundations. There is a garage/shop at the rear ca. 1939 with double leaf, hinged doors with 8-light panels.

### Archaeological Description

The West Hatfield Historic District is located in an area where one ancient Native American archaeological site has been documented and where a high potential exists for additional sites to be found. Seven ancient sites have been recorded in the general area (within one mile) of the district. Documented sites are located on the floodplains and adjacent terraces of the Mill and Connecticut Rivers. Most sites lack interpretative information beyond locational characteristics. Site 19-HS-31, listed as a small camp with chipping debitage, may extend into the western part of the district in the vicinity of Running Gutter Brook, however, a site examination has not been conducted for the site and its boundaries are unknown. Information from several sites in neighboring National Register districts in Hatfield indicates the presence of a wide variety of site types and occupational periods extending from the Late Archaic through Late Woodland periods. During the Contact Period, the Hatfield locale was inhabited by the Capawonks, a subgroup of

(continued)

**United States Department of the Interior**  
**National Park Service**

**National Register of Historic Places**  
**Continuation Sheet**

**West Hatfield HD**  
**Hatfield (Hampshire), MA**

Section number   7   Page   5  

---

the Norwottucks. A rumored Native American settlement from this period is reported between Elm Street and the Connecticut River roughly east of the district. Elm Street, which roughly follows the course of the Connecticut River east and south of the district, is also reported as a Native American transportation corridor, including a trail located parallel with the Connecticut River. In 1657, colonial settlers purchased 157 acres of the Capawonk Meadows, in what is now Hatfield, from Native Americans.

The physical characteristics of the district are favorable for many types of ancient Native American sites. The West Hatfield Historic District is located in the southern portion of town and includes an area represented by alluvial floodplain. Most areas of the district are well drained, and include level to moderately sloped topography within 1,000 feet of Running Gutter Brook, a tributary of the Mill River. Hatfield is located within the Connecticut River drainage. Given the high range of ecological diversity within close proximity (rugged uplands to the west to lowland bogs and river channels south and east of the district), this portion of Hatfield would have been extremely attractive to Native people for both settlement and resource gathering activities. While comprehensive archaeological surveys are lacking for the Hatfield area, surveys in the town of Hadley on the eastern side of the Connecticut River, opposite Hatfield, can be used as a basis for projecting site densities in the Hatfield locale. In that study, Dincauze (1978) identified 73 sites in that town with the highest site densities in the vicinity of the Connecticut River tributaries. In Hatfield this pattern may be repeated in the general area of the West Hatfield Historic District area where Running Gutter Brook, the Mill River, the Connecticut River, and floodplains are present. Recent collections research in the general area (Johnson 1985) has added considerable cultural and temporal specificity to known sites in the Hatfield and Hadley locale. Collections research indicates that type artifacts diagnostic of the Late Archaic and Woodland, and especially the Late Woodland Periods, are the most frequently represented on sites in the town. Sites belonging to the Middle Archaic Period have also been recorded. Given known archaeological information, locational characteristics for the area, and the presence of one recorded site, The presence of ancient Native American sites is documented in the district and a high potential exists for additional sites to be found.

There is also a high potential for locating significant historic archaeological remains within the district. The West Hatfield area was originally laid out as common land and settled later than the Main Street/Elm Street locale. Actual settlement occurred during after West and Bridge Streets were in place from 1820-1830. Few early farmsteads can be identified from this period since the 1830 map did not indicate houses. Additional documentary research combined with

(continued)

United States Department of the Interior  
National Park Service

National Register of Historic Places  
Continuation Sheet

West Hatfield HD  
Hatfield (Hampshire), MA

Section number 7 Page 6

---

archaeological survey and testing may identify structural remains of homesteads, outbuildings and occupational related features (trash pits, privies, wells) from the dispersed early 19<sup>th</sup> century settlement that occurred in the district not extant today. Later settlement in the district is more easily documented as a result of Luther Wells 1909 description of West Hatfield's houses approximately 70 or 80 years after settlement began. Structural evidence may survive from the Strong House, now gone, built about 1840 on the lot of 2 Linseed Road. Similar evidence might also survive from the Hastings House built at 122 West Street in ca. 1850 and the Abraham Billings house built at the corner of Church and West Streets. Both houses were moved outside the district in the late 19<sup>th</sup>/early 20<sup>th</sup> century. Structural evidence may survive from the Thomas Cutter Farm originally located on Bridge Street, the Deacon Strong originally built at the site of 12 Church Street, and the J.D. Cutter house at the site of 7 Church Avenue. The West Hatfield locale continued to be a sparsely settled agricultural area through the mid-19<sup>th</sup> century with agriculture continuing in importance into the 20<sup>th</sup> century. Structural remains from farmsteads including residences and outbuildings should exist throughout most of the West Street, Linseed Road, and Church Avenue corridors. On Church Avenue, four houses, three barns, three tobacco sorting shops, and two storehouses were destroyed by a major fire in 1913. In addition to potential sites of residential homes, agricultural related barns and outbuildings represent another important potential archaeological resource in the district. Livestock barns may characterize most potential sites of early barns, however, by the latter 19<sup>th</sup> century, tobacco barns were more common. Agricultural related outbuildings represent an important potential archaeological resource type throughout the 19<sup>th</sup> and early 20<sup>th</sup> centuries. Structures related to market garden crops and livestock characterized most potential outbuilding sites through the mid-19<sup>th</sup> century. Some outbuildings might also represent the sites of broom manufacture. After 1860, tobacco related outbuildings began to characterize many outbuildings in the district, especially those related to cash crops or tobacco. Outbuildings destroyed by fire on Church Avenue in 1913 noted above document the potential for structures related to tobacco processing in the district. Occupational related features (trash pits, privies, wells) may represent another important potential archaeological resource in the district with both extant buildings and archaeological sites.

(end)

West Hatfield HD

Name of Property

Hampshire, MA

County and State

**8. Statement of Significance**

**Applicable National Register Criteria**

(Mark "x" in one or more boxes for the criteria qualifying the property for National Register listing.)

- A** Property is associated with events that have made a significant contribution to the broad patterns of our history.
- B** Property is associated with the lives of persons significant in our past.
- C** Property embodies the distinctive characteristics of a type, period, or method of construction or represents the work of a master, or possesses high artistic values, or represents a significant and distinguishable entity whose components lack individual distinction.
- D** Property has yielded, or is likely to yield, information important in prehistory or history.

**Criteria Considerations**

(Mark "x" in all the boxes that apply.)

Property is:

- A** owned by religious institution or used for religious purposes.
- B** removed from its original location.
- C** a birthplace or grave.
- D** a cemetery.
- E** a reconstructed building, object, or structure.
- F** a commemorative property.
- G** less than 50 years of age or achieved significance within the past 50 years.

**Narrative Statement of Significance**

(Explain the significance of the property on one or more continuation sheets.)

**9. Major Bibliographical References**

(Cite the books, articles, and other sources used in preparing this form on one or more continuation sheets.)

**Previous documentation on file (NPS):**

- preliminary determination of individual listing (36 CFR 67) has been requested
- previously listed in the National Register
- previously determined eligible by the National Register
- designated a National Historic Landmark
- recorded by Historic American Buildings Survey # \_\_\_\_\_
- recorded by Historic American Engineering Record # \_\_\_\_\_

**Areas of Significance**

(Enter categories from instructions)

- Agriculture
- Ethnic Heritage/European
- Transportation
- \_\_\_\_\_
- \_\_\_\_\_
- \_\_\_\_\_
- \_\_\_\_\_

**Period of Significance**

- 1830-1959
- \_\_\_\_\_
- \_\_\_\_\_

**Significant Dates**

- \_\_\_\_\_
- \_\_\_\_\_
- \_\_\_\_\_

**Significant Person**

(Complete if Criterion B is marked above)

- \_\_\_\_\_

**Cultural Affiliation**

- N/a
- \_\_\_\_\_
- \_\_\_\_\_

**Architect/Builder**

- N/a
- \_\_\_\_\_

**Primary location of additional data:**

- State Historic Preservation Office
- Other State agency
- Federal agency
- Local government
- University
- Other

Name of repository:

- \_\_\_\_\_

**United States Department of the Interior  
National Park Service**

**National Register of Historic Places  
Continuation Sheet**

West Hatfield HD  
Hatfield (Hampshire) MA

Section number 8 Page 1

---

**Historical Significance**

West Hatfield is significant within the town of Hatfield as a farming area that was relatively late to be settled, beginning in the 1820s, but after the mid-19<sup>th</sup> century and well into the 20<sup>th</sup> century was important for tobacco and market garden production. Both tobacco and market gardening continue.

The area is important to the town as a destination for several ethnic groups that maintained their cultural identity by living in proximity. From the 1860s European immigrants began to settle in West Hatfield, specifically Germans, who were followed by Polish and Slovakian families from the 1890s through the first decades of the 1900s. Interdependence in agriculture and the building trades, marriage within the European community, and membership in the Catholic and Lutheran churches all supported positive cultural identity in West Hatfield.

West Hatfield takes on a particular character within the town as a transportation corridor. Stage transportation during the early 1800s was carried out in West Hatfield unimpeded, as was Hatfield Center, by the course of the Connecticut River. Beginning in the 1840s, passenger and freight railroad lines were laid through West Hatfield in part because residents of the Center wished to avoid the noise and soot; these new lines provided ready access for farmers to collect and ship agricultural produce. In the early 20<sup>th</sup> century, West Hatfield was the most active part of town as a rail shipping center and major automobile route. It was here that roadside commerce developed. The West Hatfield Historic District as defined reflects the agrarian and commercial aspects of the community; the district retains integrity of location, association, setting, design, feeling, workmanship and materials on the local level and is significant under Criterion A for the themes of agriculture, ethnic heritage, and transportation.

**Federal Period (1776-1830)**

During the first four decades of the Federal Period, growth in Hatfield was concentrated on the town's main thoroughfare connecting the town to Northampton on the south and west, to Whately on the north. In general, Hatfield settlement spread north first and the town's citizens moved to Upper Main Street, Bradstreet, and Whately (all NRDIS). The path of settlement was logical, farmers naturally preferring the rich and more easily cultivated land to that which required more work to prepare and maintain for cultivation. The area of West Hatfield was also less preferable since the Horse Mountains, the range of hills on the west, limited further expansion west.

On the map of 1794 West Hatfield was noted as an area of oak and pine woods, and there was no roadway either county or town, corresponding to West Street. This section of town during the time of settlement had been common land that by

(continued)

United States Department of the Interior  
National Park Service

National Register of Historic Places  
Continuation Sheet

West Hatfield HD  
Hatfield (Hampshire) MA

Section number 8 Page 2

---

the Federal Period had still not been divided and settled. Samuel D. Partridge in 1880 wrote his Recollections, a description of Hatfield houses as he remembered them from 1812. Partridge's memory was so substantial that he was able to follow the town's roads and describe each house and its occupants in succession, yet none of his recollections was in West Hatfield.

Between 1820 and 1830 West Street was in place as a county road; Bridge Street was in place to connect West Hatfield to the Center. It was at this time that settlement of this frontier area began with the Bradfords (farm now gone). The Cutters followed when they left Whately in 1818-20 and were joined by several other families coming to West Hatfield to buy land and establish farms.

### Early Industrial Period 1830-1870

#### *Town Development*

Settlement that began around 1830 was demonstrably slow. The land was described on the map of 1830 as "pine plains one quarter of it is unfit for cultivation timbered with white pine." To prepare this timbered and rockier land for farming required considerable labor. The more desirable common land had been divided already to accommodate the expanding generations of Hatfield's families, and existing farms could no longer be subdivided and support entire families. The choice for those who needed to establish farms was either to undertake the very difficult task of turning less choice areas into farmland, or to leave. By 1830 many young people preferred to strike out for the far west: to New York, Michigan, Indiana and Ohio where land was flat, fertile and less encumbered by the rocks and boulders of New England. Others, however, chose to remain in town and they began to acquire what land was available - in this case, in West Hatfield.

The map of 1830 does not indicate houses, so it is not possible to identify the number, location and owners of these earliest homesteads. The federal census of 1830, however, does list family names that will appear in West Hatfield in later decades: Cutter, Gould, Billings, and Stebbins, among others. While most can't through either maps or censuses yet be directly associated with sites of early homes in West Hatfield, there is one exception: the Lorenzo Cutter House, 33 West Street, ca. 1830 (MHC # 313, Photograph No. 1), which appears to be the district's oldest house.

Between 1845 and 1850 immigration from Ireland and Canada begins to show up on the town's vital records through births, deaths, and marriages. Between 1845 and 1848, many Irish immigrants came to Hatfield to work on construction of the Connecticut River Railroad from Northampton to Greenfield, and they stayed to work as farm laborers. Canadians more often came to the town to work in agriculture and specifically there were many who were highly skilled in broom making. They were drawn by the town's broom industry that had developed considerably since its beginnings in 1816.

(continued)

United States Department of the Interior  
National Park Service

National Register of Historic Places  
Continuation Sheet

West Hatfield HD  
Hatfield (Hampshire) MA

Section number 8 Page 3

Through the 1850s members of these two immigrant groups lived in boardinghouses or boarded with farm families in Hatfield Center and the Elm Street area where the largest farms were concentrated. They do not appear to have chosen West Hatfield. Rather, West Hatfield in the 1840s and 1850s was slowly growing with English descendents. In addition to Lorenzo Cutter, Rowland and Marilla Stebbins of the ca. 1840 Stebbins-Englehardt House, 129 West Street (outside the boundaries of the nominated district) were early arrivals. Isaac Sampson, and Miranda and Parmenus Lysander Strong also built at this time on West Street. The Sampson House at 53 West Street was built ca. 1840 (also outside the boundaries). The Strong House was a small house on the lot of 2 Linseed Road, which they built at the time of their marriage in 1840. That first Strong House is now gone, but about five years later E. Phelps Billings built the Billings-Strong House, 2 Linseed Road, ca. 1845 (MHC #307, Photograph No. 4) on the same lot, and eventually Miranda and Parmenus bought and moved into it. The corner of West Street and Linseed Road was to have members of the Strong family living there for so long that it became known as Strong's Corner.

Within a decade the West Hatfield cemetery on West Street was established and stones recording deaths going back to 1818 were set in it. Two other houses went up about the same time the cemetery was established, the Smith-Bruscoe House, 108 West Street, ca. 1850 (MHC #321), and the Lyman Hastings House, 144 West Street, ca. 1850. [The Hastings House was moved to its current location from the site of 122 West Street after 1910.]

At least one house built during the period was speculatively built, which suggests that the market for housing was indeed increasing. The Fitch-Korza House, 23 West Street, ca. 1850-60 (HAT 306, Photograph No. 5), was built by the brothers John T. and George C. Fitch. The brothers were a formidable pair in Hatfield's economy as cattle and tobacco farmers, investors, lumbermen, and speculative house builders. Much of the success was due to their ability to support one enterprise with other of their enterprises. The Fitch brothers were particularly active in town on Elm and Chestnut Streets but did not miss opportunity here on West Street. Farmers E. A. Dickinson, Austin Abels and his son Nathaniel Abels were among its early occupants. They were followed by Louisa and Melvin Bradford, and John and Nellie Korza, who also were farmers.

Abraham Billings, who had taken part in the Revolutionary War from Hatfield, built a 1½ story, center chimney, cape form house at the southeast corner of Church and West Streets (moved to 113 Bridge Street in 1888 outside the district), and Mrs. Alonzo Dennis, whose husband had died of disease in the Civil War, built the Mrs. Dennis-John Osley House at 45 West Street, ca. 1880.

(continued)

United States Department of the Interior  
National Park Service

National Register of Historic Places  
Continuation Sheet

West Hatfield HD  
Hatfield (Hampshire) MA

Section number 8 Page 4

A significant event in the development of West Hatfield took place in this period. In the 1840s, the town voted to allow the Connecticut Valley Railroad to pass through town, with the provision that it be kept at a distance of at least two miles from the Center. West Hatfield fit the town's specifications for location, and the railroad's placement there with depots in North Hatfield and West Hatfield (now gone) was to have both positive and negative repercussions into the 20<sup>th</sup> century.

On the positive side, the railroad drew commercial activity to the area, as it was here that freight was exchanged, agricultural products were brought for shipment and support businesses grew up. But its location also set a precedent when it came time to lay out additional transportation routes through Hatfield. Over time, as a result of the decision of 1840, the west part of town became a transportation corridor for railroad and automobiles and finally in the 20<sup>th</sup> century was physically separated from the rest of Hatfield by an interstate highway.

The atlas of 1860 shows that despite new roads and a growing population elsewhere in town, West Hatfield remained a sparsely settled agricultural area. There were more than a dozen houses widely spaced along West Street. Bridge Street was extended as today's Church Avenue to get produce from the Center to West Hatfield's depot, and Linseed Road was in place. Some of the visible growth in West Hatfield was due to German immigration that was in progress by 1860. Although the actual number of German immigrants was smaller than that of Irish and Canadians in Hatfield, most settled in West Hatfield and it is from this point that immigration has a distinct effect on the district. German integration into the Hatfield economy was somewhat different than that of the preceding Irish and Canadians. Rather than coming as single laborers who boarded with Yankee farmers until they had saved enough for land purchase closer to the Center, the Germans more swiftly moved to owning their own small farms. They stayed shorter periods with relatives or friends, invested in property, and assembled farms as they became available in West Hatfield. Among the first Germans to West Hatfield was George Bitner who bought the Stebbins-Englehardt House in the 1860s. One Canadian who did settle in West Hatfield was Anthony Bolack who briefly lived in the Isaac Sampson House in the early 1860s before he died in the Civil War at Brasche City, Louisiana.

A number of West Hatfield men fought in the Civil War. Besides Bolack, Alonzo Dennis was part of Co. B 31<sup>st</sup> Mass infantry and he died at Fort Jackson in Louisiana. Both men died of disease. Alvin Strong, son of Miranda and Parmenus Strong of 2 Linseed Road fought with Company K, 52<sup>nd</sup> Regiment, M.V.M. and returned to operate a lumber mill on Linseed Road. The two sons of Rowland and Marrilla Stebbins from 129 West Street were in the war. Judson was in Company C, 10<sup>th</sup> Regiment of the M.V.M. and Segar was in Company G, 37<sup>th</sup> Regiment of the M.V.M.

New families in West Hatfield meant more children, and in 1861 the first West Hatfield school was built on the site of 60 West Street.

(continued)

United States Department of the Interior  
National Park Service

National Register of Historic Places  
Continuation Sheet

West Hatfield HD  
Hatfield (Hampshire) MA

Section number 8 Page 5

---

*Agriculture*

West Hatfield farmers grew the same crops and raised the same livestock as the rest of Hatfield's farmers. They kept cows, pigs, poultry, and sheep, raised the crops to support them, grew for themselves and introduced market garden crops to their rotations. As cash crops during the period began to supplant acreage used for hay, farmers reduced their dairy and livestock herds accordingly. Market garden produce was traded as a cash crop in Springfield, Chicopee, and Holyoke, but broomcorn was the first cash crop to be grown extensively. Between about 1830 and 1860 broomcorn flourished, then tobacco dominated after 1860. Acreage in West Hatfield was ample, if not as extensive as Bradstreet, the Center and Upper Main Street; so tobacco and broomcorn were raised in smaller amounts of 1-10 acres.

*Architecture*

The Lorenzo Cutter House, 33 West Street, ca. 1830 (MHC #312, Photograph No. 1), the Thomas Cutter Farm on Bridge Street (now gone) and the Billings-Strong House, 2 Linseed Road, ca. 1845 (MHC #307, Photograph No. 4) were three of the more substantial house forms constructed in West Hatfield during this period. They were 2 1/2 story houses, five bays wide and one to two bays deep under side-gable roofs. They were accompanied by large livestock barns and, as the period unfolded and the agricultural economy shifted to cash crops, there were tobacco barns and sorting shops as part of the mix of agricultural outbuildings.

As West Hatfield was late in establishment, we have a better, if imperfect, picture of what has been lost in the district. The Luther Wells description of West Hatfield's houses written in 1909 depicts the area only 70 or so years after settlement had begun. His description makes it possible to see that what we have remaining today in West Hatfield is representative of the simple form of housing that constituted the majority of buildings constructed in the Early Industrial Period. Unlike East Whately a few miles north that was settled in the Federal Period with numerous 2 1/2 story houses, most of the houses constructed in West Hatfield were small, and modest in scale and design. They were one-and-a-half stories in height, and there is no indication today that they were stylistically developed. Pragmatism dictated that with limited funds, a combination of small houses but a full complement of barns and outbuildings were the norm for West Hatfield. An example of such a farmstead is the Fitch-Korza House, 23 West Street, ca. 1860 (MHC #306, Photograph No. 5) with its small 1 1/2 story house, livestock and tobacco barns.

(continued)

United States Department of the Interior  
National Park Service

National Register of Historic Places  
Continuation Sheet

West Hatfield HD  
Hatfield (Hampshire) MA

Section number 8 Page 6

---

**Late Industrial Period 1870-1915**

*Town Development*

The Late Industrial Period was one of concentrated change in West Hatfield. German immigration continued. Among the people who came at that time were Peter Saffer (house now gone), Adam Doppman, and George and Sidonia Vollinger, (72 West Street). Other German families who were to live for generations in the area were the Chandlers (42 West Street, 1914), Betsolds (122 West Street) and Liebls (Betsold-Liebl House). Charles and Anna Chandler Casten built the house at 71 West Street ca. 1905. Central European immigration began in 1890s and Polish and Slovakian names such as Korza and Osley appear in West Hatfield from this date. John and Nelly Korza were among the Polish immigrants to West Hatfield from about 1890. They lived in the Fitch-Korza House at 23 West Street, (ca. 1860, MHC #306, Photograph No. 5) - John Korza was a farm laborer.

New families were not exclusively immigrants, however. A double house was constructed on the site of 12 Church Avenue (now gone) by Deacon Alvin Strong for his sons and daughters-in-law Eugene and Anna Knight Strong and Edson and Harriet Bardwell Strong. J. D. Cutter built a house on the site of 7 Church Avenue (burned down in 1913). Reportedly, this had been the site of the poor farm before the fire.

The area of Strong Corner was active at this time with house construction, but also with construction of West Hatfield's second institution (following the West Hatfield School), a satellite of the Congregational Church. In 1888 West Hatfield members of the First Congregational Church formed the Union Chapel Society and in the following year built the Congregational Chapel at 11 Church Avenue, 1889 (MHC #305, Photograph No. 6) to give them a church closer to home than Main Street in the Center. The first minister was Rev. Woods, who was the minister of the First Congregational Church on Main Street and preached also in North Hatfield. Treasurer of the Union Chapel Society was Alvin Strong, who lived at 2 Linseed Road across the street. Among the donors were residents of Laurel Park in Northampton, as well as Congregationalists from other towns. To make way for the chapel, first, however, the Abraham Billings-Alonzo Dennis House was moved to the other side of the railroad tracks and attached to the passenger station. It was used as a railroad tenement or rental house for railroad employees, as well as a passenger station. Now at 113 Bridge St., it lies outside the boundaries of the proposed district.

West Hatfield's first post office was opened in 1889; its postmaster was Melvin P. Bradford, who lived on West Street. According to an article in the Northampton Gazette of July 23, 1889, it was to be called the Laurel Park post office for an undisclosed reason. The post office may have been in either Bradford's home, as was customary, or at the West Hatfield rail depot. By 1898 it was located in the depot and the new postmaster was Silas Dwight. Isabel Dwight followed her husband as postmaster in 1909 and served until 1918.

(continued)

United States Department of the Interior  
National Park Service

National Register of Historic Places  
Continuation Sheet

West Hatfield HD  
Hatfield (Hampshire) MA

Section number 8 Page 7

---

During this period, utilities were introduced to communities throughout the Connecticut River Valley, including Hatfield. In 1895 a public water supply was created by damming up Running Gutter Brook for a reservoir about a mile north of Alvin Strong's sawmill on Linseed Road. Water lines were then laid from the reservoir through West Hatfield to Hatfield Center. Sewers and electricity were installed, first to the town center and slightly later to the less densely settled West Hatfield. Telephone lines in 1906 were simultaneously installed townwide.

The Late Industrial Period saw transportation improvements on a grand scale. The first improvement was that a second railroad through the town was constructed in 1890. The New York, New Haven, & Hartford Railroad laid tracks for their line alongside those of the Connecticut River Railroad. The Cutter farm (now gone) was moved west several hundred feet to make room for the tracks. This was a passenger and freight line that used the West Hatfield depot and brought more activity to the district. The New York, New Haven, & Hartford Railroad extended the market reach for farmers and shortened delivery time for their tobacco and onions. The Connecticut Valley Railroad about the same time was bought out and became the Boston and Maine Railroad.

In 1900, the streetcar came to Hatfield, running between Northampton and Bradstreet. It was extended to Greenfield in 1903, but West Hatfield was not included in any part of the route layout. Rather, it was the advent of the automobile and car travel on Pantry Road, or West Street, that made an impact on West Hatfield and came to affect much of the appearance of the district. One of the attractions for car travelers was tourism, and the active old lead mine (now filled in) behind the Vollinger-Coventry Store at 139 West Street at the foot of the Rocks was a destination. Technically barium sulfate rather than lead mine, it produced isinglass used for sully windows and cast-iron stove doors, and tourists came up West Street to visit.

In 1918 the West Hatfield Post Office was moved from the depot to its own space in an addition to the west end of the Thomas Cutter Farm on Bridge Street (now gone). Bernice Cutter became postmaster and continued this position until 1944. When Calvin Coolidge returned to Northampton after having served as President, he chose as his driver John Bukosky, who lived at 113 Bridge Street in a building that had been the former depot and railroad tenement house.

The installation of water lines from the Running Gutter Brook reservoir meant that fire fighting was given a merciful boost wherever water lines were present. Those in West Hatfield were not enough, however, to squelch a fire in 1913 that destroyed much of Church Avenue. The fire is important as a date for reconstruction of several houses, including the Strong-Osepowicz House, 6 Church Avenue and its livestock barn, and the house of Eugene Strong and his sister Mabelat 12 Church Avenue. Its also important because newspaper accounts give us information on what buildings had been there in 1913. For example, one account mentions that four houses, three barns, three tobacco sorting shops, and two storehouses were burned down, confirming the fact that tobacco sorting shops were more in number than is evident today. It is also clear from news accounts that there were several companies located in the storehouses and barns on this part of

(continued)

United States Department of the Interior  
National Park Service

National Register of Historic Places  
Continuation Sheet

West Hatfield HD  
Hatfield (Hampshire) MA

Section number 8 Page 8

---

Church Avenue and Bridge St., right at the West Hatfield Depot at the intersection of two railroad lines. These included the H. D. Smith coal sheds, the Porter Machine Company storehouse, and the Bowker Fertilizer Company storehouse. One farmhouse, the Thomas Cutter House (where the Post Office was located) was saved by its slate roof, and the Cutter barns were spared as well, only to be razed for the construction of I-91 about 50 years later. A business near the freight station on Bridge and Dwight Street that was spared was the Webster Box Company. Originally a tobacco sorting shop owned by the Cutters, it was sold ca. 1895 to Merton Webster, who started a tobacco box manufacturing company and the Webster & Webster Fence Company. Together the two businesses were major employers of West Hatfield men. Although it is separated from the district by I-91, the now-vacant box factory was long considered a West Hatfield business.

*Agriculture*

At the beginning of the period, there was a renewed interest in dairy production in Hatfield and dairy herds were accompanied by increasingly large herds of beef cattle, pigs and chickens. With townwide milk production on the rise, it was in the farmers' best interest to centralize collection and distribution to help them realize a higher profit. Consequently, in 1878 the Hatfield creamery was formed, managed by one-time West Hatfield resident Nathaniel Abels. The creamery on Main Street prospered until about 1890, when farmers began to convert their acreage to tobacco growing and their barns to drying sheds.

Tobacco had been in production since the 1860s, but during the late 19<sup>th</sup> century, the market grew for Hatfield's fine, field-grown tobacco, and the district's tobacco farmers were part of the town's phenomenal production. Commercial tobacco companies came to town to take part in and organize production, and they did so by contracting with farmers. Working on contract simplified the process of marketing and distribution for those farmers who worked for the companies and acted to equalize their incomes year-to-year. West Hatfield's farmers, who grew in smaller quantities, did not take part in this otherwise pervasive system. Rather, they remained independent and either processed their crops themselves or sent them to locally owned shops for processing.

The second crop that grew in abundance in Hatfield's soil was onions, first grown in commercial quantities around 1890-1900. By 1910 the town was producing 54% of Hampshire County's onions and led the state in production. The crop persisted as an important part of the farm economy until after World War II. For West Hatfield's farmers, getting the two crops to market was facilitated because they could quickly get to and efficiently ship from the West Hatfield freight depot.

A factor that allowed the town's farmers to produce tobacco and onion crops in ever-greater quantities was mechanization of farm activities. Tractors alone could greatly reduce the time it took to plant and harvest, while also allowing farmers to get more crop per acre. Most of West Hatfield's farmers began to acquire tractors during the Late Industrial Period, although the use of horses was to continue for decades.

(continued)

United States Department of the Interior  
National Park Service

National Register of Historic Places  
Continuation Sheet

West Hatfield HD  
Hatfield (Hampshire) MA

Section number 8 Page 9

---

*Architecture*

West Hatfield had its quota of farmer/builders who were responsible for much of the area's construction, and they were largely within the German community. Frank L. Betsold, George Bitner, and John Bitner were all listed as carpenters in the 1915 street directory. George Bitner worked both as a tobacco farmer and carpenter, and construction of the four tobacco sheds at his home at 129 West St. is attributed to him, ca. 1900. The Northampton Gazette of December 18, 1888 gives us a glimpse of the level of physical labor that these farmer/builders achieved. On one Saturday, the newspaper reported, George Bitner hewed 100 railroad ties, and then went on to help his neighbor Alvin Strong chop and score wood for his lumberyard. Bitner and Betsold at times worked together. As thrifty, pragmatic farmers they built simply but well. The 1½ story, gable and wing, Merle Strong House and Post Office, 38 West Street, ca. 1900 (MHC # 313, Photograph No. 7), whose builder was not recorded represents a conservative house form that was repeated many times.

**Early Modern Period 1915-1940**

*Town Development*

The age of automobile travel thoroughly altered the rural landscape of West Hatfield by the addition of commercial, travel-related development along Routes 5 and 10, or West Street. At first residential buildings were adapted for commercial use. Grace Mullen ran a tearoom at the Billings-Strong House, 2 Linseed Road, ca. 1845 (MHC #307, Photograph No. 4) in the 1920s and 1930s. The teahouse served people traveling through West Hatfield but also sold penny candy to the neighborhood children. Places like the teahouse provided opportunities for work other than farming and working in the tobacco-sorting shops.

In 1924 Hatfield's trolley tracks were taken up as people abandoned the streetcars for their automobiles. Drivers followed the shortest route north and south between Northampton and Greenfield, which was through West Hatfield on West Street. Straddling the border between Hatfield and Northampton, the first gas station in West Hatfield to serve them was the Labbee Service Station, built at 881 King Street (Northampton) in the 1920s on Cutter land. The gas station launched the roadside commercial culture that was in full swing on West Street by the 1930s. It was given a boost when the New York, New Haven & Hartford Railroad was shut down in 1930 and truck transport replaced railroad freight. The appearance of Howard Johnson's Restaurant at 16 West Street in 1938, built by Hatfield resident Oliver Blyle on Cutter land, underscores the volume of traffic that West Hatfield was attracting (the former Howard Johnson's has been vastly altered and is excluded from the boundaries of the present nomination).

(continued)

United States Department of the Interior  
National Park Service

National Register of Historic Places  
Continuation Sheet

West Hatfield HD  
Hatfield (Hampshire) MA

Section number 8 Page 10

---

*Population*

West Hatfield's ethnic composition grew in complexity during the 1920s and 1930s. Slovakian and German families farmed but also provided the town with skilled members of the builders' trade. Frank Betsold and his sons were active constructing tobacco sheds and barns. An example of their work is the well-designed garage/shop at Lorenzo Cutter House, 33 West Street (MHC #312, Photograph No. 1), built in the 1920s. Many of the town's tobacco barns were their work. In 1939 Frank Betsold built his last house, the George Betsold House, 29 West Street (MHC #311), an English Cottage-style house that he felt was his best work. Betsold was helped by German-born George Bitner, who with John Bitner continued to be active residential builders throughout Hatfield.

As Slovakian families arrived and grew, they rented the Congregational Chapel to hold Lutheran services, beginning in 1907. In 1928, Slovakian Lutherans had gained sufficient numbers and strength to purchase the Congregational Chapel from the Union Chapel Society, which then dissolved. Renamed the Holy Trinity Slovak Lutheran Church of West Hatfield, it was re-dedicated in 1928. Michael Havlir was chosen minister in 1930 and was there for 55 years, said to be the longest service for a Lutheran pastor in the United States. At the outset of his service, the conscientious Havlir learned to speak Slovak so he could give a morning service each week in the first language of his congregation.

World War II was felt among West Hatfield's ethnic communities, the Germans, Polish and Slovaks. By war time German families in West Hatfield included the Betsolds, Deinleins, Stengleins, Gollers, Stoddards, Bitners, Vollingers, Liebl, Chandlers, Dippolts, Englehardts, and Doppmans.

*Architecture*

There was not a great deal of construction during this period, economically dominated as it was by the Depression. What was constructed continued to be modest and practical. The nominated district includes one example of the American foursquare house at the Lutheran Parsonage, 7 Church Avenue. Built by the congregation in 1931, the parsonage is substantial in materials but unadorned by decorative features.

*Agriculture*

During the Early Modern Period, West Hatfield's farmers continued raising tobacco and market garden crops, increasing the quantities of potatoes and onions. Taking advantage of their location on the busy state highway, farmers sold their vegetable in farmstands along West.

(continued)

United States Department of the Interior  
National Park Service

National Register of Historic Places  
Continuation Sheet

West Hatfield HD  
Hatfield (Hampshire) MA

Section number 8 Page 11

---

What set West Hatfield's German farmers apart to a large degree was their cooperative form of farming that was at its apex during this period. One of the primary benefits of farm families working together was that they made up an experienced group. Family members knew how to use hoes, how to plant, top and sucker the plants properly. Beyond experience, they were also always there because they had a vested interest in working, unlike hired laborers from outside the community who often had neither the know-how, nor the sustained interest. Farmers were always fighting the weather and elements, and being able at harvest time to count on a team of ten to twelve experienced hands to get tobacco in the barn, off the poles, its leaves stripped and hung was very important.

In early spring, each farmer raised his own seedlings in cold frames known as tobacco sash. Then at planting time the fields of one family per day or two were planted by the team. Horse-drawn, then tractor-drawn tobacco setters were used. On the back of the setter two people would do the actual setting out of the plants and between them a water barrel was placed that was operated by a plunger to give each seedling its dose of water. Setters are still used today, but rather than a single row, they are 6-row setters and can do 8-10 acres/day. Harvest time was naturally staggered according to when crops were planted, so the same sequence of farms was generally followed for harvest.

Alongside the cooperative farming, another form of labor existed: men who "worked out." These were generally farmers with small acreage who worked their own land and hired themselves out to work for larger farms. Three brothers, Eddie, Anthony, and Joe Osepowicz (Strong-Osepowicz House, 6 Church Avenue, 1913), were among those who labored in this way. Their wives worked out as well, as house cleaners, for example, and receptionists. John Osley worked for the Bradfords at the Fitch-Korza House, 23 West Street; while on his own land down the road, Osley, a Slovak, raised tobacco and onions. Joseph Chandler of 42 West Street and Joseph Goller were among West Hatfield's Germans who raised tobacco and worked out too. Some women went to work in the Smith College kitchen and doing house cleaning in Northampton. Some small farmers also worked out, particularly in the winters, at the Webster Box Company and the Webster & Webster fence and coal company on Bridge Street – outside the district.

During the winter almost everyone, men and women, farmer or farm laborer, worked in tobacco shops. The system continued of selling their tobacco to independent tobacco shops as distinct from contracting with the large tobacco companies. John Strong's tobacco shop, 2 Linseed Road, ca. 1900 was the largest shop employing many West Hatfield people in the winter; William Cutter was the boss of the shop seasonally. There were smaller family sorting shops too, none of which remain. But in large and small shops the work was the same: workers sorted, sized, boxed, and shipped tobacco. A typical working day for a West Hatfield farmer was to milk his herd of nine to eleven cows in the morning, walk up to Strong's tobacco shop for 6 a.m. opening, work until 5 p.m., then walk home and do the chores.

(continued)

United States Department of the Interior  
National Park Service

National Register of Historic Places  
Continuation Sheet

West Hatfield HD  
Hatfield (Hampshire) MA

Section number 8 Page 12

---

**Modern Period 1940-present**

*Town Development*

By 1940 Hatfield had a strong ethnic mix. Religion provided a community focus and helped to sustain cultural identity, the Germans and Polish were Catholic, the Slovaks were Lutheran. For many, this persisted as a mark of difference for several decades in the Modern Period. Closing of the West Hatfield school in 1941 may have contributed to the demise of this ethnic separation as students were bussed into Main Street or to the Hill School where distinctions were harder to maintain.

Certainly more of the world was coming to West Hatfield after 1940 and they were coming in cars looking for entertainment and a place to stay on long trips. Cabins, motels, restaurants, a bowling alley, and a driving range were all amenities in the Strong Corner vicinity during the period. The Post Office moved to West Street: from 1944 to 1984 it was at the Merle Strong House, 38 West Street (MHC #313, Photograph No. 7) where Strong's daughter, postmistress Marjorie Strong Kowalski, lived and worked.

In 1947 the amount of traffic on West Street led to its being widened and designated State Highway, Route 5-10. Widening the road meant that the Lutheran Church needed to be moved in 25-30' from West Street. The congregation took the opportunity to expand, providing a new cellar with space for activities, an enlarged sanctuary and new altar. Widening of West Street had had a minimal impact on West Hatfield unlike construction of I-91 in 1964. The highway followed the bed of the New York, New Haven, & Hartford right-of-way and had a devastating effect on West Hatfield, destroying farms and effectively cutting off this part of town from the rest of the community. One of the oldest farms in West Hatfield, the Thomas Cutter Farm on Bridge St., was demolished. What was not demolished was often severely compromised. A house that clearly demonstrates what happened to West Hatfield when I-91 went through is the George and Sidonia Vollinger House, 72 West Street: it is now within a few yards of the interstate, its tobacco barn cut in half to accommodate the highway. Also outside the nominated district, the Smith-Bruscoe farm at 108 West Street was divided by the highway, as were the Miller-Stenglein-Shea House at 104 West Street and the Betsold House at 122 West Street.

*Agriculture*

Onion production declined precipitously townwide due to disease that struck the sets during the 1930s, picked up again in the 1940s and lasted until the 1970s. Hatfield's farmers turned to potatoes, cucumbers, and corn after World War II. These three crops plus grain have been grown consistently since the 1940s. Shade tobacco was grown in quantities after World War II as well and it was shipped from West Hatfield. The shipping continued to be an important part of the district's economy.

(continued)

United States Department of the Interior  
National Park Service

National Register of Historic Places  
Continuation Sheet

West Hatfield HD  
Hatfield (Hampshire) MA

Section number 8 Page 13

In the early 1970s, Havana Seed and broadleaf tobacco in open fields and shade tobacco under netting were the favored crops. A shift in the industry to homogenized tobacco, however, cut off demand for Hatfield's finer grade of tobacco, and farmers turned to cultivating potatoes, grain, and corn in larger quantities. They have added asparagus, cabbage, lettuce, carrots and beans, beets, squash, tomatoes, peppers, sweet corn, and strawberries. Christmas trees and ornamental greens are grown and fashioned by the Englehardts.

*Architecture*

Roadside commercial architecture in West Hatfield followed the patterns that had been established throughout the country as early as the 1920s. Ease of getting into the store or restaurant or gas station by car was paramount, which meant that commercial buildings, such as Howard Johnson's, were set back from the road to provide parking in front or, in the case of Labbee's service station, customers could wheel in to the gas tanks and get back on the road without interruption. By 1951 this was a well-established practice and the Jenny Lind Motel was set far off the road and designed so that motorists could drive up to the office, register, and park in front of their units. Similarly, the 1959 Bowling Alley had large areas in front and at each side for parking.

Meanwhile during the 1940s and 1950s, West Hatfield maintained its balance of agriculture and commerce and there was very limited residential infill. Simplicity continued to characterize the homes that were built in the area, including ranch-style and other suburban dwellings, set back from the road with front lawns. Beginning about 1965, the balance between agricultural and commercial buildings began to tip towards the commercial on the southern part of West Street between Labbee's Service Station and the Lutheran Church. Road-related service businesses have since the 1960s been joined by industrial buildings such as the Osley Construction Company, the two buildings of the Industrial Sheet Metal Company, and most recently, Mill Valley Molding, Inc. The residential-commercial mix persists to the present day.

*Preservation Concerns*

As has been suggested above, the principal preservation concern for the district is the loss of balance between agriculture and commerce that has existed since the early 1920s. Farmland is constantly under pressure for development. With the introduction of industrial, as distinct from commercial uses, the residential and farm outbuilding scale of buildings--whose only exception until the 1970s was the Bowling Alley-- is threatened. The industrial buildings are large scale, follow no regular alignment along West Street, and their forms do not fit into the larger context of residential and commercial buildings. Modern construction materials such as metal siding and artificial stone also differentiate these buildings. Modern construction materials also threaten the older buildings. The use of vinyl siding and replacement windows on pre-1960 buildings, including the Lutheran Church, compromises their character and is a threat to material integrity of the district. The extensive reach of new construction as infill amongst older buildings, as well as inappropriate changes to some historic buildings in the area, has necessitated a far smaller National Register district in West Hatfield than would have been possible even a decade ago.

(continued)

United States Department of the Interior  
National Park Service

National Register of Historic Places  
Continuation Sheet

West Hatfield HD  
Hatfield (Hampshire) MA

Section number 8 Page 14

---

*Preservation Activities*

The Hatfield Historical Commission has been an activist preservation group for about 30 years. The West Hatfield Historic District is the seventh historic district proposed for the town. The Commission has preserved a tobacco barn through the Massachusetts Preservation Program Fund and turned it into a notable agricultural museum. They have documented the town's properties and its history on video, and among many other activities have advocated for the preservation of several of the town's most important buildings, including the First Congregational Church and the Memorial Library. In West Hatfield they have emphasized that the significance of the district must be recognized as part of the whole town's history. The important themes that the district represents for the town of Hatfield are the strength of its immigrant groups, the history of small-scale farming operations, the transformation wrought in a community by transportation changes, and a tradition of vernacular housing.

**Archaeological Significance**

Since patterns of ancient Native American settlement in Hatfield are poorly understood, any surviving sites could be significant. Several prehistoric sites have been recorded in Hatfield; however, the lack of systematic site examinations and comprehensive town wide archaeological surveys has resulted in little detailed information for the area. Because the town has remained primarily a farming community and resisted intensive development, it is highly likely that significant prehistoric archaeological sites survive. Regional information indicates that surviving sites may date from the Paleoindian (10,000-12,000 B.P.) Period to Native Contact with Europeans in the 17<sup>th</sup> century. Sites dating from the Middle Archaic through Late Woodland Periods have been documented in the town. These sites may provide a basis for reconstructing both environmental change within the mid-Connecticut River Valley and the process of cultural adjustment as Native people adopted their settlement and subsistence strategies in response to that change. Archaeological data and secondary sources indicate that Native American resources exist in the district and general area and that much of the area was cleared by Native Americans for farming. Archaeological survivals in the district locale can help to clarify the importance of this area relative to other Native settlements elsewhere along the Connecticut River.

Historic archaeological resources described above have the potential to provide detailed information on the social, economic and cultural changes that occurred in a village that was designated common land at the time of Hatfield's settlement in the 17<sup>th</sup> century and remained undivided and was not settled until the end of the Federal Period (1776-1830).

Archaeological resources also have a high potential for helping to document the pattern of community development and economic change in the district and town. Documentary research and archaeological testing may assist in documenting the ongoing physical evolution of farm complexes, especially in response to changing agricultural practices, products and

(continued)

United States Department of the Interior  
National Park Service

**National Register of Historic Places  
Continuation Sheet**

West Hatfield HD  
Hatfield (Hampshire) MA

Section number 8 Page 15

---

labor. Few of the small broom manufacturing or tobacco sorting facilities that characterized this period have survived above ground; these could be documented archaeologically. Occupational related features (trash pits, privies, wells), are also likely to occur around standing buildings and on archaeological sites. Careful sampling and the analysis of the contents from these features can assist in detailing the changing economic conditions, shifts in ethnicity and other significant aspects of Hatfield's 19<sup>th</sup> century development.

The analysis of the contents of occupational related features can provide detailed information on the inhabitants of specific residents and, when sampled as a unit on specific ethnic groups and areas of town and the district. During the 19<sup>th</sup> and 20<sup>th</sup> centuries, Irish, French Canadian, German, and Polish immigrants moved to Hatfield, frequently settling in particular areas of town including the district. Analysis of occupational related features associated with ethnic enclaves, households, and boarding houses can help document how these groups adapted to life in the district and how they differed or compared to more traditional inhabitants of English decent. The analysis of occupational related features can also help document industrial growth or manufacturing. Broom, boot and shoe manufacture, which developed in the district in the early 19<sup>th</sup> century and peaked by ca. 1850, and tobacco processing all probably developed as cottage industries. The analysis of occupational related features at residences and farmsteads where these activities took place can provide details relating to their production technologies and the materials used in their manufacture. This analysis can also provide details on the relationship of specific ethnic groups and sexes to trades like broom manufacture and tobacco processing and the role those trades played in the acculturation process of certain ethnic groups. Important information may exist that documents why Irish and French Canadian immigrants did not settle in West Hatfield in the 1840s and 1850s while growth continued with those of English decent.

(end)

United States Department of the Interior  
National Park Service

## National Register of Historic Places Continuation Sheet

West Hatfield HD  
Hatfield (Hampshire) MA

Section number 9 Page 1

---

### Major Bibliographical References

#### Primary Sources

- Cutter, Robert, Oral interviews, 2001-2002.  
Englehardt, Francis. Oral interview, 2001.  
Federal Census, Hampshire County, Hatfield, 1830, 1850, 1860, 1870, 1900, 1910.  
First Census of the United States. 1855, 1865, 1875, 1885, Agricultural Products and Property.  
Greenfield Directory, 1901.  
Hampshire County Suburban Directory, 1918.  
Northampton Suburban Directory, 1909, vol. 1.

#### Maps and Atlases

- "Plan of Hatfield survey'd 1794".  
Morton, Theophilus and Justin Wait. "Plan of the Town of Hatfield, 1830".  
Walling, Henry F. "The County of Hampshire, Massachusetts", New York, 1860.  
Beers, W. "The Atlas of Hampshire County", 1873.

#### Secondary Sources

- Gay, W. B. Gazetteer Hampshire County, Massachusetts 1654-1887, New York, 1887.  
Massachusetts Historical Commission. Reconnaissance Survey Report, "Hatfield", unpublished, 1982.  
\_\_\_\_\_. Historic and Archaeological Resources in the Connecticut Valley, unpublished, 1984.  
Partridge, Samuel Dwight. Reminiscences of Hatfield, Massachusetts As it was in the Early Part of the Nineteenth Century, typescript, 1880.  
Tercentenary History Committee. Hatfield, 1670-1970, Northampton, 1970.  
Visser, Thomas Durant. Field Guide to New England Barns and Farm Buildings, Hanover and London, 1997.  
Wells, Daniel W. Sketch of Homes in Hatfield, Massachusetts, 1816-1909, typescript, 1909.  
Wells, Daniel White and Reuben F. Wells. A History of Hatfield, Massachusetts 1660-1910, Springfield, 1910.  
Wight, Charles Albert. The Hatfield Book, Springfield, 1908.

(end)

West Hatfield HD  
Name of Property

Hampshire, MA  
County, State

## 10. Geographical Data

Acreage of Property 30 acres

### UTM References See continuation sheet.

(Place additional UTM references on a continuation sheet.)

1, 18 694900 4694000  
Zone Easting Northing

3, 18 694420 4693040  
Zone Easting Northing

2, 18 694300 4694000  
Zone Easting Northing

4, 18 694700 4693000  
Zone Easting Northing

— See continuation sheet

### Verbal Boundary Description

(Describe the boundaries of the property on a continuation sheet.)

### Boundary Justification

(Explain why the boundaries were selected on a continuation sheet.)

## 11. Form Prepared By

name/title Bonnie Parsons, Principal Planner, PVPC, with Betsy Friedberg, NR Director, MHC

organization Massachusetts Historical Commission date December 2004

street & number 220 Morrissey Boulevard telephone 617-727-8470

city or town Boston state MA zip code 02125

### Additional Documentation

Submit the following items with the completed form:

#### Continuation Sheets

#### Maps

A **USGS map** (7.5 or 15 minute series) indicating the property's location.

A **sketch map** for historic districts and properties having large acreage or numerous resources.

#### Photographs

Representative **black and white photographs** of the property.

**Additional items** (Check with the SHPO or FPO for any additional items)

### Property Owner

(Complete this item at the request of the SHPO or FPO.)

name multiple

street & number \_\_\_\_\_ telephone \_\_\_\_\_

city or town \_\_\_\_\_ state \_\_\_\_\_ zip code \_\_\_\_\_

**Paperwork Reduction Act Statement:** This information is being collected for applications to the National Register of Historic Places to nominate properties for listing or determine eligibility for listing, to list properties, and to amend existing listings. Response to this request is required to obtain a benefit in accordance with the National Historic Preservation Act, as amended (16 U.S.C. 470 et seq.).

**Estimated Burden Statement:** Public reporting burden for this form is estimated to average 18.1 hours per response including the time for reviewing instructions, gathering and maintaining data, and completing and reviewing the form. Direct comments regarding this burden estimate or any aspect of this form to the Chief, Administrative Services Division, National Park Service, P.O. Box 37127, Washington, DC 20013-7127; and the Office of Management and Budget, Paperwork Reductions Project (1024-0018), Washington, DC 20503.

United States Department of the Interior  
National Park Service

## National Register of Historic Places Continuation Sheet

West Hatfield HD  
Hatfield (Hampshire) MA

Section number 10 Page 1

---

### 10. Geographic Data

#### Verbal Boundary Description

The boundaries for the West Hatfield HD are drawn on accompanying Hatfield assessor's maps 216, 219, and 224.

#### Verbal Boundary Justification

The boundary, as drawn, reflects the historically significant portion of West Hatfield during the period of significance.

(end)

United States Department of the Interior  
National Park Service

## National Register of Historic Places Continuation Sheet

West Hatfield HD  
Hatfield (Hampshire), MA

Section number photo Page 1

---

### List of Photographs

Date: 5 September 2002

Photographer: Bonnie Parsons

Negative location: Pioneer Valley Planning Commission, West Springfield, MA

1. Lorenzo Cutter House, View to northwest
2. Stebbins-Englehardt House, View to northwest
3. Isaac Sampson House, View to northwest
4. Billings-Strong House, View to southeast
5. Fitch-Korza House, View to northeast
6. Congregational Chapel, View to southeast
7. Merle Strong House and Post Office, View to southwest

## WEST HATFIELD HISTORIC DISTRICT DATA SHEET

HATFIELD, MA

Map #	MHC#	Address	Historic Name	Date	Style/Form	Resource	C/NC
		<b>Church Avenue</b>					
219-1		3 Church Avenue	house	1966	cape	B	NC
219-93	HAT 310	6 Church Avenue	Strong-Osepowicz House	1913	Queen Anne	B	C
219-93		6 Church Avenue	livestock barn	1913	utilitarian	B	C
219-93		6 Church Avenue	garage	1913	utilitarian	B	C
219-93		6 Church Avenue	shop	1913	utilitarian	B	C
219-2		7 Church Avenue	Lutheran Parsonage	1931	Neo-colonial	B	C
219-2		7 Church Avenue	garage	ca. 1930	utilitarian	B	C
219-2	HAT 303	11 Church Avenue	Congregational Chapel	1889	Stick Style	B	C
219-92	HAT 305	12 Church Avenue	Eugene & May Strong House	1913	QA/CR	B	C
219-92		12 Church Avenue	shed	ca. 1940	utilitarian	B	C
		<b>Linseed Road</b>					
219-56	HAT 307	2 Linseed Road	Billings-Strong House	ca. 1845	Italianate	B	C
291-56		2 Linseed Road	tobacco sorting shop	ca. 1900	utilitarian	B	C
219-56		2 Linseed Road	carriage house	ca. 1900	utilitarian	B	NC
219-56		2 Linseed Road	repair shop	ca. 1980	utilitarian	B	NC
		<b>West Street</b>					
219-3	HAT 306	23 West Street	Fitch House	ca. 1860	no style	B	C
219-3		23 West Street	tobacco shed	ca. 1941	utilitarian	B	C
219-3		23 West Street	livestock barn	ca. 1941	utilitarian	B	C
219-3		23 West Street	equipment barn	ca. 1980	utilitarian	B	NC
219-58	HAT 311	29 West Street	George Betsold House	ca. 1939	English Cottage	B	C
219-58		29 West Street	garage	ca. 1939	utilitarian	B	C
219-91		32 West Street	Rudison-Routhier Engineering	ca. 1970	utilitarian	B	NC
219-59	HAT 312	33 West Street	Lorenzo Cutter House	ca. 1830	Federal	B	C
219-59		33 West Street	garage/shop	ca. 1920	utilitarian	B	C
219-90		34 West Street	West Hatfield Sandwich Shop	1954	Neo-colonial	B	C
219-60		35 West Street	house	1955	Minimal traditional	B	NC
219-61		37 West Street	house	1958	ranch	B	NC
219-89	HAT 313	38 West Street	Merle Strong House & P.O.	ca. 1900	gable & wing	B	C
219-89		38 West Street	garage	ca. 1940	utilitarian	B	C
219-62		41 West Street	house	1970	cape	B	NC

WEST HATFIELD HISTORIC DISTRICT DATA SHEET

HATFIELD, MA

219-88		42 West Street	Joe Chandler House	1914	no style	B	C
219-88		42 West Street	carriage barn	ca. 1914	utilitarian	B	C

	Contributing	Non-contributing
Bldgs.	23	8
Structures	0	0
Objects	0	0
Total	23	8



# United States Department of the Interior

NATIONAL PARK SERVICE  
1849 C Street, N.W.  
Washington, D.C. 20240

IN REPLY REFER TO:

## SUPPLEMENTARY LISTING RECORD

NRIS Reference Number: 05000079

Date Listed: 2/24/2005

Property Name: West Hatfield Historic District

County: Hampshire State: MA

Multiple Name

-----  
This property is listed in the National Register of Historic Places in accordance with the attached nomination documentation subject to the following exceptions, exclusions, or amendments, notwithstanding the National Park Service certification included in the nomination documentation.

Patrick Andrews  
Signature of the Keeper

2/24/2005  
Date of Action

-----  
Amended Items in Nomination: This SLR amends the period of significance. In section 8 of the form, the period of significance is defined as ending in 1959. The MA SHPO has confirmed that this is an error. In consultation with the state, the period of significance is now defined to end at the 50 year point (1955).

### DISTRIBUTION:

National Register property file

Nominating Authority (without nomination attachment)

UNITED STATES DEPARTMENT OF THE INTERIOR  
NATIONAL PARK SERVICE

NATIONAL REGISTER OF HISTORIC PLACES  
EVALUATION/RETURN SHEET

REQUESTED ACTION: NOMINATION

PROPERTY NAME: West Hatfield Historic District

MULTIPLE NAME:

STATE & COUNTY: MASSACHUSETTS, Hampshire

DATE RECEIVED: 1/11/05      DATE OF PENDING LIST: 2/14/05  
DATE OF 16TH DAY: 3/01/05      DATE OF 45TH DAY: 2/24/05  
DATE OF WEEKLY LIST:

REFERENCE NUMBER: 05000079

REASONS FOR REVIEW:

APPEAL: N DATA PROBLEM: N LANDSCAPE: N LESS THAN 50 YEARS: Y  
OTHER: N PDIL: N PERIOD: N PROGRAM UNAPPROVED: N  
REQUEST: N SAMPLE: N SLR DRAFT: N NATIONAL: N

COMMENT WAIVER: N

ACCEPT     RETURN     REJECT    2/24/05 DATE

ABSTRACT/SUMMARY COMMENTS:

Entered in the  
National Register

RECOM./CRITERIA \_\_\_\_\_

REVIEWER \_\_\_\_\_ DISCIPLINE \_\_\_\_\_

TELEPHONE \_\_\_\_\_ DATE \_\_\_\_\_

DOCUMENTATION see attached comments Y/N see attached <sup>624</sup> SLR Y/N

If a nomination is returned to the nominating authority, the nomination is no longer under consideration by the NPS.



Lorenzo Cutter House  
Hampshire, MA  
Photograph No. 1



Stebbins - Engelhardt House  
Hampshire, MA  
- Photograph No. 2



Isaac Sampson House  
Hampshire, MA  
Photograph No. 3



Billings-Strong House  
Hamphire, MA  
Photograph No. 4



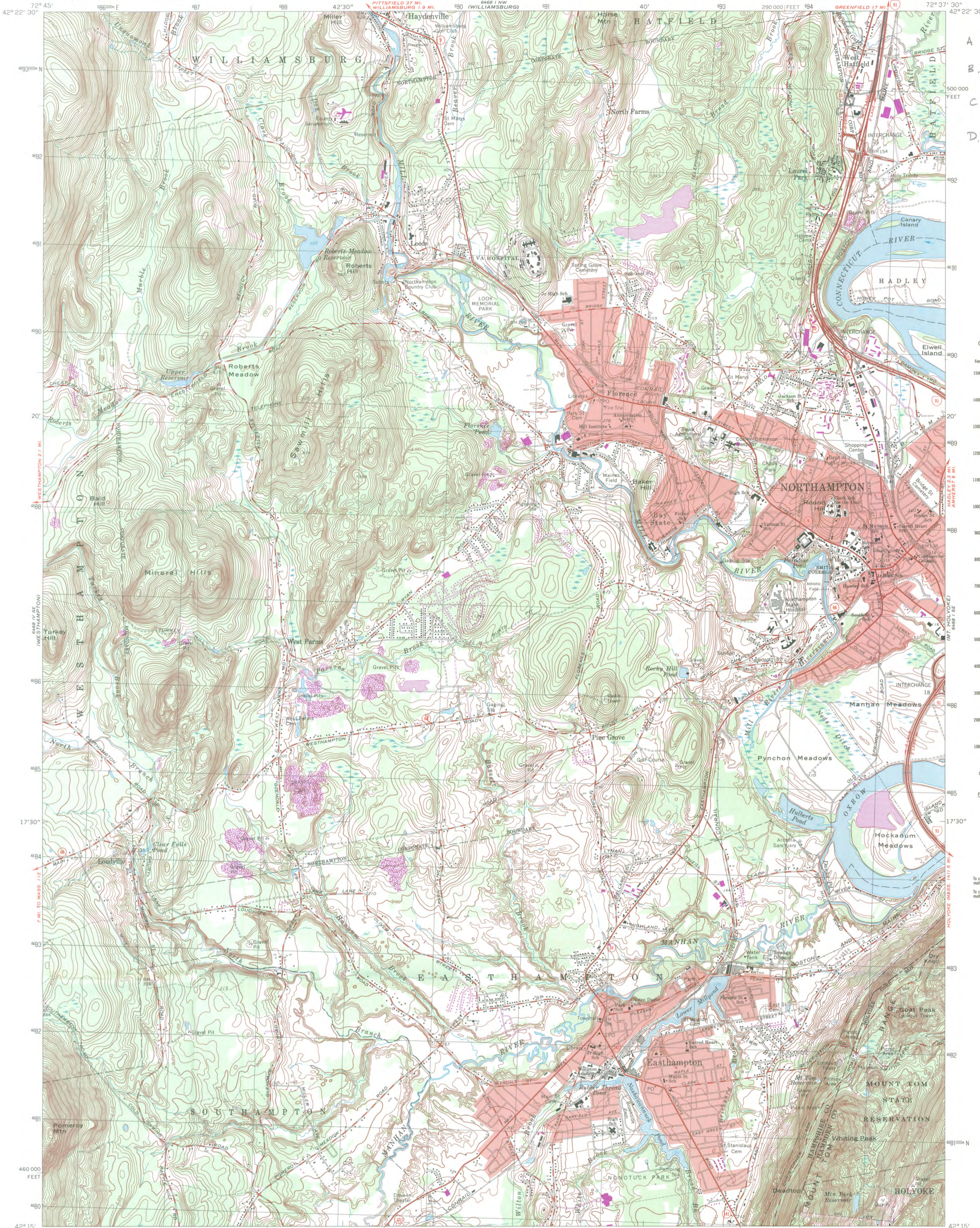
Fitch-Korze House  
Hampshire, MA  
Photograph No. 5



Congregational Chapel  
Hampshire, MA  
Photograph no. 6



Merle Strong House and Post Office  
Hampshire County, MA  
Photograph No. 7.

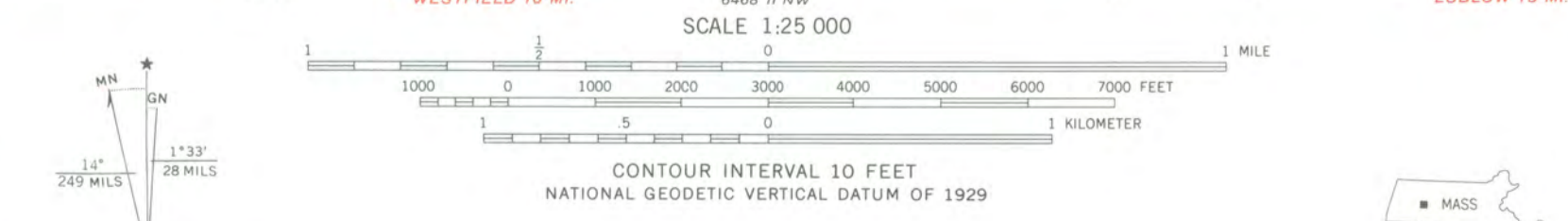


ZONE 19  
A. 694900 4694000  
B. 694300/4694000  
C. 694420/4693040  
D. 694700/4693000



To convert feet to meters multiply by 3048  
To convert meters to feet multiply by 3.2808

Mapped, edited, and published by the Geological Survey  
Control by USGS, USC&GS, and Massachusetts Geodetic Survey  
Topography by planetable surveys 1935. Revised 1964  
Polyconic projection. 1927 North American datum  
10,000-foot grid based on Massachusetts coordinate system, mainland zone  
1000-meter Universal Transverse Mercator grid, zone 18  
Red tint indicates areas in which only landmark buildings are shown  
There may be private inholdings within the boundaries of the National or State reservations shown on this map  
Revisions shown in purple compiled in cooperation with the State of Massachusetts agencies from aerial photographs taken 1975 and other source data. This information not field checked. Map edited 1979



SCALE 1:25 000  
CONTOUR INTERVAL 10 FEET  
NATIONAL GEODETIC VERTICAL DATUM OF 1929

ROAD CLASSIFICATION  
Heavy-duty Road Light-duty  
Medium-duty Unimproved dirt  
Interstate Route U.S. Route State Route

EASTHAMPTON, MASS.  
N4215—W7237.5/7.5  
1964  
PHOTOREVISED 1979  
AMS 6468 I SW—SERIES V814

**Williamsburg MASSACHUSETTS**  
 1:25 000-scale metric topographic map

**7.5 X 15 MINUTE QUADRANGLE SHOWING**

- Contours and elevations in meters
- Highways, roads and other manmade structures
- Water features
- Woodland areas
- Geographic names

**U.S. GEOLOGICAL SURVEY**  
1990

Produced by the United States Geological Survey  
 Control by USGS, NOS/NOAA, and Commonwealth of Massachusetts agencies  
 Compiled by photogrammetric methods from aerial photographs taken 1981. Field checked 1984. Map revised 1990  
 Supersedes Williamsburg 1964 and Mt. Toby 1971  
 1:25 000-scale maps  
 Projection and 1000-meter grid, zone 18, Universal Transverse Mercator  
 10,000-foot grid ticks based on Massachusetts coordinate system, mainland zone. 1927 North American Datum  
 To place the projection lines 5 meters south and 38 meters west as shown by dashed corner ticks  
 There may be private inholdings within the boundaries of the National or State reservations shown on this map

CONTOUR INTERVAL 3 METERS  
 NATIONAL GEODETIC VERTICAL DATUM OF 1929  
 CONTROL ELEVATIONS SHOWN TO THE NEAREST 0.1 METER  
 OTHER ELEVATIONS SHOWN TO THE NEAREST 0.3 METER

THIS MAP COMPLIES WITH NATIONAL MAP ACCURACY STANDARDS  
 FOR SALE BY U.S. GEOLOGICAL SURVEY  
 P.O. BOX 25286, DENVER, COLORADO 80225

CONVERSION TABLE		DECLINATION DIAGRAM		ADJOINING MAPS			
Meters	Feet	Diagram		1	2	3	4
1	3.2808			1	2	3	4
2	6.5617			5	6	7	8
3	9.8425						
4	13.1234						
5	16.4042						
6	19.6850						
7	22.9659						
8	26.2467						
9	29.5275						
10	32.8084						

To convert meters to feet multiply by 3.2808  
 To convert feet to meters multiply by 0.3048

UTM grid convergence (m) at center of map  
 declination (m) at center of map  
 Diagram is approximate

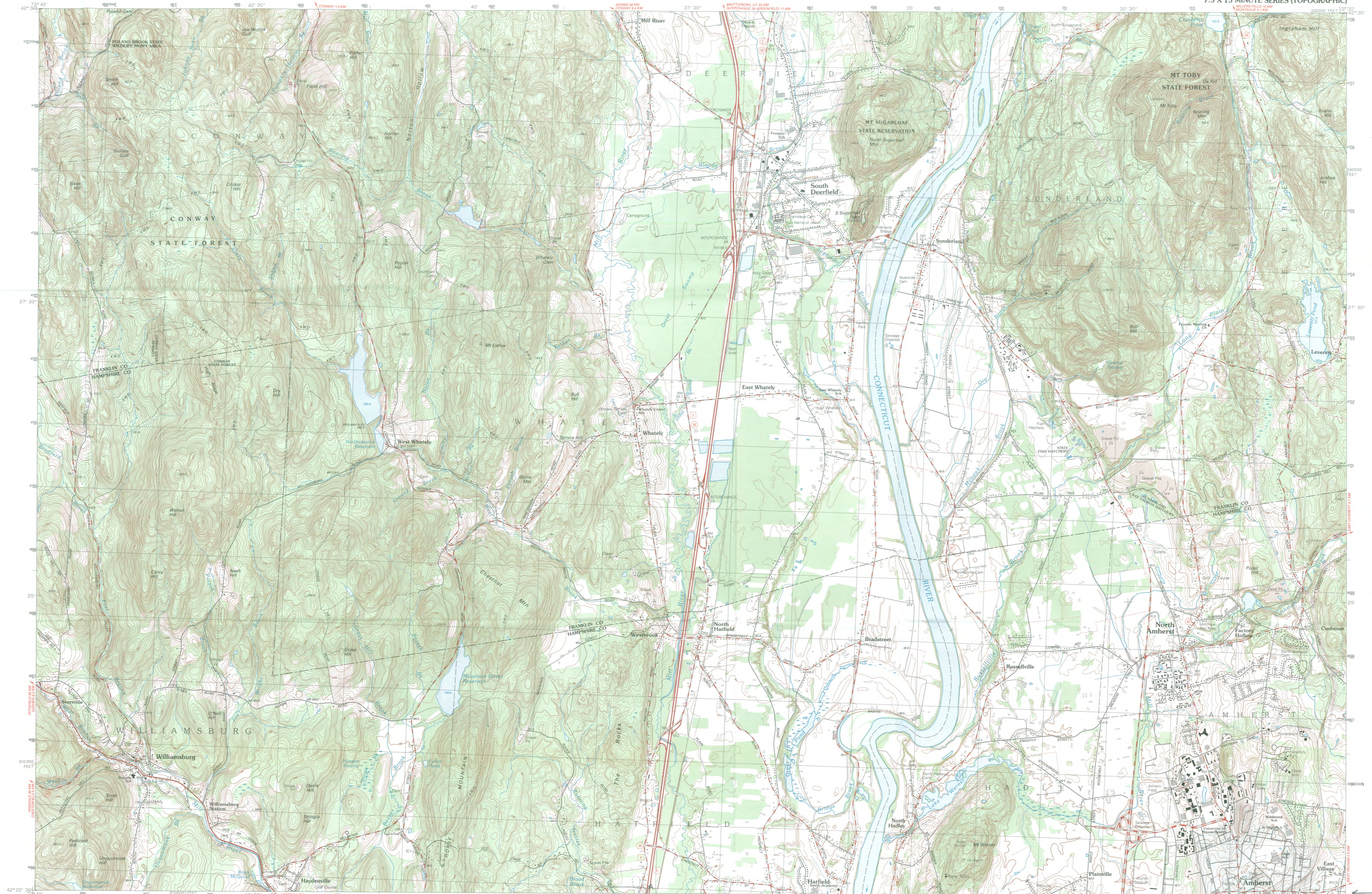
1 Ashfield  
 2 Greenfield  
 3 Orange  
 4 Goshen  
 5 Shelburne  
 6 Chester  
 7 Easthampton  
 8 Winsor Dam

ISBN 0-607-23486-5  
 9 780607 234862

**Topographic Map Symbols**

Primary highway, hard surface	
Secondary highway, hard surface	
Light-duty road, hard or improved surface	
Unimproved road, trail	
Route marker: interstate, U. S. State	
Railroad: standard gauge, narrow gauge	
Bridge: drawbridge	
Footbridge; overpass; underpass	
Build-up areas: only selected landmark buildings shown	
House: barn; church; school; large structure	
Boundary:	
National, with monument	
State	
County, parish	
Civil township, precinct, district	
Incorporated city, village, town	
National or State reservation; small park	
Land grant with measurement; bond section corner	
U. S. public lands survey: range, township, section	
Range, township, section line: location approximate	
Fence or field line	
Power transmission line, isolated tower	
Dam; dam with lock	
Cemetery; grave	
Campground; picnic area; U. S. location monument	
Wellhead; water well; spring	
Mine shaft; prospect; adit or cave	
Control: horizontal station; vertical station; spot elevation	
Contours: index; intermediate; supplementary; depression	
Drowned surface: strip mine, levee, sand	
Sounding; depth curve	
Perennial lake and stream; intermittent lake and stream	
Rapids, large and small; falls, large and small	
Swamp; marsh	
Submerged marsh; land subject to controlled inundation	
Woodland; scattered trees	
Scrub; mangrove	
Other: viaduct	

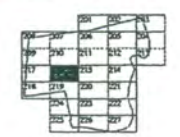
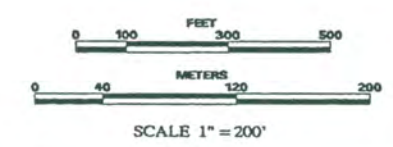
A pamphlet describing topographic maps is available on request





**Legend:**  
 Ac. — Area Surveyed  
 AcC. — Area Calculated  
 100' — Record Dimension  
 100' — Scaled Dimension  
 R/W — Right of Way/Parcel

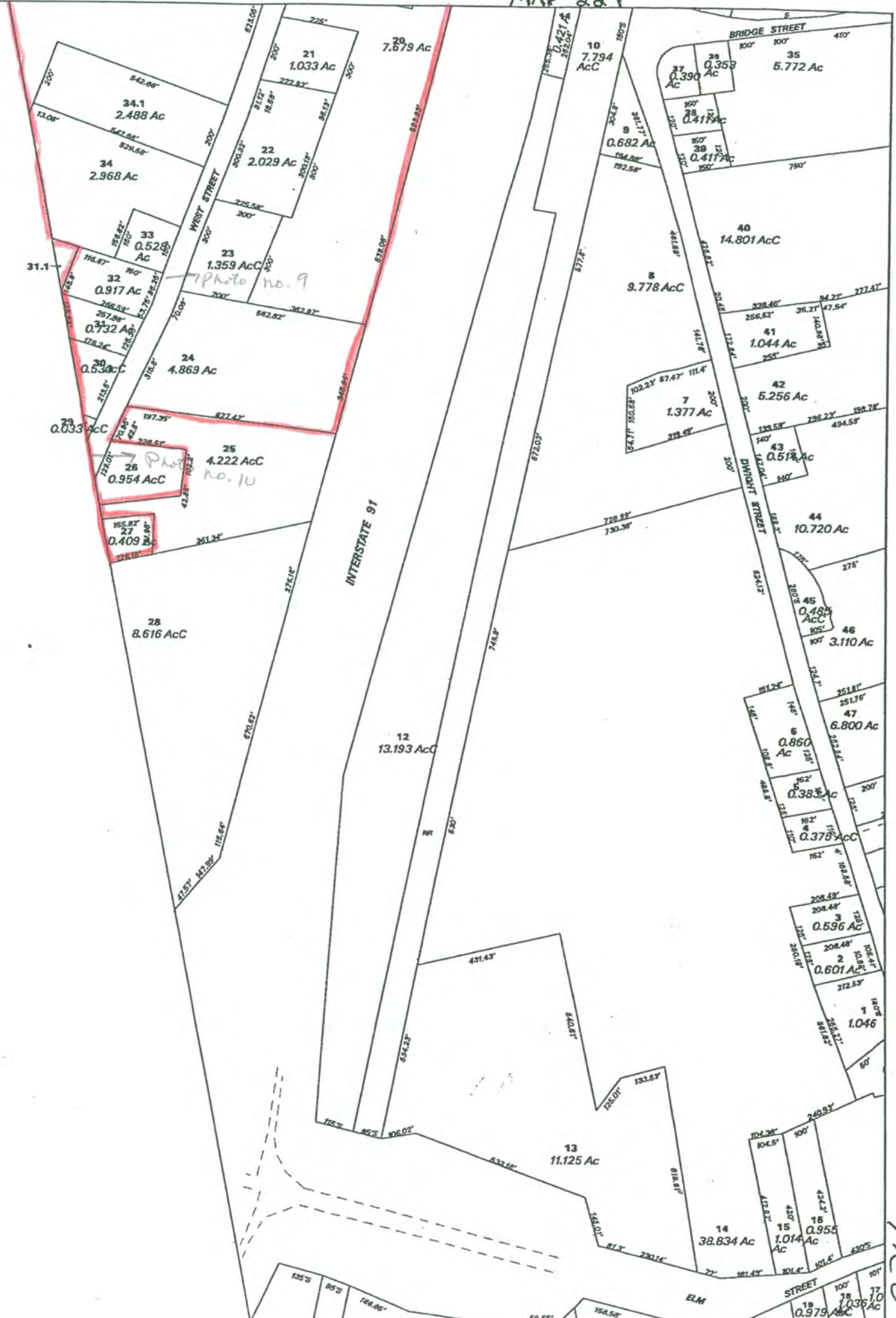
**PARCEL CHECKPLOT**  
**TOWN OF HATFIELD**  
 Hampshire County, Massachusetts

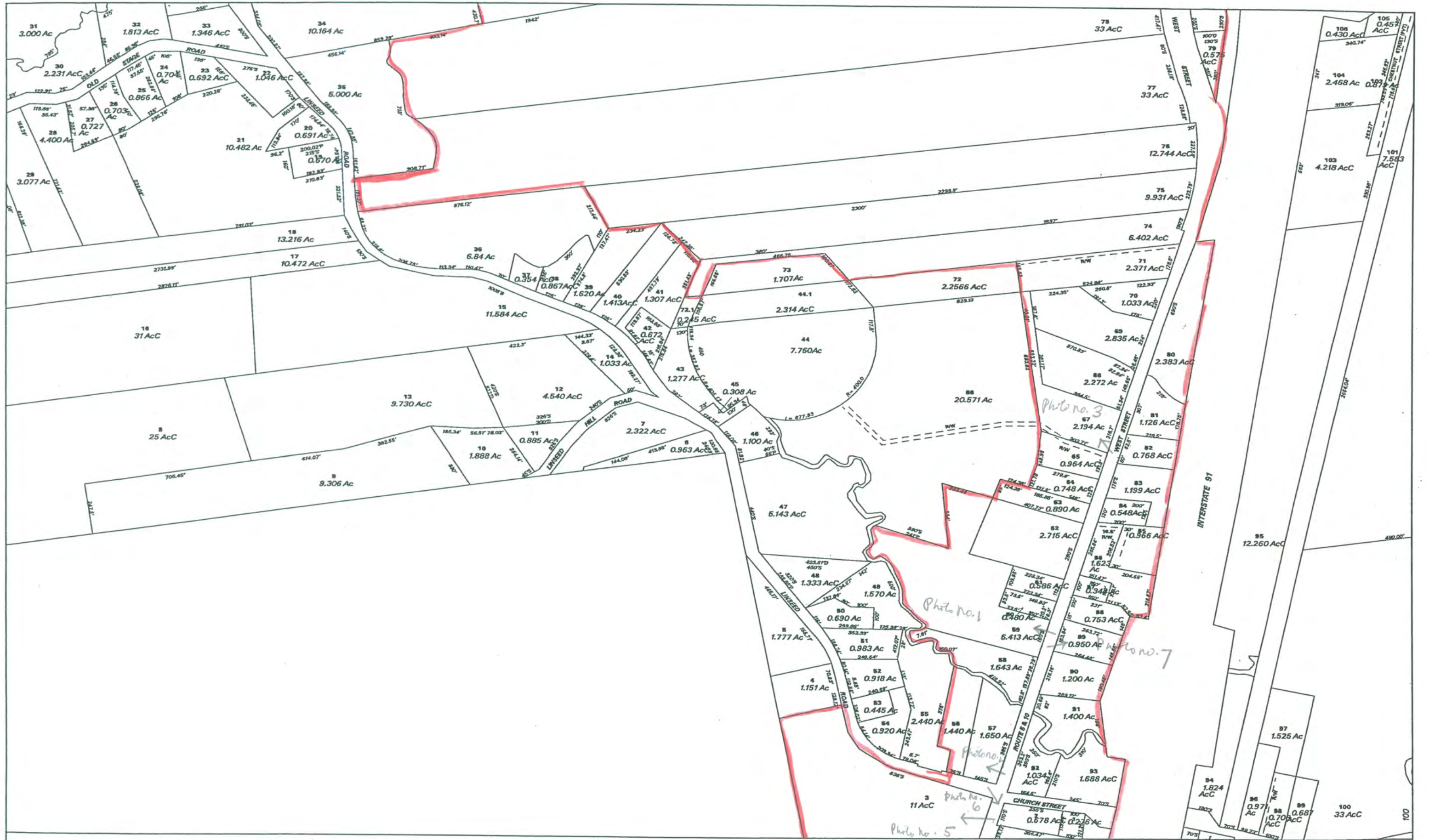


MAP NO:  
**216**

APPLIED GEOGRAPHICS, INC.  
 1000 North Main Street  
 North Andover, MA 01845  
 Phone: 978-875-1111  
 Fax: 978-875-1112  
 E-mail: info@appliedgeographics.com

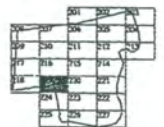
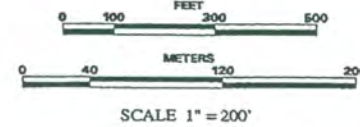
11/1/2001





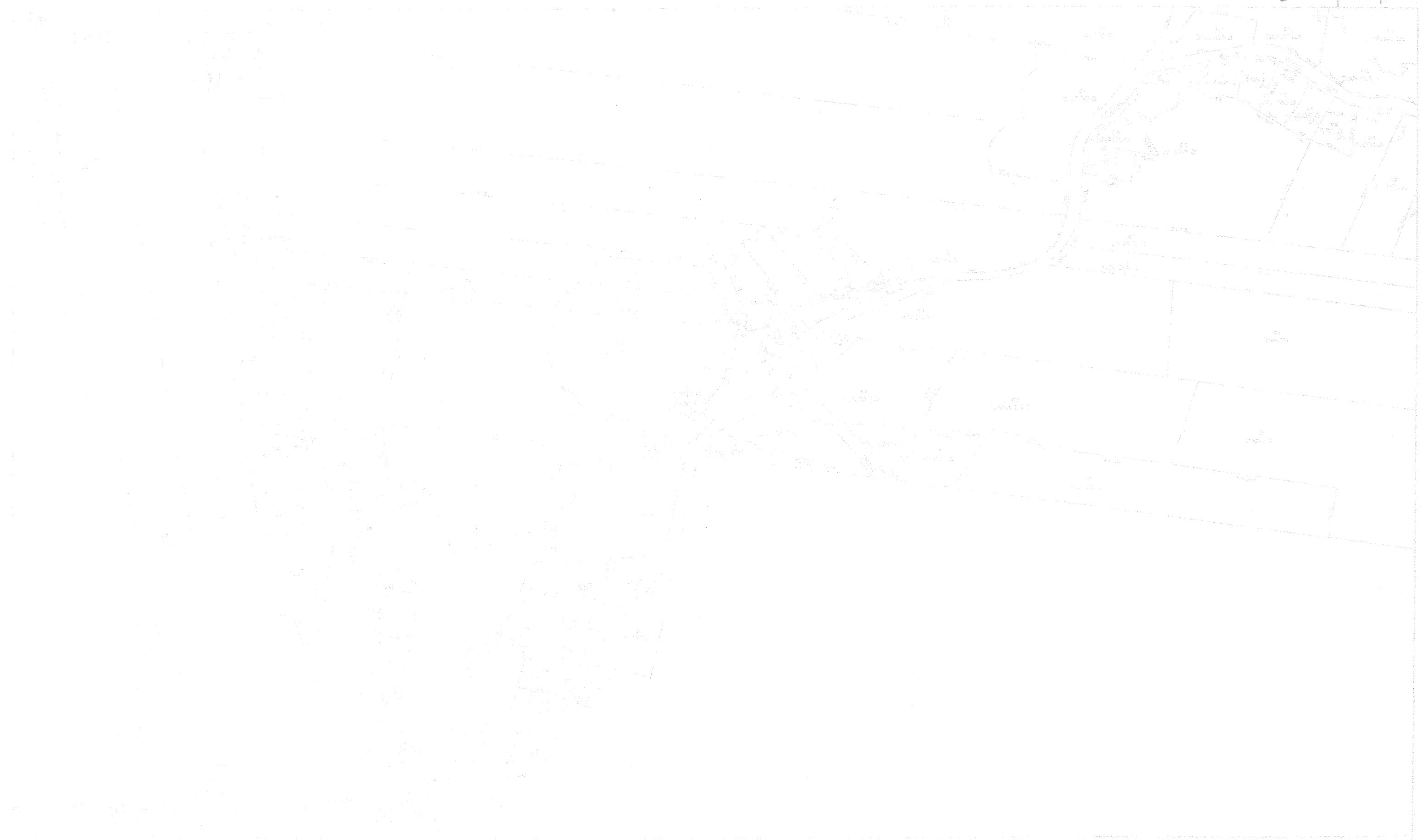
**Legend:**  
 Ac. Area Surveyed  
 AcC. Area Calculated  
 100' Record Dimension  
 100'S Scaled Dimension  
 RW. Right of Way/Access  
 Parcel

**PARCEL CHECKPLOT**  
**TOWN OF HATFIELD**  
 Hampshire County, Massachusetts



MAP NO:  
**219**

3 maps 42



Scale 1:1000  
North arrow

Site plan of [illegible]  
[illegible]



**The Commonwealth of Massachusetts**  
William Francis Galvin, Secretary of the Commonwealth  
Massachusetts Historical Commission

December 30, 2004

Ms. Carol Shull  
National Register of Historic Places  
Department of the Interior  
National Park Service  
1201 Eye Street, NW, 8<sup>th</sup> floor  
Washington, DC 20005



Dear Ms. Shull:

Enclosed please find the following nomination form:

West Hatfield HD, Hatfield (Hampshire), MA

The nomination has been voted eligible by the State Review Board and has been signed by the State Historic Preservation Officer. The owners of the property were notified of pending State Review Board consideration 30 to 45 days before the meeting and were afforded the opportunity to comment.

Sincerely,

A handwritten signature in cursive script that reads "Betsy Friedberg".

Betsy Friedberg  
National Register Director  
Massachusetts Historical Commission

enclosure

cc: Bonnie Parsons, PVPC, consultant  
Frederick & Christina Martin, Hatfield Historical Commission  
Mary Lou Cutter, Hatfield Historical Commission  
Patrick J. Gaughan, Board of Selectmen  
Hatfield Planning Board