



"The Bird's Nest"
526 Broadway at One Mile Corner
Newport, Rhode Island

MAY 28 1982

Photographer: Eric Hertfelder
Date: December, 1981
Negative filed at: Rhode Island Historical
Preservation Commission

View: View of street elevation and a portion
of the south facade from the southeast.

Figure B #1.



"The Bird's Nest"
526 Broadway at One Mile Corner
Newport, Rhode Island

MAY 28 1982

Photographer: Eric Hertfelder
Date: September, 1981
Negative filed at: Rhode Island Historical
Preservation Commission

View: South elevation showing dining room
bay window and closed end of porch with
lancet window.

Figure 2.



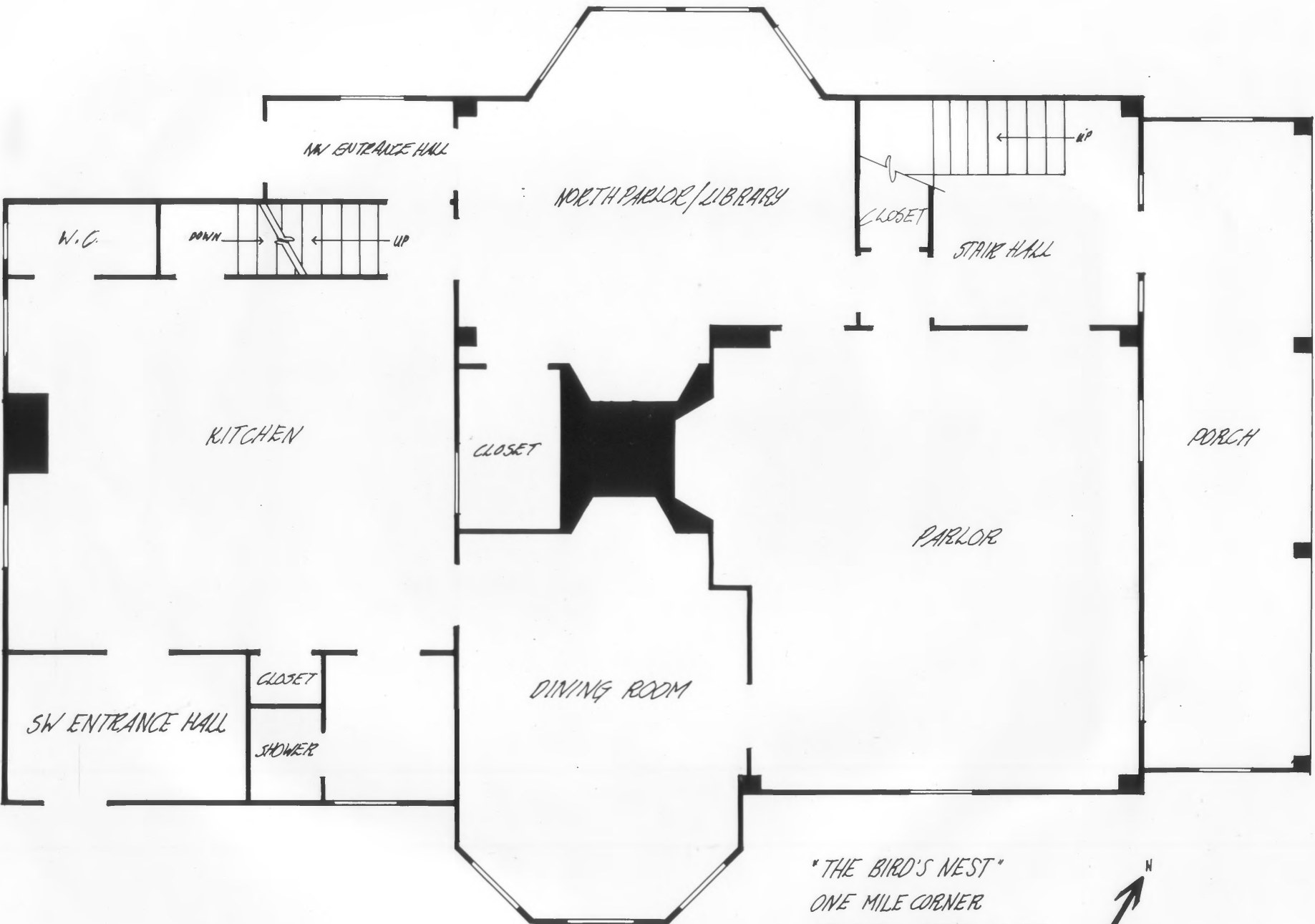
"The Bird's Nest"
526 Broadway at One Mile Corner
Newport, Rhode Island

Photographer: Clifford Renshaw
Date: December, 1981
Negative filed at: Rhode Island Historical
Preservation Commission

View: Front of house from the northeast showing
porch detail.

Figure 3.

MAY 28 1982



"THE BIRD'S NEST"
ONE MILE CORNER
NEWPORT, RHODE ISLAND
SKETCH PLAN - NOT TO SCALE



"The Bird's Nest"
526 Broadway at One Mile Corner
Newport, Rhode Island

Drawn-up by: David Chase
Date: September, 1981

MAY 28 1982

Schematic floorplan.

Figure 4.



"The Bird's Nest"
526 Broadway at One Mile Corner
Newport, Rhode Island

MAY 28 1982

Photographer: Eric Hertfelder
Date: September, 1981
Negative filed at: Rhode Island Historical
Preservation Commission

View: View of living room showing fireplace
alcove and the room's woodwork.

Figure 5.



"The Bird's Nest"
526 Broadway at One Mile Corner
Newport, Rhode Island

Photographer: Eric Hertfelder
Date: September, 1981
Negative filed at: Rhode Island Historical
Preservation Commission

View: Front staircase detail.

MAY 28 1982 Figure 6.



"The Bird's Nest"
526 Broadway at One Mile Corner
Newport, Rhode Island

Photographer: Eric Hertfelder
Date: September, 1981
Negative filed at: Rhode Island Historical
Preservation Commission

View: View of parlor chamber, second floor.

MAY 28 1982 Figure 7.