

A black and white photograph showing a large, rectangular stone wall in the foreground, which is part of a quarry. The wall is made of rough-hewn stone blocks and is situated on a rocky outcrop. To the right of the wall, a large body of water is frozen, with several small, dark patches of ice or rocks protruding from the surface. In the background, a line of bare trees stretches across the horizon under a cloudy sky. The overall scene is desolate and cold.

PLATE 1

Johnson's Island Civil War Prison

View of Quarry's North Wall Facing East

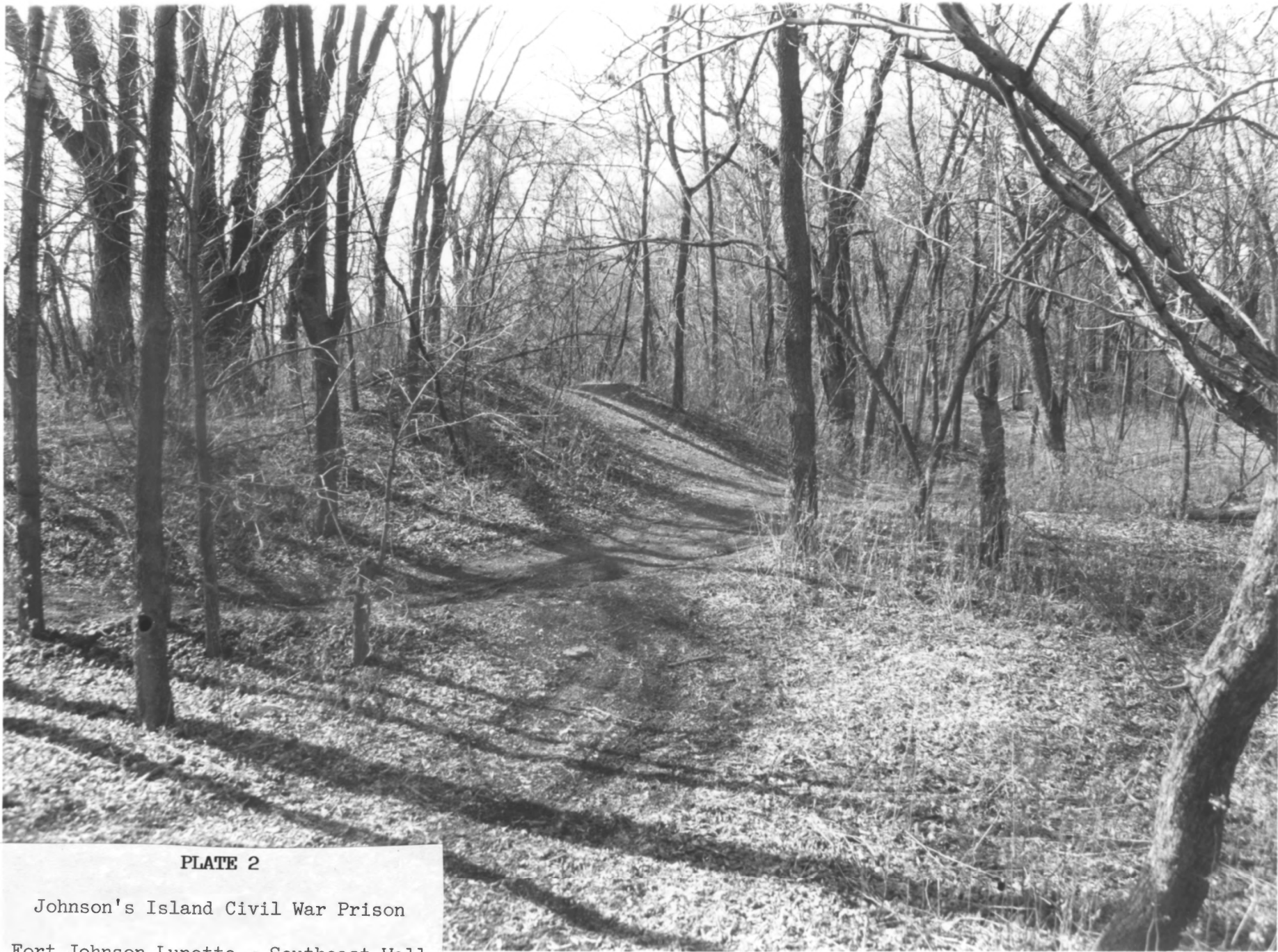


PLATE 2

Johnson's Island Civil War Prison

Fort Johnson Lunette - Southeast Wall



PLATE 3

Johnson's Island Civil War Prison

Fort Johnson Lunette - East Wall



PLATE 4

Johnson's Island Civil War Prison
Fort Johnson Lunette - North Wall




PLATE 5

Johnson's Island Civil War Prison
N352E99 Trench Exposing Prison Ditch



PLATE 6

Johnson's Island Civil War Prison

N352E99 Closeup of Exposed Ditch



PLATE 7

Johnson's Island Civil War Prison
Fort Hill Redoubt Historical Photograph

1865



PLATE 8

Johnson's Island Civil War Prison
Officer's Quarters and Parade Grounds

no date

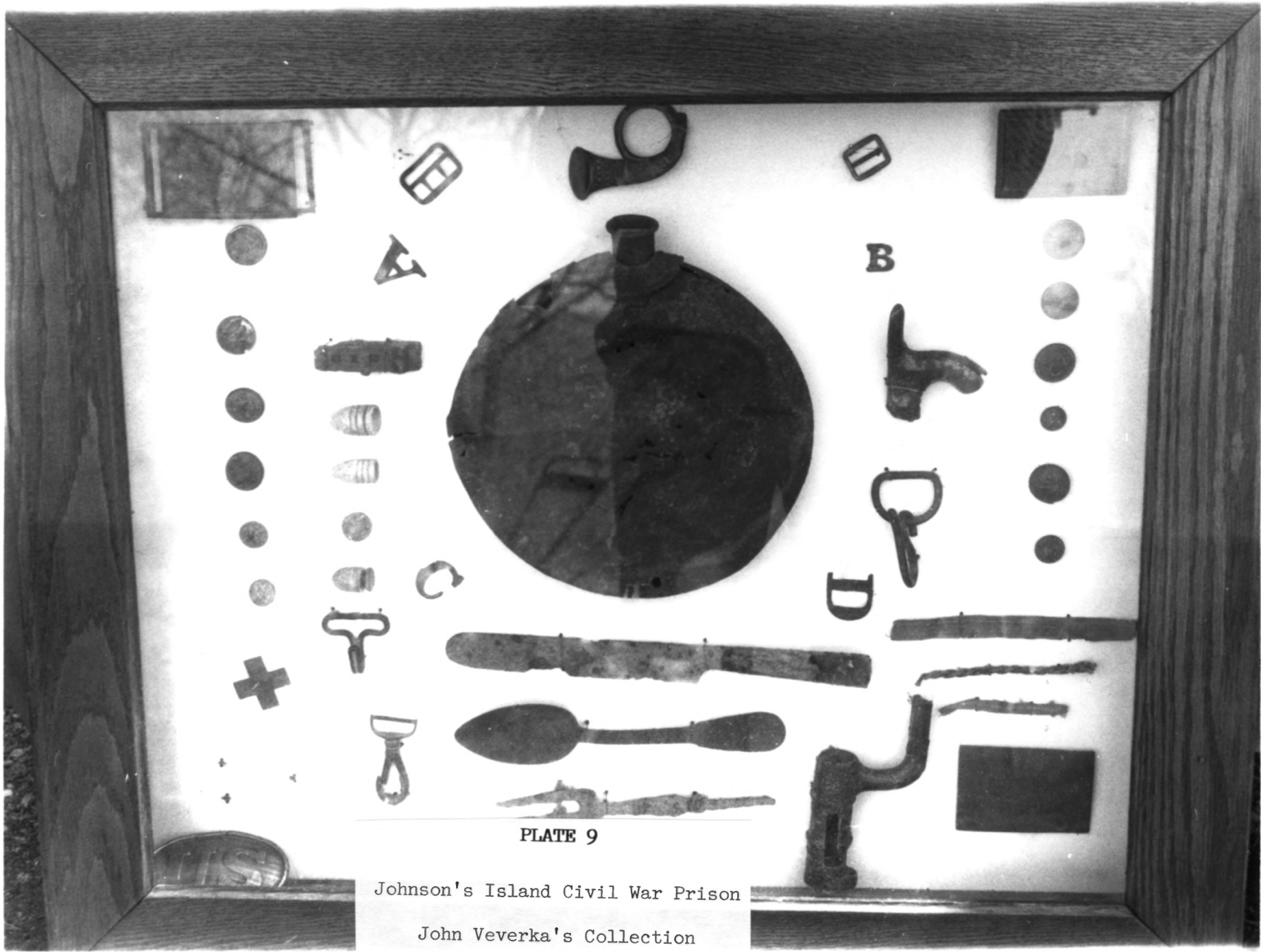


PLATE 9

Johnson's Island Civil War Prison
John Veverka's Collection

PLATE 10

Johnson's Island Civil War Prison

John Veverka's Collection



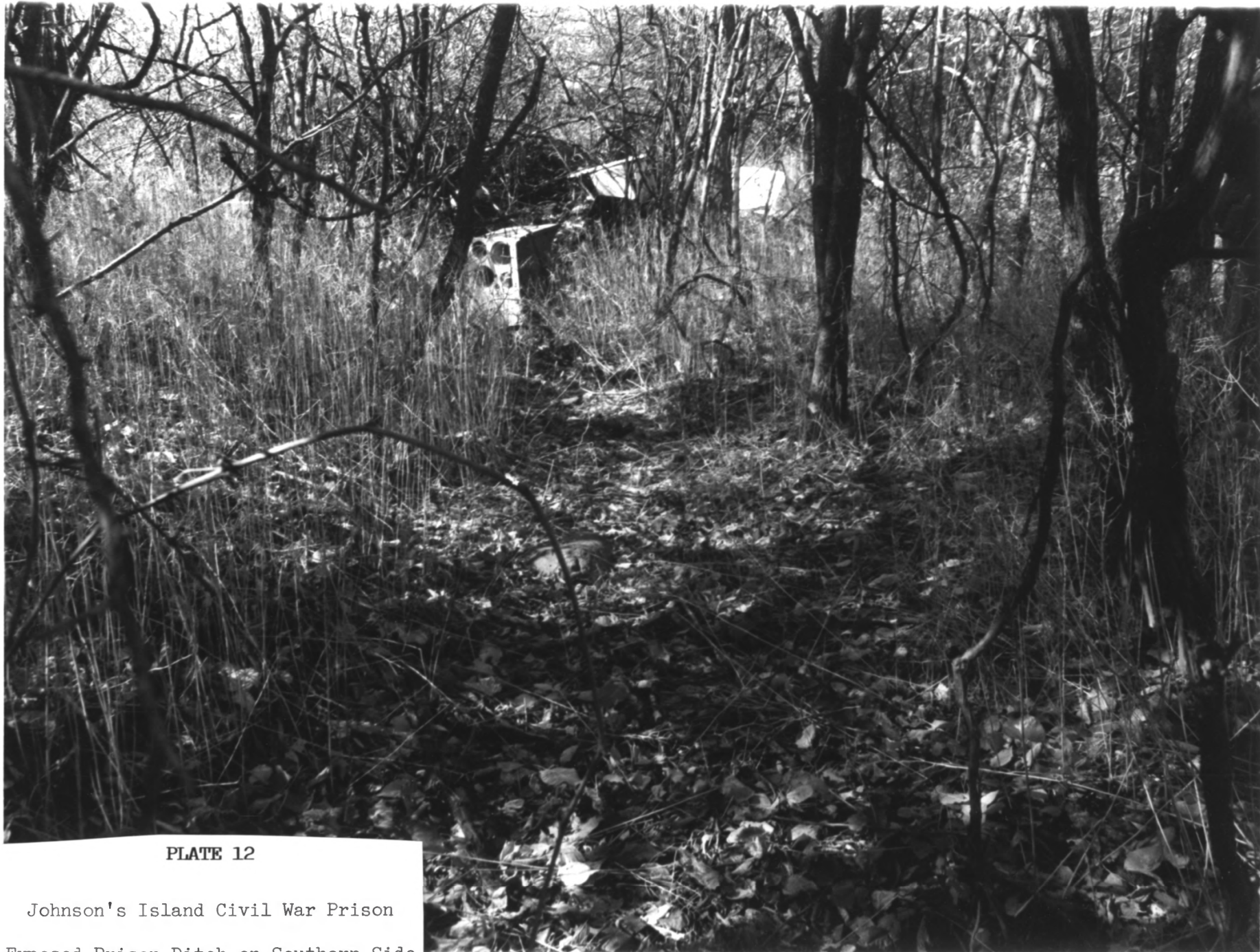


PLATE 12

Johnson's Island Civil War Prison
Exposed Prison Ditch on Southern Side



PLATE 13

Johnson's Island Civil War Prison
Fort Hill Redoubt - Northeast Corner