



700 E

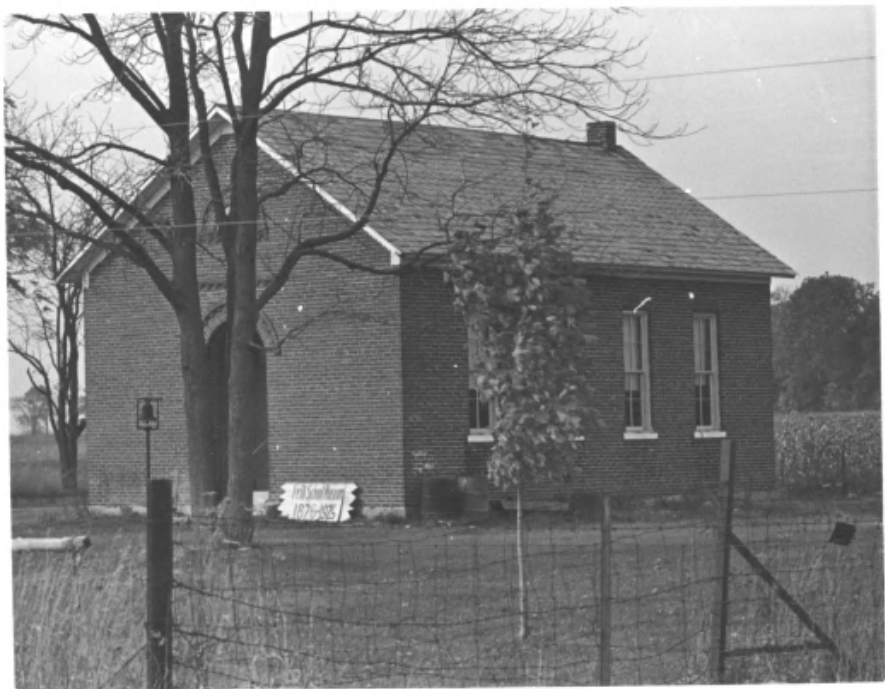
NE 10

1. Prill School Museum
2. Akron, Ind.
3. Don Brunn
4. Oct. 20, 1978
5. Don Brunn

Fulton Co.

6. West side of building
7. no. 1

DEC 10 1981



1. Prill School Museum
2. Akron, Ind.
3. Don Brunn
4. Oct. 20, 1978

NOV 12 1981

Fulton Co.

5. Don Brunn
6. southeast corner of
building
7. no. 2

DEC 10 1981



Mathematical problems on the chalkboard:

22	21	20
12	11	10
5	4	3
37	36	35

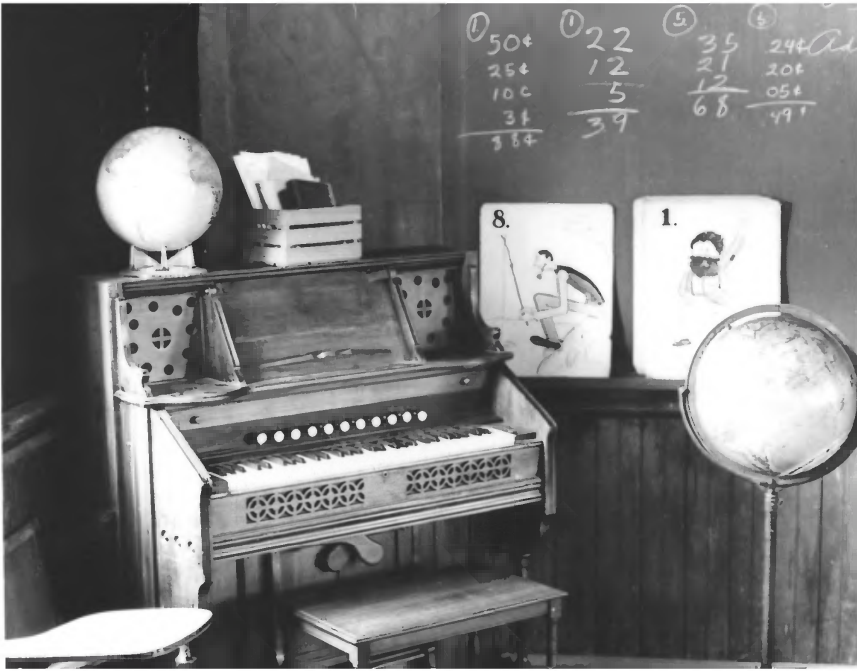
5%

1. Prill School ~~Museum~~
2. Akron, Ind.
3. Don Brunn
4. Oct. 20, 1978

Fulton Co.

NOV 12 1981

5. Don Brunn, Rochester, Ind.
6. camera facing north
7. no. 3 DEC 10 1981



$$\begin{array}{r} \textcircled{1} \ 50\text{¢} \\ 25\text{¢} \\ 10\text{¢} \\ 3\text{¢} \\ \hline 88\text{¢} \end{array}$$

$$\begin{array}{r} \textcircled{1} \ 22 \\ 12 \\ \hline 10 \\ 10 \\ \hline 20 \\ 20 \\ \hline 40 \\ 39 \end{array}$$

$$\begin{array}{r} \textcircled{5} \ 35 \\ 21 \\ \hline 14 \\ 14 \\ \hline 28 \\ 68 \end{array}$$

$$\begin{array}{r} \textcircled{5} \ 24\text{¢} \\ 20\text{¢} \\ \hline 4\text{¢} \\ 4\text{¢} \\ \hline 8\text{¢} \\ 49\text{¢} \end{array}$$



1. Prill School Museum
2. Akron, Ind.
3. Don Brunn
4. Oct. 20, 1978

NOV 12 1981

Fulton Co.

5. Don Brunn, Rochester,
Ind.
6. camera facing northwest
7. no. 4

DEC 10 1981



1. Prill School ~~Museum~~
2. Akron, Ind. Fulton Co.
3. Don Brunn
4. Oct. 20 1978
5. Don Brunn
6. North East corner
7. no. 5

NOV 12 1981