

FIRST EPISCOPAL CHURCH IN INDIANA

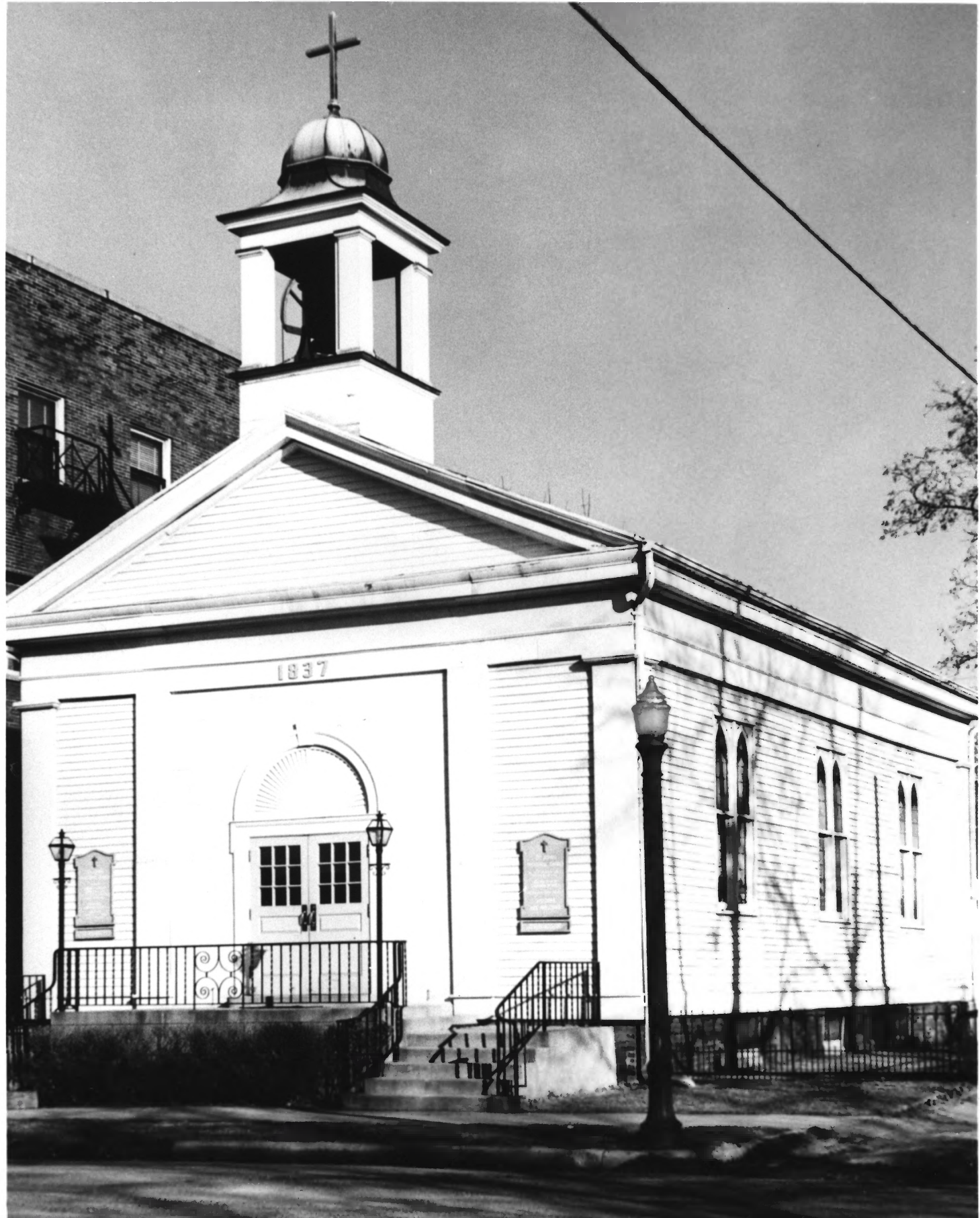
Saint John's Episcopal Church  
212 South Green Street  
Crawfordsville, Indiana 1918

Photo by Crawfordsville Journal

Negative in Journal-Review Morgue  
119 North Green Street  
Crawfordsville, Indiana

Front and Side View from Southwest  
Corner

Photo #1 of 9



1837

SAINT JOHN'S EPISCOPAL CHURCH  
212 South Green Street  
Crawfordsville, Indiana

1959

Photo by Crawfordsville Journal

Negative in Journal-Review Morgue  
119 North Green Street  
Crawfordsville, Indiana

Front and Side View from Southwest  
corner

Photo #2 of 9





1837

Holy Trinity  
Episcopal  
Church  
- 1837 -  
Everyone is  
welcome.  
This is more  
than  
a house of  
GOD.

Saint John's Episcopal Church  
212 South Green Street  
Crawfordsville, Indiana

Today

Photo by Joe Boswell  
308 South Green Street  
Crawfordsville, Indiana

1984

Negative in Boswell Studio

Front and Side Corner from  
Southwest

Photo #3 of 9



Saint John's Episcopal Church  
212 South Green Street  
Crawfordsville, Indiana

Today

Photo by Joe Boswell  
308 South Green Street  
Crawfordsville, Indiana

1984

Negative in Boswell Studio

Side View showing East End Extension  
made in 1960 from Southwest Angle

Photo #4 of 9





Saint John's Episcopal Church

1959

212 South Green Street

Crawfordsville, Indiana

Photo taken by Crawfordsville Journal  
Christmas 1959

Negative on file in Journal-Review  
119 North Green Street  
Crawfordsville, Indiana

View from West End - Looking East -  
Showing 1870 Stained Glass Window  
"Bishop's Throne" under Window - beside  
organ

Photo #5 of 9



Saint John's Episcopal Church  
212 South Green Street  
Crawfordsville, Indiana

1972

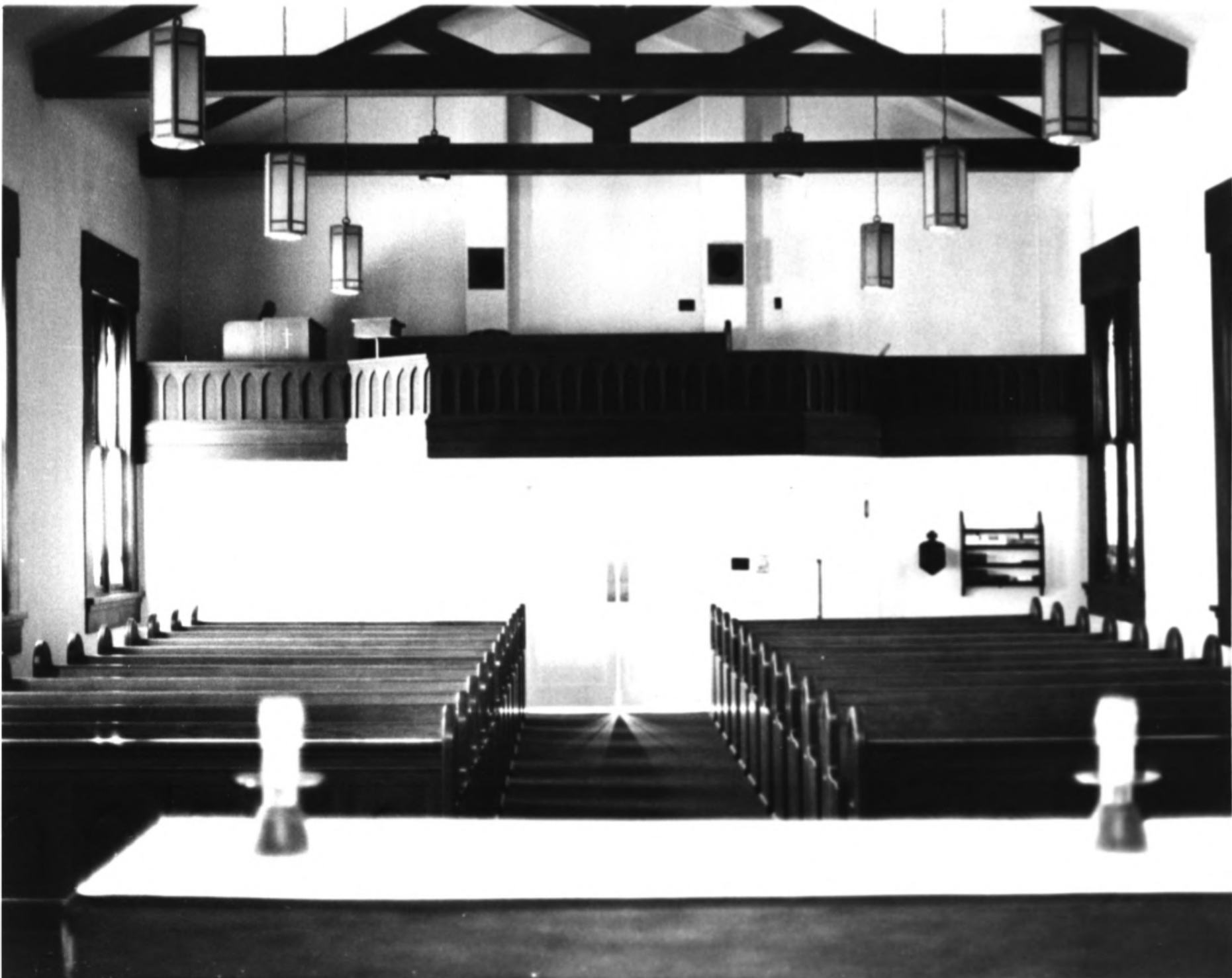
Photo by Journal-Review  
119 North Green Street  
Crawfordsville, Indiana

Negative in Journal-Review Morgue

View from West End - Looking toward 1870  
Stained Glass Window over Altar in East End.  
Wooden paneling was burned in a 1974  
Christmas fire and was removed since it was  
not original.

Photo #6 of 9





Saint John's Episcopal Church  
212 South Green Street  
Crawfordsville, Indiana

1976

Photo by Journal-Review  
119 North Green Street  
Crawfordsville, Indiana

Negative in Journal-Review Morgue

Interior from back of Altar looking west  
showing exposed original black walnut beams.

Photo #7 of 9



Saint John's Episcopal Church  
212 South Green Street  
Crawfordsville, Indiana

Today

Photo by Journal-Review  
119 North Green Street  
Crawfordsville, Indiana

Negative in Journal-Review Morgue

Looking East to 1870 Stained Glass Window

Photo #8 of 9





Saint John's Episcopal Church  
212 South Green Street  
Crawfordsville, Indiana

"Bishop's Throne" - no date available  
Shown in early picture - Cathedral Design

Photo by Joe Boswell  
308 South Water Street  
Crawfordsville, Indiana

Negative in Boswell Studio

Photo #9 of 9