

Photo #1 of 5

Řad Plzen čis 9 Z.Č.B.J.

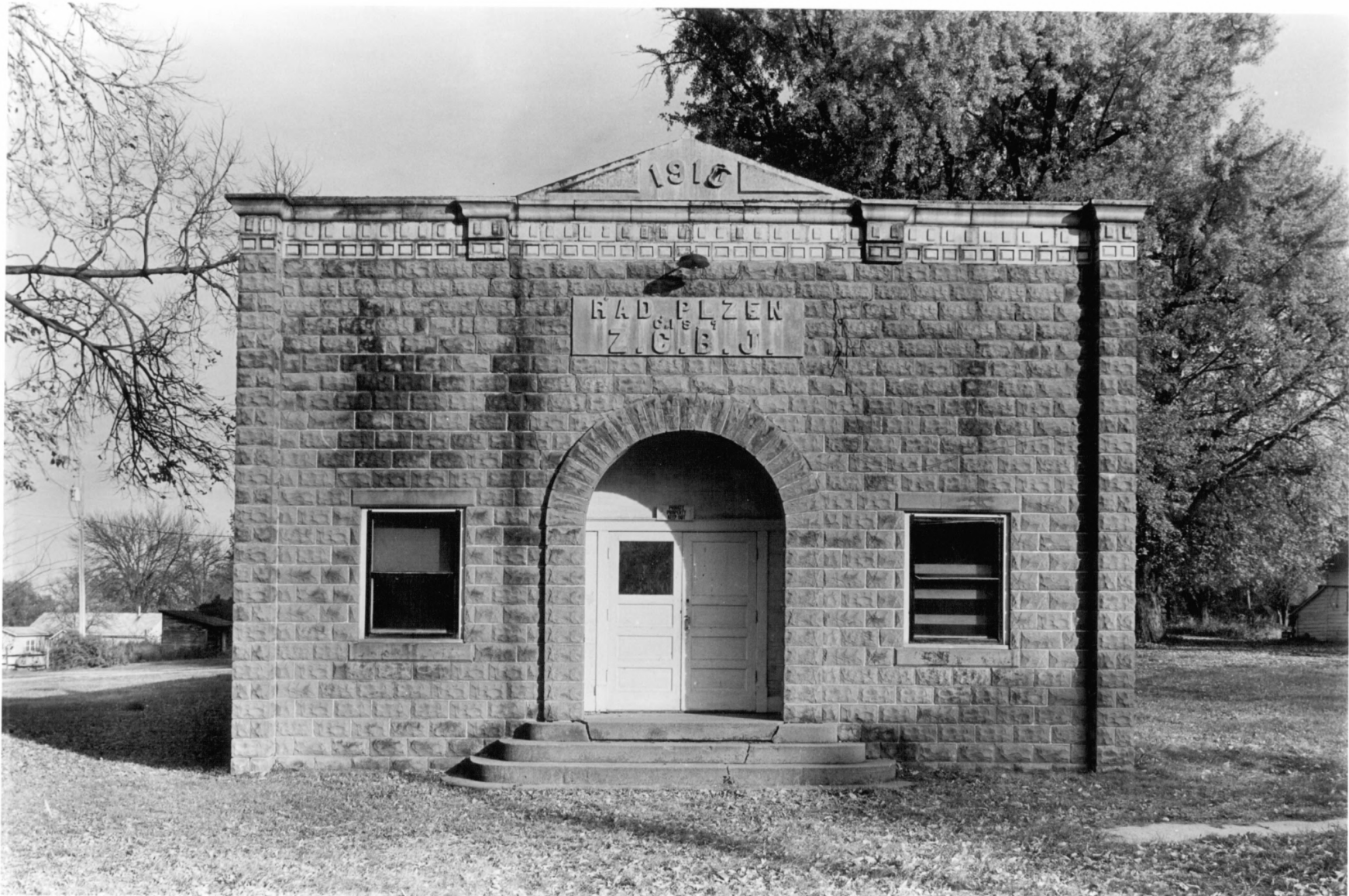
Morse Bluff, Saunders County, Nebraska

NeHBS # SD10-6

Photo: D. Murphy, Nebraska State
Historical Society

November 1984 (NSHS 8411/1: 8)

General view looking northeast.



1916

RAD. PLZEN
CAL BY
Z. C. B. J.

Photo #2 of 5

Rad Plzen čis 9 Z.Č.B.J.

Morse Bluff, Saunders County, Nebraska

NeHBS # SD10-6

Photo: D. Murphy, Nebraska State

Historical Society

November 1984 (NSHS 8411/1: 4)

View of the west front facade, looking
east.

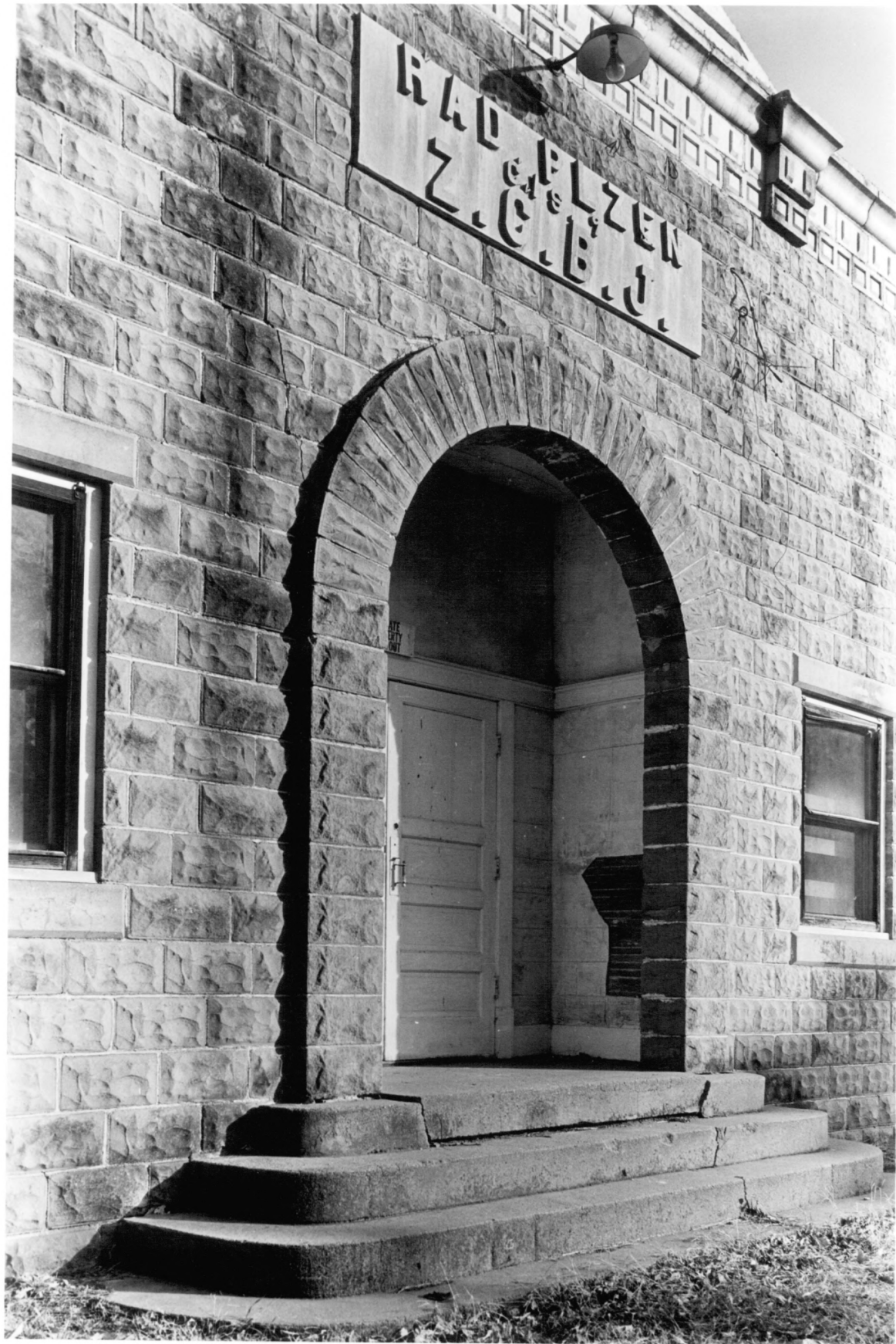


Photo #3 of 5

Řad Plzen čis 9 Z.Č.B.J.

Morse Bluff, Saunders County, Nebraska

NeHBS # SD10-6

Photo: D. Murphy, Nebraska State

Historical Society

November 1984 (NSHS 8411/1:11)

Detail of the entrance porch, looking
southeast.



Photo #4 of 5

Rad Plzen čis 9 Z.Č.B.J.

Morse Bluff, Saunders County, Nebraska

NeHBS # SD10-6

Photo: D. Murphy, Nebraska State

Historical Society

November 1984 (NSHS 8411/3:5)

General interior view of the hall, looking east toward the stage.

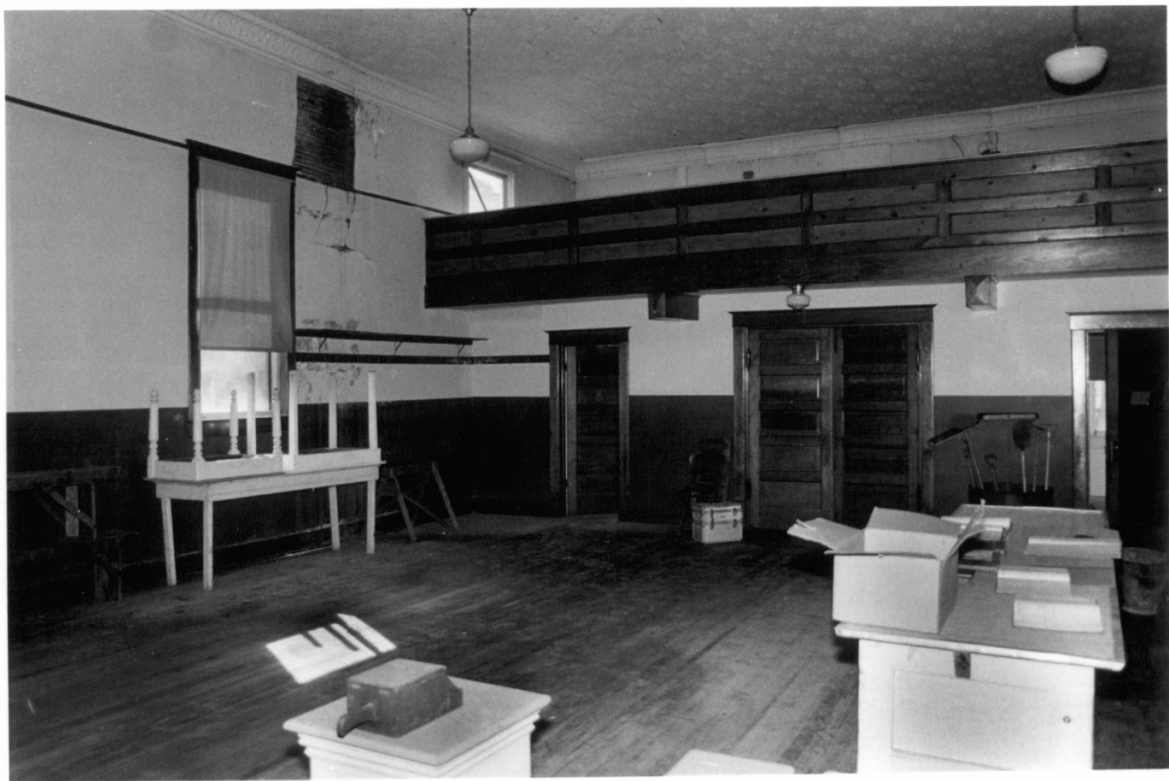


Photo #5 of 5

Rad Plzen čis 9 Z.Č.B.J.

Morse Bluff, Saunders County, Nebraska

NeHBS # SD10-6

Photo: D. Murphy, Nebraska State

Historical Society

November 1984 (NSHS 8411/3:10)

General view of the interior, looking southwest at the entrance and balcony.