



(Hudson County)

Photo # .KEUFFEL AND ESSER COMPLEX, Hoboken, N.J.

Grand Street elevation: From left, Buildings C, D,  
and Dx, with superimposed additions.

1985



*(Hudson County)*

Photo # .KEUFFEL AND ESSER COMPLEX, Hoboken, N.J.  
Original K&E Building in Hoboken: (not erected by  
K&E). Burned 1983, therefore not included in  
nomination.

*1985*



Photo #     . KEUFFEL AND ESSER COMPLEX, Hoboken, N.J. (Hudson County)  
Building C, at intersection of Third and Grand Sts.,  
view looking NW

1985



(Hudson County)

Photo #     . KEUFFEL AND ESSER COMPLEX, Hoboken, N.J.

Detail of entry and base of projecting tower on  
Bldg B, corner of Third and Grand Streets

1985





(Hudson County)

Photo #     . KEUFFEL AND ESSER COMPLEX, Hoboken, N.J.  
View of projecting tower on Building B at corner of  
Third and Grand Streets. View looking ENE.

1985



Photo # \_\_\_\_\_ . KEUFFEL AND ESSER COMPLEX, Hoboken, N.J. (Hudson County)  
Center Bay detail, Building B, on Third St elevation

1985



Photo # \_\_\_\_\_ . KEUFFEL AND ESSER COMPLEX, Hoboken, N.J. (Hudson County)  
Detail of Building D entry on Grand Street

1985



**LOFT  
FOR RENT**  
UP TO 2500 SQ FEET ON FLOOR  
FULLY RINKLED AND HEAT  
HEAVY POWER AVAILABLE

NGS  
406

(Hudson County)

Photo #         . KEUFFEL AND ESSER COMPLEX, Hoboken, N.J.  
Detail of projecting oriel on Building A, located on  
Third Street elevation at corner of Adams Street.

1925





Photo #      .KEUFFEL AND ESSER COMPLEX, Hoboken, N.J.  
North (at right) and East elevations of Building A  
(Hudson County)

1985



(Hudson County)

Photo #     . KEUFFEL AND ESSER COMPLEX, Hoboken, N.J.  
Adams Street elevation of Building A, view looking  
south.

1985



(Hudson County)

Photo # .KEUFFEL AND ESSER COMPLEX, Hoboken, N.J.  
Building A, Third Street and Adams Street elevations  
View looking NNE.

1985



(Hudson County)

Photo #     . KEUFFEL AND ESSER COMPLEX, Hoboken, N.J.

Detail of entry to courtyard from Grand Street,  
located in Building D.

1985





*(Hudson County)*

Photo # .KEUFFEL AND ESSER COMPLEX, Hoboken, N.J.  
Loading dock on rear of Building D. South elevation of  
powerhouse at left.

*1985*



KEUFFEL AND ESSER COMPLEX, HOBOKEN, NJ (Hudson County)  
View of back side of original complex,  
View looking SSE.

1985



Photo # .KEUFFEL AND ESSER COMPLEX, Hoboken, N.J. (Hudson County)  
Third Street elevation, Building A at left, Building  
B at center, and Building C at far end.

1985

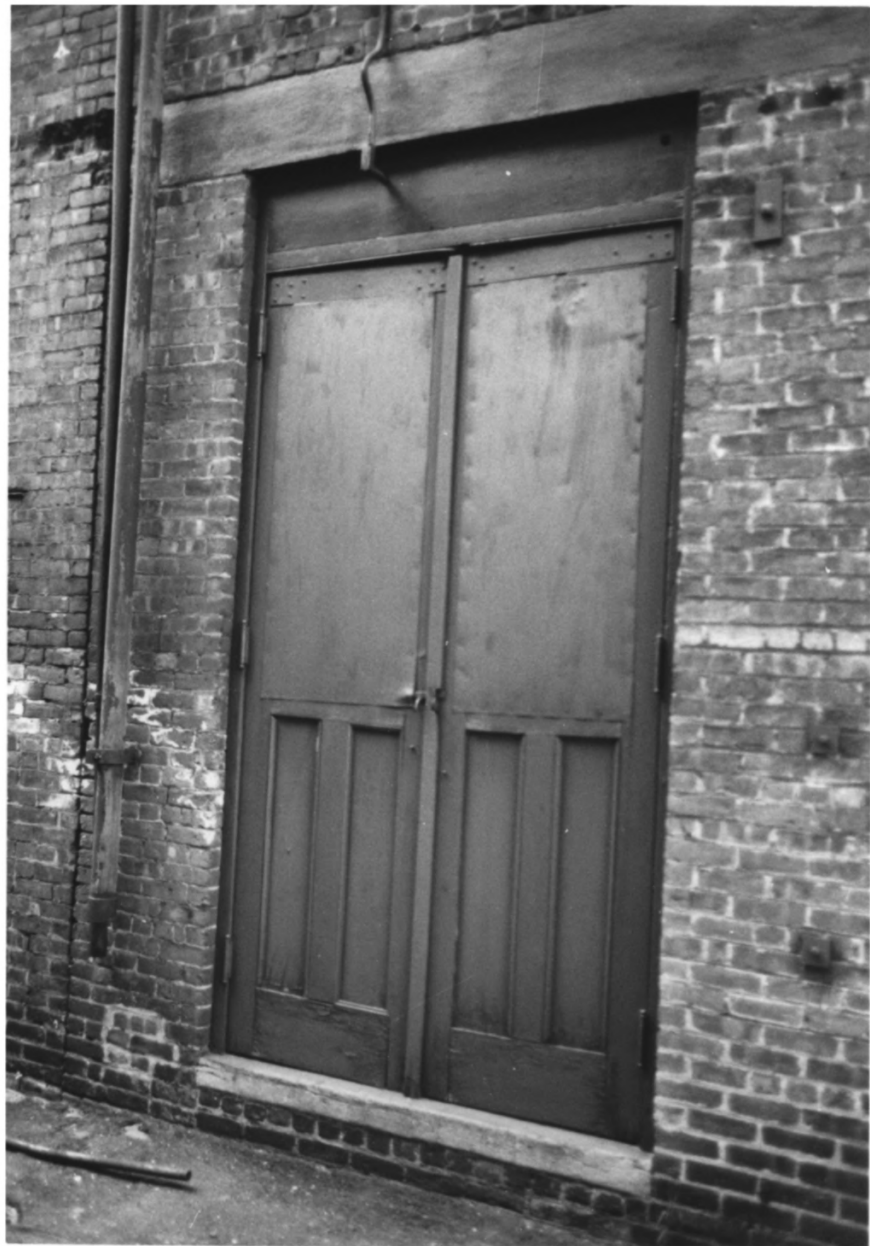


(Hudson County)

Photo #     . KEUFFEL AND ESSER COMPLEX, Hoboken, N.J.  
View of engine houses and rear intersection of Building  
B with rear extension.

1985





(Hudson County)

Photo #     . KEUFFEL AND ESSER COMPLEX, Hoboken, N.J.  
Paired doors to former engine/power house. Located  
in Courtyard at rear of Building B.

1985



(Hudson County)

Photo #     . KEUFFEL AND ESSER COMPLEX, Hoboken, N.J.  
West elevation of powerhouse at left, Rear of Building  
B at center, and north elevation of Building A at right.

1985



(Hudson County)

Photo #     . KEUFFEL AND ESSER COMPLEX, Hoboken, N.J.

Detail of Buildings D and Dx, with post-war additions,  
located at north end on Grand Street elevation.

1985



KEUFFEL AND ESSER COMPLEX, HOBOKEN, NJ (Hudson County)  
View of smokestack and powerhouse, looking east

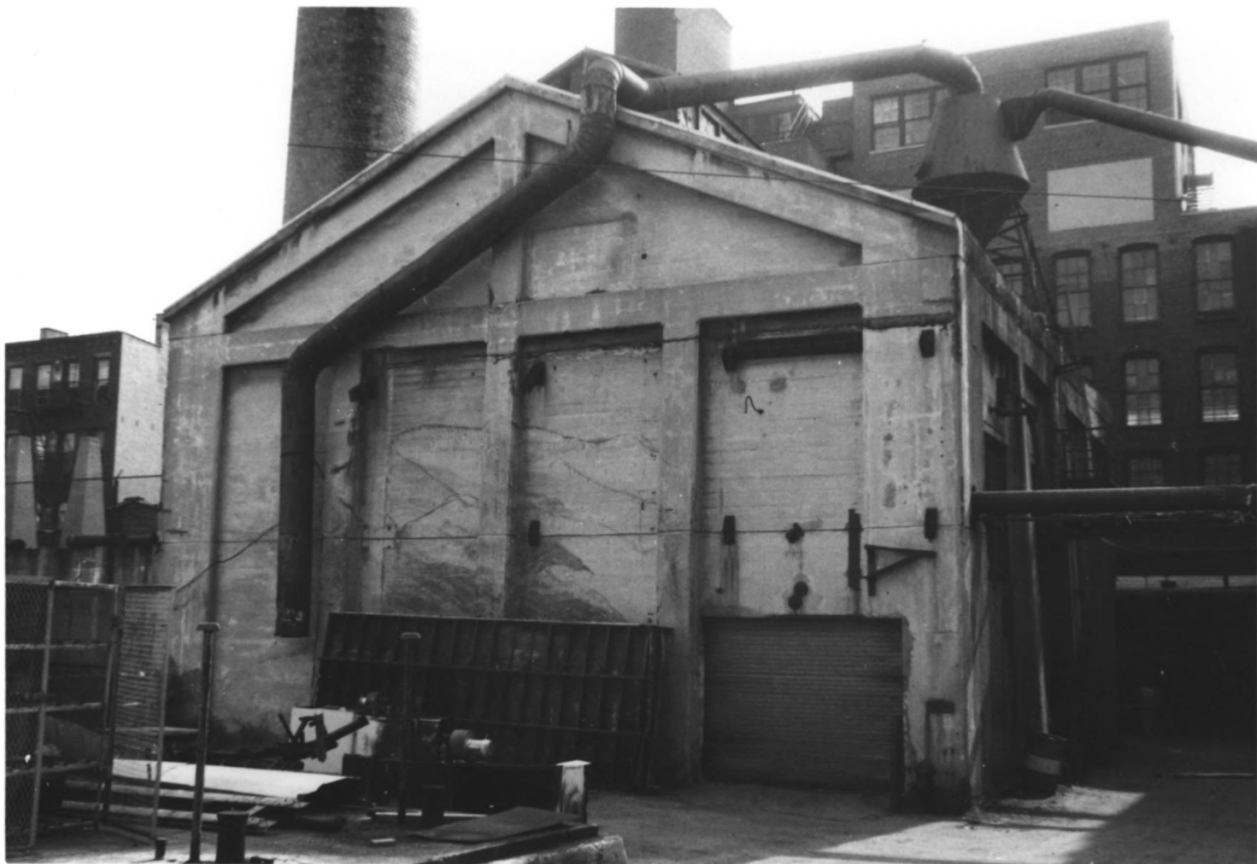
1985





KEUFFEL AND ESSER COMPLEX, HOBOKEN, NJ (Hudson County)  
Base of chimney, and powerhouse. View  
looking ESE.

1985



(Hudson County)

Photo #     . KEUFFEL AND ESSER COMPLEX, Hoboken, N.J.  
Reinforced concrete powerhouse, west elevation. Rear  
of Building Dx visible behind powerhouse.

1945



(Hudson County)

Photo #     . KEUFFEL AND ESSER COMPLEX, Hoboken, N.J.  
Clerestory roof on old engine house, looking to south  
elevation of reinforced concrete powerhouse. Rear of  
Building D at right.

1985



KEUFFEL AND ESSER COMPLEX, HOBOKEN, NJ (Hudson County)  
Rear of Building Dx, miscellaneous structures  
View looking east

1985





KEUFFEL AND ESSER COMPLEX, HOBOKEN, NJ (Hudson County)  
Derelict frame wing adjoining Building Dx,  
Adams Street. View looking west.

1985



(Hudson County)

Photo #     . KEUFFEL AND ESSER COMPLEX, Hoboken, N.J.  
Clock Tower Building, Third Street elevation, view  
looking west.

1985



(Hudson County)

Photo #     . KEUFFEL AND ESSER COMPLEX, Hoboken, N.J.  
Clock Tower Building, intersection of 3rd & Adams Sts.  
View looking west.

1985



KEUFFEL AND ESSER COMPLEX, HOBOKEN, NJ (Hudson County)  
Clock Tower Building, west elevation  
View looking NNE. Jefferson St. Elevation

1985





(Hudson County)

Photo #         . KEUFFEL AND ESSER COMPLEX, Hoboken, N.J.  
Hallway, Building B, showing "infilled" sheetrock  
partitions creating illegal "loft" units by previous owner

1985



Photo #     . Keuffel and Esser Complex, Hoboken, N.J. (Hudson County)  
Typical floor, Building D

1985



Photo #     . Keuffel and Esser Complex, Hoboken, N.J. (Hudson County)  
Ground Floor, Building A.

1985



(Hudson County)

Photo #     . Keuffel and Esser Complex, Hoboken, N.J.  
Typical floor, Building C (Concrete overlay on wood)

1985





Photo #      . Keuffel and Esser Complex, Hoboken, N.J. *(Hudson County)*  
Typical floor, Building C

1985



(Hudson County)

Photo #         . KEUFFEL AND ESSER COMPLEX, Hoboken, N.J.

Wood stair, typical of stairs in Buildings A, B, & C

1985



Photo #          . KEUFFEL AND ESSER COMPLEX, Hoboken, N.J.  
Representative Interior Space, Building Dx  
(Hudson County)

1985



(Hudson County)

Photo #     . Keuffel and Esser Complex, Hoboken, N.J.

Detail of steel columns, Building Dx

1985

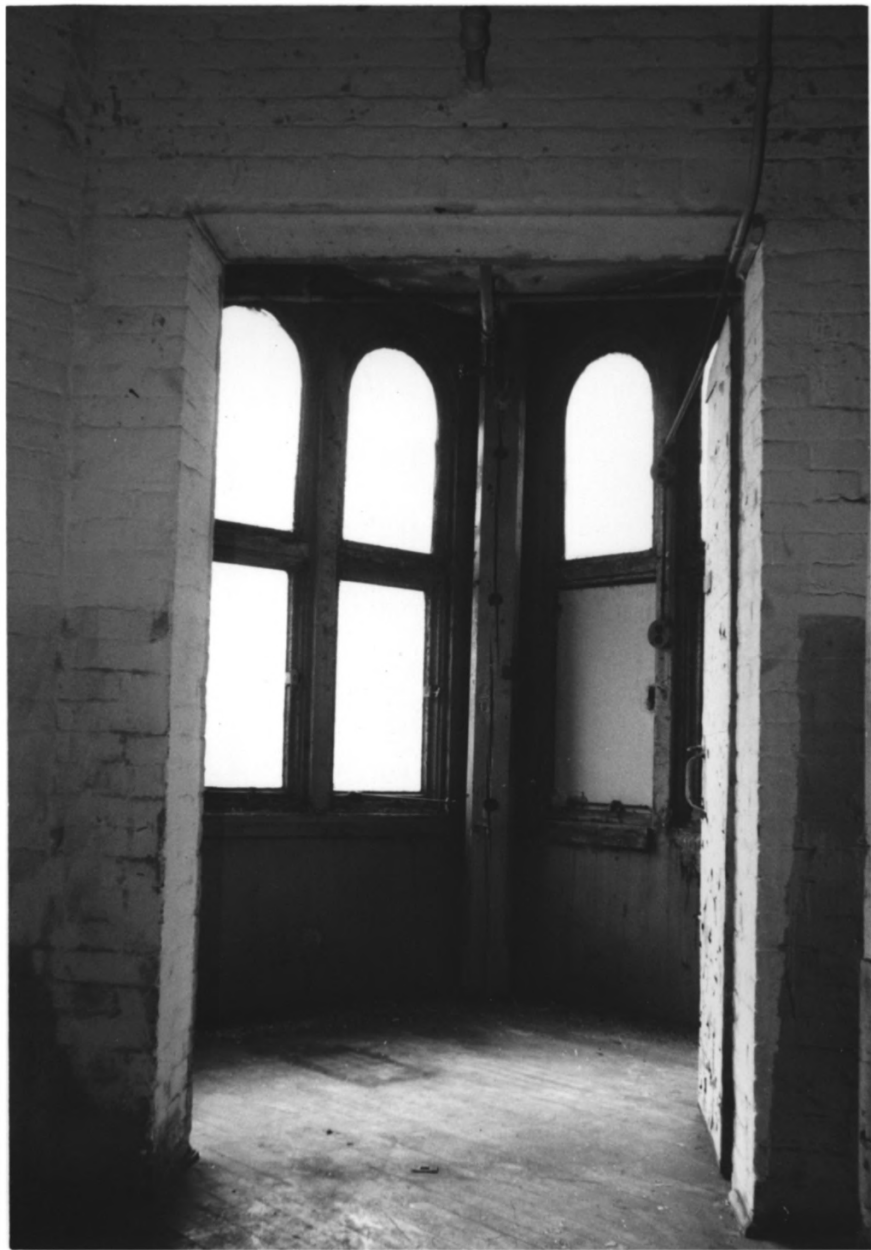




(Hudson County)

Photo #     . KEUFFEL AND ESSER COMPLEX, Hoboken, N.J.  
Representative view of existing window conditions

1985



(Hudson County)

Photo #     . KEUFFEL AND ESSER COMPLEX, Hoboken, N.J.  
Interior view, third story of projecting tower on  
Building C at corner of Third and Grand Sts.

1985



Photo #          . KEUFFEL AND ESSER COMPLEX, Hoboken, N.J. (Hudson County)  
Window Detail, 3rd floor tower, Building C

1985