

UNITED STATES DEPARTMENT OF THE INTERIOR
NATIONAL PARK SERVICE

**NATIONAL REGISTER OF HISTORIC PLACES
PROPERTY PHOTOGRAPH FORM**

FOR NPS USE ONLY

RECEIVED SEP 9 1975

OCT 29 1975

DATE ENTERED

SEE INSTRUCTIONS IN *HOW TO COMPLETE NATIONAL REGISTER FORMS*
TYPE ALL ENTRIES ENCLOSE WITH PHOTOGRAPH

1 NAME

HISTORIC Barker Dam

AND/OR COMMON

2 LOCATION

CITY, TOWN	<input checked="" type="checkbox"/> VICINITY OF	COUNTY	STATE
Joshua Tree National Monument	Twentynine Palms	Riverside	California

3 PHOTO REFERENCE

PHOTO CREDIT National Park Service photo

DATE OF PHOTO February 1973

NEGATIVE FILED AT Joshua Tree National Monument
Twentynine Palms, California

4 IDENTIFICATION

DESCRIBE VIEW, DIRECTION, ETC. IF DISTRICT. GIVE BUILDING NAME & STREET

PHOTO NO 1 of 3

View looking west from inside dam basin at low water level.

(In the immediate foreground is remains of a rubble wall laid without mortar, perhaps to keep stock out of area behind dam at times of low water)



UNITED STATES DEPARTMENT OF THE INTERIOR
NATIONAL PARK SERVICE

NATIONAL REGISTER OF HISTORIC PLACES
PROPERTY PHOTOGRAPH FORM

FOR NPS USE ONLY

RECEIVED SEP 9 1975

DATE ENTERED

OCT 29 1975

SEE INSTRUCTIONS IN *HOW TO COMPLETE NATIONAL REGISTER FORMS*
TYPE ALL ENTRIES ENCLOSE WITH PHOTOGRAPH

1 NAME

HISTORIC Barker Dam

AND/OR COMMON

2 LOCATION

CITY, TOWN	<input checked="" type="checkbox"/> VICINITY OF	COUNTY	STATE
<u>Joshua Tree National Monument</u>	<u>Twentynine Palms</u>	<u>Riverside</u>	<u>California</u>

3 PHOTO REFERENCE

PHOTO CREDIT National Park Service photo

DATE OF PHOTO February 1973

NEGATIVE FILED AT Joshua Tree National Monument
Twentynine Palms, California

4 IDENTIFICATION

DESCRIBE VIEW, DIRECTION, ETC. IF DISTRICT, GIVE BUILDING NAME & STREET

Looking eastward at downhill face of Barker Dam, showing original construction by C.O. Barker and later addition by W.F. Keys

PHOTO NO

2 of 3



UNITED STATES DEPARTMENT OF THE INTERIOR
NATIONAL PARK SERVICE

**NATIONAL REGISTER OF HISTORIC PLACES
PROPERTY PHOTOGRAPH FORM**

FOR NPS USE ONLY

RECEIVED SEP 9 1975

DATE ENTERED OCT 29 1975

SEE INSTRUCTIONS IN *HOW TO COMPLETE NATIONAL REGISTER FORMS*
TYPE ALL ENTRIES ENCLOSE WITH PHOTOGRAPH

1 NAME

HISTORIC Barker Dam

AND/OR COMMON

2 LOCATION

CITY, TOWN	<input checked="" type="checkbox"/> VICINITY OF	COUNTY	STATE
Joshua Tree National Monument	Twentynine Palms	Riverside	California

3 PHOTO REFERENCE

PHOTO CREDIT National Park Service photo

DATE OF PHOTO February 1973

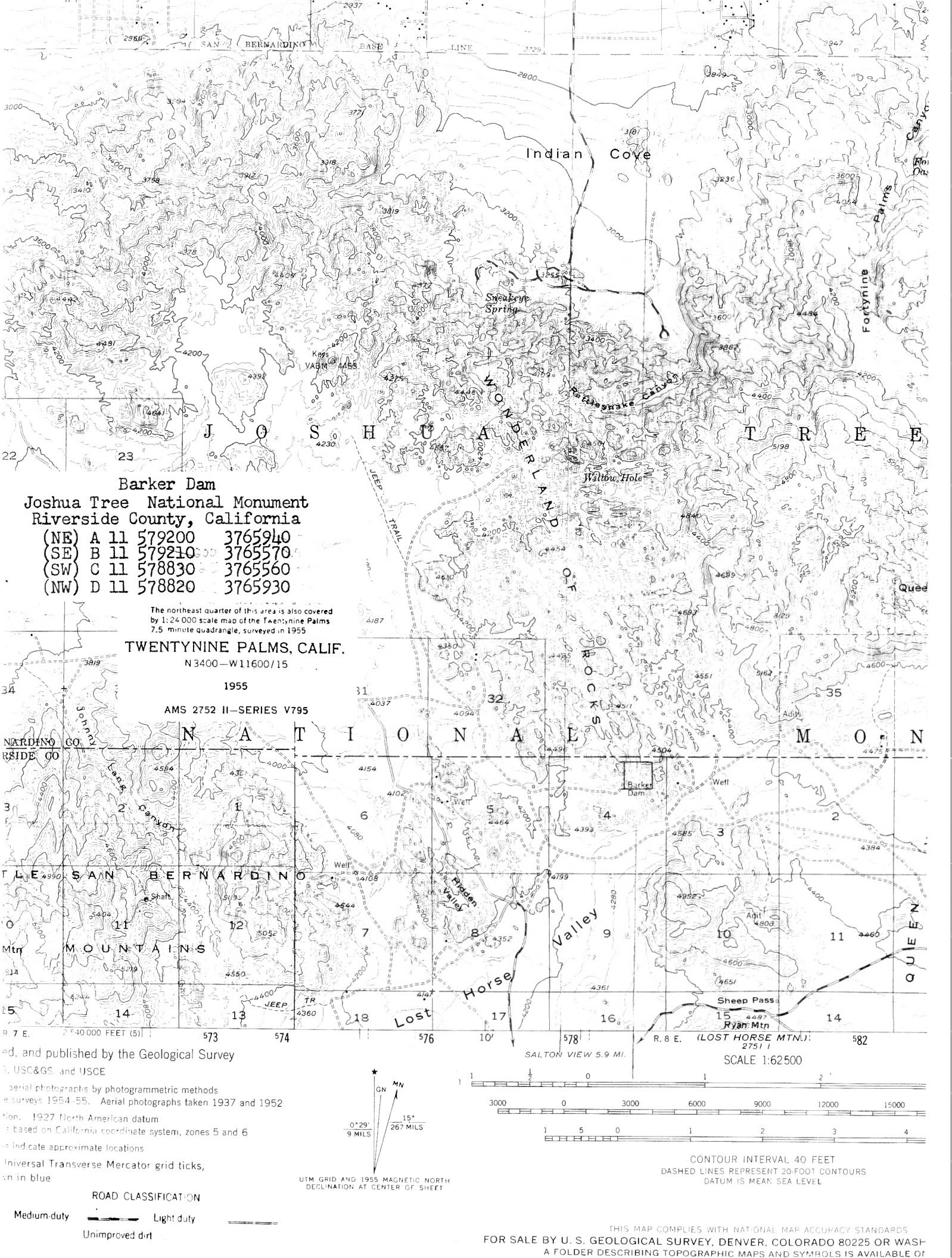
NEGATIVE FILED AT Joshua Tree National Monument
Twentynine Palms, California

4 IDENTIFICATION

DESCRIBE VIEW, DIRECTION, ETC. IF DISTRICT, GIVE BUILDING NAME & STREET
Stock watering tank west (downstream) from Barker Dam

PHOTO NO

3 1/3



Barker Dam
Joshua Tree National Monument
Riverside County, California

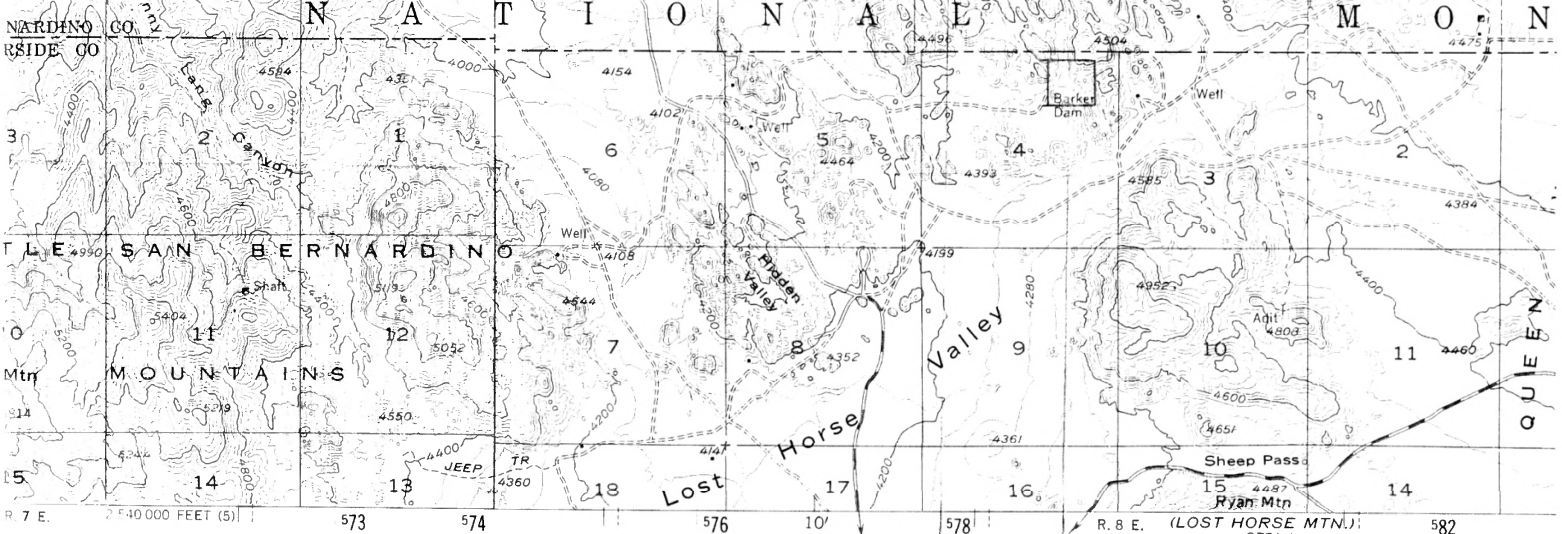
(NE)	A 11	579200	3765940
(SE)	B 11	579210	3765570
(SW)	C 11	578830	3765560
(NW)	D 11	578820	3765930

The northeast quarter of this area is also covered by 1:24 000 scale map of the Twentynine Palms 7.5 minute quadrangle, surveyed in 1955

TWENTYNINE PALMS, CALIF.
 N 3400—W 11600/15

1955

AMS 2752 II—SERIES V795



ed, and published by the Geological Survey

N, USCG&GS, and IJSC

erial photographs by photogrammetric methods
 e surveys 1954-55. Aerial photographs taken 1937 and 1952

Mon. 1927 North American datum

based on California coordinate system, zones 5 and 6

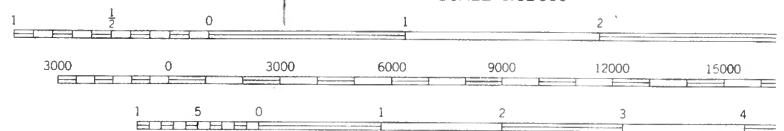
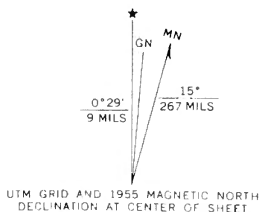
is indicate approximate locations

Universal Transverse Mercator grid ticks,

in blue

ROAD CLASSIFICATION

Medium-duty Light duty
 Unimproved dirt



SCALE 1:62500

CONTOUR INTERVAL 40 FEET
 DASHED LINES REPRESENT 20-FOOT CONTOURS
 DATUM IS MEAN SEA LEVEL

THIS MAP COMPLIES WITH NATIONAL MAP ACCURACY STANDARDS
 FOR SALE BY U. S. GEOLOGICAL SURVEY, DENVER, COLORADO 80225 OR WASH-
 A FOLDER DESCRIBING TOPOGRAPHIC MAPS AND SYMBOLS IS AVAILABLE OF