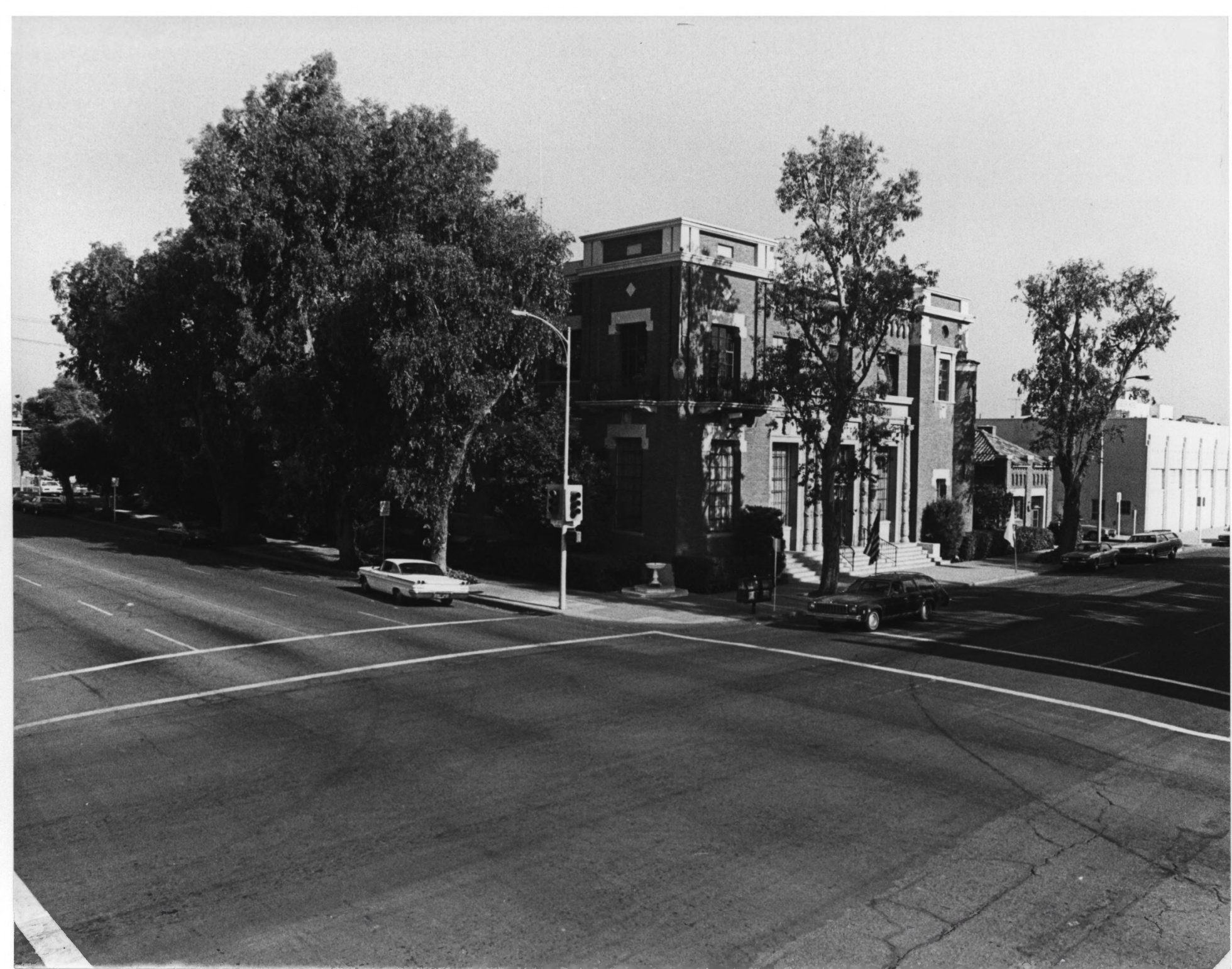




Bakersfield Californian #398

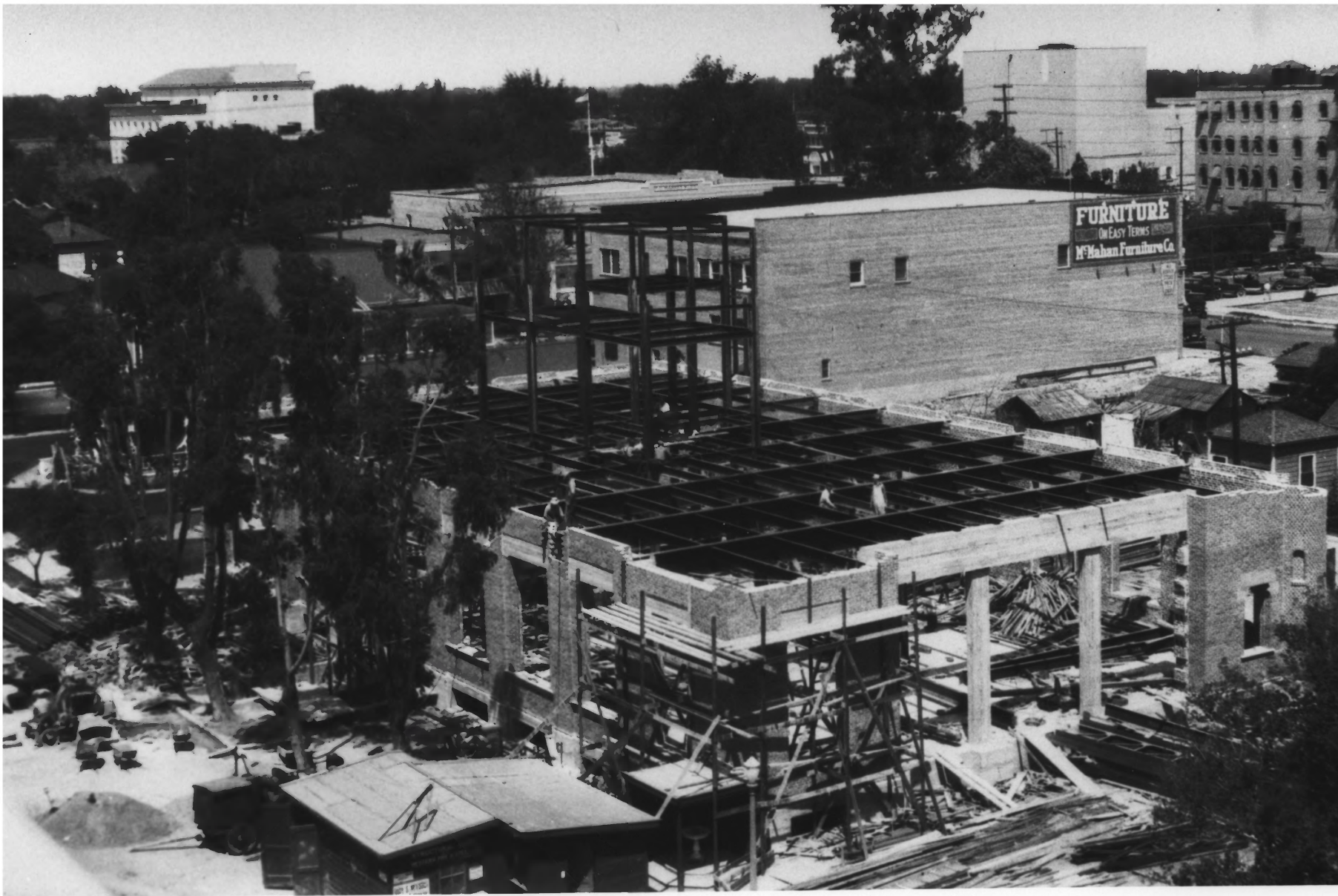
- 1) The Bakersfield Californian Building
- 2) Bakersfield, California
- 3) Photographer unknown
- 4) Approximate date photograph taken 1927
- 5) Negative located at Kern County Museum
- 6) View of southeast corner of building,
camera aimed in northwest direction
- 7) Photo #1 of 30



- 1) The Bakersfield Californian Building
- 2) Bakersfield, California
- 3) Photographer, Alan Ferguson
- 4) Photo taken July, 1982
- 5) Negative located at The Bakersfield Californian, 1707 Eye St. Bakersfield
- 6) View of southeast corner of the bldg.
- 7) Photo #2 of 30



- 1) The Bakersfield Californian Building
- 2) Bakersfield, California
- 3) Photographer unknown
- 4) Photo taken approx. 1926
- 5) Negative located Kern County Museum
- 6) View of construction of building in progress showing northwest corner of building (Camera angle southeast)
- 7) Photo #3 *of 30*



- 1) The Bakersfield Californian Building
- 2) Bakersfield, California
- 3) Photographer unknown
- 4) Photo taken approx. 1926
- 5) Negative located Kern County Museum
- 6) View of construction of building in progress showing southeast corner of building (Camera angle northwest). McMahan's Furniture in background and still there
- 7) Photo #4 of 30



- 1) The Bakersfield Californian Building
- 2) Bakersfield, California
- 3) Photographer unknown
- 4) Photo taken approx. 1927
- 5) Negative located Kern County Museum
- 6) View of southeast corner of building,
camera angle northwest
- 7) Photo #5 of 30



- 1) The Bakersfield Californian Building
- 2) Bakersfield, California
- 3) Photographer unknown
- 4) Photo taken approx. 1926
- 5) Negative located Kern County Museum
- 6) View of southeast corner of building,
camera angle northwest.
- 7) Photo #6 of 30



- 1) The Rest House
- 2) Bakersfield, California
- 3) Photographer unknown
- 4) Photo taken approx. 1926
- 5) Negative located Kern County Museum
- 6) View of northeast corner of The Rest House- building used by women visiting downtown Bakersfield
- 7) Photo #7 of 30



- 1) The Rest House
- 2) Bakersfield, California
- 3) Photographer unknown
- 4) Photo taken approx. 1950's
- 5) Negative located Kern County Museum
- 6) View of northeast corner of Rest House-
1938 Addition partially visible in
background, camera angle southwest
- 7) Photo #8 of 30



EYE ST.
1700 →

- 1) The Bakersfield Californian Building
- 2) Bakersfield, California
- 3) Photographer unknown
- 4) Photo taken approx. 1952-53
- 5) Negative located Kern County Museum
- 6) View of southeast corner of building while post-earthquake work (brick removal, gunnited, brick replaced) performed.
- 7) Photo #9 of 30



The Bakersfield Californian

ESTABLISHED
1865

- 1) The Bakersfield Californian Building
- 2) Bakersfield, California
- 3) Photographer, Alan Ferguson
- 4) Taken July, 1982
- 5) Negative located 1707 Eye St., The
Bakersfield Californian
- 6) View of front of building, camera
direction due west
- 7) Photo #10 of 30



- 1) The Bakersfield Californian Building
- 2) Bakersfield, California
- 3) Photographer, Alan Ferguson
- 4) Taken July, 1982
- 5) Negative located at The Bakersfield Californian offices, 1707 Eye St., Bakersfield.
- 6) View of front (east) and north sides of The Bakersfield Californian Bldg. Camera directed in southwest direction

At northeast corner is The Rest House. The tall, small white structure rising out of the roof of The Rest House is the stairway fire escape built in 1973. The tall, brick addition built in 1938 is twenty four feet behind The Rest House. The 1973 addition, with its truck loading bay, is attached immediately behind the 1938 addition.

- 7) Photo #11 of 30



- 1) The Bakersfield Californian Building
- 2) Bakersfield, California
- 3) Photographer, Alan
- 4) Photograph taken, July 1982
- 5) Negative at The Bakersfield Californian
1707 Eye St., Bakersfield
- 6) View of back (west) side of building.
Structure forming right portion of the
back wall was built in 1964. The left
portion of the wall was built in 1973.

The structure jutting out at the junc-
ture of the two additions is a loading
dock used to accept large deliveries of
newsprint, etc.
- 7) Photo #12 of 30



- 1) The Bakersfield Californian Building
- 2) Bakersfield, California
- 3) Photographer, Alan Ferguson
- 4) Photograph taken July 1982
- 5) Negative at The Bakersfield Californian
1707 Eye St., Bakersfield
- 6) View of the 17th St. (south) side of the building. Corrugated panels are rolled up to reveal windows through which public may watch the newspaper being printed. To the right of the third corrugated bay, marked by a jutting out of the building (just to left of tree) is the juncture of the original building and the 1964 Addition. That part of the building in the foreground is the 1964 addition. Camera direction westward.
- 7) Photo #13 of 30



- 1) The Bakersfield Californian Building
- 2) Bakersfield, California
- 3) Photographer, Alan Ferguson
- 4) Photograph taken, July 1982
- 5) Negative located The Bakersfield Californian, 1707 Eye St., Bakersfield
- 6) View of the southeast corner of the building. Water fountain visible was dedicated by Mr. Harrell to Mr. J.M. Jameson. Front of building depicted and to its right, (northern side), is The Rest House.
- 7) Photo #14 of 30



- 1) The Bakersfield Californian Building
- 2) Bakersfield, California
- 3) Photographer, Alan Ferguson
- 4) Photograph taken July, 1982
- 5) Negative located at The Bakersfield Californian, 1707 Eye St., Bakersfield
- 6) View of area between The Rest House (on the left) and the Newspaper Building, both built in 1926. Camera directed west.
- 7) Photo #15 of 30

ee Bakersfield California

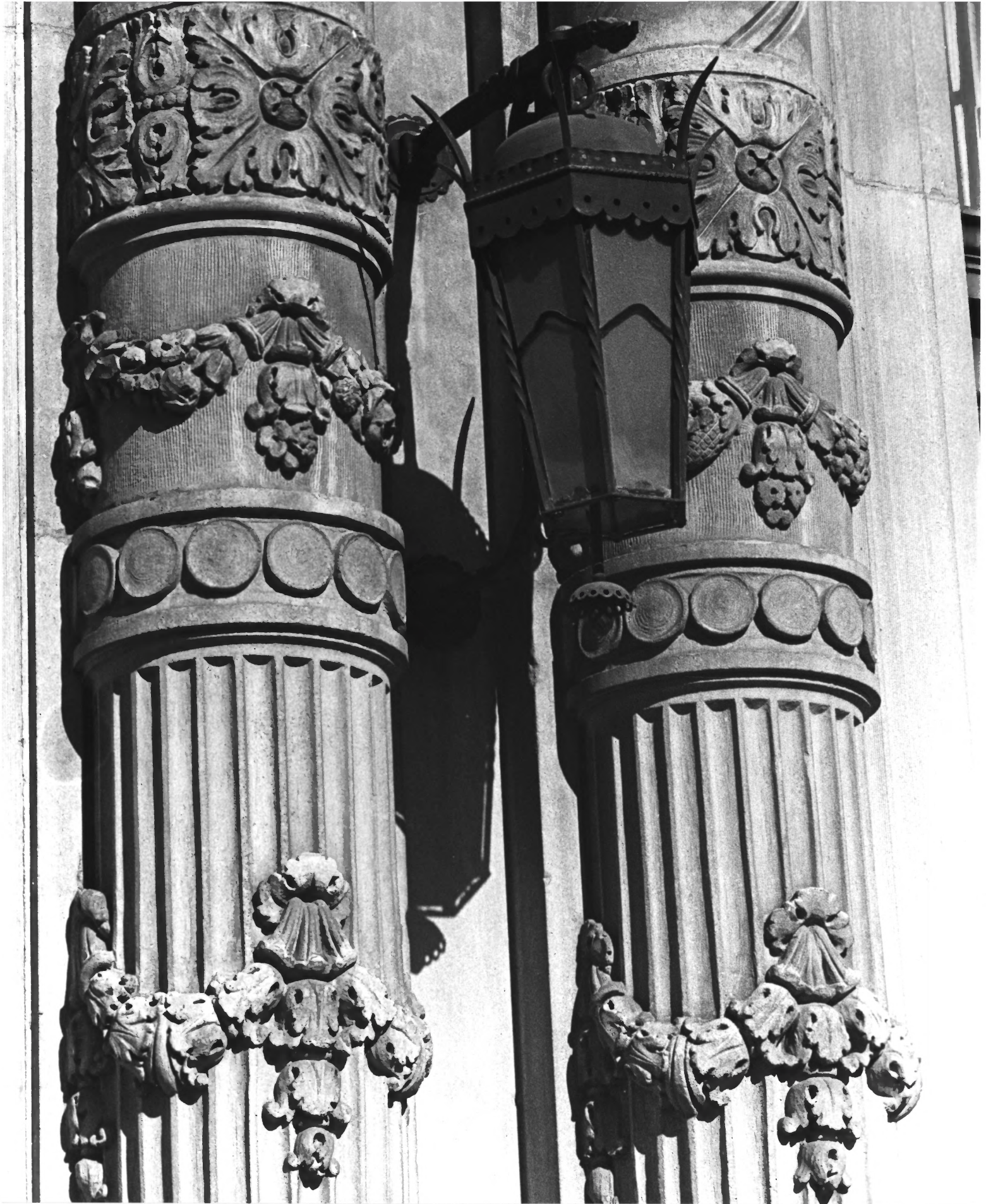
ESTABLISHED
1866



- 1) The Bakersfield Californian Building
- 2) Bakersfield, California
- 3) Photographer, Alan Ferguson
- 4) Taken July, 1982
- 5) Negative at The Bakersfield Californian,
1707 Eye St., Bakersfield
- 6) Camera angle directly west, capturing
the grand entrance to the building
- 7) Photo #16 of 30



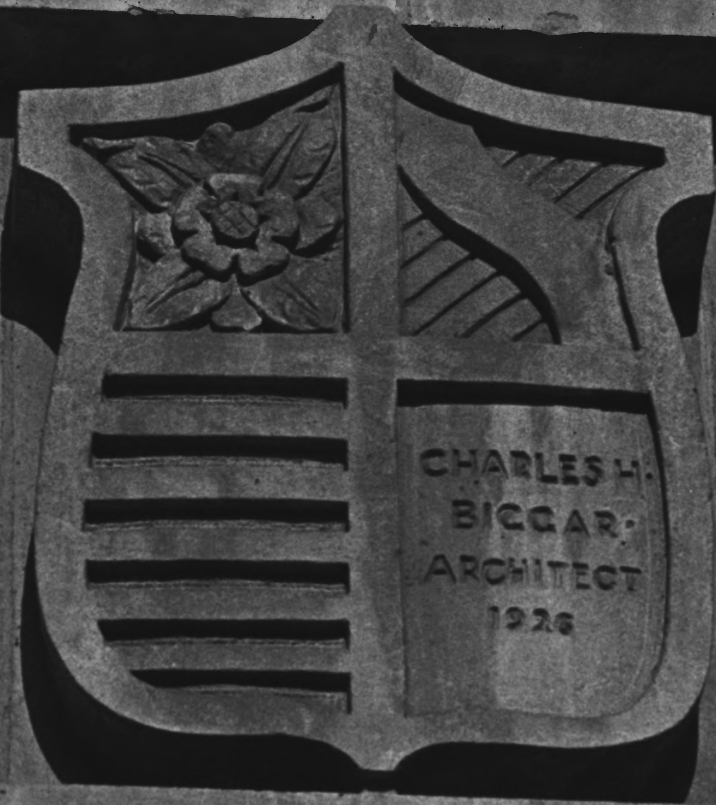
- 1) The Bakersfield Californian Building
- 2) Bakersfield, California
- 3) Photographer, Alan Ferguson
- 4) Taken July, 1982
- 5) Negative at The Bakersfield Californian
1707 Eye St., Bakersfield
- 6) View shows base of half-columns on the
front (east side) of the building's
grand entrance
- 7) Photo #17 of 30



- 1) The Bakersfield Californian Building
- 2) Bakersfield, California
- 3) Photographer, Alan Ferguson
- 4) Taken July, 1982
- 5) Negative at The Bakersfield Californian,
1707 Eye St., Bakersfield
- 6) View of middle portion and lamp of the
half-columns on the front (east side) of
the building's grand entrance.
- 7) Photo #18 of 30

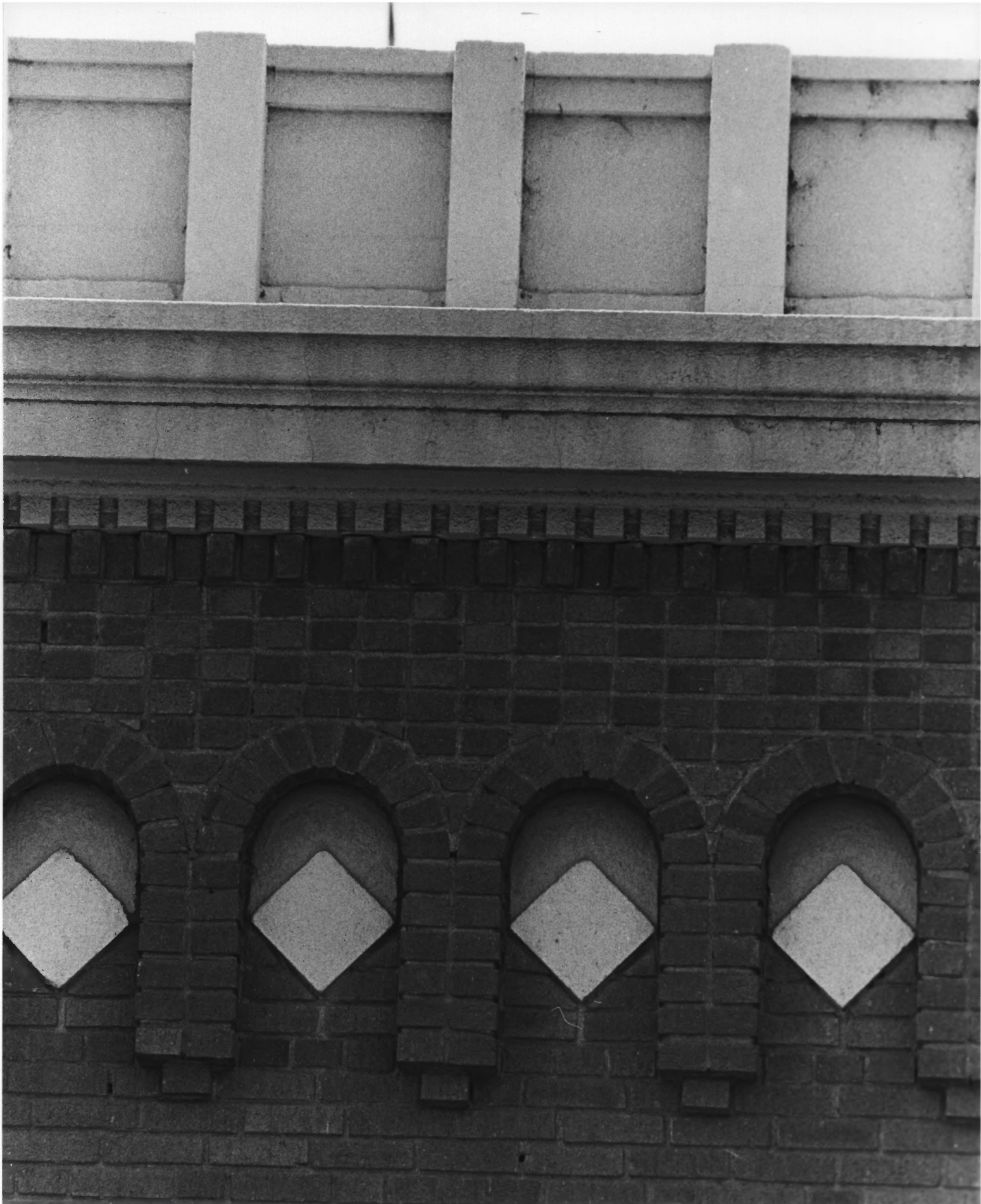


- 1) The Bakersfield Californian Building
- 2) Bakersfield, California
- 3) Photographer, Alan Ferguson
- 4) Taken July, 1982
- 5) Negative at The Bakersfield Californian
1707 Eye St., Bakersfield.
- 6) View of Corinthian elements at the top
of half-columns on the front (east side)
of the building's grand entrance.
- 7) Photo #19 of 30



CHARLES H.
BIGGAR
ARCHITECT
1926

- 1) The Bakersfield Californian Building
- 2) Bakersfield, California
- 3) Photographer, Alan Ferguson
- 4) Taken July, 1982
- 5) Negative at The Bakersfield Californian
1707 Eye St., Bakersfield
- 6) View of shield ornamenting grand
entrance to the building on east side.
- 7) Photo #20 *of 30*



- 1) The Bakersfield Californian Building
- 2) Bakersfield, California
- 3) Photographer, Alan Ferguson
- 4) Taken July, 1982
- 5) Negative at The Bakersfield Californian
1707 Eye St., Bakersfield
- 6) Close up of cornice and brick arches
on the elevated portion on the front
(east side) of the building
- 7) Photo #21 of 30



- 1) The Bakersfield Californian Building
- 2) Bakersfield, California
- 3) Photographer, Alan Ferguson
- 4) Taken July, 1982
- 5) Negative at The Bakersfield Californian
1707 Eye St., Bakersfield
- 6) View of tower at the elevated portion
of the southeast corner of the building
- 7) Photo #22 *of 30*



- 1) The Bakersfield Californian Building
- 2) Bakersfield, California
- 3) Photographer, Alan Ferguson
- 4) Taken July, 1982
- 5) Negative at The Bakersfield Californian
1707 Eye St., Bakersfield
- 6) View of water fountain located at the
southeast corner of the property
- 7) Photo #23 *of 30*



- 1) The Bakersfield Californian Building
- 2) Bakersfield, California
- 3) Photographer, Alan Ferguson
- 4) Taken July, 1982
- 5) Negative located at The Bakersfield Californian, 1707 Eye St., Bakersfield
- 6) View of tower and turret at the northeast corner of the building
- 7) Photo #24 of 30

ERECTED AND DEDICATED
TO THE SERVICE OF
THE WOMEN OF KERN COUNTY
BY
ALFRED HARRELL
1926

- 1) The Bakersfield Californian Building
- 2) Bakersfield, California
- 3) Photographer, Alan Ferguson
- 4) Taken July, 1982
- 5) Negative at The Bakersfield Californian
1707 Eye St., Bakersfield
- 6) Close up of plaque on the front (east)
side of The Rest House
- 7) Photo #25 of 30

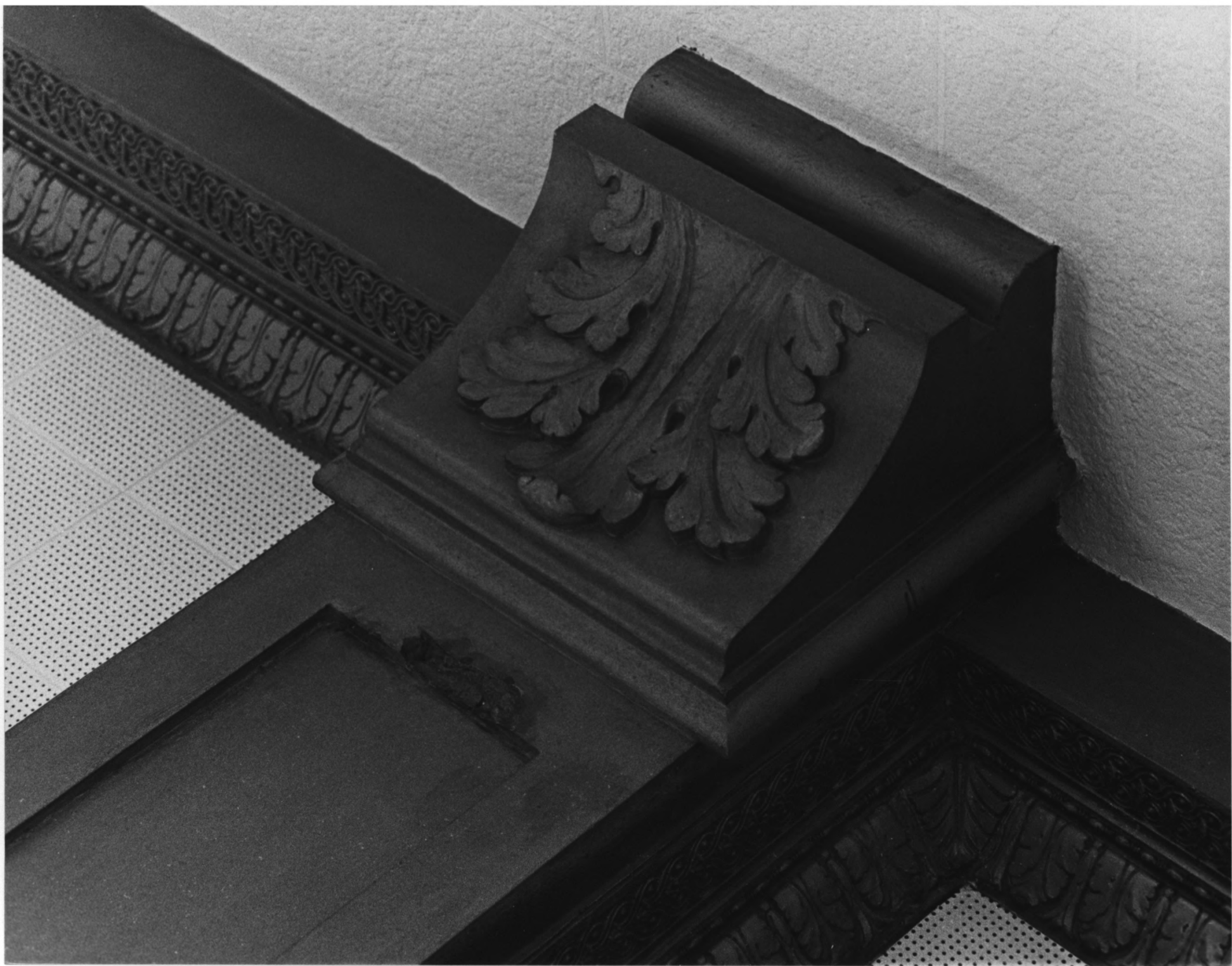


CASHIER

CASHIER

1982
WORLD
ALMANAC
\$1.50

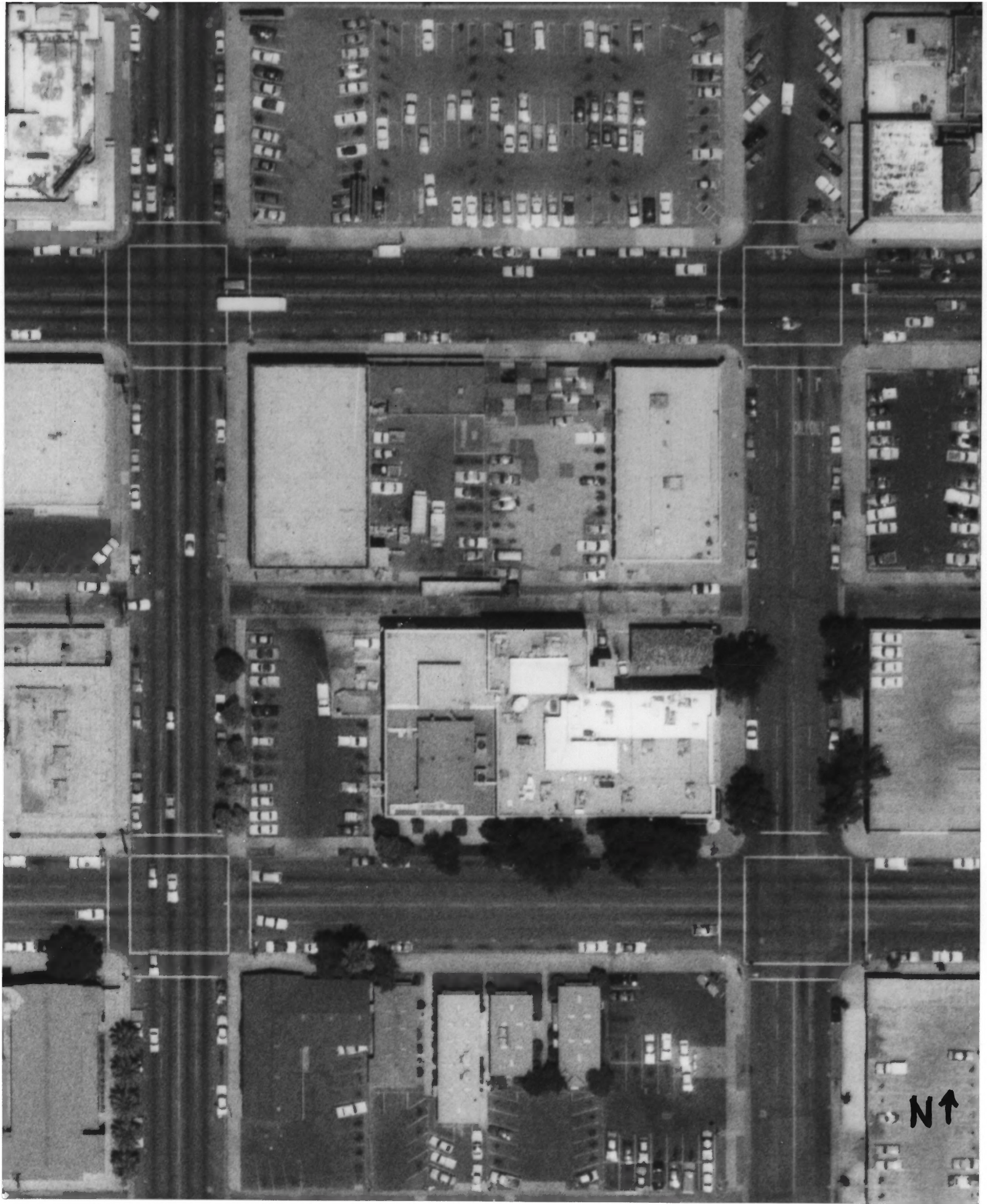
- 1) The Bakersfield Californian Building
- 2) Bakersfield, California
- 3) Photographer, Alan Ferguson
- 4) Taken July, 1982
- 5) Negative at The Bakersfield Californian
1707 Eye St., Bakersfield
- 6) View of the first floor lobby of the
building, looking westward, from just
inside the main entrance to the building
- 7) Photo #26 of 30



- 1) The Bakersfield Californian Building
- 2) Bakersfield, California
- 3) Photographer, Alan Ferguson
- 4) Taken July, 1982
- 5) Negative at The Bakersfield Californian
1707 Eye St. Bakersfield
- 6) Close up of ceiling of first floor
lobby of the building
- 7) Photo #27 *of 30*



- 1) The Bakersfield Californian Building
- 2) Bakersfield, California
- 3) Photographer, Alan Ferguson
- 4) Taken, July, 1982
- 5) Negative at The Bakersfield Californian
1707 Eye St., Bakersfield
- 6) View of back (westward) end of lobby
on first floor of the building
- 7) Photo #28 of 30



N↑

- 1) The Bakersfield Californian Building
- 2) Bakersfield, California
- 3) Photographer, Western Photoair, Inc.
- 4) Taken, 1981
- 5) Negatives at Western Photoair, Inc.
- 6) Aerial view of Block 275, City of Bakersfield, California. The Bakersfield Californian being located on lots 5-8 the southern or lower half of the block in the center of the picture
- 7) Photo #29 of 30



- 1) The Bakersfield Californian Building
- 2) Bakersfield, California
- 3) Photographer, John Harte
- 4) Photo taken August, 1982
- 5) Negative located The Bakersfield
Californian, 1707 Eye St., Bakersfield
- 6) View of southwest corner of the building
showing break in architecture produced
with the 1964 addition
- 7) Photo #30 of 30