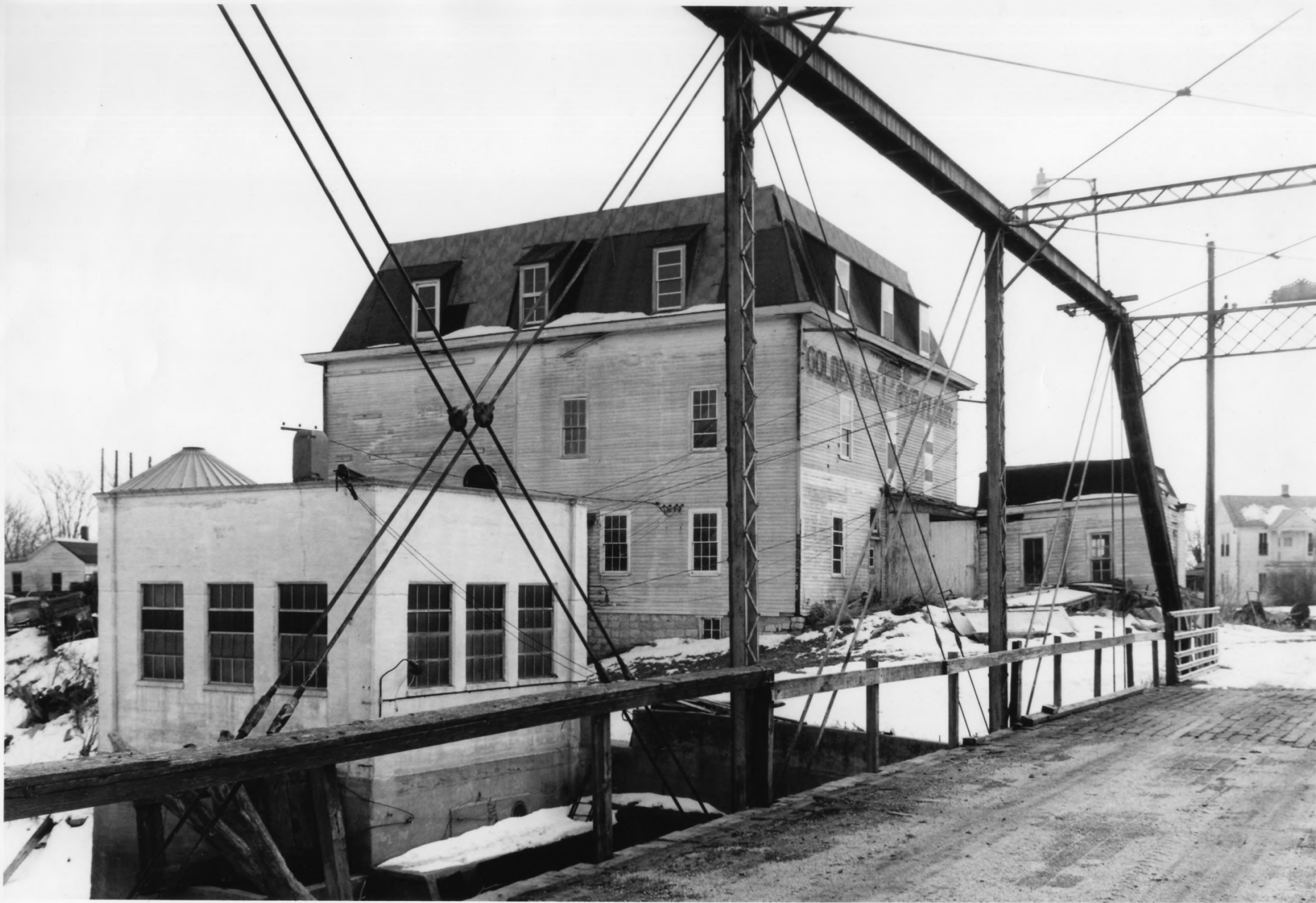




DEC 27 1978

#1
DeWitt Flour Mills and King Iron
Bridge
Gage County, Nebraska
Photo by D. Murphy, Lincoln, Ne.
March, 1975. DM7503a:30
General view of the mill building
and the bridge looking east

MAY 2 1977



#2

DeWitt Flour Mills and King Iron
Bridge

Gage County, Nebraska

Photo by D. Murphy, Lincoln, Ne.

March, 1975

General view of the mill building
from the bridge, showing the

electric power-house, looking
south

MAY 2 1977

DEC 27 1978



#3

DeWitt Flour Mills and King Iron
Bridge

Gage County, Nebraska

Photo by D. Murphy, Lincoln, Ne.

March, 1975. DM 7503a:21

General view of the mill building
looking north, showing the small

mill office at left and the long
shed warehouse addition along
the south facade.

DEC 27 1978

MAY 2 1977



DEC 27 1973

#4

MAY 2 1977

Dewitt Flour Mills and King Iron
Bridge

Gage County, Nebraska

Photo by D. Murphy, Lincoln, Ne.

March, 1975. DM 7503c:16

General view of the bridge looking
north-northeast.



#5

DeWitt Flour Mills and King Iron
Bridge

Gage County, Nebraska

Photo by Carl Jones, Nebraska State
Historical Society

August, 1972. NSHS 7208/1:2

Detail view of the bridge and the

smaller Pratt Pony Truss bridge,
showing the steel encased concrete
piers; looking north-northwest.

MAY 2 1977

DEC 27 1978

1887
KING IRON BRIDGE Co
CLEVELAND, O.



#6

DeWitt Flour Mills and King Iron
Bridge

Gage County, Nebraska

Photo by D. Murphy, Lincoln, Ne.
March, 1975.

Detail view of the decorative name-
and-date plate mounted on the

south portal strut, looking north-
northwest

DEC 27 1978

MAY 2 1977



#7

DeWitt Flour Mills and King Iron
Bridge

Gage County, Nebraska

Photo by Carl Jones, Nebraska State
Historical Society

August, 1972. NSHS 7208/1:9

Detail view of the bridge showing
the diagonal cross ties, looking

west.

MAY 2 1977

DEC 27 1978



78
DeWitt Flour Mills and King Iron
Bridge
Gage County, Nebraska
Photo by Carl Jones, Nebraska State
Historical Society
August, 1972. NSHS 7208/1:8
Detail view of the bridge showing

the connection of the vertical
post, top chord, strut, top
lateral brace and diagonal brace,
looking northwest.

DEC 27 1978 MAY 2 1977



7807/3:9

1482-1488 51

DEC 6 1978

Photo #9

DeWitt Flour Mills and King Iron Bridge
Gage County, Nebraska

Photo by Janet Spencer, Nebraska State
Historical Society, July 1978 **DEC 27 1978**

NSHS # 7807/3:9

View of the miller's house, looking southwest



7807/3:10
LCB2-11 B S1

Photo #10

DeWitt Flour Mills and King Iron Bridge
Gage County, Nebraska

Photo by Janet Spencer, Nebraska
Historical Society, July 1978

NSHS # 7807/3:10

View of the Zwonechek house today looking
southwest.

DEC 6 1978

DEC 6 1978

DEC 27 1978



1807/3:11
182-9 8 51

Photo #11

DeWitt Flour Mills and King Iron Bridge
Gage County, Nebraska

Photo by Janet Spencer, Nebraska State

Historical Society, July 1978 **DEC 6 1978**

NSHS #7807/3:11

DEC 27 1978

View of the Zwonechek house looking
southeast with the miller's house in the
background.



7807/3:7

LCB2-13 B 51

DEC 27 1978

Photo #12

DeWitt Flour Mills and King Iron Bridge
Gage County, Nebraska

Photo by Janet Spencer, Nebraska State
Historical Society, July 1978

NSHS # 7807/3:7

DEC 6 1978

View of workmen's cottage looking northeast



7807/3:23 1482-10 B 81

Photo #13

DEC 27 1978

DeWitt Flour Mills and King Iron Bridge
Gage County, Nebraska

Photo by D. Murphy, Nebraska State
Historical Society, July 1978

NSHS # 7807/3:23

DEC 6 1978

View of the base of the electric power
house showing inlet and outlet flumes;
looking southeast.



Photo #14
DeWitt Flour Mills and King Iron Bridge
Gage County, Nebraska
Photo by D. Murphy, Nebraska State
Historical Society, July 1978

DEC 27 1978

DEC 6 1978

NSHS #7807/3:28
View of the remains of the steam engine house
and electric power room attached to the east
side of the mill, looking northwest,

7807/3:8 1482-15 8 81



Photo #15

DeWitt Flour Mills and King Iron Bridge
Gage County, Nebraska

DEC 27 1978

Photo by D. Murphy, Nebraska State

Historical Society, July 1978

NSHS #7807/3:18

DEC 6 1978

View of the dam remains looking northwest
past the base of the electric power house.

7807/3:18
LEB-2-10 B
S1

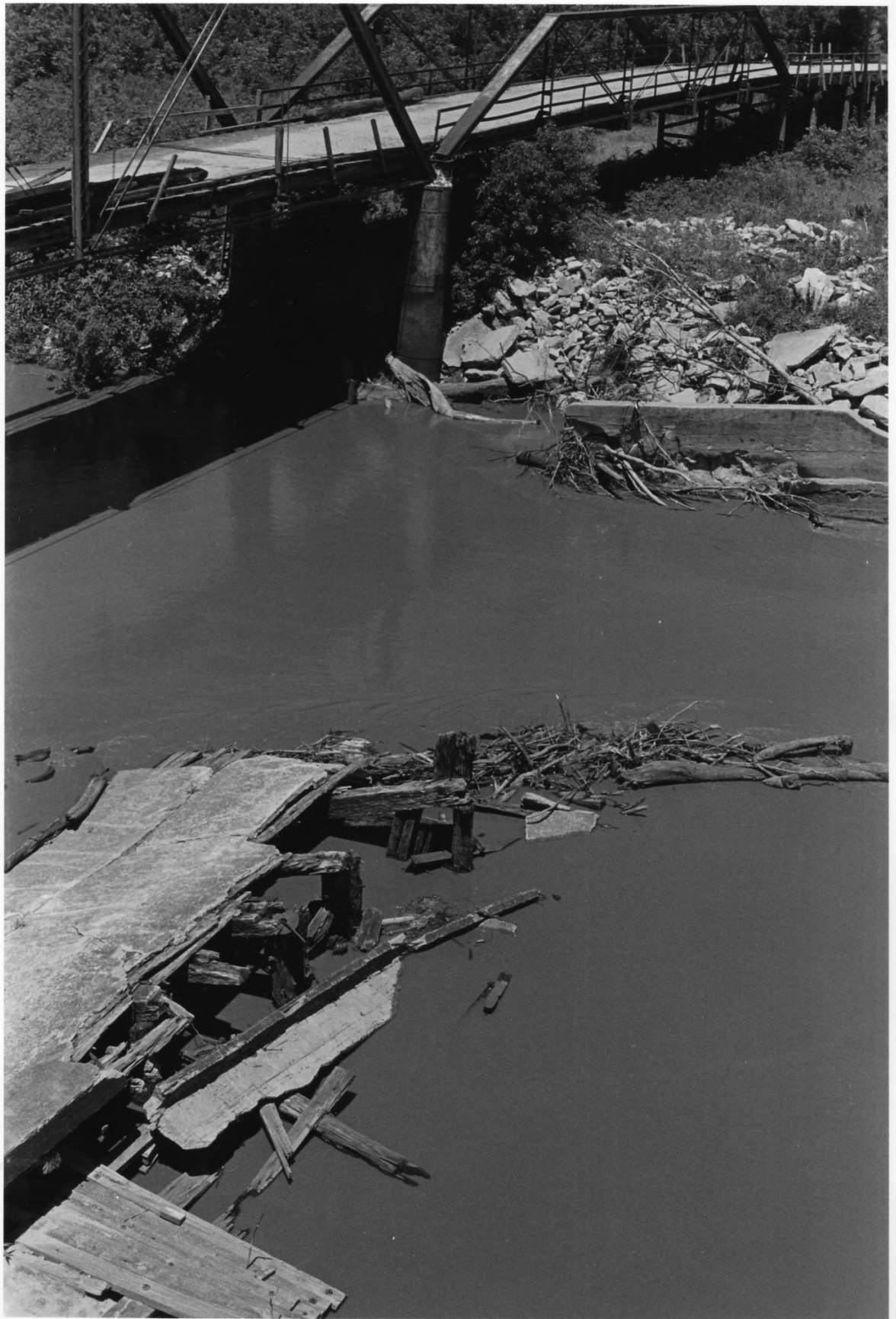


Photo #16

DEC 6 1978

DeWitt Flour Mills and King Iron Bridge
Gage County, Nebraska

Photo by D. Murphy, Nebraska State

Historical Society, July 1978

NSHS #7807/3:14

DEC 27 1978

View of the remains of the dam looking north

11/22-12 8 51

7807/3:14



7807/3:21
L82-10 B 51

Photo #17

DeWitt Flour Mills and King Iron Bridge
Gage County, Nebraska

Photo by D. Murphy, Nebraska State
Historical Society, July 1978

NSHS #7807/3:21

Detail view of the remains of the dam
(north end), looking north

DEC 6 1978

DEC 27 1978



7807/3:24
1482-10 R 51

Photo #18

DeWitt Flour Mills and King Iron Bridge
Gage County, Nebraska

Photo by D. Murphy, Nebraska State
Historical Society, July, 1978

NSHS #7807/3:24

DEC 27 1978

DEC 6 1978

View of the concrete spill-
way for the mill dam overflow
looking east-southeast with
the mill pond in the back-
ground.