

ARCHITECTURAL/HISTORICAL SURVEY

DAVENPORT, IOWA

The Architects Office

Wehner, Nowysz, Pottschiull and Pfiffner  
801 day building, iowa city, iowa 52240

DAVENPORT COMMUNITY DEVELOPMENT DEPARTMENT  
IOWA DIVISION OF HISTORIC PRESERVATION

SITE # 82-10- 2-W201 MAP # 1

HIST. DIST. \_\_\_\_\_

NAME First National Bank Building (D.M.R.P.) (H) C

ADDRESS 201 W. <sup>2nd</sup> Second Street

LEGAL DES. LeClaire's 1st Add. 40 6 E54' of lot 6  
SUB-DIVISION BLOCK PARCEL SUB-PARCEL

UTM 2 15 702360 4599240 ACREAGE -1 ZONE C-4  
EASTING NORTHING

OWNER First National Building Corporation  
201 W. Second St., Davenport, IA 52801

TITLE H. \_\_\_\_\_  
(IF DIFF.) \_\_\_\_\_



MAP

(See continuation sheet)

SITE SHEET

DESCRIPTION

FORM 9-story office building CONST. DATE 1923  
MATERIALS Brick & limestone over metal frame, concrete ARCH. STYLE Renaissance Revival  
FENESTRATION Rectangular 1/1 D.H.S.  
DIST. FEATURES Arcaded ground floor; giant pilastrade; wide bracketted cornice  
Ground floor showwindows partly blocked in, concrete facing along E. side  
ALTERATIONS at street level  
SITE & RELATED STR. Corner lot in CBD

STATEMENT

The First National Bank is an important Iowa example of the "tall office building", designed in the Renaissance Revival Style and thus complimenting other neoclassical edifices erected in Davenport during the 1920's. Conservatively conceived (perhaps in memory of its predecessor) the building has 3 stages: an arcaded, 2-story base; 5 undifferentiated office floors; and a 2-story upper section culminating in an overhanging, bracketted cornice. The base is richly ornamented, the tall round arches set between giant, fluted pilasters in a highly modified corinthian order. Spandrels above the arches (on the 2nd st. facade) are filled with winged figures, and mullions between the paired 2nd floor windows are decorated with stylized floral motifs. The deep reveals and soffit of the main entrance arch are lined with rectangular and square panels, each containing a figure or urn. The frame, transom and tympanum are metal, enriched with urns, figures, swags of intricate detail. In contrast, the 5 office floors are quite unadorned, except for quoins, and the windows are set close to the exterior wall plane. Above a narrow cornice,

ARCHITECTURE

SOURCES

The Architects Office

Wehner, Nowysz, Pottschiull and Pfiffner

201 day building Iowa city, Iowa 52240

DAVENPORT COMMUNITY DEVELOPMENT DEPARTMENT  
IOWA DIVISION OF HISTORIC PRESERVATION

# 82-10- 2-W201

STATEMENT (Continued)

two-story pilasters appear to further the building's vertical thrust but this is countered by the dark, recessed spandrels. A wide overhanging cornice effectively terminates the structure. The building is excellently proportioned and though hardly revealing of its structure, it does use its neoclassical inspiration to good effect. It is an important element in Davenport's downtown cityscape, and one of the finest buildings of its kind and age in the state.

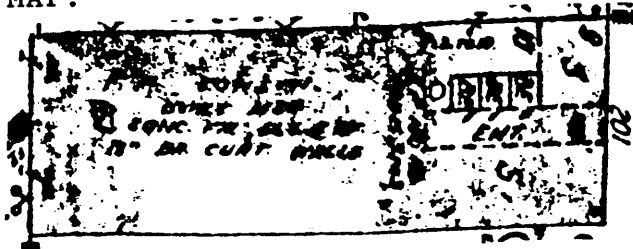
CONTINUATION

The Architects Office  
Wehner, Nowysz, Pottschull and Pfiffner  
801 desu building iowa city, iowa 52240

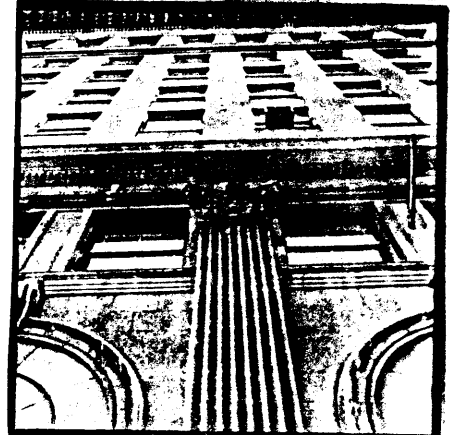
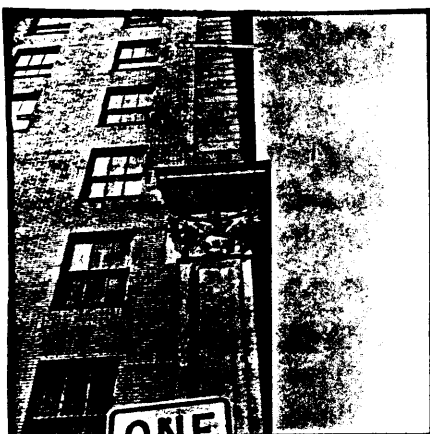
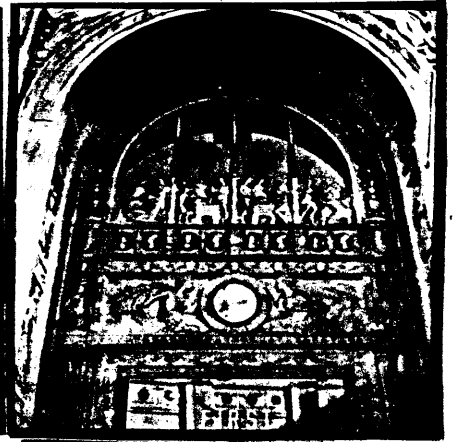
DAVENPORT COMMUNITY DEVELOPMENT DEPARTMENT  
IOWA DIVISION OF HISTORIC PRESERVATION

# 82-10- 2-W201

MAP:



ADDITIONAL PHOTOGRAPHS:



CONTINUATION