



The Nelson House

Portland, Multnomah, Oregon

Gunilla Myers

July 25, 2000

Gunilla Myers, 203 SE 15<sup>th</sup> ave, Portland OR 97214

Front (east) elevation

1 of 15



The Nelson House

Portland, Multnomah, Oregon

Cynthia Myers

July 25, 2000

Cynthia Myers, 203 SE 15<sup>th</sup> ave, Portland OR 97214

North-east corner, front porch

2 of 15



The Nelson House  
Portland, Multnomah, Oregon  
Gunilla Myers  
July 25, 2000  
Gunilla Myers, 203 SE 15<sup>th</sup> ave Portland OR 97214  
North elevation  
3 of 15

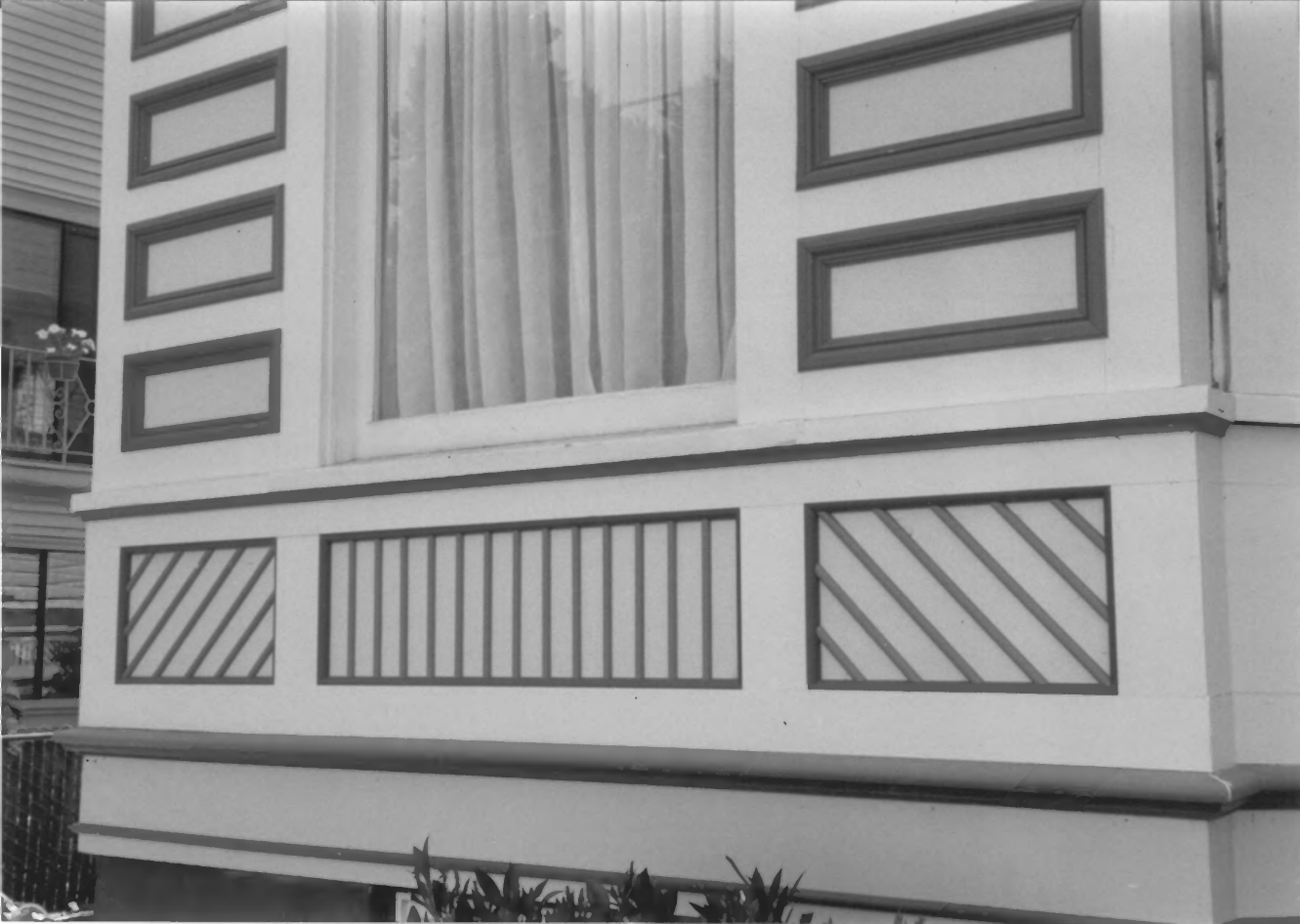


The Nelson House  
Portland, Multnomah, Oregon  
Gunilla Myers  
July 25, 2000  
Gunilla Myers, 203 SE 15<sup>th</sup> ave, Portland OR 97214  
West elevation  
4 of 15





The Nelson House  
Portland, Multnomah, Oregon  
Gunnilla Myers  
July 25, 2000  
Gunnilla Myers, 203 SE 15<sup>th</sup> ave, Portland OR 97214  
South elevation  
5 of 15



The Nelson House  
Portland, Multnomah, Oregon  
Gunnilla Myers  
July 25, 2000  
Gunnilla Myers, 203 SE 15<sup>th</sup> ave, Portland OR 97214  
Detail of lower skirting, and bay window.

6 of 15



The Nelson House

Portland, Multnomah, Oregon

Gunilla Myers

July 25, 2000

Gunilla Myers, 203 SE 15<sup>th</sup> Ave, Portland OR 97214

Detail of upper skirting and gable ends

7 of 15



The Nelson House

Portland, Multnomah, Oregon

Gunilla Myers

July 25, 2000

Gunilla Myers, 203 SE 15<sup>th</sup> ave, Portland OR 97214

Detail of porch ballusters.

8 of 15





The Nelson House

Portland, Multnomah, Oregon

Gumilla Myers

July 25, 2000

Gumilla Myers, 203 SE 15<sup>th</sup> ave, Portland OR 97214

Front porch and entry door

9 of 15



The Nelson House  
Portland, Multnomah, Oregon  
Gunnilla Myers  
July 25, 2000  
Gunnilla Myers, 203 SE 15<sup>th</sup> ave, Portland OR 97214  
Front entry  
10 of 15



The Nelson House

Portland, Multnomah, Oregon

Gunilla Myers

July 25, 2000

Gunilla Myers, 203 SE 15<sup>th</sup> ave, Portland OR 97214

Living/Dining area seen from entry (front)

11 of 15

© 2000



The Nelson House  
Portland, Multnomah, Oregon  
Gunilla Myers  
July 25, 2000  
Gunilla Myers, 203 SE 15<sup>th</sup> ave, Portland OR 97214  
Living/Dining area seen from back entry  
12 of 15





The Nelson House  
Portland, Multnomah, Oregon  
Gumilla Myers  
July 25, 2000  
Gumilla Myers, 203 SE 15<sup>th</sup> Ave, Portland OR 97214  
Stairway  
13 of 15



The Nelson House  
Portland, Multnomah, Oregon

Gumilla Myers

July 25, 2000

Gumilla Myers, 203 SE 15<sup>th</sup> ave, Portland OR 97214

2<sup>nd</sup> floor hallway

14 of 15



The Nelson House

Portland, Multnomah, Oregon

Gunilla Myers

July 25, 2000

Gunilla Myers, 203 SE 15<sup>th</sup> ave, Portland OR 97214

Master bedroom

15 of 15



*original siding  
w/o moldings.*





*Newly constructed, ca 1897*



*Shake siding  
and  
removal*

