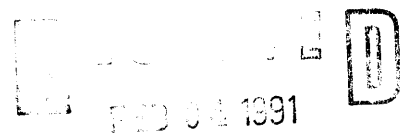


United States Department of the Interior National Park Service



National Register of Historic Places Registration Form

NATIONAL REGISTER

This form is for use in nominating or requesting determinations of eligibility for individual properties or districts. See instructions in Guidelines for Completing National Register Forms (National Register Bulletin 16). Complete each item by marking "x" in the appropriate box or by entering the requested information. If an item does not apply to the property being documented, enter "N/A" for "not applicable." For functions, styles, materials, and areas of significance, enter only the categories and subcategories listed in the instructions. For additional space use continuation sheets (Form 10-900a). Type all entries.

1. Name of Property

historic name Sewanee Fuel & Iron Company Building other names/site number Coalmont Bank Building (preferred)

2. Location

street & number State Highway 56 & Heidenburg St. not for publication city, town Coalmont vicinity state Tennessee code TN county Grundy code 061 zip code 37313

3. Classification

Table with 3 columns: Ownership of Property, Category of Property, and Number of Resources within Property. Includes checkboxes for private/public-local/state/federal and building/district/site/structure/object. Includes counts for contributing and noncontributing resources.

Name of related multiple property listing: Historic Resources of Grundy County Number of contributing resources previously listed in the National Register 0

4. State/Federal Agency Certification

As the designated authority under the National Historic Preservation Act of 1966, as amended, I hereby certify that this nomination request for determination of eligibility meets the documentation standards for registering properties in the National Register of Historic Places and meets the procedural and professional requirements set forth in 36 CFR Part 60. In my opinion, the property meets does not meet the National Register criteria. See continuation sheet. Signature of certifying official: Herbert L. Hager Date: 1/78/91 Deputy State Historic Preservation Officer, Tennessee Historical Commission

In my opinion, the property meets does not meet the National Register criteria. See continuation sheet. Signature of commenting or other official Date State or Federal agency and bureau

5. National Park Service Certification

I, hereby, certify that this property is: entered in the National Register. See continuation sheet. determined eligible for the National Register. See continuation sheet. determined not eligible for the National Register. removed from the National Register. other, (explain:)

Entered in the National Register. Signature of the Keeper: Helours Beyer Date of Action: 3/14/91

6. Function or Use

Historic Functions (enter categories from instructions)

COMMERCE/TRADE: financial institutionCOMMERCE/TRADE: businessGOVERNMENT: post office

Current Functions (enter categories from instructions)

VACANT/NOT IN USE**7. Description**

Architectural Classification

(enter categories from instructions)

OTHER: Classical Revival/Craftsman

Materials (enter categories from instructions)

foundation STONE: limestonewalls BRICKroof ASPHALTother WOOD**Describe present and historic physical appearance.**

The exterior of the Coalmont Bank Building has been altered little since its construction in 1921. The 2 story, square brick building stands on the corner of a large lot at the intersection of State Highway 56 and Heidenburg Street. The bricks used in construction were different shades of red and blue creating a light and dark diagonal patterns on the walls.

The front (east) facade has two wooden entrance doors with large plate glass windows, wood cornices and surrounds. There are two large single pane stationary windows on the front facade that allowed light into the two offices on the first floor. Above each of these two windows is a stationary tile transom, five rows of fifteen pale blue tile top each window. The second story has three round head arched six over one single hung windows centered between two 8 light casement windows. The three center windows share 1 limestone sill, every other window on the second floor has an individual limestone sill.

The sides and rear of the building are the same patterned brick as the main facade. The north facade has two centrally placed wooden doors with windows on each side. There are two groups of three windows on the second floor. On the roof are three gable roof dormers with attic vents. The rear facade, which faces Highway 56, has a door on the left side and three irregularly sized windows on first floor. On the second story are two sets of paired windows. The south facade has no doors except the entry to the basement. It has regularly spaced windows on each floor.

A stuccoed water table runs around the building about two feet above the limestone foundation. A small part of this stucco is now missing.

The roof is a low pitched pyramid roof, originally covered with red tile it is now covered with asphalt shingles, the only major change made to the exterior of the building. A red brick chimney pierces the southern side of the roof. Sawn wood dentils and brackets cover the eaves of the building. The brackets are paired on the

 See continuation sheet

8. Statement of Significance

Certifying official has considered the significance of this property in relation to other properties:

nationally statewide locally

Applicable National Register Criteria A B C D

Criteria Considerations (Exceptions) A B C D E F G n/a

Areas of Significance (enter categories from instructions)

Period of Significance

Significant Dates

Commerce

1921-1935

1921

Architecture

Cultural Affiliation

n/a

Significant Person

n/a

Architect/Builder

Unknown

State significance of property, and justify criteria, criteria considerations, and areas and periods of significance noted above.

The Coalmont Bank Building, in Coalmont, Grundy County, Tennessee is eligible for the National Register under criteria "A" and "C" for its significance to the commercial history and architecture of Coalmont.

The name Coalmont Bank Building is preferred over Sewanee Fuel and Iron Company building because it is the name traditionally used by Coalmont residents to describe the building. It is used in recognition of the long tenancy of the bank in this building, from 1921 to around 1975.

Grundy County is a county economically based on agriculture and coal mining. The town of Coalmont was founded because of the later. In 1903 the Sewanee Coal, Coke, and Land Company founded the town which they called Coal Dale, near coal deposits they planned on mining. The name was changed to Coalmont the following June.

The company opened coal mines around the town and built a battery of coke ovens. The mines did well and the town prospered. There were frequent labor shortages at the mines, which helped attract people to the town.

In 1908 Sewanee Coal, Coke and Land Company was bought out by the Sewanee Fuel and Iron Company (SF&I). They controlled the Coalmont mines for the next 40 years until most were closed.

In the 1910's SF&I decided to build a new office in Coalmont. In 1921 the building was completed. It was a two story brick building with a tiled pyramid roof. The Company offices were located on the second floor, on the first floor was the town post office and room for a bank.

See continuation sheet

9. Major Bibliographical References

Grundy Co., 1946-1960: A Chronology. Tracy City, TN: The Herald, 1977.

Lander, Hazel. Grundy County. Federal Writers Project. microfilm at Tennessee State Library and Archives.

Nocholson, James L. Grundy County. Memphis, TN: Memphis State University Press, 1982.

"Sewanee Company Extended Mining to Coalmont in 1904." Grundy County Herald. September 2, 1976, p. 12-B.

See continuation sheet

Previous documentation on file (NPS): N/A

preliminary determination of individual listing (36 CFR 67) has been requested

previously listed in the National Register

previously determined eligible by the National Register

designated a National Historic Landmark

recorded by Historic American Buildings

Survey # _____

recorded by Historic American Engineering

Record # _____

Primary location of additional data:

State historic preservation office

Other State agency

Federal agency

Local government

University

Other

Specify repository: _____

10. Geographical Data

Acreage of property less than 1 acre

UTM References

A 16 617840 3911240
Zone Easting Northing

C

B
Zone Easting Northing

D

See continuation sheet

Tracy City 99SW

Verbal Boundary Description

The boundary of the Coalmont Bank Building begins at the intersection of Highway 56 and Heidenburg Street, runs south approximately 150 feet to the edge of the 1975 building, follows an east/west line to the east property line and follows the north and east property lines. It is shown on the accompanying map.

See continuation sheet

Boundary Justification

The property nominated is the area historically associated with the bank building and excludes the modern building on the lot.

See continuation sheet

11. Form Prepared By

name/title Karen L. Daniels, Historic Preservation Planner
organization Southeast Tennessee Development District date August 3, 1990
street & number 216 W. 8th St., Suite 300 telephone (615) 266-5781
city or town Chattanooga state Tennessee zip code 37402

United States Department of the Interior
National Park Service

**National Register of Historic Places
Continuation Sheet**

Section number 7 Page 1 Coalmont Bank Building

edges of each facade, one on each side of the end windows.

The basement is accessible from an exterior stairwell on the South side of the building. The basement provides storage space. The stair opening is sided with poured concrete with concrete steps. A metal hand rail encloses 2 sides of the opening. A metal tank is located immediately West of the stairs.

The exterior of the building has not been significantly altered. Currently many of the windows and doors are boarded up to protect the building from vandals but the original windows and doors remain.

The interior has had changes made in it. Originally there were two offices on the first floor separated by a central wall. The front of these have been combined to make one large open room. The location of the other interior walls remains the same. The four vaults that were built into the building remain. The two on the upper floor have "Sewanee Fuel and Iron" printed in gold above the doors, all vault doors and surrounds are painted black.

Much of the original interior woodwork remains. Walnut six panel doors and walnut door and window casings are in all openings. The original walnut baseboards and second story fireplace remain. The wood flooring remains, although on the first floor it has been covered with linoleum or carpet, on the second floor the floors are bare. The original windows also remain.

The walnut bannister has been dismantled, but the pieces remain in the building are waiting to be reinstalled.

The building also retains some of its original lighting fixtures. These are domed, white milk glass globes attached to round metallic plates. These light are located in the second floor offices and in the north rear office on the first floor. In the former public area these lights have been removed in favor of another artificial lighting source, also since removed.

United States Department of the Interior
National Park Service

National Register of Historic Places
Continuation Sheet

Section number 8 Page 1 Coalmont Bank Building

Coalmont Savings Bank (CSB) opened in that first floor bank space on April 12, 1921. For many years it was the only bank in Coalmont, and, it was the longest continually operating business in Coalmont (1921-1988).

The bank had meager earning through most of its first 20 years of life, particularly from 1930-1935. The bank stayed open because bank officers took pride in its service to the community and refused to let it close. After 1940 it showed steady growth. It merged with First Bank of Marion County and in 1975 moved into a new facility next to the old building.

During its years of operation the bank building served as the hub of downtown Coalmont. It brought farmers into town and helped the town survive.

The bank is also the best surviving example of early commercial architecture in Coalmont. Many commercial buildings have undergone extensive alteration of interior and exterior features. It also represents the importance of SF&I in the development of Coalmont.

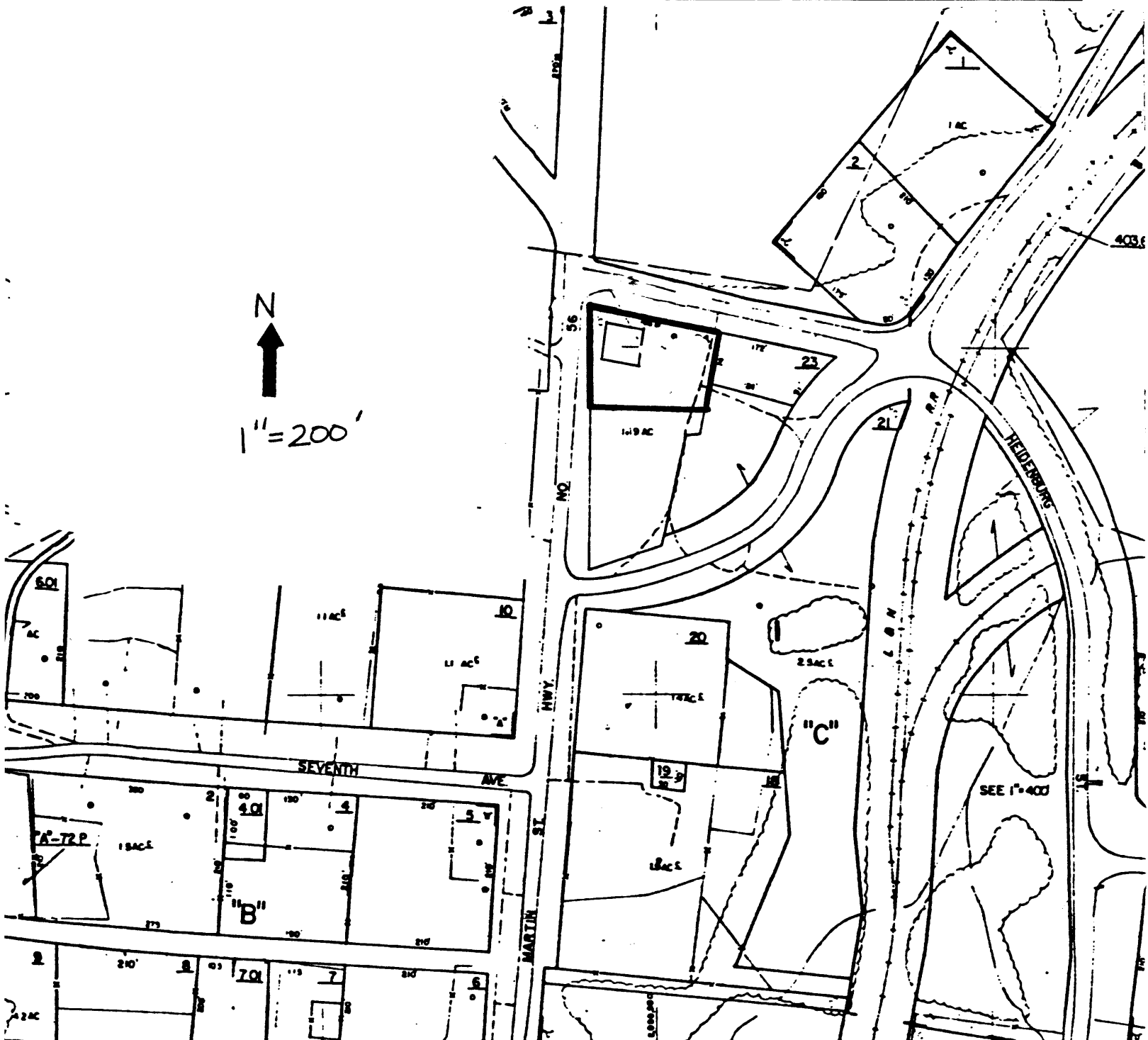
The building was not included in the original Historic Resources of Grundy County nomination because the interior was inaccessible. It has been reevaluated because it was possible to gain entry and evaluate the significance and integrity of the interior.

Although the building is currently vacant there are plans within the community to rehabilitate the building for use as a library or community center. It is believed that listing on the National Register will help raise funds for these projects and aid in its preservation.

United States Department of the Interior
National Park Service

National Register of Historic Places Continuation Sheet

Section number 10 Page 1 Coalmont Bank Building



United States Department of the Interior
National Park Service

National Register of Historic Places
Continuation Sheet

Section number Photos Page 1 Coalmont Bank Building

Coalmont Bank Building
Hwy. 56 and Heidenburg St.
Coalmont, Grundy County, Tennessee
Photo by: Karen L. Daniels
Date: June 1990
Neg: Tennessee Historical Commission
Nashville, Tennessee

View:

- #1 of 9: East facade, facing west
- #2 of 9: South facade, facing northwest
- #3 of 9: North facade, facing southwest
- #4 of 9: West facade, facing east
- #5 of 9: East facade, facing south
- #6 of 9: interior, 1st floor, east room
- #7 of 9: interior, stairs
- #8 of 9: interior, 2nd floor, east room
- #9 of 9: interior, vault, 2nd floor, east room

United States Department of the Interior
National Park Service

National Register of Historic Places Continuation Sheet

Section number Photos **Page** 2

Coalmont Bank Building

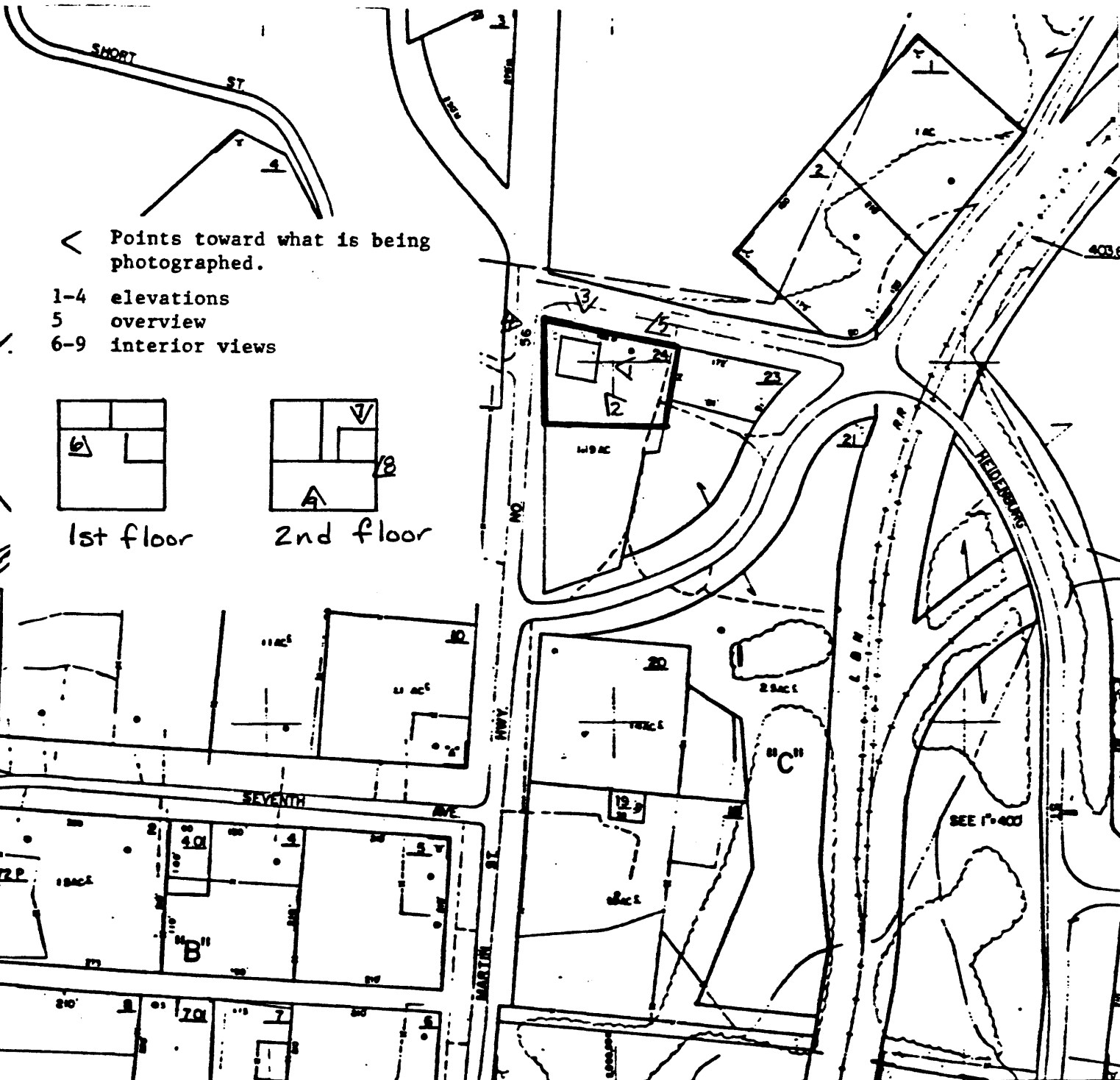


This photograph was taken shortly after the completion of the building.

United States Department of the Interior
National Park Service

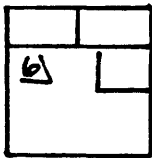
National Register of Historic Places
Continuation Sheet

Section number Photos Page 3 Coalmont Bank Building

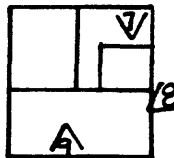


< Points toward what is being photographed.

- 1-4 elevations
- 5 overview
- 6-9 interior views



1st floor



2nd floor

United States Department of the Interior
National Park Service

National Register of Historic Places Continuation Sheet

Section number _____ Page _____ Coalmont Bank Building

Property Owner:

County of Grundy
Riley Anderson, County Executive
Altamont, TN 37301