

United States Department of the Interior  
National Park Service

National Register of Historic Places  
Registration Form

This form is for use in nominating or requesting determinations for individual properties and districts. See instructions in *How to Complete the National Register of Historic Places Registration Form* (National Register Bulletin 16A). Complete each item by marking "x" in the appropriate box or by entering the information requested. If an item does not apply to the property being documented, enter "N/A" for "not applicable." For functions, architectural classification, materials, and areas of significance, enter only categories and subcategories from the instructions. Place additional entries and narrative items on continuation sheets (NPS Form 10-900a). Use a typewriter, word processor, or computer, to complete all items.

1. Name of Property

historic name Cleburne County Farm Cemetery

other names/site number Site #CE0114

2. Location

street & number Southeast corner of Plantation Drive East and Deer Run

☐ not for publication

city or town Heber Springs

☒ vicinity

state Arkansas

code AR

county Cleburne

code 023

zip code 72543

3. State/Federal Agency Certification

As the designated authority under the National Historic Preservation Act, as amended, I hereby certify that this ☒ nomination ☐  
request for determination of eligibility meets the documentation standards for registering properties in the National Register of Historic  
Places and meets the procedural and professional requirements set for in 36 CFR Part 60. In my opinion, the property ☒ meets ☐  
does not meet the National Register criteria. I recommend that this property be considered significant

☐ nationally ☐ statewide ☒ locally (See continuation sheet for additional comments.)

Cathie Matthews  
Signature of certifying official/Title

7/28/05  
Date

Arkansas Historic Preservation Program

State or Federal agency and bureau

In my opinion, the property ☐ meets ☐ does not meet the National Register criteria. (☐ See Continuation sheet for additional comments.)

Signature of certifying official/Title

Date

State or Federal agency and bureau

4. National Park Service Certification

I hereby certify that the property is:

☒ entered in the National Register.

☐ See continuation sheet

☐ determined eligible for the  
National Register.

☐ See continuation sheet

☐ determined not eligible for the  
National Register.

☐ removed from the National  
Register.

☐ other, (explain:)

Edson H. Beall  
Signature of the Keeper

Date of Action

9-28-05

Cleburne County Farm Cemetery  
Name of Property

Cleburne County, Arkansas  
County and State

## 5. Classification

### Ownership of Property

(Check as many boxes as apply)

- ☒ private  
☐ public-local  
☐ public-State  
☐ public-Federal

### Category of Property

(Check only one box)

- ☐ building(s)  
☐ district  
☒ site  
☐ structure  
☐ object

### Number of Resources within Property

(Do not include previously listed resources in count.)

Contributing	Noncontributing	
		buildings
1		sites
	1	structures
	1	objects
1	2	Total

### Name of related multiple property listing

(Enter "N/A" if property is not part of a multiple property listing.)

### Number of Contributing resources previously listed in the National Register

## 6. Function or Use

### Historic Functions

(Enter categories from instructions)

FUNERARY/Cemetery

### Current Functions

(Enter categories from instructions)

FUNERARY/Cemetery

## 7. Description

### Architectural Classification

(Enter categories from instructions)

N/A

### Materials

(Enter categories from instructions)

foundation N/A

walls N/A

roof N/A

other STONE

### Narrative Description

(Describe the historic and current condition of the property on one or more continuation sheets.)

**United States Department of the Interior**

National Park Service

**National Register of Historic Places  
Continuation Sheet**Section number 7 Page 1**SUMMARY**

The Cleburne County Farm Cemetery, which contains 17 graves, is located at the southeast corner of Plantation Drive East and Deer Run south of Heber Springs in Cleburne County, Arkansas. The small cemetery is located in a new housing subdivision and is marked by a monument stone and fieldstone grave markers. A wood and wire fence surrounds the cemetery.

**ELABORATION**

The Cleburne County Farm Cemetery is located approximately 2.5 miles south of downtown Heber Springs in Cleburne County, Arkansas. It is located at the southeast corner of Plantation Drive East and Deer Run in the Mountainair Subdivision. The cemetery contains approximately 10 fieldstone markers and a large granite monument that reads "CLEBURNE COUNTY FARM CEMETERY/1896-1943" followed by a list of the names of the people buried in it.

The entire cemetery is surrounded by a wood and wire fence, which was installed c.1982 by the Cleburne County Historical Society when the granite marker was placed at the site. At the same time, approximately 40 years worth of brush and debris were cleaned up from the cemetery. Both the fence and granite marker are considered to be non-contributing resources.

The cemetery contains a total of 17 graves, and although it is not possible to break the burials down by decade, it is known that the burials occurred between 1896 and 1936 when the Cleburne County Farm was in operation. As a result, they are all considered to be historic for the purposes of the nomination. The people buried in the cemetery, based upon research done by the Cleburne County Historical Society are:

Sarah Bell  
Pankey Blankenship  
John and Eliza Birdsong  
Mr. Beasley and Kathryn  
Dave Beleue  
Jim Creswell  
Mr. Coe  
Mr. Hooper

Henry Hess  
Elizabeth Miller  
Mrs. Meaner  
Maudie Tarkington  
Mr. White  
Mr. Pankey  
Mr. Topley

**Integrity**

Overall, the Cleburne County Farm Cemetery retains good integrity. Today, approximately 10 historic fieldstone markers exist in the cemetery. Although the fence surrounding the cemetery and the granite marker were installed c.1982, they are relatively small in scale and help to protect and preserve the cemetery's legacy.

United States Department of the Interior  
National Park Service

## National Register of Historic Places Continuation Sheet

Section number 7 Page 2

The biggest change to the cemetery's integrity is its setting. Originally, the setting of the cemetery, like much of Cleburne County, was rural. A few buildings stood on the farm complex, and after the farm closed in 1936 the farm buildings either burned or deteriorated. Also by 1936 when the farm closed, the land was home to CCC Camp #3782, also known as Camp Heber, which had developed the site with several buildings and other associated features, some of which remain to the northwest of the cemetery. In 1942, Camp Heber closed, and the land was auctioned off by the county in 1943. After remaining vacant for many years, however, the site has been redeveloped in recent years as a housing subdivision. Even so, the homes in the area are on large lots, and the subdivision retains a rural feel. Additionally, trees in the cemetery's immediate vicinity also help to isolate it from the surrounding homes. Even though the cemetery's setting has undergone several significant changes, beginning with the construction of Camp Heber in 1935, the retention of the original fieldstone markers and the current relatively rural setting still allow the cemetery to convey its associations with the Cleburne County Farm and some vestiges of its original setting.



**8. Statement of Significance****Applicable National Register Criteria**

(Mark "x" in one or more boxes for the criteria qualifying the property for National Register listing.)

- ☒ **A** Property is associated with events that have made a significant contribution to the broad patterns of our history.
- ☐ **B** Property is associated with the lives of persons significant in our past.
- ☐ **C** Property embodies the distinctive characteristics of a type, period, or method of construction or represents the work of a master, or possesses high artistic values, or represents a significant and distinguishable entity whose components lack individual distinction.
- ☐ **D** Property has yielded, or is likely to yield, information important in prehistory or history.

**Criteria Considerations**

(Mark "x" in all the boxes that apply.)

Property is:

- ☐ **A** owned by a religious institution or used for religious purposes.
- ☐ **B** removed from its original location.
- ☐ **C** birthplace or grave of a historical figure of outstanding importance.
- ☒ **D** a cemetery.
- ☐ **E** a reconstructed building, object, or structure.
- ☐ **F** a commemorative property
- ☐ **G** less than 50 years of age or achieved significance within the past 50 years.

**Levels of Significance** (local, state, national)

Local

**Areas of Significance** (Enter categories from instructions)

SOCIAL HISTORY

**Period of Significance**

1896-1936

**Significant Dates**

1896-1936

**Significant Person** (Complete if Criterion B is marked)**Cultural Affiliation** (Complete if Criterion D is marked)**Architect/Builder****Narrative Statement of Significance**

(Explain the significance of the property on one or more continuation sheets.)

**9. Major Bibliographical References****Bibliography**

(Cite the books, articles, and other sources used in preparing this form on one or more continuation sheets.)

**Previous documentation on file (NPS):**

- ☐ preliminary determination of individual listing (36 CFR 67) has been requested
- ☐ previously listed in the National Register
- ☐ Previously determined eligible by the National Register
- ☐ designated a National Historic Landmark
- ☐ recorded by Historic American Buildings Survey  
# \_\_\_\_\_
- ☐ recorded by Historic American Engineering  
Record # \_\_\_\_\_

**Primary location of additional data:**

- ☒ State Historic Preservation Office
- ☐ Other State Agency
- ☐ Federal Agency
- ☐ Local Government
- ☐ University
- ☒ Other

Name of repository: Cleburne County Historical Society

United States Department of the Interior  
National Park Service

## National Register of Historic Places Continuation Sheet

Section number 8 Page 1

### SUMMARY

The Cleburne County Farm Cemetery is being nominated to the National Register of Historic Places with **local significance** under **Criterion A** for its association with the Cleburne County Farm and Cleburne County's efforts to provide aid to the poor and destitute. It is also being nominated under **Criteria Consideration D: Cemeteries**.

### ELABORATION

Cleburne County was formed from land annexed from Van Buren, White and Independence counties, and was created by an act of the General Assembly on February 20, 1883. The county was named for General Patrick Ronayne Cleburne, a Confederate hero often referred to as "the Stonewall Jackson of the Southwest." What was initially thought to be a temporary county seat was established at the town of Sugar Loaf, although the name of the town was changed to Heber Springs in 1910, and the county seat remains there today.<sup>1</sup>

From the time of its founding in 1883, Cleburne County had methods of aiding its poor citizens, although the methods used were likely those employed previously in Van Buren, White and Independence counties. In July 1883, for example, during the first term of the Cleburne County Court, Dan Sparkman presented an account for spending \$110 to aid a pauper. Although the account was initially disallowed by the court, Sparkman's attorney, G. W. Bruce, appealed the case, and the court allowed \$100 for the claim the next day at the rehearing.<sup>2</sup>

The aiding of a pauper by another person in the community was not unheard of prior to the establishment of poorhouses. Many areas provided "outdoor relief" to paupers that was normally administered by an Overseer of the Poor, who was often a local elected official. Usually a budget of tax money was set aside to help the poor by providing food, clothing, or even medical treatment, when family members, friends, or church congregations could not provide enough aid. However, other methods of supporting the poor were sometimes employed, including contracting with a person in the community to care for a group of paupers or auctioning off the poor, which allowed the lowest bidder to use the pauper's labor for free for a specified period of time in exchange for food, clothing, housing and healthcare.<sup>3</sup>

By the second half of the nineteenth century, the poorhouse system came to the United States from England, and poorhouses were built with great optimism. It was hoped that they would be cheaper and more efficient, and also aid in the reformation of paupers to eliminate the bad habits and character defects that many people

<sup>1</sup> Evalena Berry. *Time and the River: A History of Cleburne County*. Little Rock: Rose Publishing Co., 1982, pp. 1-3, 5.

<sup>2</sup> *Ibid*, p. 210.

<sup>3</sup> "History of 19<sup>th</sup> Century American Poorhouses." Found at: [www.poorhousestory.com/history.htm](http://www.poorhousestory.com/history.htm).

United States Department of the Interior  
National Park Service

## National Register of Historic Places Continuation Sheet

Section number 8 Page 2

assumed were the causes of their poverty. Although this was not always the case, the poorhouse system was an improvement over previous methods used to aid the poor.<sup>4</sup>

Even though many places saw poorhouses as the answer to the problems of aiding the poor, apparently not all counties in Arkansas had poorhouses by the early twentieth century. A special report on paupers in almshouses done by the Department of Commerce and Labor, Bureau of the Census, gave an outline of the laws governing poor relief in each state, and said about Arkansas that:

Every county must relieve its own poor. Sheriffs, coroners, constables, and justices of the peace shall give information to their respective county courts of the poor and the county court has the duty of providing for such persons. If satisfied that the applicants are paupers the county court shall order their commitment to the poorhouse, there to remain until discharged by an order of the court. County courts have the power to establish poorhouses, and when completed the court shall let them out annually to the lowest responsible bidder under bond for the faithful care of the inmates. In counties without poorhouses, the court may let the care of the poor to the lowest responsible bidder. The county is not liable for the support of any pauper who refuses to accept county aid in the manner provided above. The county court may cause the employment of each able-bodied pauper on work for the county.<sup>5</sup>

By the early 1890s, Cleburne County was still taking care of its poor through outdoor relief rather than establishing a poor house. In 1891, county records indicate that the county spent \$887.66 on the care of paupers, while in 1893 the cost to the county was \$643.46. The 1893 records also show that a blind family had been added to the list and two of the children attended the Arkansas School for the Blind in Little Rock. The pauper fund paid for their clothes and transportation costs. The amount paid out of the fund continued to fluctuate in the following years, paying out \$1,011.63 in 1894 and \$905.19 in 1895.<sup>6</sup>

Although Cleburne County was still providing outdoor relief as late as 1895, the county was apparently also beginning to look at establishing a poorhouse. On January 9, 1896, County Judge J. S. Wilson entered in the county court books that:

<sup>4</sup> *Ibid.*

<sup>5</sup> Department of Commerce and Labor, Bureau of the Census. *Special Reports: Paupers in Almshouse, 1904*. Washington: Government Printing Office, 1906. (Excerpts found at: [www.poorhousestory.com](http://www.poorhousestory.com))

<sup>6</sup> Information on the Cleburne County Farm and Cleburne County Farm Cemetery provided by Charles Stuart from the files of the Cleburne County Historical Society.



United States Department of the Interior  
National Park Service

## National Register of Historic Places Continuation Sheet

Section number 8 Page 3

On this day is presented to the Court the report of T. J. Andrews, J. M. Clayton, and A. Reidel, Commissioners heretofore appointed by the Court to select and purchase a "Poor Farm" for Cleburne County, which shows that from several bids and propositions, that had selected and accepted that of J. R. Baker on the Thirty-two and One Half (32 ½) Rods of S ½ of NW ¼, and the W ½ of SW ¼ and the W ½ of NE ¼, containing one hundred thirty-two and one half (132 ½) acres, for the consideration of four hundred dollars (\$400.00) in Cleburne County Warrants payable in January 1896 and the sum of Two Hundred and Twenty-five dollars (\$225.00) payable in currency in July 1897 which said report is duly examined by the Court and in all things approved.<sup>7</sup>

The county court books went on to say that Baker gave the county the deed to land in:

Section Thirty-five (35), Township Ten (10) North, Range Ten (10) West, for which said lands were selected by the Commissioners appointed by the Court for that purpose for a "Poor Farm," and said deed is accepted by the Court for and in behalf of Cleburne County, and said Commissioners are hereby ordered to cause to be erected as required by law, such buildings on said "Poor Farm" as in their judgement [sic] shall be necessary for the comfort and proper maintenance of paupers of Cleburne County, and make due report of their proceedings to this Court.

And it is further ordered by the Court that the Clerk draw his warrant on the Treasury of Cleburne County Warrants, January 1896 out of appropriations for "Poor Farm," and it is further ordered by the Court that J. R. Baker be allowed the said sum of \$225.00 in currency to be paid in July 1897.<sup>8</sup>

By early 1898, the county was ready to select a custodian for the poorhouse. The court met in January 1898 and again on February 1 for:

...the letting of the Cleburne County Poor Farm and the keeping of the paupers of said County due notice for the reception of bids having been published according to law and the Court being fully advised doth accept the bid of W. H. Bickle...he agreeing to keep the paupers of said County at the sum and price of \$7.50 per month for each person duly declared by the County to be paupers. Said W. H. Bickle to furnish said paupers with good and sufficient and

<sup>7</sup> *Ibid.*

<sup>8</sup> *Ibid.*



United States Department of the Interior  
National Park Service

## National Register of Historic Places Continuation Sheet

Section number 8 Page 4

comfortable maintenance including, board, clothing, washing and all proper medical attention and said County to furnish W. H. Bickle free of charge the use of the County Farm with all buildings thereon and appurtenances thereunto belonging; to begin April 1, 1898 and end March 30, 1899.<sup>9</sup>

The court set Bickle's bond at \$600.00 and he promised to care for the paupers as well as keep the County Farm in good repair. Each subsequent January the court would meet to accept bids from applicants to run the farm, and select a new custodian of the farm. Although the bond was originally set at \$600.00, it was subsequently raised to \$1,000.00.<sup>10</sup>

Even though Cleburne County had the Poor Farm by the late 1890s, it appears that not all of the paupers were required to move to the farm. Even as late as 1903, some people who were responsible for caring for paupers were presenting claims to the court and being paid for them. This suggests that paupers did not move to the County Farm unless they wanted to.<sup>11</sup>

Although the first custodian of the Poor Farm was male, the job was not necessarily limited to men. In the early 1920s, Viola Clark, the widowed mother of W. T. Clark, was custodian of the farm, and W. T. Clark took over in 1925.<sup>12</sup>

When the Cleburne County Farm was first developed, it appears that it just contained the main house. However, by 1930 the farm had been expanded to include a new building for the "patients," which is what the residents were called, a smokehouse, barn, chicken house, cellar, and outhouses. The main house is where the custodian's family lived while the house for the patients consisted of two large rooms with a double fireplace separating them. One of the rooms was for the men while the other was for the women, and each room had a large closet next to the fireplace. In addition, each room had a table where the patients ate their meals, which they carried on trays from the kitchen in the main house. Although meals were prepared for the patients, they were responsible for washing their own dishes.<sup>13</sup>

Although the quality of life at the farm varied depending on the custodian, the Cleburne County Farm enjoyed a higher quality of life than many other county poor farms. The farm had cows, hogs, horses, chickens, guinea fowl, and other stock and a large garden also provided food for the custodian's family and the patients. All of the necessary farm work was done by the custodian and the able-bodied patients.<sup>14</sup>

<sup>9</sup> *Ibid.*

<sup>10</sup> *Ibid.*

<sup>11</sup> *Ibid.*

<sup>12</sup> *Ibid.*

<sup>13</sup> Berry, p. 211.

<sup>14</sup> *Ibid.*

United States Department of the Interior  
National Park Service

## National Register of Historic Places Continuation Sheet

Section number 8 Page 5

By the 1930s, however, the days of the Cleburne County Farm were numbered. The county began receiving funding from federal welfare and aid programs, and a welfare committee screened applicants for the federal aid. As a result, the county farm was not really needed, especially since there were only two patients at the facility. W. O. Dunlap was the final custodian at the facility when the main house was destroyed in 1936 by a fire that was believed to have started in the fireplace. The farm closed and one patient went to live with a sister while the other patient was relocated to the State Hospital.<sup>15</sup>

When the County Farm closed in 1936, changes had already begun to occur on the land. In the first part of June 1935, CCC Camp #3782, also known as Camp Heber, was under construction on some of the land to the northwest of the cemetery, and the camp's first enrollees arrived in early July. The camp had several facilities, including barracks, a park facility across the road, a large fish pond, recreation grounds, roads, and an educational building that was "without question [one] of the best of its kind in the state of Arkansas, and probably one of the best in the entire South."<sup>16</sup> Camp Heber remained on the site until it was closed in 1942.

In May 1943 the county court decided to sell the County Farm land, since the buildings were deteriorating and it was no longer serving the county's needs. Bids were solicited, and Leroy Heigle submitted the winning bid, buying the land for \$2,125.00. The sale of the land was finalized with the signing of the deed by county clerk, Cecil Patchell, on May 10, 1943.<sup>17</sup>

After the County Farm buildings and most of the buildings and features of Camp Heber were removed, the County Farm land mainly remained vacant for the next fifty years. (A few remnant features from Camp Heber remain to the northwest of the cemetery.) However, c.1990 a new housing development was begun on the land, and today a few roads and scattered homes exist in the vicinity of the cemetery.

Today, the Cleburne County Farm Cemetery is the last surviving element from the Cleburne County Farm, and a rare reminder of the county's efforts to provide assistance to the poor during the late nineteenth and early twentieth centuries. The preserved cemetery, with its simple fieldstone markers, is a testament to the efforts of the Cleburne County Historical Society to restore, preserve, and maintain this important, but often overlooked, aspect of Arkansas' past.

<sup>15</sup> *Ibid.*

<sup>16</sup> *Official Annual, Arkansas District Civilian Conservation Corps, Seventh Corps Area.* Unknown Publisher, 1937, pp. 99-101, 169.

<sup>17</sup> Information on the Cleburne County Farm and Cleburne County Farm Cemetery provided by Charles Stuart from the files of the Cleburne County Historical Society.

Cleburne County Farm Cemetery  
Name of Property

Cleburne County, Arkansas  
County and State

United States Department of the Interior  
National Park Service

## National Register of Historic Places Continuation Sheet

Section number 8 Page 6

---

### STATEMENT OF SIGNIFICANCE

The Cleburne County Farm Cemetery is being nominated to the National Register of Historic Places with **local significance** under **Criterion A** for its association with the Cleburne County Farm and Cleburne County's efforts to provide aid to the poor and destitute. It is also being nominated under **Criteria Consideration D: Cemeteries**.

United States Department of the Interior  
National Park Service

## National Register of Historic Places Continuation Sheet

Section number 9 Page 1

---

### BIBLIOGRAPHY

Berry, Evalena. *Time and the River: A History of Cleburne County*. Little Rock: Rose Publishing Co., 1982.

Department of Commerce and Labor, Bureau of the Census. *Special Reports: Paupers in Almshouse, 1904*. Washington: Government Printing Office, 1906. (Excerpts found at: [www.poorhousestory.com](http://www.poorhousestory.com))

"History of 19<sup>th</sup> Century American Poorhouses." Found at: [www.poorhousestory.com/history.htm](http://www.poorhousestory.com/history.htm).

Information on the Cleburne County Farm and Cleburne County Farm Cemetery provided by Charles Stuart from the files of the Cleburne County Historical Society.

*Official Annual, Arkansas District Civilian Conservation Corps, Seventh Corps Area*. Unknown Publisher, 1937.



Name of Property

County and State

**Acreage of Property** Less than one.

(Place additional UTM references on a continuation sheet.)

1	15	587355	3923793
	Zone	Easting	Northing

2. \_\_\_\_\_

3                                                                                
Zone      Easting      Northing

4. \_\_\_\_\_

☐ See continuation sheet

(Describe the boundaries of the property on a continuation sheet.)

(Explain why the boundaries were selected on a continuation sheet.)

name/title Ralph S. Wilcox, National Register & Survey Coordinator

organization	Arkansas Historic Preservation Program	date	March 21, 2005
--------------	--	------	----------------

street & number 1500 Tower Building, 323 Center Street telephone (501) 324-9787

city or town Little Rock state AR zip code 72201

Submit the following items with the completed form:

## Maps

A USGS map (7.5 or 15 minute series) indicating the property's location

A **Sketch map** for historic districts and properties having large acreage or numerous resources.

Representative **black and white** photographs of the property.

(Check with the SHPO or FPO for any additional items.)

(Complete this item at the request of SHPO or FPO.)

name

street & number	telephone
1000	
1001	
1002	
1003	
1004	
1005	
1006	
1007	
1008	
1009	
1010	
1011	
1012	
1013	
1014	
1015	
1016	
1017	
1018	
1019	
1020	
1021	
1022	
1023	
1024	
1025	
1026	
1027	
1028	
1029	
1030	
1031	
1032	
1033	
1034	
1035	
1036	
1037	
1038	
1039	
1040	
1041	
1042	
1043	
1044	
1045	
1046	
1047	
1048	
1049	
1050	
1051	
1052	
1053	
1054	
1055	
1056	
1057	
1058	
1059	
1060	
1061	
1062	
1063	
1064	
1065	
1066	
1067	
1068	
1069	
1070	
1071	
1072	
1073	
1074	
1075	
1076	
1077	
1078	
1079	
1080	
1081	
1082	
1083	
1084	
1085	
1086	
1087	
1088	
1089	
1090	
1091	
1092	
1093	
1094	
1095	
1096	
1097	
1098	
1099	

city or town state zip code

**Paperwork Reduction Act Statement:** This information is being collected for applications to the National Register of Historic Places to nominate properties for listing or determine eligibility for listing, to list properties, and to amend existing listing. Response to this request is required to obtain a benefit in accordance with the National Historic Preservation Act, as amended (16 U.S.C. 470 *et seq.*)

**Estimated Burden Statement:** Public reporting burden for this form is estimated to average 18.1 hours per response including time for reviewing instructions, gathering and maintaining data, and completing and reviewing the form. Direct comments regarding this burden estimate or any aspect of this form to the Chief, Administrative Services Division, National Park Service, P. O. Box 37127, Washington, DC 20013-7127; and the Office of Management and Budget, Paperwork Reduction Projects (1024-0018), Washington, DC 20303.

United States Department of the Interior  
National Park Service

## National Register of Historic Places Continuation Sheet

Section number 10 Page 1

---

### VERBAL BOUNDARY DESCRIPTION

From the southeast corner of Plantation Drive East and Deer Run, proceed easterly along the south side of Deer Run for 105 feet, thence proceed southerly parallel to Plantation Drive East for 145 feet, thence proceed westerly parallel to Deer Run for 105 feet, thence proceed northerly along the east side of Plantation Drive East for 145 feet to the point of beginning.

### BOUNDARY JUSTIFICATION

The boundary contains the land of the Cleburne County Farm Cemetery and its immediate surroundings that retains integrity.

UNITED STATES DEPARTMENT OF THE INTERIOR  
NATIONAL PARK SERVICE

NATIONAL REGISTER OF HISTORIC PLACES  
EVALUATION/RETURN SHEET

REQUESTED ACTION: NOMINATION

PROPERTY Cleburne County Farm Cemetery  
NAME:

MULTIPLE  
NAME:

STATE & COUNTY: ARKANSAS, Cleburne

DATE RECEIVED: 8/15/05 DATE OF PENDING LIST: 9/13/05  
DATE OF 16TH DAY: 9/28/05 DATE OF 45TH DAY: 9/28/05  
DATE OF WEEKLY LIST:

REFERENCE NUMBER: 05001066

REASONS FOR REVIEW:

APPEAL: N DATA PROBLEM: N LANDSCAPE: N LESS THAN 50 YEARS: N  
OTHER: N PDIL: N PERIOD: N PROGRAM UNAPPROVED: N  
REQUEST: N SAMPLE: N SLR DRAFT: N NATIONAL: N

COMMENT WAIVER: N

☒ ACCEPT ☐ RETURN ☐ REJECT 9.28.05 DATE

ABSTRACT/SUMMARY COMMENTS:

Entered in the  
National Register

RECOM./CRITERIA \_\_\_\_\_

REVIEWER \_\_\_\_\_ DISCIPLINE \_\_\_\_\_

TELEPHONE \_\_\_\_\_ DATE \_\_\_\_\_

DOCUMENTATION see attached comments Y/N see attached SLR Y/N

If a nomination is returned to the nominating authority, the nomination is no longer under consideration by the NPS.



CLEBURNE COUNTY FARM CEMETERY

1896 ——— 1943

PANKEY BLANKENSHIP  
MR. REASLEY & KATHRYN  
MAUDIE TARKINGTON

SARAH BELL  
MR. WHITE  
MR. PINKEY

MRS. MEANER  
HENRY HESS  
DAVE BLEUE

JOHN & ELIZA BIRDSONG  
ELIZABETH MILLER  
JIM CRESWELL

MR. COE  
MR. HOOPER  
MR. TOPLEY



CLEBURNE COUNTY FARM CEMETERY

CLEBURNE COUNTY, AR

RALPH S. WILCOX

FEBRUARY 2005

ARKANSAS HISTORIC PRESERVATION PROGRAM, LITTLE ROCK, AR

MEMORIAL MARKER, LOOKING EAST







CLEBURNE COUNTY FARM CEMETERY

CLEBURNE COUNTY, AR

RALPH S. WILCOX

FEBRUARY 2005

ARKANSAS HISTORIC PRESERVATION PROGRAM, LITTLE ROCK, AR

TYPICAL FIELDSTONE GRAVE MARKER







CLEBURNE COUNTY FARM CEMETERY

CLEBURNE COUNTY, AR

RALPH S. WILCOX

FEBRUARY 2005

ARKANSAS HISTORIC PRESERVATION PROGRAM, LITTLE ROCK, AR

VIEW OF THE CEMETERY, LOOKING SOUTHEAST







CLEBURNE COUNTY FARM CEMETERY

CLEBURNE COUNTY, AR

RALPH S. WILCOX

FEBRUARY 2005

ARKANSAS HISTORIC PRESERVATION PROGRAM, LITTLE ROCK, AR

VIEW OF THE CEMETERY, LOOKING SOUTHWEST







CLEBURNE COUNTY FARM CEMETERY

CLEBURNE COUNTY, AR

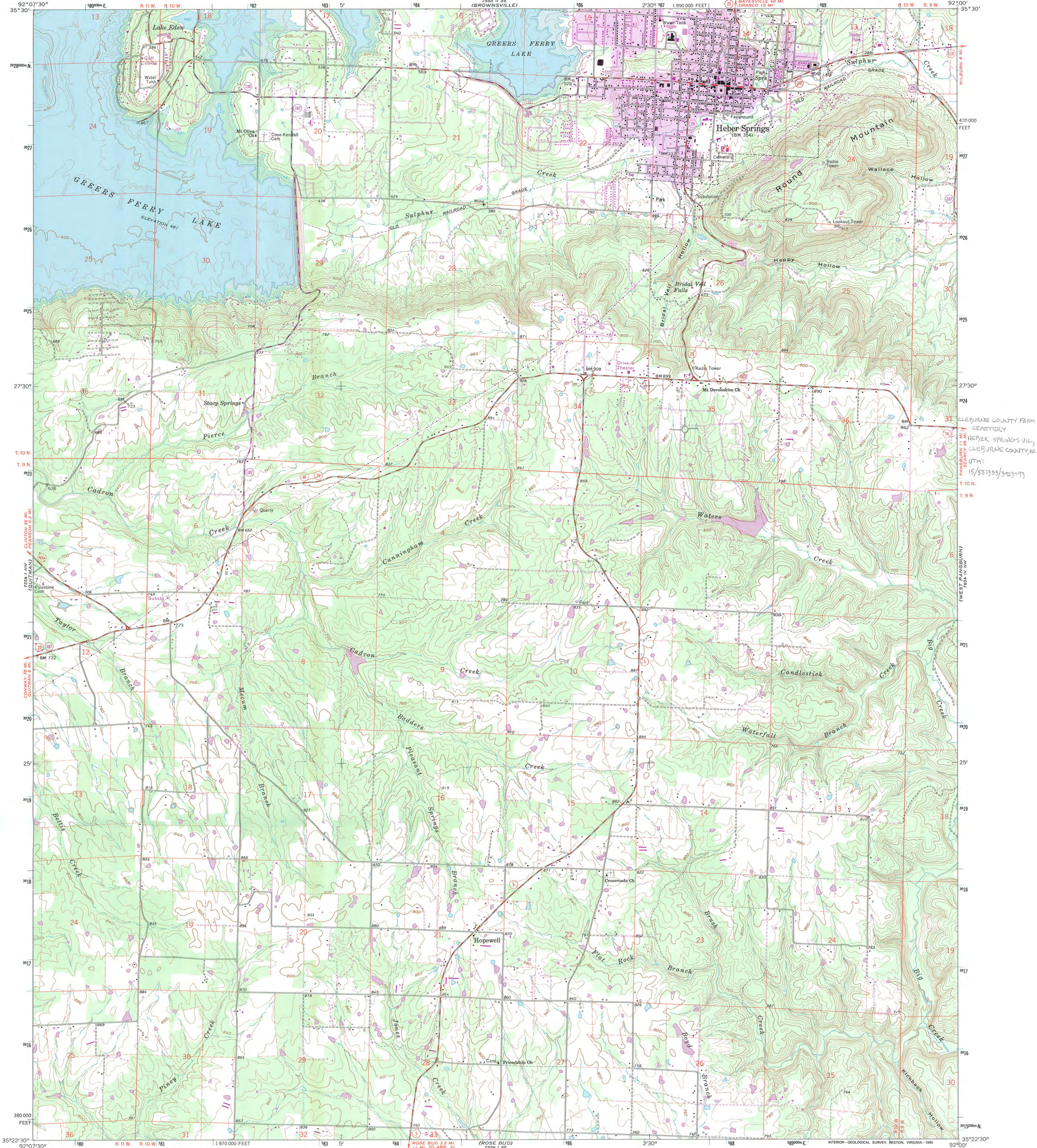
RALPH S. WILCOX

FEBRUARY 2005

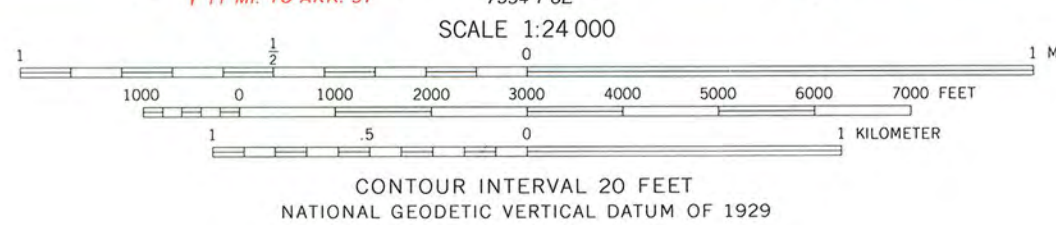
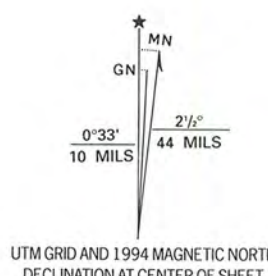
ARKANSAS HISTORIC PRESERVATION PROGRAM, LITTLE ROCK, AR

VIEW OF THE CEMETERY, LOOKING NORTHEAST





Produced by the United States Geological Survey  
Compiled by photogrammetric methods from imagery dated 1960  
Field checked 1963  
North American Datum of 1927 (NAD 27). Projection and  
10 000-foot ticks: Arkansas coordinate system, north zone  
(Lambert conformal conic)  
Blue 1000-meter Universal Transverse Mercator ticks, zone 15  
North American Datum of 1983 (NAD 83) is shown by dashed  
corner ticks. The values of the shift between NAD 27 and NAD 83  
for 7.5-minute intersections are obtainable from National Geodetic  
Survey NADCON software  
Areas covered by dashed light-blue pattern  
are subject to controlled inundation



ROAD CLASSIFICATION	
Primary highway, hard surface	Light-duty road, hard or improved surface
Secondary highway, hard surface	Unimproved road
Interstate Route	U. S. Route
	State Route

THIS MAP COMPLIES WITH NATIONAL MAP ACCURACY STANDARDS  
FOR SALE BY U. S. GEOLOGICAL SURVEY, DENVER, COLORADO 80225, OR RESTON, VIRGINIA 22092  
AND ARKANSAS GEOLOGICAL COMMISSION, LITTLE ROCK, ARKANSAS 72204  
A FOLDER DESCRIBING TOPOGRAPHIC MAPS AND SYMBOLS IS AVAILABLE ON REQUEST

Revisions shown in purple compiled in cooperation with  
State of Arkansas agencies from imagery dated 1989  
and other sources. Map edited 1995  
Information shown in purple may not meet USGS content  
standards and may conflict with previously mapped contours

HEBER SPRINGS, AR  
35092-D1-TF-024  
1989  
DMA 7554 1 NE-SERIES V884





# The Department of Arkansas Heritage

Mike Huckabee, Governor  
Cathie Matthews, Director

Arkansas Arts Council

Arkansas Natural Heritage  
Commission

Delta Cultural Center

Historic Arkansas Museum

Mosaic Templars  
Cultural Center

Old State House Museum



## Arkansas Historic Preservation Program

1500 Tower Building  
323 Center Street  
Little Rock, AR 72201  
(501) 324-9880  
fax: (501) 324-9184  
tdd: (501) 324-9811

e-mail:

[info@arkansaspreservation.org](mailto:info@arkansaspreservation.org)

website:

[www.arkansaspreservation.org](http://www.arkansaspreservation.org)

An Equal Opportunity Employer



August 3, 2005

Dr. Janet Matthews  
Chief of Registration  
United States Department of the Interior  
National Register of Historic Places  
National Park Service  
8th Floor  
1201 Eye Street, NW  
Washington, DC 20005

RE: Cleburne County Farm Cemetery – Heber Springs vic.,  
Cleburne County, Arkansas

Dear Dr. Matthews:

We are enclosing for your review the above-referenced nomination. The Arkansas Historic Preservation Program has complied with all applicable nominating procedures and notification requirements in the nomination process.

If you need further information, please call Ralph S. Wilcox of my staff at (501) 324-9787. Thank you for your cooperation in this matter.

Sincerely,

Cathie Matthews  
State Historic Preservation Officer

CM:rsw

Enclosure

