



B-4608

Clifton Mansion, Clifton Park
Baltimore (City) Maryland

Johns Hopkins

5/2005

Maryland SHPO

Southeast Elevation

1/24



B-4608

Clifton Mansion, Clifton Park

Baltimore City, Maryland

Johns Hopkins

5/2005

Maryland SHPO

Northwest elevation

2/24



B-4608

Clifton mansion, Clifton Park

Baltimore(City) Maryland

Johns Hopkins

5/2005

Maryland SHPO

View of plaster niches, parlor room southwest wall

3/24



B-4608

Clifton Mansion, Clifton Park
Baltimore (City) Maryland

Johns Hopkins

5/2005

Maryland SHPO

View of Northeast wall of dining room

4/24



B-4608

Gardener's Cottage, Clifton Park

Baltimore (city) Maryland

Johns Hopkins

5/2005

Maryland SHPO

West Elevation

5/24



B-4608

Superintendent's House, Clifton Park

Baltimore (City) Maryland

Johns Hopkins

5/2005

Maryland SHPO

Southwest elevation

6/24



B-4608

Shops building, Clifton Park

Baltimore (city) Maryland

Johns Hopkins

5/2005

Maryland STPO

Southwest Elevation

7/24



B-4608

Bath House, Clifton Park

Baltimore (City) Maryland

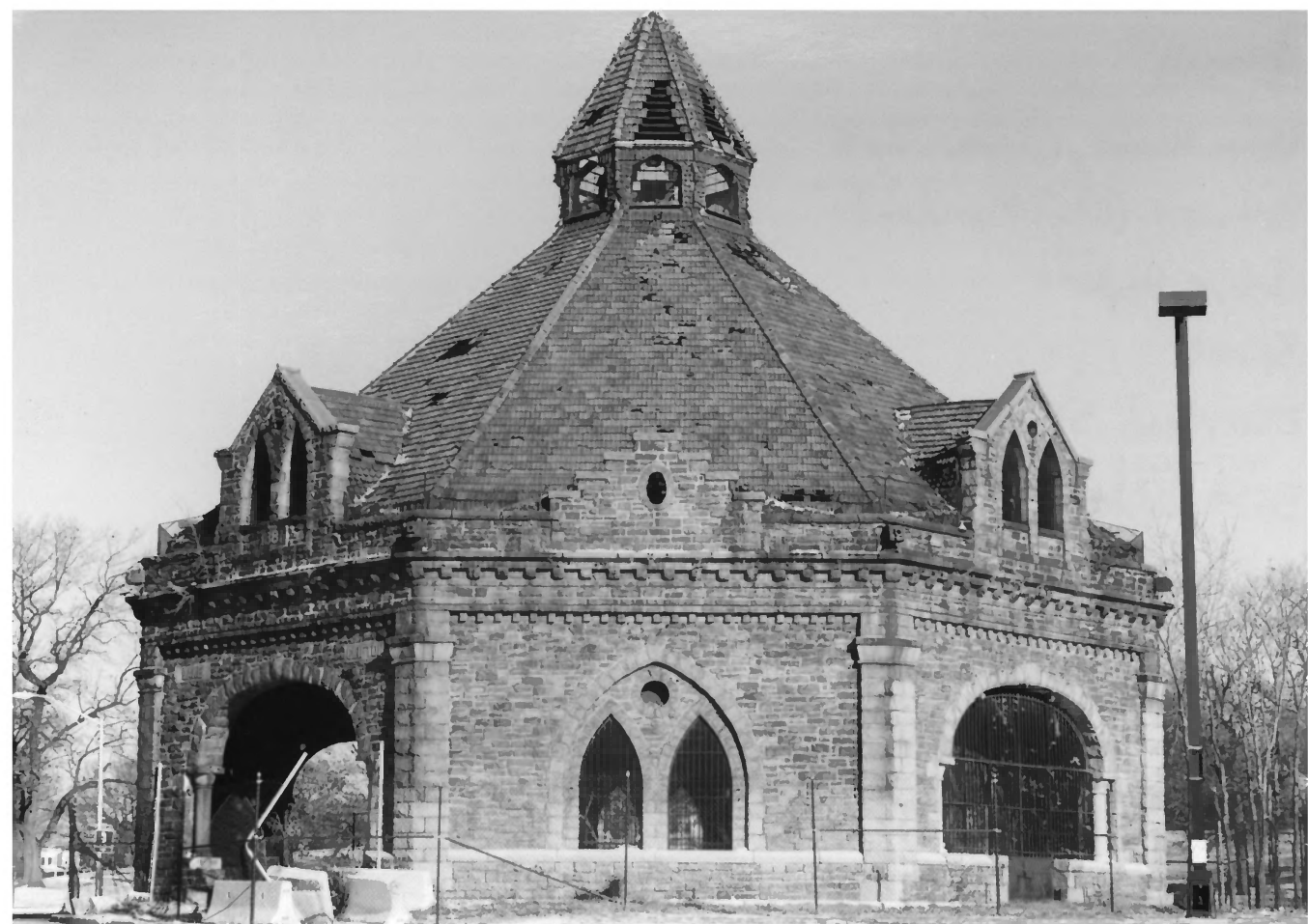
Johns Hopkins

5/2005

Maryland SHPO

Southeast & Southwest elevations

8/24



B-4608

Valve House, Clifton Park

Baltimore (City) Maryland

Johns Hopkins

5/2005

Maryland SHPO

South Elevation

9/24



B-4608

Band Shell, Clifton Park

Baltimore (city) Maryland

Johns Hopkins

5/2005

Maryland SHPO

North Elevation

10/24



B-4608

Mother's Garden Pavilion, Clifton Park
Baltimore (City) Maryland

Johns Hopkins

5/2005

Maryland SHPO

Southeast Elevation

11/24



B-4608

Mother's Garden Pergola, Clifton Park
Baltimore, (City) Maryland

Johns Hopkins

5/2005

Maryland SHPO

Southwest elevation

12/24



B-4608

Mother's Garden Foot Bridge, Clifton Park

Baltimore (city) Maryland

Johns Hopkins

5/2005

Maryland SHPO

13/24



B-4608

Octagon Pavilion, Clifton Park
Baltimore (City), Maryland

Johns Hopkins

5/2005

Maryland SHPO

South elevation

14/24

NG
NG
FIM

SAINT-LO DRIVE

CLIFTON
PARK

WELCOME TO
CLIFTON PARK



B-4608

Gate at St. Lo Drive and St. Claire Lane, Clifton Park
Baltimore (City) Maryland

Johns Hopkins

5/2005

Maryland STIPO

15/24



B-4608

Gate at St. Lo Drive and Harford Road, Clifton Park
Baltimore (City), Maryland

Johns Hopkins

5/2005

Maryland SHPO

16/24

Welcome to
CLIFTON
-PARK

CLIFTON
PARK



B-4608

Gate at Belair Road and Indian Lane, Clifton Park
Baltimore (City) Maryland

Johns Hopkins

5/2005

Maryland SHPO

17/24



B-4608

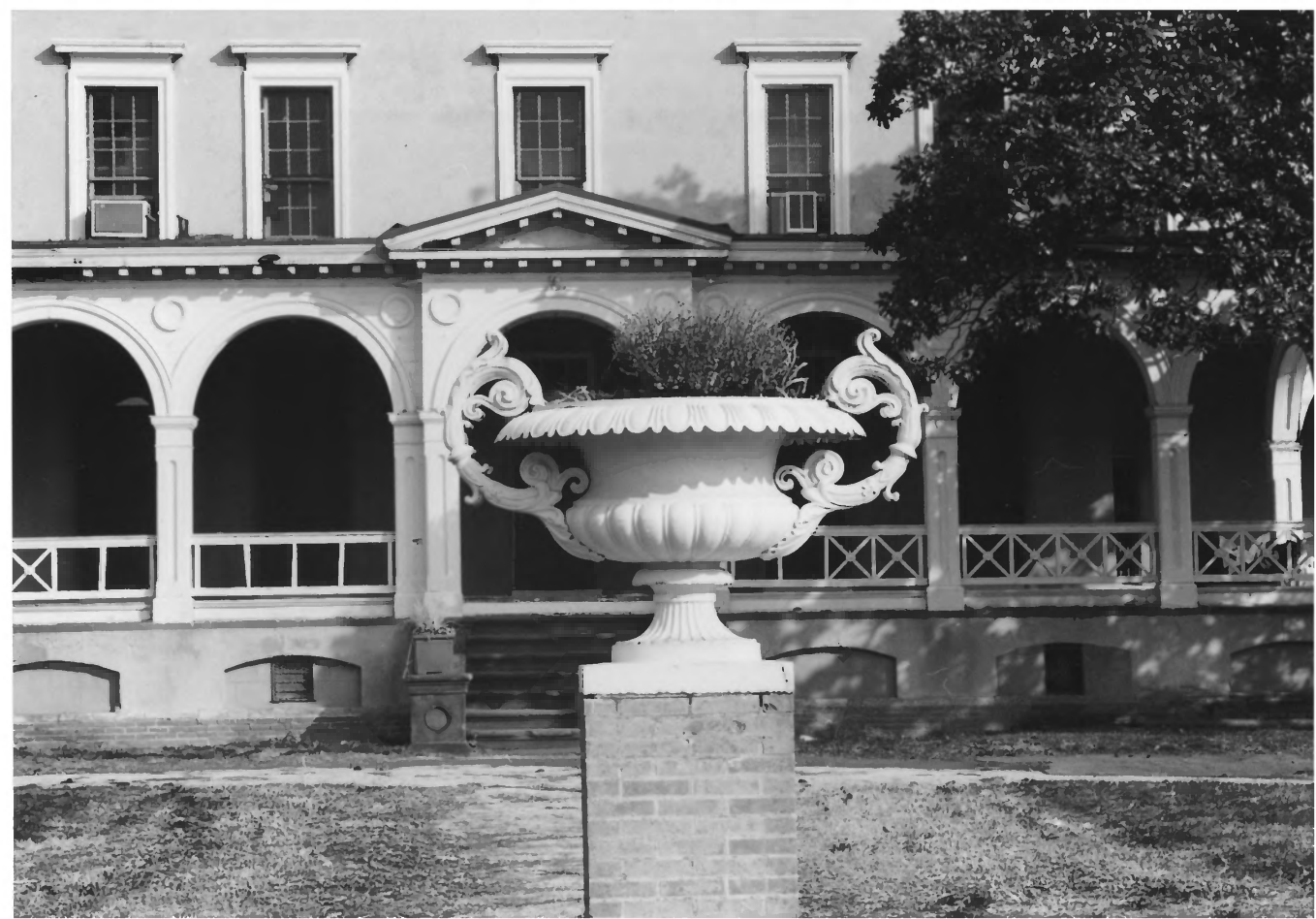
Gates at Mother's Garden, Clifton Park
Baltimore (City) Maryland

Johns Hopkins

5/2005

Maryland SHPO

18/24



B-4608

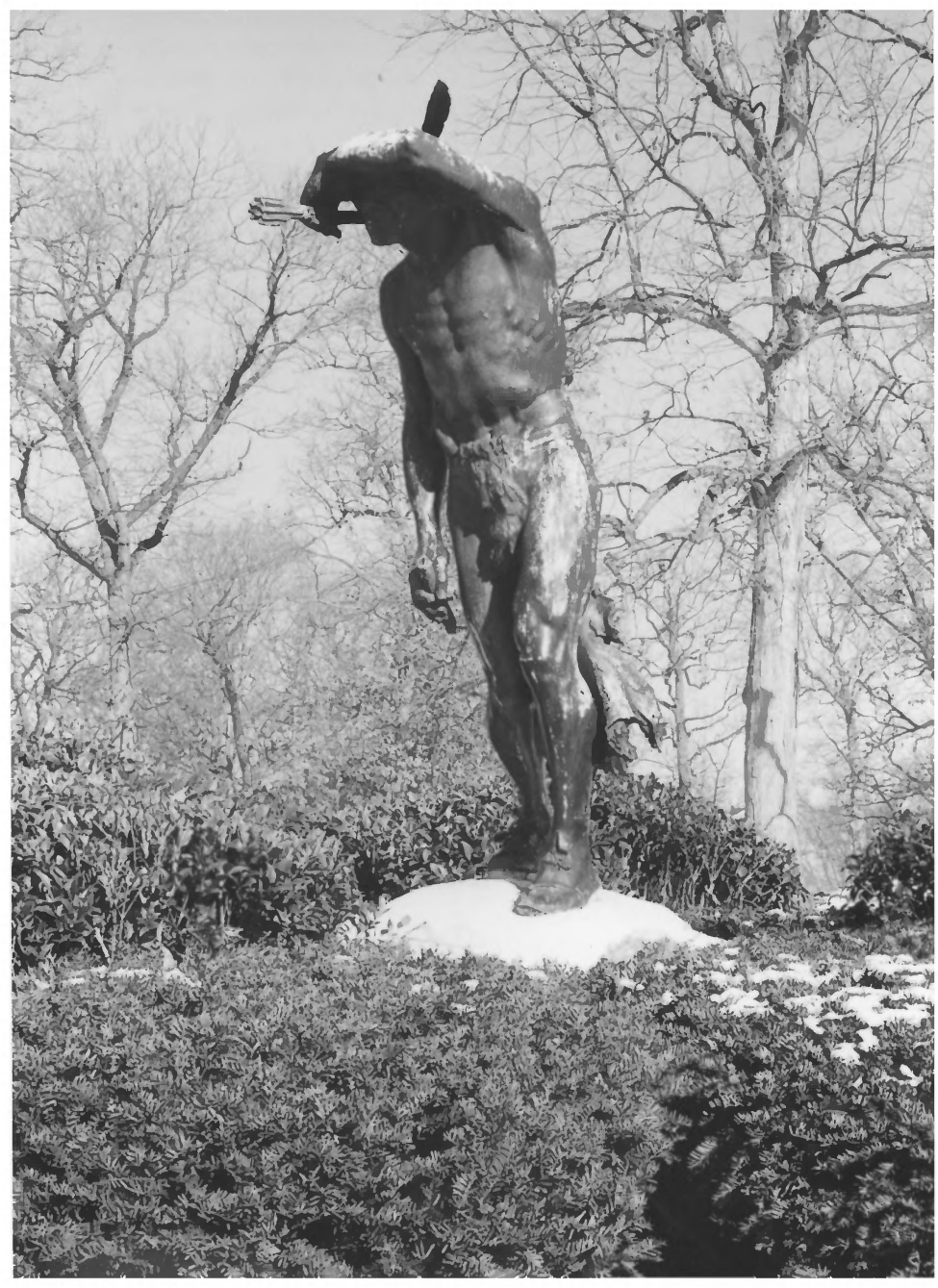
Urn in front of Clifton Mansion, Clifton Park
Baltimore (city) Maryland

Johns Hopkins

5/2005

Maryland SHPO

19/24



B-4608

"On the Trail" Sculpture, Clifton Park
Baltimore (City) Maryland

Johns Hopkins

2/2005

Maryland SHPO

20/24



B-4608

Southwest area of Clifton Park

Baltimore (City) Maryland

Johns Hopkins

2/2005

Maryland STIPO

View looking Southwest from Clifton Mansion Tower

2/24



B-4608

Western area of Clifton Park

Baltimore (City) Maryland

Johns Hopkins

2/2005

Maryland SHPO

View looking West from Clifton Mansion Tower

22/24



B-4608

North east area of Clifton Park

Baltimore (City) Maryland

Johns Hopkins

2/2005

Maryland STIPO

View looking northeast from Clifton Mansion Tower

23/24



B-4608

South area of Clifton Park

Baltimore (City) Maryland

Johns Hopkins

2/2005

Maryland SHPO

View looking south from Clifton Mansion Tower

24/24