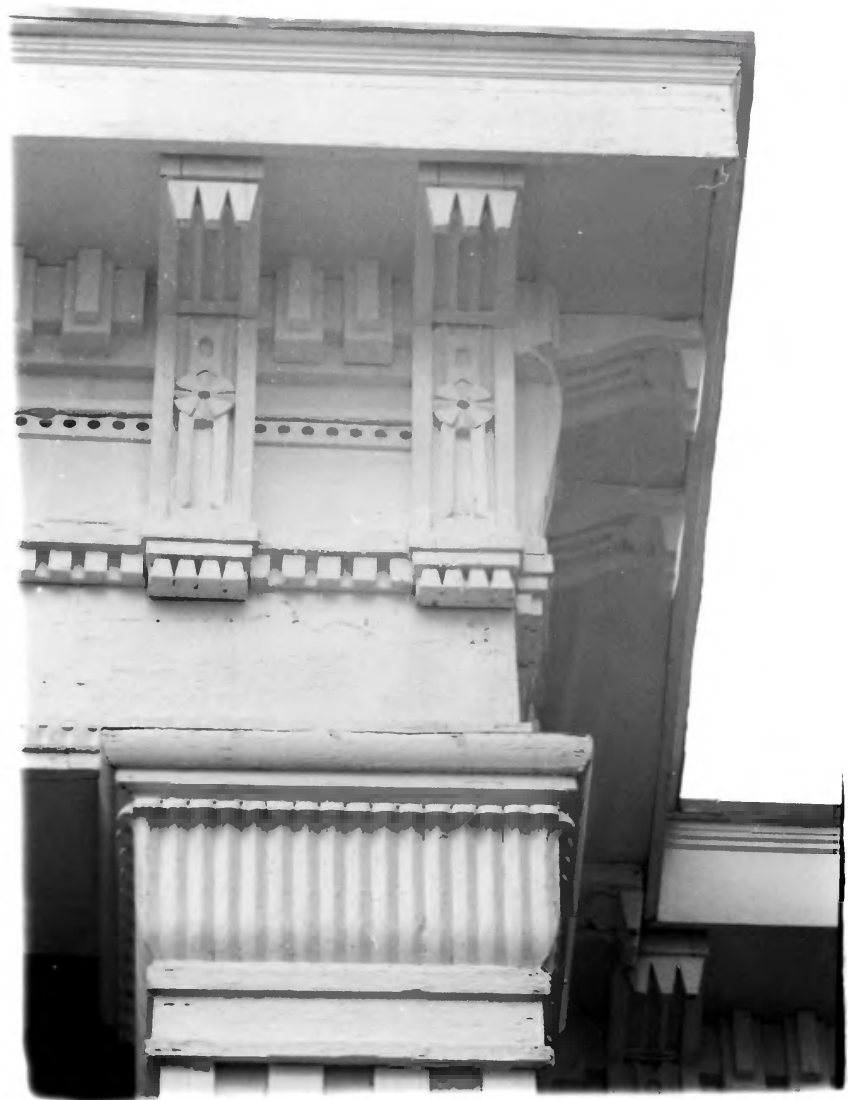




Merrifield, Samuel B., House  
Bloomfield, Nelson County, KY  
Camille Wells Summer 1978  
Kentucky Heritage Commission  
Frankfort, Kentucky

Photo 1 of 11 APR 1 1980  
East and south facades. Taken  
from the southwest.

JAN 29 1980



Merrifield, Samuel B., House  
Bloomfield, Nelson County, KY  
Camille Wells, Summer 1978  
Kentucky Heritage Commission  
Frankfort, Kentucky

Photo 2 of 11      APR 1 1980

Portico detail--taken from the  
east.

JAN 29 1980



Merriifield, Samuel B., House  
Bloomfield, Nelson County, KY  
Camille Wells Summer 1978  
Kentucky Heritage Commission  
Frankfort, Kentucky

Photo 3 *of 11* APR 1 1980  
South facade--taken from the  
south.

JAN 29 1980



Merrifield, Samuel B., House  
Bloomfield, Nelson County, KY  
Camille Wells, Summer 1978  
Kentucky Heritage Commission  
Frankfort, Kentucky

Photo 4 *of 11*

Rear view--taken from the west.

APR 1

1980

JAN 29 1980





APR 1 1980

Merrifield, Samuel B., House  
Bloomfield, Nelson County, KY  
Camille Wells Summer 1978  
Kentucky Heritage Commission  
Frankfort, Kentucky Photo 5 of 11  
Mantlepiece detail. JAN 29 1980



APR 1

1980

Merrifield, Samuel B., House  
Bloomfield, Nelson County, KY  
Camille Wells Summer 1978  
Kentucky Heritage Commission  
Frankfort, Kentucky Photo 6 of 11  
Parlor mantle detail. JAN 29 1980



APR 1

1980

Merrifield, Samuel B., House  
Bloomfield, Nelson County, KY  
Camille Wells, Summer 1978  
Kentucky Heritage Commission  
Frankfort, Kentucky Photo 7 *PH*  
Interior door trim. JAN 29 1980



APR 1

1980

Merrifield, Samuel B., House  
Bloomfield, Nelson County, Ky.

Camille Wells, Summer 1978

Kentucky Heritage Commission

Frankfort, Kentucky Photo 8 of 11

Interior door trim. JAN 29 1980





APR 1 1980

Merrifield, Samuel B., House  
Bloomfield, Nelson County, Ky.  
Camille Wells, Summer 1978  
Kentucky Heritage Commission  
Frankfort, Kentucky Photo 9  
Interior door trim detail.

JAN 29 1980



APR 1 1980

Merrifield, Samuel B., House  
Bloomfield, Nelson County, Ky.

Camille Wells Summer 1978

Kentucky Heritage Commission

Frankfort, Kentucky Photo 10 of 11

Interior door trim. JAN 29 1980



APR 1 1980

Merrifield, Samuel B., House  
Bloomfield, Nelson County, Ky.

Camille Wells Summer 1978

Kentucky Heritage Commission

Frankfort, Kentucky Photo 11 of 11

Smokehouse.

JAN 29 1980