

United States Department of the Interior
National Park Service

National Register of Historic Places
Registration Form

MAY 19 1989

NATIONAL
REGISTER

This form is for use in nominating or requesting determinations of eligibility for individual properties or districts. See instructions in *Guidelines for Completing National Register Forms* (National Register Bulletin 16). Complete each item by marking "x" in the appropriate box or by entering the requested information. If an item does not apply to the property being documented, enter "N/A" for "not applicable." For functions, styles, materials, and areas of significance, enter only the categories and subcategories listed in the instructions. For additional space use continuation sheets (Form 10-900a). Type all entries.

1. Name of Property

historic name Parker School
other names/site number N/A

2. Location

street & number 8900 Parker Road N/A not for publication
city, town Independence x vicinity
state Oregon code OR county Polk code 053 zip code 97351

3. Classification

Ownership of Property	Category of Property	Number of Resources within Property	
<input checked="" type="checkbox"/> private	<input checked="" type="checkbox"/> building(s)	Contributing	Noncontributing
<input type="checkbox"/> public-local	<input type="checkbox"/> district	<u>1</u>	_____ buildings
<input type="checkbox"/> public-State	<input type="checkbox"/> site	_____	_____ sites
<input type="checkbox"/> public-Federal	<input type="checkbox"/> structure	_____	_____ structures
	<input type="checkbox"/> object	_____	_____ objects
		<u>1</u>	_____ Total

Name of related multiple property listing: N/A
Number of contributing resources previously listed in the National Register N/A

4. State/Federal Agency Certification

As the designated authority under the National Historic Preservation Act of 1966, as amended, I hereby certify that this nomination request for determination of eligibility meets the documentation standards for registering properties in the National Register of Historic Places and meets the procedural and professional requirements set forth in 36 CFR Part 60. In my opinion, the property meets does not meet the National Register criteria. See continuation sheet.

Signature of certifying official [Signature] May 5, 1989
Date
Oregon State Historic Preservation Office
State or Federal agency and bureau

In my opinion, the property meets does not meet the National Register criteria. See continuation sheet.

Signature of commenting or other official _____ Date _____
State or Federal agency and bureau _____

5. National Park Service Certification

I, hereby, certify that this property is:

entered in the National Register. Mark Z. Baker Entered in the National Register 16 June, 1989
 See continuation sheet.

determined eligible for the National Register. See continuation sheet.

determined not eligible for the National Register.

removed from the National Register.

other, (explain:)

Signature of the Keeper

Date of Action

6. Function or Use

Historic Functions (enter categories from instructions)

Education/schoolhouse

Social/meeting hall

Current Functions (enter categories from instructions)

Domestic/single dwelling, studio

7. Description

Architectural Classification

(enter categories from instructions)

Late 19th and Early 20th Century

American Movements/Bungalow-Craftsman

Materials (enter categories from instructions)

foundation concrete

walls wood:weatherboards

roof asphalt/fiberglass shingles

other windows:glass

Describe present and historic physical appearance.

**United States Department of the Interior
National Park Service**

**National Register of Historic Places
Continuation Sheet**

Section number 7 Page 1

The Parker Schoolhouse is situated on the south slope of a small butte on the north bank of the Luckiamute River five miles south of Independence in Polk County, Oregon. The one and a quarter acre school yard is partly wooded and is surrounded by agricultural grasslands at lower elevations. The site lies approximately a half mile northwest of the town site of Parker, an historic station on the Southern Pacific Railroad branch which connected points north and south along the west bank of the Willamette River. It is a well-preserved example of small scale schoolhouse architecture in the Craftsman style. It was built in 1914. Its builder, according to tradition, was Art Lacey, a Parker area carpenter.

The school, one and a half stories in height, is nearly square in plan, measuring 34 x 36 feet, and it rests on a concrete basement. Its hipped roof has bell cast eaves with an unadorned boxed cornice. Exterior elevations are finished with drop siding and simple corner boards, water skirt and architrave moldings for openings, which typically are paired, double-hung windows with one-over-one lights.

A recessed porch at the northeast corner marks the entrance, as does a substantial louvered belfry, square in plan and capped with a low hipped roof, rising above the porch. The base of the belfry was clad with shingles, but drop siding was used above a string course. The roof deck of the belfry originally was surmounted by a railing. The corner post and antae of the porch are finished with square block capitals, and there is a solid railing on the north side. On the school's north elevation the roofline is broken by a brick stove chimney and a hip roofed, three-light dormer.

The porch at the northeast corner shelters the only entrance. Access to the interior is through a 10 x 10-foot cloak room adjacent to a 10 x 10-foot storage room and office. From the storage room, stairs on the west wall ~~stairs~~ give access to the basement, which houses wood room and furnace. Concrete exterior stairs on the north wall of the basement lead to the school yard.

Windows in the classroom are six feet above the floor. These and the square lights in the north dormer have been reglazed in their original sash and frames.

Exterior drop siding has been rained and painted its original dove grey body color. The historic paint treatment included a contrasting trim color. Roof covering is fiberglass/asphalt, and the bell tower openings have been elongated slightly, glazed and masked with louvered panels.

The schoolhouse has been rehabilitated without appreciable reconfiguration of the interior. The main 26 x 36-foot classroom space remains un-subdivided to serve as artist studio, kitchen and living space. The interior walls are fir tongue and groove running vertically to the height of the 14-foot ceiling. Original fir flooring has been refinished and remains exposed to view.

8. Statement of Significance

Certifying official has considered the significance of this property in relation to other properties:

nationally statewide locally

Applicable National Register Criteria A B C D

Criteria Considerations (Exceptions) A B C D E F G

Areas of Significance (enter categories from instructions)

Architecture

Period of Significance

1914

Significant Dates

1914

Cultural Affiliation

N/A

Significant Person

N/A

Architect/Builder

Art Lacey

State significance of property, and justify criteria, criteria considerations, and areas and periods of significance noted above.

See continuation sheet

9. Major Bibliographical References

McArthur, Lewis A., Oregon Geographic Names. Portland, Oregon: Oregon Historical Society, 1974. Fourth edition revised and enlarged by Lewis L. McArthur. Page 569.

Oregon Historical Quarterly, Vol. 27, 1926, page 439.

1936 census records of Polk County School District No. 11, Polk County Education Service District.

Oberst, Gail, "Welcome to beautiful downtown Parker," Independence, Sun-Enterprise (August 19, 1987), 9A.

Interview with Lorene Newton, teacher at Parker School 1931-1935.

Interviews with Leroy Cline and Philip Sterling, two of Lorene Newton's former pupils at Parker School.

See continuation sheet

Previous documentation on file (NPS):

- preliminary determination of individual listing (36 CFR 67) has been requested
- previously listed in the National Register
- previously determined eligible by the National Register
- designated a National Historic Landmark
- recorded by Historic American Buildings Survey # _____
- recorded by Historic American Engineering Record # _____

Primary location of additional data:

- State historic preservation office
- Other State agency
- Federal agency
- Local government
- University
- Other

Specify repository:

Polk County Education Service District
322 Main Street, Dallas OR 97338

10. Geographical Data

Acreeage of property 1.28 acres Monmouth, Oregon 1:24000

UTM References

A

1	0
---	---

4	8	3	3	5	0
---	---	---	---	---	---

4	9	5	8	3	0	0
---	---	---	---	---	---	---

 Zone Easting Northing

C

--	--

--	--	--	--	--	--

--	--	--	--	--	--	--

B

--	--

--	--	--	--	--	--

--	--	--	--	--	--	--

 Zone Easting Northing

D

--	--

--	--	--	--	--	--

--	--	--	--	--	--	--

See continuation sheet

Verbal Boundary Description

The nominated area located in NW $\frac{1}{4}$ NW $\frac{1}{4}$ Section 20, Township 9S, Range 4W, Willamette Meridian, in Polk County, Oregon. It is legally described as Tax Lot 501 at said location.

See continuation sheet

Boundary Justification

The nominated area is comprised of the 1.28 acre parcel set aside for school purposes near the historic townsite of Parker about 1880. It has been occupied by the subject building since 1914. The north boundary is 265.32', west boundary 229.02', south boundary 264' and the east boundary 196.02'.

See continuation sheet

11. Form Prepared By

name/title <u>Richard and Cathy Robertson</u>	date <u>December 15, 1988</u>
organization <u>owners of nominated property</u>	telephone <u>(503) 838-3202</u>
street & number <u>8900 Parker Road</u>	state <u>Oregon</u> zip code <u>97351</u>
city or town <u>Independence</u>	

**United States Department of the Interior
National Park Service****National Register of Historic Places
Continuation Sheet**Section number 8 Page 1

The one-room schoolhouse near the old townsite of Parker in the Luckiamute drainage five miles south of Independence in Polk County, Oregon was built in 1914. Parker townsite, platted in 1880, was a station on the Southern Pacific Railroad branch line and served the surrounding agricultural community as location of a post office and store. The schoolhouse, sited on a wooded hillside to the northwest of the townsite, is among the few vestiges of the historic community. It is the second school on the site, which was set aside for educational purposes when the town was platted. The school was operated as part of Polk County School District No. 11 and served the area west of Buena Vista in roughly a 3-mile radius from Parker.

Parker School is locally significant in the category of architecture under National Register Criterion C. It is one of a small group of intact historic rural schoolhouses remaining in Polk County. Based on official inventory data, only two others represent the traditional one-room type antedating 1920. The other documented comparable buildings are Ballston School (1855) and Spring Valley School (c. 1890) in north central and northeastern Polk County, respectively. Parker School thus rounds out the chronology of an enduring type. Although the southeastern part of the county has not been systematically surveyed to date, Parker School appears to be the quintessential one-room school in the district. It is known that a one-room school of 1904 still stands at Buena Vista, several miles to the east. It was surplused in the consolidation of rural school districts and was radically altered. One-room schools at Elkins, Greenwood and Hopville are intact, but Parker School ranks above them in architectural integrity.

The builder of the nominated schoolhouse was a Parker area carpenter named Art Lacey. The original school on the site was destroyed by fire. The one and a half-story, one-room schoolhouse of 1914 is a simple version of Craftsman architecture taking the traditionally boxey form (it measures 34 x 36 feet in plan) with hipped roof having bell cast eaves and an unadorned boxed cornice. Exterior elevations are finished with drop siding and simple corner boards, water skirt and architrave moldings for openings, which typically are paired, double-hung windows with one-over-one lights.

The school rests on a high concrete basement. A recessed porch at the northeast corner marks the entrance, as does a substantial louvered belfry, square in plan and capped with a low hipped roof, rising above the porch. The base of the belfry was clad with shingles, but drop siding was used above a string course. The corner post and antae of the porch are finished with square block capitals, and there is a solid railing on the north side. On the school's north elevation the roofline is broken by a brick stove chimney and a hip roofed, three-light dormer.

**United States Department of the Interior
National Park Service**

**National Register of Historic Places
Continuation Sheet**

Section number 8 Page 2

In its historic period of use for educational purposes, which spanned the period between the World Wars, the school served children in grades one through eight, an average of about 20 per year. As is traditional in rural communities, the schoolhouse served the additional function of general gathering place. It was the setting of school board meetings, farmers' union meetings, meetings of women's clubs, church services, Sunday school classes, Thanksgiving dinners, and dances.

The school was closed in 1945 and thereafter continued to serve as community center and meeting hall. Abandoned even as a social hall in the 1960s, the school was acquired by its present owners in 1987 and rehabilitated for residential use. Numerous essential structural repairs, such as roof replacement, were carried out to bring the building into useful condition. The only apparent alterations on the exterior are the addition of a small deck with railing on the east side of the porch and enclosure of the belfry with sliding, glazed window assemblies which are now masked by louvered panels. The front door was replaced.

The interior remains as originally finished, with vertical fir tongue and groove wall cover. The entry vestibule and cloak room on the north give into an open classroom, in which the only modification is the addition of kitchen fixtures along the east wall. A bedroom and bath occupy a loft space along the north wall, above the cloak room and storage room. Because the belfry was incorporated as an extra sleeping space, it was necessary to install glazed window assemblies in the belfry openings.

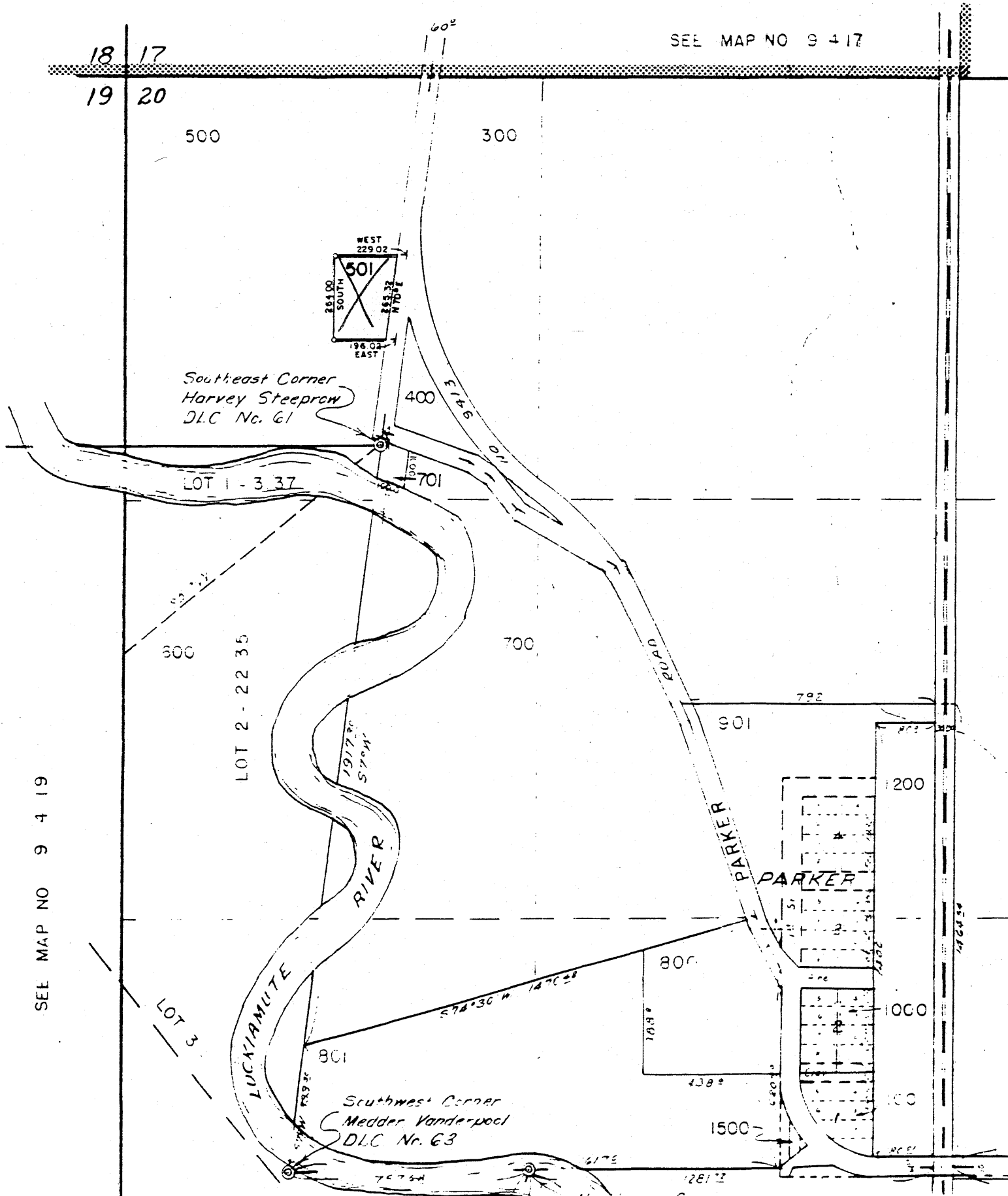
Parker, the community platted in 1880, was situated on the railroad just above the flood plain of the Luckiamute River. It was named for Lon Parker, a pioneer settler. The Bloomington post office was established on May 25, 1852, near the present site of Parker, with Eli W. Foster the first postmaster. The office was closed in 1863. The railroad was built through this area in the late 1870s and Parker's station was then established. Years later the name of the station was changed to Parker. The Parker post office was established in September 1880, and was closed in March, 1882. From 1884 to 1907 it was operated with the name Parker. In 1914 the Parker post office was re-established and operated to 1927.

SEC. 20 T9SR4W M

POLK COUNTY

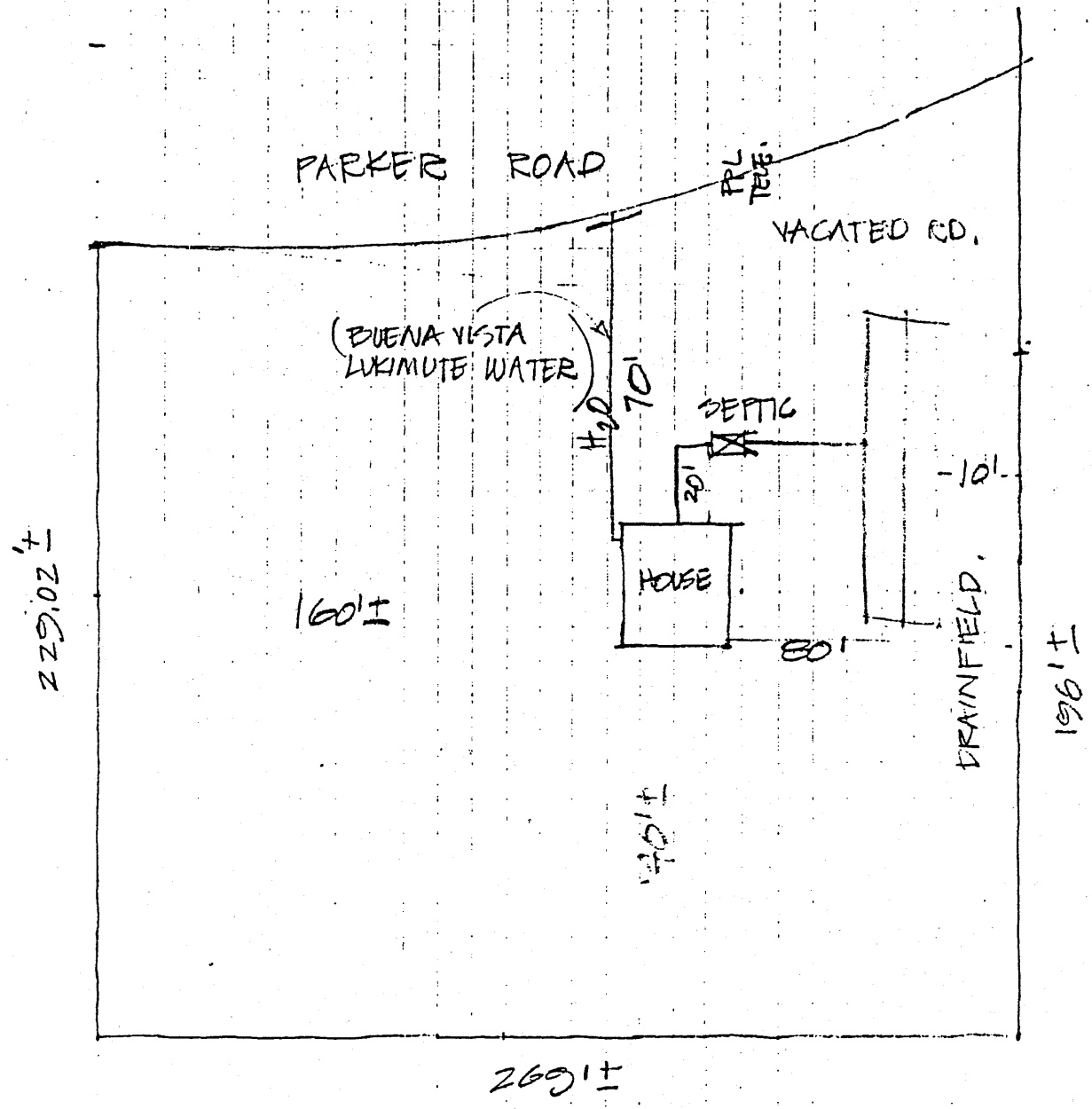
SCALE 1" = 400'

SEE MAP NO 9 4 17



SEE MAP NO 9 4 19

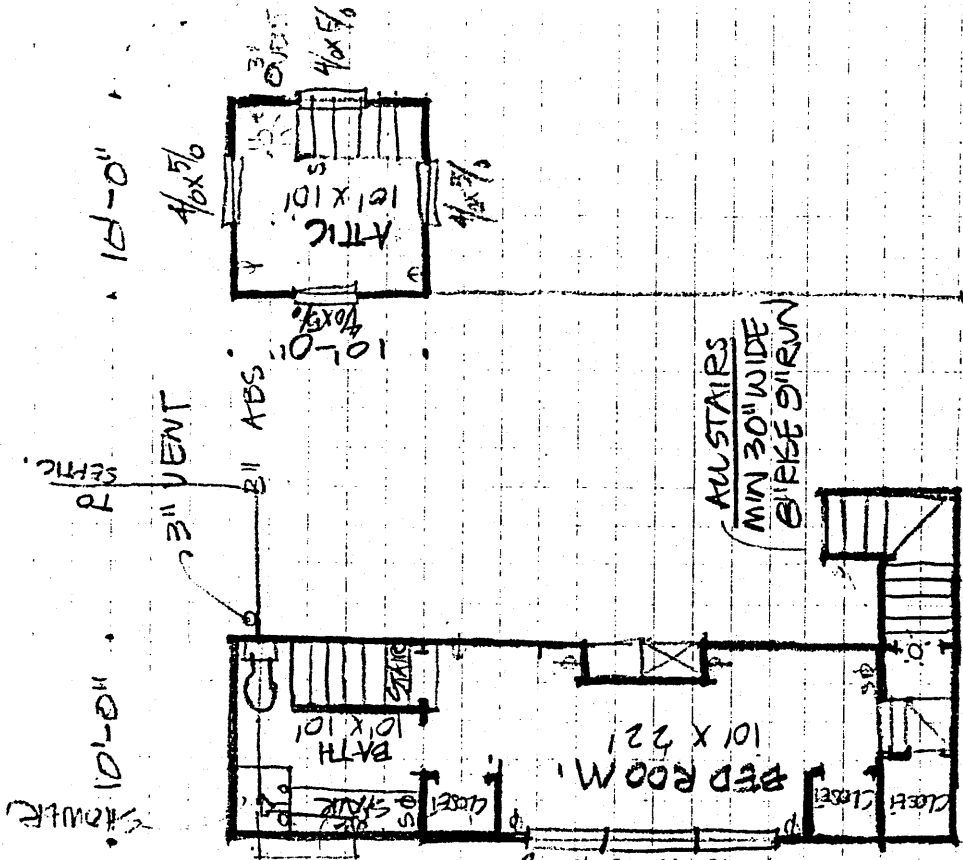
← NORTH 1/4" = 10'-0"



PLOT PLAN - SEPTIC SYSTEM

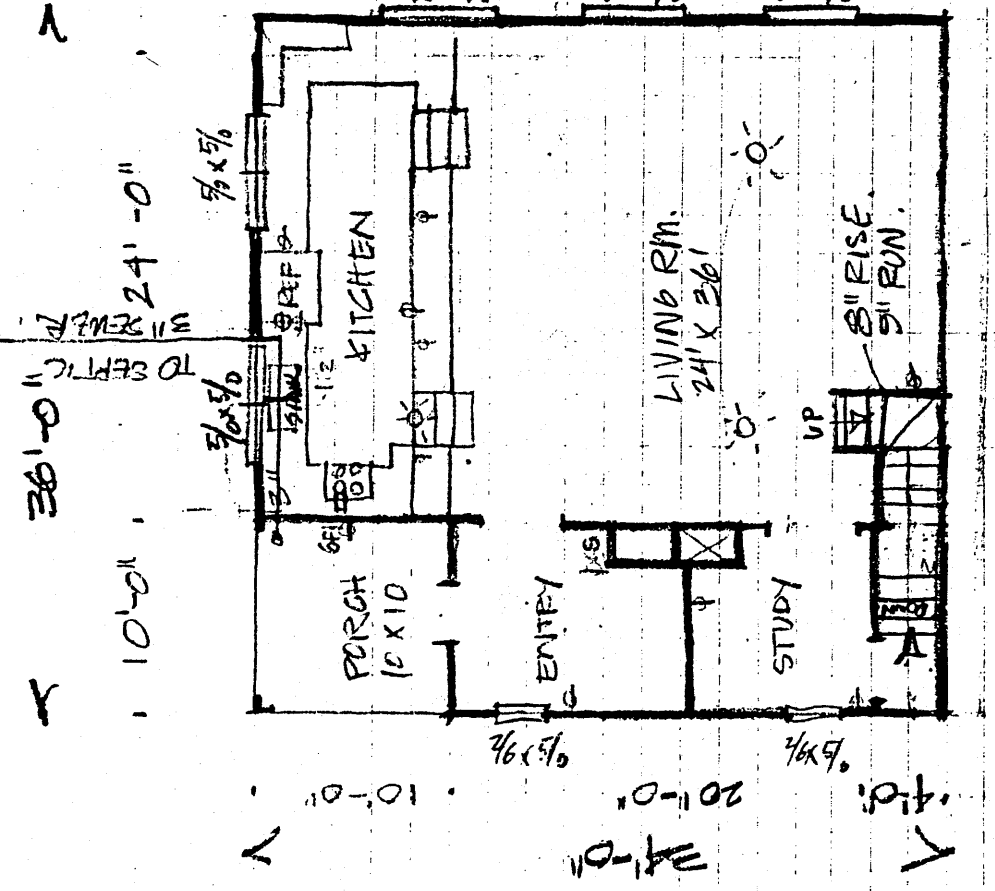
RICHARD ROBERTSON
 8900 PARKER RD.
 INDEPENDENCE, OR 97315
 PH. 838.3200

13-05-09420



2ND FLOOR

3RD FLOOR



1ST FLOOR
(NOTE FULL BASEMENT)

NORTH - SCALE 1/4" = 10'-0"

RICHARD ROBERTSON
5500 PARKER ROAD
INDEPENDENCE OR 97315

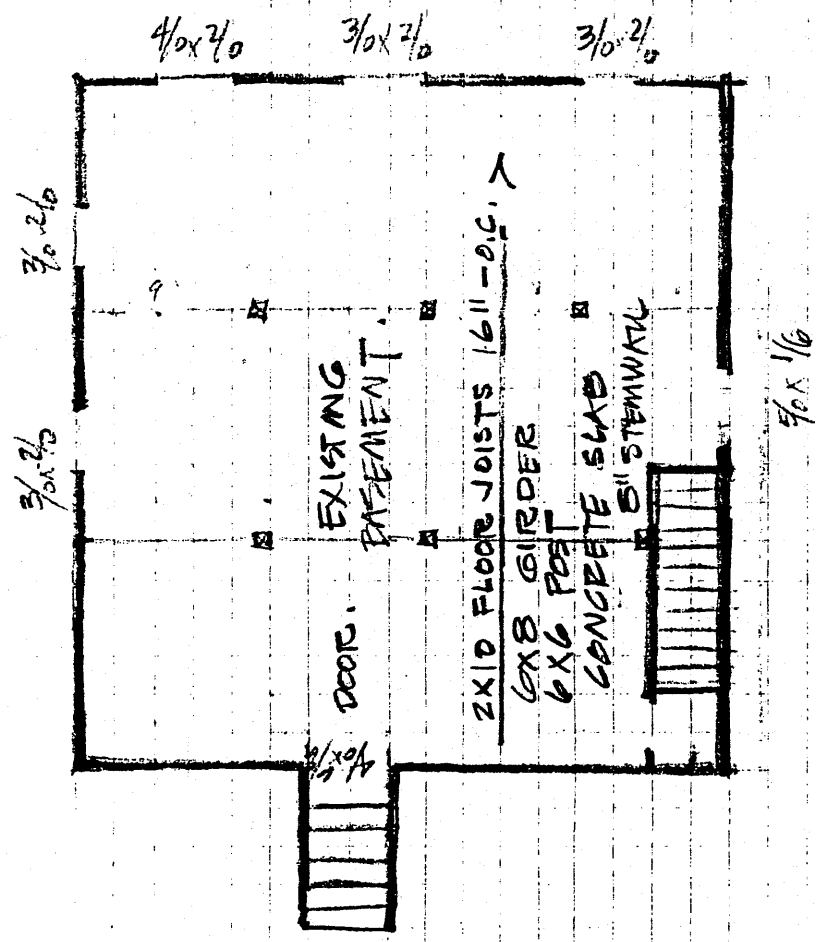
PH-038.3202

13-05-09+20
TL-500



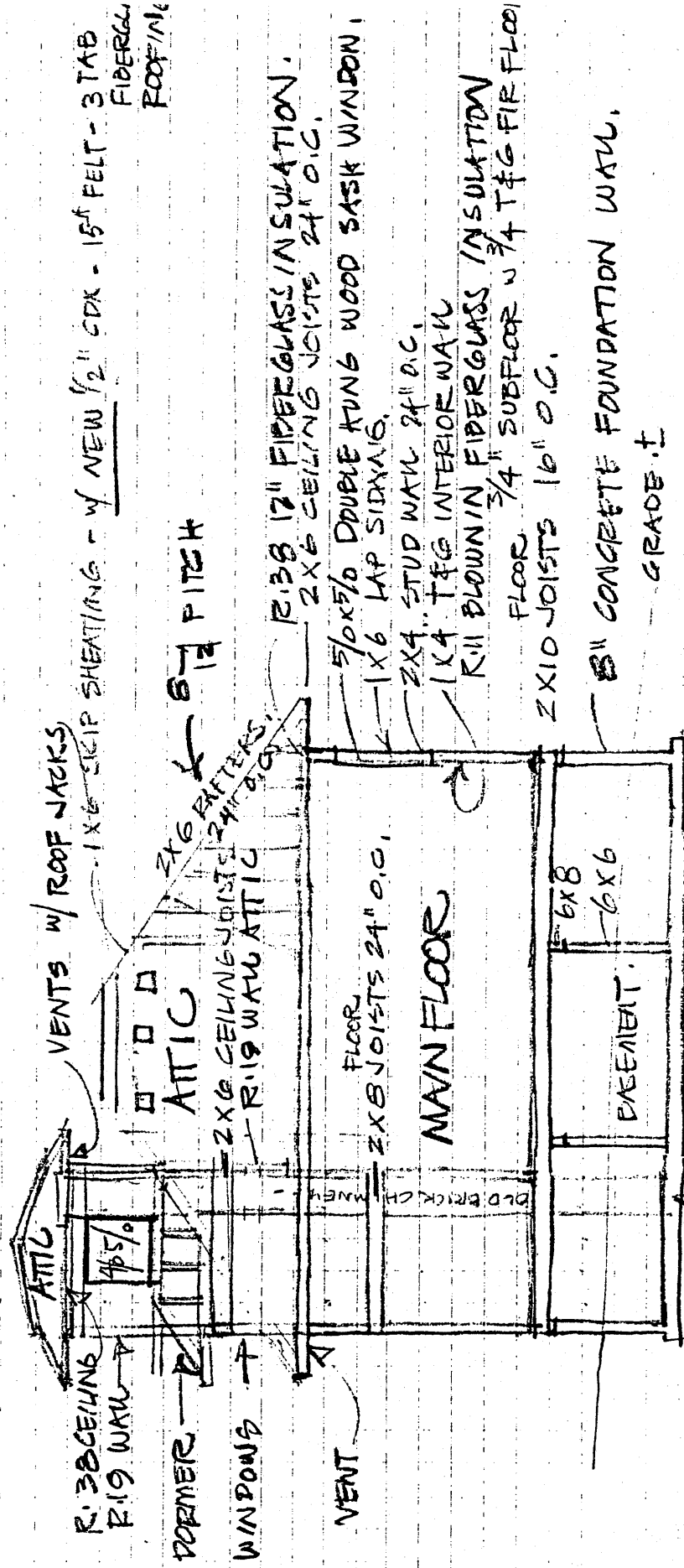
36'-0"

12'-0" | 12'-0" | 12'-0" |



21

ROBERTSON
 PARKER SCHOOL HOUSE



FIBERGLASS ROOFING

NEW 1/2" CDX - 15' FELT - 3 TAB

8/12 PITCH

R-38 12" FIBERGLASS INSULATION.
 2x6 CEILING JOISTS 24" O.C.

5/8" DOUBLE KUNG WOOD SASK WINDOW,
 1x6 LAP SIDING,
 2x4 STUD WALL 24" O.C.

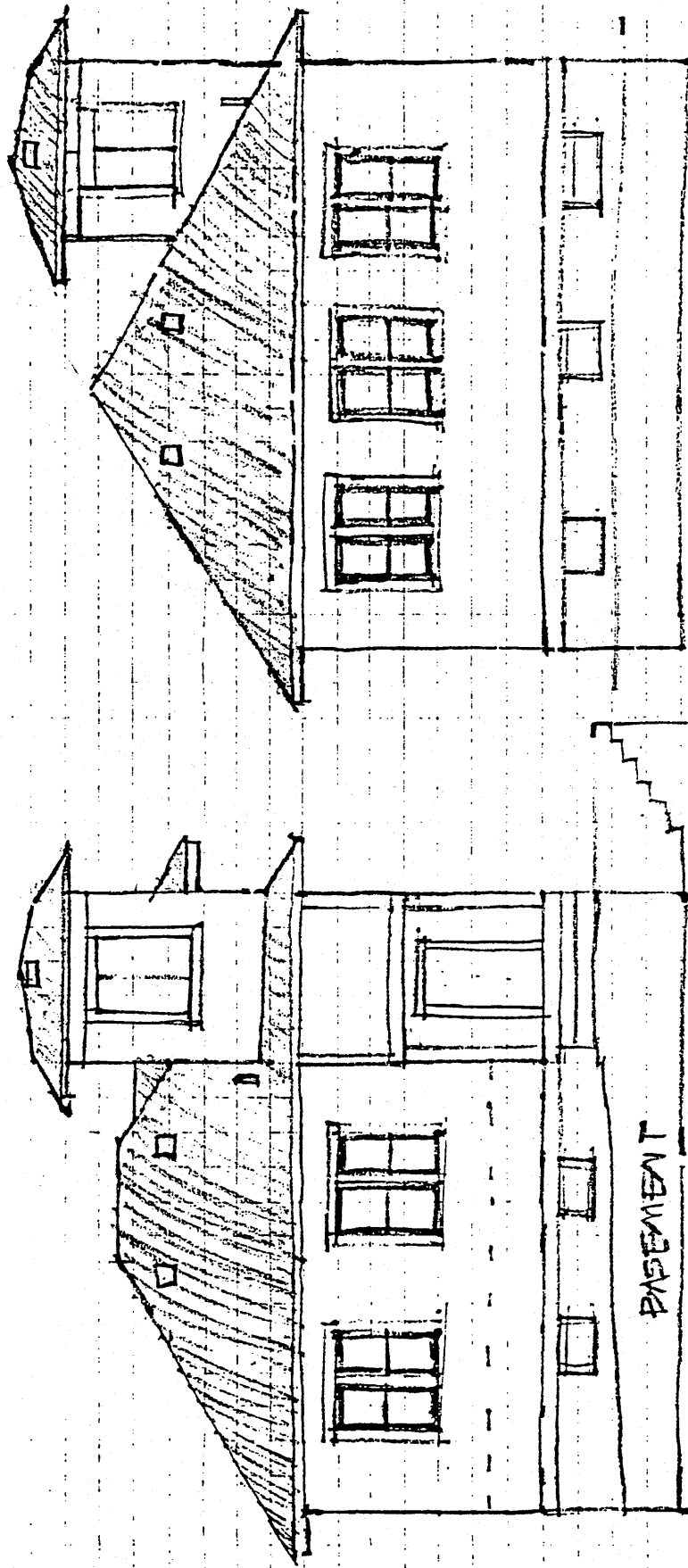
1x4 T&G INTERIOR WALL

R-11 BLOWN IN FIBERGLASS INSULATION
 FLOOR 3/4" SUBFLOOR w/ 3/4" T&G FIR FLOOR
 2x10 JOISTS 16" O.C.

8" CONCRETE FOUNDATION WALL,
 GRADE ±

OLD CHIMNEY - WILL NOT USE IN PRESENT CONDITION.
 MORTAR IS GOOD TO ROOF - NEEDS REPOINTING & STAINLESS STEEL INSERT.

WEST ELEVATION
 TYPICAL CONSTRUCTION



SOUTH ELEVATION

EAST ELEVATION

ROBERTSON
OLD PARKER SCHOOL HOUSE