

TENNESSEE MULTIPLE PROPERTY FORM

RECEIVED

MAR 03 1988

NATIONAL REGISTER

Title: Historic Resources of Williamson County

Historic Name: Pollard, George, House (WM-170)

Common Name: Pollard, George, House

Classification: Building

Owner: Gil Fuqua, Route # 5, Wilson Pike, Franklin, TN 37064

Location: On Wilson Pike one and two-tenths mile south of Peytonsville Road junction.

Contributing:

Buildings 1  
Structures 0  
Sites 0

Non-Contributing:

Buildings 0  
Structures 1  
Sites 0

Total: 1

Total: 1

Description:

The George Pollard House is a one-story frame, Greek Revival influenced central passage plan residence constructed ca. 1845. On the main (southwest) facade is distyle in antis porch with square Doric motif columns and an original railing with square balusters. The main entrance has double doors of two recessed panels, four-light sidelights with frame lower panels, and a five-light transom. The door surround has fluted moldings and bulls eye corner blocks. Two other doors lead onto the porch from projecting corner bays. These are single frame design with two panels and fluted surrounds.

Flanking the main entrance are large six-over-six sash windows with fluted surrounds, bulls eye corner blocks and ca. 1900 shutters. The recessed central three bays have flush horizontal board siding while the exterior of the rest of the house has weatherboard siding. The house has a stone foundation, gable roof of added wood shingles, and an interior and an exterior original brick chimney. The other windows on the house are six-over-six sash. Windows in the half-story gable are four-over-four sash and the rear facade has an added ca. 1970 bay window and original four-over-four sash. Also at the rear is an original gable roof enclosure with an arched frame door leading to the cellar. The door on the west facade has an original two panel design.

The interior has not been altered and retains its original Greek Revival influenced mantles with Doric designs. All interior two panel doors are original and they retain their locks and other hardware. At the rear is a one-story staircase with a simple newel post and square balusters. To the northwest of the house is a ca.1980 shed or gazebo with lattice walls. The house sits on a large rural lot on the side of a hill facing Wilson Pike.

Period of Significance: ca. 1845

Area of Significance: Architecture

Criterion: C

Architect/Builder: Unknown

Statement of Significance:

The George Pollard House is a notable one-story central passage plan residence constructed ca. 1845. The house is of unusual design in the county and is reflective more of vernacular designs of the period from the lower South. The house's distyle in antis porch, large floor to ceiling windows and three entrances on the main facade are rare details for ante-bellum residences constructed in the county. The house retains both interior and exterior original detailing and alterations have been confined to the rear facade.

George Pollard was born in 1815 and during the 1830s he worked as a dry goods clerk in Columbia and Nashville. In 1836, he operated his own business in Carrollton, Mississippi until 1842 when he returned to Williamson County. Pollard purchased 500 acres of farmland along Wilson Pike and constructed this one-story frame house ca. 1845. Tradition states that Pollard built his house in imitation of homes he had seen in Mississippi. His residence is unusual in its design and no other residence resembles it in the county.

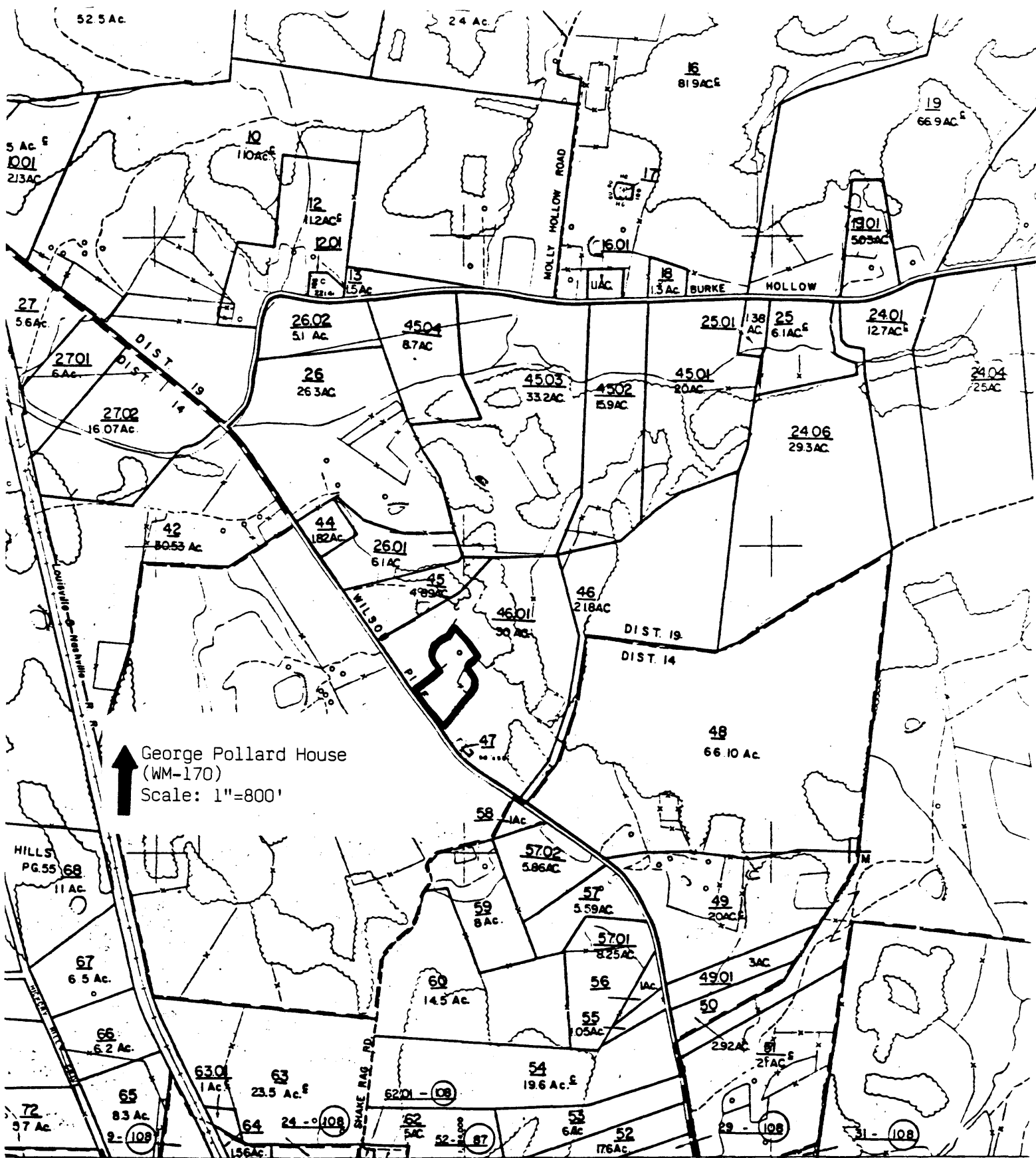
Pollard was listed in 1859 as owning 476 acres and 11 slaves and his worth in 1860 was \$16,000 in real estate and \$13,000 in personal property. He was elected justice of the peace in 1848 and served until 1854. After his death his property remained in the hands of his descendants for many years. The house has not been significantly altered and retains its original site and setting.

Acreage: 3.0 acres

UTM References: Nolensville Quad/16/ 524420/3971960

Verbal Boundary and Justification: The boundary for the George Pollard House is illustrated on accompanying Williamson County tax map # 87, lot 46.01. The boundary is drawn to include the house and its approaches. The boundary is defined on the north, east and west by fences and on the south by Wilson Pike. The boundary is drawn to include all property sufficient to protect the historical setting of the site.

Supplemental Bibliographical References: Goodspeed History of Tennessee



↑ George Pollard House  
(WM-170)  
Scale: 1"=800'

27. (C) PARCEL & CONTROLLING MAP BY
- FENCE
  - CEMETERY
  - CHURCH
  - SCHOOL
  - WOODED AREA
  - POND

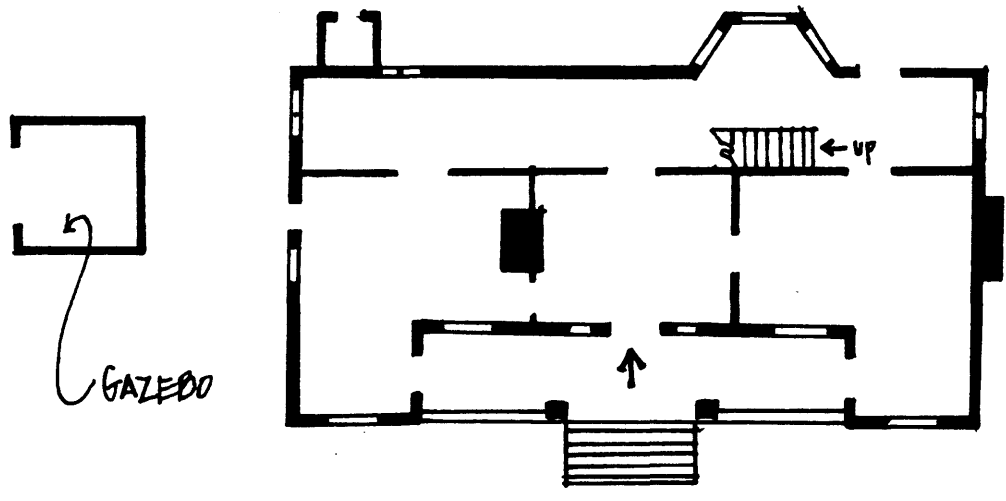
- CREEK
- STATE LINE
- CO. LINE
- CORPS LIMITS
- TRANSMISSION LINE
- ROAD
- RAILROAD
- RIDGE LINE

00	01	02
03	04	05
06	07	08
09	10	11

— REVISIONS —

1/1/78	1	14
2/3/78	7	15
3/6/78	10	16
4/9/78	10	16
5/4/78	10	16

\*170 GEORGE POLLARD HOUSE



TO  
WILSON PIKE  
↓

NOT TO SCALE