



567

United States Department of the Interior
National Park Service

National Register of Historic Places
Registration Form

This form is for use in nominating or requesting determinations for individual properties and districts. See instructions in How to Complete the National Register of Historic Places Registration Form (National Register Bulletin 16A). Complete each item by marking "x" in the appropriate box or by entering the information requested. If any item does not apply to the property being documented, enter "N/A" for "not applicable." For functions, architectural classification, materials, and areas of significance, enter only categories and subcategories from the instructions. Place additional entries and narrative items on continuation sheets (NPS Form 10-900a). Use a typewriter, word processor, or computer, to complete all items.

1. Name of Property

historic name East Main Street Cemetery

other names/site number _____

2. Location

street & number East Main Street not for publication

city or town Dalton vicinity _____

state Massachusetts code MA county Berkshire code 003 zip code 01226

3. State/Federal Agency Certification

As the designated authority under the National Historic Preservation Act of 1986, as amended, I hereby certify that this nomination request for determination of eligibility meets the documentation standards for registering properties in the National Register of Historic Places and meets the procedural and professional requirements set forth in 36 CFR Part 60. In my opinion, the property meets does not meet the National Register Criteria. I recommend that this property be considered significant nationally statewide locally. (See continuation sheet for additional comments.)

Judith B. McDonough
Signature of certifying official/Title Judith B. McDonough, Executive Director
Massachusetts Historical Commission, State Historic Preservation Officer

4/28/2000
Date

State or Federal agency and bureau _____

In my opinion, the property meets does not meet the National Register criteria. (See continuation sheet for additional Comments.)

Signature of certifying official/Title _____

Date _____

State or Federal agency and bureau _____

4. National Park Service Certification

- I, hereby certify that this property is:
- entered in the National Register
 See continuation sheet.
 - determined eligible for the National Register
 See continuation sheet.
 - determined not eligible for the National Register
 - removed from the National Register
 - other (explain): _____

[Signature]
Signature of the Keeper

Date of Action

Edson R. Beall 6-2-00

East Main Street Cemetery
Name of Property

Berkshire, MA
County and State

5. Classification

Ownership of Property

(Check as many boxes as apply)

(Check only one box)

- private
- public-local
- public-State
- public-Federal

- building(s)
- district
- site
- structure
- object

Number of Resources within Property

(Do not include previously listed resources in the count.)

Contributing	Noncontributing	
_____	_____	building
1	_____	sites
_____	1	structures
_____	_____	objects
1	1	Total

Name of related multiple property listing

(Enter "N/A" if property is not part of a multiple property listing.)

n/a

Number of contributing resources previously listed in the National Register

0

6. Function or Use

Historic Functions

(Enter categories from instructions)

FUNERARY: cemetery

Current Functions

(Enter categories from instructions)

FUNERARY: cemetery

7. Description

Architectural Classification

(Enter categories from instructions)

Materials

(Enter categories from instructions)

foundation _____

walls _____

roof _____

other stone, metal _____

Narrative Description

(Describe the historic and current condition of the property on one or more continuation sheets.)

United States Department of the Interior
National Park ServiceNational Register of Historic Places
Continuation SheetEast Main Street Cemetery
Dalton (Berkshire Co.), Mass.Section number 7 Page 1

DESCRIPTION

Dalton's East Main Street Cemetery is a small (two acres) graveyard typical of eighteenth-century family or neighborhood burial grounds. Approximately 255 markers or fragments of markers (including footstones), ranging from 1781 to 1895, are visible today. About 200 of them are legibly marked with names and dates; the remainder are either illegible, or are small stones that are unmarked or only marked with initials. Many of these small stones are probably footstones; a few may mark the graves of persons who could not afford larger headstones. Laid out with an eye to practicality rather than landscape design, the graveyard is set up in twenty-four irregular rows averaging a dozen markers per row, most of them simple tablet headstones carved of marble and similar in size and scale. The cemetery boasts only a few monumental markers for some of its more prominent families. The graveyard recalls the time of Dalton's first settlement, when the dead were often buried in a simply laid out plot of ground set aside from a family's farmland. (See photos 1, 2, and 3.)

East Main Street forms part of a state highway (Route 8) leading from Connecticut through western Massachusetts north to Vermont. A broad, well-traveled rural route, the road takes on the aspect of a wide suburban residential street as it approaches Dalton's town center. Homes around the East Main Street Cemetery tend to be medium-sized mid-nineteenth to late twentieth-century single-family residences, set on well-maintained, spacious lots and shaded by mature trees. The terrain slopes downward from the north side of East Main Street, through the cemetery, and down toward the Housatonic River, so that homes across the street (to the north) from the cemetery are somewhat elevated from the level of the street. The cemetery itself sits on a two-acre parcel of land that slopes gently down from the road toward a woods of mixed evergreen and deciduous trees. Undergrowth of periwinkles (*vinca minor*), a popular eighteenth- and nineteenth-century perennial, has gone wild and now blankets the woods, providing a background of glossy dark green leaves with deep purple flowers in the springtime. The woods provide a buffer between the cemetery and the Chamberlain Playground laid out at the base of the hill to the south of the cemetery. On its northern edge, the cemetery is bounded by a modern chain-link fence. (See photo 1.)

The graveyard shows little evidence of landscaping or design efforts on the part of its creators. Five substantial tree stumps inside the fence line, another in the southwestern quadrant, and a seventh between the twenty-second and twenty-third rows of headstones indicate that the cemetery was once shaded by a number of mature trees. Trees remaining on the cemetery land include a massive horse chestnut on the southern edge, several large pine trees in the southeastern corner, and a spruce tree at the eastern boundary. Three young street trees outside the cemetery provide shade at the plot's northern edge. Formally cropped privet shrubs flank the cemetery's two gates (one in the center and one at the northwest corner) and mark its northeastern corner. (See photo 1.) These shrubs are all that remains of a privet hedge planted along the cemetery's northern boundary in 1962. (The cemetery was originally surrounded by a stone wall, which was replaced by a board fence in 1846.) The cemetery has no formal paths; the only walkways are the grassy aisles between the rows of stones. Wild thyme mixed with grasses provides a fragrant lawn, carpeting the cemetery with a haze of spicy-scented pink and purple blossoms in mid-summer.

The visual focus of the cemetery is its main gate, which opens on to a wide grassy aisle flanked by two square pedestal-style monuments dedicated to members of the Chamberlin family, who established the cemetery for burial of family members and neighbors (about one-fifth of the cemetery's stones are dedicated to members of the Chamberlin family). Chamberlin graves line this central aisle, and are some of the largest

(continued)

United States Department of the Interior
National Park ServiceNational Register of Historic Places
Continuation SheetEast Main Street Cemetery
Dalton (Berkshire Co.), Mass.Section number 7 Page 2

in the cemetery. (See photo 3.) The eastern two-thirds of the cemetery contains most of the largest stones; here they are lined up quite close together in fifteen nearly continuous rows of pale gray markers. As one progresses toward the western section of the cemetery, gravestones become more scattered and rows grow shorter, giving the western portion a more open appearance. Most of the stones are arranged in short family plots set out along relatively straight rows; markers are not clustered the way they tended to be later in the nineteenth century, as Americans moved toward picturesque cemeteries that exhibited deliberate design elements. The markers are generally oriented facing west, so that the afternoon sun falls on the face of the stones.

Grave markers consist primarily of vertical tablets from two to five feet in height, some with curved and scalloped tympana, others simple rectangular or arched at the top. (See photo 2.) The nearly universal use of a similar pale gray marble (originally white) for grave markers gives the cemetery a visual unity. Only one stone, the newest (Mary Chamberlin [1818-1895], Row 19, #2), is made of gray granite. It's possible that some of the marble monuments here may have been cut from local stone. In his 1885 history of Berkshire County, J. E. A. Smith notes that local stonecutters used Housatonic River valley marble in many local buildings and monuments. Lee, West Stockbridge, Sheffield, Lanesboro, Pittsfield, Richmond, and New Ashford all had quarries at the time of Smith's writing (Smith, Vol. I, pp. 21-23)

Headstones range in age from 1781 to 1895, with markers from 1820 to 1850 predominating. While the earliest stones (those dating from 1781 to 1820) tend to be more commonly located within a rough semi-circle centering on the Chamberlin family plot near the main gate, stones from later decades are distributed fairly evenly throughout the cemetery.

The earliest marker dates from 1781 (row 16, #3), and simply has the initials "W. E." and the date carved into it. Seven other stones bear eighteenth-century dates (Perez Marsh [d. 1784], Row 15 #12; Abigail Walker (d. 1784), Row 15 #11; Nancy Waterman (d. 1795), Row 14 #1; Jonathan Wright (d. 1792), Row 22 #3; William Cady (d. 1790), Row 18, #4; Lydia Chamberlin (d. 1794), Row 15 #4; William Cleveland (d. 1799), Row 13 #17), while an eighth is only fragmentary (Row 18, #10). The style of carving on the last stone indicates that it may belong to the late eighteenth or very early nineteenth century. All that remains is "In Memo--- of Mrs.--- A blame---", leaving the visitor to guess whether Mrs. --- led a blameless or a blameworthy life (although suspicion strongly leans toward the former). At least one of the stones bearing an eighteenth-century date--that of Perez Marsh (d. 1784)--appears to be a later, more elaborate stone installed by Marsh's son to replace what was probably a simpler marker (Row 15, #12; see photo 6). The large white marble tablet stone that marks Perez Marsh's grave is carved with an urn, an arch supported by pilasters, and what appear to be laurel boughs.

The most elaborately carved eighteenth-century stone is that of William Cady (d. 1790) (Row 7, #4; see photo 4). Cady's marker displays a round-faced winged soul-effigy, a figure popular on gravestones during the last half of the eighteenth century, but a motif that was beginning to wane in popularity by the time of Cady's death. The other eighteenth-century stones are plain or are decorated with urns and willows carved in bas-relief, showing the newer motifs that were gaining in popularity during the late eighteenth century, as attitudes toward death were becoming less grim and more romanticized. Some are further elaborated with draperies and starbursts, like those of Rhoda Chamberlin (d. 1837; Row 13 #12;

(continued)

United States Department of the Interior
National Park ServiceNational Register of Historic Places
Continuation SheetEast Main Street Cemetery
Dalton (Berkshire Co.), Mass.Section number 7 Page 3

see photo 5) and her husband, Daniel. The headstone for Henry Marsh (d. 1824; Row 4, #3) is particularly fine, with a raised surround sheltering an urn and draperies in relief.

Other motifs include open books, sometimes surrounded by vines, like those of Naomi Beals (d. 1829; Row 2, #5; see photo 7), Polly Francis (d. 1808; Row 12 #6), and Sarah Bardin (d. 1834; Row 5 #5). Other stones display a central medallion or cartouche surrounding the name and vital information of the deceased, often surrounded by stylized rays, vines, or scrollwork, like the gravestone for Abijah Parks (d. 1813; Row 12, #4; see photo 8). Later stones are simply arched or rectangular at the top, with no carving besides the deceased's name, vital information, and an occasional epitaph. A number of small stones, which may be footstones or markers for the graves of persons with little money to spend on large monuments, are scattered among the larger markers. Some of these small stones are marked with initials, which can sometimes be correlated to nearby monuments; others have no markings or have lost their markings. Some discrepancies between the locations of head and footstones indicate that markers have been relocated, probably in the course of replacing vandalized stones.

The cemetery includes a small number of markers that were probably not contemporary with the deaths of those they commemorate, but were rather placed by family members of the deceased several years after the actual date of death, or may serve to memorialize people who were buried elsewhere. The massive memorial stones for Perez and Sarah Marsh, for example, were probably placed by their son Henry several years after his parents' deaths (see photo 6).

The cemetery contains only five monumental grave markers. Two of the largest are the similarly shaped Chamberlin monuments which flank the central entry gate (Rows 10 and 11; see photos 3 and 9). Both are in the form of heavy, squat, upward tapering pedestals with heavy cornices and capstones, and both date from the mid-nineteenth century. One commemorates John Chamberlin, Esquire, who died in 1851 at the age of 84 (Row 15, #1; see photo 9). The other memorializes Henry Chamberlin (d. 1869), his wife Mary (d. 1851), and E. H. Chamberlin (d. 1851—probably Henry and Mary's son; Row 14, #2). Another pedestal-style monument is dedicated to the Maynard family (Row 3, #1; see photo 10). Dating from around the same time as the Chamberlin monuments, the Maynard pedestal is narrower and set on a high plinth block, which in turn rests on a sandstone base. A carved medallion surrounds the Maynard family name. Smaller stones set in the ground at the base of the monument bear the initials of the Maynard family members.

A squat obelisk dedicated to the Cleveland family stands at the far end of the tenth row of gravestones (c. 1830s; Row 10, #7; see photo #12). It memorializes the second and third generations of the Cleveland family who first settled in Dalton in the 1760s.

The most ornate monument is that of James W. Bardin (1824-1855; Row 2, #1; see photo 11). A tall pedestal supports a tapering cylindrical pillar encircled by a wreath. An urn caps the whole monument. A lily worked in relief is carved into the face of the pedestal, over Bardin's name.

(continued)

United States Department of the Interior
National Park Service

National Register of Historic Places
Continuation Sheet

East Main Street Cemetery
Dalton (Berkshire Co.), Mass.

Section number 7 Page 4

Deterioration from erosion, settling of the stones, and the resetting of stones below their original level makes it difficult to locate any marks connecting the stones with their makers or quarries of origin. Two stones, however, do have visible makers' marks. Judith Waldo's headstone (Row 11, #3; see photo 14) is marked "Ely, Fec't Pittsfield." Dated 1808, the stone has a splayed tympanum enclosing a medallion and an urn in relief. Lydia Clark's (d. 1825) stone (Row 13, #3; see photo 13), which is carved with a delicate willow-and-urn motif is initialed "AT" in the lower left-hand corner. Quite a number of stones in this cemetery have carvings that appear to be from the same hand as the Clark stone.

Through most of the nineteenth century, the East Main Street Cemetery was surrounded by open land. An 1884 bird's-eye view shows the cemetery set off in a farmer's field, bounded by a rail fence and a line of trees to the east.

Burial patterns changed little while the cemetery was actively being used; families apparently remaining content to lay out their dead in simple rows. Once the cemetery stopped being used for new burials in the 1890s, the graveyard began to suffer from neglect. A 1930 town report indicates that considerable clearing of brush and overgrown grass was needed to tidy up the cemetery in time for the Massachusetts Bay Tercentenary celebrations. At the time, a new fence was installed. (Dalton Annual Town Reports, 1930) By this time the open land around the cemetery had become house lots to the east and west and had reverted to woodland to the south.

Thirty years later, the cemetery trustees replaced the 1930 fence with a privet hedge, from which a few bushes still remain today. With growing problems with vandalism, however, trustees decided to replace most of the hedge with a chain-link fence in 1985. A flagpole and updated sign were recently added as well. (See photo 1.)

Although the cemetery is now well-maintained, vandalism and weather have taken their toll on the stones. While a renovation of the cemetery was undertaken in the 1970s, at which time all the displaced stones were righted and reset (many of the sandstone bases now visible were installed during this time), the past twenty years have seen a considerable amount of new damage. Many stones have either settled into the ground or had soil heaped around them during the course of later burials, so that the lower portions of epitaphs are no longer visible. Several markers are broken; some have been repaired with metal strapping or cement, some are simply lying where they have fallen or have been propped against other stones. Many markers that have broken off at their bases have been reset simply by thrusting the broken end deeper into the ground, thus obscuring any information carved into the lower portion of the stone. Others have been reset in concrete or sandstone bases. Carvings have eroded to the point that many names, dates, and epitaphs are legible only with great difficulty.

(continued)

United States Department of the Interior
National Park ServiceNational Register of Historic Places
Continuation SheetEast Main Street Cemetery
Dalton (Berkshire Co.), Mass.Section number 7 Page 5

At least two stones have disappeared completely since an inventory conducted in 1985 by Richard C. Leab. It is possible that other stones have been removed from the cemetery before 1985. A 1940 WPA plan of the cemetery indicates that the graveyard contained at least 262 stones (it is unclear whether the 1940 plan counted foot stones and unmarked or illegible stones as well as those with legible carving).

Mahican and Mohawk Indians were known to inhabit some of the lands in what is now Dalton; however, it is not known whether there are likely to be any Native sites on the grounds of the East Main Street Cemetery. It does not appear that there was ever any European settlement activity on this site (other than possible cultivation) before its use as a burial ground. Because there is a possibility that the East Main Street Cemetery might contain a number of graves in addition to those for which markers survive, the site has considerable archeological potential for the discovery of late eighteenth and early nineteenth century resources. Exploration of the neighboring woodlot may also turn up fragments of broken or missing stones; local sources indicate that fragments of stone have occasionally been found there. Data about the cemetery's original stone wall and board fences might be retrievable by exploring the cemetery's boundaries.

Archaeological Description

While no prehistoric sites are recorded within the boundaries of the East Main Street Cemetery or in the general area, evidence of prehistoric resources may be present. Physical characteristics of the property (slope, soil drainage, distance to wetlands) indicate several locational criteria that are favorable indicators for many types of prehistoric sites. The cemetery is located on a level to moderately sloping terrace with a southern exposure facing a tributary stream of the East Branch Housatonic River located within 1000 feet south of the cemetery. Soils in the cemetery are well drained and formed in glacial till. Given the above information, known prehistoric site distributions elsewhere within the Housatonic River drainage and, levels of disturbance from approximately 255 grave excavations in the 2 acre cemetery, a moderate potential exists for locating prehistoric resources.

A high potential exists for locating historic archaeological resources in the East Main Street Cemetery. No evidence of structures have been identified within the cemetery boundary or in the surrounding area prior to the first burials in the 18th century through the 20th century. Cartographic resources including 1886 atlases show much of the land immediately surrounding the cemetery as open farmland. A birds eye view of the cemetery area from 1884 also shows the cemetery surrounded by cleared land enclosed by what appears to be a rail fence. Historic archaeological resources may, however, be present for stone walls and fences that marked the boundary of the cemetery, actual graves, grave markers and artifact distributions related to memorial services related to individual graves or the cemetery as a whole. Actual stones or related construction features may survive from a stone wall, probably built in the late 18th or early 19th century around the boundary of the cemetery. The stone wall was removed and replaced by a board fence in 1846. Post molds related to that fence (1846) and others constructed in 1892 and 1930 may also be present. The last wooden fence (1930) was replaced by a privet hedge in ca. 1960. Subsurface soil features may also exist from the hedges which were removed in 1985 for the construction of a chain link fence. Known and unmarked graves should represent the most common archaeological resource in the cemetery. Individual graves, the earliest of which date to the 18th century, may include skeletal remains in

(continued)

**United States Department of the Interior
National Park Service**

**National Register of Historic Places
Continuation Sheet**

**East Main Street Cemetery
Dalton (Berkshire Co.), Mass.**

Section number 7 Page 6

addition to clothing and other personal items interred with each individual. Funerary objects including coffin remains and artifacts associated with the initial interment(s) and later memorials may also be present with individuals or groups of graves. A grave shaft discernable in the soil stratigraphy should be present with individual and multiple interments. Further historical research combined with archaeological survey and testing can also help locate unmarked graves, grave markers and document the associations between existing gravestones and actual graves.

(end)

East Main Street Cemetery

Berkshire, MA

Name of Property

County and State

8. Statement of Significance

Applicable National Register Criteria

(Mark "x" in one or more boxes for the criteria qualifying the property for National Register listing.)

- A** Property is associated with events that have made a significant contribution to the broad patterns of our history.
- B** Property is associated with the lives of persons significant in our past.
- C** Property embodies the distinctive characteristics of a type, period, or method of construction or represents the work of a master, or possesses high artistic values, or represents a significant and distinguishable entity whose components lack individual distinction.
- D** Property has yielded, or is likely to yield, information important in prehistory or history.

Criteria Considerations

(Mark "x" in all the boxes that apply.)

Property is:

- A** owned by religious institution or used for religious purposes.
- B** removed from its original location.
- C** a birthplace or grave.
- D** a cemetery.
- E** a reconstructed building, object, or structure.
- F** a commemorative property.
- G** less than 50 years of age or achieved significance within the past 50 years.

Narrative Statement of Significance

(Explain the significance of the property on one or more continuation sheets.)

9. Major Bibliographical References

(Cite the books, articles, and other sources used in preparing this form on one or more continuation sheets.)

Previous documentation on file (NPS):

- preliminary determination of individual listing (36 CFR 67) has been requested
- previously listed in the National Register
- previously determined eligible by the National Register
- designated a National Historic Landmark
- recorded by Historic American Buildings Survey # _____
- recorded by Historic American Engineering Record # _____

Areas of Significance

(Enter categories from instructions)

ART

LANDSCAPE ARCHITECTURE

SOCIAL HISTORY

Period of Significance

1781-1895

Significant Dates

1781

Significant Person

(Complete if Criterion B is marked above)

Cultural Affiliation

Architect/Builder

"AT" (full name unknown) stonemason

Ely (last name unknown), Pittsfield stonemason

Primary location of additional data:

- State Historic Preservation Office
- Other State agency
- Federal agency
- Local government
- University
- Other

Name of repository:

Dalton Historical Commission, Cemetery Office

United States Department of the Interior
National Park ServiceNational Register of Historic Places
Continuation SheetEast Main Street Cemetery
Dalton (Berkshire Co.), Mass.Section number 8 Page 1

STATEMENT OF SIGNIFICANCE

Dalton's East Main Street Cemetery is locally significant as an example of a burial ground from Dalton's early settlement period. It meets National Register criterion A in the context of Exploration/Settlement because of its status as a remnant of Dalton's settlement period and because of its association with Dalton's pioneering families. In many instances, a monument in the East Main Street Cemetery is only surviving landscape feature associated with Dalton's founders and their families. The information which can be gathered about the daily lives and attitudes of Dalton's early residents from the monuments and their epitaphs also gives the cemetery significance in the area of Social History. Finally, its appearance as a relatively intact example of a settlement period family burial plot, unaltered by late nineteenth century changes in cemetery design satisfies Criterion C in the areas of Landscape Architecture and Art. Because the cemetery derives its significance from its role in reflecting Dalton's community history and from its connection with significant persons and families in Dalton history, it fulfills Criteria Considerations C and D. Although it has suffered some damage from vandalism, the cemetery remains remarkably intact, retaining integrity of location, design, setting, materials, workmanship, and association.

A BRIEF HISTORY OF DALTON

In the area now known as Dalton, the Housatonic River cuts a broad path running from east to west through the Berkshire Mountains, creating a fertile valley nestled in the mountains. The river's name, appropriately enough, comes from a Mahican word meaning "the river beyond the mountains." Situated in the northern central part of Berkshire County, Dalton is bordered to the west by the county seat, Pittsfield.

The area that now makes up the town of Dalton was probably first visited by European trappers and hunters around 1750. (Dalton Bicentennial, p. 7) Until that time, the earliest inhabitants of the Berkshires were members of the Mahican tribes. Mohawks also came down from northern areas of New England during the eighteenth century.

The land grant for the town was part of the settlement of a boundary dispute between the Massachusetts and New Hampshire colonies. Oliver Partridge (1712-1792), a Hatfield resident, was a Yale-educated surveyor who became a land speculator. Partridge had laid a claim to land along the Ashuelot River in New Hampshire during the dispute. When the conflict was settled in New Hampshire's favor, Massachusetts claimants to the New Hampshire lands were compensated with equivalent lands in the unapportioned sections of the Berkshires. The area awarded to Partridge in 1743 was thus known as the "Ashuelot Equivalent." Partridge had previously surveyed the land in 1739.

Partridge and a man named Andrew Stone, who held three hundred acres in the northeast corner of Dalton, held nearly all the land that later became Dalton. Partridge transferred his holdings to Edmund Dwight, who subdivided the land into eighths and conveyed parts to Waitstill Hastings, Israel Williams, Moses Graves, and back to Oliver Partridge. In 1799, the original Partridge holdings were split into eighty-eight lots of about a hundred and ten acres each. (Dalton Bicentennial, pp. 9-10)

(continued)

United States Department of the Interior
National Park ServiceNational Register of Historic Places
Continuation SheetEast Main Street Cemetery
Dalton (Berkshire Co.), Mass.Section number 8 Page 2

While there may have been early squatters, as well as hunters and trappers occupying the Dalton lands after Partridge's 1739 surveying expedition, land disputes between Connecticut and Massachusetts and the threat of Indian attacks discouraged any attempts at permanent settlements for several years. In 1755, the first officially recorded settlers arrived. They included Doctor Perez Marsh, Daniel Frost, and Nathaniel Kellogg. They were soon followed by Joseph Chamberlin and his family. Many of these early settlers came to Dalton via Connecticut. By 1770, William Cady, Josiah Lawrence, and Abijah Parks had settled in the eastern part of Dalton, and were soon followed by members of the Merriman, Boardman, Green, Gallup, and Atwood families. (Dalton Bicentennial, p. 10)

Some of the town's early proprietors and most prominent residents were Tories, including Deacon William Williams, whose father, Israel, was expelled from Hatfield because of his loyalist sympathies. Although, during the Revolution, a number of Dalton residents served in the Continental Army, local rebel sympathizers do not appear to have expelled Dalton's loyalist population. After the war was over, many of them remained, and retained their prominent positions. William Williams, for example, served in various town offices and went on to serve in the state legislature. (Smith, p. 639)

In August of 1778, Dalton's inhabitants presented their first petition for incorporation as a town. The petition wasn't granted for another six years. The town was finally incorporated on March 20, 1784, named after Tristram Dalton, Speaker of the Massachusetts House of Representatives. Tristram Dalton apparently had no connection with the town that bears his name, and doesn't seem to have ever visited it. Dalton's first town meeting was held on April 19, 1784 at Perez Marsh's tavern. (Dalton Bicentennial, p. 13)

At the time of its incorporation, Dalton encompassed about 10,500 acres. In 1795, 5,000 acres of mostly woodland were ceded from Windsor. In 1804, 2,500 acres were conveyed from Dalton to Hinsdale when the town of Hinsdale was incorporated as a separate entity from Dalton. At that time, Dalton reached its present size of nine miles long by two and a half miles wide, encompassing about 13,000 acres. (Dalton Bicentennial, p. 16)

The Housatonic River, which runs through the center of Dalton, formed the focus for settlement in the new town. The Housatonic's turbulent waters provided an ideal power source for the paper and textile mills that would spur the town's growth.

In 1799, Dalton began its transformation from an agricultural community to an industrial one, when Zenas Crane arrived from Newton to find a site for his new paper mill. The Housatonic provided the ideal location for the new factory. Crane and his descendants became dominant forces in Dalton's economy over the next two centuries. Crane's primary products were high-quality rag papers made primarily for banks. In 1844, the company developed a distinctive bank note paper using silk fibers, which was adopted by many banks for their bonds and bank notes (Dalton Bicentennial, p. 25). Zenas's sons Zenas Marshall and James Brewer Crane continued the family business; the Crane brothers owned a series of mills under various corporate names, producing paper products ranging from writing paper to men's paper shirt collars. The Cranes' greatest success came in 1879, when they developed an extremely durable type of paper that won them the contract to act as the sole contractor in making United States currency paper. (Dalton Bicentennial, p. 28)

(continued)

United States Department of the Interior
National Park ServiceNational Register of Historic Places
Continuation SheetEast Main Street Cemetery
Dalton (Berkshire Co.), Mass.Section number 8 Page 3

The paper industry became the town's dominant employer, with the Crane family mills rapidly followed by those of Joseph Chamberlin in partnership with Henry Wiswell and David Carson (established in 1809 as Carson, Chamberlin & Wiswell, later incorporated as Carson & Brown), and Byron Weston (established in 1867). Carson & Brown and Weston were two of Crane's largest rivals in paper production.

Dalton's early settlement pattern split the town into two distinct clusters of settlement--one to the west, focusing roughly a block or two east of the Main Street Cemetery, and one to the east, concentrated where North Street and Main Street come together. From the start, tensions between these two areas led to conflicts in the town. The business rivalry between the Crane and Weston factories divided Dalton's Main Street even more strongly into eastern and western factions, sometimes popularly referred to as "downstreets" and "upstreets," with employers expecting loyalty from their workers and the merchants who served them. The Weston family dominated the eastern section of Main Street, while the Cranes dominated the west, which was often referred to as "Craneville." (Dalton Bicentennial, p. 40)

Textiles, too, became an important employer. Reverend Isaiah Weston built the town's first woolen mill in 1814. Although he went out of business in 1821, Weston was rapidly succeeded by other cloth manufacturers, including W. J. Hawkins, Charles E. West, and Christopher Glennon.

By 1830, Dalton was a prosperous little community. Its 827 residents earned most of their income from farming and from the surrounding forests, which kept three paper mills, five saw mills, and a shingle mill occupied. Three horse-powered mills cut wood for sale as stove and fireplace fuel. While most of the area's native pine stands had been felled by this time, there was still plenty of hemlock for boards and timber and spruce for shingles. Hemlock bark was also in demand for tanneries, both for local use and for export to other parts of the Northeast. Many of Dalton's wood products were exported to other parts of New England, which were rapidly becoming deforested. Not only raw lumber and partly processed boards and shingles were exported, but also chair parts turned on local lathes for sale to New York markets. In 1829, Reverend Ebenezer Jennings reported that, between the income produced during the warmer months from agricultural products and the winter income produced from logging Dalton's forested hillsides, Dalton residents managed to maintain fairly steady year-round incomes.

While Dalton's forests supplied the wood, the town's Housatonic River provided the power to turn the wood into products that could be traded in markets to the east, south, and west. The Housatonic also provided power for Dalton's paper and textile factories. Three taverns, three stores, and a post office completed the town. Primary agricultural products included wheat, which was difficult to grow in other parts of Massachusetts, and Indian corn. (Dalton Bicentennial, pp. 16-17)

By the early 1840s, Dalton's two woolen mills and three paper mills were the principal employers in town, producing over \$100,000 worth of cloth and \$83,000 worth of paper per year (Dalton Bicentennial, p. 21)

The arrival of the railroad in the 1840s ensured that Dalton would not be bypassed in the transportation-induced prosperity that many New England towns shared during the mid-nineteenth century.

(continued)

United States Department of the Interior
National Park ServiceNational Register of Historic Places
Continuation SheetEast Main Street Cemetery
Dalton (Berkshire Co.), Mass.Section number 8 Page 4

The new rail lines opened up new markets for the town's paper and textile products. By 1886, the town boasted three churches (Congregational, Methodist Episcopal, and Catholic), two hotels, a printing office, five blacksmiths, four grist and sawmills, two cider mills, and a number of general and specialty stores. (Child, p. 127) By 1900, several major business blocks were providing goods and services to residents.

The growth of Dalton's industry created a demand for new workers. Like many other New England towns, Dalton began to attract Irish immigrants fleeing the famine of the 1840s. The first immigrants were principally employed as farm laborers. In 1860, over three-fifths of Dalton's male Irish residents listed their occupation as "farm laborer." Dalton's Irish residents quickly switched from agricultural to industrial labor. Ten years later, the paper and woolen mills were the principal employers of Dalton's Irish-born residents. (United States Census Records, 1850-1880)

Throughout its history, Dalton's industrialists participated actively in both local and state politics. Members of the Crane, Weston, Brown, Glennon, and Carson families served on numerous town boards and frequently gave land or money for town projects. Several members of the Weston and Crane families served in the state legislature, while Winthrop Murray Crane became Governor of Massachusetts (1900-1903) and later United States Senator (1903-1913).

Dalton's manufacturing families took a paternalistic approach to their role as Dalton's largest employers. According to local histories, the paper and textile companies provided employees with pensions and sick benefits long before the days of Social Security. Evidence of the Cranes' industrial and benevolent activities dominate the Dalton landscape. The family provided funds for parks, schools, churches, buildings, and monuments, including the W. Murray Crane Community House and the Crane Exedra on Main Street and the chapel and receiving vault in the Main Street Cemetery (1907). The Crane family also donated parcels of land for the expansion of the Main Street and Fairview Cemeteries and paid for the construction of a massive concrete wall on the southern border of the Main Street Cemetery (1911). (Dalton Annual Town Reports, 1900-1911) Members of the Weston, Brown, Carson, and Glennon families likewise used their fortunes to finance town amenities and their influence to shape town policy. Members of all five families regularly show up in lists of town committees and boards. (Through the late nineteenth and early twentieth century, these five families dominated Dalton's Cemetery Committee, with individual family members often serving for a decade or longer.)

While Dalton's Crane and Weston manufacturing firms survived the Depression, the town still struggled with employment problems through the 1930s. Like other towns across the country, Dalton became the focus for WPA projects to provide employment on public works projects. WPA projects involving Dalton included a Federal Writers Project book about Berkshire County towns (*The Berkshire Hills*), sidewalk and street construction, sewer projects, a survey of Dalton cemeteries to identify the graves of American war veterans, and improvements to Pine Grove Park. (Dalton Annual Town Reports, 1929-1940)

A decade after World War II, the Crane paper company went from becoming the dominant papermaker in town to becoming the only papermaker in town. In 1956, Crane bought out the Byron Weston Company (Dalton Bicentennial, p. 29). Crane continues to be the town's leading employer today.

(continued)

**United States Department of the Interior
National Park Service****National Register of Historic Places
Continuation Sheet****East Main Street Cemetery
Dalton (Berkshire Co.), Mass.**Section number 8 Page 5**HISTORY OF EAST MAIN STREET CEMETERY**

Dalton's East Main Cemetery is a fine example of the family or neighborhood burial ground of the late eighteenth and early nineteenth century. Laid out in irregular rows, with no attempt at landscaping, it exemplifies the burial customs that were predominant in New England before the rural cemetery movement of the 1830s transformed graveyards into park-like settings. (See photos 1 to 3.) Many of Dalton's earliest settlers and municipal officers were buried here. Because only a handful of these settlers' homes and shops have survived, the burial ground is the only surviving remnant of many early residents' lives. Its carvings and epitaphs provide insight into the difficulties Dalton's early residents coped with, and their attitudes toward the one inevitable facet of their everyday lives.

Dalton's East Main Street Cemetery dates from the town's earliest settlement. The land for the cemetery was originally owned by members of the Chamberlin family, who were among Dalton's earliest settlers. Following common practice for the time period, a section was divided off from one of the Chamberlin family's fields to accommodate the family burial plot. The earliest Chamberlin to be buried in the plot was Lydia, the first wife of Continental Army Captain John Chamberlin. Lydia died of smallpox in 1794 at the age of 56 (Row 15, #4). (There are several earlier burials in the cemetery which do not bear the Chamberlin name; these may be relatives or neighbors of the Chamberlins. It was not uncommon for a family burial plot to become a neighborhood graveyard.)

There are only nine known eighteenth-century burials in the East Main Street Cemetery, although it is possible that illegible or missing markers (which can now only be identified by fragments left behind in the ground) also mark the site of eighteenth-century graves. The cemetery has been the victim of vandalism and theft in the past; it is possible that some early markers have been removed.

It's not clear exactly when the cemetery passed from private ownership into town hands; assessors' records do not list a deed reference for the transfer, and most of the town's annual reports do not separate expenditures for the East Main Street and Main Street cemeteries. In 1805 and 1808, voters agree to fund fencing for burying grounds other than the Main Street Cemetery, but it's difficult to tell from the descriptions exactly where the burying grounds are located; it's possible that the East Main Street Cemetery may be one of those mentioned. (Dalton Town Records, Vol. I, 1 Apr 1805, 4 Apr 1808)

It is certain that the town owned the East Main Street Cemetery as of 1830. In that year, the town voted "to lease the east burying ground to Mr. Henry Marsh for a term of years on condition of his keeping the fences in good repair." (Dalton Town Records, Vol. I, p. 421) Marsh's interest in maintaining the graveyard is understandable, since his parents (pioneer settlers Perez and Sarah Marsh) were both buried there (Row 15, #12 and 13; see photo 6). At this time, a stone wall bordered the cemetery. An agreement dated May 10, 1830 between the town and abutting property owners Ephraim Clark to the west and Ruby Chamberlin to the south and east permits the town to remove stone from the Clark and Chamberlin properties in order to maintain the wall. (Dalton Town Records, Vol. I [reverse], pp. 22-23) Sixteen years later, the stone wall was dismantled and replaced with a new board fence. (Dalton Town Records, Vol. II, pp. 76-77)

(continued)

United States Department of the Interior
National Park ServiceNational Register of Historic Places
Continuation SheetEast Main Street Cemetery
Dalton (Berkshire Co.), Mass.Section number 8 Page 6

Judging on the basis of the remaining markers, use of the East Main Street Cemetery increased rapidly during its first half-century, peaking in the 1830s, when at least forty-three persons were interred there. During the 1840s, use of the burial ground decreased only slightly, then fell more rapidly during the 1850s and 1860s. In 1846, the town even considered selling part of the burial ground, perhaps anticipating that it would not get many new burials. The vote failed, however. (Dalton Town Records, Vol. II, p. 84) By the 1870s, only four new graves were dug there. This decline in the use of the East Main Street Cemetery coincided with expansion of Dalton's Main Street Cemetery to the west. Only one burial took place during the 1880s, and only two during the 1890s. In 1895, Mary Chamberlin (1818-1895) (Row 19, #2) became the last person to be buried in the East Main Street Cemetery.

The decline in use of the old graveyard paralleled changes in cemetery use and, indeed, the whole concept of the cemetery, that were taking place in the United States during the late nineteenth century. During the 1820s, city dwellers became increasingly concerned about graveyards that were filled well beyond capacity. Not only were such graveyards often located on valuable developable parcels, but there were fears of health hazards as residences crowded closer and closer together around equally crowded graveyards. At the same time, Americans became captivated by romantic ideals of picturesque landscaping that promoted a vision of designed nature that was tamed but not regimented. These two concerns came together when Mount Auburn Cemetery opened in Boston in 1831. Marked by rambling paths and picturesque vistas, this new cemetery doubled as a public park, providing a peaceful oasis from city life, where visitors could remember their loved ones and contemplate their own mortality in an idyllic setting. Situated on the outskirts of the city on a huge parcel of land, the new cemetery also solved the problem of overcrowding in the city's old graveyards. The desire for "rural cemeteries" modeled on Mount Auburn swept the country during the 1830s and 1840s.

In areas like Dalton, which were genuinely rural to begin with, the "rural cemetery" movement took a little longer to catch on. The publicly owned Main Street Cemetery, just a short distance to the west of the East Main Street Cemetery, had started out as a small churchyard burial ground, not much different in layout from the East Main Street graveyard. In the 1870s, the Main Street Cemetery was expanded and landscaped into a park-like setting, with serpentine paths and specimen plantings of trees and shrubs. Dalton residents interested in acquiring new burial plots began turning to the more picturesque Main Street Cemetery. The few late nineteenth-century burials in the East Main Street Cemetery tended to be for individuals like Mary Chamberlin, whose families had already set up burial plots there. While the larger Main Street Cemetery was being transformed into a well-groomed rural cemetery, the East Main Street Cemetery retained the slightly haphazard look of a family burial plot.

From the time of its creation, the East Main Street Cemetery was set apart from much of Dalton's activity. An 1876 atlas shows that much of the land immediately surrounding the cemetery was open farmland, with the Congregational Church and its parsonage the cemetery's nearest neighbors to the northwest. (See 1876 map.) In an 1884 bird's-eye view of the town, the cemetery is surrounded by cleared land, and appears to be bounded by a rail fence. One huge tree is shown in the southwestern corner, with a few smaller trees scattered on the site. On the eastern fence line, a row of trees appears to provide a windbreak. The bird's-eye view vividly illustrates how the cemetery was sited a fair distance away from Dalton's more populous areas. An 1893 atlas of Dalton depicts the East Main Street cemetery as the "old

(continued)

United States Department of the Interior
National Park ServiceNational Register of Historic Places
Continuation SheetEast Main Street Cemetery
Dalton (Berkshire Co.), Mass.Section number 8 Page 7

cemetery." (See 1893 map.) At that time it was still surrounded by a huge lot of open land owned by John C. Chamberlin, and adjoining property of A. E. Chamberlin.

As the number of new burials in the East Main Street Cemetery declined, voters began to consider relocating the graveyard. In 1887, a proposal was aired to petition the state legislature for permission to remove the bodies, no doubt to the Main Street Cemetery. (Dalton Town Records, Vol. III, p. 274). A similar article appeared on the 1888 town meeting agenda. Article 18 asks voters "To see if the town will authorize the Selectmen to petition the next Legislature for a right to move all the bodies now lying in the old cemetery, and dispose of the land for public use." (Dalton Annual Town Reports, 1888) A decision on the proposal was indefinitely postponed (Dalton Town Records, Vol. III, p. 299)

In 1892, East Main Street Cemetery got another new fence. The town report for that year shows that N. H. Cady was paid \$116.00 for building a new fence around the graveyard. The cemetery didn't receive individual attention again until 1900, when a town meeting article was proposed "To see if the Town will by vote appropriate money for the improvement of the East Street Cemetery." Voters, however, decided that no action should be taken, and no such appropriation was ever made (Dalton Annual Town Reports, 1892-1900; Dalton Town Records, Vol. IV, 1900).

East Main Street is sporadically mentioned in town reports over the next forty years. Most of the time, its maintenance costs are lumped together with those of Main Street Cemetery. Occasionally a separate expenditure of \$50 to \$100 is listed for care of East Main Street. The funds must not have been sufficient, however; by the late 1920s, the cemetery was overgrown with brush and grass, several headstones had been broken or knocked over, and the wooden fence was in poor condition.

In 1930 the cemetery received much-needed attention. According to the town report, "In partial observance of the Tercentenary of Massachusetts, the East Main Street Cemetery, where many of the early families of Dalton lie buried, received special attention. Thanks to the interest and generosity of Mr. Winthrop Crane, all the broken and toppling gravestones were repaired and straightened as well as being strengthened by concrete foundations. Brush was cleared from the lower section and the tall grass mowed. The small patch of woods was cleaned of brush. The old fence has been removed and a new fence will be erected as soon as the weather permits." (Dalton Annual Town Report, 1930) If the description of the work done is any indication, the East Main Street had suffered badly from neglect and vandalism.

By 1962, East Main Street's fence needed replacing again. At that time, trustees decided to plant a privet hedge instead of building a fence (Dalton Annual Town Report, 1962). Over the next several decades, town reports regularly complained of vandalism damaging East Main Street's ancient stones. In 1970, stones were straightened and repaired, and in 1977, toppled stones were reset on new sandstone bases. That year, cemetery trustees reported that all the cemetery's broken and toppled stones had been repaired and reset. (Dalton Annual Town Reports, 1970, 1977)

Vandalism continued to be a problem, however. In 1985, a chain-link fence replaced most of the privet hedge, leaving shrubs only at the corners and at the center gate. (Dalton Annual Town Report, 1985; see photo 1)

(continued)

United States Department of the Interior
National Park ServiceNational Register of Historic Places
Continuation SheetEast Main Street Cemetery
Dalton (Berkshire Co.), Mass.Section number 8 Page 8

SOME SIGNIFICANT BURIALS

A walk through the East Main Street Cemetery provides a vivid glimpse into some of the hardships facing Dalton's early residents, in a time when infant mortality was high, and the death of young people from childbirth, infection, and infectious diseases was common. In the Mooers family plot, for example (Row 4), markers show that Pamela Mooers and three of her young children (three-year-old Andrew, five-year-old Emily M., and nine-year-old Persey D.) died within three weeks of each other during September and October of 1850, vivid evidence of the way a disease like measles or scarlet fever could devastate a family.

The common eighteenth and nineteenth-century practice of naming a new child for a deceased older sibling is also evidenced in a grouping of stones telling the mournful history of Bennet and Polly Pratt's children (Row 5). After their first son, three-year-old Addison drowned in 1823, the Pratts gave their next son, born in 1825, the same first name. This child, too, died before reaching his fourth birthday. A third son, Amasa, was born around the time the second Addison died; not yet nine years old, Amasa died in 1837.

In some families, a child didn't even live long enough to be named. Ezekiel and Phebe Chamberlin lost three unnamed daughters to death between 1805 and 1814, and a son, James, died at the age of four months in 1804 (Row 14). The third daughter may very well have been the death of Phebe, for the mother passed away in May of 1814, followed barely a month later by her infant daughter. The Chamberlin gravestones show that Ezekiel's second marriage was as marred by tragedy as his first; he and his second wife, Ruby, lost an infant son in 1827.

Like Phebe Chamberlin's, a number of other markers testify to the hazards of childbirth in the nineteenth century. A visitor to the cemetery can find a number of burials like that of Phebe C. Ward and her infant daughter, for example (Row 13, #10), who died within two days of each other in 1826.

Markers also testify to the dangers of illnesses and injuries which are today readily controlled by modern medicine. Twentieth-century observers would be surprised by the inscriptions for Lydia Chamberlin, who died of smallpox in 1794 (Row 15 #4), or Nathan Warren of Tolland, Connecticut, who "died suddenly of lock-jaw" in 1819 (Row 20, #8).

A survey of carvings and epitaphs (many now barely legible) provides a reflective visitor with insight into the range of nineteenth-century attitudes toward death. Epitaphs range from the simple "Gone home" on Margaret P. Mitchell's (d. 1875) stone (Row 8, #3) to lines of flowery verse, like the epitaph for Maria Eames (d. 1848) (Row 9, #4): "Thou'rt gone precious spirit, may we meet thee again/Where's no sorrow nor sadness, nor parting, nor pain/May we meet thee in Heaven, united to raise/Our poles of thanksgiving, our tribute of praise."

A few epitaphs caution of divine judgment, as does the headstone of Josiah Butts (d. 1831; Row 24, #1), which warns: "Death binds us/Judgment will find us." Many more, however, reflect the more

(continued)

United States Department of the Interior
National Park ServiceNational Register of Historic Places
Continuation SheetEast Main Street Cemetery
Dalton (Berkshire Co.), Mass.Section number 8 Page 9

optimistic attitude toward death that was beginning to prevail in the nineteenth century. Ezekiel Chamberlin's epitaph (d. 1825; Row 14, #4), for example expresses expectations of a better life to come: "In hopes of future bliss content I lie/Though pleased to live, yet not displeased to die."

Epitaphs commemorating deceased children are particularly poignant. Thinly veiled anger over the loss of their eleven-year-old daughter Nancy (d. 1795; Row 14, #1) is evident in the epitaph chosen by Gladding and Charlotte Waterman: "Whom neither youth nor worth/Nor friends could save/From the relentless bondage of the Grave." Others speak of acceptance, as a stone for an anonymous four-year-old girl who died in 1824: "Sleep on sweet babe, and take thy rest/God call'd thee home he saw it best." Others are touchingly simple, as are the epitaphs for the sons of Festus and Polly Francis. Menander (Row 12, #7), who died in 1809 at the age of three, is commemorated with: "So fades the lovely blooming flower"; while Lysander (Row 12, #8), who died in 1813 at the age of nine, is remembered with: "Time how short/Eternity how long."

A few epitaphs pay tribute to the virtues of the deceased, as this one for Rhoda Chamberlin (d. 1837; Row 13, #12; see photo 5), wife of Daniel Chamberlin "Let earth close o'er the sacred trust/But goodness dies not in the dust." Her headstone is carved with a particularly lovely rendition of the urn and weeping willow motif, accentuated by starbursts, which is repeated in her husband's neighboring headstone. (d. 1839; Row 13, #11) Another laudatory headstone, that for Betsey Perry (d. 1838; Row 2, #15), wife of Isaac Perry, proclaims "Let her own works praise her in the gales."

A few inscriptions are mysterious, like that of Matthew Hyde Burchard, who died at the age of 18 in 1813 (Row 7, #2). His epitaph announces "Fearless and calm he met the fatal blow/And left without a sigh these scenes below," which leaves one wondering how, exactly young Matthew met his end. Or the nearly illegible epitaph for a little girl who died in 1824 (Row 9, #5) "[name illegible] daughter of [name illegible] was instantly killed February 4, 1824 in the 4th year of her age."

A gentleman with the most common name of Smith (d. 1843; Row 7, #8) has a version of the most well-known epitaph on his headstone: "Think on me as you pass by/As you are now so once was I/As I am now so you must be/Prepare for death to follow me." A similar, but more originally phrased version of the same sentiment is the inscription on Abijah Parks's grave (d. 1812, Row 12, #4; see photo 8): "Stop! Gentle reader, reflect on time/How swift it hurries us to the tomb/Come let religion in true peace be thine/And heaven will bless you thro a life to come." Parks's grave is also distinguished by a very elegant medallion motif surrounding the inscription, along with a finely carved urn. Abijah Parks was one of Dalton's more prominent citizens at the turn of the nineteenth century. One of the town's early settlers, Parks served as a captain in the Revolutionary War, and held a number of municipal offices. Parks's home is the oldest surviving house in Dalton.

While the East Main Street Cemetery provides considerable insight into the lives and attitudes of Dalton's early residents, it also provides a link with the town's settlers. Founding families represented here include Chamberlins, Cadys, Boardmans, Gallups, Merrimans, Marshes, and Lawrences.

(continued)

United States Department of the Interior
National Park ServiceNational Register of Historic Places
Continuation SheetEast Main Street Cemetery
Dalton (Berkshire Co.), Mass.Section number 8 Page 10

Chamberlins dominate the East Main Street Cemetery, with over thirty markers bearing the Chamberlin family name. There may be many more cousins and in-laws included in the cemetery as well. The Chamberlin family plot is the focus of the cemetery, with two rows of stones ranged a long a broad grassy aisle leading from the cemetery's gate (see photo 3). Stones in this plot tend to be somewhat larger than those in the rest of the cemetery, many of them standing over four feet in height. John Chamberlin, (d. 1851), is commemorated by one of the cemetery's more imposing monuments (Row 15, #1; see photo 9), one of a pair of tapering pedestal-style monuments that flank the entry to the graveyard. Chamberlin was Dalton's first postmaster, appointed in 1812. His Georgian style home at 799 Main Street (c. 1801) still stands. In 1815, Chamberlin was rated among the 50 richest men in Massachusetts. Another John Chamberlin (d. 1817; Row 15, #2) served as a captain during the American Revolution.

Perez and Sarah Marsh (1729-1784), two of Dalton's earliest settlers, are buried in East Main Street Cemetery (Row 15, #12 and 13; see photo 6). Educated at Harvard, Perez Marsh was a physician and surgeon's mate in Colonel Ephraim Williams the younger's regiment during the French and Indian War. Marsh served as a justice of the peace in Dalton in 1761, a special justice in the Court of Common Pleas in 1765, and a standing justice in 1768. Marsh's home and tavern served as the site of Dalton's town meetings for over a decade while town residents debated the siting of the meetinghouse. According to local sources, the tavern, rather than his medical practice, was Marsh's source of income; apparently he abandoned his medical training for a more lucrative line of work. Perez and Sarah had six "beautiful and accomplished" daughters, who made the tavern a busy social center, according to local histories. (Dalton Bicentennial, p. 16) After Perez's death in 1784, his widow continued to operate the tavern (no longer extant), a bold move for a woman of those times. Before the construction of Dalton's first meetinghouse in 1794, the Marsh home and tavern served as Dalton's most frequently used public meeting place. After her husband's death, Sarah Marsh played hostess to most of the town meetings during the first decade of Dalton's history. While schoolhouses and other homes were occasionally used, the Widow Marsh's house was most often listed in town reports as hosting town meetings.

William Cleveland (d. 1799; Row 13, #17) is cited in several local histories as a self-made success story. Traveling to Dalton on foot, he settled there with his wife Hannah. He walked over fifty miles to Kinderhook, New York to trade the flax he had grown and Hannah had spun, for the family's first cow. The Cleverlands, so the story goes, went on to become prosperous farmers in Dalton. (Child, p. 132)

Nine of Dalton's Revolutionary veterans are buried in the East Main Street Cemetery: Daniel Boardman (c. 1762/63-1842; Row 6, #2), Josiah Butts (d. 1846; Row 24, #1), Lieutenant William Cady (d. 1790; Row 18, #4; see photo 4), Captain John Chamberlin (d. 1817; Row 15, #2), Henry Cleveland (d. 1841; Row 13, #15), William Hale (d. 1823; Row 14, #14), Jonathan Wright (d. 1792; Row 22, #3), Walter Walker (d. 1842; Row 17, #1), and Abijah Parks (d. 1813; Row 12 #4; see photo 8). Two of the cemetery's markers commemorate veterans of the War of 1812--Cushing Mitchell (d. 1847; Row 8, #4) and Daniel Boardman (d. 1834; Row 5, #4) and one commemorates Civil War soldier George W. Maynard (d. 1863; Row 3, #1). Maynard's family monument is one of the grander in the cemetery, consisting of a tapering pedestal set on a high plinth block.

(continued)

United States Department of the Interior
National Park ServiceNational Register of Historic Places
Continuation SheetEast Main Street Cemetery
Dalton (Berkshire Co.), Mass.Section number 8 Page 11

At least one stone in this graveyard commemorates a member of Dalton's small African-American community. The twelfth stone in the first row is dedicated to Sarah B. Garner (d. 1851), the fifteen-year-old daughter of Squire and Catherine Garner, who were listed in census records as "black." No other members of Sarah's family appear to be buried here. Surnames on the stones adjacent to Sarah's are illegible, however; they may prove to be related to Sarah.

Deterioration from erosion, settling of the stones, and the resetting of stones below their original level makes it difficult to locate any marks connecting the stones with their makers or quarries of origin. Two stones do have visible makers' marks. Judith Waldo's headstone (Row 11, #3; see photo 14) is marked "Ely, Fec't Pittsfield." Dated 1808, the stone has a splayed head enclosing a medallion with an urn inside it. Lydia Clark's (d. 1825) stone (Row 13, #3; see photo 13), which is carved with a delicate willow-and-urn motif is initialed "AT" in the lower left-hand corner. Quite a number of stones in this cemetery have carvings that appear to be from the same hand.

During the 1930s, a WPA team surveyed Dalton's three cemeteries (East Main Street, Main Street, and Fairview) to identify the graves of veterans from the American Revolution, War of 1812, Civil War, Spanish-American War, and World War I. The survey map created from this project in 1940 showed at least 262 markers (although there is no indication whether footstones were included in that enumeration). Forty-five years later, Richard C. Leab followed up on the WPA work by inventorying all the legible stones remaining in the cemetery, recording names and dates as part of a project inventorying Berkshire County cemetery inscriptions. Since the WPA and Leab inventories, the cemetery has suffered deterioration due to the elements and vandalism. At least two stones have disappeared completely since the 1985 inventory. Other stones may have been removed from the cemetery before 1985. 255 stones or fragments of stones (including footstones and remnants of stones that have been removed) remain today.

Although the cemetery grounds are currently well-maintained, vandalism and weather have taken a toll on the stones. Many stones have either settled into the ground or had soil heaped around them during the course of later burials, so that the lower portions of epitaphs are no longer visible. Several markers are broken; some have been repaired with metal strapping or cement, some are simply lying where they have fallen or have been propped against other stones. Many markers that have broken off at their bases have been reset simply by thrusting the broken end deeper into the ground, thus obscuring any information carved into the lower portion of the stone (a significant amount of this damage appears to have occurred since the 1985 inventory). Carvings have eroded to the point that many names, dates, and epitaphs are legible only with great difficulty.

While town employees have worked diligently to maintain the cemetery grounds, they lack the funds to properly repair damaged stones and better protect them from further damage. Dalton's East Main Street is one of the few survivors from the period of Dalton's early settlement. Its association with Dalton's pioneering families gives it a significant role in the town's built environment.

The East Main Street Cemetery is also an important complement to Dalton's two other historic burial grounds. Dalton's three historic cemeteries (East Main Street, Main Street, and Fairview) provide tangible examples of the progression of attitudes toward death and burial during the nineteenth century.

(continued)

**United States Department of the Interior
National Park Service****National Register of Historic Places
Continuation Sheet****East Main Street Cemetery
Dalton (Berkshire Co.), Mass.**Section number 8 Page 12

From the simple burial ground at East Main Street to the picturesque landscaping of the Main Street Cemetery to the more open feeling of the late nineteenth-century Fairview Cemetery, the three burial grounds form a continuum showing how cemetery planning and design in this small industrial town reflect broader trends that were taking place in the country as a whole.

Archaeological Significance

Since patterns of prehistoric settlement in Dalton are poorly understood and few sites are recorded, any prehistoric survivals could be significant. Prehistoric sites in this area can be important by contributing to our knowledge of prehistoric settlement and subsistence in the Berkshire uplands of western Massachusetts and interior tributary streams at the headwaters of the Housatonic River drainage. Prehistoric sites in this area can also be important by further defining the extent of Native American socio/political and socio/economic relationships with Native peoples to the west in the New York area, to the south in Connecticut, or more eastern locales in Massachusetts, including the Connecticut River Valley. The East Main Street Cemetery lies within the Housatonic River drainage, which flows southerly through Connecticut. The cemetery is also close to New York which lies two towns to the west. The Hudson River drainage is present in the northern portion of Dalton. Major Native American core areas are also present along the Connecticut River to the east. Prehistoric sites in this area can help test the importance of drainage system boundaries versus geographic proximity and their influence on Native American subsistence and settlement systems.

Historic archaeological resources described above have the potential to provide detailed information on the social, cultural and economic patterns that reflect much of Dalton's community history from the 18th through 19th centuries. Archaeological resources in the cemetery can be especially important by providing information on Dalton's early settlement history in the late 18th and early 19th centuries. Many of the town's early founders were still living during this period, agriculture was still important and 19th century changes in cemetery design had yet to take hold. The East Main Street Cemetery including its monuments and graves represents an intact example of a settlement period family burial plot and the only surviving landscape feature associated with Dalton's founders and their families. Many of Dalton's earliest settlers and municipal officers are buried in the East Main Street Cemetery. Several of the cemetery's earliest stones are located in the area of the Chamberlin family plot near the main gate. Additional documentary research combined with archaeological survey and testing within and around the current boundary of the cemetery can identify the full range of graves present at the East Main Street Cemetery. Unmarked graves may exist and the current pattern of the grave stones may not, in every instance, represent their actual placement. Gravestones were frequently removed from older cemeteries then later replaced, at times in different locations. The discrepancies between some head and foot stones has also been explained by their relocation, possibly in the course of replacing vandalized stones. Gravestones were also erected as commemorative markers by descendants of individuals after their deaths. This scenario has been observed at other burying grounds in Massachusetts and has been suggested for some burials at the East Main Street Cemetery. Archaeological research can help identify these graves as well as later unmarked graves resulting from stolen, damaged, and overgrown stones. Eighteenth and nineteenth century unmarked graves may also be present representing paupers and unknown persons. Archaeological research can also

(continued)

**United States Department of the Interior
National Park Service****National Register of Historic Places
Continuation Sheet****East Main Street Cemetery
Dalton (Berkshire Co.), Mass.**Section number 8 Page 13

help test the accuracy of the existing boundaries at the cemetery. These bounds may not accurately represent the actual cemetery boundaries. Some burials, possibly those of unknown persons, paupers or other indigent persons, may have intentionally been buried outside the cemetery boundary. Local sources also indicate fragments of gravestones have been found on a neighboring woodlot. While these stones may have been removed by vandals and discarded in the woodlot, their presence might also indicate an extension in the cemetery boundary. Artifact distributions may also be present associated with funerary or memorial services for specific individuals at their time of death or individuals and groupings of individuals (possibly families) at later dates.

Much of the above information can be obtained through unobtrusive archaeological research. That is, information can be obtained by mapping artifact concentrations and the locations of features such as grave shafts and post molds without disturbing actual skeletal remains. Remote sensing research techniques might also contribute useful information. Social, cultural and economic information relating to the 18th and 19th century Dalton settlement can be obtained in this manner, however, more detailed studies can be implemented through the actual excavation of burials and their analysis. Osteological studies of individuals interred at the burial ground have the potential to offer a wealth of information relating to the overall physical appearance of the town's inhabitants, their occupations, nutrition, pathologies and cause of death. This information can also be used to determine the actual number of individuals interred at the burial ground. Osteological information can also provide detailed information about the inhabitants of the community during a period when written records are rare or non-existent. The paucity of written records is especially true for minority members of the community including Native Americans, African Americans and early Irish American immigrants. The overall context of the grave, including material culture remains can provide information on burial practices, religious beliefs, economic status, family structure and numerous other topics relating to the individual, their socio/economic group, the overall settlement and, the early Congregational society.

(end)

United States Department of the Interior
National Park ServiceNational Register of Historic Places
Continuation SheetEast Main Street Cemetery
Dalton (Berkshire Co.), Mass.Section number 9 Page 1

MAJOR BIBLIOGRAPHICAL REFERENCES

- Barnes & Farnham, Civil Engineers. *Atlas of Berkshire County, Massachusetts*. Pittsfield, Massachusetts: Barnes & Farnham, 1904.
- Beers, F. W. *County Atlas of Berkshire, Massachusetts*. New York: R. T. White & Company, 1876.
- Burleigh, L. R. *Dalton, Massachusetts*. [Bird's-eye map] Beck & Paul, Lithographers: Milwaukee, Wisconsin, 1884.
- Child, Hamilton. *Gazetteer of Berkshire County, Massachusetts, 1725-1885*. Syracuse, New York: The Journal Office, 1885.
- Cook, Rollin Hillyer, editor. *Historic Homes and Institutions and Genealogical and Personal Memoirs of Berkshire County, Massachusetts*. New York: Lewis Publishing Company, 1906.
- Couch, Franklin ("Cap"). *Down Memory Lane with "Cap" Couch: A series of columns which appeared in the Dalton News-Record, 1972 to 1977*. [n.p., n.d. Note--book is not paginated; columns are referred to by numbers.]
- Dalton Annual Town Reports, 1866-1962, 1970-1998.
- Dalton Bicentennial Committee. *A Bicentennial History of Dalton, Massachusetts: 1784-1984*. North Adams, Massachusetts: Excelsior Printing Company, 1984.
- Dalton Cemetery Office Records.
- Dalton, Massachusetts, Records of the Congregational Church (typescript).
- Dalton Town Records, 1785-1911 (manuscript volumes located at Dalton Town Clerk's Office).
- Dalton Vertical Files. Berkshire Athenaeum Local History Collection.
- Federal Writers' Project of the WPA for Massachusetts. *The Berkshire Hills*. New York: Funk & Wagnalls, 1939.
- Fischer, R. W. *The Dalton Papers: Eighteenth-Century Dalton from Original Town Manuscripts*, [n. p.] 1997.
- Goss, K. David, and Zarowin, David. *Massachusetts Officers and Soldiers in the French and Indian Wars, 1755-1756*. Boston: New England Historical and Genealogical Society, 1985.
- Leab, Richard C. "Miscellaneous Cemetery Inscriptions from Berkshire County." (Photocopy of manuscript), Jan 1985.

(continued)

United States Department of the Interior
National Park Service

National Register of Historic Places
Continuation Sheet

East Main Street Cemetery
Dalton (Berkshire Co.), Mass.

Section number 9 Page 2

Massachusetts Soldiers, Sailors and Marines in the Civil War. Norwood, Massachusetts: Norwood Press, 1932.

Mausolf, Lisa. Craneville, Dalton, Massachusetts Area Survey Form, 1996.

Mausolf, Lisa. Dalton Flat (Main Street), Dalton, Massachusetts Area Survey Form, 1996.

Mausolf, Lisa. East Main Street, Dalton, Massachusetts Area Survey Form, 1996.

McDowell, Peggy, and Meyer, Richard E. *The Revival Styles in American Memorial Art.* Bowling Green, Ohio: Bowling Green State University Popular Press, 1994.

Miller, D. L. *Atlas of the City of Pittsfield, Berkshire County, Massachusetts, Including the Village of Dalton.* New York: D. L. Miller & Company, 1893.

North, Robert G. (Draftsman). *Dalton Cemeteries Showing Veteran Graves. WPA Project #20918.* Sponsored by Berkshire County Commissioners, 30 Oct 1940.

The 150th Anniversary of the Town of Dalton, Massachusetts, 1784-1934. Pittsfield, Massachusetts: The Eagle Printing and Binding Company, 1934.

Picturesque Berkshire. Northampton, Massachusetts: Picturesque Publishing Company, 1893.

Records of the Massachusetts Volunteer Militia Called out by the Governor of Massachusetts to suppress a Threatened Invasion during the War of 1812-14. Boston: Wright and Potter Printing Company, 1913.

Sloane, David Charles. *The Last Great Necessity: Cemeteries in American History.* Baltimore: Johns Hopkins University Press, 1991.

Smith, J. E. A. "Town of Dalton." In *History of Berkshire County, Massachusetts.* New York: J. B. Beers & Co., 1885.

United States Census Records, 1850-1880.

Vital Records of Dalton, Massachusetts to the Year 1850. Boston, Massachusetts: New England Historic Genealogical Society, 1906.

(end)

East Main Street Cemetery

Berkshire, Mass.

Name of Property

County, State

10. Geographical Data

Acreage of Property 2 acres

UTM References See continuation sheet.

(Place additional UTM references on a continuation sheet)

1. 18 Zone	651900 Easting	4703820 Northing	3. 18 Zone	652020 Easting	4703720 Northing
2. 18 Zone	652030 Easting	4703830 Northing	4. 18 Zone	651880 Easting	4703720 Northing

See continuation sheet

Verbal Boundary Description

(Describe the boundaries of the property on a continuation sheet.)

Boundary Justification

(Explain why the boundaries were selected on a continuation sheet.)

11. Form Prepared By

name/title Michele Plourde-Barker, consultant with Betsy Friedberg, NR Director, MHC

organization Massachusetts Historical Commission date April 2000

street & number 220 Morrissey Boulevard telephone 617-727-8470

city or town Boston state MA zip code 02125

Additional Documentation

Submit the following items with the completed form:

Continuation Sheets

Maps

A USGS map (7.5 or 15 minute series) indicating the property's location.

A sketch map for historic districts and properties having large acreage or numerous resources.

Photographs

Representative black and white photographs of the property.

Additional items (Check with the SHPO or FPO for any additional items)

Property Owner

(Complete this item at the request of the SHPO or FPO.)

name Town of Dalton

street & number 321 Main Street telephone 413-684-1274

city or town Dalton state MA zip code 01226

Paperwork Reduction Act Statement: This information is being collected for applications to the National Register of Historic Places to nominate properties for listing or determine eligibility for listing, to list properties, and to amend existing listings. Response to this request is required to obtain a benefit in accordance with the National Historic Preservation Act, as amended (16 U.S.C. 470 et seq.).

Estimated Burden Statement: Public reporting burden for this form is estimated to average 18.1 hours per response including the time for reviewing instructions, gathering and maintaining data, and completing and reviewing the form. Direct comments regarding this burden estimate or any aspect of this form to the Chief, Administrative Services Division, National Park Service, P.O. Box 37127, Washington, DC 20013-7127; and the Office of Management and Budget, Paperwork Reductions Project (1024-0018), Washington, DC 20503.

United States Department of the Interior
National Park Service

**National Register of Historic Places
Continuation Sheet**

East Main Street Cemetery
Dalton (Berkshire Co.), Mass.

Section number 10 Page 1

VERBAL BOUNDARY DESCRIPTION

The East Main Street Cemetery contains approximately 2 acres, bounded as follows:

Beginning on East Main Street at the northwest corner of the East Main Street Cemetery and running west approximately 340 feet along the south side of East Main Street, then running south approximately 250 feet, then running west approximately 340 feet, then running north approximately 250 feet to the point of beginning.

BOUNDARY JUSTIFICATION

The boundaries of the property being nominated are identical with the property lines of the East Main Street cemetery.

(end)

United States Department of the Interior
National Park ServiceNational Register of Historic Places
Continuation SheetEast Main Street Cemetery
Dalton (Berkshire Co.), Mass.Section number ^{photos} Page

PHOTOGRAPHER: Michele Plourde-Barker

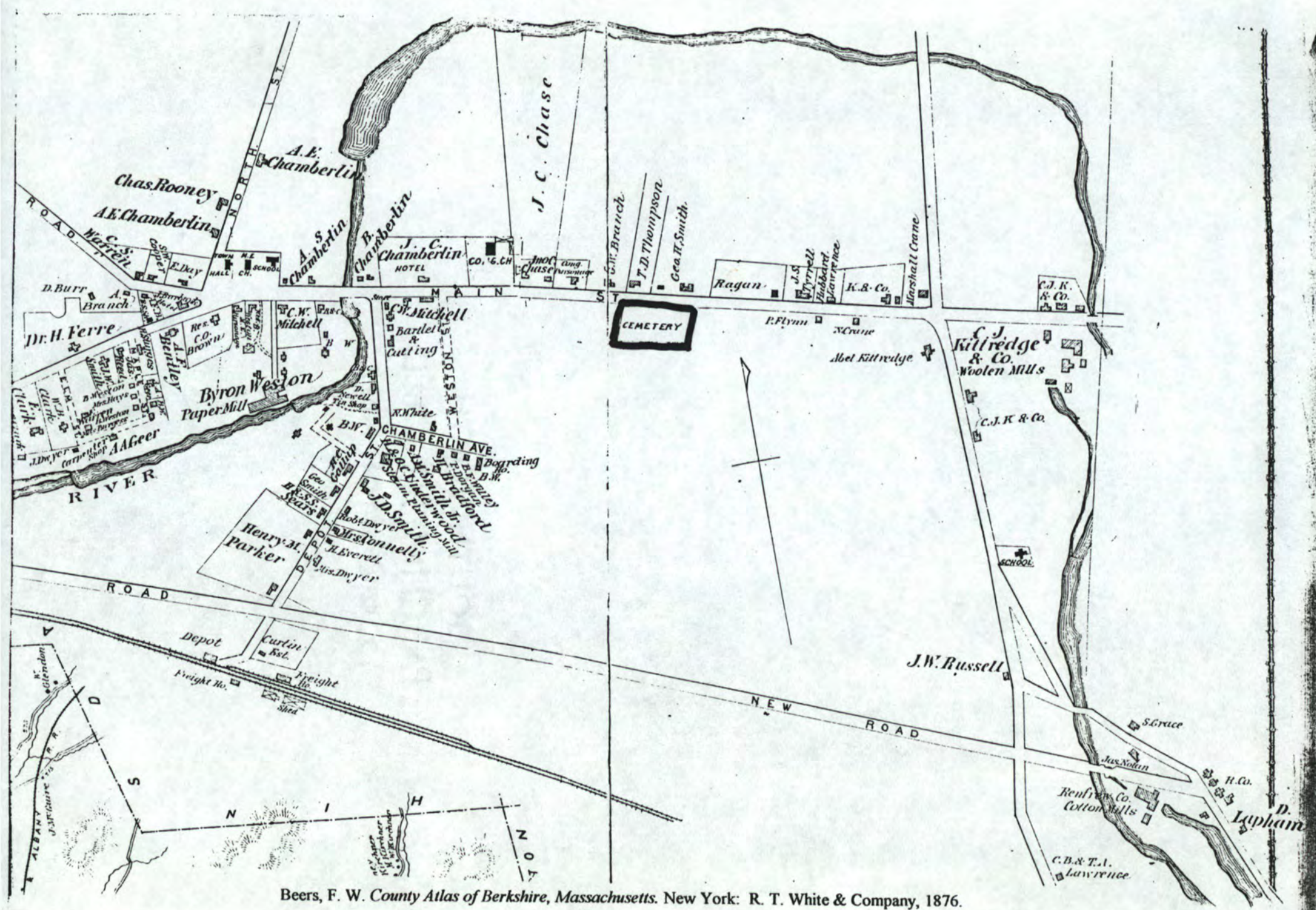
DATE: July 1999

ALL ORIGINAL NEGATIVES ARE LOCATED AT:

Dalton Historical Commission offices
321 Main Street
Dalton, MA 01226

1. East Main Street Cemetery, view from street (View facing southeast)
2. East Main Street Cemetery, showing view from Row 17 to Row 246. (View facing east)
3. East Main Street Cemetery, showing Chamberlin family plots (between Rows 14 and 15)
(View facing north)
4. East Main Street Cemetery, showing William Cady stone (d. 1790; Row 18, #4)
(View facing east)
5. East Main Street Cemetery, showing Rhoda Chamberlin stone (d. 1837; Row 13, #12)
(View facing east)
6. East Main Street Cemetery, showing Perez Marsh stone (d. 1784; Row 15, #12)
(View facing east)
7. East Main Street Cemetery, showing Naomi Beals stone (d. 1829; Row 2, #5)
(View facing east)
8. East Main Street Cemetery, showing Abijah Parks stone (d. 1812; Row 12, #4)
(View facing east)
9. East Main Street Cemetery, showing John Chamberlin monument (d. 1851; Row 15, #1)
(View facing east)
10. East Main Street Cemetery, showing Maynard family monument (Row 3, #1)
(View facing north)
11. East Main Street Cemetery, showing James W. Bardin monument (d. 1855; Row 2, #1)
(View facing northeast)
12. East Main Street Cemetery, showing Cleveland family monument (c. 1830s; Row 10, #7)
(View facing southeast)
13. East Main Street Cemetery, showing Lydia Clark stone (d. 1825; Row 13, #3); note maker's initials "AT" in lower left corner (View facing east)
14. East Main Street Cemetery, showing Judith Waldo stone (d. 1815; Row 11, #3); note maker's name, "Ely" in lower right corner (View facing east)

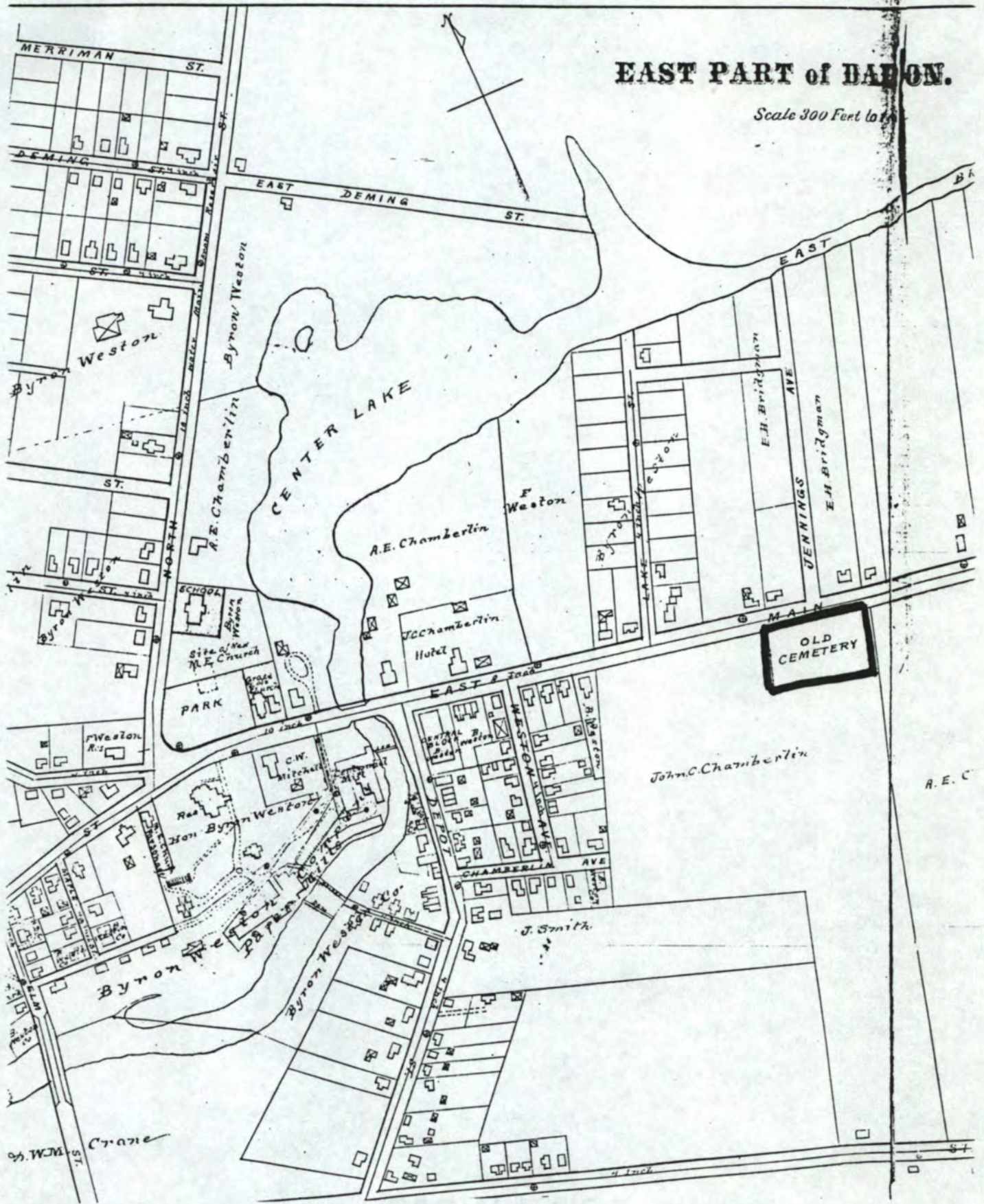
(end)



Beers, F. W. County Atlas of Berkshire, Massachusetts. New York: R. T. White & Company, 1876.

EAST PART of DALTON.

Scale 300 Feet to 1 inch

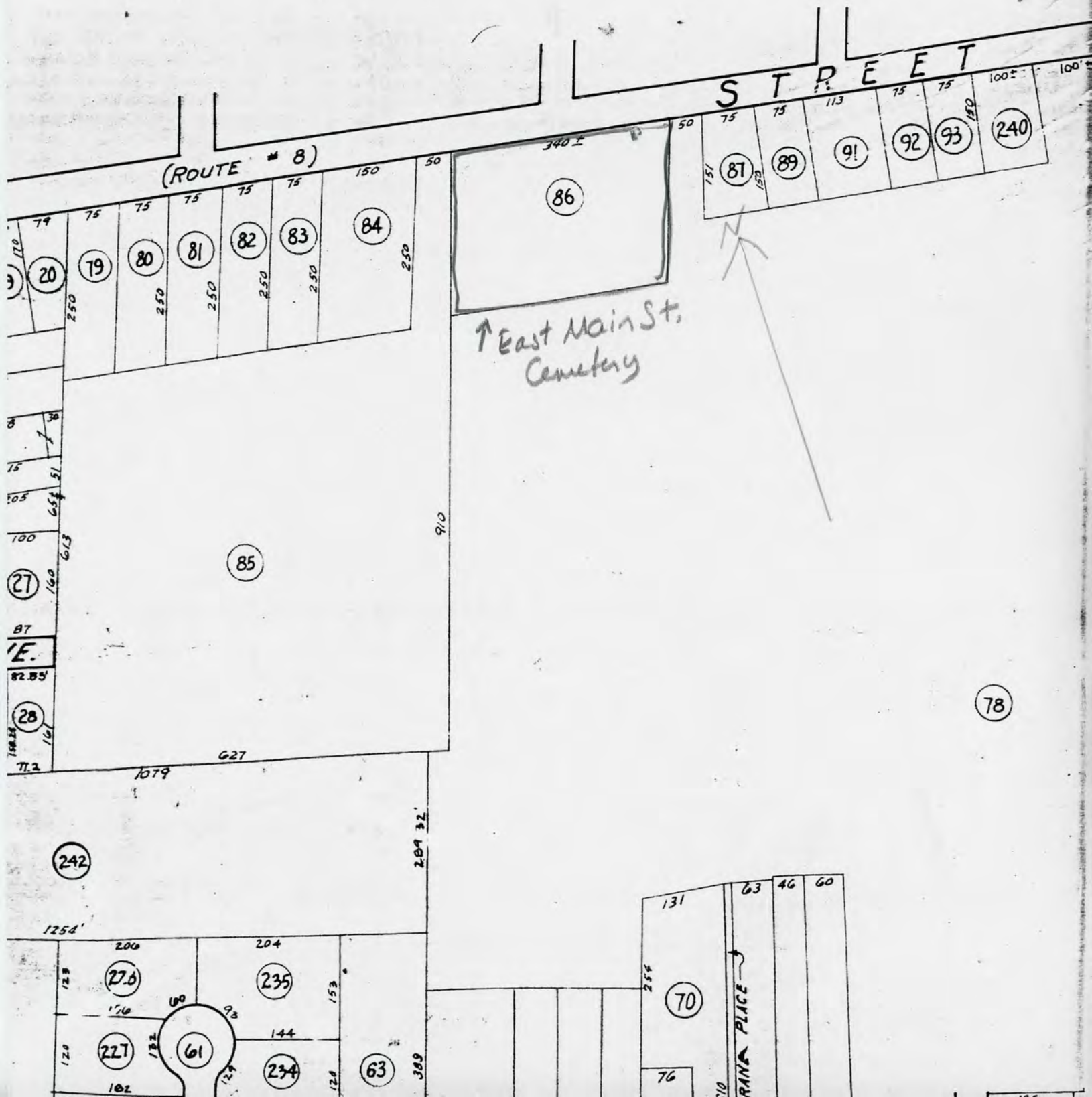


Miller, D. L. Atlas of the City of Pittsfield, Berkshire County, Massachusetts, Including the Village of Dalton. New York: D. L. Miller & Company, 1893.

DEPT

BOSTON AND

EAST MAIN ST CEMETERY
DALTON, BERKSHIRE CO., MA
ASSESSOR'S MAP # 22 - LOT # 86
SCALE - 1" = 200'



MAP # 22

UNITED STATES DEPARTMENT OF THE INTERIOR
NATIONAL PARK SERVICE

NATIONAL REGISTER OF HISTORIC PLACES
EVALUATION/RETURN SHEET

REQUESTED ACTION: NOMINATION

PROPERTY East Main Street Cemetery
NAME:

MULTIPLE
NAME:

STATE & COUNTY: MASSACHUSETTS, Berkshire

DATE RECEIVED: 5/03/00 DATE OF PENDING LIST: 5/17/00
DATE OF 16TH DAY: 6/02/00 DATE OF 45TH DAY: 6/17/00
DATE OF WEEKLY LIST:

REFERENCE NUMBER: 00000567

REASONS FOR REVIEW:

APPEAL: N DATA PROBLEM: N LANDSCAPE: N LESS THAN 50 YEARS: N
OTHER: N PDIL: N PERIOD: N PROGRAM UNAPPROVED: N
REQUEST: N SAMPLE: N SLR DRAFT: N NATIONAL: N

COMMENT WAIVER: N

ACCEPT RETURN REJECT 6.2.00 DATE

ABSTRACT/SUMMARY COMMENTS:

Entered in the
National Register

RECOM./CRITERIA _____

REVIEWER _____ DISCIPLINE _____

TELEPHONE _____ DATE _____

DOCUMENTATION see attached comments Y/N see attached SLR Y/N



THE OLD
EAST MAIN
STREET
CEMETERY

SEPT 1999 >058
7429588**NNN-2112(073)

EAST MAIN ST CEMETERY
DALTON, BERKSHIRE CO. MA
PHOTO #1



ROAD WORK
500 FT

In memory of
ISAAC WILKER
who died Nov 22
1821
in the 41 year of
his age

Mrs. LOUISE QUINCY
WILKER, nee
Mrs. J. M. Wilker
Born September 22nd 1825
Died Nov 22nd 1866
Aged 41 years

SEPT 1999 < X852
742 95** N N N-2 12 2 (073)

EAST MAIN ST CEMETERY
DALTON, BERKSHIRE CO MA
PHOTO #2



SEPT 1999 >B46
742 9544 N N N-3 17 2 (B73)

EAST MAIN ST CEMETERY
DALTON, BERKSHIRE Co. MA
PHOTO # 3



ELDRED WALKER

IN MEMORY OF
Mr. William C. ...
died June 15, 1880.
In the ... Age.
Remember

SEPT 1999 >048
74295***NNNN-3 08 2<073>

EAST MAIN ST. CEMETERY
DALTON, BERKSHIRE CO. MA
PICTO #4



In memory of Mrs

RHODA

wife of
MR DAN CHAMBERLIN

DIED

Oct 15 1837 aged 64 years
and three months

Let earth close over its sacred bed
But goodness dies not in the dust

SEPT 1999< >834
742 95** N N N-3 16 2(873)

EAST MAIN ST. CEMETERY
DALTON, BERKSHIRE CO. MA
PHOTO # 5

This Monument is erected
by Mr. Henry Marsh
In Memory of his honored
Father Perez Marsh Esq
In Tricentennial
May 20th 1876 aged 5 years

Perseus

Perseus

Perseus

Perseus

SEPT 1999< >050
742 95** N N N-2 19 2(073)

EAST MAIN ST CEMETERY
DALTON, BERKSHIRE Co. MA
PHOTO #6



In
memory of
NAOMI BEALS
wife of Jonathan Beals.
who died

Jan 16 1829

SEPT 1999< >044
742 95** N N N-1 22 2(073)

EAST MAIN ST CEMETERY
DALTON, BRACKSHIRE CO. MA
PHOTO # 7

This
Monument is
erected to the memory of
Cap. ABELIAH PARKS,
who died Aug 14 1863
in the 66 year of
his age.

*Wapt gentle reader & reflect on time
How well it hurries on to its demise
Come to religion & true peace be thine
And heaven will bless you thro' a life to
come*



SEPT 1999< >036
742 95** N N N-3 14 2(073)

EAST NOW ST CEMETERY
DALTON, BERKSHIRE Co. MA
PHOTO #8

JOHN CRAMBEGLIEM

DIED

Sept. 18, 1851.

Aged 81 yrs.

SEPT 1999< >031
742 95** N N N-3 06 2(073)

EAST MAIN ST. CEMETERY
DALTON, BERKSHIRE CO, MA
PHOTO #9

GEORGE W. MAYNARD
DIED
March 23, 1868.
Aged 31.

EMILY A.
His wife.
Died Jan. 11, 1861.
Aged 22.

SEPT 1999< >039
742 95** N N N-1 18-2(073)

EAST MAIN ST CEMETERY
DALTON, BERKSHIRE Co. MA
PHOTO # 10

SEPT 1999< >042
742 95** N N N-1 16 2(073)

EAST MAIN ST CEMETERY
DALTON, BERKSHIRE CO. MA
PHOTO # 11



REVEREND

LEWIS CLEVELAND
MAY 10 1818
DIED FEB 14 1888
AGED 69 YEARS
MARRIED
MAY 10 1818
DIED FEB 14 1888
AGED 69 YEARS

LECTIA P.
wife of
Gibson
Feb. 15-18
years



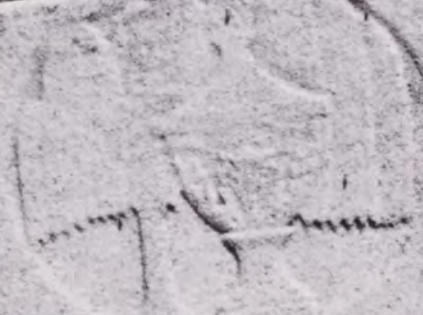
MARY
DIED FEB 14 1888
AGED 69 YEARS



SEPT 1999< >038
742 95** N N N-1 13 2(073)

EAST MAIN ST CEMETERY
DALTON, BERKSHIRE CO, MA
PHOTO # 12

ROAD
WORK
500 FT



IN MEMORY OF
MRS. LADIA WIFE OF
J. L. ...

Who died
Jan. 30, 18...

in the ...
of her ...

The sweet remembrance of the joy
which flourish while she sleeps in
dust

J. L. ...

E. C.

Gravestone with a decorative top and a central panel containing text.

Gravestone with a decorative top and a central panel containing text.

SEPT 1999< >053
742 95** N N N-2 16 2(073)

EAST MAIN ST CEMETERY
DALTON, BERKSHIRE CO. MA
PHOTO #13

DEATH
1846

[Faded inscription, possibly including a name and dates]

*Tell them though tis an awful thing to die
 'Twas given to thee, yet the dread path once trod
 Heaven life is everlasting worlds of light
 And bids thy spirit leave behind their God.*


ELY

[Faded inscription on a nearby gravestone]

SEPT 1999< . >055
742 95** N N N-2 14 2(073)


EAST MAIN ST CEMETERY
DALTON, BERKSHIRE Co MA
PHOTO # 14

Pittsfield East
MASSACHUSETTS
 1:25 000-scale metric
 topographic map



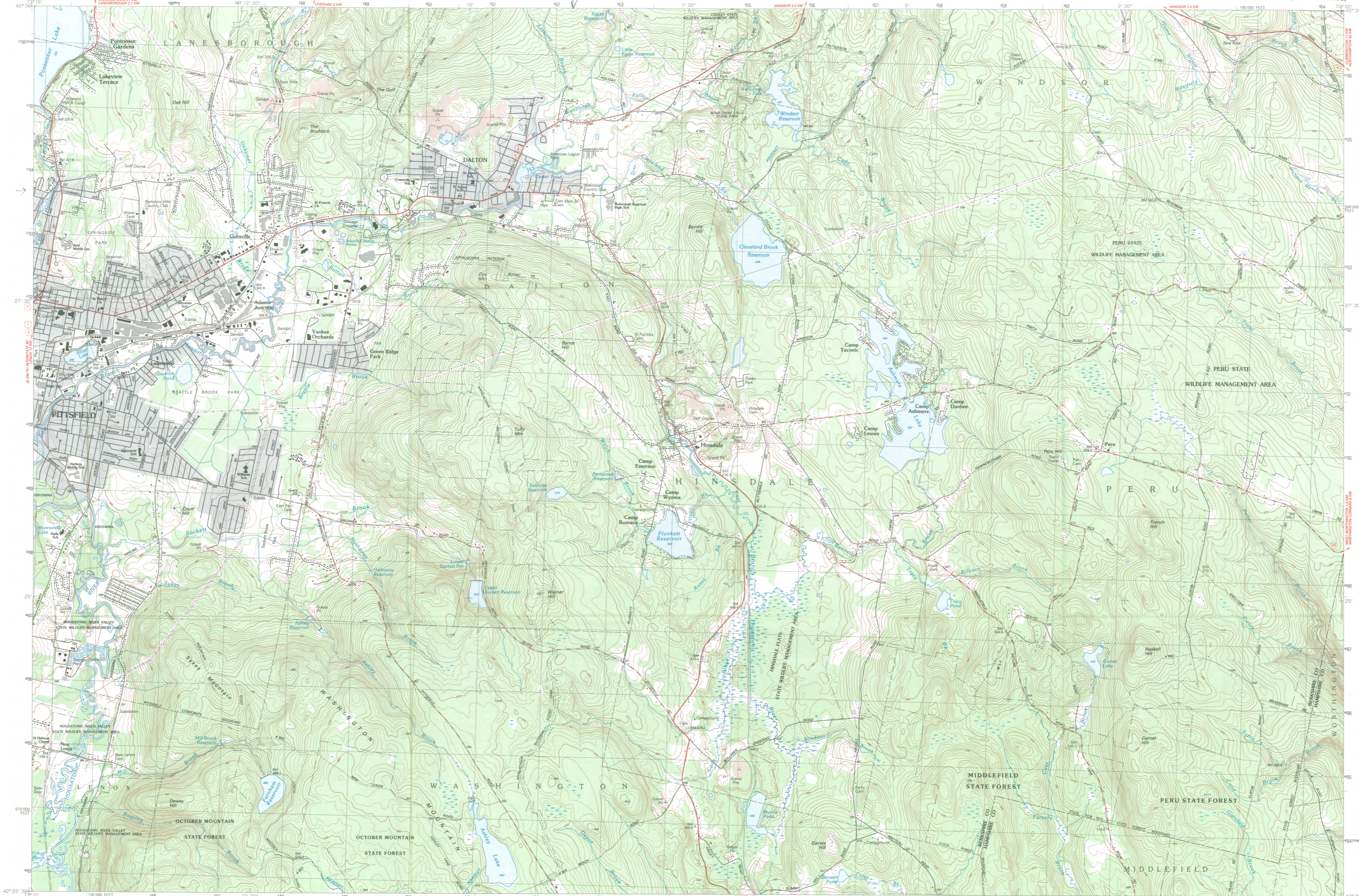
7.5 X 15 MINUTE QUADRANGLE SHOWING

- Contours and elevations in meters
- Highways, roads and other manmade structures
- Water features
- Woodland areas
- Geographic names



GEOLOGICAL SURVEY
 1988

NOTE
 1- 18 4703830
 2- 18 652030 4703830
 3- 18 652030 4703720
 4- 18 651880 4703720



Produced by the United States Geological Survey in cooperation with Massachusetts Department of Public Works
 Control by USGS, NOS/NOAA, and Commonwealth of Massachusetts agencies
 Compiled by photogrammetric methods from aerial photographs taken 1981. Field checked 1984. Map edited 1988. Supersedes Pittsfield East and Peru 1:25,000 scale maps dated 1973.
 Projection and 1000-meter grid, zone 18 Universal Transverse Mercator
 10,000-foot grid ticks based on Massachusetts coordinate system, maintained zone 1927 North American Datum
 To place on the predicted North American Datum 1983, move the projection lines 5 meters south and 37 meters west as shown by dashed corner ticks
 There may be private inholdings within the boundaries of the National or State reservations shown on this map
 Gray tint indicates areas in which only landmark buildings are shown
 Fine red dashed lines indicate fence and field lines where generally visible on aerial photographs. This information is unchecked
 CONTOUR INTERVAL 6 METERS
 NATIONAL GEODETIC VERTICAL DATUM OF 1929
 CONTROL ELEVATIONS SHOWN TO THE NEAREST 0.1 METER
 OTHER ELEVATIONS SHOWN TO THE NEAREST METER
 THIS MAP COMPLIES WITH NATIONAL MAP ACCURACY STANDARDS

Meters	Feet
1	3.2808
2	6.5617
3	9.8425
4	13.1234
5	16.4042
6	19.6850
7	22.9659
8	26.2467
9	29.5276
10	32.8084

To convert meters to feet multiply by 3.2808
 To convert feet to meters multiply by 0.3048

DECLINATION DIAGRAM	ADJOINING MAPS
	1 2 3
	4 5
	6 7 8

1 Stephensport Center
 2 Chelsea
 3 Ashfield
 4 Pittsfield West
 5 Dalton
 6 Stockbridge
 7 East Lee
 8 Chester

FOR SALE BY U.S. GEOLOGICAL SURVEY
 DENVER, COLORADO 80225, OR RESTON, VIRGINIA 22092

Topographic Map Symbols

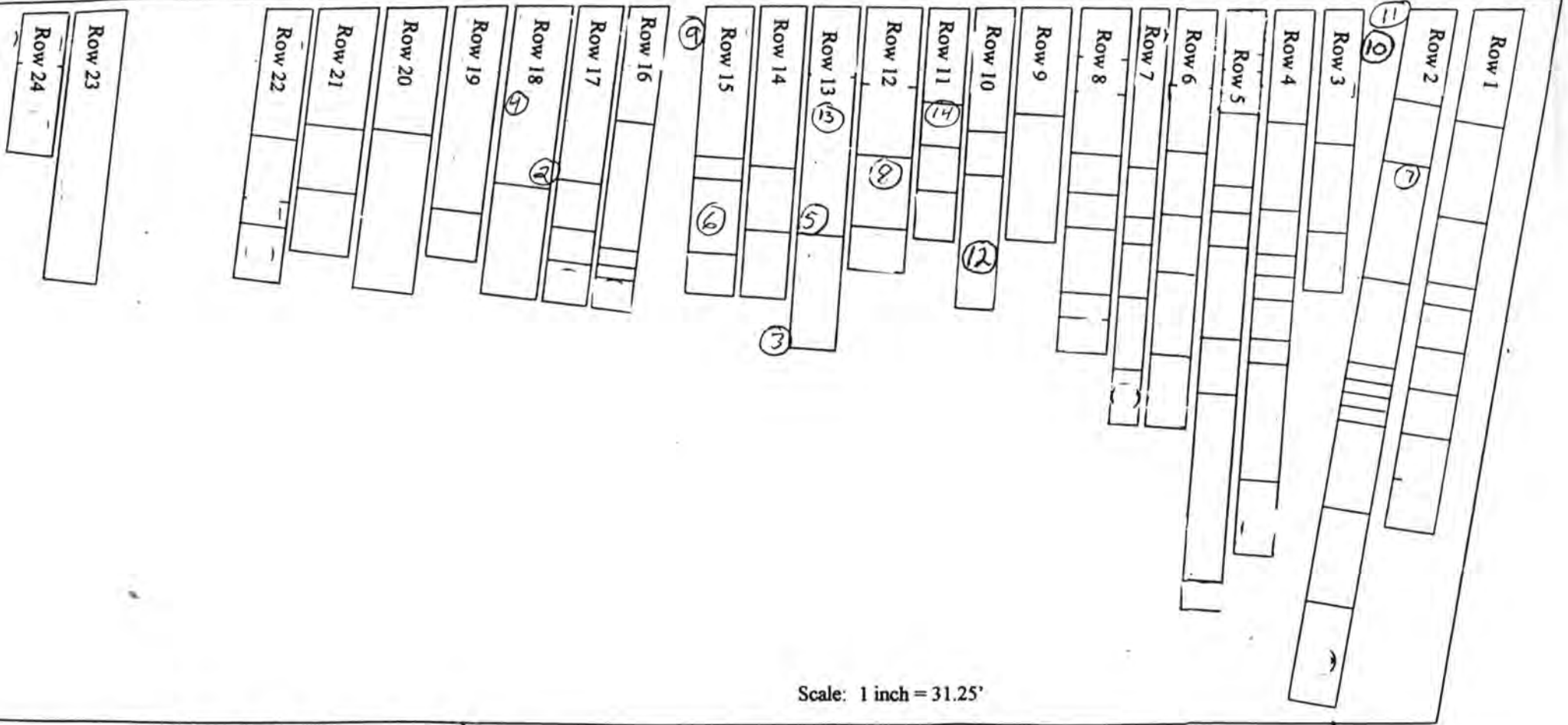
Primary highway, hard surface	
Secondary highway, hard surface	
Light-duty road, hard or improved surface	
Unimproved road, trail	
Route marker: Interstate, U. S., State	
Railroad: standard gage, narrow gage	
Bridge: drawbridge	
Footbridge, overpass, underpass	
Built-up area: only selected landmark buildings shown	
House; barn; church; school; large structure	
Boundary	
National, with monument	
State	
County, parish	
Civil township, precinct, district	
Incorporated city, village, town	
National or State reservation; small park	
Land grant with monument; found section corner	
U. S. public lands survey: range, township, section	
Range, township; section line: location approximate	
Fence or field line	
Power transmission line, located tower	
Dam; dam with lock	
Cemetery, grave	
Campground; picnic area; U. S. location monument	
Windmill; water well; spring	
Mine shaft; prospect; shaft or cave	
Control: horizontal station; vertical station; spot elevation	
Contours: index; intermediate; supplementary; depression	
Distorted surface: strip mine, levee, sand	
Bathymetric contours: index; intermediate	
Perennial lake and stream; intermittent lake and stream	
Rapids, large and small; falls, large and small	
Swamp; marsh	
Submerged marsh; land subject to controlled inundation	
Woodland: scattered trees	
Scrub; mangrove	
Orchard; vineyard	

A pamphlet describing topographic maps is available on request

EAST MAIN ST. CEMETERY
DALTON
BERKSHIRE CO., MASS.

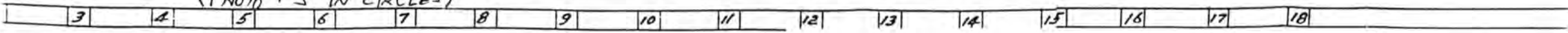
①

EAST MAIN STREET



Scale: 1 inch = 31.25'

(Plots #5 in circles)



Base map taken from:

North, Robert G. (Draftsman). *Dalton Cemeteries Showing Veteran Graves*. WPA Project #20918.
 Sponsored by Berkshire County Commissioners, 30 Oct 1940.

EAST MAIN STREET CEMETERY DALTON, BERKSHIRE COUNTY, MASSACHUSETTS



TOWN OF DALTON

Town Hall
462 Main Street
Dalton, MA 01226-1601

NR pg ✓BF
RECEIVED

AUG 26 1998

MASS. HIST. COMM

Telephone (413) 684-6111

Fax (413) 684-6107

ANIMAL CONTROL/HEALTH AGENT, Ext. 28
BOARD OF ASSESSORS, Ext. 21
BOARD OF APPEALS, Ext. 29
INSPECTION SERVICES, Ext. 27 or 29
PLANNING BOARD, Ext. 29

TOWN MANAGER, Ext. 12
TOWN ACCOUNTANT, Ext. 17
TOWN CLERK/REGISTRAR, Ext. 15
TOWN COLLECTOR, Ext. 25
SELECT BOARD, Ext. 11
OTHER BOARDS, Ext. 11

August 20, 1998

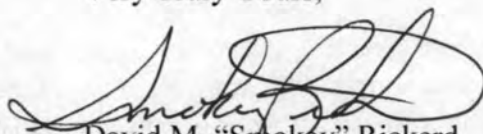
Betsy Friedberg
National Register Director
Massachusetts Historical Commission
220 Morrissey Blvd.
Boston, MA. 02125

Dear Ms. Friedberg,

This letter is in support of the Town of Dalton's Historical Commission and the nomination packages that they submitted to the State Historical Commission and to the National Register Director. The nomination packages are requesting that Dalton's three (3) cemeteries (Main Street, East Main Street and Fairview) be reviewed and accepted onto the National Historical Register. Dalton Historical Commission along with Ms. Mary Jane Caliento and Ms. Marjorie O'Keefe has dedicated themselves through hard work and time to see this request comes to fruition. The Town of Dalton is a "Proud" community which is very rich in tradition and heritage. The Cemetery Department, the Trustees and the entire community has constantly put forth a considerable amount of effort in maintaining our cemeteries at a level that demonstrates a deep respect for each family and their loved ones.

I realize, as does the Trustees and the Historical Commission that there is a heavy interest and demand towards this particular program along with other projects attempting to gain a place on the National Register. I am asking for your help and assistance in reviewing these nomination packages and I ask the Review Board to help these dedicated individuals to achieve their goal! The Town of Dalton and myself strongly support this effort 100%.

Very Truly Yours,


David M. "Smokey" Rickerd
Dalton Town Manager



The Commonwealth of Massachusetts

William Francis Galvin, Secretary of the Commonwealth
Massachusetts Historical Commission

April 28, 2000

Ms. Carol Shull
National Register of Historic Places
Department of the Interior
National Park Service
Mail Stop 2280, Suite 400
1849 C Street, NW
Washington, DC 20240

Dear Ms. Shull:

Enclosed please find the following nomination form:

East Main Street Cemetery, Dalton (Berkshire Co.) MA

The nomination has been voted eligible by the State Review Board and has been signed by the State Historic Preservation Officer. The owners of the property were notified of pending State Review Board consideration 30 to 45 days before the meeting and were afforded the opportunity to comment. Two letters of support have been received.

Sincerely,

A handwritten signature in cursive script that reads "Betsy Friedberg".

Betsy Friedberg
National Register Director
Massachusetts Historical Commission

enclosure

cc: Mary Ellen Shea, Chair, Dalton Historical Commission
Michelle Plourde-Barker, Preservation Consultant
Lawrence Gingras, Dalton Board of Selectmen
Richard Ladd, Chair, Planning Board
Congressman John Olver
"Smokey" Rickerd, Dalton Town Manager
Mary Jane Caliento
Marjorie O'Keefe

JOHN W. OLVER

1ST DISTRICT, MASSACHUSETTS

COMMITTEE:
APPROPRIATIONS

SUBCOMMITTEES:
TRANSPORTATION
MILITARY CONSTRUCTION

WHIP-AT-LARGE

Congress of the United States
House of Representatives
Washington, DC 20515-2101

PLEASE RESPOND TO:

1027 LONGWORTH HOUSE OFFICE BUILDING
WASHINGTON, DC 20515-2101
(202) 225-5335
(202) 226-1224 FAX

DISTRICT OFFICES:
490 WESTFIELD ROAD
HOLYOKE, MA 01040
(413) 532-7010
(413) 532-6543 FAX

CONTE FEDERAL BUILDING
78 CENTER STREET
PITTSFIELD, MA 01201
(413) 442-0946
(413) 443-2792 FAX

463 MAIN STREET
PITTSBURGH, MA 01420
(978) 342-8722
(978) 343-8156 FAX

JM
VBF
NR file
add to
green
sheet

September 11, 1998

Ms. Betsy Friedberg
National Register Director
Massachusetts Historical Commission
220 Morrisey Blvd.
Boston, MA 02125

RECEIVED

SEP 14 1998

MASS. HIST. COMM

Dear Ms. Friedberg,

I am writing in support of the Town of Dalton's submission of its Main Street, East Main Street, and Fairview cemeteries for inclusion on the National Register of Historic Places.

The Dalton Historical Commission is strongly committed to the preservation and maintenance of these three public sites. The two Protestant cemeteries on Main Street, one of which dates back to the American Revolution, and the Fairview Catholic cemetery, established by Dalton's community of Irish immigrants in the late nineteenth century, are historically valuable both locally and nationally.

Please add my endorsement to the Town of Dalton's applications for the three cemeteries and contact me at my Pittsfield office when the review board reaches a decision. Thank you for your time and attention to this matter.

Sincerely,

John W. Olver
John W. Olver
Member of Congress

JWO:dag