



Lava Rock Structures in South Central Idaho
Brick, Frank J., House, site 45

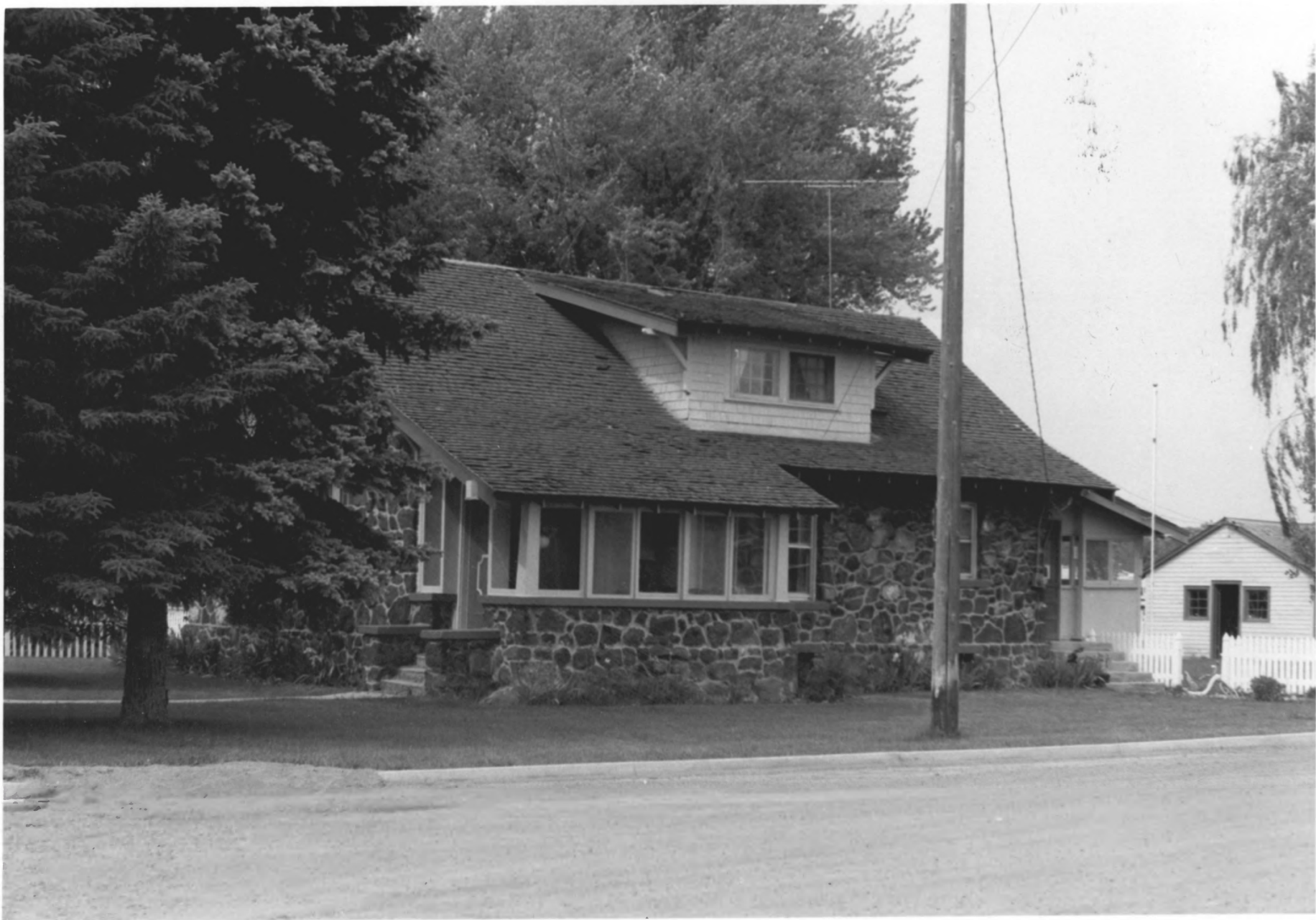
300 North Fillmore Street
Jerome, Jerome County, Idaho

Photograph by Jennifer Eastman Attebery
June 1983

Negative on file at the Idaho State Historical Society,
Boise, Idaho

View from west

Photograph one of two



Lava Rock Structures in South Central Idaho
Brick, Frank J., House, site 45

300 North Fillmore Street
Jerome, Jerome County, Idaho

Photograph by Jennifer Eastman Attebery
June 1983

Negative on file at the Idaho State Historical Society,
Boise, Idaho

View from southwest

Photograph two of two