

United States Department of the Interior
National Park Service



543

National Register of Historic Places
Registration Form

This form is for use in nominating or requesting determinations for individual properties and districts. See instructions in *How to Complete the National Register of Historic Places registration Form* (National Register Bulletin 16A). Complete each item by marking "x" in the appropriate box or by entering the information requested. If an item does not apply to the property being documented, enter "N/A" for "not applicable." For functions, architectural classification, materials, and areas of significance, enter only categories and subcategories from the instructions. Place additional entries and narrative items on continuation sheets (NPS Form 10-900a). Use a typewriter, word processor, or computer, to complete all items.

1. Name of Property

historic name John Osterman Gas Station

other names/site number N/A

2. Location

street & number 888 Highway 66

N/A not for publication

city or town Peach Springs

N/A vicinity

state Arizona

code AZ

county Mohave

code 015

zip code 86434

3. State/Federal Agency Certification

As the designated authority under the National Historic Preservation Act, as amended, I hereby certify that this nomination request for determination of eligibility meets the documentation standards for registering properties in the National Register of Historic Places and meets the procedural and professional requirements set for in 36 CFR Part 60. In my opinion, the property meets does not meet the National Register criteria. I recommend that this property be considered significant nationally statewide locally. (See continuation sheet for additional comments.)

Donna Jackson-Kelly, Tribal Historic Preservation Officer, 5/20/09
Signature of certifying official/Title Date

Hualapai Tribe of ARIZONA
State or Federal agency and bureau

In my opinion, the property meets does not meet the National Register criteria. (See Continuation sheet for additional comments.)

Signature of certifying official/Title Date

State or Federal agency and bureau

4. National Park Service Certification

- I hereby certify that the property is:
- entered in the National Register.
 See continuation sheet
 - determined eligible for the National Register.
 See continuation sheet
 - determined not eligible for the National Register
 - removed from the National Register.
 - other,
(explain:)

Signature of the Keeper

Date of Action

Spencer McClelland

3/15/12

John Osterman Gas Station
Name of Property

Mohave, Arizona
County and State

5. Classification

Ownership of Property
(Check as many boxes as apply)

Category of Property
(Check only one box)

Number of Resources within Property
(Do not include previously listed resources in count)

- private
- public-local
- public-State
- public-Federal
- building(s)
- district
- site
- structure
- object

Contributing	Noncontributing	
1	0	buildings
0	0	Sites
0	0	structures
3	0	objects
4	0	Total

Name of related multiple property listing
(Enter "N/A" if property is not part of a multiple property listing.)
Historic Route 66 in Arizona, as amended in 1996

Number of Contributing resources previously listed in the National Register
0

6. Function or Use

Historic Functions
(Enter categories from instructions)
COMMERCE/TRADE: specialty store (service station)

Current Functions
(Enter categories from instructions)
COMMERCE/TRADE: specialty store (service station)

7. Description

Architectural Classification
(Enter categories from instructions)
Other

Materials
(Enter categories from instructions)
foundation CONCRETE
walls CONCRETE
roof METAL
other WOOD

Narrative Description
(Describe the historic and current condition of the property on one or more continuation sheets.)

United States Department of the Interior
National Park Service

National Register of Historic Places Continuation Sheet

Section number 7 Page 1

John Osterman Gas Station
Peach Springs, Mohave County, Arizona

DESCRIPTION

Constructed in 1929, the John Osterman Gas Station is a one-story concrete building with a poured concrete foundation, a corrugated metal gable roof, and a rock-faced concrete block exterior. The station is located in the community of Peach Springs (pop. 600), Arizona facing the original alignment of U.S. 66. The community contains the offices of the Hualapai Tribe, the owner of the property. The building occupies a rectangular lot on the south side of the highway and is currently used as a garage. The property consists of the gas station building, two concrete gas pump islands, and a sign pole, all of which date to 1929. In front of the building is a large curb cut and a paved area of asphalt; a larger paved parking area is located to the west. The gas station is one of only a few commercial buildings constructed in Peach Springs in the early Twentieth century along U.S. 66 which remain extant. The former service station retains a high degree of integrity as to its original location, design, materials, and feeling and association.

The John Osterman Gas Station is a one-story concrete block building with a poured concrete foundation, a gable roof of corrugated metal, and an exterior of rock faced concrete block (Photo 1). The building was constructed with poured concrete vertical and horizontal piers with the rest of the walls of rock faced concrete block. The main (north) façade has an original gable roof, drive-thru bay (Photo 2). This bay retains two original, concrete gas pump islands. The north island is rectangular and approximately 11' in height. This island retains two, ca. 1980-1990 gas pumps and two steel posts which support the canopy. The south island is also rectangular and has a surface of wood planks over the pump foundations. This island is supported by original square concrete posts with chamfered corners and tapered concrete bases. The canopy has exposed eave rafters and an original roof of pressed metal shingles. In front of the island is a sign pole; the sign has been removed.

The storefront of the station has two display windows with original concrete sills and above the windows and door is a shared poured concrete lintel (Photo 3). The display windows were originally single-light design but were replaced ca. 1998 with the existing single-light design with rectangular frame and plywood panels. The main entrance has a ca. 1988 two-light glass-and-wood door. Above the door is an original single-light transom. The garage bay on the main façade has paired hinged wood doors added in 1994. Windows on the main façade are original six- and nine-light steel awning units with concrete lintels and sills (Photo 4). Some windows have security bars. The roofline of the main façade has a stepped parapet with a rectangular opening to access a storage room.

The east façade contains a garage bay with an original sliding track wood garage door (Photo 5). This door is of vertical board design with two upper window lights of three-light fixed design. This door is missing its window glass and has added plywood panels. This entrance has an original concrete ramp and a concrete lintel above. This façade also has an original nine-light steel awning window with a concrete lintel and sill. At the roofline of the façade is a stepped parapet wall. At the northeast corner of the building is a concrete pier with a round finial at the roofline. The west façade of the building has three original nine-light steel awning windows with concrete lintels and sills (Photo 1). This façade also has a stepped parapet at the

United States Department of the Interior
National Park Service

National Register of Historic Places Continuation Sheet

Section number 7 Page 2

John Osterman Gas Station
Peach Springs, Mohave County, Arizona

roofline. The rear or south façade has an entrance in the west bay with a solid steel door added in 2004 (Photo 6). This façade also displays six window bays with original nine-light steel awning windows with concrete lintels and sills.

The interior of the station office is partitioned from the rear storage and adjacent garage bay areas by original wood and plaster walls. The office walls have a plaster surface while the partition walls separating the garage and storage areas have surfaces of rock faced metal panels (Photo 7). The floor of the office is of concrete scored into a rectangular pattern. The garage section has a concrete floor and exposed walls of concrete blocks (Photo 8). The ceiling has a post and tress system with wood planks and corrugated metal at the roofline. The garage retains its original hydraulic jack floor hoist. Along the north wall of the garage section are two restrooms which are partitioned by rock faced concrete block walls. The east restroom is used for storage and no longer has a door or fixtures. The west restroom has an original five-panel wood door and ca. 1970 bathroom fixtures.

8. Statement of Significance

Applicable National Register Criteria

(Mark "x" in one or more boxes for the criteria qualifying the property for National Register listing.)

- A** Property is associated with events that have made a significant contribution to the broad patterns of our history.
- B** Property is associated with the lives of persons significant in our past.
- C** Property embodies the distinctive characteristics of a type, period, or method of construction or represents the work of a master, or possesses high artistic values, or represents a significant and distinguishable entity whose components lack individual distinction.
- D** Property has yielded, or is likely to yield, information important in prehistory or history.

Criteria Considerations N/A

(Mark "x" in all boxes that apply.)

Property is:

- A** owned by a religious institution or used for religious purposes.
- B** removed from its original location.
- C** moved from its original location.
- D** a cemetery.
- E** a reconstructed building, object, or structure.
- F** a commemorative property
- G** less than 50 years of age or achieved significance within the past 50 years.

Areas of Significance

(Enter categories from instructions)

COMMERCE

Period of Significance

1929-1959

Significant Dates

1929

Significant Person

(complete if Criterion B is marked)

N/A

Cultural Affiliation

N/A

Architect/Builder

Unknown

Narrative Statement of Significance

(Explain the significance of the property on one or more continuation sheets.)

9. Major Bibliographical References

Bibliography

(Cite the books, articles, and other sources used in preparing this form on one or more continuation sheets.)

Previous documentation on file (NPS): N/A

- preliminary determination of individual listing (36 CFR 67) has been requested
- previously listed in the National Register
- Previously determined eligible by the National Register
- designated a National Historic Landmark
- recorded by Historic American Buildings Survey # _____
- recorded by Historic American Engineering Record # _____

Primary location of additional data:

- State Historic Preservation Office
- Other State Agency
- Federal Agency – National Park Service
- Local Government
- University
- Other

Name of repository: _____

United States Department of the Interior
National Park Service

National Register of Historic Places Continuation Sheet

Section number 8 Page 3

John Osterman Gas Station
Peach Springs, Mohave County, Arizona

STATEMENT OF SIGNIFICANCE

The John Osterman Gas Station, located on U.S. 66 in Peach Springs, Arizona is eligible for the National Register under Criterion A for its historical association with U.S. 66, a primary transportation route between the Midwest and California during the early- to mid-twentieth century. The service station is significant as a representative example of the types of privately-owned commercial businesses that emerged along U.S. 66 and flourished due to the heavy use of the highway. As the automobile quickly became the preferred method of transportation, numerous auto-related businesses such as gas stations and repair shops opened along the nation's emerging roadways. As one of the most prominent east-west highways, U.S. 66 supported thousands of such businesses. The John Osterman Gas Station is one of several that operated in the small town of Peach Springs, which relied heavily on U.S. 66 traffic for its livelihood. The station is one of the few surviving auto-related businesses in Peach Springs. As such, it serves as a significant resource for interpreting and understanding the history of U.S. 66. The John Osterman Gas Station meets the registration requirements of the "Traveler Related Facilities" property type set forth in the "Historic US Route 66 in Arizona," Multiple Property Documentation Form, as amended in 1996.

CONTEXT

Peach Springs is located approximately twenty miles south of the Grand Canyon in the traditional territory of the Hualapai Tribe. Travel and transportation has played a large role in the town's history, as the rise and decline of various transportation corridors have shaped its development. During the eighteenth and nineteenth century, travelers and explorers discovered the natural springs in this area and it became a common stopping point and watering place. As railroads penetrated the West, the Atlantic and Pacific Railroad (later the Atchison, Topeka & Santa Fe) was completed through northern Arizona in 1883, and the ample water supply at Peach Springs made it a division point along the line. A small town organized along the tracks and a post office was established in 1887.¹

Peach Springs experienced a period of prosperity during the late nineteenth century. Numerous businesses appeared in the town, including a Fred Harvey Company Harvey House.² Saloons and other Peach Springs establishments also catered to the traveling public and local residents. In addition to being a prominent spot along the railroad, Peach Springs drew a number of tourists by offering easy access to the Grand Canyon via Diamond Creek. However, in 1901 the Santa Fe and Grand Canyon Railway was constructed, which provided better access to the Grand Canyon, and tourists began to bypass Peach Springs.

¹ Don W. Ryden, "Historic Resource Survey of Commercial Properties Along Historic Route 66 between Parks and Hackberry, Arizona," (prepared for the Arizona State Historic Preservation Office, Phoenix, AZ, August 1996), 35; Pat Haigh Stein, "Peach Springs Trading Post," National Register Nomination, August 2003, 8-10.

² Michael Cassity, "Route 66 Corridor National Historic Context Study," (Route 66 Corridor Preservation Program, National Park Service, National Trails Systems Office – Intermountain Region, Santa Fe, New Mexico, December 15, 2004), 79.

United States Department of the Interior
National Park Service

National Register of Historic Places Continuation Sheet

Section number 8 Page 4

John Osterman Gas Station
Peach Springs, Mohave County, Arizona

The town fell into a period of decline, which was worsened when the railroad moved its division operations to Seligman in 1907, and Peach Springs became only a minor stop on the line.³

In the years following World War I, improvements in area roads ushered in a new era of prosperity to Peach Springs. During this period the National Old Trails Road was constructed through the region. This route served as a major transportation corridor in northern Arizona as it linked several roads and trails into a single roadway.⁴ The route inspired new growth and development in Peach Springs. Through the late 1910s and the 1920s several new businesses emerged in the town including two trading posts, a hotel, and various garages and service stations.

One of those who initiated a business on U.S 66 in Peach Springs was John Osterman. Osterman was a Swedish immigrant who after first serving in the Swedish and then German Merchant Marines found himself traveling through the Southwestern United States during World War I. He found work on a dairy farm in Tempe and then on a cattle farm in Peach Springs. Osterman applied for citizenship and enlisted in the U.S. Army. After serving in World War I, Osterman returned to Peach Springs and opened a garage and service station in 1923. Later that year he married a local young woman named Dorothy Shawver.⁵

In 1926, the alignment of the National Old Trails Road in Arizona was designated as U.S. Highway 66. At this time the road was widened and improved, and traffic through the town increased steadily as automobile use rose and U.S. 66 became one of the nation's primary highways. Peach Springs became one of the busiest communities on the highway along the stretch of U.S. 66 between Kingman and Flagstaff. Much of the highway between these two communities was an oil surfaced gravel road until the late 1930s when asphalt paving was completed.

With the rise in automobile traffic, Osterman had his brother Oscar join him in Peach Springs, and the two opened a trading post in addition to their service station. Business continued to increase and in 1929, John Osterman built a new Shell service station and garage on U.S. 66 (Figure 1). Next door to the station, he constructed the Peach Springs Auto Court, which consisted of fourteen units, a bath house, and an office and the Ostermans' home.⁶ Osterman's gas station joined a number of new properties in the community including the Peach Springs Trading Post (NRHP 2003) and the Qumacho Café and Tourist Court (Figures 2 and 3). The Trading Post became well known for its Native American crafts from the nearby Hualapai Tribe and other merchandise.

+

³ Ryden, "Historic Resource Survey of Commercial Properties Along Historic Route 66 between Parks and Hackberry, Arizona," 35.

⁴ Ibid.

⁵ Ibid.; Dorothy (Shawver) Osterman, Oral History Transcript, 18 August 1980 (On file at the Hualapai Department of Cultural Resources, Peach Springs, Arizona).

⁶ Ryden, "Historic Resource Survey of Commercial Properties Along Historic Route 66 between Parks and Hackberry, Arizona," 35

United States Department of the Interior
National Park Service

National Register of Historic Places Continuation Sheet

Section number 8 Page 5

John Osterman Gas Station
Peach Springs, Mohave County, Arizona

The building constructed by Osterman was a vernacular design of poured concrete and rock-faced concrete block. The station has few allusions to any popular style of the period and was built in the tradition of the "House with Bays" form. This gas station form featured an office which was designed to resemble a small house and then had a series of attached garage bays.⁷ The John Osterman Gas Station is a variation on this form with a much larger garage bay than the office section. The size of the garage is indicative of the large amount of repair work the station undertook in addition to the sale of gasoline and other automotive products.

The development of such businesses as the John Osterman Gas Station was a common occurrence along U.S. 66 in the early twentieth century. Throughout the road's length, small, privately-owned businesses were opened to cater to the many travelers and tourists. These were often operated by a married couple that started out with one business, such as a restaurant or gas station, and expanded into other areas, such as motels or tourist courts, that also benefited from the tourist dollars. Gas stations were especially prevalent along U.S. 66 as a necessary requirement of automobile travel. Automobile use rose rapidly in the 1920s and 1930s leading to a boom in gas station construction. As author John Margolies noted, "The overbuilding of gas stations in the 1920s was exceeded only by the building boom of the 1930s. There were 143,000 retail outlets for gas in 1929, 170,000 by 1933, and this number ballooned to a staggering 231,000 in 1940."⁸ Gasoline consumption rocketed as well. In 1909, gasoline consumption accounted for 25% of the petroleum market. A short ten years later, it was 85%.⁹

John Osterman and his family operated both the gas station and the adjacent tourist court into the late 1930s. The section of U.S. 66 that passed through Peach Springs was paved around 1936, which further facilitated the flow of traffic. The Ostermans eventually sold their Peach Springs business and moved to Kingman where John Osterman began a car dealership. By the late 1930s the gas station in Peach Springs was operated by Earl Boyd, who continued to operate the business into the 1950s. The gas station remained affiliated with the Shell Corporation into the late Twentieth century as it passed through various owners including the Martin, Byars, and Ricardi families. In 1982, Robert Goldstein purchased the station. Goldstein and his family had moved to Kingman, Arizona from Nebraska in 1937 when he was fourteen years old. He later moved to Peach Springs and operated a grocery store in the trading post building. Goldstein purchased the John Osterman Gas Station in Peach Springs in 1982 and continued to use it as a gas station and garage for several years. The property is now owned by the Hualapai Tribe.

Traffic along U.S. 66 through Peach Springs remained heavy until Interstate 40 was constructed. The section of I-40 between Kingman and Seligman was completed in 1979, bypassing the eighty-four-mile stretch of U.S. 66 that had connected the two towns. The change in Peach Springs businesses was abrupt as one local business owner recalled: "Before the bypass, Route 66 was 'almost like a city street, a city

⁷ John A. Jakle and Keith A. Sculle, *The Gas Station in America*, (Baltimore: The Johns Hopkins University Press, 1994), 134.

⁸ John Margolies, *Pump and Circumstance: Glory Days of the Gas Station* (Boston: Bullfinch Press, 1993), 58.

⁹ Jakle and Sculle, *The Gas Station in America*, 50.

United States Department of the Interior
National Park Service

National Register of Historic Places Continuation Sheet

Section number 8 Page 6

John Osterman Gas Station
Peach Springs, Mohave County, Arizona

boulevard.’ After Interstate 40 was completed it was ‘ghostly quiet.’”¹⁰ Businesses soon closed and the population began to decline. As a result, a number of commercial buildings in the community were razed including the Peach Springs Auto Court.

With the renewed interest in U.S. 66, tourism is increasing all along the highway, and especially on the section between Kingman and Flagstaff. This former section of U.S. 66 is one of the longest stretches of the original roadbed in the Southwest and is now a state highway with the designation as “Highway 66.” The John Osterman Gas Station remains as a reminder of the prosperity Peach Springs experienced during the early- to mid-twentieth century as an important community along U.S. 66. Although no longer in use, the building retains much of its original design and form and continues to reflect the history of transportation along the highway. By seeking National Register designation, the tribe hopes to recognize the historical significance of the service station and garage. The tribe is currently engaged in developing a preservation plan for the building with the intent of reopening the gas station as an outlet for alternative fuels.

¹⁰ Ryden, “Historic Resource Survey of Commercial Properties Along Historic Route 66 between Parks and Hackberry, Arizona,” 31.

United States Department of the Interior
National Park Service

National Register of Historic Places Continuation Sheet

Section number 9 Page 7

John Osterman Gas Station
Peach Springs, Mohave County, Arizona

BIBLIOGRAPHY

- Cassity, Michael. "Route 66 Corridor National Historic Context Study." Route 66 Corridor Preservation Program, National Trails System Office – Intermountain Region, National Park Service, Santa Fe, New Mexico, December 15, 2004.
- Jakle John A. and Keith A. Sculle. *The Gas Station in America*. Baltimore: The John Hopkins University Press, 1994.
- Malach, Roman. *Peach Springs in Mohave County*. Kingman, AZ: Private Printing, 1975.
- Margolies, John. *Pump and Circumstance: Glory Days of the Gas Station*. Boston: Bullfinch Press, 1993.
- Osterman, Dorothy (Shawver). Oral History Transcript, 18 August 1980. On file at the Hualapai Department of Cultural Resources, Peach Springs, Arizona.
- Ryden, Don W. "Historic Resource Survey of Commercial Properties Along Historic Route 66 between Parks and Hackberry, Arizona." Prepared for the Arizona State Historic Preservation Office, Phoenix, Arizona, August 1996.
- Stein, Pat Haigh. "Peach Springs Trading Post." National Register of Historic Places Nomination, on file at the Arizona State Historic Preservation Office, Phoenix, Arizona, August 2003.
- "Welcome to Historic Route 66." Souvenir Commemorative Edition of *The Mohave Daily Miner*, 17 April 1988.

John Osterman Gas Station
Name of Property

Mohave, Arizona
County and State

10. Geographical Data

Acreage of Property Less than one acre

UTM References

(place additional UTM references on a continuation sheet.)

1 12 280455 3934105
Zone Easting Northing

2 _____

3 _____
Zone Easting Northing

4 _____

See continuation sheet

Verbal Boundary Description

(Describe the boundaries of the property on a continuation sheet.)

Boundary Justification

(Explain why the boundaries were selected on a continuation sheet.)

11. Form Prepared By

name/title Philip Thomason/Teresa Douglass
organization Thomason and Associates date March 15, 2006
street & number 1907 21st Ave. S. telephone 615-385-4960
city or town Nashville state TN zip code 37212

Additional Documentation

submit the following items with the completed form:

Continuation Sheets

Maps

A **USGS map** (7.5 Or 15 minute series) indicating the property's location

A **Sketch map** for historic districts and properties having large acreage or numerous resources.

Photographs

Representative **black and white photographs** of the property.

Additional items

(Check with the SHPO) or FPO for any additional items

Property Owner

(Complete this item at the request of SHPO or FPO.)

name Hualapai Indian Nation c/o Loretta Jackson
street & number P.O. Box 179 telephone 928-769-2216
city or town Peach Springs state AZ zip code 86434

Paperwork Reduction Act Statement: This information is being collected for applications to the National Register of Historic Places to nominate properties for listing or determine eligibility for listing, to list properties, and to amend existing listing. Response to this request is required to obtain a benefit in accordance with the National Historic Preservation Act, as amended (16 U.S.C. 470 *et seq.*)

Estimated Burden Statement: Public reporting burden for this form is estimated to average 18.1 hours per response including time for reviewing instructions, gathering and maintaining data, and completing and reviewing the form. Direct comments regarding this burden estimate or any aspect of this form to the Chief, Administrative Services Division, National Park Service, P. O. Box 37127, Washington, DC 20013-7127; and the Office of Management and Budget, Paperwork Reductions Projects (1024-0018), Washington, DC 20303.

United States Department of the Interior
National Park Service

National Register of Historic Places Continuation Sheet

Section number 10 Page 8

John Osterman Gas Station
Peach Springs, Mohave County, Arizona

VERBAL BOUNDARY DESCRIPTION

The boundary for the John Osterman Gas Station is shown as the dashed line on the accompanying Mohave County Tax Map. The property encompasses a lot of less than one acre at the southwest corner of State Highway 66 and Diamond Creek Road. The property is bounded on the north by State Highway 66, on the east by Diamond Creek Road, on the west by an imaginary line fifty feet to the west of the west façade of the building, and on the south by an imaginary line five feet south of the south façade of the building. All of the property in this section of Peach Springs is communally owned by the Hualapai Tribe. This lot is part of Township 25N, Range 11W, and Section 26 NE.

VERBAL BOUNDARY JUSTIFICATION

The boundary for the John Osterman Gas Station includes all property historically associated with the construction and operations of this business. The boundary is drawn to include the gas station and an adjacent parking area to the west of the building. The boundary also includes a gravel driveway which leads to a garage entrance on the east side of the building. No other buildings or structures associated with the gas station and its operations are extant.

United States Department of the Interior
National Park Service

National Register of Historic Places Continuation Sheet

Section number Photos Page 9

John Osterman Gas Station
Peach Springs, Mohave County, Arizona

PHOTOGRAPHS

John Osterman Gas Station

Peach Springs, Mojave County, Arizona

Photo by: Thomason and Associates

Date: January 11, 2006

Location of Negatives: National Park Service, Santa Fe, New Mexico

- Photo 1 of 8: North and west elevations, view to the southeast.
- Photo 2 of 8: Original canopy on the main (north) elevation, view to the east.
- Photo 3 of 8: Detail of storefront and office entrance on the north elevation.
- Photo 4 of 8: North and east elevations, view to the southwest.
- Photo 5 of 8: East elevation, view to the west.
- Photo 6 of 8: South elevation, view to the northeast.
- Photo 7 of 8: View of office interior.
- Photo 8 of 8: View of garage interior.

United States Department of the Interior
National Park Service

National Register of Historic Places Continuation Sheet

Section number Figures Page 10

John Osterman Gas Station
Peach Springs, Mohave County, Arizona



Figure 1: John Osterman Gas Station and U.S. 66, ca. 1945. This view is towards the east from just to the west of the gas station. In the distance on the same side of the road is the Qumacho Café and Motel which has been razed. (Courtesy of Joe Sonderman Collection).

United States Department of the Interior
National Park Service

National Register of Historic Places Continuation Sheet

Section number Figures Page 11

John Osterman Gas Station
Peach Springs, Mohave County, Arizona

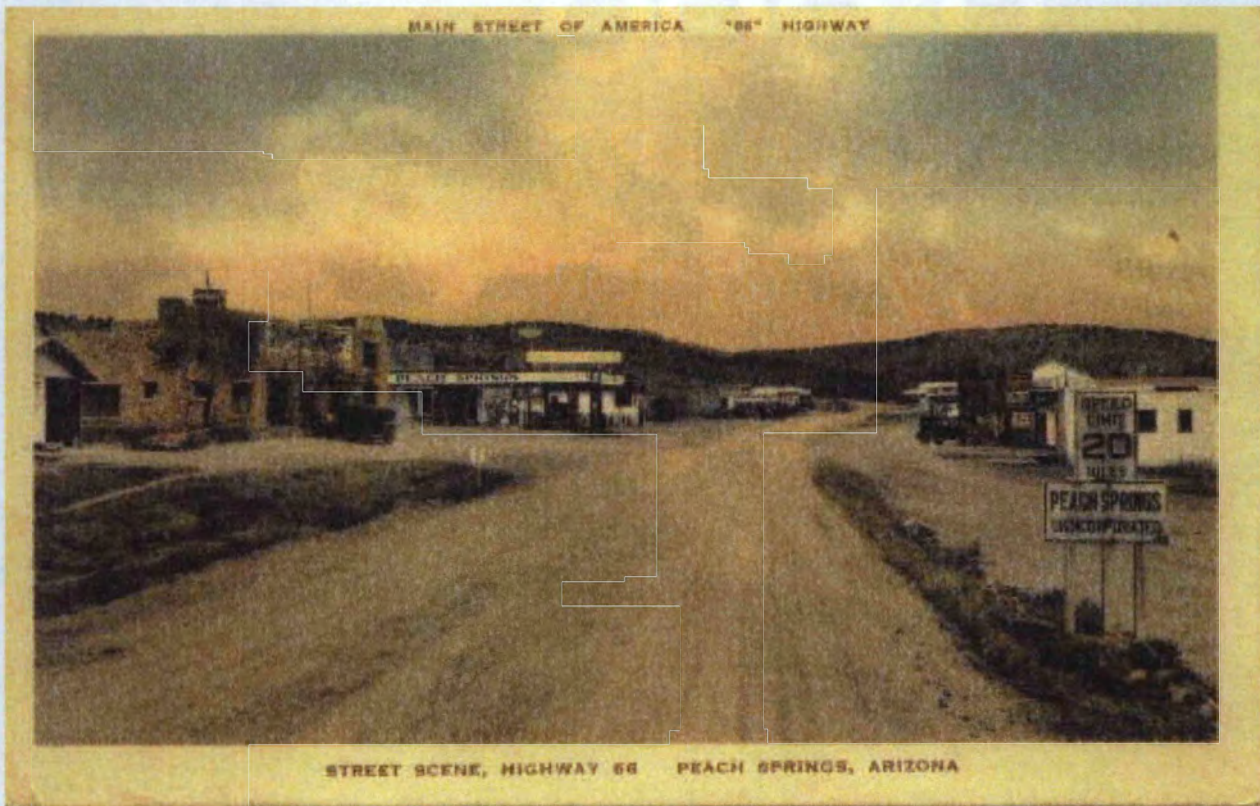


Figure 2: View of Peach Springs and U.S. 66 looking east just west of the Trading Post. The John Osterman Gas Station is not visible in this view. Note the gravel roadbed of the highway. (Courtesy of Joe Sonderman Collection).

United States Department of the Interior
National Park Service

National Register of Historic Places Continuation Sheet

Section number Figures Page 12

John Osterman Gas Station
Peach Springs, Mohave County, Arizona



Figure 3: The Qumacho Café and Motel was one of several motels and tourist courts located in Peach Springs. This complex is no longer extant. (Courtesy of Joe Sonderman Collection).

United States Department of the Interior
National Park Service

National Register of Historic Places Continuation Sheet

Section number Figures Page 13

John Osterman Gas Station
Peach Springs, Mohave County, Arizona

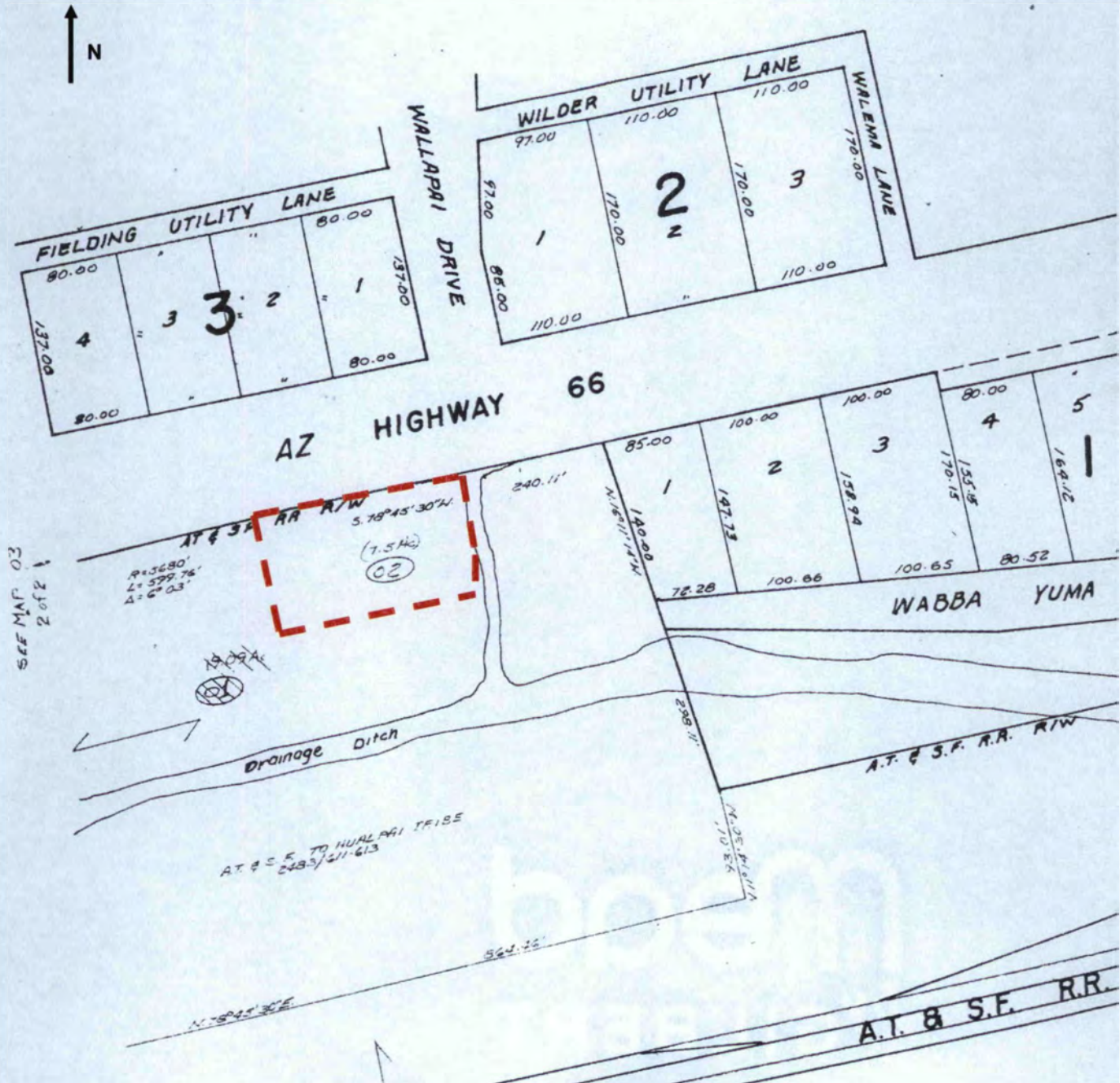


Figure 4: Parcel Map for John Osterman Gas Station.

United States Department of the Interior
National Park Service

National Register of Historic Places Continuation Sheet

Section number Figures Page 14

John Osterman Gas Station
Peach Springs, Mohave County, Arizona

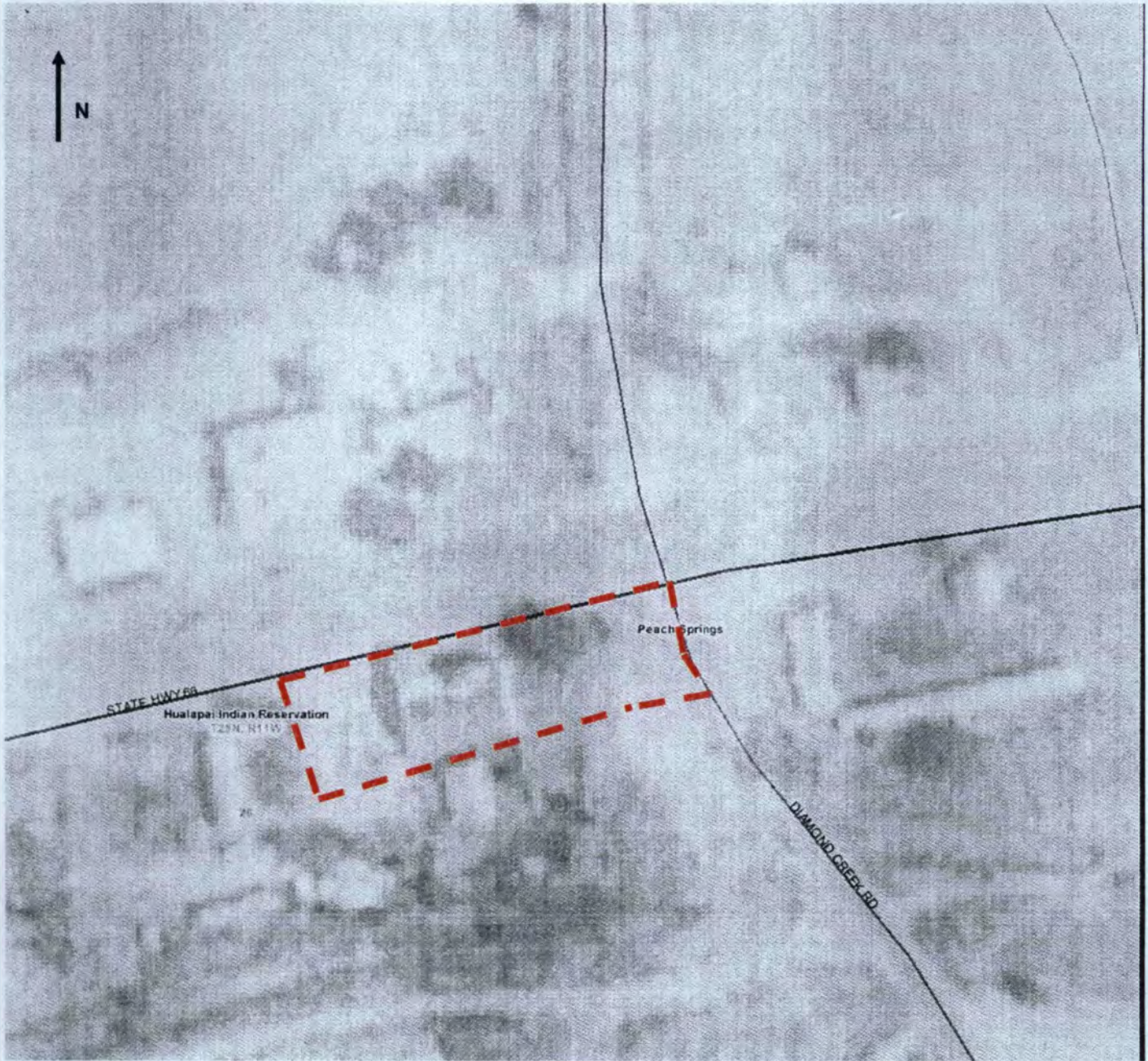


Figure 5: Aerial Parcel Map of John Osterman Gas Station.

United States Department of the Interior
National Park Service

National Register of Historic Places Continuation Sheet

Section number Figures Page 15

John Osterman Gas Station
Peach Springs, Mohave County, Arizona

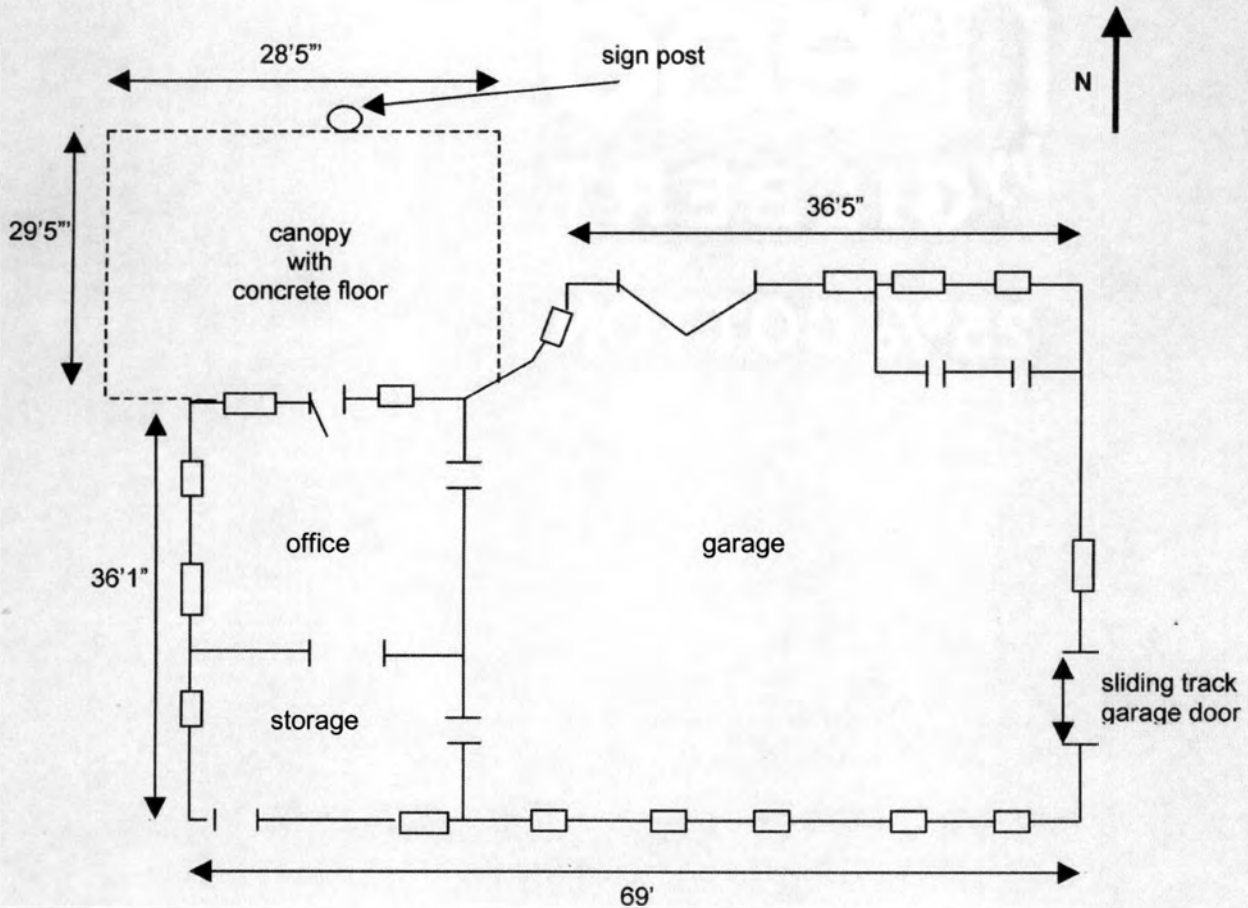


Figure 6: John Osterman Gas Station Floor Plan (not to scale).

United States Department of the Interior
National Park Service

National Register of Historic Places Continuation Sheet

Section number _____ Figures _____ Page 16

John Osterman Gas Station
Peach Springs, Mohave County, Arizona

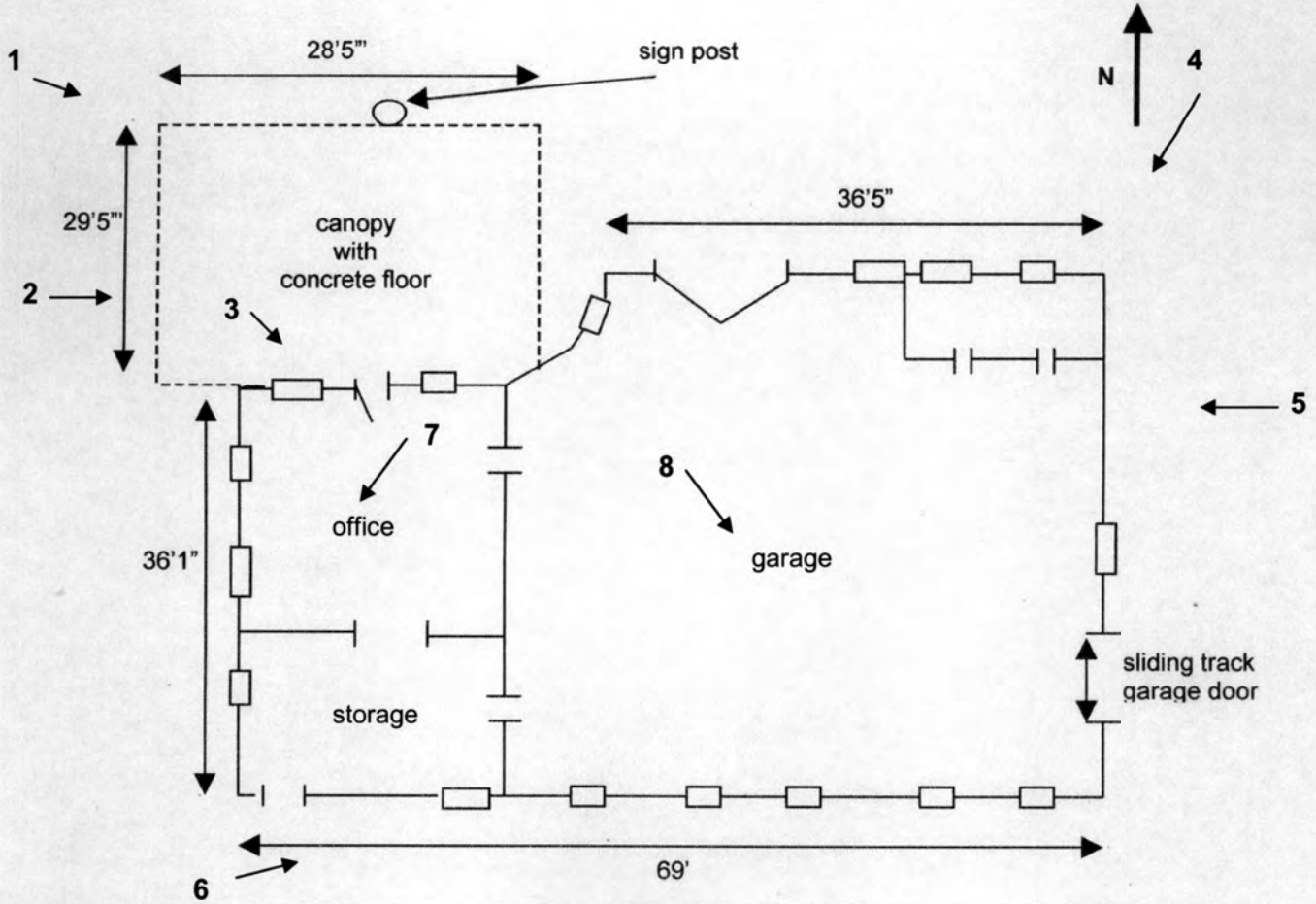


Figure 7: John Osterman Gas Station Floor Plan with Photo Key (not to scale).

United States Department of the Interior
National Park Service

National Register of Historic Places Continuation Sheet

Section number Figures Page 17

John Osterman Gas Station
Peach Springs, Mohave County, Arizona

Index of Figures

- Figure 1: John Osterman Gas Station and U.S. 66.
- Figure 2: Peach Springs and U.S. 66.
- Figure 3: Qumacho Café and Motel.
- Figure 4: Parcel Map for John Osterman Gas Station.
- Figure 5: Aerial Parcel Map of John Osterman Gas Station.
- Figure 6: John Osterman Gas Station Floor Plan.
- Figure 7: John Osterman Gas Station Floor Plan with Photo Key.

UNITED STATES DEPARTMENT OF THE INTERIOR
NATIONAL PARK SERVICE

NATIONAL REGISTER OF HISTORIC PLACES
EVALUATION/RETURN SHEET

REQUESTED ACTION: NOMINATION

PROPERTY NAME: John Osterman Gas Station

MULTIPLE NAME:

STATE & COUNTY: ARIZONA, Mohave

DATE RECEIVED: 6/05/09 DATE OF PENDING LIST: 6/22/09
DATE OF 16TH DAY: 7/07/09 DATE OF 45TH DAY: 7/19/09
DATE OF WEEKLY LIST:

REFERENCE NUMBER: 09000543

REASONS FOR REVIEW:

APPEAL: N DATA PROBLEM: N LANDSCAPE: N LESS THAN 50 YEARS: N
OTHER: Y PDIL: N PERIOD: N PROGRAM UNAPPROVED: N
REQUEST: Y SAMPLE: N SLR DRAFT: Y NATIONAL: N

COMMENT WAIVER: N

___ ACCEPT ___ RETURN ___ REJECT _____ DATE

ABSTRACT/SUMMARY COMMENTS:

*Hold for new information
map, photographs and c.d. of photos
are digital images.*

RECOM./CRITERIA *Return/Hold*
REVIEWER *L. McClelland* DISCIPLINE *History*
TELEPHONE _____ DATE *7/17/09*
DOCUMENTATION see attached comments Y N see attached SLR Y N

If a nomination is returned to the nominating authority, the nomination is no longer under consideration by the NPS.

UNITED STATES DEPARTMENT OF THE INTERIOR
NATIONAL PARK SERVICE

NATIONAL REGISTER OF HISTORIC PLACES
EVALUATION/RETURN SHEET

REQUESTED ACTION: RESUBMISSION

NAME: John Osterman Gas Station

MULTIPLE NAME: *HISTORIC Route 66 in Arizona*

STATE & COUNTY: ARIZONA, Mohave

DATE RECEIVED: 03/15/12 DATE OF PENDING LIST:
DATE OF 16TH DAY: DATE OF 45TH DAY: 04/29/12
DATE OF WEEKLY LIST:

REFERENCE NUMBER: 09000543

NOMINATOR: STATE

DETAILED EVALUATION: Y

ACCEPT RETURN REJECT DATE

ABSTRACT/SUMMARY COMMENTS:

Historic gas station in Peach Springs is significantly associated with the history of U.S. Route 66. This resource is representative of privately owned commercial businesses that served the highway and, in turn, relied on the highway traffic for its livelihood. This is one of the few surviving auto-related businesses in Peach Springs.

RECOM./CRITERIA *Accept A*

REVIEWER *L McClelland* DISCIPLINE *History*

TELEPHONE _____ DATE *3/15/12*

DOCUMENTATION see attached comments Y (N) see attached SLR Y (N)

If a nomination is returned to the nominating authority, the nomination is no longer under consideration by the National Park Service.

UNITED STATES DEPARTMENT OF THE INTERIOR
NATIONAL PARK SERVICE

NATIONAL REGISTER OF HISTORIC PLACES
EVALUATION/RETURN SHEET

REQUESTED ACTION: RESUBMISSION

PROPERTY John Osterman Gas Station
NAME:

MULTIPLE
NAME:

STATE & COUNTY: ARIZONA, Mohave

DATE RECEIVED: 3/12/12 DATE OF PENDING LIST:
DATE OF 16TH DAY: DATE OF 45TH DAY: 4/28/12
DATE OF WEEKLY LIST:

REFERENCE NUMBER: 09000543

~~DETAILED~~ EVALUATION:

ACCEPT RETURN REJECT 3.15.12 DATE

ABSTRACT/SUMMARY COMMENTS:

Entered in
The National Register
of
Historic Places

RECOM./CRITERIA _____

REVIEWER _____ DISCIPLINE _____

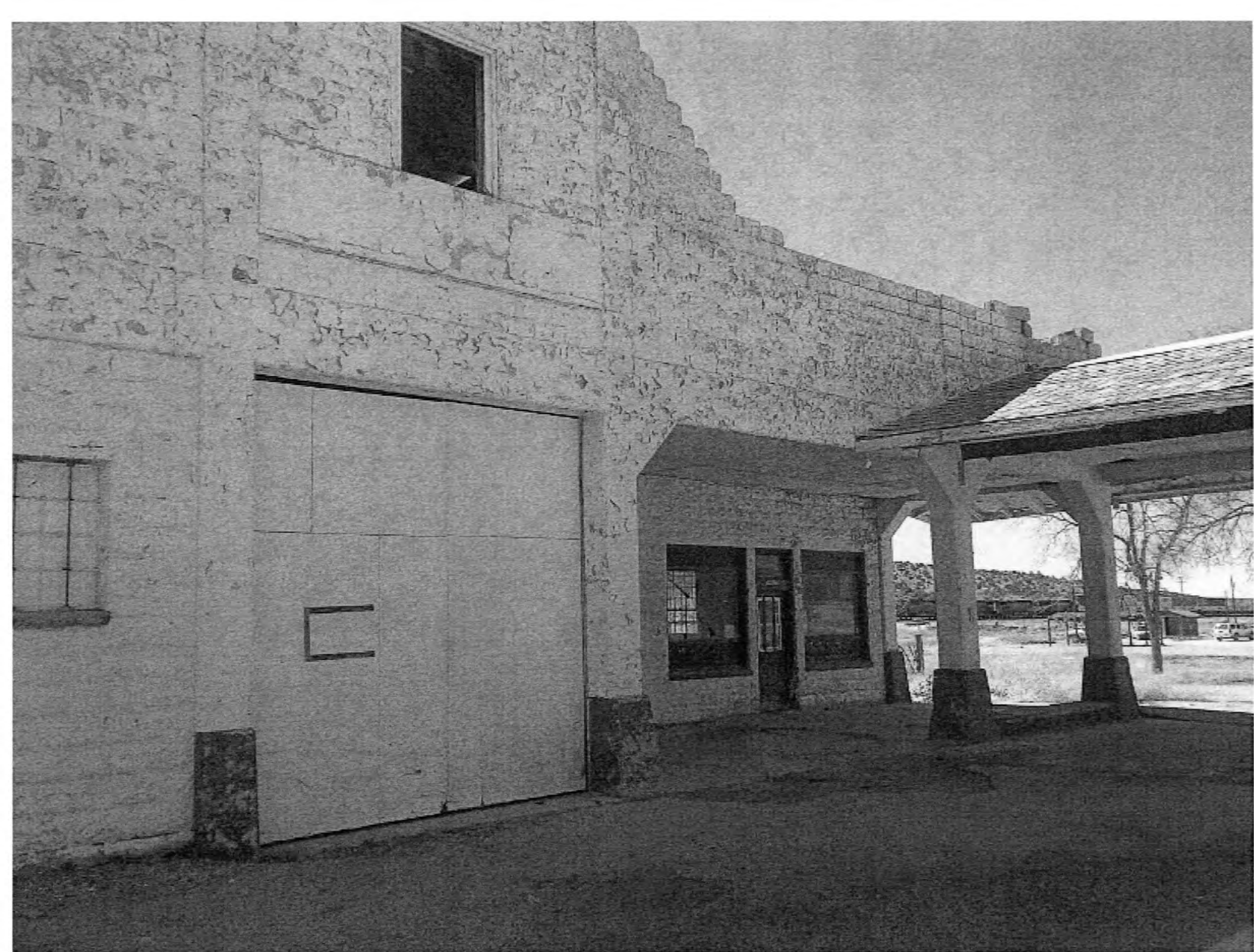
TELEPHONE _____ DATE _____

DOCUMENTATION see attached comments Y/N see attached SLR Y/N



03.15.2012







HUALAPAI TRIBE
DEPARTMENT OF CULTURAL RESOURCES
PO Box 310 – 878 W. Route 66
Peach Springs – Arizona 86434
PH # 928.769.2223/2234 FX# 928.769.2235



May 20, 2009

Linda McClelland, Historian
United States Department of the Interior
National Park Service
National Register of Historic Places
1201 Eye Street, N.W. 8th Floor
Washington D.C. 20005

RE: *John Osterman Gas Station, Peach Springs, Mohave County, Arizona*

Dear Ms. McClelland:

Please find enclosed a nomination for the John Osterman Gas Station.

The Hualapai Nation Tribal Council voted 8 in favor, 1 excused, on May 19, 2009 at a Special Council meeting to nominate the former gas station and forward it to the Keeper for consideration for listing in the National Register of Historic Places. The gas station is nominated under the "Historic Route 66 in Arizona" Multiple Property Documentation Form, as amended in 1996.

Thank you for your assistance, and please call me if you have any questions or need more information.

Sincerely,

A handwritten signature in cursive script that reads "Loretta Jackson-Kelly".

Ms. Loretta Jackson – Kelly,
Tribal Historic Preservation Officer, Hualapai Nation

Enclosure: one National Register nomination



"Loretta Jackson-Kelly"
<lorjac@frontiernet.net>

03/14/2012 04:54 PM

To <Linda_McClelland@nps.gov>

cc

bcc

Subject RE: Peach Springs nominations

History:

✉ This message has been replied to.

Can you call me ? Loretta Jackson-Kelly, 928-769-2223. Thank you.

-----Original Message-----

From: Linda_McClelland@nps.gov [mailto:Linda_McClelland@nps.gov]

Sent: Tuesday, July 21, 2009 2:27 PM

To: LORJAC@frontiernet.net

Subject: Peach Springs nominations

Hi Loretta--

As we talked by telephone I will hold the 1) Osterman Gas Station nomination and 2) Additional Documentation for the Peach Springs Trading Post and Gas Station, so that you can send the missing photographs, map, and cd's.

Here's the break down of what is needed for each:

Osterman Gas Station:

- o Photographs 1-8
- o CD with TIFF digital images at least 1600 x 1200 pixels (CD required if photographs are digital images printed on digital paper)
- o USGS Quadrant map with UTM coordinates marked
- o Replacement pages for nomination with new information

Peach Springs Trading Post (additional documentation/increase significance)

- o Photographs 1-6
- o CD with TIFF images (if photographs are digital images--see above)

Please send this material Fed Ex or via some other package service to my attention:

Linda McClelland
National Register of Historic Places (8th floor)
2001 Eye St, NW.
Washington, DC 20005

If you have any questions, you can call me at 202-354-2258 or e:mail:
linda_mcclelland@nps.gov



HUALAPAI NATION

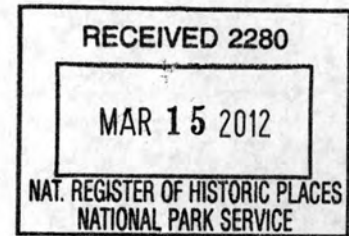
Department of Cultural Resources

P.O. Box 310

Peach Springs, AZ 86434

(928) 769-2223/2234 fax: 769-2235

March 14, 2012



To: Linda McClelland
National Register of Historic Places
National Park Service, Washington DC

Fr: Loretta Jackson-Kelly, Tribal Historic Preservation Officer
Hualapai Tribe Department of Cultural Resources

RE: National Register Nomination of the John Osterman Gas Station located in Peach Springs, AZ.

Please consider this a request to resubmit the nomination for the 1929 John Osterman Gas Station, which is a one story concrete building with poured concrete foundation, a corrugated gable roof, and a rock-faced concrete block interior. The station is located in the community of Peach Springs. The former service station retains a high degree of integrity as to its original location, design, materials, and feeling and association.

Thank you very much.

Linda McClelland/WASO/NPS
03/15/2012 04:37 PM

To "Loretta Jackson-Kelly" <lorjac@frontiernet.net>
cc
bcc
Subject RE: Emailing: Historic Osterman Gas Station March 15, 2012
021

Loretta--

I am happy to announce that the John Osterman Gas Station, Mohave County, AZ, was listed on the National Register of Historic Places on March 15, 2012.

Linda McClelland
Historian

Linda McClelland
Historian
National Register of Historic Places
202-354-2258
202-371-6447 (FAX)
linda_mcclelland@nps.gov